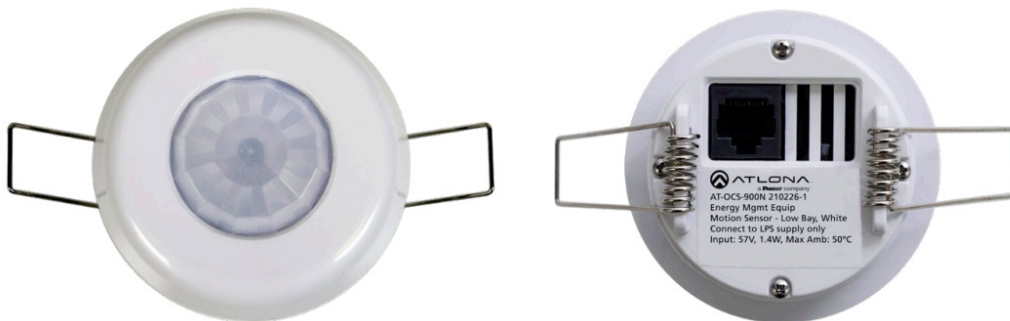


ATLONA AT-OCS-900N Network Enabled Occupancy Sensor Installation Guide

[Home](#) » [ATLONA](#) » ATLONA AT-OCS-900N Network Enabled Occupancy Sensor Installation Guide 

ATLONA AT-OCS-900N Network Enabled Occupancy Sensor Installation Guide



Contents

- [1 Package Contents](#)
- [2 Installation](#)
- [3 Coverage Pattern](#)
- [4 Accessing the Web Server](#)
- [5 Warranty](#)
- [6 Documents / Resources](#)
 - [6.1 References](#)
- [7 Related Posts](#)

Package Contents

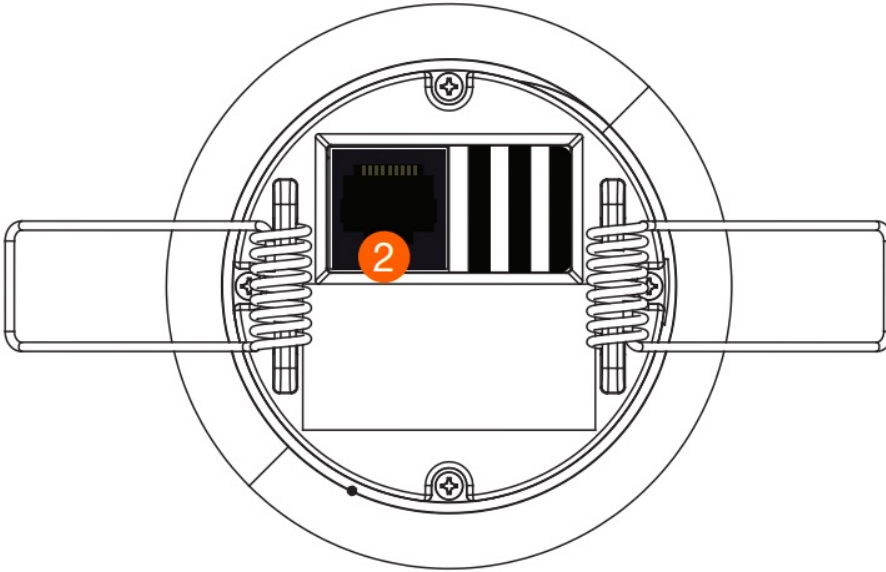
- 1 x AT-OCS-900N with installed Standard Ceiling lens
- 1 x 120-degree optics shader
- 1 x High Ceiling lens
- 1 x Installation guide



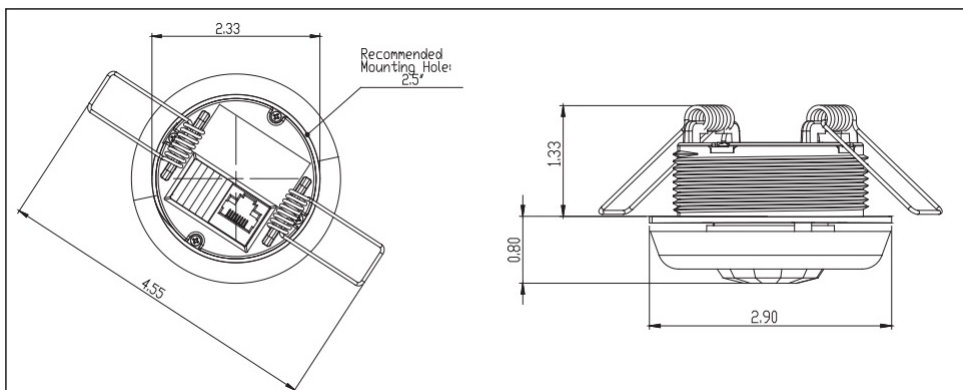
IMPORTANT: Visit <http://www.atlona.com/product/AT-OCS-900N> for the latest firmware updates and documentation.

Installation

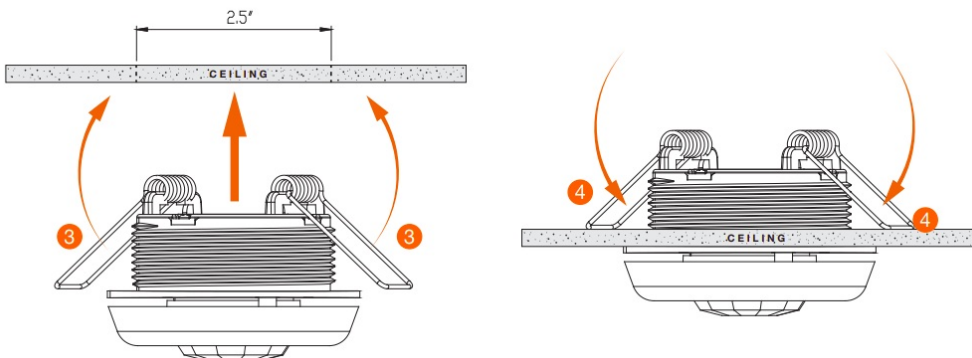
1. Determine the coverage area required. Refer to Coverage Pattern (page 3) for more information.
2. Connect an Ethernet cable from the LAN port to the Local Area Network.



3. In a pre-drilled 2.5" hole, fold the wing clips towards the center of the AT-OCS-900N. The recommended mounting hole diameter is 2.5" and should not exceed a diameter of 2.90". Refer to **Figure 1.1** for dimensions of the AT-OCS-900N.



4. Insert the device into the ceiling tile and release clips. The wing clips will return to the down position, securing the unit in place.



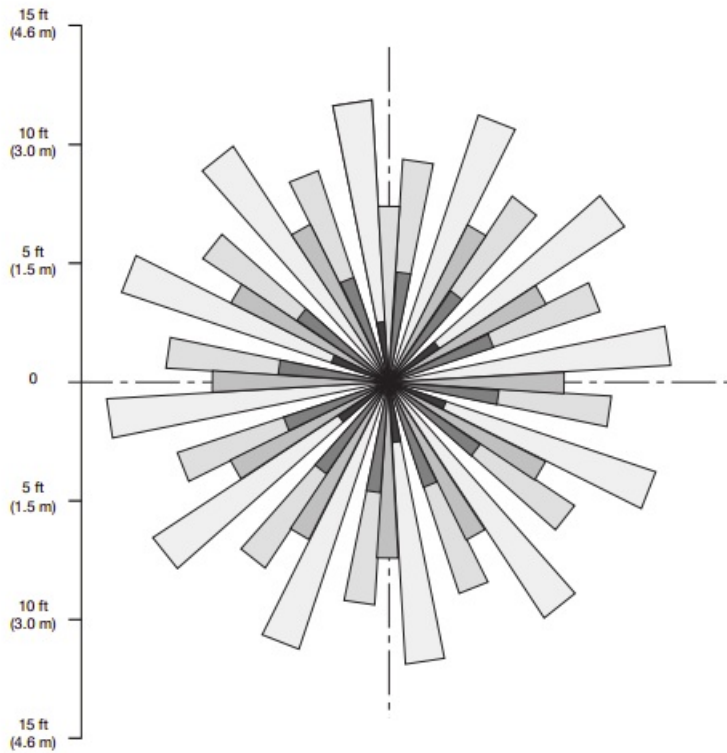
IMPORTANT: Do not touch or apply pressure to the IR sensor. Doing so may damage or break the IR sensor.

Coverage Pattern

The AT-OCS-900N includes a factory-installed Standard Ceiling lens. The Standard Ceiling lens can be replaced with the included High Ceiling lens, depending on the size of the room. Refer to the diagrams below for coverage area and the User Manual for lens removal instructions.

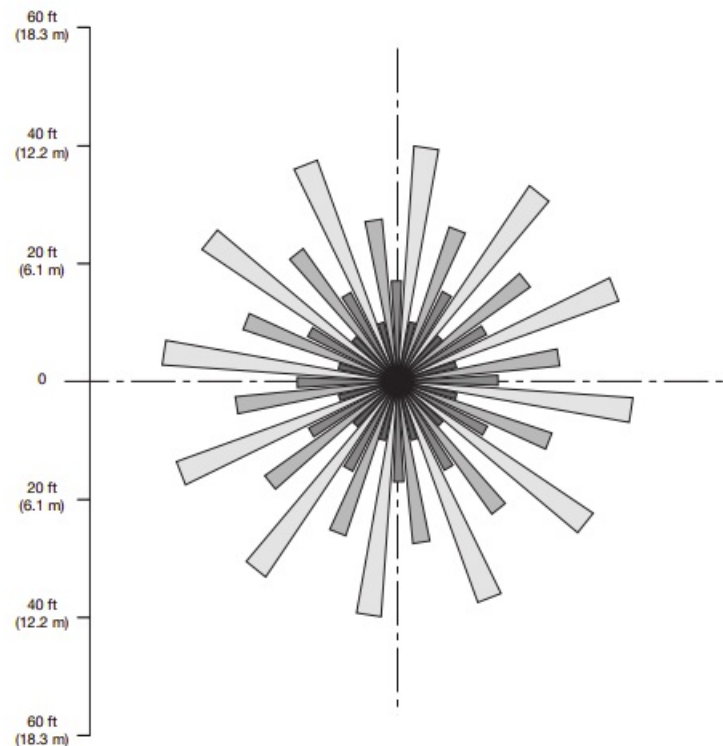
Standard Ceiling Coverage

Top View

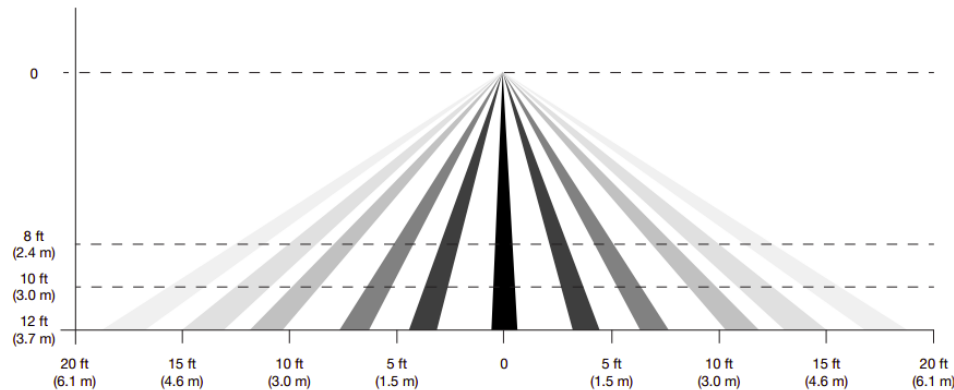


High Ceiling Coverage

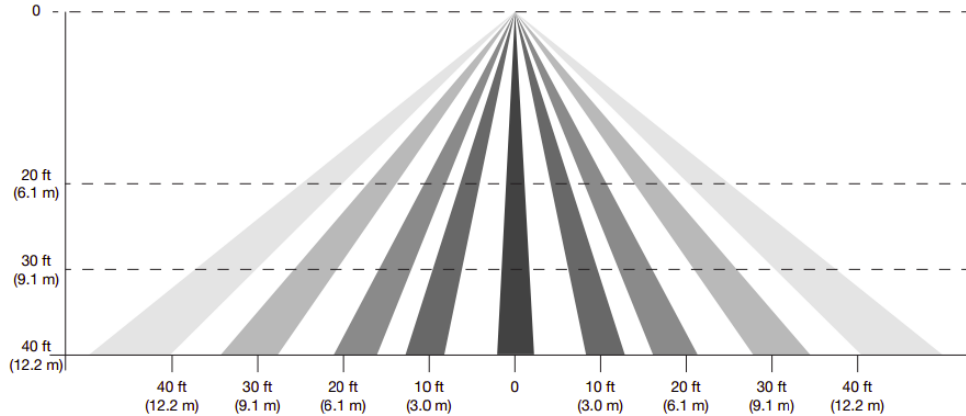
Top View



Side View



Side View



Accessing the Web Server

The AT-OCS-900N includes a built-in web server, which allows easy management and control of all features.

1. Verify that the AT-OCS-900N, and the computer used to manage the AT-OCS-900N, are connected to the same network.
2. Launch a web browser and enter the IP address of the unit.
3. The Registration page will be displayed.
4. Enter the username, password, and confirm the password on the registration page to register the device. Both the username and password must consist of 5 – 16 alphanumeric characters/symbols.
5. Click on Register button.
6. After clicking the register button, the dashboard of the built-in web server will be displayed.

Warranty

To view the product warranty, use the following link or QR code: <https://atlona.com/warranty/>.



English Declaration of Conformity

The English version can be found under the resources tab at: <https://atlona.com/product/at-ocs-900n/>.



Chinese Declaration of Conformity

To view the product warranty, use the following link or QR code <https://atlona.com/about-us/china-rohs/>.




Toll free US International
atlona.com • 877.536.3976 • 41.43.508.4321

© 2021 Atlona Inc. All rights reserved. “Atlona” and the Atlona logo are registered trademarks of Atlona Inc. All other brand names and trademarks or registered trademarks are the property of their respective owners. Pricing, specifications and availability subject to change without notice. Actual products, product images, and online product images may vary from images shown here.



Documents / Resources

	ATLONA AT-OCS-900N Network Enabled Occupancy Sensor [pdf] Installation Guide AT-OCS-900N Network Enabled Occupancy Sensor, AT-OCS-900N, Network Enabled Occupancy Sensor, Enabled Occupancy Sensor, Occupancy Sensor
---	---

References

- [Atlona® AV Solutions - Commercial & Residential](#)
- [OCS-900N: Network-Enabled Occupancy Sensor](#)
- [China RoHS - Atlona® AV Solutions - Commercial & Residential](#)
- [OCS-900N: Network-Enabled Occupancy Sensor](#)
- [Warranty - Atlona® AV Solutions - Commercial & Residential](#)