

Contents [[hide](#)]

- [1 ATEQ 52205 Wireless Module](#)
- [2 Product Information](#)
- [3 1, ESP32+2.4G+WIFI 5G board and antenna assembly](#)
- [4 WiFi Test](#)
- [5 FCC Caution](#)
- [6 Frequently Asked Questions](#)
- [7 Documents / Resources](#)
 - [7.1 References](#)



ATEQ 52205 Wireless Module



Product Information

Specifications

- Model: 52205 ESP32+2.4G+WIFI 5G Piggy Board
- Model Version: A0
- SOP Version: 1.0
- ERP P/N: 52205
- Created/Updated: 24/03/2025

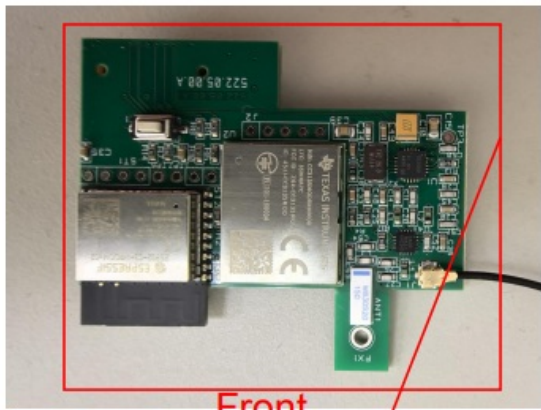
Date	Version	Evolution	Redaction	Verification
24/03/2025	1.0	First Version.	Pin Liao	

ASSEMBLY AND TEST PROCEDURE SOP

MODEL : 52205 ESP32+2.4G+WIFI 5G PIGGY BOARD MODEL VERSION : A0

1, ESP32+2.4G+WIFI 5G board and antenna assembly

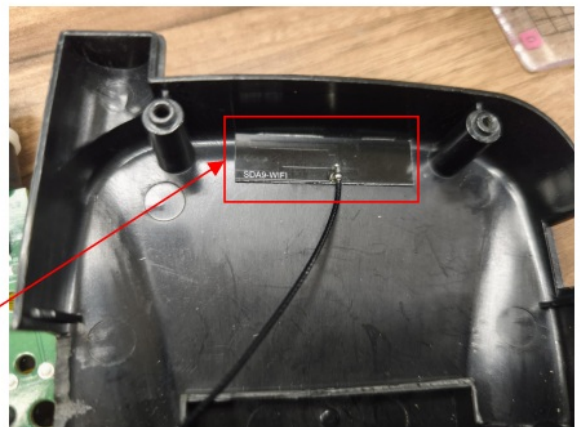
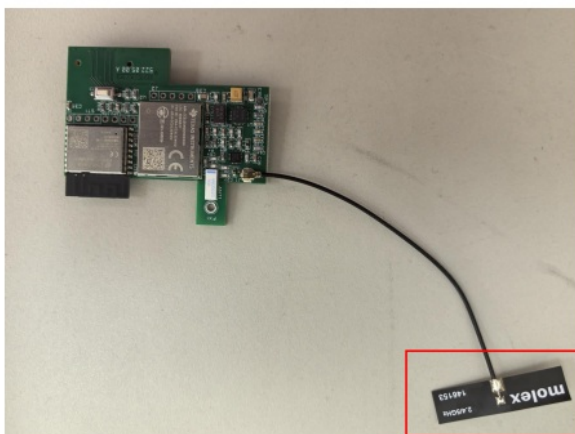
1. Insert the row needles on WiFi Piggy board(52205) into sockets on T56018 board.



Insert the row needles on WiFi Piggy board(52205) into sockets on T56018 board.



2. Remove the adhesive release paper on the back of the 2.4GHz OOK antenna and attach the antenna to the center of the front of the lower cover.



WiFi Test

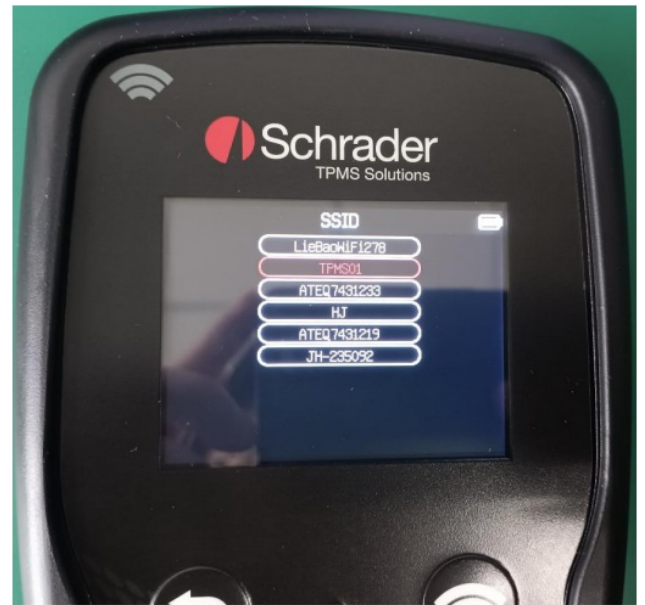
1. Select "MY TOOL"
2. Select "UPDATE"



3. Select "WiFi SETTING"
4. Select "WiFi ACTIVATED:NO"



5. Select "WiFi ACTIVATED:YES"
6. Select "SSID"



7. Input Password

8. Turn on WiF



9. Turn off WiFi



FCC Caution

This device complies with part 15 of the FCC Rules. Operation is subject to the following two conditions:

1. This device may not cause harmful interference, and
2. This device must accept any interference received, including interference that may cause undesired operation.

Any changes or modifications not expressly approved by the party responsible for compliance could void the user's authority to operate the equipment.

NOTE: This equipment has been tested and found to comply with the limits for a Class B digital device, pursuant to Part 15 of the FCC Rules. These limits are designed to provide reasonable protection against harmful interference in a residential installation. This equipment generates, uses and can radiate radio frequency energy and, if not installed and used in accordance with the instructions, may cause harmful interference to radio communications. However, there is no guarantee that interference will not occur in a particular installation.

If this equipment does cause harmful interference to radio or television reception, which can be determined by turning the equipment off and on, the user is encouraged to try to correct the interference by one or more of the following measures:

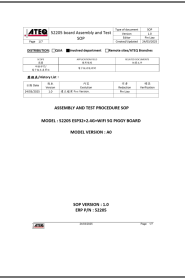
- Reorient or relocate the receiving antenna.
- Increase the separation between the equipment and receiver.
- Connect the equipment into an outlet on a circuit different from that to which the receiver is connected.
- Consult the dealer or an experienced radio/TV technician for help.

To maintain compliance with FCC’s RF Exposure guidelines, This equipment should be installed and operated with minimum distance between 20cm the radiator your body:
Use only the supplied antenna.

Frequently Asked Questions

- **Q: How do I know if the WiFi is activated?**
A: You can check the WiFi activation status by following the steps in the WiFi Testing section above.
- **Q: Can I use a different antenna with this board?**
A: It is recommended to use only the supplied antenna to maintain compliance with regulatory guidelines.

Documents / Resources



[ATEQ 52205 Wireless Module \[pdf\]](#) User Manual
2AK5Y-52205, 2AK5Y52205, 52205, 52205 Wireless Module, 52205, Wireless Module, Module

References

- [User Manual](#)

📎 2AK5Y-52205, 2AK5Y52205, 52205, 52205 Wireless Module, ATEQ, Module, Wireless

📁 ATEQ Module

Leave a comment

Your email address will not be published. Required fields are marked *

Comment *

Name

Email

Website

☐ Save my name, email, and website in this browser for the next time I comment.

Post Comment

Search:

Search

[Manuals+](#) | [Upload](#) | [Deep Search](#) | [Privacy Policy](#) | [@manuals.plus](#) | [YouTube](#)

This website is an independent publication and is neither affiliated with nor endorsed by any of the trademark owners. The "Bluetooth®" word mark and logos are registered trademarks owned by Bluetooth SIG, Inc. The "Wi-Fi®" word mark and logos are registered trademarks owned by the Wi-Fi Alliance. Any use of these marks on this website does not imply any affiliation with or endorsement.