



ATEN US3311 2Port 4K DisplayPort USB C KVM Dock Switch User Manual

[Home](#) » [Aten](#) » ATEN US3311 2Port 4K DisplayPort USB C KVM Dock Switch User Manual 

Contents

- [1 ATEN US3311 2Port 4K DisplayPort USB C KVM Dock Switch](#)
- [2 Compliance Statements](#)
- [3 User Information](#)
- [4 Product Information](#)
- [5 Package Contents](#)
- [6 About this Manual](#)
- [7 Introduction](#)
- [8 Hardware Setup](#)
- [9 The Firmware Upgrade Utility](#)
- [10 Appendix](#)
 - [10.1 Safety Instructions](#)
- [11 Technical Support](#)
- [12 Specifications](#)
- [13 ATEN Standard Warranty Policy](#)
- [14 Documents / Resources](#)
 - [14.1 References](#)
- [15 Related Posts](#)



ATEN US3311 2Port 4K DisplayPort USB C KVM Dock Switch



Compliance Statements

FEDERAL COMMUNICATIONS COMMISSION INTERFERENCE STATEMENT

This equipment has been tested and found to comply with the limits for a Class B digital service, pursuant to Part 15 of the FCC rules. These limits are designed to provide reasonable protection against harmful interference in a residential installation. Any changes or modifications made to this equipment may void the user's authority to operate this equipment. This equipment generates, uses, and can radiate radio frequency energy. If not installed and used in accordance with the instructions, may cause harmful interference to radio communications. However, there is no guarantee that interference will not occur in a particular installation. If this equipment does cause harmful interference to radio or television reception, which can be determined by turning the equipment off and on, the user is encouraged to try to correct the interference by one or more of the following measures:

- Reorient or relocate the receiving antenna.
- Increase the separation between the equipment and receiver.
- Connect the equipment into an outlet on a circuit different from that to which the receiver is connected.
- Consult the dealer or an experienced radio/TV technician for help.

The device complies with Part 15 of the FCC Rules. Operation is subject to the following two conditions: (1) this device may not cause harmful interference, and (2) this device must accept any interference received, including interference that may cause undesired operation. FCC Caution: Any changes or modifications not expressly approved by the party responsible for compliance could void the user's authority to operate this equipment.

Industry Canada Statement

This Class B digital apparatus complies with Canadian ICES-003.

RoHS

This product is RoHS compliant

User Information

Online Registration

Be sure to register your product at our online support center:

- International <http://eservice.aten.com>

Telephone Support

For telephone support, call this number:

International	886-2-8692-6959
China	86-400-810-0-810
Japan	81-3-5615-5811
Korea	82-2-467-6789
North America	1-888-999-ATEN ext 4988 1-949-428-1111

User Notice

All information, documentation, and specifications contained in this manual are subject to change without prior notification by the manufacturer. The manufacturer makes no representations or warranties, either expressed or implied, with respect to the contents hereof and specifically disclaims any warranties as to merchantability or fitness for any particular purpose. Any of the manufacturer's software described in this manual is sold or licensed as is. Should the programs prove defective following their purchase, the buyer (and not the manufacturer, its distributor, or its dealer), assumes the entire cost of all necessary servicing, repair and any incidental or consequential damages resulting from any defect in the software. The manufacturer of this system is not responsible for any radio and/or TV interference caused by unauthorized modifications to this device. It is the responsibility of the user to correct such interference. The manufacturer is not responsible for any damage incurred in the operation of this system if the correct operational voltage setting was not selected prior to operation. PLEASE VERIFY THAT THE VOLTAGE SETTING IS CORRECT BEFORE USE.

Product Information

For information about all ATEN products and how they can help you connect without limits, visit ATEN on the Web or contact an ATEN Authorized Reseller. Visit ATEN on the Web for a list of locations and telephone numbers:

- International <http://www.aten.com>
- North America <http://www.aten-usa.com>

Package Contents

Check to make sure that all the components are in working order. If you encounter any problem, please contact your dealer.

- 1 US3311 2-Port 4K DisplayPort USB-C KVM Dock Switch with Power Pass-Through
- 1 power adapter
- 2 USB-C cables
- 1 port switch button
- 1 user instructions

About this Manual

This user manual is provided to help you get the most from the US3311 unit. It covers all aspects of installation, configuration, and operation. An overview of the information found in the manual is provided below.

- **Chapter 1, Introduction** introduces you to the 2-Port 4K DisplayPort USBC KVM Dock Switch with Power Pass-Through. Its purpose, features, declaration, and panel components are presented and described.
- **Chapter 2, Hardware Setup** describes the steps that are necessary to quickly and safely set up your installation.
- **Chapter 3, The Firmware Upgrade Utility** explains how to download US3311's firmware files and upgrade the device using the utility.

Appendix provides a list of safety instructions and precautions, contact information for ATEN technical support, product specifications, and other technical information.

Note:

- Read this manual thoroughly and follow the installation and operation procedures carefully to prevent any damage to the unit or any connected devices.
- This product may be updated with features and functions added, improved or removed since the release of this manual. For an up-to-date user manual, visit <http://www.aten.com/global/en/>

Conventions

This manual uses the following conventions:

- Monospaced Indicates text that you should key in.
- [] Indicates keys you should press. For example, [Enter] means to press the Enter key. If keys need to be chorded, they appear together in the same bracket with a plus sign between them: [Ctrl+Alt].
- 1. Numbered lists represent procedures with sequential steps.
- ♦ Bullet lists provide information, but do not involve sequential steps.
- > Indicates selecting the option (on a menu or dialog box, for example), that comes next. For example, Start > Run means to open the Start menu, and then select Run. Indicates critical information.

Introduction

Overview

Built to deliver easy control and seamless switching between dual USB- hosts, the US3311 is a 2-in-1 solution combining a KVM switch and a multiport dock with 4 x USB Type-A ports, 1 x DisplayPort, 1 x USB-C PD input, and 1 x DC jack input. Quick switching from one laptop to the other is made easy through one press of the dedicated port switch button, enabling use of the same USB peripherals and a single DisplayPort monitor for two host devices. Work efficiency is boosted without the need to switch workstations or unplug peripherals. Other highlights include video resolution support for up to 4K (3840 x 2160) @ 60 Hz, ensuring that every video detail is displayed in crisp UHD quality. The US3311 is a 4-port USB 3.2 Gen 1 Type-A hub with up to 5 Gbps data transfer rates while supporting high-speed downstream devices. Furthermore, the Power Delivery 3.0 technology enables charging of the host device with up to 100 W, allowing your laptop to obtain the maximum power via your USBC power adapter. The US3311 helps save valuable desk space and expands the functionality and connectivity of your Mac laptops, creating an ultra-powerful USB-C workstation.

Features

- 2-in-1 solution for 2 USB-C host devices – combines a KVM switch and a multiport dock with 4 x USB 3.2 Gen 1 Type-A ports, 1 x DisplayPort, 1 x USB-C PD input, and 1 x DC jack input
- Superior video quality – up to True 4K (3840 X 2160 @ 60 Hz)

- ATEN Video DynaSync™ Technology – eliminates boot-up display problems and optimizes resolutions when switching among video sources
- USB 3.2 Gen 1 compliant
- Up to 5 Gbps data transfer rates
- Supports DP 1.4 Alt Mode
- Supports PD 3.0 up to 100 W USB PD charging – allows your laptop to obtain the maximum power via your USB-C power adapter
- Host device selection via the included port switch button
- Plug-and-Play – no drivers needed

Host Requirement

USB-C enabled computer or smartphone / tablet with one of the following operating systems:

- Windows® 10 (32-bit / 64-bit) with 7th-Gen Intel Core Processor or above
- Windows 10 version 2004
- Windows 11 version 21H2
- MacOS X 10.12 or later
- MacBook Pro 10.15.4
- MacBook Air 11.3.1
- Mac mini OS 11.3.1
- Mac mini OS 12.3.1
- MacBook Air 13" (A1932) 2018 macOS Monterey 12.2.1
- Mac mini (A1993) 2018 macOS Monterey 12.4
- iPadOS 13.1 or later
- iPad Pro 11 (A2377) iPadOS 15.1
- Android 8.0 or later
- Huawei Mate 20.Harmony OS 2.0.0
- Samsung Galaxy S21 Android 11
- Samsung Galaxy Tab S7+ Android 12

Note: To transmit video through a USB-C port, make sure your computer supports DP Alt Mode over the USB-C port, and that it has been enabled.

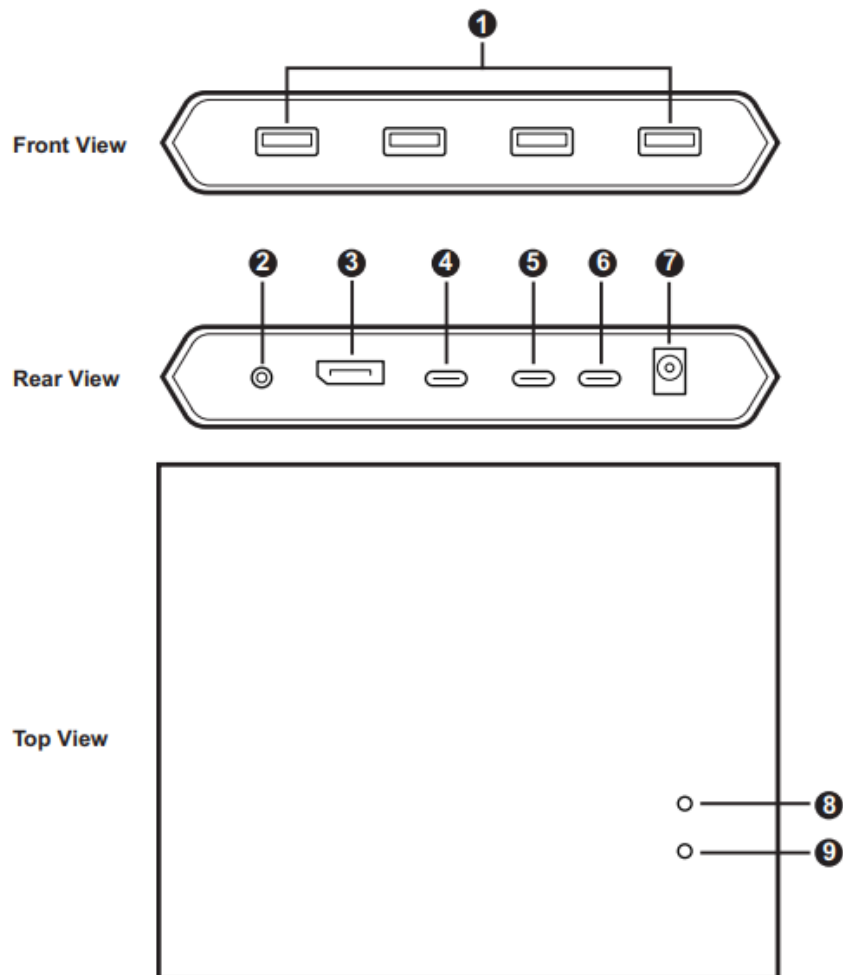
Declaration

Samsung Dex is a registered application of Samsung Electronics. US3311 is not manufactured, sponsored, licensed or distributed by Samsung Electronics. Huawei Desktop mode is a registered application of Huawei Technologies. US3311 is not manufactured, sponsored, licensed or distributed by Huawei Technologies.

Below is a list of supporting mobile device:

Samsung	Huawei	HTC	LG
Samsung Galaxy S8	Huawe P20	HTC U11	LG V20
Samsung Galaxy S8+	Huawe P20 Pro	HTC U Ultra	
Samsung Galaxy S9			
Samsung Galaxy S9+			
Samsung Galaxy S10			
Samsung Galaxy S10+			
Samsung Galaxy S10e			
Samsung Galaxy Note 8			
Samsung Galaxy Note 9			

Hardware Overview



No.	Component	Description
Front View		
1	USB Type-A ports	Connects up to 4 USB peripherals such as a USB mouse, USB keyboard, camera, USB headset, or external hard drive. Note: These ports are USB 3.2 Gen 1 compliant.
Rear View		
2	jack for port switch button	The port switch button plugs in here. Click the button to switch the KVM control between the two computers.

No.	Component	Description
3	D splay output port	Connects to a D splayPort-enabled mon tor for v deo d splay.
4	USB-C port (source 2)	<p>Connects to a USB-C source dev ce here.</p> <p>Note: Th s USB-C port supports dev ce char ng such as an Pad for up to 5V, 3A, 15W. Please check the power spec f cat on of the dev ce before charg ng.</p>
5	USB-C port (source 1)	Connects to a USB-C source dev ce here.
6	USB-C port (power)	<p>Connects to a laptop power adapter for laptop PD charg ng on the source dev ce connected to the USB-C port (source 1).</p> <p>Note:</p> <p>w Th s USB-C port (power) supports USB-C PD laptop charg ng at 5V, 9V, 15 V, and 20V output, and the USB-C power adapter s not suppl ed n the package.</p> <p>w For dev ce charg ng, a L m ted Power Source (LPS) cert f ed USB-C PD Po wer Adapter over 65 watts s recommended. The system power requ rement for bas c USB funct ons and v deo output should be at least 5V, 3A.</p>
7	power jack	Connects to the power adapter here.

Top View

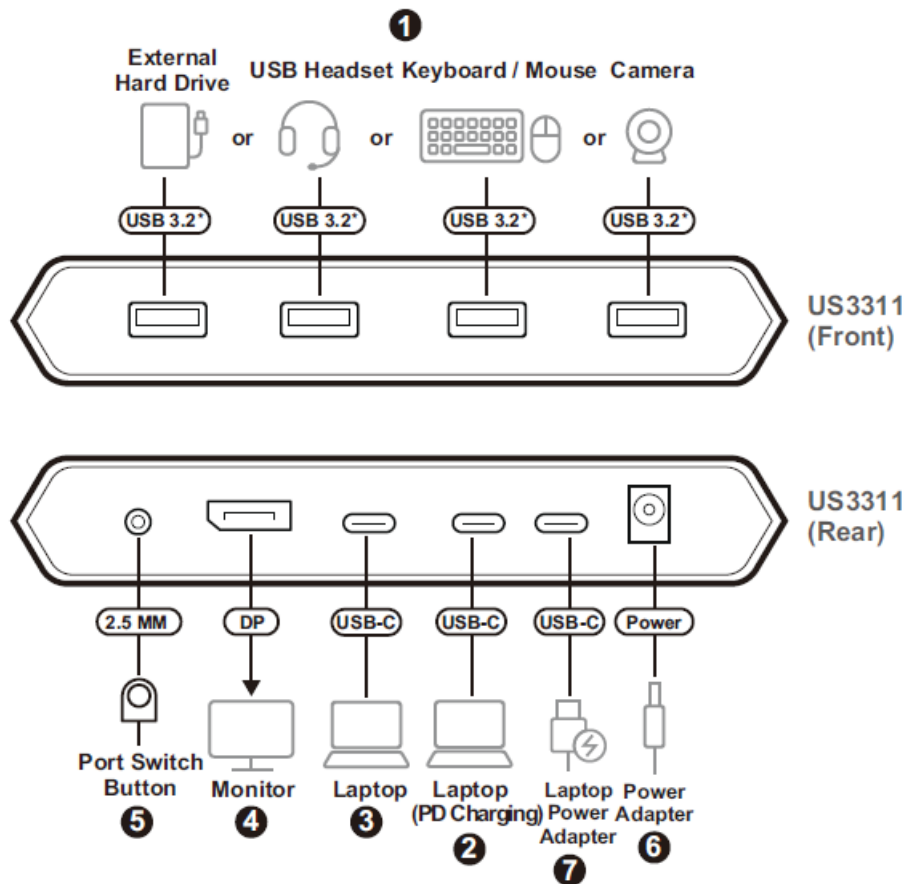
8	port 1 status LED	The LEDs correspond to the consoles. When the console s sw tched, the corre spond ng LED w ll l ght.
9	port 2 status LED	

Hardware Setup

1. Please review the safety information regarding the placement of this device in Safety Instructions, page 15.
2. To prevent damage to your installation from power surges or static electricity. It is important that all connected devices are properly grounded.

Connecting the Unit

Follow the steps below to connect the US3311 unit.



*The indicated ports are USB 3.2 Gen 1 compliant.

1. Connect up to 4 USB peripherals such as a USB mouse, USB keyboard, printer, or external hard drive to the unit's USB Type-A ports.
2. Connect a USB-C source device to the unit's USB-C port (source 1).
3. Connect another USB-C source device to the unit's USB-C port (source 2).
4. Connect a DisplayPort-enabled display to the unit's DisplayPort output port.
5. Connect the supplied port switch button to the indicated jack.
6. Connect the power adapter to the unit's power jack.
7. (Optional) You can connect your source device to the USB-C port (power) for PD laptop charging.

Note: For device charging, a Limited Power Source (LPS) certified USBC PD Power Adapter over 65 watts is recommended. The system power requirement for basic USB functions and video output should be at least 5V, 3A.

Operation

- Press the port switch button to switch KVM control between the two USBC source devices. The port LED for the selected port lights white.
- Press and hold the port switch button for 3 seconds if you encounter any monitor compatibility issues.

The Firmware Upgrade Utility

Overview

As new firmware versions become available, new firmware upgrade packages are posted on our website. Check the website regularly to find the latest information and packages.

Downloading the Firmware Upgrade Package

To download the firmware upgrade package:

1. On our Website, go to Support Center – Download and choose the device model, or from the US3311 product page, click on the Support and Downloads tab, and go to Software & Drivers. A list of available firmware upgrade packages appears.
2. Choose the firmware upgrade package that you wish to install (usually the most recent) and download it to your computer.

Preparation

To prepare for the firmware upgrade, do the following:

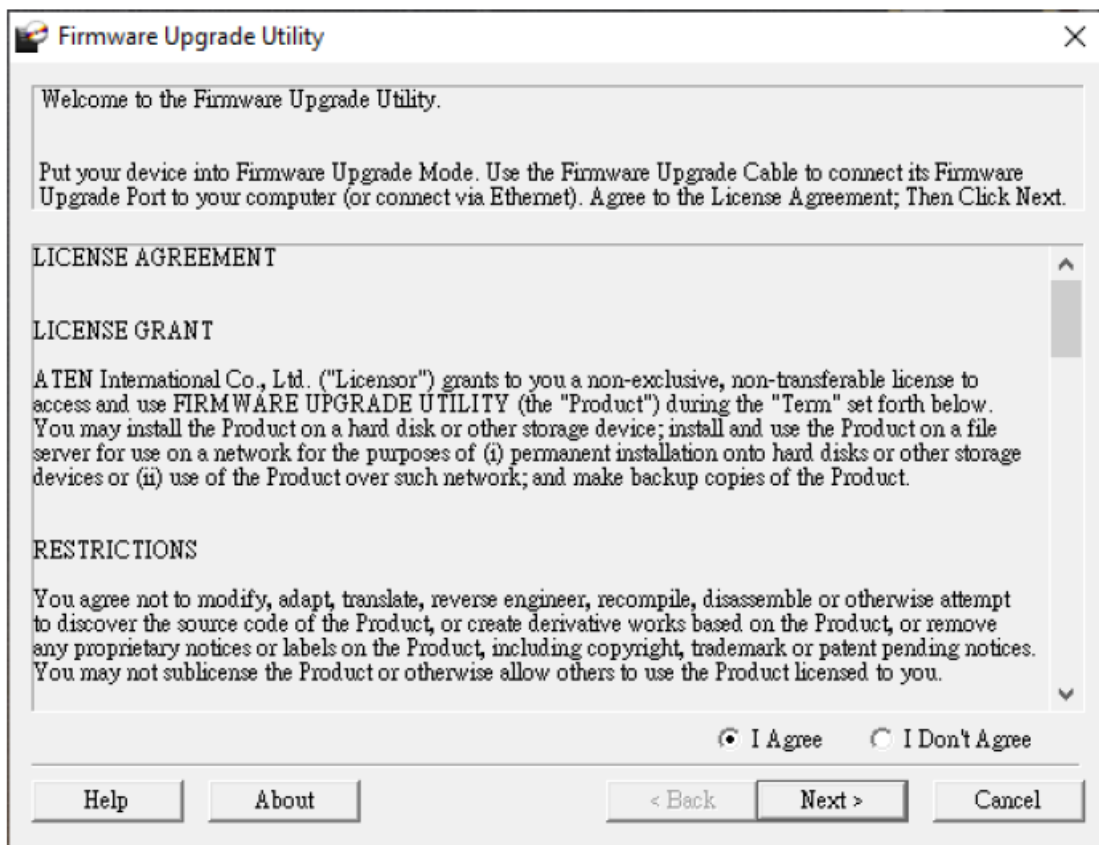
1. Power off the US3311
2. Connect the USB-C port (source 1) to the computer (which the firmware upgrade package was downloaded to) using the supplied USB-C cable.
3. Press and hold the port switch button and make sure the port switch button is connected to the US3311.
4. Plug the power adapter cable into the power jack to power on the US3311.

The port 1 status and port 2 status LEDs blink together once every 0.5 seconds to indicate Firmware Upgrade Mode is in effect.

Starting the Upgrade

To upgrade the US3311, follow the steps below:

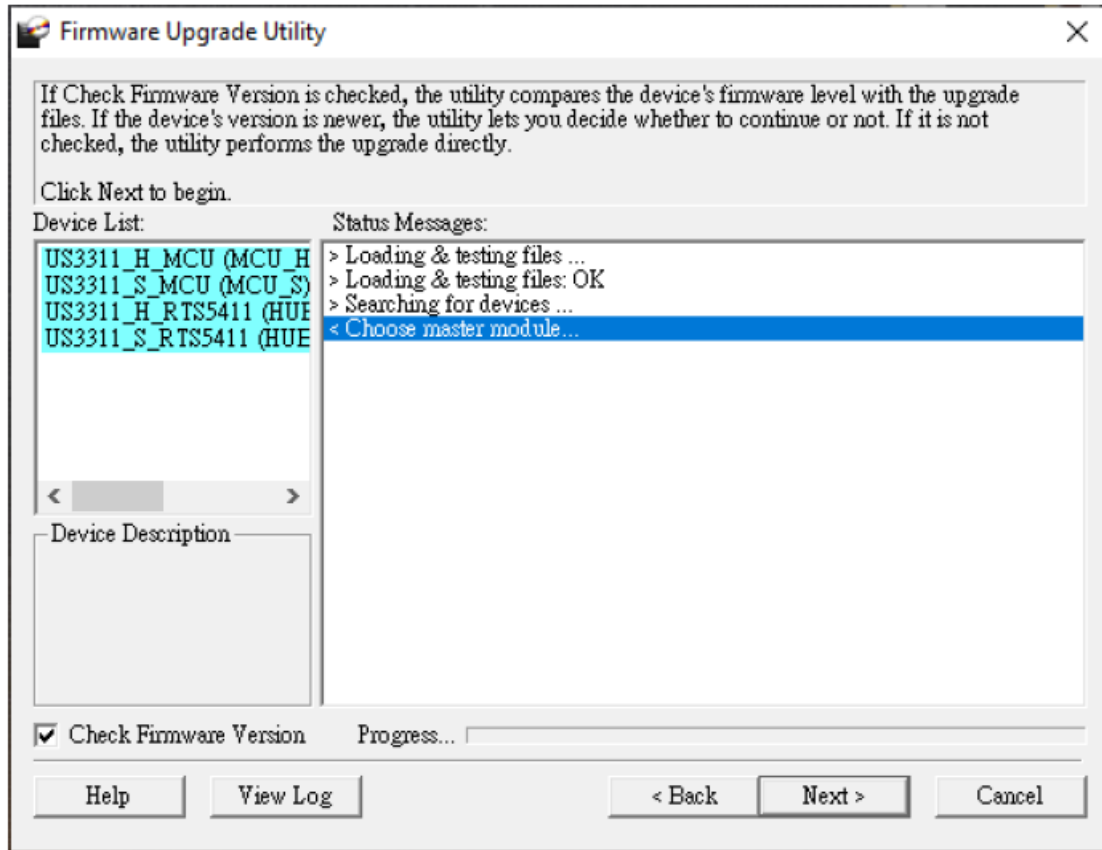
1. Run the downloaded Firmware Upgrade Package file – either by double clicking the file icon, or by opening a command line and entering the full path to it. The Firmware Upgrade Utility Welcome screen appears:



Note: The screens shown in this section are for reference only. The wording and layout of the actual screens

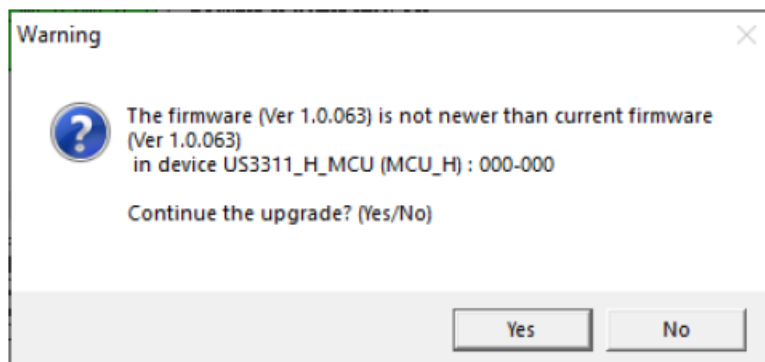
put up by the Firmware Upgrade Utility may vary slightly from these examples.

2. Read the License Agreement (enable the I Agree radio button).
3. Click Next to continue. The Firmware Upgrade Utility main screen appears:



The Utility inspects your installation. All the devices capable of being upgraded by the package are listed in the Device List panel.

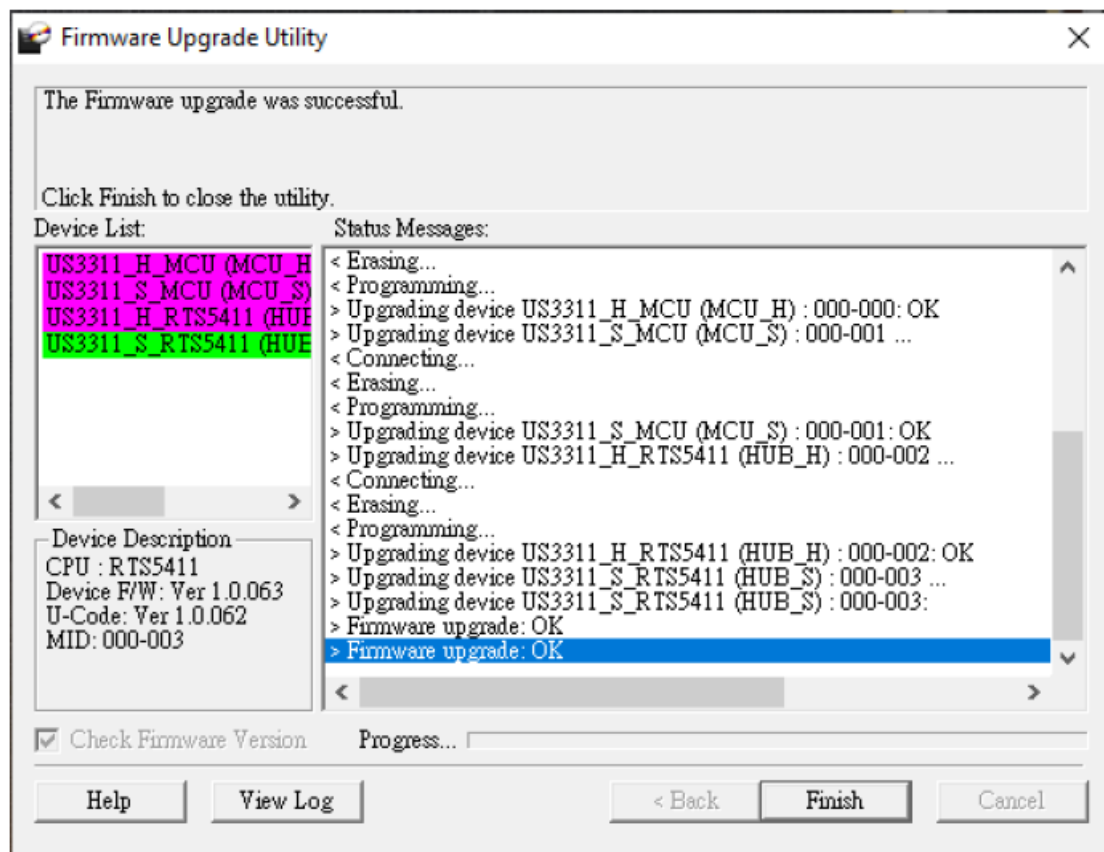
4. Click Next to perform the upgrade.



If you enabled Check Firmware Version, the Utility compares the device's firmware level with that of the upgrade files. If it finds that the device's version is higher than the upgrade version, it brings up a dialog box informing you of the situation and gives you the option to Continue or Cancel. If you didn't enable Check Firmware Version, the Utility installs the upgrade files without checking whether they are a higher level, or not. As the Upgrade proceeds, status messages appear in the Status Messages panel, and the progress toward completion is shown on the Progress bar.

Upgrade Succeeded

After the upgrade has completed, a screen appears to inform you that the procedure was successful:



Click Finish to close the Firmware Upgrade Utility. After a successful completion, the US3311 exit Firmware Upgrade Mode, and resets itself.

Upgrade Failed

If the Upgrade Succeeded screen doesn't appear, it means that the upgrade failed to complete successfully, in which case you should do the following:

1. Power off the US3311 by removing the power jack.
2. Invoke Firmware Upgrade Mode by holding down the port switch button (see jack for port switch button, page 5), and power on the US3311. The front LEDs flash together.
3. Do the firmware upgrade procedure again.

Appendix

Safety Instructions

General

- This product is for indoor use only.
- Read all of these instructions. Save them for future reference.
- Follow all warnings and instructions marked on the device.
- Do not place the device on any unstable surface (cart, stand, table, etc.). If the device falls, serious damage will result.
- Do not use the device near water.
- Do not place the device near, or over, radiators or heat registers.
- The device cabinet is provided with slots and openings to allow for adequate ventilation. To ensure reliable

operation, and to protect against overheating, these openings must never be blocked or covered.

- The device should never be placed on a soft surface (bed, sofa, rug, etc.) as this will block its ventilation openings. Likewise, the device should not be placed in a built in enclosure unless adequate ventilation has been provided.
- Never spill liquid of any kind on the device.
- Unplug the device from the wall outlet before cleaning. Do not use liquid or aerosol cleaners. Use a damp cloth for cleaning.
- The device should be operated from the type of power source indicated on the marking label. If you are not sure of the type of power available, consult your dealer or local power company.
- To prevent damage to your installation it is important that all devices are properly grounded.
- Do not allow anything to rest on the power cord or cables. Route the power cord and cables so that they cannot be stepped on or tripped over.
- Position system cables and power cables carefully; Be sure that nothing rests on any cables.
- Never push objects of any kind into or through cabinet slots. They may touch dangerous voltage points or short out parts resulting in a risk of fire or electrical shock.
- Do not attempt to service the device yourself. Refer all servicing to qualified service personnel.
- If the following conditions occur, unplug the device from the wall outlet and bring it to qualified service personnel for repair.
 - The power cord or plug has become damaged or frayed.
 - Liquid has been spilled into the device.
 - The device has been exposed to rain or water.
 - The device has been dropped, or the cabinet has been damaged.
 - The device exhibits a distinct change in performance, indicating a need for service.
 - The device does not operate normally when the operating instructions are followed.
- Only adjust those controls that are covered in the operating instructions. Improper adjustment of other controls may result in damage that will require extensive work by a qualified technician to repair.
- Avoid circuit overloads. Before connecting equipment to a circuit, know the power supply's limit and never exceed it. Always review the electrical specifications of a circuit to ensure that you are not creating a dangerous condition or that one doesn't already exist. Circuit overloads can cause a fire and destroy equipment.

Technical Support

International

- For online technical support – including troubleshooting, documentation, and software updates:
<http://support.aten.com>
- For telephone support, see Telephone Support, page iv:

North America

Email Support		support@aten-usa.com
Online Technical Support	Troubleshooting Documentation Software Updates	http://www.aten-usa.com/support
Telephone Support		1-888-999-ATEN ext 4988 1-949-428-1111

When you contact us, please have the following information ready beforehand:

- Product model number, serial number, and date of purchase
- Your computer configuration, including operating system, revision level, expansion cards, and software
- Any error messages displayed at the time the error occurred
- The sequence of operations that led up to the error
- Any other information you feel may be of help

Specifications

Function		US3311
Computer Connections		2
Connectors	Computer	CPU 1: 1 x USB-C Female CPU 2: 1 x USB-C Female
	Dev ce	4 x USB 3.2 Gen 1 Type-A Female
	V deo Output	1 x D splayPort Female
	Power	1 x DC Jack for 12V, 3.3A 1 x USB-C Female ¹ Port 1: Supports USB-C PD laptop charg ng at 5V, 9V, 15V, and 20V output ² Port 2: Supports max. 5V, 3A out put Note: 1. Supports max mum 100W USB-C PD power adapter nput. 2. For dev ce charg ng, a L m ted Power Source (LPS) cert f ed s ngle port USB-C PD Power Adapter over 65 Watt s recom mended. The m n mum system power requ rement for bas c U SB funct ons and v deo output should be at least 5V, 3A.
Port Selection	Input	Port Sw tch Button
Video Resolution		Up to 3840 x 2106 @ 60 Hz

Function	US3311
----------	--------

System Requirements		<p>w Windows 10 and above, USB-C enabled computer w th DP Alt Mode</p> <p>Note: W th Intel 7th-Generat on Core Processor (Kaby-Lake) a nd above. More nfo about CPU generat on, please f nd: http://www.intel.com/content/www/us/en/processors/processor-numbers.html</p> <p>w MacOS X 10.12 and above, USB-C enabled computer</p> <p>w Andro d 8.0 and later, USB-C enabled Smartphone w th DP Alt mode</p> <p>Note: Only Samsung and Huawei support PC- l ke operat on, ot hers only support m rror mode. For a l st of support ng mob le dev ce, see <i>Declaration</i>, page 4.</p> <p>w PadOS 13.1 and above, Pad Pro (USB-C)</p> <p>Note: Pad Pro supports v deo output n m rror mode.</p>
Power	Max mum Input Powe r Rat ng	DC12V, 3.3A
Power Consumption		DC12V:1.68W:117BTU
LED	Selected	2 x Wh te
Environmental	Operat ng Temp	0 – 40°C
	Storage Temp	-20 – 60°C
	Hum d ty	0 – 80% RH, Non-condens ng
Physical Properties	Hous ng	Alum num
	We ght	0.35 kg (0.77 lb)
	D mens ons (L x W x H)	14.30 x 11.90 x 2.38 cm (5.63 x 4.69 x 0.94 n)

ATEN Standard Warranty Policy

Limited Hardware Warranty

ATEN warrants its hardware in the country of purchase against flaws in materials and workmanship for a Warranty Period of two [2] years (warranty period may vary in certain regions/countries) commencing on the date of original purchase. This warranty period includes the LCD panel of ATEN LCD KVM switches. Select products are warranted for an additional year (see A+ Warranty for further details). Cables and accessories are not covered by

the Standard Warranty.

What is covered by the Limited Hardware Warranty








ATEN will provide a repair service, without charge, during the Warranty Period. If a product is defective, ATEN will, at its discretion, have the option to (1) repair said product with new or repaired components, or (2) replace the entire product with an identical product or with a similar product which fulfills the same function as the defective product. Replaced products assume the warranty of the original product for the remaining period or a period of 90 days, whichever is longer. When the products or components are replaced, the replacing articles shall become customer property and the replaced articles shall become the property of ATEN. To learn more about our warranty policies, please visit our website: <http://www.aten.com/global/en/legal/policies/warranty-policy/>

Copyright 2023 ATEN® International Co., Ltd. Released: 2023-02-18 ATEN and the ATEN logo are registered trademarks of ATEN International Co., Ltd. All rights reserved. All other brand names and trademarks are the registered property of their respective owners.

Documents / Resources

	ATEN US3311 2Port 4K DisplayPort USB C KVM Dock Switch [pdf] User Manual US3311, US3311 2Port 4K DisplayPort USB C KVM Dock Switch, 2Port 4K DisplayPort USB C KVM Dock Switch, 4K DisplayPort USB C KVM Dock Switch, USB C KVM Dock Switch, KVM Dock Switch, Dock Switch
---	--

References

-  [eService System](#)
-  [USA Location information - USA.com](#)
-  [ATEN - Simply Better Connections | ATEN U.S.A.](#)
-  [ATEN - Simply Better Connections | ATEN Corporate Headquarters](#)
-  [ATEN Product Warranty | ATEN Corporate Headquarters](#)
-  [A+ Warranty | ATEN Corporate Headquarters](#)
-  [LCD KVM Switches / Consoles | ATEN Corporate Headquarters](#)