



**KL1108V Cat 5  
Dual Rail LCD  
KVM over IP  
Switch**



# ATEN KL1108V Cat 5 Dual Rail LCD KVM over IP Switch Instructions

[Home](#) » [Aten](#) » ATEN KL1108V Cat 5 Dual Rail LCD KVM over IP Switch Instructions 

## Contents

- [1 ATEN KL1108V Cat 5 Dual Rail LCD KVM over IP Switch](#)
- [2 Package Contents](#)
- [3 A Hardware Overview](#)
- [4 Connecting the Device](#)
- [5 Documents / Resources](#)
  - [5.1 References](#)



**ATEN KL1108V Cat 5 Dual Rail LCD KVM over IP Switch**



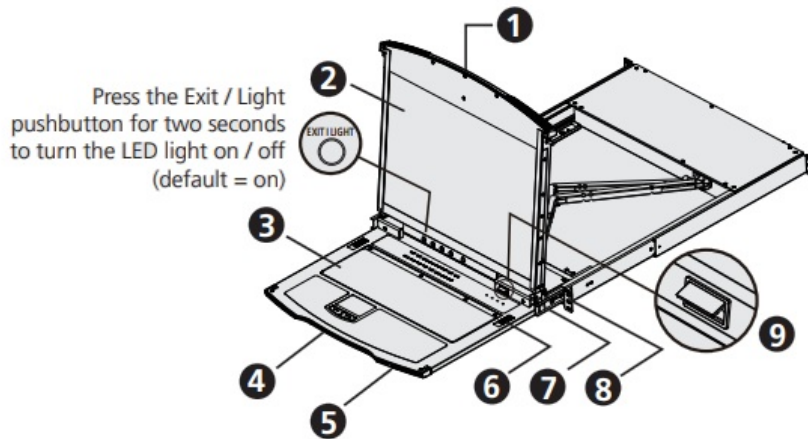
## **Package Contents**

- 1 KL1108V / KL1116V Cat 5 Dual
- Rail LCD KVM over IP Switch with a Standard Mounting Kit
- 1 power cord
- 1 extension kit
- 1 user instructions

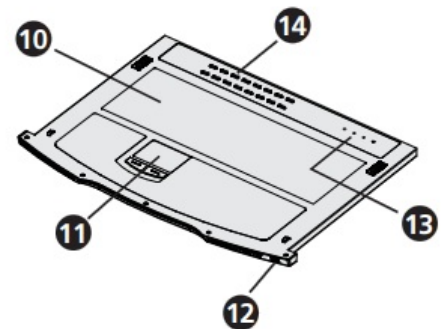
## **KL1108V / KL1116V Cat 5 Dual Rail LCD KVM over IP Switch**

## **A Hardware Overview**

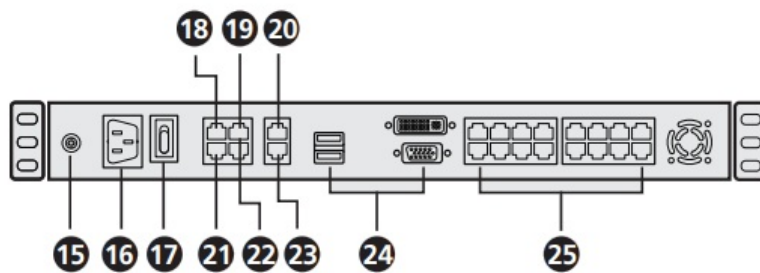
## Front View



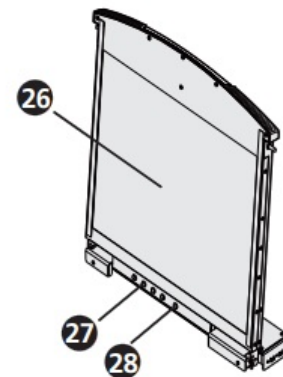
## Keyboard Module



## Rear View



## LCD Module

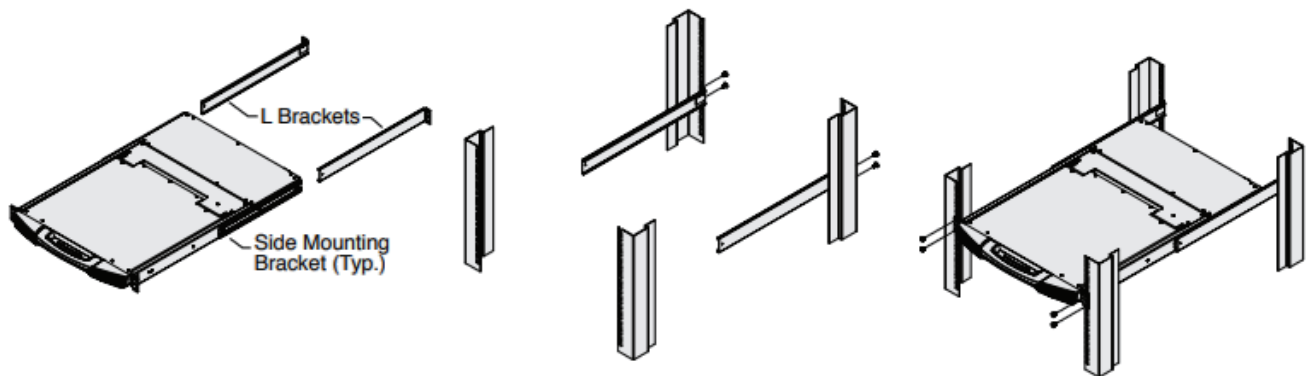


1. upper handle
2. LCD module
3. keyboard module
4. lower handle
5. power LED
6. keyboard release catch
7. LCD release catch
8. rack mount tabs
9. LED illumination light
10. keyboard
11. touchpad
12. external mouse port
13. lock LEDs & reset button
14. port selection pushbuttons and LEDs
15. grounding terminal
16. power socket
17. power switch

- 18. PON port
- 19. serial 2 port (secondary)
- 20. LAN 2 port (secondary)
- 21. modem port
- 22. serial 1 port (primary)
- 23. LAN 1 port (primary)
- 24. local console ports
- 25. KVM ports
- 26. LCD
- 27. LCD controls
- 28. LCD on/off button

## B Installation

### Standard Rack Mount



### Standard Rack Mount

1. While one person positions the switch in the rack and holds it in place, a second person loosely screws the front brackets to the rack.
2. While the first person still holds the switch in place, the second person slides the L brackets into the switch's side mounting brackets, from the rear until the bracket flanges contact with the track then screws the L brackets to the rack.
3. After the L brackets have been secured, tighten the front bracket screws.

### Note

1. Cage nuts are provided for racks that are not pre-threaded.
2. Allow at least 5.1 cm of clearance on each side for proper ventilation, and at least 12.7 cm at the back for the power cord and cables.
3. Download the user manual from our website for detailed instructions for other rack mount options at [www.aten.com](http://www.aten.com) (the 2 L brackets included in the package contents are used).

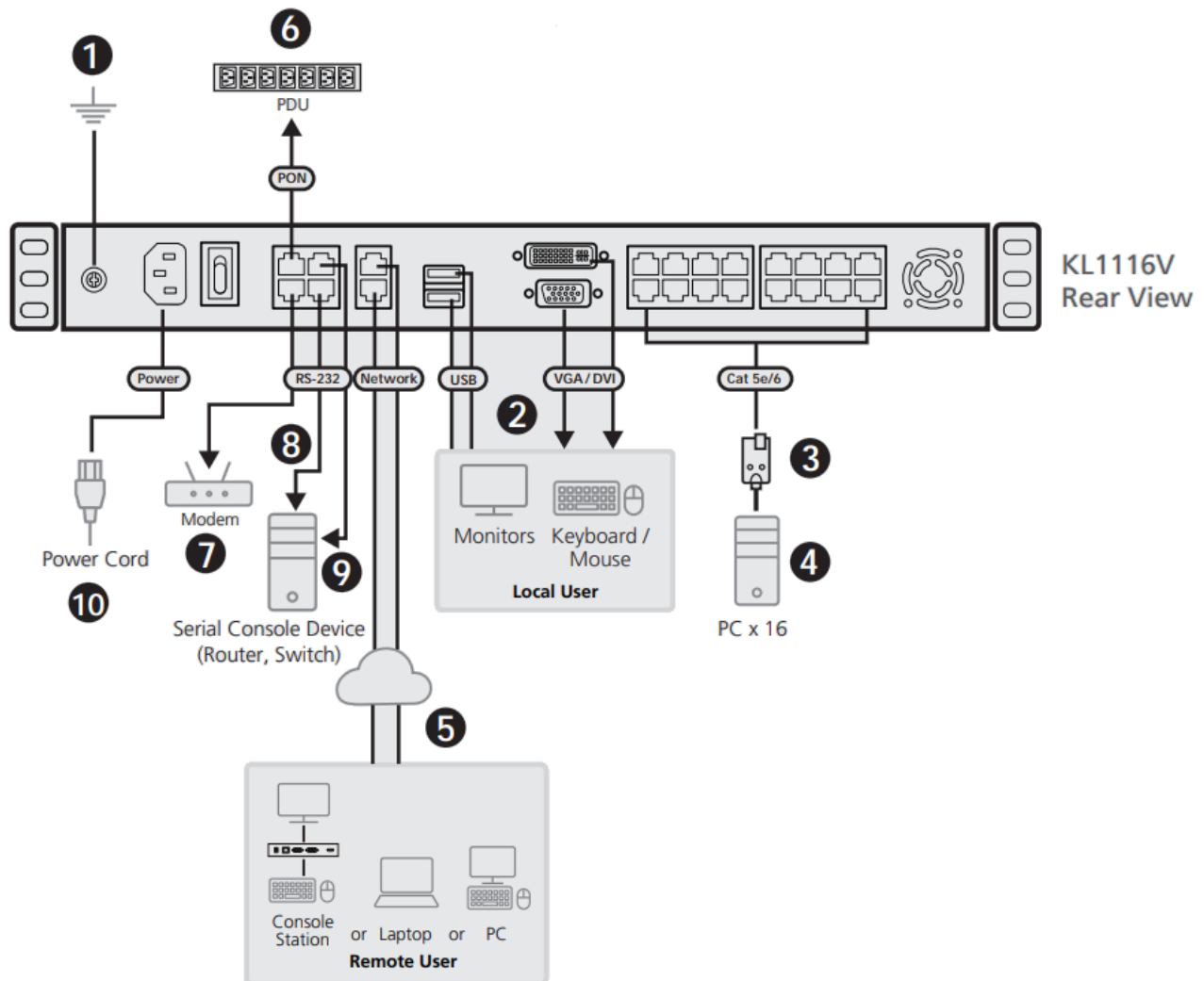
### (Optional) Front-L Bracket Mount

To have a comfortable and safe posture, install the Front-L brackets (supplied in the extension kit) which provide an extension at the front of the rack for the unit to slide further out thus allowing you to tilt the LCD screen more.

For more information on how to mount the Front-L brackets, please refer to the Front-L Bracket / Extension Kit Installation Guide.

## Connecting the Device

### Connecting the Device



1. Use the grounding wire to connect the switch's grounding terminal to a suitable grounded object.
2. Plug your local console's keyboard, monitor (DVI-D or VGA), and mouse into the unit's console ports. Each port is color-coded and marked with an appropriate icon.
3. Use Cat 5e cables to connect any available KVM port to a KVM Adapter Cable.
4. Connect the KVM Adapters to the servers.
5. Plug a cable from the LAN into the KL1108V / KL1116V's primary LAN port or secondary LAN port.
6. (Optional) Use Cat 5e cable to connect the KL1108V / KL1116V PON port to a self-supplied serial adapter. Connect the adapter to the PON IN port of a PDU unit.  
Note: For more information on serial adapter pin assignments, please refer to the user manual.
7. (Optional) Use Cat 5e cable to connect the KL1108V / KL1116V's modem port to a self-supplied serial adapter. And then connect the adapter to the modem's DB-9 port.
8. (Optional) For serial connectivity, use a Cat 5e cable to connect the KL1108V / KL1116V's serial 1 port to a self-supplied serial adapter. And then connect the adapter to the serial device.
9. (Optional) For further serial connectivity, use the Cat 5e cable to connect the KL1108V / KL1116V's serial 2 port

to a self-supplied serial adapter. Connect the adapter to the serial device.

10. Plug the power cord. After the installation is complete, you can turn on the KL1108V / KL1116V's power. After it is powered on, you can turn on the server.

### Support and Documentation Notice

All information, documentation, firmware, software utilities, and specifications contained in this package are subject to change without prior notification by the manufacturer. To reduce the environmental impact of our products, ATEN documentation and software can be found online at <http://www.aten.com/download/>

### Technical Support

[www.aten.com/support](http://www.aten.com/support)

#### Product Page



KL1108V

#### Product Page



KL1116V

#### User Manual



Scan for more information.

**Copyright 2024 ATEN® International Co. Ltd.**

ATEN and the ATEN logo are registered trademarks of ATEN International Co., Ltd.  
All rights reserved. All other trademarks are the property.

**Documents / Resources**



### [ATEN KL1108V Cat 5 Dual Rail LCD KVM over IP Switch](#) [pdf] Instructions

KL1108V, KL1116V, KL1108V Cat 5 Dual Rail LCD KVM over IP Switch, KL1108V, Cat 5 Dual Rail LCD KVM over IP Switch, Rail LCD KVM over IP Switch, LCD KVM over IP Switch, over IP Switch, IP Switch, Switcha

## References

- [📄 ATEN - Simply Better Connections | ATEN U.S.A.](#)
- [📄 Downloads | ATEN Corporate Headquarters](#)
- [User Manual](#)

[Manuals+](#), [Privacy Policy](#)

This website is an independent publication and is neither affiliated with nor endorsed by any of the trademark owners. The "Bluetooth®" word mark and logos are registered trademarks owned by Bluetooth SIG, Inc. The "Wi-Fi®" word mark and logos are registered trademarks owned by the Wi-Fi Alliance. Any use of these marks on this website does not imply any affiliation with or endorsement.