


ATEN
EA1640
Temperature and Humidity Sensor



ATEN EA1640 Temperature and Humidity Sensor Installation Guide

[Home](#) » [Aten](#) » ATEN EA1640 Temperature and Humidity Sensor Installation Guide 

Contents

- [1 ATEN EA1640 Temperature and Humidity Sensor](#)
- [2 Product Information](#)
- [3 Product Usage Instructions](#)
- [4 Package Contents](#)
- [5 Hardware Overview](#)
- [6 Installation](#)
- [7 LED](#)
- [8 Connecting EA1640 Sensors in Series](#)
- [9 Documents / Resources](#)
 - [9.1 References](#)
- [10 Related Posts](#)



ATEN EA1640 Temperature and Humidity Sensor



Product Information

Specifications:

- **Model:** EA1640
- **Connection Ports:** Signal In Port, Signal Out Port, Sensor Port, 4-Pin Terminal Block
- **Mounting:** Magnetic Mount, Rack Mount Kits (Vertical and Horizontal Installation)

Product Usage Instructions

Hardware Overview:

- **Signal In Port:** Connect to the sensor port of PG series PDU or the signal out port of the last EA1640 using an RJ-45 cable.
- **Signal Out Port:** Connect to the signal in port of the next EA1640 using an RJ-45 cable.
- **Sensor Port:** Connect to ATEN Temperature Sensor (EA1140 / EA1240 / EA1340) using an RJ-11 cable.
- **4-Pin Terminal Block:** Use to wire to ATEN Door Sensor (EA1440 / EA1441 / EA1442) or ATEN Capacitive Leakage Sensor (EA1540).

Installation:

Magnetic Mount:

1. Ensure the surface is metallic and flat.
2. Directly attach the EA1640 to the surface using the built-in magnets.

Attaching / Detaching the Rack Mount Kits:

- Slide the rack mount kits into the mounting plate grooves for attachment.
- To remove, press and hold the release buttons and pull out.

Vertical Installation:

- Align rack mount kits screw holes with the rack's and secure with self-supplied screws.

Horizontal Installation:

- Attach one rack mount kit to the EA1640 and secure it onto the system rack with self-supplied screws.

Keyhole (Mounting Hole) of Rack Mount Kits:

- To secure with screws, thread through the small end of the keyhole and fasten.
- If using M6 screws, follow specific instructions provided.

LED Status:

The EA1640 Humidity and Temperature Sensor features LED illumination visible through the transparent enclosure for status indication.

Frequently Asked Questions (FAQ):

- **Q: Can I use any RJ-45 cable for connections?**

A: It is recommended to use high-quality RJ-45 cables for reliable connections.

- **Q: How do I know if the sensor is working correctly?**

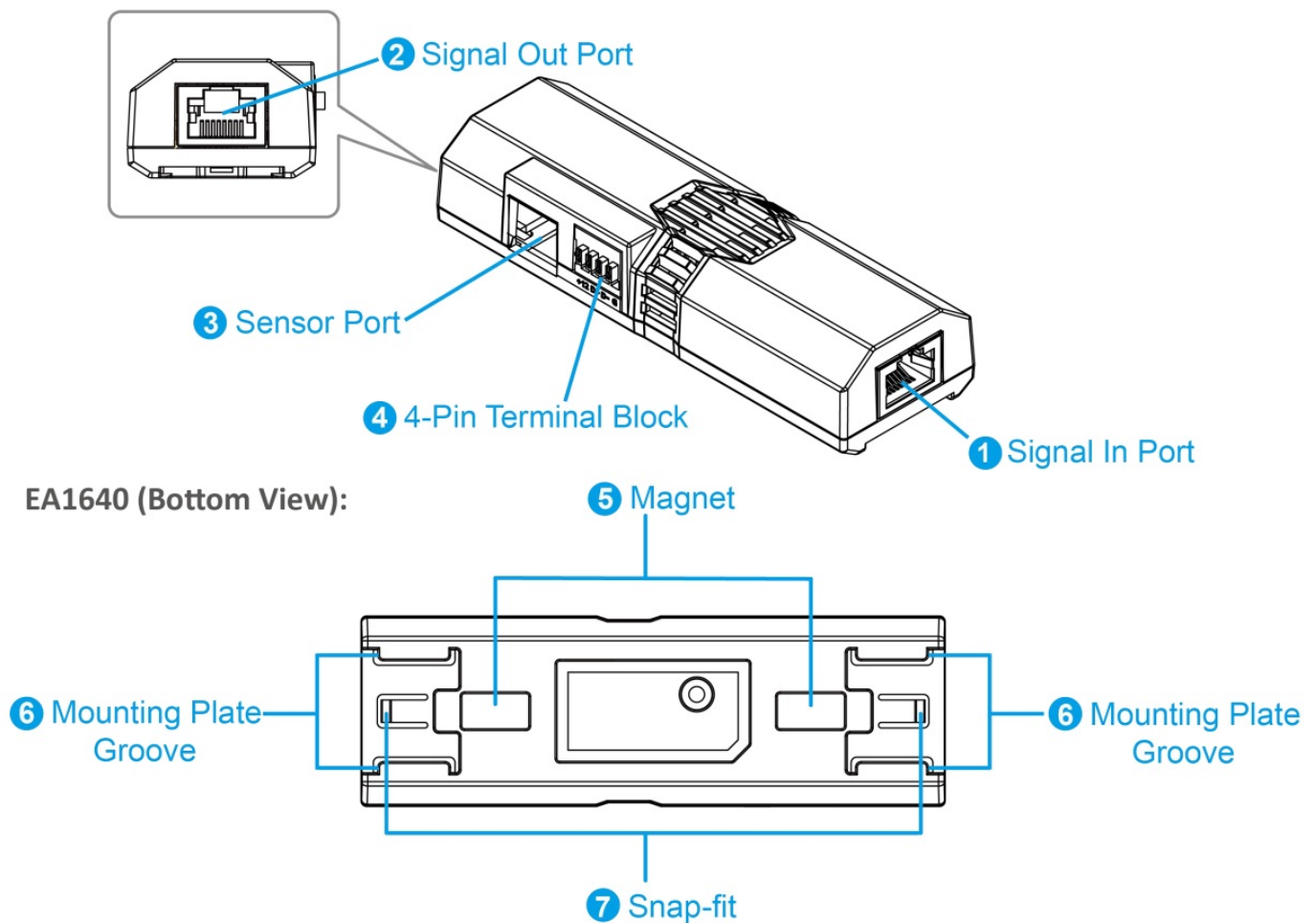
A: The LED illumination on the sensor provides status indication for operational feedback.

Package Contents

Qty	Description
1	EA1640 Humidity and Temperature Sensor
1	RJ-45 cable (1.5m)
2	rack mount kits
1	user instructions

Hardware Overview

EA1640 Humidity and Temperature Sensor consists of the following components as illustrated below:



1. Signal In Port

Use an RJ-45 cable to connect to the sensor port of PG series PDU or the signal out port of the last EA1640.

2. Signal Out Port

Use an RJ-45 cable to connect to the signal in port of the next EA1640.

3. Sensor Port

Use an RJ-11 cable to connect to ATEN Temperature Sensor (EA1140 / EA1240 / EA1340).

4. 4-Pin Terminal Block

Use the sensor terminal to wire to ATEN Door Sensor (EA1440 / EA1441 / EA1442) or ATEN Capacitive Leakage Sensor (EA1540).

5. Magnets

6. Mounting Plate Grooves

7. Snap-fit

Installation

At the bottom side of the EA1640 Humidity and Temperature Sensor, there are 2 magnets for easy attachment to metallic surfaces, and the mounting plate grooves for attaching the rack mount kits.

Magnetic Mount

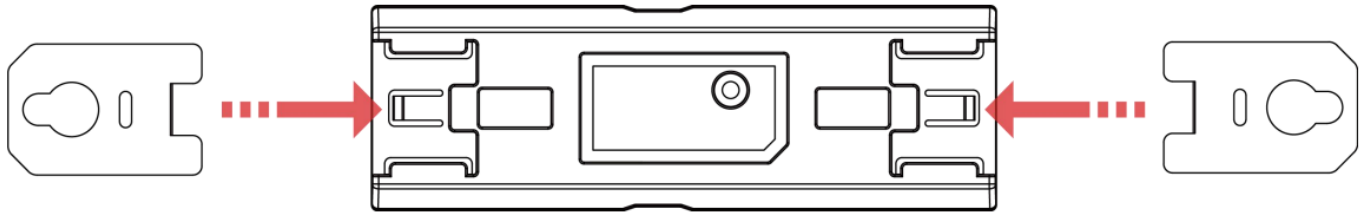
To mount the EA1640 Humidity and Temperature Sensor by its built-in magnets:

1. Make sure that the surface to be attached to is metallic and flat.

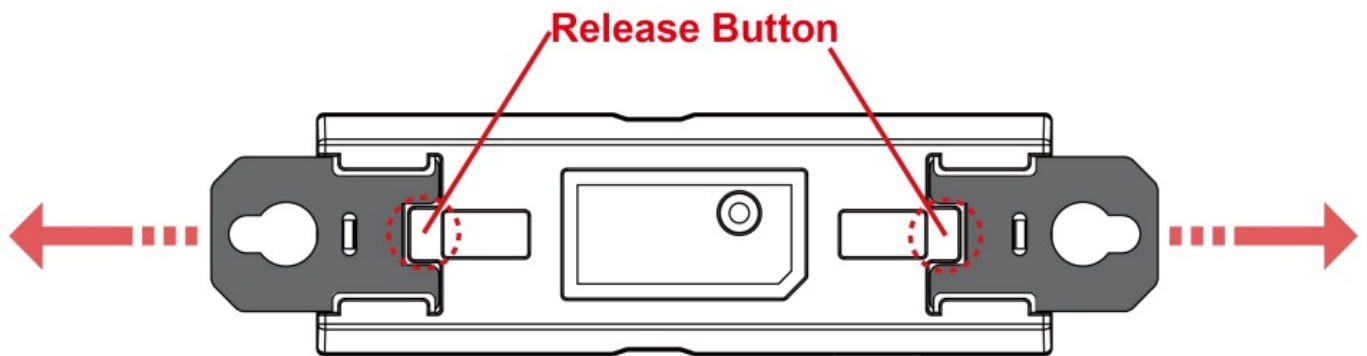
2. Directly attach the EA1640 to the surface.

Attaching / Detaching the Rack Mount Kits

To install the rack mount kits to the EA1640 Humidity and Temperature Sensor, please slide the rack mount kits into the mounting plate grooves as illustrated below. A “click” sound is made once the rack mount kit is firmly attached to the EA1640.

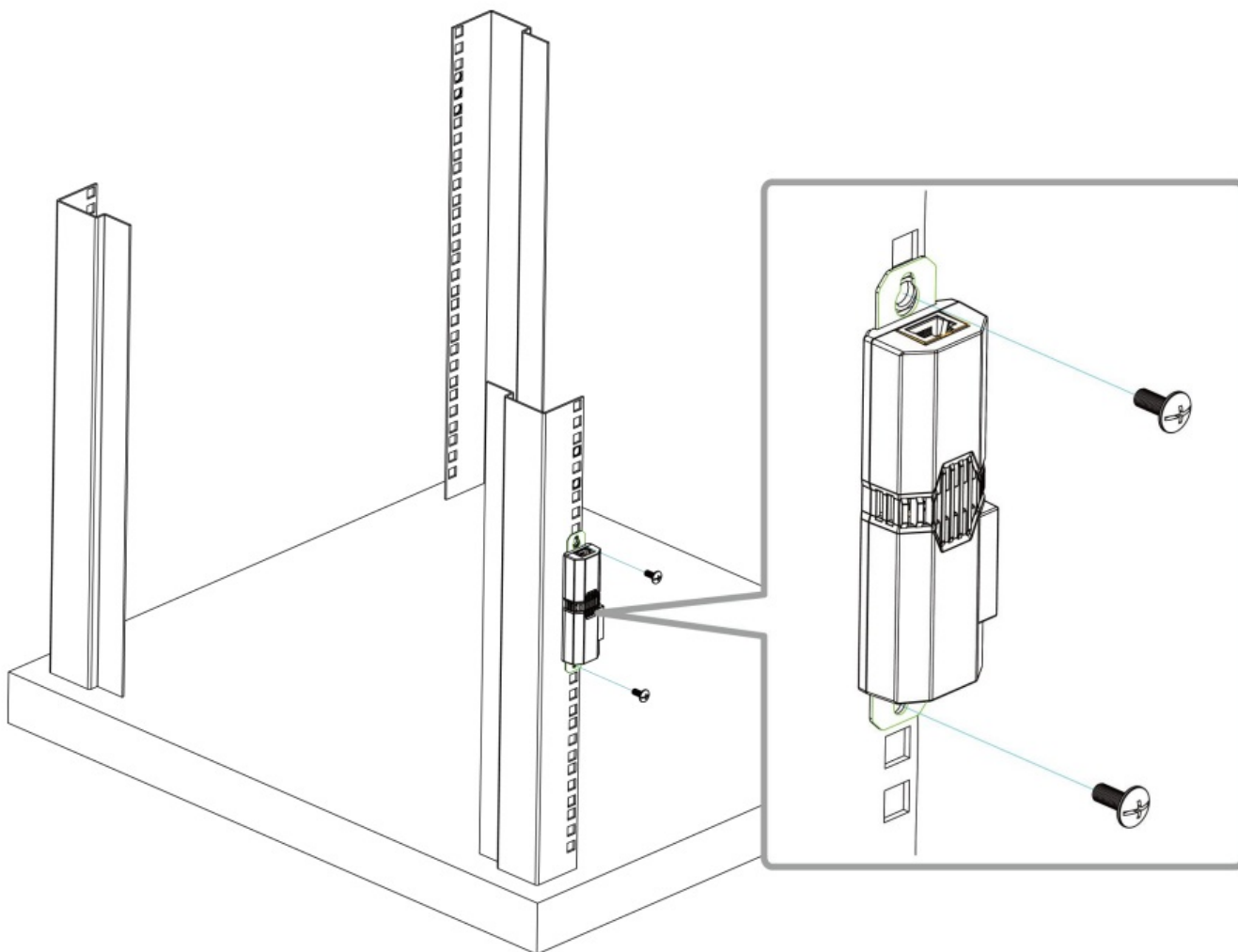


To remove the rack mount kits from the EA1640, press and hold the release buttons and pull the rack mount kits out.



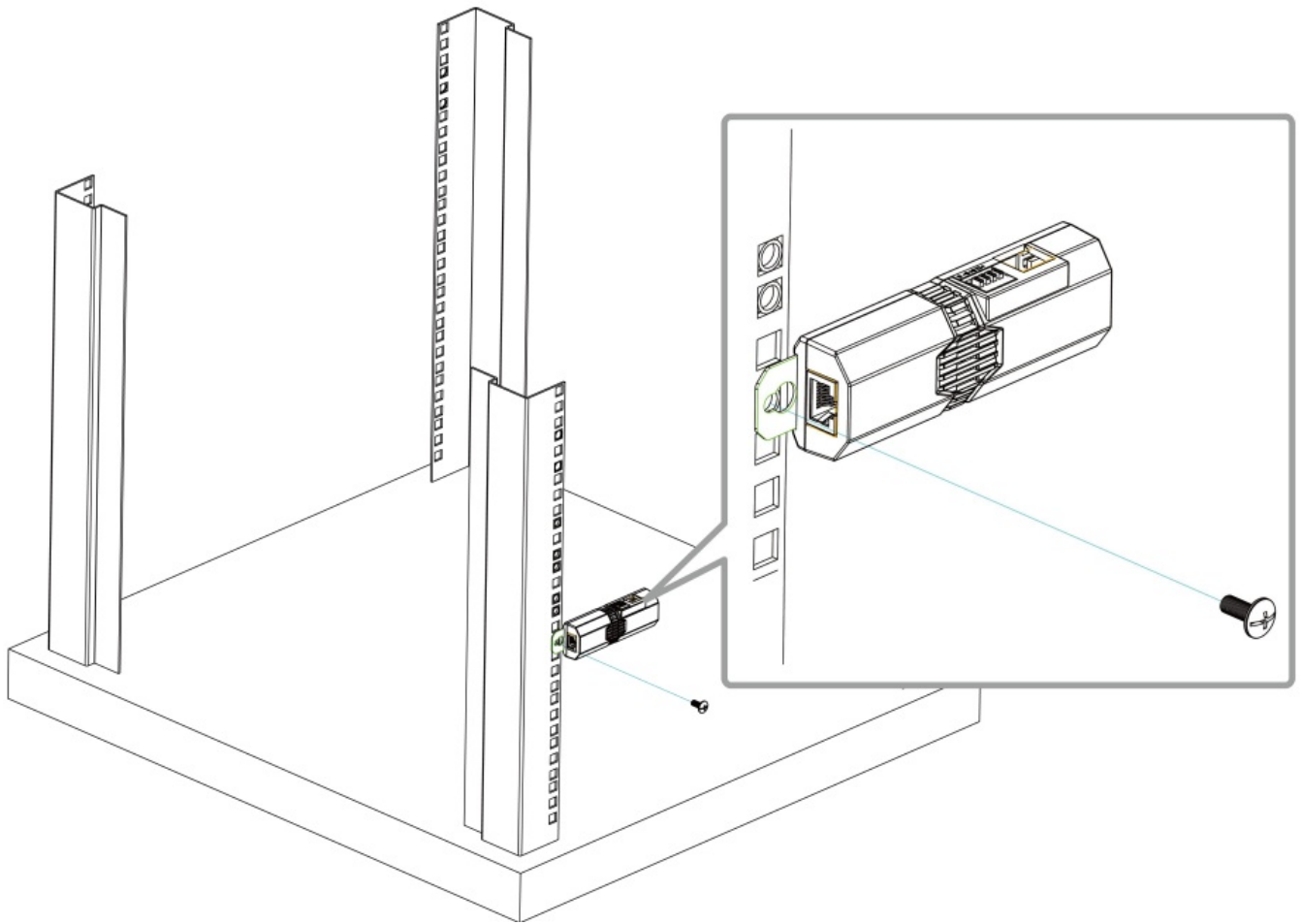
Vertical Installation

To mount the EA1640 Humidity and Temperature Sensor to the system rack vertically, align the rack mount kits screw holes with that of the rack, and use the self-supplied screws to secure the EA1640 onto the rack.



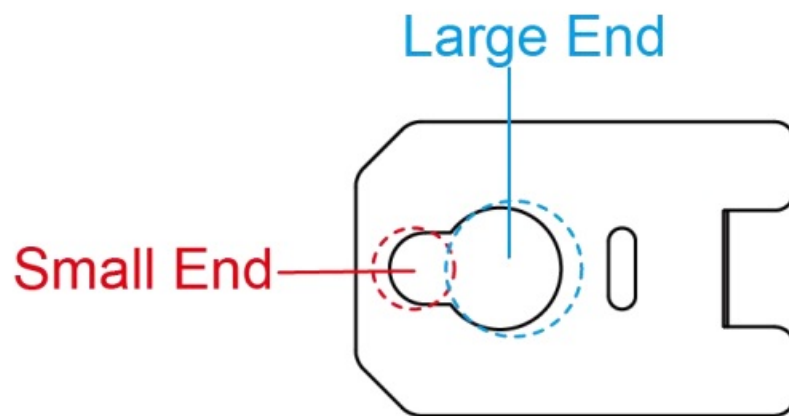
Horizontal Installation

To install the EA1640 onto the system rack horizontally, you only need to attach one rack mount kit to the EA1640. Mount the EA1640 to the system rack, and secure it onto the rack with self-supplied screw.

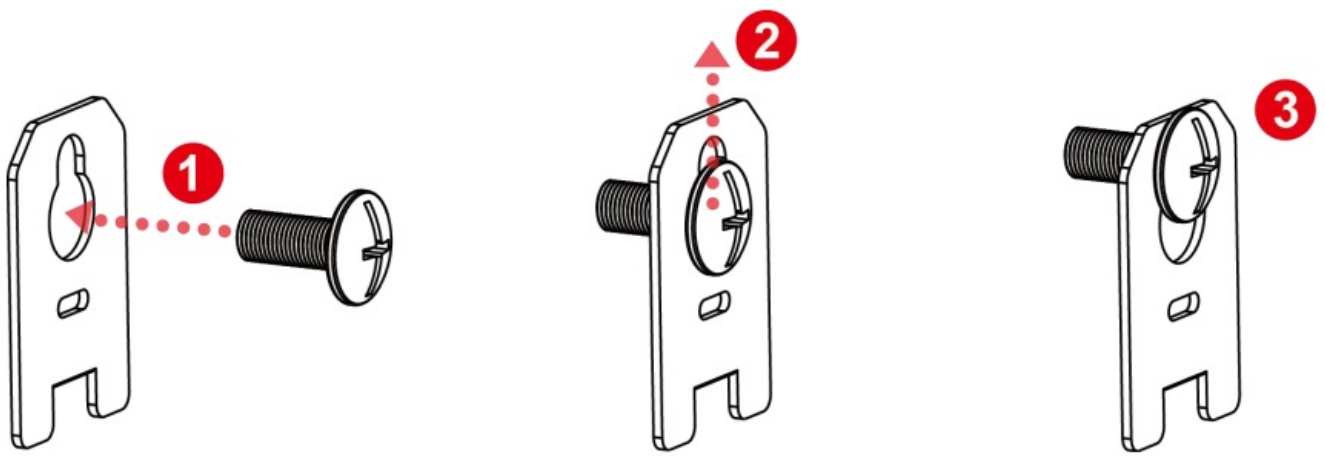


Keyhole (Mounting Hole) of Rack Mount Kits

To firmly secure the rack mount kit with your self-supplied screw, please thread the screw through the small end of the keyhole (mounting hole) and then fasten the screw.



If the self-supplied screw is M6 screw, do the followings:



1. Insert the self-supplied M6 screw into the large end of the hole.
2. Move the screw toward to the small end of the hole.
3. Fasten the screw.

LED

The EA1640 Humidity and Temperature Sensor is equipped with the LED illumination which is visible through the transparent enclosure. The LED illumination delivers the following status:

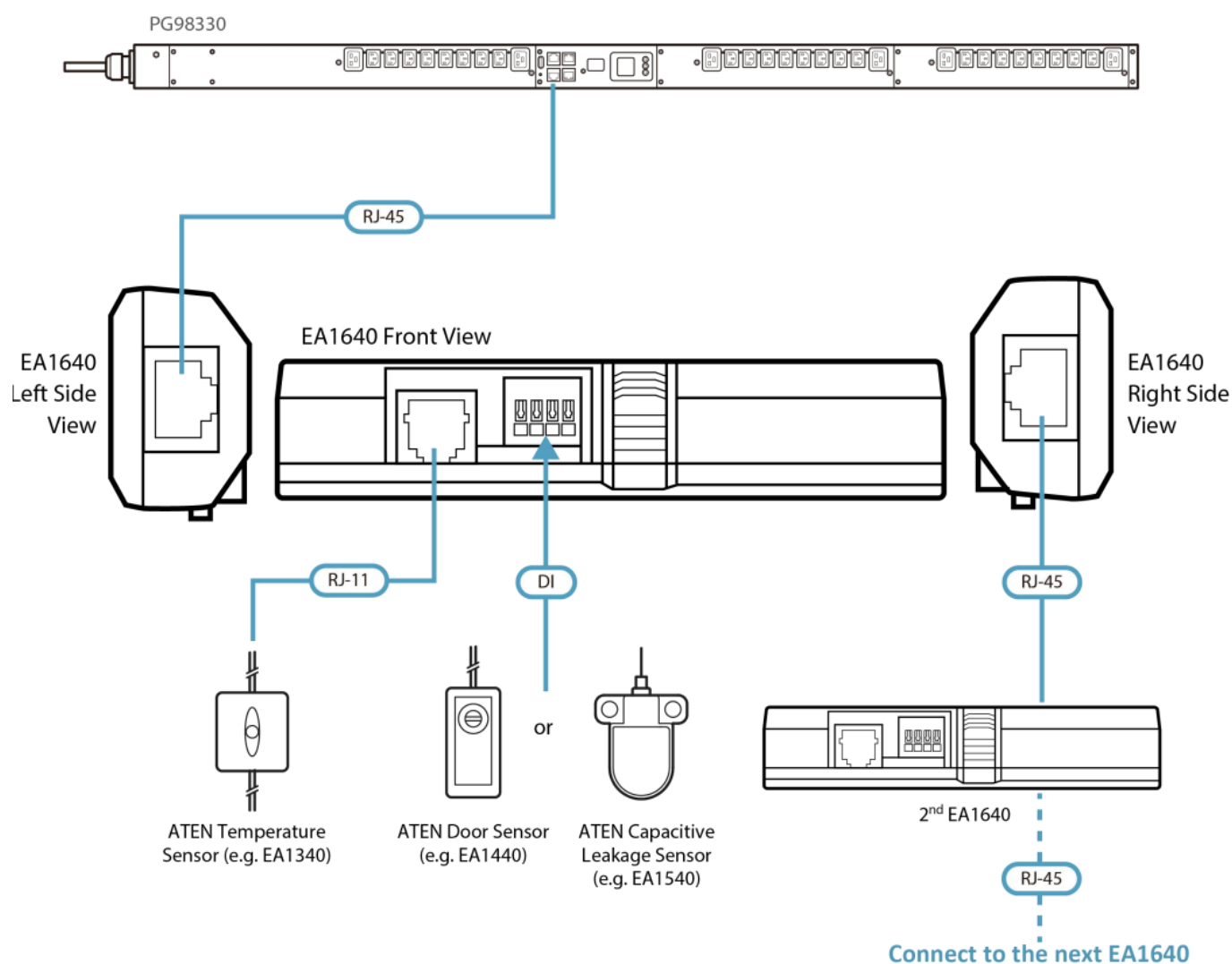
LED	Description
Solid	EA1640 is in working mode.
Fast Blinking (for 2 minutes)	EA1640 receives the command “FindMe”.
Slow Blinking (for 10 seconds)	Over-current protection (OCP) is triggered, and the sensor(s) connected to EA1640 is going to power off.
Slow Blinking	Firmware upgrade of EA1640 is in progress.

Connecting EA1640 Sensors in Series

To connect the EA1640 sensors in series through the signal in and signal out ports using RJ-45 cables, refer to the table below for the maximum number of units:

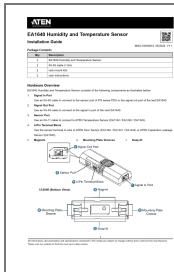
Sensor to be Connected to EA1640 Using RJ-11 Cable	The Maximum Number of EA1640 Sensors
No sensors connected to the EA1640 sensors	8
Every serially connected EA1640 connects with a terminal sensors. (Estimated based on the highest power consumption model, EA1440.)	3
Every serially connected EA1640 connects with an RJ-11 sensor. (Estimated based on the highest power consumption model, EA1340.)	7
Every EA1640 connects with a terminal sensor & an RJ-11 sensor.	3

Note: The maximum transmission distance for 8 units connected in series is 40 meters.



All information, documentation and specifications contained in this media are subject to change without prior notice by the manufacturer. Please visit our website to find the most up-to-date version.

Documents / Resources



[ATEN EA1640 Temperature and Humidity Sensor](#) [pdf] Installation Guide
EA1640, EA1140, EA1240, EA1340, EA1440, EA1441, EA1442, EA1540, EA1640 Temperature and Humidity Sensor, EA1640, Temperature and Humidity Sensor, Humidity Sensor, Sensor

References

- [User Manual](#)

[Manuals+.](#) [Privacy Policy](#)

This website is an independent publication and is neither affiliated with nor endorsed by any of the trademark owners. The "Bluetooth®" word mark and logos are registered trademarks owned by Bluetooth SIG, Inc. The "Wi-Fi®" word mark and logos are registered trademarks owned by the Wi-Fi Alliance. Any use of these marks on this website does not imply any affiliation with or endorsement.