



# ATEN CS682 2-Port USB 2.0 DVI KVM Switch with Audio User Guide

[Home](#) » [Aten](#) » ATEN CS682 2-Port USB 2.0 DVI KVM Switch with Audio User Guide 

## ATEN CS682 2-Port USB 2.0 DVI KVM Switch with Audio

### Contents

- 1 Package Contents
- 2 Requirements
  - 2.1 Console
  - 2.2 Computers
- 3 Hardware Review A
- 4 Hardware Installation B
- 5 Operation
  - 5.1 Manual Port Selection
  - 5.2 Mouse Port Selection
  - 5.3 Hotkey Port Selection
  - 5.4 Hotkey Summary Table
  - 5.5 Scan Interval Table
- 6 Troubleshooting
  - 6.1 EMC Information
- 7 Documents / Resources
  - 7.1 References
- 8 Related Posts



## Package Contents

- 1 CS682 2-Port USB 2.0 DVI KVM Switch
- 1 Remote Port Selector
- 1 User Manual
- 1 Quick Start Guide

## Requirements

### Console

- A DVI monitor capable of the highest resolution that you will be using on any computer in the installation
- A USB keyboard and a USB mouse
- Speakers and microphone (optional)

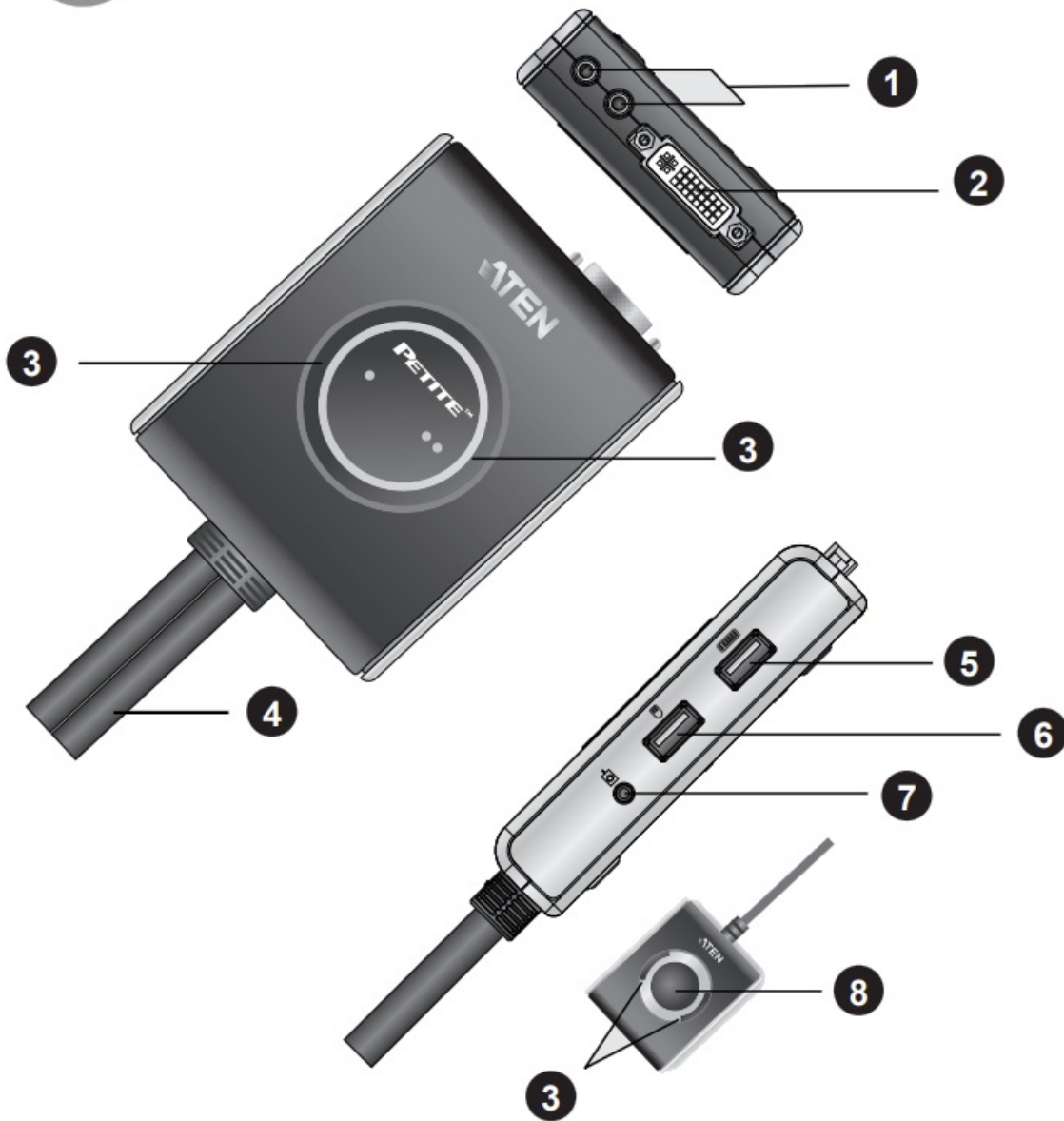
### Computers

The following equipment must be installed on each computer that is to be connected to the system:

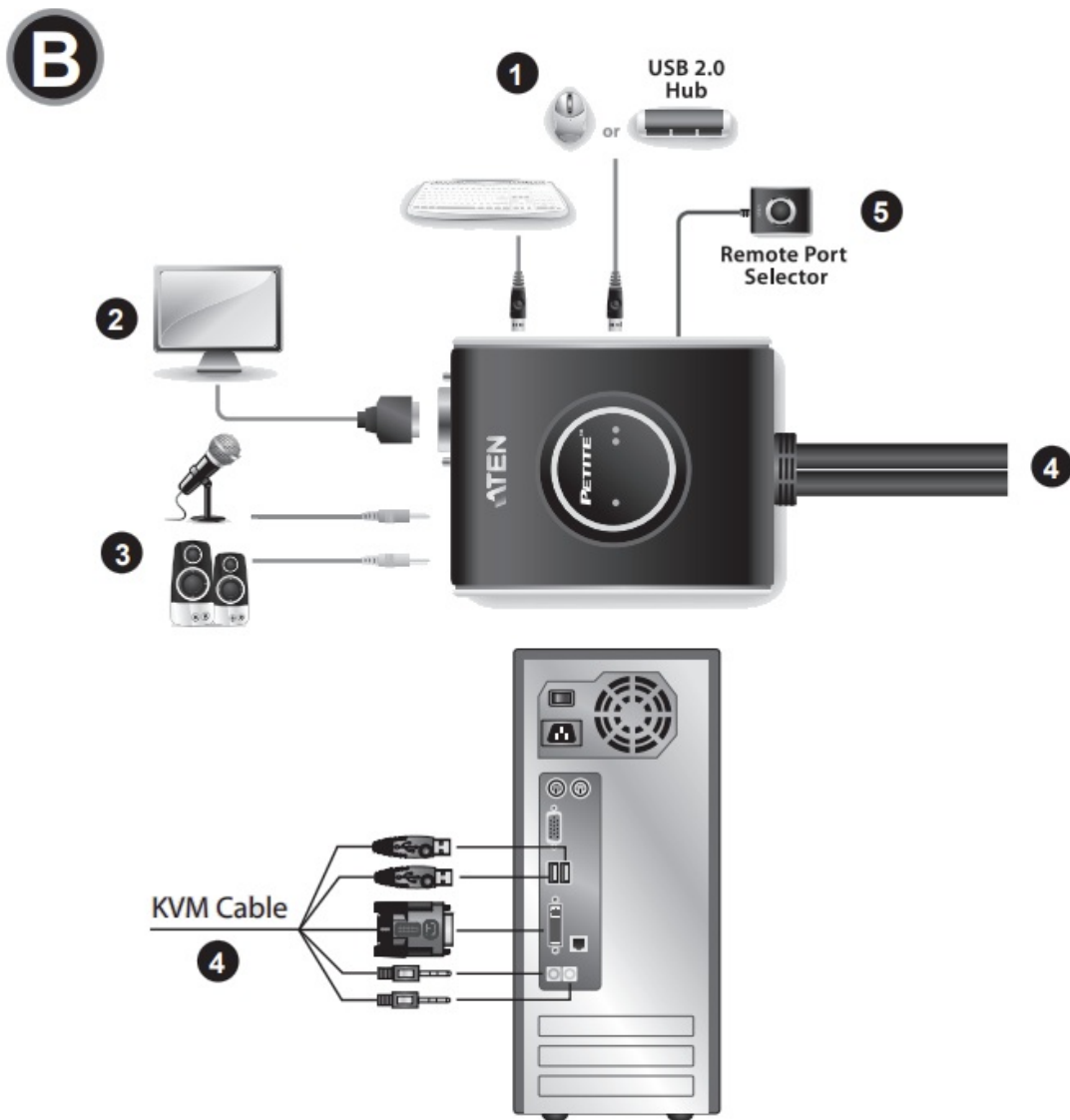
- A DVI video port
- USB Type A port
- Speaker and microphone ports (optional)

## Hardware Review A

**A**



## Hardware Installation B



To prevent damage to your installation from power surges or static electricity, it is important that all connected devices are properly grounded.

Make sure that the power to any device that you connect to the installation has been turned off. You must unplug the power cords of any computers that have the Keyboard Power On function.

Make sure that all devices you will be installing are properly grounded.

1. Plug your keyboard and mouse into their USB ports, located on the side of the CS682. The ports are color coded and labeled with an appropriate icon.  
**Note:** The mouse connector is actually a USB 2.0 port, and can accept any USB compatible peripheral. You can even connect a hub to install multiple USB devices (This may require an extra power adapter).
2. Plug your monitor into the DVI port, located on the front of the CS682. Power on the monitor.
3. Plug your speakers and microphone into the console audio ports, located on the front of the CS682 (Optional).
4. Plug the keyboard, monitor, mouse, and audio connectors of the KVM cables into their respective ports on the computers you are installing.
5. If you choose to use the remote port selector, plug its cable into the remote port selector jack, located on the side of the unit.
6. Power on the computers.

**Note:** By default the switch links to the first computer that is powered on.

Operation

Manual Port Selection

Press the port selection pushbutton on the Remote Port Selector to toggle the KVM and Audio focus between the two computers. The Port LED lights to indicate that the computer attached to its corresponding port has the focus.  
**Note:** Do not switch ports while a USB device is in operation. For independent USB switching, please see the USB KVMP switches on our website.

Mouse Port Selection

Simply double-click the scroll wheel on your USB mouse to switch between ports. The mouse port switching function allows you to toggle back and forth between the ports

Hotkey Port Selection

All hotkey operations begin by tapping the Scroll Lock key twice.  
**Note:** If using [Scroll Lock] conflicts with other programs, [Ctrl] can be used instead.

Hotkey Summary Table

Combination		Function
	[Enter]	Toggles the KVM and Audio focus between the two ports. Note: If the KVM and Audio focus are on different ports, only the KVM focus switches.
	[k] [Enter]	Only toggles the KVM focus.
	[s] [Enter]	Only toggles the Audio focus.
	[a] [Enter] [n]	Starts Auto Scan. The KVM focus cycles from port to port at n second intervals. Note: Replace n with a number between 1 and 4 (see Scan Interval Table below).
	[x] [Enter]	Toggles the hotkey invocation key between [Scroll Lock] and [Ctrl].

[Scroll Lock] [Scroll Lock] +	[m] [Enter]	Enables/disables mouse emulation function.
	[w] [Enter]	Enables/disables mouse port-switching function.
	[F2] [Enter]	Activates Mac keyboard mapping.
	[F3] [Enter]	Activates Sun keyboard mapping.
	[F10] [Enter]	Auto detects keyboard operating platform.
	[F4] [Enter]	Lists current switch settings.
	[F5] [Enter]	Performs a USB keyboard and mouse reset.
	[d] [Enter]	Invokes the Video Dyna Sync™ function, which stores the monitor's EDID to optimize display resolution.
	[R] [Enter]	Resets hotkeys to the default setting.

**Scan Interval Table**

<b>n</b>	<b>Secs.</b>
1	3 secs.
2	5 secs. (default)
3	10 secs.
4	20 secs.

## Troubleshooting

Symptom	Possible Cause	Action
Monitor does not display after the KVM cable set is hot-plugged.	DVI graphics card is not compatible with cable set hot-plugging.	Power off all devices on the installation; power off the CS682; confirm all KVM cables are properly connected; power on the CS682; power on the computers.
	Graphics card driver is not up-to-date.	Upgrade to the latest graphics card driver.
Mouse and/or keyboard is not responding.	Switch needs to be reset.	Power off all devices on the installation; power off the CS682; wait five seconds; power on the CS682 again.
Mouse port-switching function is not responding.	Mouse does not support this function.	This feature is only supported by USB 3-key scroll wheel mice.
	Mouse emulation is disabled.	Enable mouse emulation.
Cannot switch ports by pressing [Scroll Lock] twice.	Keyboard is incompatible with [Scroll Lock] invocation.	Switch to the alternate HSM invocation keys.

### Support and Documentation Notice

All information, documentation, firmware, software utilities, and specific configurations contained in this package are subject to change without prior notification by the manufacturer.

To reduce the environmental impact of our products, ATEN documentation and software can be found online at <http://www.aten.com/download/>

### Technical Support

[www.aten.com/support](http://www.aten.com/support)

### Scan for more information



#### FEDERAL COMMUNICATIONS COMMISSION INTERFERENCE STATEMENT:

This equipment has been tested and found to comply with the limits for a Class A digital device, pursuant to Part 15 of the FCC Rules.

These limits are designed to provide reasonable protection against harmful interference when the equipment is operated in a commercial environment. This equipment generates, uses, and can radiate radio frequency energy and, if not installed and used in accordance with the instruction manual, may cause harmful interference to radio communications. Operation of this equipment in a residential area is likely to cause harmful interference in which case the user will be required to correct the interference at his own expense.

**FCC Caution:** Any changes or modifications not expressly approved by the party responsible for compliance could void the user's authority to operate this equipment.

**Warning:** Operation of this equipment in a residential environment could cause radio interference.


**Suggestion:** Shielded twisted pair (STP) cables must be used with the unit to ensure compliance with FCC & CE standards.

This device complies with Part 15 of the FCC Rules. Operation is subject to the following two conditions:(1) this device must not cause harmful interference, and(2) this device must accept any interference received, including interference that may cause undesired operation.

**Important.** Before proceeding, download the Installation and Operation Manual by visiting the website, [www.ATEN.com](http://www.ATEN.com) and navigating to the product page. The manual includes important warnings, loading specifications and grounding instructions.



#### Documents / Resources

	<p><a href="#">ATEN CS682 2-Port USB 2.0 DVI KVM Switch with Audio</a> [pdf] User Guide CS682 2-Port USB 2.0 DVI KVM Switch with Audio, CS682, 2-Port USB 2.0 DVI KVM Switch with Audio, USB 2.0 DVI KVM Switch, DVI KVM Switch, KVM Switch, Switch</p>
-------------------------------------------------------------------------------------	-------------------------------------------------------------------------------------------------------------------------------------------------------------------------------------------------------------------------------------------------------------

#### References

- [ATEN - Simply Better Connections | ATEN U.S.A.](#)
- [Downloads | ATEN Corporate Headquarters](#)