




# ATEN CS64U/CS64US 4 Port USB KVM Switch User Guide

[Home](#) » [Aten](#) » ATEN CS64U/CS64US 4 Port USB KVM Switch User Guide 

## Contents

- 1 CS64U/CS64US**
  - 1.1 4-Port USB KVM Switch User Guide**
  - 1.2 Package Contents**
  - 1.3 Hardware Review**
    - 1.3.1 A CS64U / CS64US**
    - 1.3.2 B KVM Cable Connectors**
    - 1.3.3 C Hardware Installation**
  - 1.4 Requirements**
    - 1.4.1 Console**
    - 1.4.2 Computers**
    - 1.4.3 Cables**
  - 1.5 Hardware Review A B**
  - 1.6 Hardware Installation C**
    - 1.6.1 Important**
  - 1.7 Operation**
    - 1.7.1 Port Switching**
    - 1.7.2 Invoking Hotkey Setting Mode (HSM)**
    - 1.7.3 Auto Scanning**
    - 1.7.4 Hotkey Summary Table**
  - 1.8 Specifications**
- 2 Documents / Resources**
  - 2.1 References**
- 3 Related Posts**



## CS64U/CS64US

4-Port USB KVM Switch  
User Guide

© Copyright 2019 ATEN® International Co., Ltd.

ATEN and the ATEN logo are trademarks of ATEN International Co., Ltd. All rights reserved. All other trademarks are the property of their respective owners.

This product is RoHS compliant.

Part No. PAPE-1285-M02G

Printing Date: 05/2019

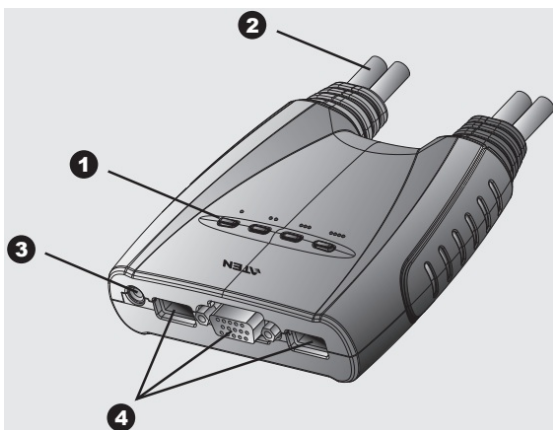


## Package Contents

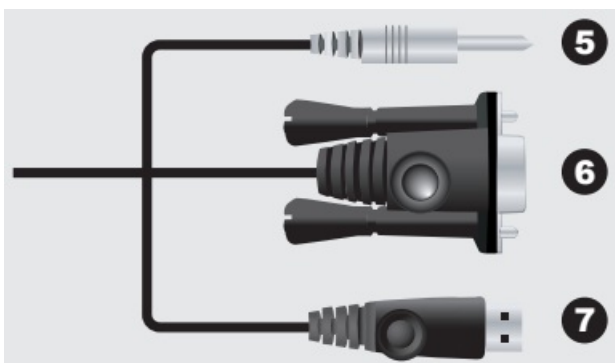
1 4-Port CS64U USB KVM Switch or  
1 4-Port CS64US USB KVM Switch  
1 User Instructions

## Hardware Review

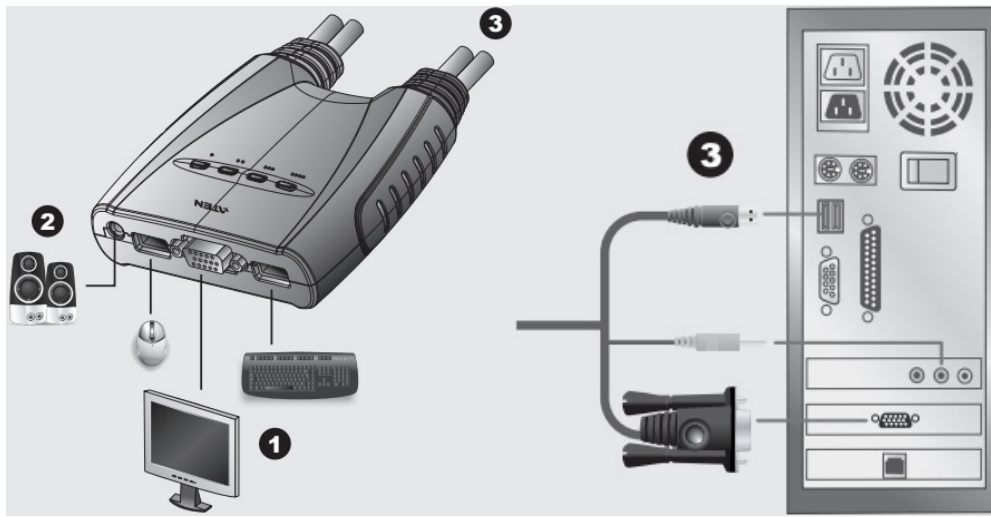
### A CS64U / CS64US



### B KVM Cable Connectors



### C Hardware Installation



To prevent damage to your installation from power surges or static electricity, it is important that all connected devices are properly grounded.

All information, documentation, and specifications contained in this media are subject to change without prior notification by the manufacturer. Please visit our website to find the most up to date version.

### Important Notice

Considering environmental protection, ATEN does not provide a fully printed user manual for this product. If the information contained in the Quick Start Guide is not enough for you to configure and operate your product, **please visit our website [www.aten.com](http://www.aten.com), and download the full user manual.**

**Online Registration**  
<http://eservice.aten.com>

**North America:**  
 1-888-999-ATEN Ext: 4988

**Technical Phone Support**  
 International:  
 886-2-86926959

**United Kingdom:**  
 44-8-4481-58923

### EMC Information

#### FEDERAL COMMUNICATIONS COMMISSION INTERFERENCE STATEMENT:

This equipment has been tested and found to comply with the limits for a Class B digital service, pursuant to Part 15 of the FCC rules. These limits are designed to provide reasonable protection against harmful interference in a residential installation. Any changes or modifications made to this equipment may void the user's authority to operate this equipment. This equipment generates, uses, and can radiate radio frequency energy. If not installed and used in accordance with the instructions, may cause harmful interference to radio communications. However, there is no guarantee that interference will not occur in a particular installation. If this equipment does cause harmful interference to radio or television reception, which can be determined by turning the equipment off and on, the user is encouraged to try to correct the interference by one or more of the following measures:

- Reorient or relocate the receiving antenna;
- Increase the separation between the equipment and receiver;
- Connect the equipment into an outlet on a circuit different from that to which the receiver is connected;
- Consult the dealer/an experienced radio/television technician for help.

**FCC Caution:** Any changes or modifications not expressly approved by the party responsible for compliance could void the user's authority to operate this equipment.

This device complies with Part 15 of the FCC Rules. Operation is subject to the following two conditions:(1) this device must not cause harmful interference, and(2) this device must accept any interference received, including interference that may cause undesired operation.

All information, documentation, firmware, software utilities, and specifications contained in this package are subject to change without prior notification by the manufacturer. Please visit our website <http://www.aten.com/download/?cid=dds> for the most up-to-date versions.

## Requirements

### Console

- A VGA, SVGA, or multisync monitor capable of the highest resolution that you will be using on any computer in the installation
- A USB Keyboard and a USB Mouse
- Speakers (optional)

### Computers

The following equipment must be installed on each computer that is to be connected to the system:

- A VGA, SVGA, or multisync video port
- USB Type A port
- Speaker port (optional)

### Cables

The CS64U / CS64US's innovative design features built-in KVM and speaker cables for extra convenience. No further cables are necessary.

## Hardware Review A B

1. Port LEDs
2. KVM Cables
3. Speaker Jack
4. Console Ports
5. Speaker Plug
6. Video Connector
7. USB Keyboard/Mouse connector

**Note:** The KVM cable connectors are the same on both models.

## Hardware Installation C

### Important

1. Make sure that the power to any device that you connect to the installation has been turned off. You must

- unplug the power cords of any computers that have the Keyboard Power On function.
2. Make sure that all devices you will be installing are properly grounded.

Setting up the CS64U / CS64US USB KVM Switch is quick and easy. Refer to the installation diagrams:

1. Plug your USB keyboard, USB mouse, and monitor into their ports on the CS64U / CS64US.  
**Note:** When using a wireless keyboard and mouse combo, the dongle must plug into the CS64U / CS64US's keyboard port in order for the hotkeys to function.
2. Plug your speakers into the speaker jack.
3. Plug the USB, video, and audio connectors of the attached KVM cables into their respective ports on the computers you are installing.
4. Power on the computers.  
**Note:** The CS64U / CS64US's power on default is to link to the first computer that is powered on.

## Operation

### Port Switching

See the following table for full details.

Hotkey		Action
[Scroll Lock] [Scroll Lock]	[Enter]	Brings the KVM and Audio focus from the port that currently has the KVM focus to the next port on the installation (1 to 2; 2 to 3; 3 to 4; 4 to 1) <b>Note:</b> If the KVM and Audio focus are on different ports, only the KVM focus switches.
	[n] [Enter]	Brings the KVM and Audio focus to the computer attached to the corresponding Port ID. <b>Note:</b> Replace n with the port number (1, 2, 3, 4).

**Note:** If using the Scroll Lock key conflicts with other programs running on the computer, the Ctrl key can be used instead.

### Invoking Hotkey Setting Mode (HSM)

All hotkey operations begin by holding the Num Lock key, pressing and releasing the **Minus** key, then releasing the Num Lock key. See the the following tables for full details.

**Note:** If using [Num Lock] [-] conflicts with other programs, [Ctrl] [F12] can be used instead.

### Auto Scanning

Hotkey	Action
[Scroll Lock] [Scroll Lock] [a] [Enter]	Starts Auto Scan. The KVM focus cycles from port to port at 5-second intervals.
[Scroll Lock] [Scroll Lock] [a] [n] [Enter]	Starts Auto Scan. The KVM focus cycles from port to port at n-second intervals. Note: Replace n with a number between 1 and 99.

**Note:** To exit Auto Scan, press [Esc] or [Spacebar]. Auto Scanning stops when you exit Auto Scan mode.

Hotkey Summary Table

Combination		Function
[Num Lock] [-]	[H]	Toggles between the default [Num Lock] [-] and alternate [Ctrl][F12] HSM invocation keys.
	[T]	Toggles between the default [Scroll Lock] [Scroll Lock] and alternate [Ctrl][Ctrl] port switching keys.
	[F2]	Activates Mac keyboard mapping.
	[F3]	Activates Sun keyboard mapping.
	[F10]	Auto detects keyboard operating platform.
	[F4]	Lists current switch settings via the paste function of a text editor.
	[F5]	Performs a USB keyboard and mouse reset.
	[F6] [nn] [Enter]	Sets the keyboard language layout. Note: nn is a two-digit number that represents one of the following keyboard language codes: US English 33; French 08; Japanese 15.
	[r] [Enter]	Resets hotkeys to the default setting.
	[u] [p] [g] [r] [a] [d] [e] [Enter]	Invokes Firmware Upgrade Mode. (CS64US only)
[Esc] or [Space Bar]		Quits hotkey setting mode.


**Note:** For further information, please download the complete User Manual from [www.aten.com](http://www.aten.com)

## Specifications

Function			CS64U	CS64US
Computer Connections			4	
Port Selection			Hotkeys	
Connectors	Console Ports	Keyboard	1 x USB Type A Female (White)	
		Video	x HDB-15 Female (Blue)	
		Mouse	1 x USB Type A Female (White)	
		Speaker	1 x Mini Stereo Jack Female (Green)	
	KVM Ports	Keyboard / Mouse	4 x USB Type A Male (White)	
		Video	4 x HDB-15 Male (Blue)	
		Speaker	4 x Mini Stereo Jack Male (Green)	
LEDs	Selected		4 (Green)	
Cable Length			1.8 m	0.9 m / 1.2 m
Emulation	Keyboard / Mouse		USB	
Video			2048 x 1536; DDC2B	
Scan Interval			1-99 secs. (default 5 secs.)	
Environment	Operating Temp.		0-50°C	
	Storage Temp.		-20-60°C	
	Humidity		0 80% RH, Non-condensing	
Physical Properties	Housing		Plastic	
	Weight		0.80 kg	0.77kg
	Dimensions (L x W x H)		9.41 x 9.72 x 2.60 cm	

[www.aten.com](http://www.aten.com)

## Documents / Resources

	<p><a href="#">ATEN CS64U/CS64US 4 Port USB KVM Switch</a> [pdf] User Guide  CS64U CS64US 4 Port USB KVM Switch, CS64U, CS64US, 4 Port USB KVM Switch, USB KV  M Switch, KVM Switch, 4 Port Switch, Switch</p>
---	--

## References

- [ATEN - Simply Better Connections | ATEN U.S.A.](#)
- [eService System](#)
- [ATEN - Simply Better Connections | ATEN U.S.A.](#)

- [📄 Downloads | ATEN Corporate Headquarters](#)

Manuals+.