



CS1922M 4-Port USB 3.0
4K DisplayPort MST
KVMP Switch



ATEN CS1922M 4-Port USB 3.0 4K DisplayPort MST KVMP Switch User Guide

[Home](#) » [Aten](#) » ATEN CS1922M 4-Port USB 3.0 4K DisplayPort MST KVMP Switch User Guide 

Contents

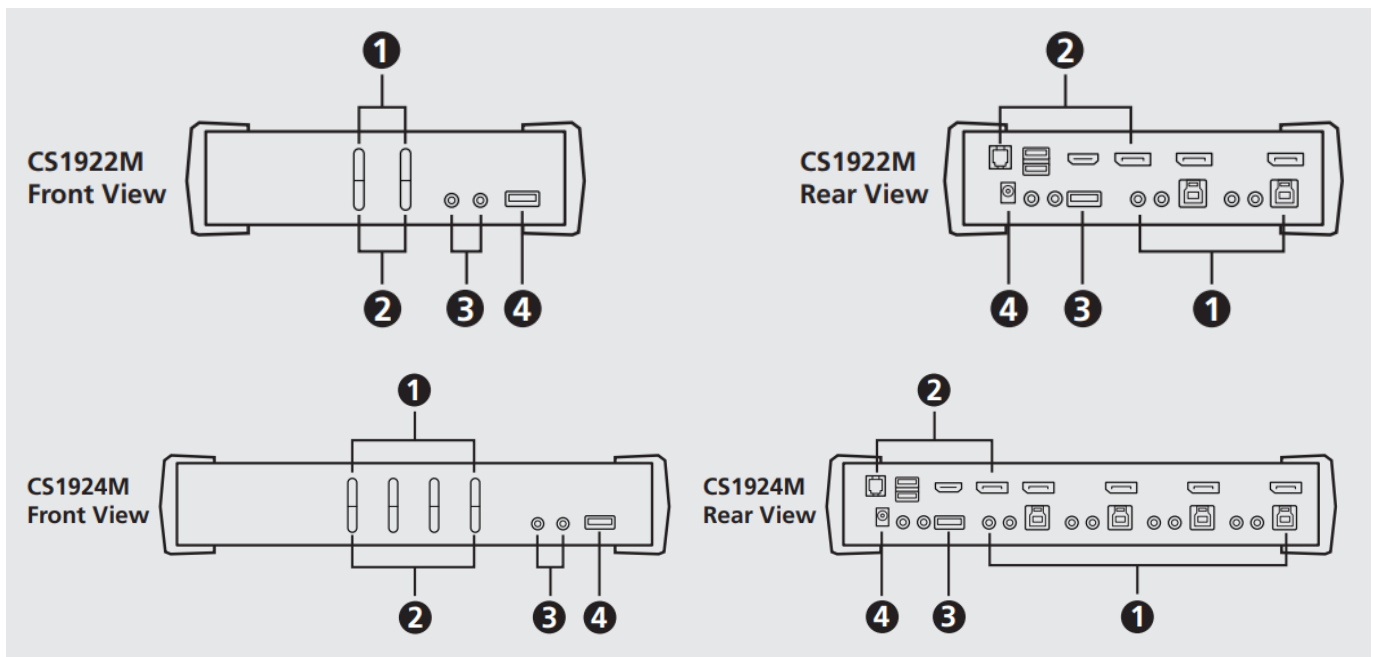
- [1 ATEN CS1922M 4-Port USB 3.0 4K DisplayPort MST KVMP Switch](#)
- [2 Hardware Overview](#)
- [3 Installation](#)
- [4 Package Contents](#)
- [5 Operation](#)
- [6 Installation](#)
- [7 Documents / Resources](#)
 - [7.1 References](#)
- [8 Related Posts](#)



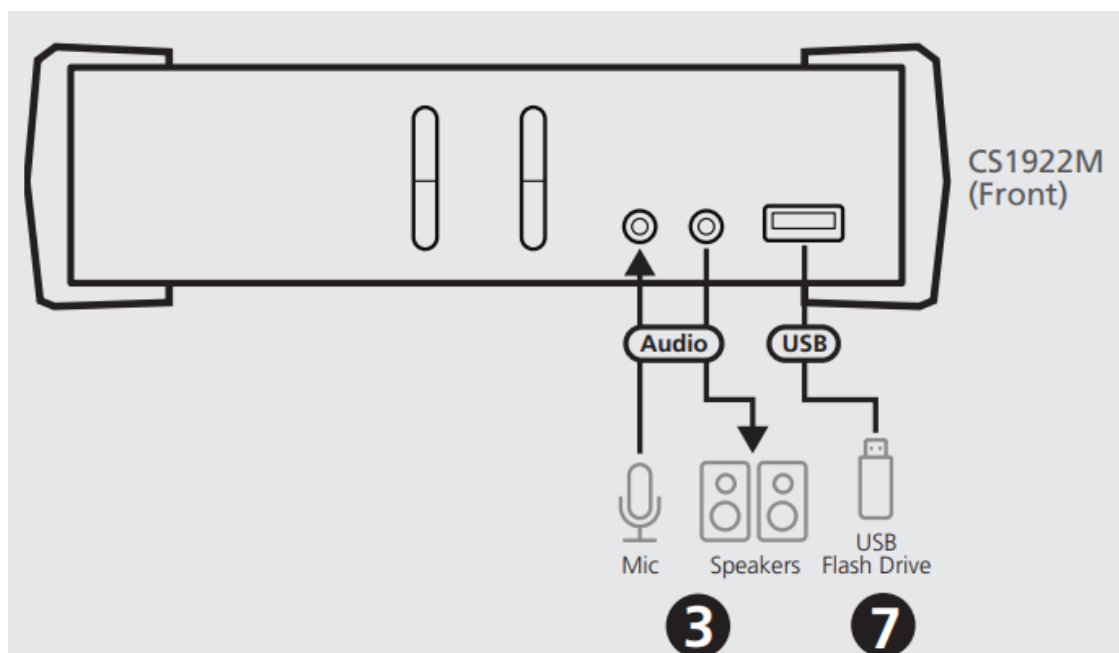
ATEN CS1922M 4-Port USB 3.0 4K DisplayPort MST KVMP Switch

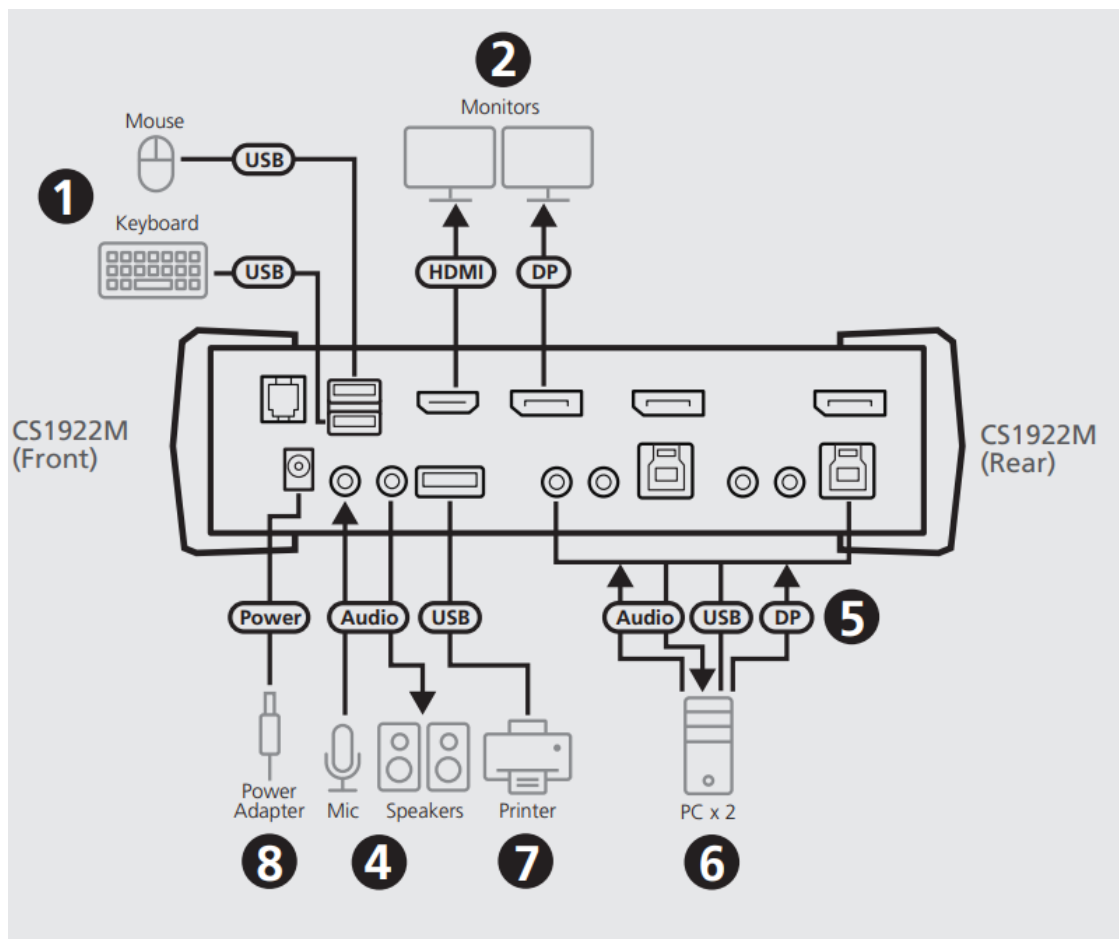


Hardware Overview



Installation





To prevent damage to your installation from power surges or static electricity, all connected devices must be properly grounded.

Package Contents

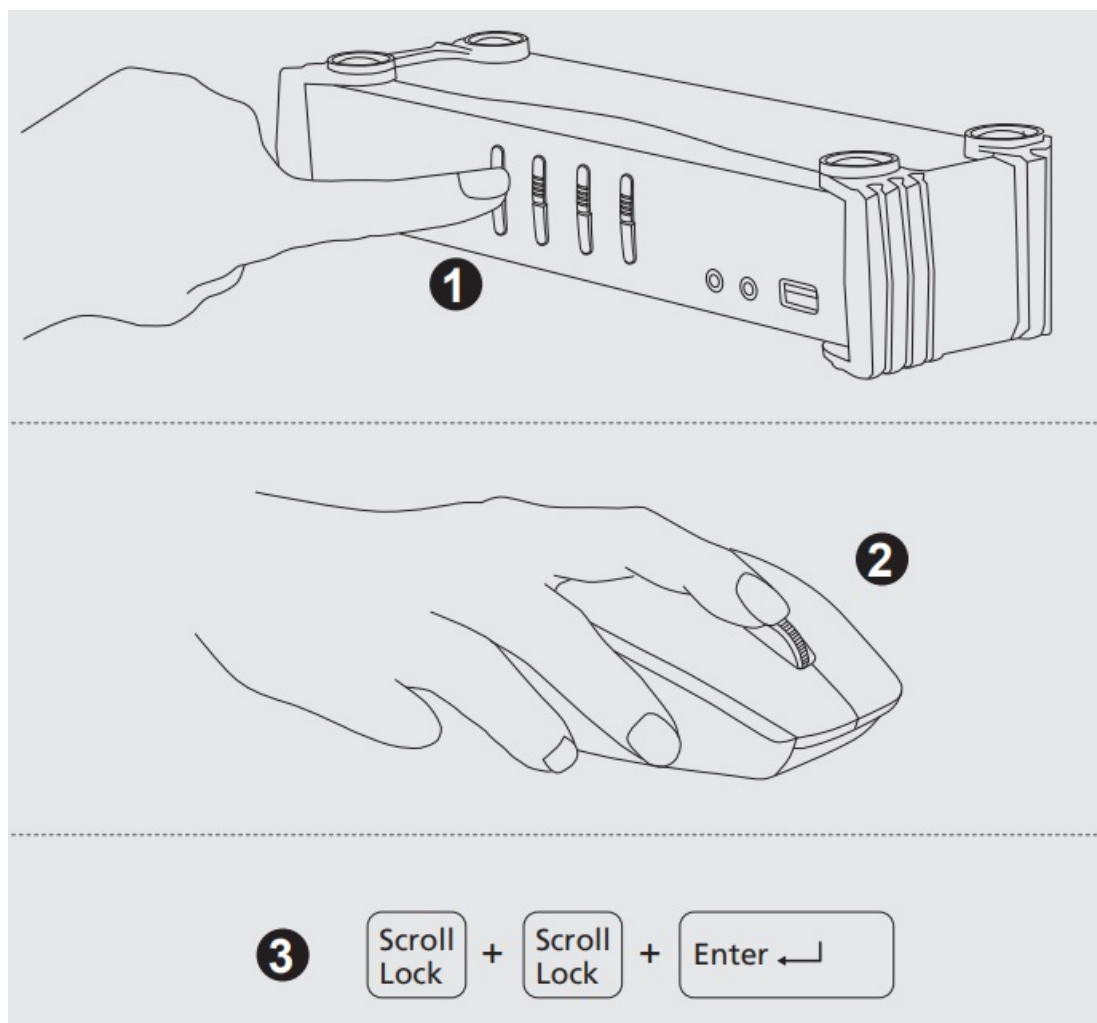
CS1922M

- 1 2-Port USB 3.0 4K DisplayPort
- MST KVMP™ Switch
- 2 DisplayPort cables
- 2 USB 3.0 cables
- 4 audio cables
- 1 power adapter
- 1 user instructions

CS1924M

- 1 4-Port USB 3.0 4K DisplayPort
- MST KVMP™ Switch
- 4 DisplayPort cables
- 4 USB 3.0 cables
- 8 audio cables
- 1 power adapter
- 1 user instructions

Operation



Hardware Overview

Front View

1. port selection pushbuttons
2. port LEDs
3. audio jacks
4. USB 3.0 hub

Rear View

1. KVM ports
2. console ports
3. USB 3.0 hub
4. power jack

Installation

1. Plug the USB keyboard and mouse into the console ports on the rear panel.
2. Plug the monitor into the DisplayPort or the HDMI console port and power on the monitor.

3. Plug the main microphone and speakers into the microphone and speaker audio jacks on the front panel.
4. (Optional) Plug the secondary microphone and speakers into the console audio jacks on the rear panel. The front panel jacks have priority over those on the rear panel.
5. Using the cables provided with this package, plug the DisplayPort, USB 3.0, microphone, and speaker connectors into their corresponding ports in the KVM port section of the switch.
6. At the other ends of the cables, plug the USB 3.0, DisplayPort, microphone, and speaker connectors into their respective ports on the computer
7. (Optional) Plug USB peripherals into the USB Type-A sockets located on the front panel and in the rear panel's console port section.
8. (Optional) Plug an RJ-11 to DB9 cable from the RJ-11 port to a computer's serial port for RS-232 control.
Note: The RJ-11 to DB9 cable is sold separately. Please contact your ATEN dealer for product information.
9. Plug the power adapter (provided with this package) into the switch's power jack and then plug the other end into an AC power source.
10. Power on the computers.

Operation

There are four convenient methods to switch between the computers: Manual – by pressing the port selection pushbuttons on the front panel, Mouse – by clicking the scroll wheel of the mouse, Hotkeys – by entering combinations on the keyboard, and RS-232 commands – for more information on the RS-232 commands, please refer to the user manual.

Manual Switching

For manual port selection: Press a front panel port selection pushbutton once to bring the KVM, audio, and USB focus to the computer attached to the corresponding port.

Mouse Switching

For mouse port selection: Double-click the scroll wheel of your USB mouse to cycle through the ports.

Note

1. Mouse switching is only supported by USB 3-key scroll wheel mice.
2. Mouse switching is disabled by default. See the Hotkey Setting Mode section for how to enable mouse switching.
3. Mouse switching is only supported when Mouse Emulation is enabled.

Hotkey Switching

Cycling Through the Ports

Hotkey	Action
[Scroll Lock] [Scroll Lock] [Enter]	Brings the KVM, USB hub, and audio focus from the current port to the next port on the switch (1 to 2 and 2 to 1 for the CS1922M) (1 to 2, 2 to 3, 3 to 4, and 4 to 1 for the CS1924M). Note: The KVM, USB hub, and audio focus are brought to this port even if they were initially set on different ports.

Going Directly to a Port

Hotkey	Action
[Scroll Lock] [Scroll Lock] [n] [Enter]	Brings the KVM, USB hub, and audio focus to the computer attached to the port corresponding to the specified Port ID. The [n] stands for the computer's Port ID number (1, 2, 3, or 4). Note: The KVM, USB hub, and audio focus are brought to this port even if they were initially set on different ports.

Hotkey Setting Mode (HSM)

Hotkey Setting Mode is used to set functions on the switch. Invoke HSM and then press a key to perform the corresponding function. For more information on the HSM, please refer to the user manual.

To invoke HSM, do the following

1. Press and hold the [Num Lock] key.
2. Press and release the minus [-] key.
3. Release the [Num Lock] key

Support and Documentation

Notice All information, documentation, firmware, software utilities, and specifications contained in this package are subject to change without prior notification by the manufacturer. To reduce the environmental impact of our products, ATEN documentation and software can be found online at <http://www.aten.com/download/>

Technical Support

www.aten.com/support

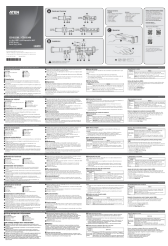
Scan for more information



The Multimedia Interface and the HDMI Logo are trademarks or registered trademarks of HDMI Licensing Administrator, Inc.

Copyright 2024 ATEN® International Co. Ltd.
ATEN and the ATEN logo are registered trademarks of ATEN International Co., Ltd. All rights reserved. All other trademarks are the property of their respective owners. Part No. PAPE-1223-I90G Released: 05/2024

Documents / Resources



[ATEN CS1922M 4-Port USB 3.0 4K DisplayPort MST KVMP Switch](#) [pdf] User Guide
CS1922M, CS1922M 4-Port USB 3.0 4K DisplayPort MST KVMP Switch, 4-Port USB 3.0 4K DisplayPort MST KVMP Switch, USB 3.0 4K DisplayPort MST KVMP Switch, 4K DisplayPort MST KVMP Switch, DisplayPort MST KVMP Switch, MST KVMP Switch, KVMP Switch, Switch

References

- [📄 Downloads | ATEN Corporate Headquarters](#)
- [User Manual](#)

[Manuals+](#), [Privacy Policy](#)

This website is an independent publication and is neither affiliated with nor endorsed by any of the trademark owners. The "Bluetooth®" word mark and logos are registered trademarks owned by Bluetooth SIG, Inc. The "Wi-Fi®" word mark and logos are registered trademarks owned by the Wi-Fi Alliance. Any use of these marks on this website does not imply any affiliation with or endorsement.