



ATEN CS1922 / CS1924 2/4-Port USB3.0 4K DisplayPort KVMPTM Switch User Guide

[Home](#) » [Aten](#) » ATEN CS1922 / CS1924 2/4-Port USB3.0 4K DisplayPort KVMPTM Switch User Guide 

Contents

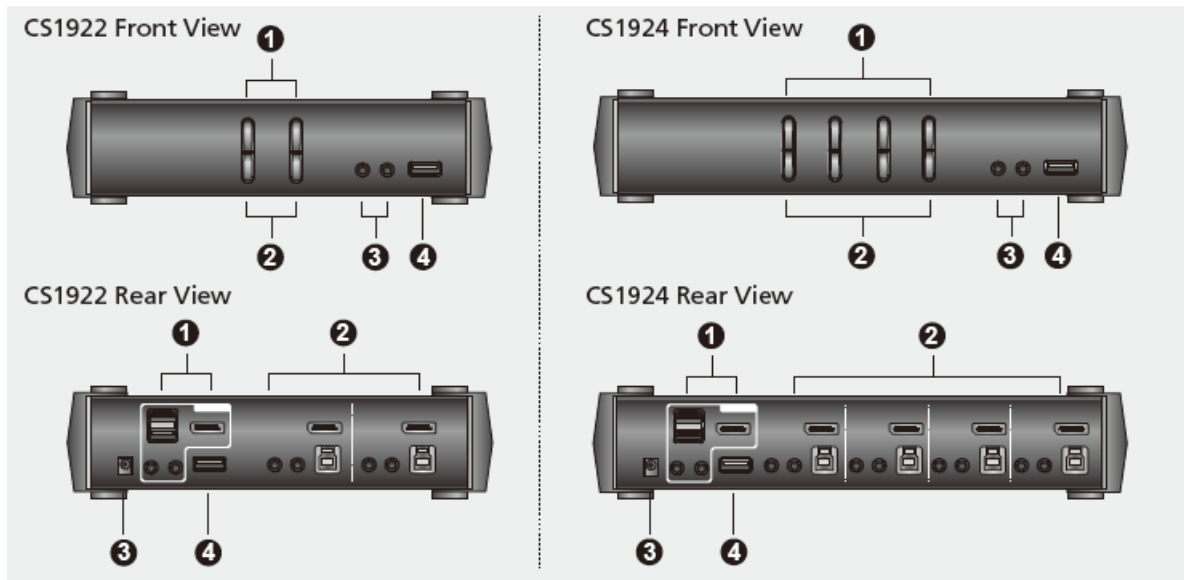
- [1 ATEN CS1922 / CS1924 2/4-Port USB3.0 4K DisplayPort KVMPTM Switch](#)
- [2 Overview](#)
- [3 Installation](#)
- [4 Operation](#)
- [5 package Contents](#)
 - [5.1 Operation](#)
- [6 Hotkey Setting Mode](#)
- [7 HSM Summary Table](#)
- [8 Documents / Resources](#)
 - [8.1 References](#)
- [9 Related Posts](#)



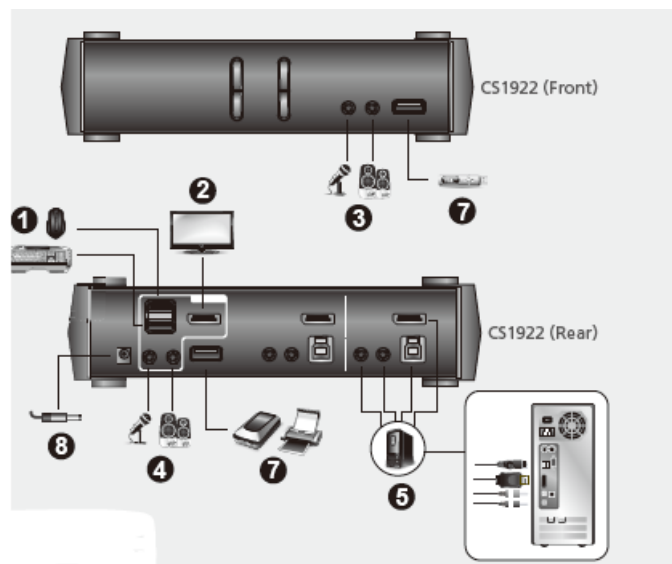
ATEN CS1922 / CS1924 2/4-Port USB3.0 4K DisplayPort KVMPTM Switch



Overview

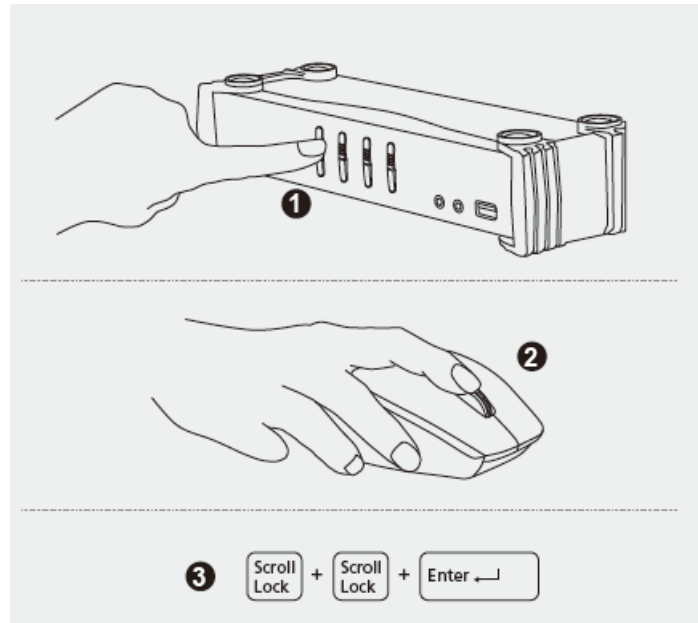


Installation



To prevent damage to your installation from power surges or static electricity, it is important that all connected devices are properly grounded.

Operation



package Contents

CS1922

- 1 2-Port USB 3.0 4K
- DisplayPort KVMP™ Switch
- 2 DisplayPort cables
- 2 USB 3.0 cables
- 4 audio cables
- 1 power adapter
- 1 user instructions

CS1924

- 1 4-Port USB 3.0 4K
- DisplayPort KVMP™ Switch
- 4 DisplayPort cables
- 4 USB 3.0 cables
- 8 audio cables
- 1 power adapter
- 1 user instructions

Front view

1. port selection pushbuttons
2. port LEDs
3. audio jacks
4. USB 3.0 hub

Rear view

1. 1 console ports
2. KVM ports
3. power jack
4. USB 3.0 hub

Hardware

To set up the switch, refer to the diagram above and do the following:

1. Plug the USB keyboard and mouse into the console ports on the rear panel.
2. Plug the monitor into the DisplayPort console port and power on the monitor.
3. Plug the main microphone and speakers into the microphone and speaker audio jacks on the front panel.
These jacks have priority over those on the rear panel.
4. (Optional) Plug the secondary microphone and speakers into the console audio jacks on the rear panel.
5. Using the cables provided with this package, plug the DisplayPort, USB 3.0, microphone, and speaker connectors into their corresponding ports in the KVM port section of the switch.
6. At the other ends of the cables, plug the DisplayPort, USB 3.0, microphone, and speaker connectors into their respective ports on the computer.
7. (Optional) Plug the USB peripherals into the Type-A ports in the USB 3.0 hub sections.
8. Plug the power adapter (provided with this package) into the switch's power jack and then plug the other end into a AC power source.
9. Power on the computers.

Operation

There are three convenient methods to switch between the computers: Manual – by pressing the port selection pushbuttons on the front panel, Mouse – by clicking the scroll wheel of the mouse, and Hotkey – by entering combinations on the keyboard.

1. Manual Switching

For manual port selection: Press a front panel port selection pushbutton once to bring the KVM, audio, and USB focus to the computer attached to the corresponding port.

2. Mouse Switching

For mouse port selection: Double-click the scroll wheel of your USB mouse to cycle through the ports.

Note:

Mouse switching is only supported by USB 3-key scroll wheel mice. Mouse switching is disabled by default. Mouse switching is only supported when Mouse Emulation is enabled. See Hotkey Setting Mode section to enable mouse switching.

3. Hotkey Switching

All port switches from the keyboard begin by pressing the [Scroll Lock] key twice. The tables below describe the actions used to switch ports.

Cycling through Ports

Hotkey	Action
[Scroll Lock] [Scroll Lock] [Enter]	Brings the KVM, USB hub, and audio focus from the current port to the next port on the switch (1 to 2 and 2 to 1 for the CS1922) (1 to 2, 2 to 3, 3 to 4, and 4 to 1 for the CS1924). Note: The KVM, USB hub, and audio focus are brought to this port even if they were initially set on different ports.

Going Directly to a Port

Hotkey	Action
[Scroll Lock] [Scroll Lock] [n] [Enter]	Brings the KVM, USB hub, and audio focus to the computer attached to the port corresponding to the specified Port ID. The [n] stands for the computer's Port ID number (1, 2, 3, or 4). Note: The KVM, USB hub, and audio focus are brought to this port even if they were initially set on different ports.

Hotkey Setting Mode

Hotkey Setting Mode (HSM) is used to set functions on the switch. Invoke HSM and then press a key in the table below to perform the corresponding function. To invoke HSM, do the following:

1. Press and hold the [Num Lock] key.
2. Press and release the [-] key.
3. Release the [Num Lock] key.

HSM Summary Table

Key	Function
[F2]	Enables Mac keyboard emulation.
[F10]	Automatically detects and sets the keyboard operating platform.
[F4]	Lists the current switch settings. After pressing [F4], it opens a text editor and select paste to list the settings.
[F5]	Performs a reset on all USB devices.
[E]	Enables / Disables the Power on Detection feature.
[H]	Toggles between the default ([Num Lock] [-]) and alternate ([Ctrl] [F12]) HSM invocation keys.
[M]	Toggles mouse emulation on and off.
[R] [Enter]	Resets the hotkey settings to their default status.
[u] [p] [g] [r] [a] [d] [e] [Enter]	Invokes Firmware Upgrade Mode.
[W]	Enables / Disables mouse port switching.

Support and Documentation

Notice All information, documentation, fi rmware, software utilities, and specifi cations contained in this package are subject to change without prior notifi cation by the manufacturer. To reduce the environmental impact of our products, ATEN documentation and software can be found online at <http://www.aten.com/download/>

Documents / Resources



[ATEN CS1922 / CS1924 2/4-Port USB3.0 4K DisplayPort KVMPTM Switch](#) [pdf] User Guide
CS1922, CS1924 2, 4-Port DisplayPort

References

- [ATEN - Simply Better Connections | ATEN U.S.A.](#)
- [Downloads | ATEN Corporate Headquarters](#)