



ATEN CS1912 2-4 Port USB 3.0 Display Port KVMP Switch User Guide

[Home](#) » [Aten](#) » ATEN CS1912 2-4 Port USB 3.0 Display Port KVMP Switch User Guide 

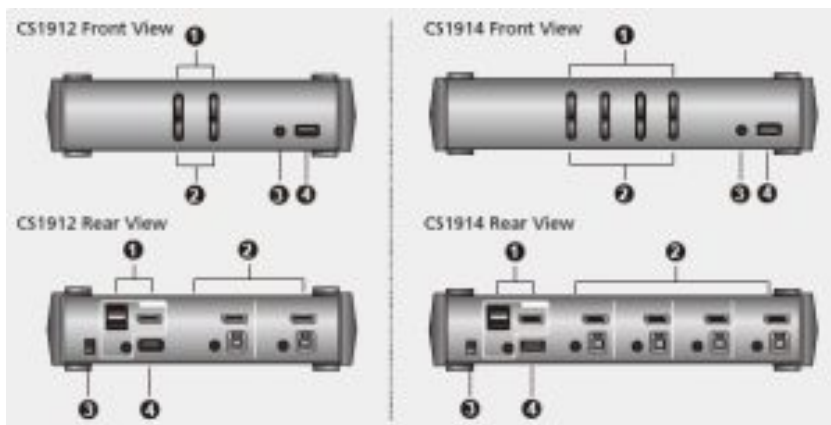
Contents

- [1 ATEN CS1912 2-4 Port USB 3.0 Display Port KVMP Switch User Guide](#)
- [2 A Overview](#)
- [3 B Installation](#)
- [4 C Operation](#)
- [5 Package Contents](#)
- [6 CS1914](#)
 - [6.1 CS1912 / CS1914 2/4-Port USB 3.0 DisplayPort KVMP™ Switch](#)
- [7 A Overview](#)
 - [7.1 Front view](#)
- [8 Rear view](#)
- [9 B Installation](#)
 - [9.1 Hardware](#)
- [10 C Operation](#)
- [11 Cycling through Ports](#)
- [12 Going Directly to a Port](#)
- [13 Hotkey Setting Mode](#)
- [14 HSM Summary Table](#)
- [15 Read More About This Manual & Download PDF:](#)
- [16 Documents / Resources](#)
- [17 Related Posts](#)

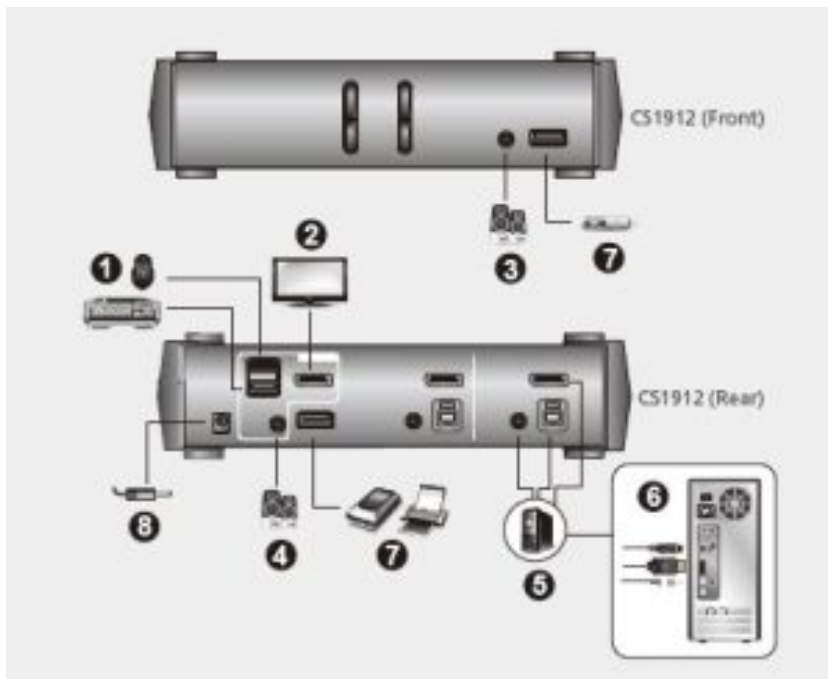
ATEN CS1912 2-4 Port USB 3.0 Display Port KVM Switch User Guide



A Overview

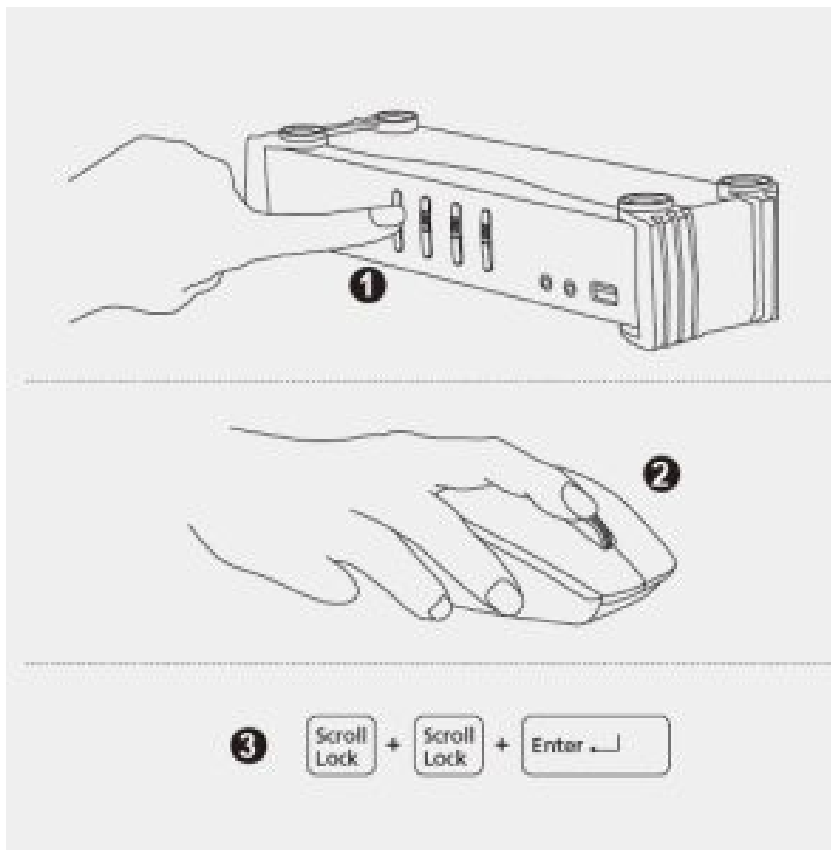


B Installation



To prevent damage to your installation from power surges or static electricity, it is important that all connected devices are properly grounded.

C Operation



Package Contents

CS1912

- 1 2-Port USB 3.0
- DisplayPort KVMP™ Switch
- 2 DisplayPort cables
- 2 USB 3.0 cables
- 2 audio cables
- 1 power adapter
- 1 user instructions

CS1914

- 1 4-Port USB 3.0
- DisplayPort KVMP™ Switch
- 4 DisplayPort cables
- 4 USB 3.0 cables
- 4 audio cables
- 1 power adapter
- 1 user instructions

Support and Documentation Notice

All information, documentation, firmware, software utilities, and specifications contained in this package are subject to change without prior notification by the manufacturer.

To reduce the environmental impact of our products, ATEN documentation and software can be found online at <http://www.aten.com/download>

Technical Support

www.aten.com/support

Scan for more information



CS1912 / CS1914 2/4-Port USB 3.0 DisplayPort KVMP™ Switch

A Overview

Front view

1. port selection pushbuttons
2. port LEDs
3. audio jack
4. USB 3.0 hub

Rear view

1. console ports
2. KVM ports
3. power jack
4. USB 3.0 hub

B Installation

Hardware

To set up the switch, refer to the diagram above, and do the following

1. Plug the USB keyboard and USB mouse into the USB console ports located on the unit's rear panel.
2. Plug the console monitor into the DisplayPort console port located on the unit's rear panel and power on the monitor.
3. Plug the main speakers into the console audio jack located on the unit's front panel.
The speakers plugged into this jack have priority over those in the rear panel.
4. (Optional) Plug your secondary speakers into the console audio jack located on the unit's rear panel.
5. Using the cables provided with this package, plug the DisplayPort, USB 3.0, and audio connectors into their corresponding ports in the KVM port section of the switch.

Note:1 Verify that all the plugs are in the same KVM port section (all in Port 1, all in Port 2, etc.), and each port is marked with an appropriate icon to indicate itself.

2. The USB 3.0 connector is a SuperSpeed USB (SS) that can transfer data up to 5 Gbit/s (625 MB/s) and is thus classified as a USB 3.1 Gen1 device.
6. At the other ends of the cables, plug the DisplayPort, USB 3.0, and audio connectors into their respective ports on the computer.

7. (Optional) Plug your USB peripherals into the Type-A ports in the USB hub section.
8. Plug the power adapter (provided with this package) into the switch's power jack and then plug the other end into a AC power source.
9. Power on the computers.

Note: 1. By default, the switch links to the first computer that is powered on.

2. The total cable length from the PC to monitor (including KVM) cannot exceed 3 meters.

3. Choosing high quality cables helps to ensure that 3840 x 2160 @ 30 Hz resolutions can be reached.

C Operation

There are three convenient methods to switch between the computers: Manual – by pressing the port selection pushbuttons on the front panel; Mouse – by clicking the scroll wheel of the mouse; Hotkey – by entering combinations from the keyboard.

1. Manual Switching

For manual port selection: Press a front panel port selection pushbutton once to bring the KVM, audio and USB focus to the computer attached to the corresponding port.

2. Mouse Switching

For mouse port selection: Double-click the scroll wheel of your USB mouse to cycle through the ports.

Note:

1. Mouse switching is only supported by USB 3-key scroll wheel mice.

2. Mouse switching is disabled by default.*

3. Mouse switching is only supported when Mouse Emulation is enabled. *See Hotkey Setting Mode section to enable mouse switching.

3. Hotkey Switching

All port switches from the keyboard begin by tapping the [Scroll Lock] key twice. The tables below describe the actions used to switch ports.

Cycling through Ports

Hotkey	Action
[Scroll Lock] [Scroll Lock] [Enter]	<p>Brings the KVM, USB hub, and audio focus from the current port to the next port on the switch (1 to 2 and 2 to 1 for the CS1912) (1 to 2, 2 to 3, 3 to 4, and 4 to 1 for the CS1914).</p> <p>Note: The KVM, USB hub, and audio focus are brought to this port even if they were initially set on different ports.</p>

Going Directly to a Port

Hotkey	Action
[Scroll Lock] [Scroll Lock] [n] [Enter]	<p>Brings the KVM, USB hub, and audio focus to the computer attached to the port corresponding to the specified Port ID. The [n] stands for the computer's Port ID number (1, 2, 3, or 4).</p> <p>Note: The KVM, USB hub, and audio focus are brought to this port even if they were initially set on different ports.</p>

Hotkey Setting Mode

Hotkey Setting Mode (HSM) is used to set functions on the switch. Invoke HSM and then press a key in the table below to perform the corresponding function.

To invoke HSM, do the following:

1. Press and hold the [Num Lock] key.
2. Press and release the [-] key.
3. Release the [Num Lock] key.

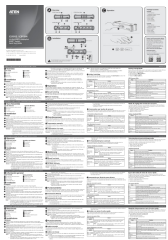
HSM Summary Table

Key	Function
[F2]	Enables Mac keyboard emulation.
[F10]	Automatically detects and sets the keyboard operating platform.
[F4]	Lists the current switch settings. After pressing [F4], it opens a text editor and select paste to list the settings.
[F5]	Performs a reset on all USB devices.
[E]	Enables / Disables the Power on Detection feature.
[H]	Toggles between the default ([Num Lock] [-]) and alternate ([Ctrl] [F12]) HSM invocation keys.

[M]	Toggles mouse emulation on and off.
[R] [Enter]	Resets the hotkey settings to their default status.
[u] [p] [g] [r] [a] [d] [e] [Enter]	Invokes Firmware Upgrade Mode.
[W]	Enables / Disables mouse port switching.

Read More About This Manual & Download PDF:

Documents / Resources

	<p>ATEN CS1912 2-4 Port USB 3.0 Display Port KVMP Switch [pdf] User Guide CS1912, 2-4 Port USB 3.0 Display Port KVMP Switch</p>
---	--