

ATEN CL5800 Dual Rail LCD Console



ATEN CL5800 Dual Rail LCD Console Installation Guide

[Home](#) » [Aten](#) » ATEN CL5800 Dual Rail LCD Console Installation Guide 

Contents

- [1 ATEN CL5800 Dual Rail LCD Console](#)
- [2 Specifications](#)
- [3 Package Contents](#)
- [4 Technical Support](#)
- [5 Hardware Overview](#)
- [6 Installation](#)
- [7 Operation](#)
- [8 Frequently Asked Questions](#)
- [9 Documents / Resources](#)
 - [9.1 References](#)



ATEN CL5800 Dual Rail LCD Console



Specifications

- **Model:** CL5800
- **Type:** Dual Rail LCD Console
- **Part Number:** PAPE-1223-573G
- **Released:** 09/2023

Package Contents

CL5800 Dual Rail LCD PS/2–USB
Console with Standard Rack Mount Kit 1 custom KVM cable

- 1 power cord
- 1 firmware upgrade cable
- 1 extension kit
- 1 user instructions

Support and Documentation Notice

All information, documentation, firmware, software utilities, and specifications contained in this package are subject to change without prior notification by the manufacturer.

To reduce the environmental impact of our products, ATEN documentation and software can be found online at:

<http://www.aten.com/download/>

Technical Support

www.aten.com/support

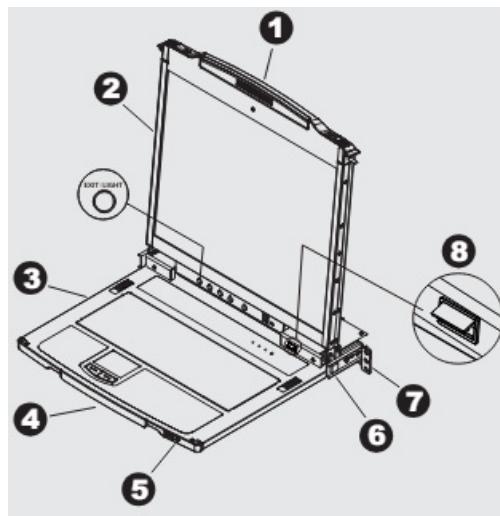
Scan for more information



Hardware Overview

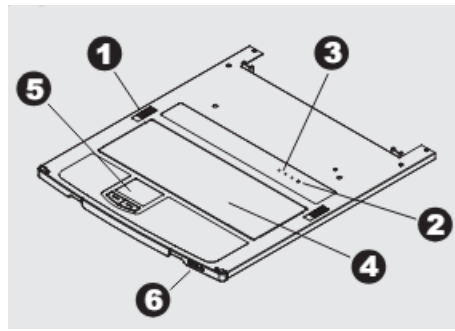
Front View

1. upper handle
2. LCD module
3. keyboard module
4. lower handle
5. power LED
6. LCD release catch
7. rack mounting tabs
8. LED illumination light



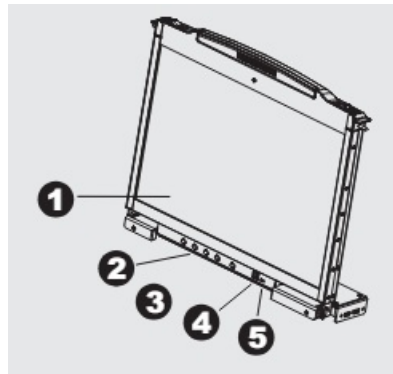
Keyboard Module

1. keyboard release catch
2. reset button
3. lock LEDs
4. keyboard
5. touchpad
6. USB port



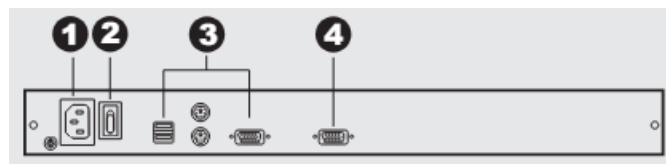
LCD Module

1. LCD
2. LCD controls
3. LCD on / off button
4. firmware upgrade port
5. firmware upgrade switch



Rear View

1. power socket
2. power switch
3. external console section
4. KVM port section



Installation

Standard Rack Mount

A standard rack mount kit is provided with your CL5800. The kit enables the switch to be mounted in a rack with a depth of 52-85cm.

To rack mount the CL5800, do the following:

1. While the first person still holds the CL5800 in place, the second person slides the L brackets into the CL5800's side mounting brackets from the rear until the bracket flanges contact the rack, then screws the L brackets to the rack.
2. After the L brackets have been secured, tighten the front bracket screws.

(Optional) Front-L Bracket Mount

To have a comfortable and safe posture, install the Front-L brackets which provide an extension at the front of the rack to help the unit slide further out thus allowing you to tilt the LCD screen more.

1. Attach the left and right Front-L brackets to the front of the rack, placing screws in the tabs to secure them in place.

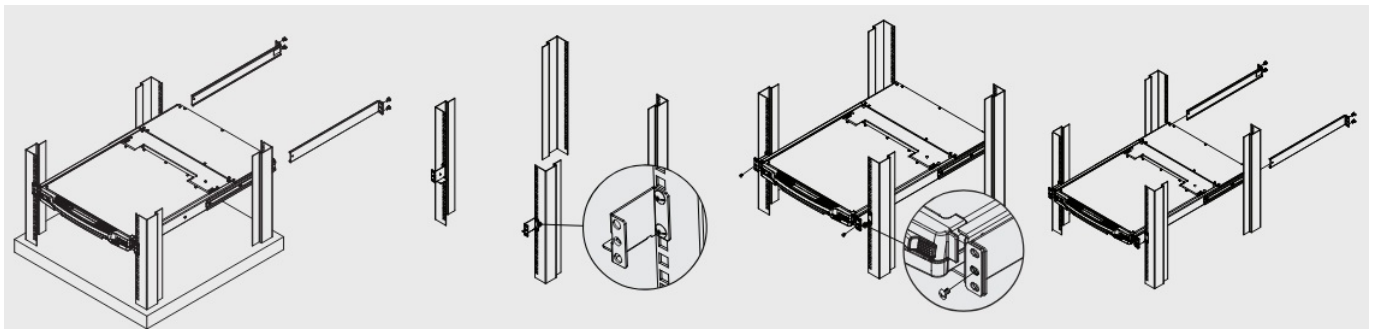
Note: Rack screws are not provided to mount the unit. We recommend that you use two M5 x P0.8 screws on each side.

2. Have one person position the unit in the rack and hold it steady. Have the second person screw the front brackets to the Front-L bracket.

Note: Rack screws are not provided to mount the unit. We recommend that you use one M5 x P0.8 screws on each side.

3. While the first person still holds the unit in place, the second person slides the left and right L-shaped brackets into the unit's side mounting brackets from the rear, installing four screws in the brackets to secure them in place.

4. After the L-shaped brackets are secured, tighten all the screws. Allow at least 5.1 cm on each side for proper ventilation, and at least 12.7 cm at the back for the power cord and cable clearance.



Single Stage Installation

1. Plug the SPHD connector end of a KVM cable into the LCD Console's KVM port.
2. Plug the keyboard, monitor, and mouse connectors of the KVM cable into their respective ports on the Console Section of a KVM switch.
3. If you are installing an external console, plug your keyboard, monitor, and mouse into their respective ports on the Console Section of the LCD Console. The ports are color-coded and marked with an icon for easy identification.
4. Plug the CL5800's power cord into the LCD Console's power socket and a power source.
5. Power up your KVM installation.
6. Turn on the power to LCD Console.

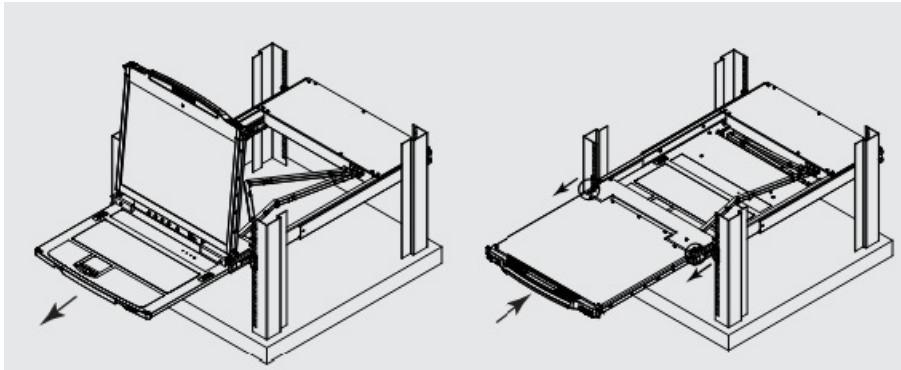
Operation

Opening the Console

1. Pull the release catches to release the console, and pull the top panel a few centimetres toward you.
2. Reach underneath and pull the keyboard module all the way out until it clicks into place.

Closing the Console

1. Pull the release catches located on either side of the keyboard toward you to release the keyboard module, then slide the module slightly in.
2. Rotate the LCD module down, then pull the rear catches to release the LCD module.



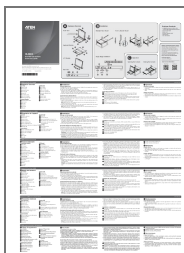
© Copyright 2023 ATEN® International Co. Ltd.

- ATEN and the ATEN logo are registered trademarks of ATEN International Co., Ltd.
- All rights reserved. All other trademarks are the property of their respective owners.
- Part No. PAPE-1223-573G Released: 09/2023

Frequently Asked Questions

- **Q: Where can I find online support and updated documentation?**
 - A: For technical support and updated documentation, visit the manufacturer's website at <http://www.aten.com/support>.

Documents / Resources



[ATEN CL5800 Dual Rail LCD Console](#) [pdf] Installation Guide
CL5800 Dual Rail LCD Console, CL5800, Dual Rail LCD Console, Rail LCD Console, LCD Console, Console

References

- [ATEN - Simply Better Connections | ATEN U.S.A.](#)
- [Downloads | ATEN Corporate Headquarters](#)
- [User Manual](#)

[Manuals+](#), [Privacy Policy](#)

This website is an independent publication and is neither affiliated with nor endorsed by any of the trademark owners. The "Bluetooth®" word mark and logos are registered trademarks owned by Bluetooth SIG, Inc. The "Wi-Fi®" word mark and logos are registered trademarks owned by the Wi-Fi Alliance. Any use of these marks on this website does not imply any affiliation with or endorsement.