



**CL3884NW 4
Port USB
HDMI Multi
View Dual
Rail
WideScreen
LCD KVM
Switch**



ATEN CL3884NW 4 Port USB HDMI Multi View Dual Rail WideScreen LCD KVM Switch User Guide

[Home](#) » [Aten](#) » ATEN CL3884NW 4 Port USB HDMI Multi View Dual Rail WideScreen LCD KVM Switch User Guide 

Contents

- [1 ATEN CL3884NW 4 Port USB HDMI Multi View Dual Rail WideScreen LCD KVM Switch](#)
- [2 Specifications](#)
- [3 FAQs](#)
- [4 Hardware Overview](#)
- [5 Installation](#)
- [6 Operation](#)
- [7 Package Contents](#)
- [8 Documents / Resources](#)
 - [8.1 References](#)



ATEN CL3884NW 4 Port USB HDMI Multi View Dual Rail WideScreen LCD KVM Switch



Specifications

- Product Name: CL3884NW 4-Port USB HDMI Multi-View Dual Rail WideScreen LCD KVM Switch
- Part No.: PAPE-1223-S70G
- Released: 10/2024

FAQs

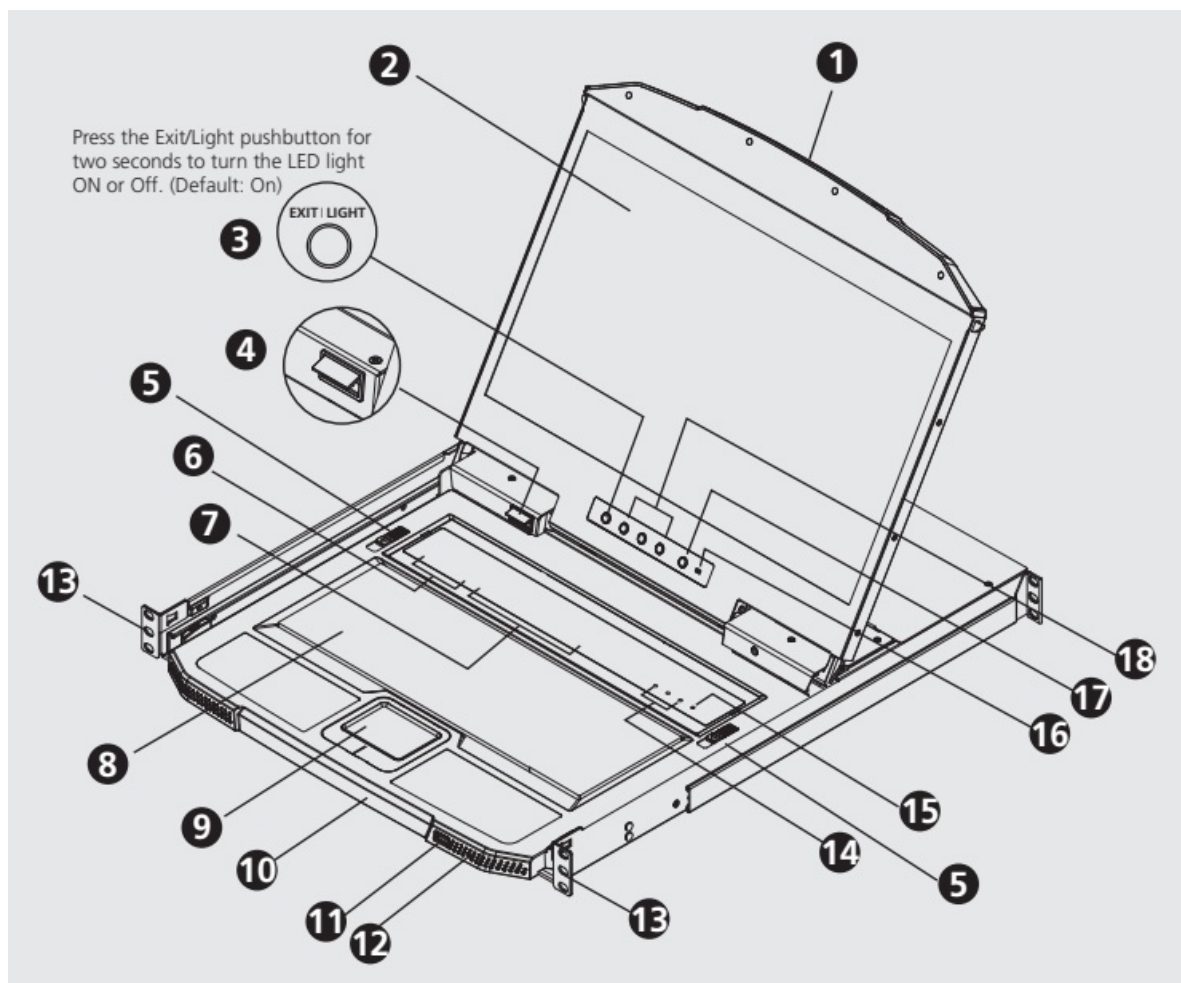
- **Q: How do I turn the LED light on or off?**
 - **A:** Press the Exit/Light pushbutton for two seconds to toggle the LED light on or off.
- **Q: Where can I find online documentation and software updates?**
 - **A:** Visit <http://www.aten.com/download/> for ATEN documentation and software updates.

Hardware Overview

Front View

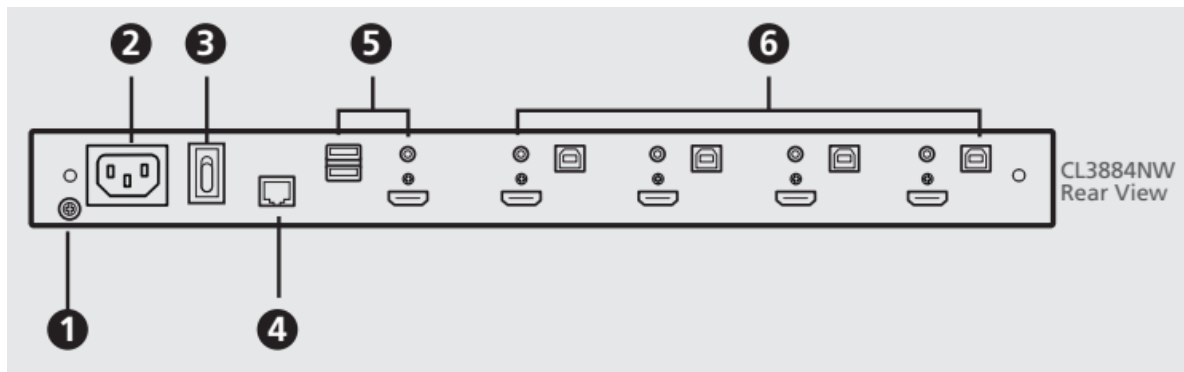
1. upper handle with a release bar
2. LCD module
3. LED illumination light pushbutton
4. LED illumination light
5. keyboard module releases
6. CPU port selection pushbutton / LEDs

7. multi-view mode & LCD / 2nd display mode pushbuttons / LEDs
8. keyboard
9. touchpad
10. lower handle
11. USB peripheral port
12. power LED
13. rack mounting brackets
14. lock LEDs
15. reset button
16. firmware upgrade switch
17. LCD on / off button
18. LCD control buttons



Rear View

1. grounding terminal
2. power socket
3. power switch
4. RS-232 serial port
5. external console section
6. KVM port section

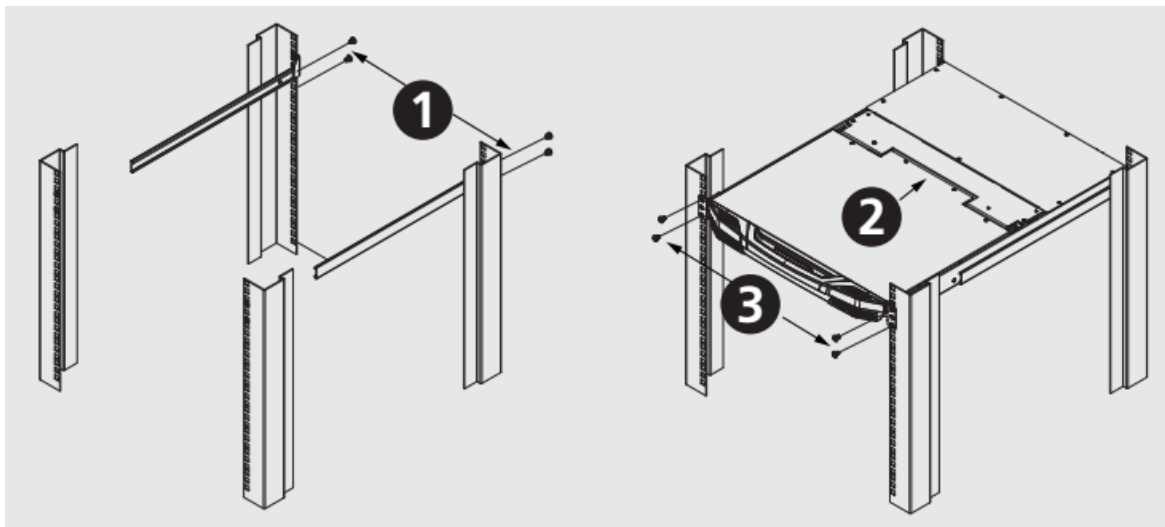


Installation

Standard Rack Mount

A standard rack mounting kit is provided with your CL3884NW and can be mounted in 1U of rack space.

1. Attach the left and right mounting brackets to the back of the rack, installing four screws in the tabs to secure them in place.
2. Two people insert the CL3884NW, by sliding its left and right side bars into the mounting brackets.
3. While one person holds the weight of the CL3884NW, have a second person install four screws in the front tabs to secure the module to the front of the rack.
 - **Note:** Allow at least 5.1 cm on each side for proper ventilation, and at least 12.7 cm at the back for the power cord and cable clearance.



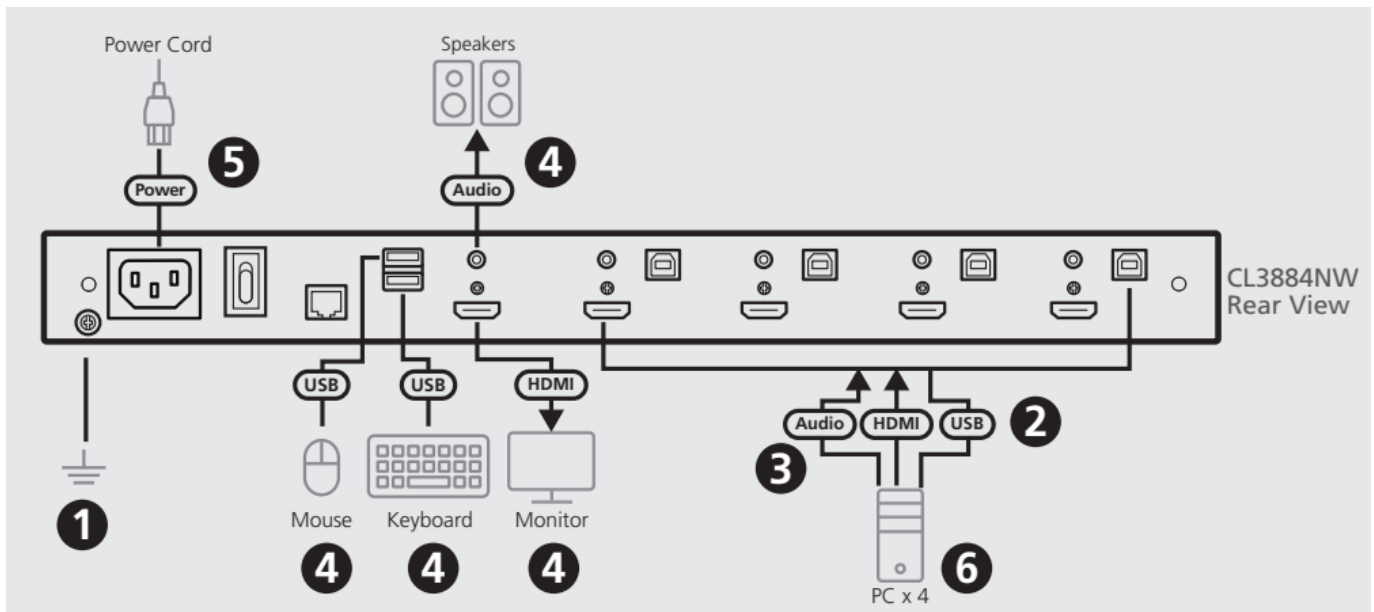
(Optional) Front-L Bracket Mount

To have a comfortable and safe posture, install the Front-L brackets which provide an extension at the front of the rack to help the unit slide further out thus allowing you to tilt the LCD screen more. For more information on how to mount the Front-L brackets, please refer to the Front-L Bracket / Extension Kit Installation Guide.

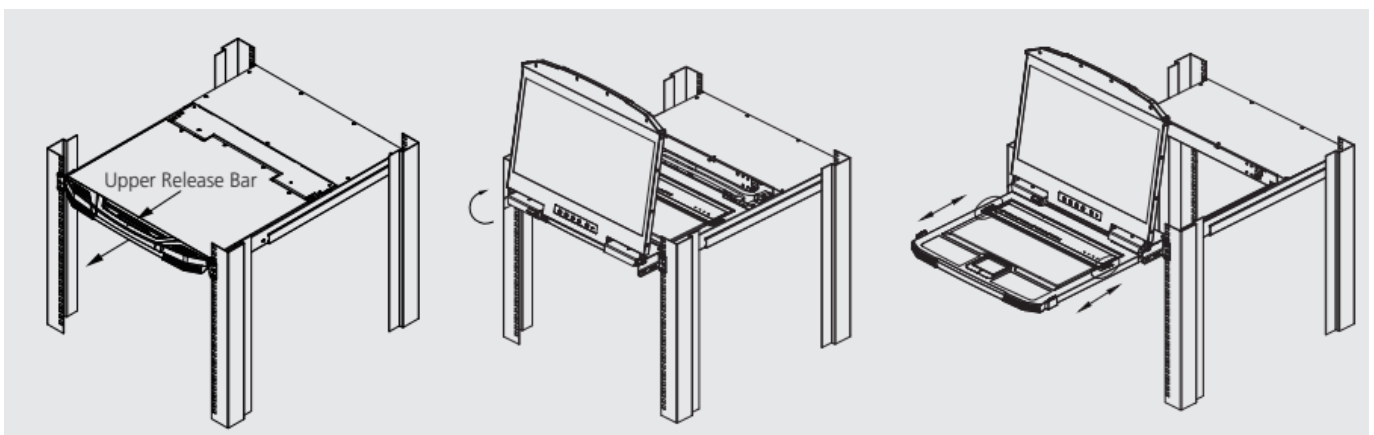
Connecting the Device

1. Ground the CL3884NW by connecting one end of a grounding wire to the grounding terminal and the other end to a suitable grounded object.

- **Note:** Do not omit this step. Proper grounding helps to prevent damage to the unit from power surges or static electricity.
2. Attach your KVM cable(s) to the KVM port section(s) of the CL3884NW.
 3. Attach the other end of your KVM cable(s) to a computer.
 4. (Optional) For external console operation, connect the external console section as needed.
 - Connect the USB Type-A ports from the external console section to a USB keyboard and a USB mouse.
 - Connect the HDMI output port from the external console section to an HDMI-enabled display.
 - Connect the audio jack from the external console section to a set of speakers.
 5. Plug the power cord into the CL3884NW power socket and an AC power source. Turn on the power switch of the CL3884NW.
 6. Power on the computers.



Operation



Opening/Closing the Console

1. Use the Upper Release Bar Handle to pull the LCD Module straight out.
2. Raise the LCD Module back to expose the LCD screen.
3. Use the Bottom Handle to pull the Keyboard Module straight out until it clicks in place. To independently retract the keyboard, slide both Keyboard Module Releases and push the Keyboard Module in.

4. To close the LCD screen, lower the LCD Module until it lies flat and slide it back in.

OSD Functions

OSD functions are used to configure and control the OSD. To access an OSD function:

1. Either click a function key field at the top of the main screen or press Activate OSD Mode function keys (by default, press [Scroll Lock] twice) on the keyboard.
2. In the submenus, make your choice either by double-clicking it, or moving the highlight bar to the choice and pressing [Enter].
3. Press [Esc] to return to the previous menu level.

Hotkey Setting Mode (HSM)

- All hotkey operations begin by invoking Hotkey mode. For more information on the unit's operation, please refer to the user manual.

Package Contents

- 1 CL3884NW LCD KVM with Standard Rack Mounting Kit
- 2 KVM cable sets (USB, HDMI, audio)
- 1 extension kit
- 1 power cord
- 1 user instructions

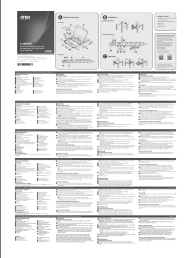
Support and Documentation Notice

- All information, documentation, firmware, software utilities, and specifications contained in this package are subject to change without prior notification by the manufacturer.
- To reduce the environmental impact of our products, ATEN documentation and software can be found online at <http://www.aten.com/download/>.
- **Technical Support** www.aten.com/support.
- **Scan for more information**





- The terms HDMI, HDMI High-Definition Multimedia Interface, and the HDMI Logo are trademarks or registered trademarks of HDMI Licensing Administrator, Inc.

Documents / Resources

| | |
|---|---|
|  | <p>ATEN CL3884NW 4 Port USB HDMI Multi View Dual Rail WideScreen LCD KVM Switch [pdf]] User Guide</p> <p>CL3884NW 4 Port USB HDMI Multi View Dual Rail WideScreen LCD KVM Switch, CL3884NW, 4 Port USB HDMI Multi View Dual Rail WideScreen LCD KVM Switch, Multi View Dual Rail WideScreen LCD KVM Switch, Rail WideScreen LCD KVM Switch, LCD KVM Switch, KVM Switch</p> |
|---|---|

References

-  [ATEN - Simply Better Connections | ATEN U.S.A.](#)
-  [Downloads | ATEN Corporate Headquarters](#)
- [User Manual](#)

[Manuals+](#), [Privacy Policy](#)

This website is an independent publication and is neither affiliated with nor endorsed by any of the trademark owners. The "Bluetooth®" word mark and logos are registered trademarks owned by Bluetooth SIG, Inc. The "Wi-Fi®" word mark and logos are registered trademarks owned by the Wi-Fi Alliance. Any use of these marks on this website does not imply any affiliation with or endorsement.