



ATEN CCKM KVM over IP Matrix Manager User Guide

[Home](#) » [Aten](#) » ATEN CCKM KVM over IP Matrix Manager User Guide 



CCKM KVM over IP Matrix Manager
User Guide



CCKM
KVM over IP Matrix Manager
Quick Start Guide
© Copyright 2022 ATEN® International Co. Ltd.

Contents

- 1 CCKM KVM over IP Matrix Manager
- 2 Package Contents
- 3 Installation
- 4 License Activation
- 5 Adding KE & KX Series Devices
- 6 Documents / Resources
 - 6.1 References

CCKM KVM over IP Matrix Manager

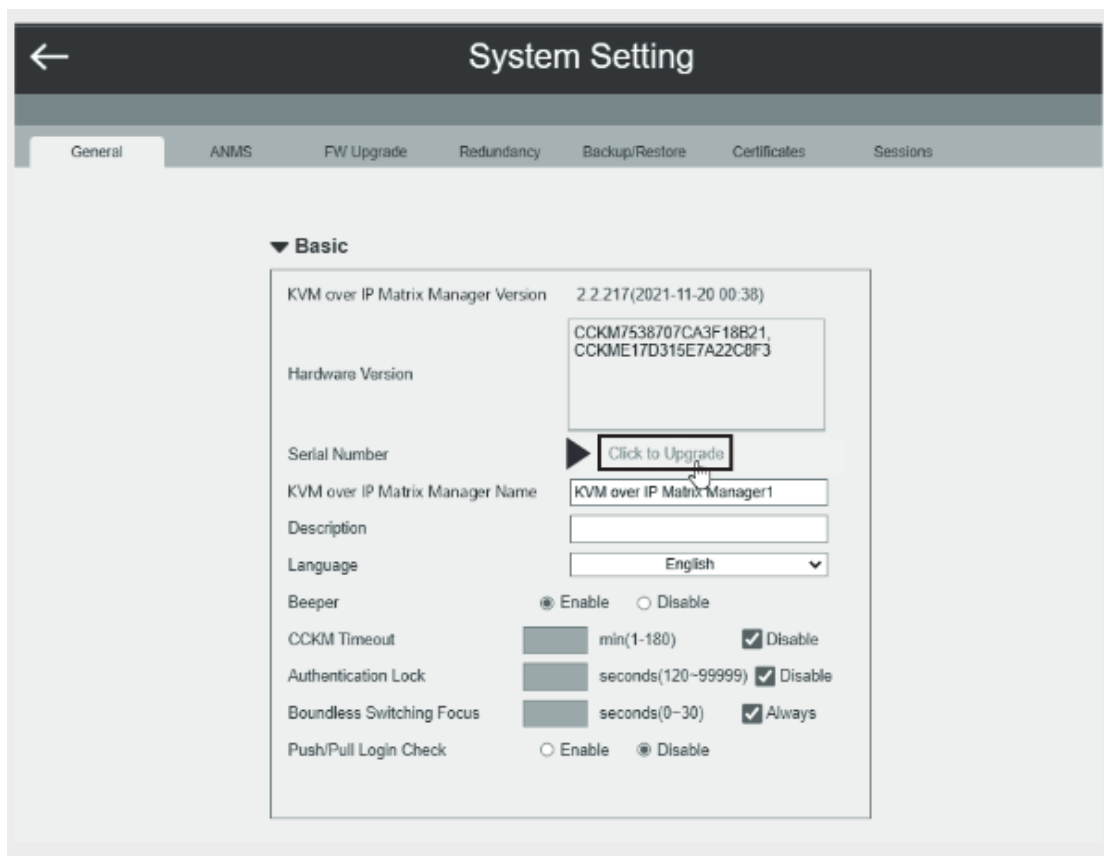
ATEN and the ATEN logo are registered trademarks of ATEN International Co., Ltd.
All rights reserved. All other trademarks are the property of their respective owners.
Released: 04/2022

A .Download

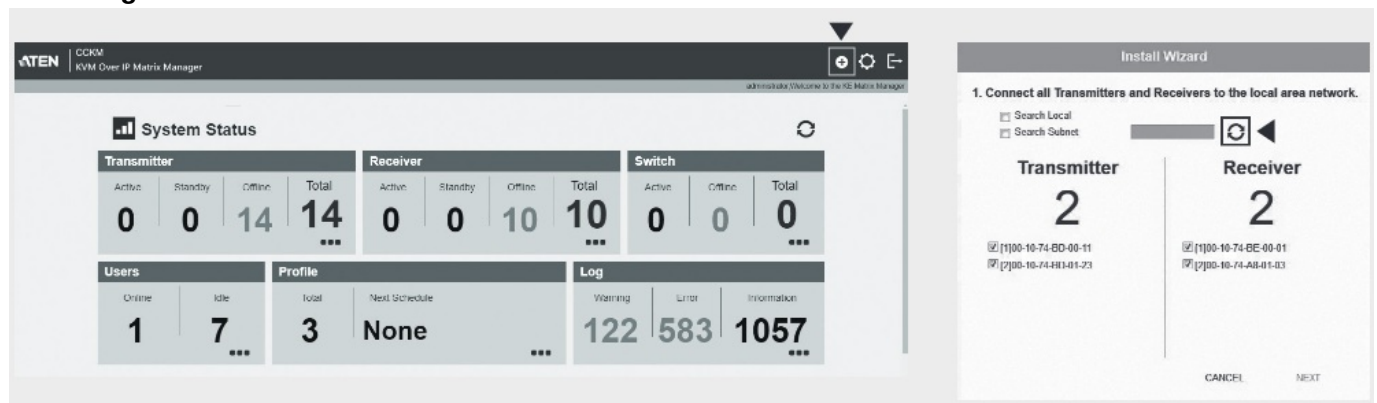
The screenshot displays the ATEN Support Center website. The header includes the ATEN logo, navigation links (Home, Log in), and a language dropdown set to English. A large banner reads "Welcome to ATEN Support Center" with a search bar for FAQs. Below the banner, a "General Notice" from 2022/05/23 is visible. The main content area is titled "Product Registration" and features an "Insert" button, a text prompt to register a serial number, and a "Total Software Download" button. A table lists registered products with columns for Serial Number, Model, Date of Purchase, Invoice / Shipping Document, Standard Warranty Due Date, and Action. The table contains one entry for model KE6000ANT. A sidebar on the right contains links for Account (Membership Function, User Profile, My Download, Sign Out) and Support Center (Technical Support, FAQ Search, Troubleshooting, Ask Question, ATEN Hotkey, Product & Device Compatibility List, Downloads, and Product Registration).

Serial Number	Model	Date of Purchase	Invoice / Shipping Document	Standard Warranty Due Date	Action
ATKB-041-0006	KE6000ANT	2020/12/02		2022/12/01	

B . License Activation



C. Adding KE & KX Series Devices



Package Contents

- 1 CCKM USB License Key (inapplicable to Virtual License)
- 1 user instructions

Support and Documentation Notice

All information, documentation, firmware, software utilities, and specifications contained in this package are subject to change without prior notification by the manufacturer.

To reduce the environmental impact of our products, ATEN documentation and software can be found online at

<http://www.aten.com/download/>

Technical Support www.aten.com/support

Scan for more information

<div data-bbox="363 85 587 362"> <p>ATEN Website</p>  </div>	<div data-bbox="1061 85 1257 362"> <p>User Manual</p>  </div>
http://www.aten.com/products/productItem.php?model_no=cckm	http://www.aten.com/ext_libraries/manuals.php?n=cckm

Installation

To install the CCKM, do the following:

1. On ATEN website's Download section, search for CCKM and click Download the latest version under Software & Drivers. Then log in (by Create New or Log In).
2. Click Insert under Product Registration and fill in the necessary information to register the KE & KX Series device(s) you have purchased. A
3. After registration, click Trial Software Download A , download and unzip the version of the CCKM software based on your OS system.
4. Insert the CCKM USB License Key purchased. If you're using the Virtual License, skip this step, and see License Activation after the installation is complete.
5. Execute the installation file and follow the onscreen instructions to install.

Note: In the License Agreement screen, thoroughly read through the details of the software license agreement before proceeding.
6. When the installation is complete, the Installation Complete message appears.
7. Run the CCKM.

License Activation

Without a license, the CCKM can only configure up to 8 KE Series devices. To activate the CCKM Virtual License Key, do the following:

1. Log into the CCKM web interface (<https://<CCKM-Server-IP>:8443>), and click System Settings.
2. From the General tab, click Click to Upgrade to browse for and activate your purchased license. B
3. Once upgraded, you can configure more than 8 KE & KX Series devices to be managed by the CCKM over a network.

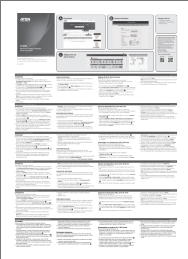
Adding KE & KX Series Devices

Before you start, make sure:

- KE & KX Series devices are installed within the same LAN
 - Only pair KE transmitter to KE receiver or KX transmitter to KX receiver because KE & KX Series devices are not compatible.
1. On the CCKM main page, click the Install Wizard button. C
 2. Select Search Local or Search Subnet and enter a subnet IP, to respectively search for KE & KX Transmitters / Receivers on the local network or for their subnet. Click the Refresh button to start searching. C
 3. Under the total numbers of transmitters and receivers found, check the devices you want to add, and click Next.
 4. Optionally reassign the IP addresses of the KE & KX Series devices and/or rename them, then click Next.
 5. Confirm the settings and access permissions of the transmitters, and likewise for receivers, then click Done.
Note: For details on Transmitter/Receiver Permissions, please refer to the KE & KX Series & CCKM User Manual.
 6. Once successfully added, you will be able to view and monitor the statuses of the KE & KX Series devices on the CCKM main page.



Documents / Resources

	<p>ATEN CCKM KVM over IP Matrix Manager [pdf] User Guide KE KX Series Devices, CCKM, CCKM KVM over IP Matrix Manager, KVM over IP Matrix Manager, over IP Matrix Manager, IP Matrix Manager, Matrix Manager, Manager</p>
---	--

References

- [ATEN - Simply Better Connections | ATEN U.S.A.](#)
- [Downloads | ATEN Corporate Headquarters](#)