

ATDEC AWM Single Wall Bracket Installation Guide

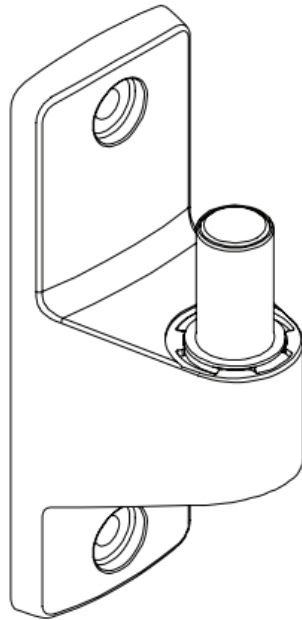
[Home](#) » [ATDEC](#) » ATDEC AWM Single Wall Bracket Installation Guide 

Contents

- [1 ATDEC AWM Single Wall Bracket](#)
- [2 Product Information](#)
- [3 Product Usage Instructions](#)
- [4 COMPONENT CHECKLIST](#)
- [5 REQUIRED TOOLS](#)
- [6 WEIGHT RANGE](#)
- [7 IMPORTANT INFORMATION](#)
- [8 Mount the Wall Bracket to the Wall](#)
- [9 \(Optional\) Set arm rotation to 360°](#)
- [10 Fit arm to Single Wall Bracket](#)
- [11 Documents / Resources](#)
- [12 Related Posts](#)

ATDEC

ATDEC AWM Single Wall Bracket



Product Information

- The AWM Single Wall Bracket (AWM-W) is a modular mounting solution for monitors weighing between 0-18kg (0-40lb). It is designed to securely mount monitors to walls, offering flexibility and adjustability.
- The package includes the following components:
 - A Single Wall Bracket (x1)
 - M8x70mm Screws (x2)
 - Washers (x2)
 - 6mm Hex Key (x1)
- The wall fasteners provided are suitable for timber stud wall constructions. For other wall constructions, such as masonry, alternative suitable wall fasteners should be sourced by the installer. The wall fasteners must have a pull-out (tension) force rating of at least 100kg (1000N) per fastener to ensure the full capacity of the product is achieved.
- It is important to consult a professional installer to ensure the structural capacity of the wall can support the weight of all equipment being mounted. Caution should be exercised when drilling holes in walls to avoid electrical cables, water pipes, and gas pipes.
- Note that curved monitors, deep devices, VESA mounted accessories, and offset VESA locations can exert additional leverage that may exceed the capacity of the mount. For further information, please contact Atdec.

Product Usage Instructions

Mount the Wall Bracket to the Wall

1. Using the Single Wall Bracket as a template, mark the two fixing hole positions for drilling. Ensure that the wall bracket is level by verifying with a spirit level tool along the side edge of the bracket.
2. For timber stud walls, use a stud finder to position the mounting fasteners in the center of the studs.
3. Drill holes at the marked positions.

Prepare the Wall Bracket

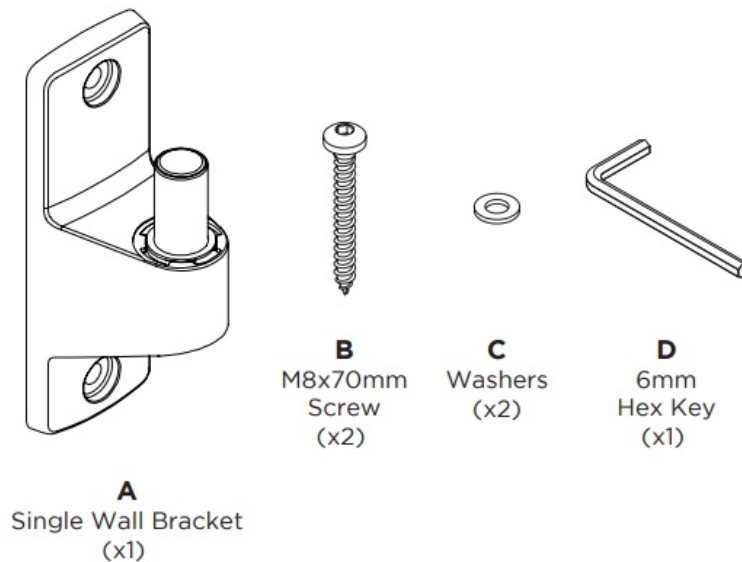
1. Remove the plastic sleeve from the wall bracket.
2. Remove the rotation ring.
3. Choose the desired position for the rotation ring and place it accordingly. Replace the plastic sleeve.
4. Ensure that the plastic sleeve is fitted securely on the wall bracket.

Fit the Arm to the Single Wall Bracket

1. Push the arm onto the wall bracket shaft, ensuring that the grub screw is retracted.
2. Make sure the arm is fully pushed onto the bracket.
3. Tighten the set screw using the supplied 4mm Hex Key to secure the arm in place.
4. Check that the joint rotation is smooth after tightening.

Please refer to the provided diagrams in the user manual for visual assistance during installation.

COMPONENT CHECKLIST



REQUIRED TOOLS

- Power drill
- Suitable drill bit
- Driver bit for selected wall fasteners
- Stud finder
- Spirit level

WEIGHT RANGE

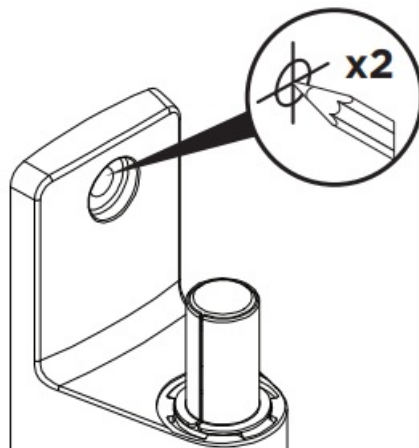
- 0 – 18kg (0 – 40lb)
- Monitor weight should be within the weight range of all modular elements that make up the complete monitor mounting solution.

IMPORTANT INFORMATION

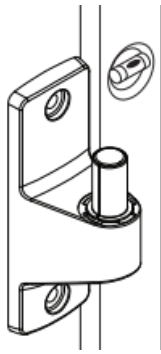
- Please ensure this product is installed as per these installation instructions.
- Do not remove or throw away the plastic sleeve on wall bracket.
- The manufacturer accepts no responsibility for incorrect installation.
- Failure to install this product correctly may cause serious injury/death during or following installation.
- This product is not suitable for outdoor use.
- Do not use this product for mobile applications.
- This product should only be installed by professional installers of good mechanical aptitude, who have experience with building construction, and fully understand these instructions and the consequences of incorrect installation.
- Supplied wall fasteners are for timber stud wall constructions only. For other wall constructions, such as masonry, alternative suitable wall fasteners should be sourced by the installer.
- To safely achieve the full capacity of this product, wall fasteners must have a pull-out (tension) force rating of at least 100kg (1000N) per fastener. This rating must include a safety factor.
- Professional installer to ensure adequate structural capacity of wall (including appropriate safety factor) to support total weight of all equipment being mounted.
- Drilling into electrical wires can cause death – use appropriate equipment and caution when drilling holes in walls to avoid electrical cables, water pipes and gas pipes. Do not drill into structures unless you have established it's safe to do so.
- Curved monitors, deep devices (such as all-in-one PCs), VESA mounted accessories (such as mini PC brackets and mounts), and offset VESA locations exert additional leverage that can exceed the capacity of the mount even though the monitor weight may be within the stated range. Please contact Atdec if you would like further information.

Mount the Wall Bracket to the Wall

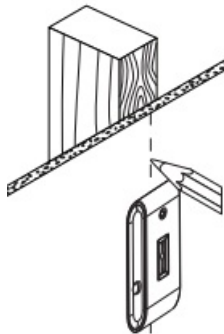
- Using the Single Wall Bracket as a template, mark the two fixing hole positions for drilling.



- **NOTE:** Wall bracket must be level. Verify using a quality spirit level tool positioned along the side edge of the wall bracket.

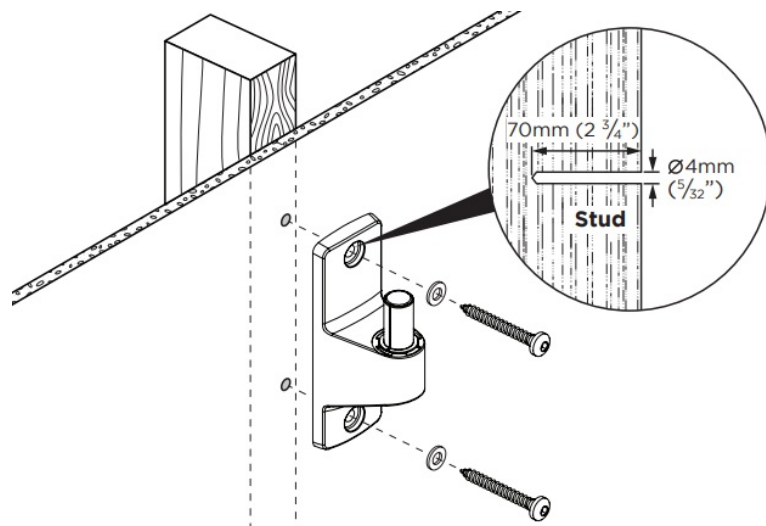


- **NOTE:** On a timber stud wall, use a good quality stud finder to position mounting fasteners in the centre of studs.



• **NOTE:**

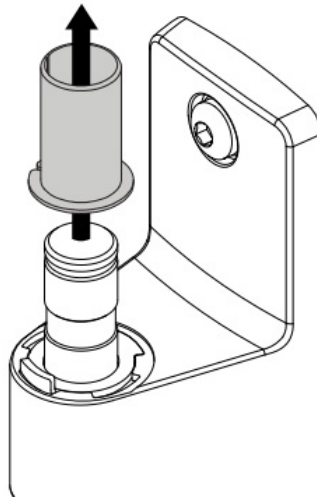
- Alternative wall constructions, such as masonry, will require different fasteners than what is supplied with the product.
- Selection and sourcing of alternative wall mounting fasteners is the responsibility of the installer. See 'Important Information' above for more details.



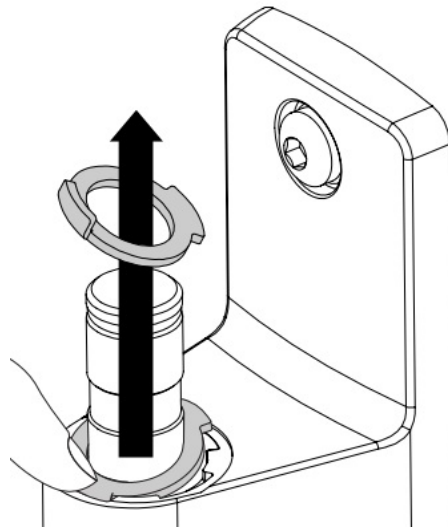
(Optional) Set arm rotation to 360°

Note rotation is set to 180° by default. This will protect the wall by preventing the arm swinging into it.

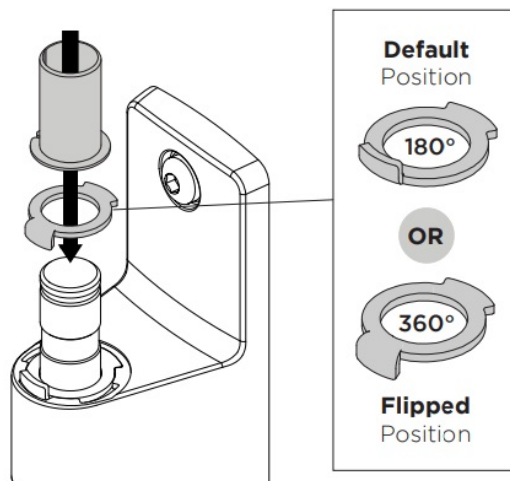
1. Remove plastic sleeve from wall bracket



2. Remove rotation ring.

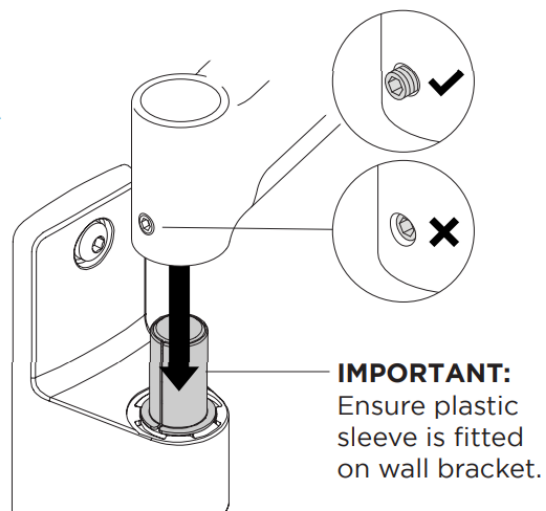


3. Place rotation ring in desired position and replace plastic sleeve.

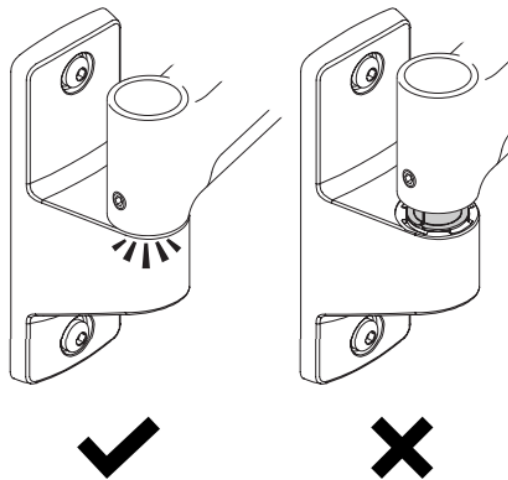


Fit arm to Single Wall Bracket

1. Push arm onto the wall bracket shaft. Ensure grub screw is retracted before doing so.



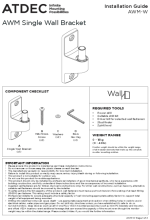
2. Ensure arm is fully pushed onto bracket.



3. Tighten the set screw with 4mm Hex Key (supplied with arm) to secure the arm in place.

NOTE: Check the joint rotation is smooth after tightening.





[ATDEC AWM Single Wall Bracket](#) [pdf] Installation Guide
AWM Single Wall Bracket, AWM, Single Wall Bracket, Wall Bracket