



# AT T TL92278 DECT 6.0 Cordless Answering System User Manual

[Home](#) » [AT&T](#) » AT T TL92278 DECT 6.0 Cordless Answering System User Manual 

## AT T TL92278 DECT 6.0 Cordless Answering System User Manual



### **Congratulations**

on your purchase of this AT&T product. Before using this AT&T product, please read the Important safety information on pages XX-XX of this manual. Please thoroughly read this user's manual for all the feature operations and troubleshooting information necessary to install and operate your new AT&T product. You can also

visit our website at [www.telephones.att.com](http://www.telephones.att.com) or call 1 (800) 222-3111. In Canada, dial 1 (866) 288-4268.

Both the model and serial number of your AT&T product can be found on the bottom of the telephone base.

Save your sales receipt and original packaging in case it is necessary to return your telephone for warranty service.



The ENERGY STARR program ([www.energystar.gov](http://www.energystar.gov)) recognizes and encourages the use of products that save energy and help protect our environment. We are proud to mark this product with the ENERGY STARR label indicating it meets the latest energy efficiency guidelines

© 2008 Advanced American Telephones. All rights reserved.

AT&T and the AT&T logo are trademarks of AT&T Intellectual Property II, L.P. d/b/a AT&T Intellectual Property licensed to Advanced American Telephones. Printed in china

## Contents

- 1 Before you begin
- 2 Parts checklist
- 3 Getting started
- 4 Handset status icons
- 5 Installation setup
- 6 Telephone base installation
- 7 Charger installation
- 8 Battery installation & charging
- 9 Installation options
- 10 Documents / Resources
  - 10.1 References
- 11 Related Posts

## Before you begin

you must install and charge the battery, see page XX for Battery installation instructions.

Please read and follow these instructions carefully:

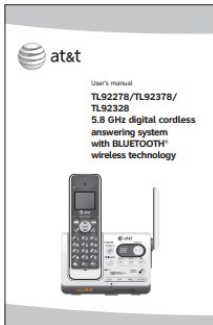
- Use only the supplied rechargeable battery or replacement battery.
- Observe the proper polarity orientation between the battery and handset during battery installation.
- Do not dispose of the battery in a fire. Check with local codes for special disposal instructions.
- Do not open or mutilate the battery. Released electrolyte is corrosive and may cause damage to the eyes or skin. It may be toxic if swallowed.
- Exercise care in handling batteries in order not to create a short circuit with conductive materials such as rings, bracelets, and keys. The battery or conductor may overheat and cause harm.
- Charge the supplied battery or replacement battery with this product only in accordance with the instructions and limitations specified in this manual.

- Do not disassemble your telephone. There are no userserviceable parts inside. Refer to qualified service personnel for servicing.

## Parts checklist

Your telephone contains the following items.

- User's manual



- Quick start guide



- Cordless handset  
(2 for TL92278)  
(3 for TL92378/ TL92328)



- Telephone base



- Charger for cordless handset with power adapter installed

(1 for TL92278) (2 for TL92378/ TL92328)



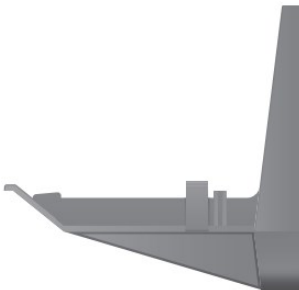
- Battery for cordless handset  
(2 for TL92278)  
(3 for TL92378/ TL92328)



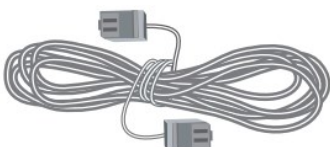
- Battery compartment cover  
(2 for TL92278)  
(3 for TL92378/ TL92328)



- Wall mount bracket

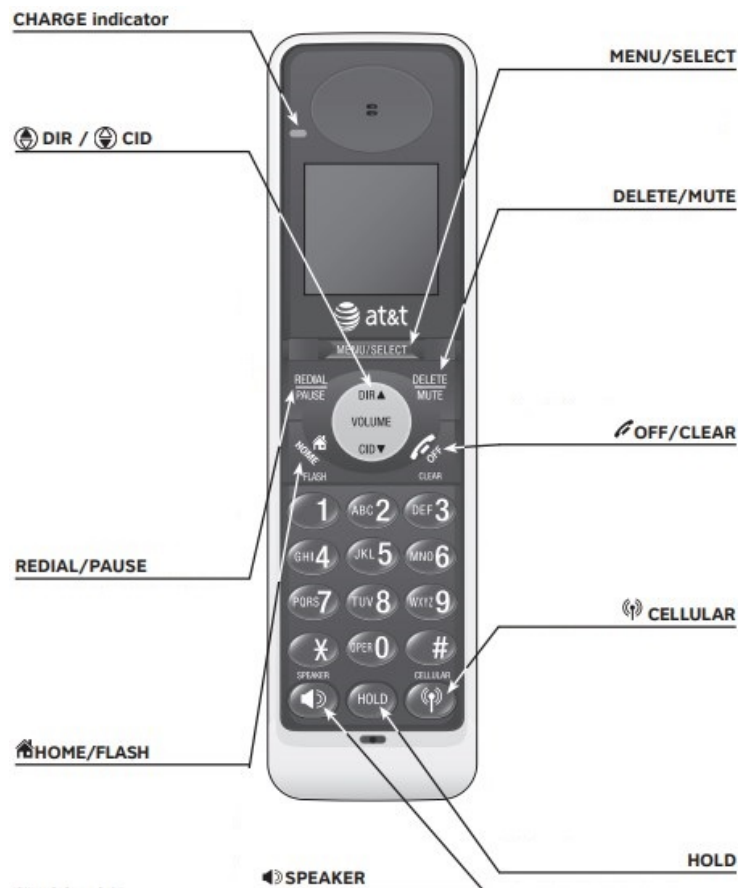


- Telephone line cord



## Getting started

## Quick reference guide – handset



### CHARGE indicator

On when the handset is charging in the telephone base or charger

### DIR / CID

Press DIR to display directory entries (page 34).

Press to scroll up while in menus.

While entering names or numbers, press to move the cursor to the right.

Press to increase the listening volume when on a call.

Press CID to display caller ID history (page 40).

Press to scroll down while in menus.

While entering names or numbers, press to move the cursor to the left.

Press to decrease the listening volume when on a call.

### REDIAL/PAUSE

Press to view redial memory (page 22).

While entering numbers, press and hold to insert a dialing pause (page 32).

### HOME/FLASH

Press to make or answer a HOME call.

Flashes rapidly when there is an incoming HOME call.

Flashes slowly when a HOME call is on hold.

During a HOME call, press to receive an incoming call if call waiting is activated (page 57).

### SPEAKER

Press to turn on the handset speakerphone.

Press again to resume normal handset use (page 21)

## **MENU/SELECT**

Press to display the menu.

While in the menu, press to select an item or save an entry or setting.

## **DELETE/MUTE**

During a call, press to mute microphone (page 25).

While reviewing the caller ID history, press to delete an individual entry, or press and hold to clear the caller ID history (page 40).

While predialing, press to delete digits (page 21).

## **OFF/CLEAR**

During a HOME or CELLULAR line call, press to end the call.

While in a menu, press to cancel an operation, back up to the previous menu, or exit the menu display.

## **CELLULAR**

Press to make or answer a CELLULAR call.

Flashes rapidly when there is an incoming CELLULAR call.

Flashes slowly when a CELLULAR call is on hold.

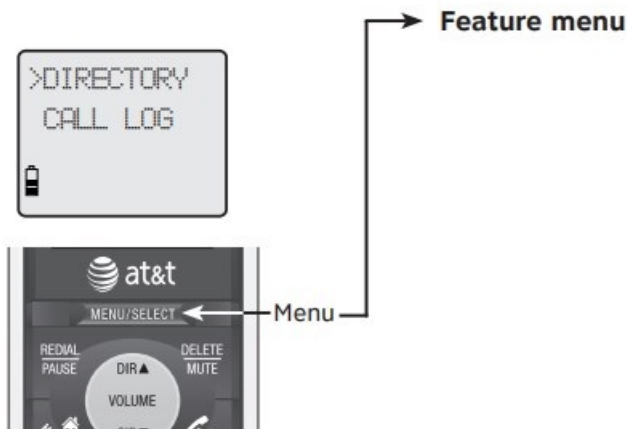
During a CELLULAR call, press to receive an incoming call if call waiting is activated (page 57).

## **HOLD**

Press to put the HOME or CELLULAR call on hold.

## **Feature menu**

The > symbol shows a highlighted menu item.



## **Feature menu**

DIRECTORY (page 34) CALL LOG (page 40) INTERCOM (page XX) RINGER VOLUME (page 16) RINGER TONE (page 17) KEY TONE (page 17) LANGUAGE (page 18) CLR VOICE MAIL (page 19) HOME AREA CODE (page XX)

## **Using menus**

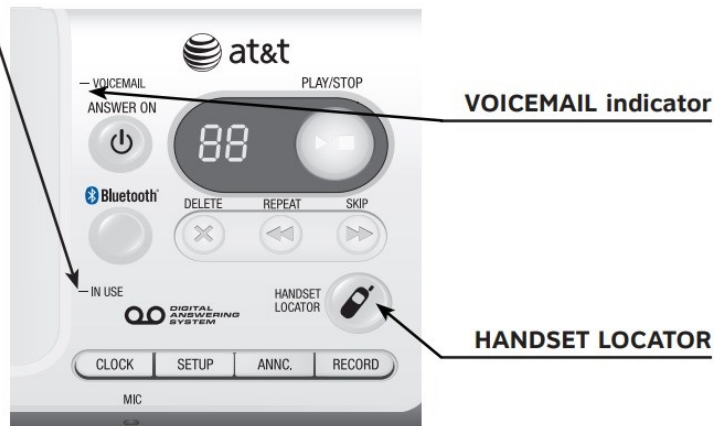
Press or to scroll through menu items.

Press MENU/SELECT to select or save changes to a highlighted menu item.

Press OFF/CLEAR to cancel an operation, back up to the previous menu, or exit the menu display

## **Quick reference guide – telephone base**

## IN USE indicator



## IN USE indicator

- On when the handset is in use, when the answering system is answering an incoming call or when you are registering a handset.
- Flashes when another telephone is in use on the same line, or you are deregistering handset(s) from the telephone base.
- Flashes quickly when there is an incoming call.

## VOICEMAIL indicator

Flashes when you have new voicemail. Voicemail is a service offered by your local telephone company, and is different from answering system messages (page 19).

## HANDSET LOCATOR

Press to make handsets beep so you can locate them (page 23).

## Answering System Functions

### MESSAGE COUNTER

### ANSWER ON

### X/DELETE

### BLUETOOTH

### CLOCK

### SETUP

### PLAY/STOP

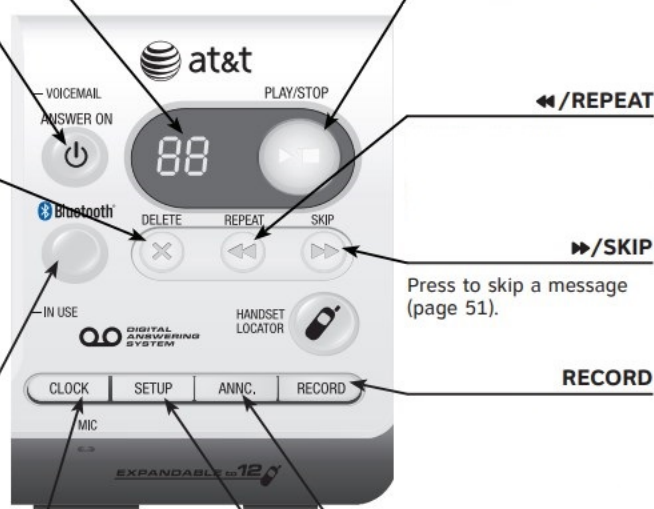
### REPEAT

### SKIP

Press to skip a message (page 51).

### RECORD

### ANNC.



**MESSAGE COUNTER**

Number of messages (or during playback, message number currently playing).

**ANSWER ON**

Press to turn the answering system on or off (page 44).

**X/DELETE**

Press to delete the message currently playing. Press twice to delete all old messages when the phone is not in use (page 51).

**BLUETOOTH**

Press to enable the Bluetooth feature on the telephone base.

On when the telephone base is paired and connected with a cellular phone.

Flashes when the telephone base is paired but not connected with a cellular phone.

**CLOCK**

Press to review or set the clock (page 42).

**SETUP**

Press to hear and change setup options (page 47).

**PLAY/STOP**

Press to start or stop message playback (page 51).

**REPEAT**

Press to repeat a message. Press twice to play the previous message (page 51).

**SKIP**

Press to skip a message (page 51).

**RECORD**

Press to record a memo (page 52) or, after pressing ANNC to record an outgoing announcement (page 45).

**ANNC.**

Press to review or record the outgoing announcement. Press again to end announcement playback or recording (page 45).

**Handset status icons**





**HOME line** – on steady when the HOME line is in use.



**CELLULAR line** – on steady when the CELLULAR line is in use.



**BLUETOOTH** – on steady when a cellular phone is connected with the telephone base.



**NEW VOICE MAIL** – new voicemail received from the local telephone company.



**SPEAKERPHONE** – the speakerphone is in use.



**Ringer off** – the handset ringer is turned off.



**Battery status** – battery is charging (animated display).



**Battery status** – low battery (flashing); place handset in telephone base or charger to recharge.

**MUTE** Microphone is muted.

**NEW** Missed and unreviewed calls.

## Installation setup

You must install and charge

the handset battery before using the cordless handset.

Install the telephone base close to a telephone jack and a power outlet not controlled by a wall switch. The telephone base can be placed on a flat surface or vertically mounted on the wall (see page 10). For optimum range and better reception, place the telephone base in a central and open location.

Depending on the environmental conditions, make sure that your Bluetooth enabled cellular phone is within 12 feet of where you install the telephone base in order to maintain a reliable connection between your Bluetooth cell phone, telephone base, and cell tower.

If you subscribe to high-speed Internet service (Digital Subscriber Line – DSL) through your telephone lines, you must install a DSL filter between the telephone base and the telephone wall jack (see the following page). The

filter will prevent noise and caller ID problems caused by DSL interference. Please contact your DSL service provider for more information about DSL filters.

Your product may be shipped with a protective sticker covering the handset or telephone base display – remove it before use.

For customer service or product information, visit our website at [www.telephones.att.com](http://www.telephones.att.com) or call 1 (800) 222-3111. In Canada, dial 1 (866) 288-4268.

**Avoid placing the telephone base too close to:**

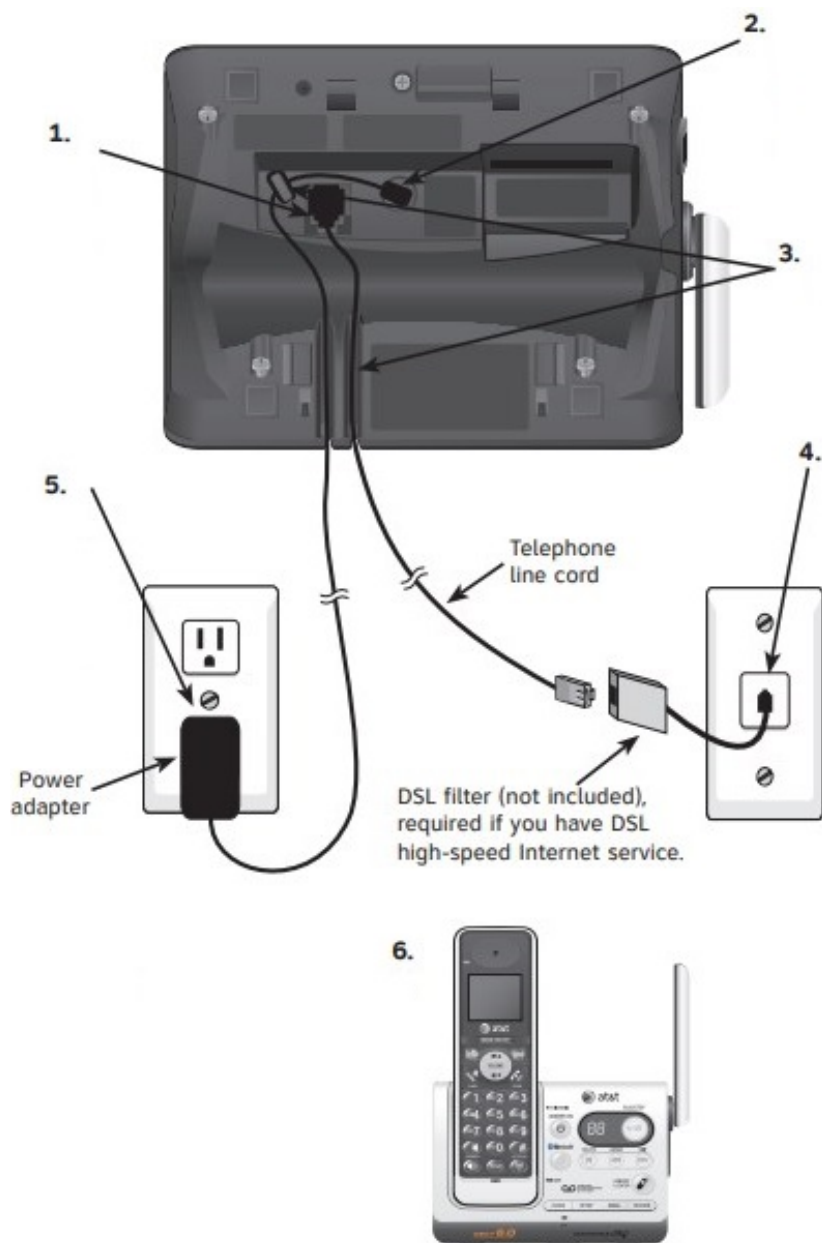
- Communication devices such as: television sets, VCRs, or other cordless telephones.
- Excessive heat sources.
- Noise sources such as a window with traffic outside, motors, microwave ovens, refrigerators, or fluorescent lighting.
- Excessive dust sources such as a workshop or garage.
- Excessive moisture.
- Extremely low temperature.
- Mechanical vibration or shock such as on top of the washing machine or work bench.

**Telephone base installation**

Install the telephone base as shown below. Make sure that the electrical outlet is not controlled by a wall switch.

If you subscribe to high-speed Internet service (Digital Subscriber Line – DSL) through your telephone lines, you must install a DSL filter between the telephone base and the telephone wall jack. The filter will prevent noise and caller ID problems caused by DSL interference. Please contact your DSL service provider for more information about DSL filters.

The telephone base is set for desktop use. If you want to change to wall If you want to change to wall mounting position, you will need to install the provided bracket to the telephone base, see page 10 for details.



1. Plug one end of the telephone line cord into the telephone jack at the bottom of the telephone base (if necessary)
2. Plug the small end of the power adapter into the power jack at the bottom of the telephone base.
3. Route cords through slots.
4. Plug the other end of the telephone line cord into a telephone jack
5. Plug the large end of the power adapter into a power outlet not controlled by a wall switch.
6. Raise the antenna.

## Charger installation

Plug the power adapter into an electrical outlet not controlled by a wall switch.



## IMPORTANT INFORMATION

1. Use only the power adapter(s) supplied with this product. To order a replacement power adapter, visit our website at [www.telephones.att.com](http://www.telephones.att.com), or call 1 (800) 222-3111. In Canada, dial 1 (866) 288-4268.
2. The power adapters are intended to be correctly oriented in a vertical or floor mount position. The prongs are not designed to hold the plug in place if it is plugged into a ceiling, under-the-table or cabinet outlet.

## Battery installation & charging

Install the battery as shown below. After installing the battery, you can make and receive short calls, but replace the handset in the telephone base or charger when not in use. For optimal performance, charge the handset battery for at least 16 hours before use. When fully charged, the handset battery provides approximately five hours of talk time or three days of standby time.

### Step 1

Press the depression and slide the battery compartment cover downwards (if necessary).



### Step 2

Plug the battery securely into the connector inside the handset battery compartment, matching the color-coded label. Insert the supplied battery with the label THIS SIDE UP facing up as indicated.



### Step 3

Align the cover flat against the battery compartment cover, then slide it upwards until it clicks into place.



### Step 4

Charge the handset by placing it face up in the telephone base or charger. The CHARGE light will be on when charging.



### IMPORTANT INFORMATION

Use only the supplied rechargeable battery or replacement battery (model BT8001). To order, visit our website at [www.telephones.att.com](http://www.telephones.att.com) or call 1 (800) 222- 3111. In Canada, dial 1 (866) 288-4268.

### Installation options

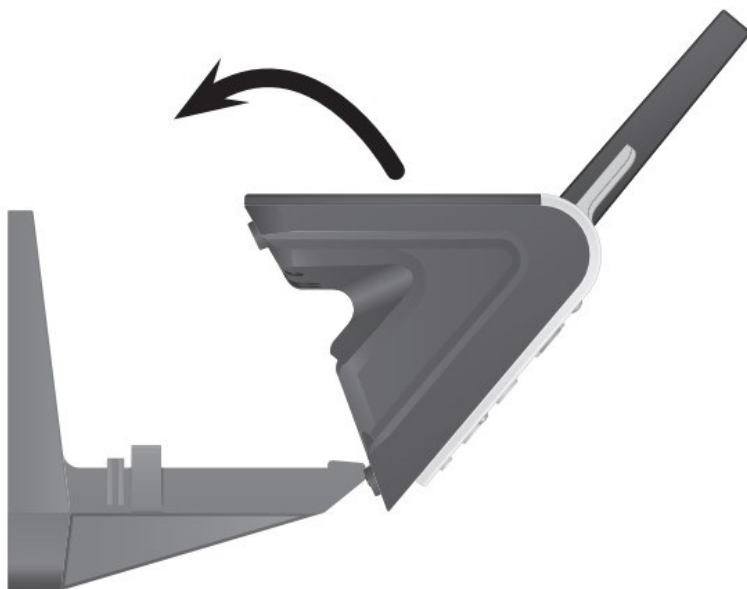
The telephone base is set for desktop use. It is possible to change to wall mounting position by installing the bracket provided. Wall mounting requires a telephone outlet wall mounting plate with mounting studs that may require professional installation. You can purchase the mounting plate from many hardware or consumer electronics retailers.

#### Desktop to wall mount installation

To change the telephone base to the wall mount position, make sure that you first unplug the telephone line cord and power adapter cord from the wall outlets before you begin.

1. Position the telephone base as shown below, and insert the extended tabs of the bracket into the slots under

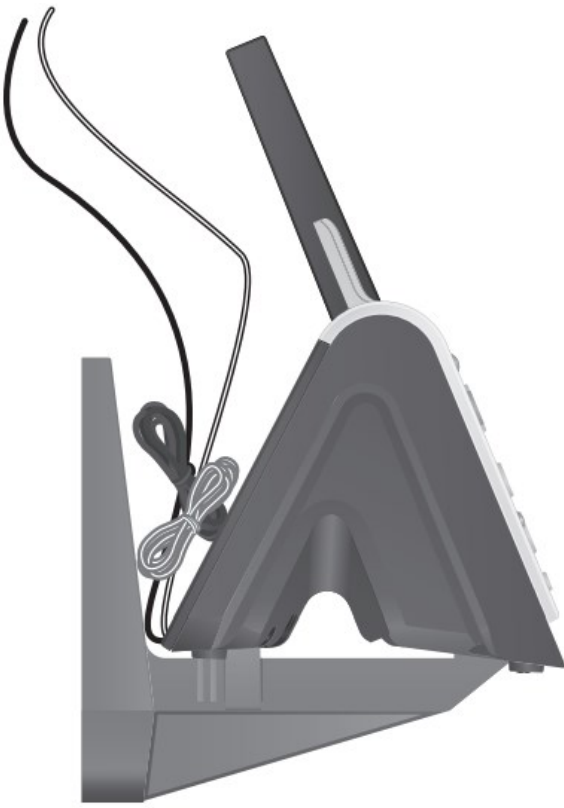
the telephone base.



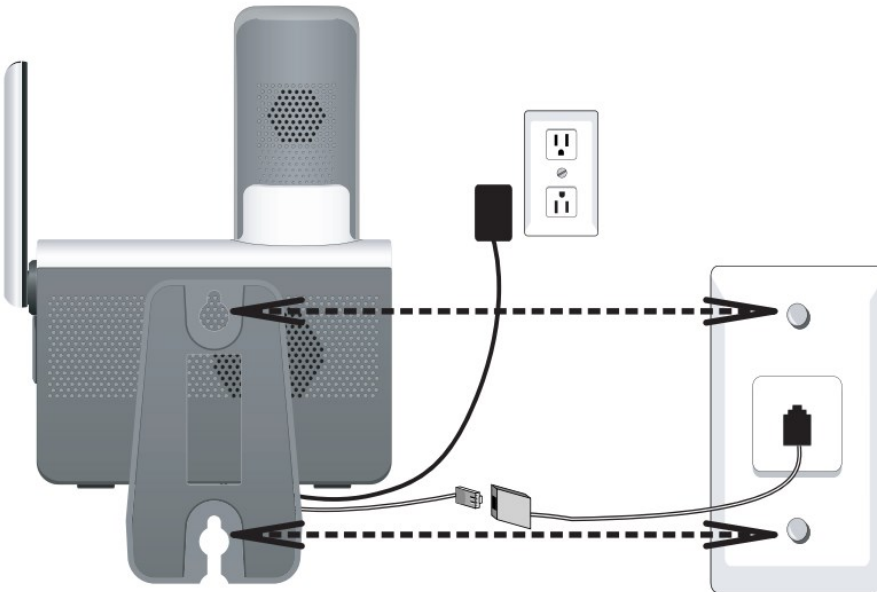
2. Push down the telephone base until it clicks into the catches on both sides of the bracket.



3. Bundle the telephone line cord and power adapter cord, and secure them with a twist tie before placing them behind the telephone base as shown below.



4. Align the holes on the bracket with the standard wall plate and slide the bracket until the telephone is secured as shown below. Plug the telephone line cord into a telephone wall jack. Plug the power adapter into an power outlet not controlled by a wall switch.



5. Make sure the telephone is securely positioned as shown below



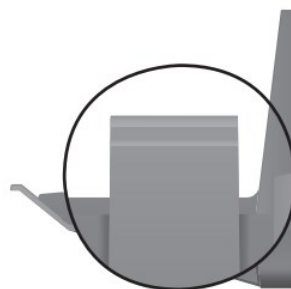
### Wall mount to desktop installation

To change the telephone base to the desktop position, make sure that you first make sure that you first unplug the telephone line cord and power adapter cord from the wall outlets before you begin.

1. Remove the telephone base from the wall and untie the bundled telephone line cord and power adapter cord.
2. Press on the catches on both sides of the bracket (indicated by arrows below) to unlock the telephone base from the bracket.

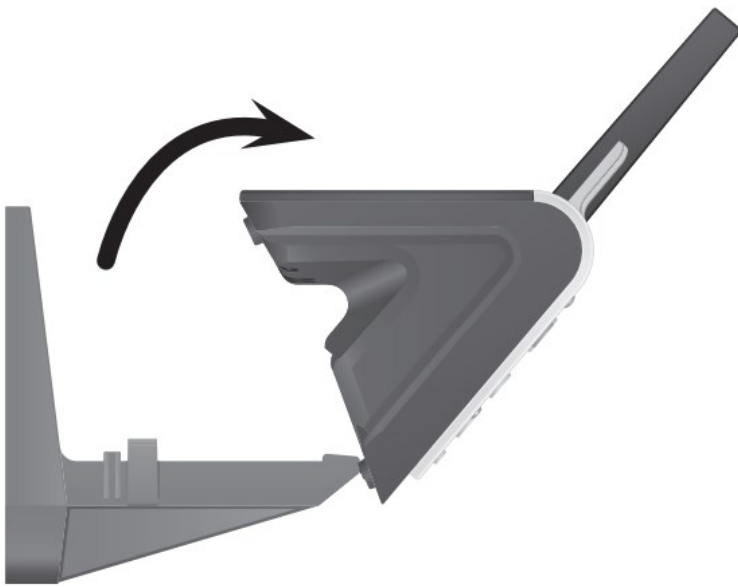


The catch on the side of the telephone base.

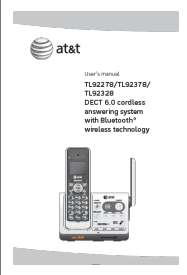


3. Pull the telephone base up to detach it from the bracket.








## Documents / Resources

 The thumbnail shows the front cover of the user manual. It features the AT&T logo at the top, followed by the text "User's Manual", "TL92278/TL92378/TL92328", "DECT 6.0 cordless answering system with Bluetooth® wireless technology", and an image of the cordless phone handset and base.	<p><a href="#">AT T TL92278 DECT 6.0 Cordless Answering System</a> [pdf] User Manual TL92278, TL92378, TL92328, TL92278 DECT 6.0 Cordless Answering System, DECT 6.0 Cordless Answering System, Cordless Answering System, Answering System</p>
---	---

## References

-  [ENERGY STAR | The simple choice for energy efficiency.](#)
-  [Official AT&T® Telephone Store for Home & Small Offices](#)
-  [Search - Manual-Hub.com](#)