

Turbo Hotspot 2 User Guide: Set Up & Connect | CT2MHS01 Hotspot.Webui

[Home](#) » [AT&T](#) » Turbo Hotspot 2 User Guide: Set Up & Connect | CT2MHS01 Hotspot.Webui 

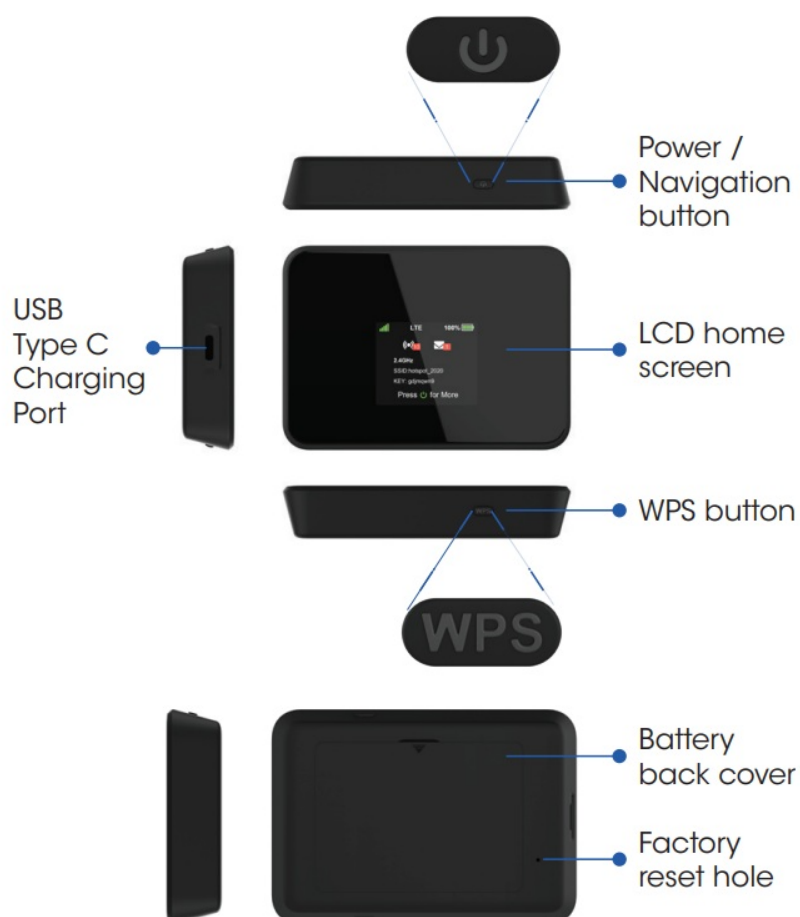
The AT T CT2MHS01 Turbo Hotspot 2 User Guide provides detailed instructions on how to set up and connect your mobile hotspot. The guide includes a quick start guide, display layout and icons, and instructions on how to connect to the internet. It also provides information on how to access the online WebUI manager to manage your hotspot's settings, features, and controls. Additionally, the guide includes instructions on how to use the Wi-Fi options, parental control, blocking devices, website filter/configuration, reading messages, and the WPS button. The user guide also includes important warnings about performing a factory reset and only using the standard micro-SIM card provided to avoid any damage to the device. By following these instructions, users can easily set up and connect their mobile hotspot and take advantage of its various features and controls.

Quick Start Guide Turbo Hotspot 2

Contents

- [1 Get to Know Your Mobile Hotspot](#)
- [2 Set Up Your Mobile Hotspot](#)
- [3 Removing Your SIM Card](#)
- [4 Display Layout and Icons](#)
- [5 Connect to the Internet](#)
- [6 Mobile Hotspot LCD Screens](#)
- [7 Online WebUI Manager](#)
- [8 Wi-Fi Options](#)
- [9 Parental Control](#)
- [10 Blocking Devices](#)
- [11 Website Filter/Configuration](#)
- [12 Reading Messages](#)
- [13 WPS Button](#)
- [14 SPECIFICATION](#)
- [15 FAQs](#)
- [16 Documents / Resources](#)
- [17 Related Posts](#)

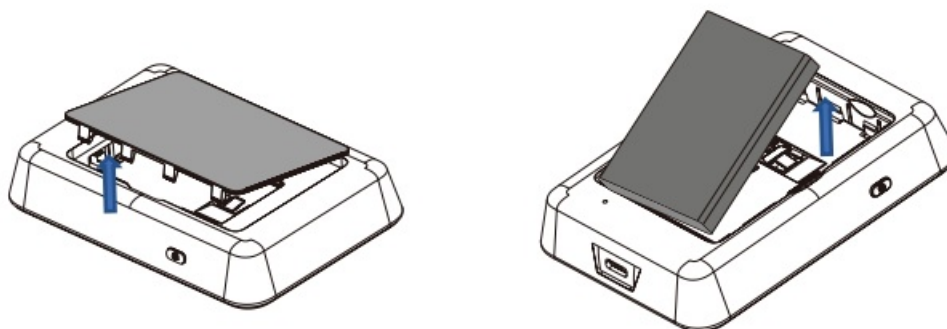
Get to Know Your Mobile Hotspot



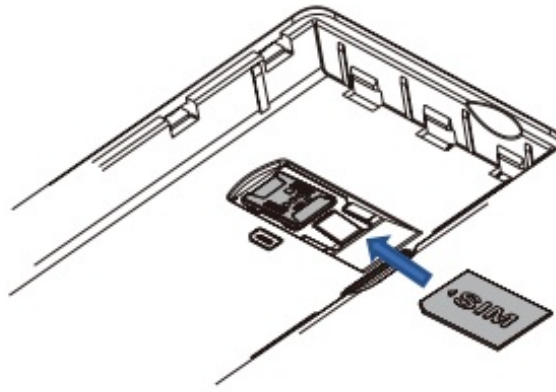
Note: To perform a factory reset, insert a narrow object, such as a paperclip, into the factory reset hole (on the bottom of the device), then push in and hold for 6 seconds. When you turn on the device, it will be restored to the default factory settings.

Set Up Your Mobile Hotspot

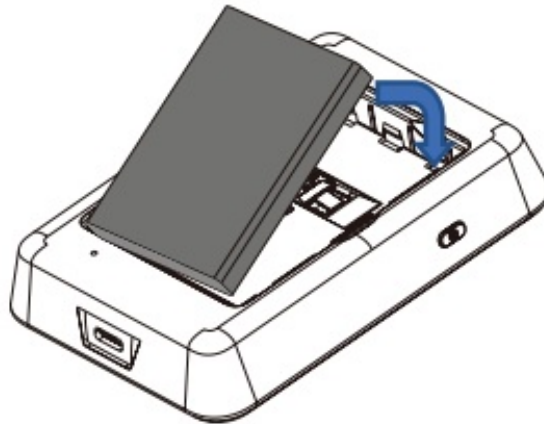
1. Remove back cover, and take the battery out.



2. Remove the SIM card from the outer card.
3. Locate the SIM card slot. Hold SIM so that the cut corner is at the top and gold contacts are facing downward. Insert SIM by pressing down on the clip and sliding into the SIM slot.



4. Insert the battery. Install the back cover, the arrow on the back cover points downward.



5. Charge mobile hotspot fully.

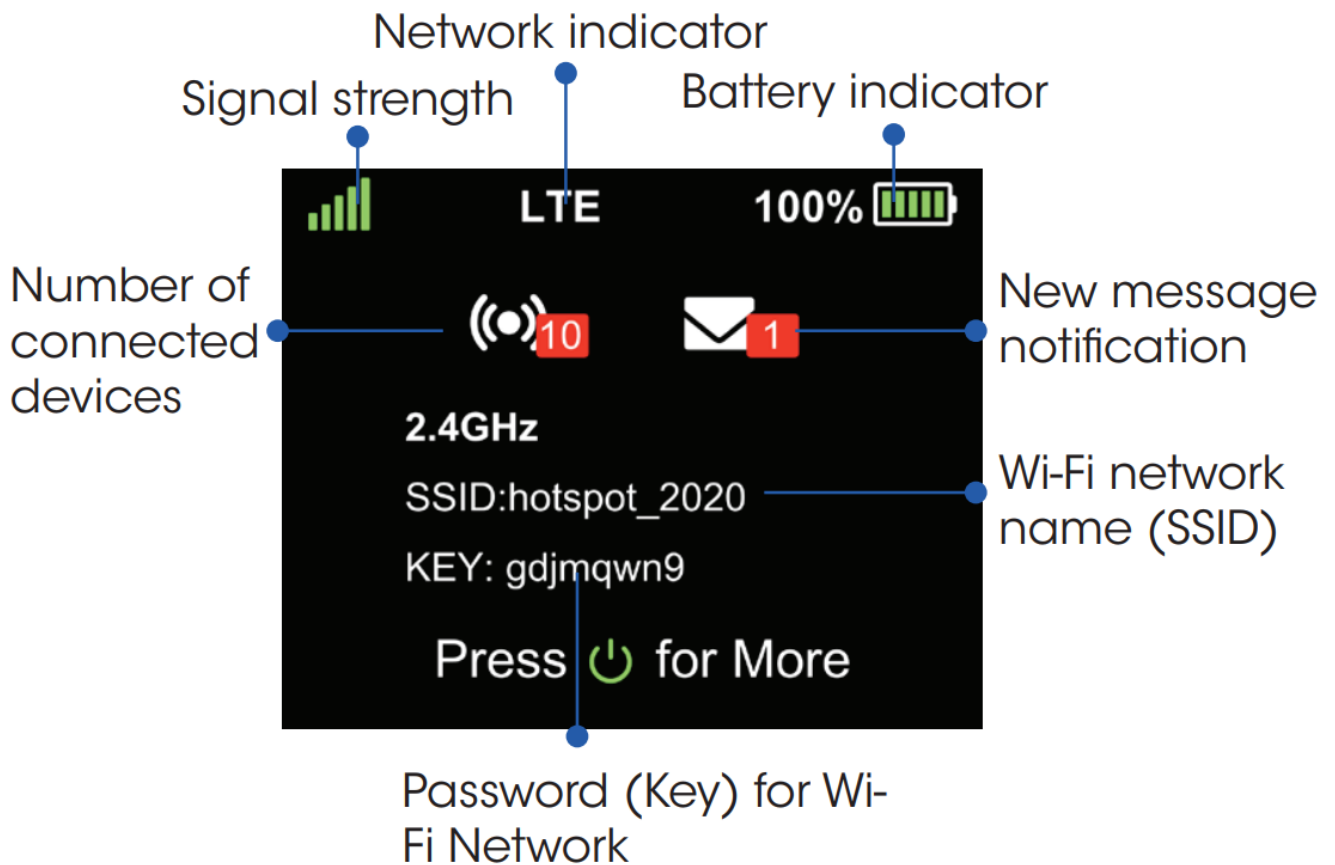
Removing Your SIM Card

1. Remove back cover, and take the battery out.
2. Locate the SIM card slot.
3. Push down on the plastic clip in front of the SIM card, while sliding the SIM card out of its slot.

Warning: To avoid any damage to your device, only use the standard micro-SIM card provided.

Display Layout and Icons

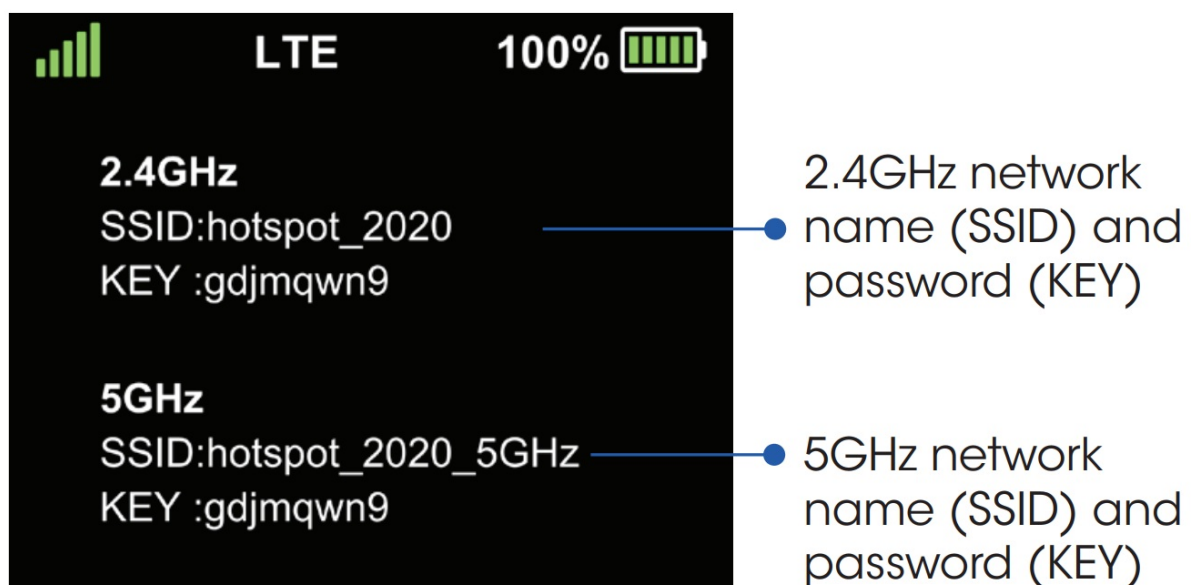
1. Press and hold the Power/Navigation button for 3 seconds.



Note: Display screen will timeout after 1 minute of inactivity to save power. Press the Power/ Navigation button to wake the screen. This default setting can be adjusted in the online WebUI.

Connect to the Internet

1. Turn on your mobile hotspot by pressing and holding the Power/Navigation button for 3 seconds.
2. Open the Wi-Fi network manager on your computer, smartphone, tablet, or Wi-Fi-enabled device.
3. Find and select your mobile hotspot's Wi-Fi network (SSID) named "hotspot_XXXX" for the 2.4GHz Wi-Fi network or "hotspot_XXXX_5GHz" for the 5GHz Wi-Fi network.
4. Connect by entering the password (key) shown on your mobile hotspot's display.

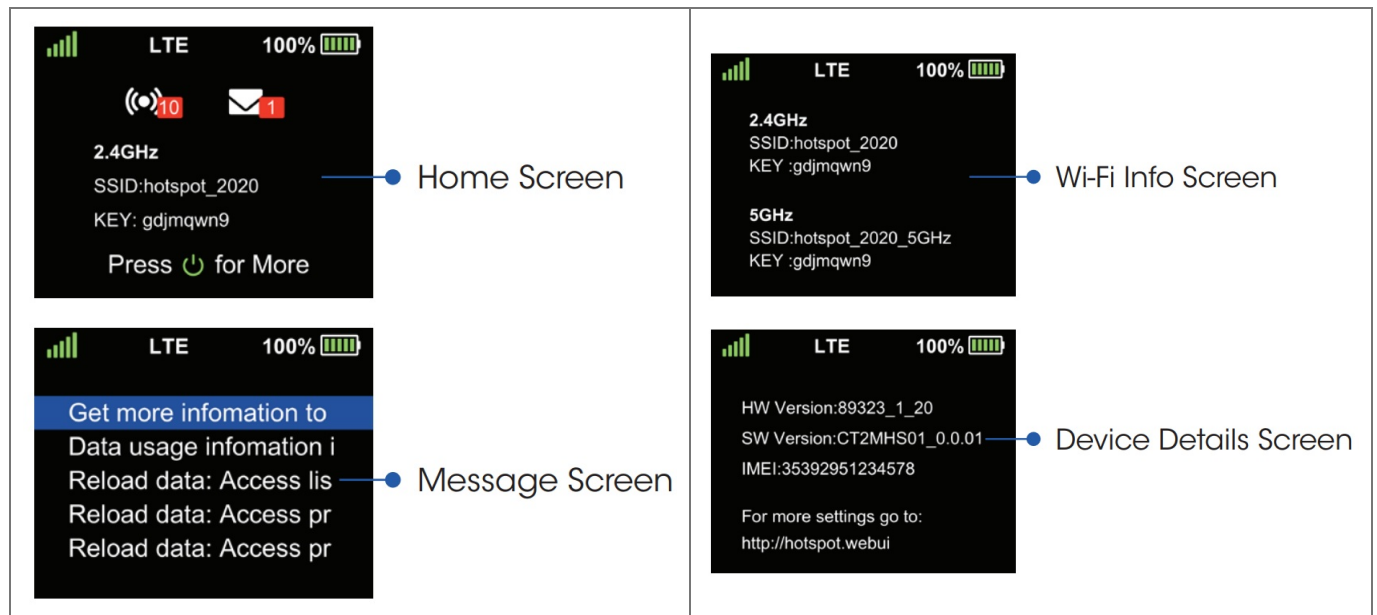


5. Open a web browser and visit your favorite website to confirm your connection.

Note: Wi-Fi network name (SSID) and Wi-Fi network password (key) can be changed in the online WebUI under Wi-Fi Basic Setting.

Mobile Hotspot LCD Screens

Press the Power/Navigation button to scroll through the screens.

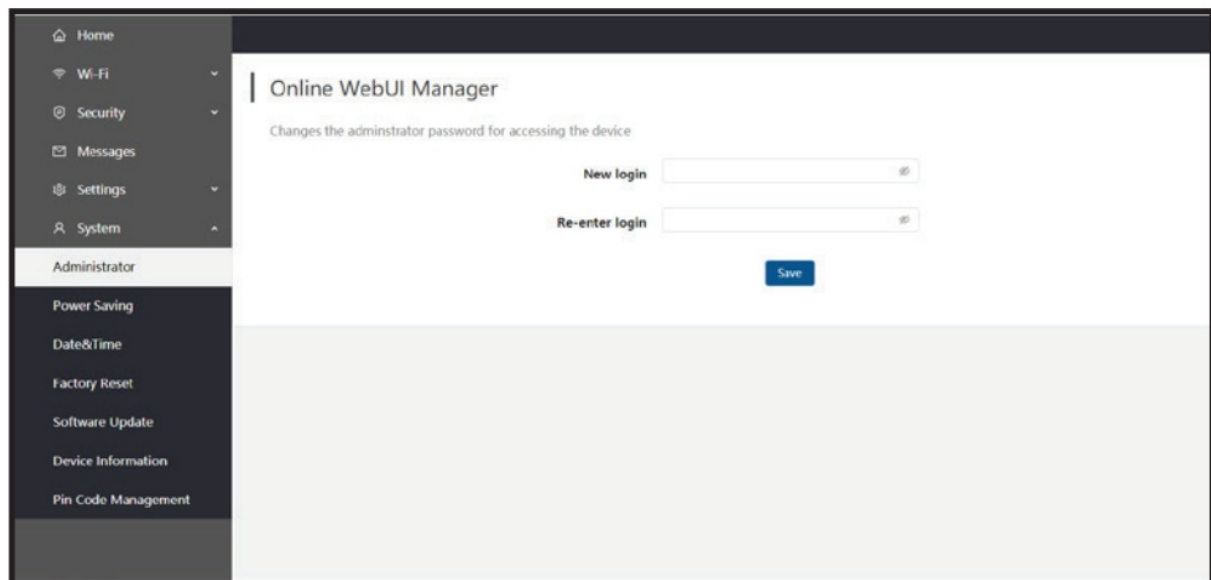


Note: The Message Screen will only appear when there is an unread message on your device.

Online WebUI Manager

Access the online WebUI to manage your mobile hotspot's settings, features, and controls.

1. Open a web browser on a computer or Wi-Fi-enabled device that is connected to the mobile hotspot's Wi-Fi network. Make sure your device is already connected to the mobile hotspot's Wi-Fi network.
2. Enter <http://192.168.1.1> (or <http://hotspot.webui>) in the address bar of the browser.
3. Enter WebUI password and select Login. The admin password for the online **WebUI is the last 8-digits of the IMEI code**, which is printed on the device label (underneath the battery). IMEI code is also listed on the Device Details screen of your device.



Note: Admin password (last 8 digits of IMEI) can be changed in the online WebUI under System>Administrator.

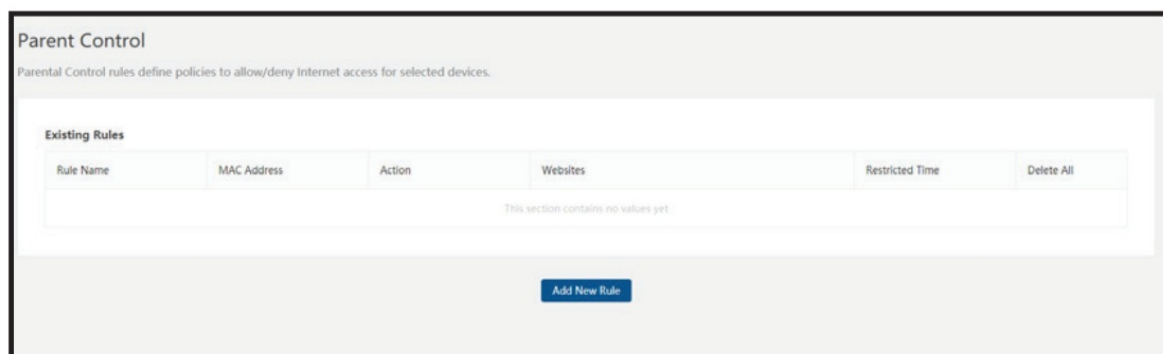
Wi-Fi Options

1. Log in to the online WebUI Manager.
2. Select **Wi-Fi > Wi-Fi Basic Settings**.
3. Select **2.4GHz only**, **5GHz only**, or **Dual-Band 2.4GHz & 5GHz**.
4. Click **Save**.

Parental Control

Limit the websites certain Wi-Fi-enabled devices are able to connect to and the times they are allowed to connect.

1. Log in to online WebUI Manager.
2. Select **Security > Parent Control**.
3. Click the **Add New Rule button** to enable Parent Control.
4. Enter the content as required.
5. Click **Save**.



Blocking Devices

Block unwanted devices from connecting to your mobile hotspot.

1. Log in to online WebUI Manager.
2. Select **Security > MAC Filter**.
3. Select **blacklist or whitelist mode**.
4. Click “Add New Rule” then input a MAC address to add a new whitelist or blacklist rule.
5. Click **Save**.

Website Filter/Configuration

Block your device from connecting to unwanted websites while connected to your mobile hotspot.

1. Log in to online WebUI Manager.
2. Select **Security > Website filter**.
3. Select **blacklist or whitelist mode**.
4. Click “ ” then input a Website Filter to add a new whitelist or blacklist rule.
5. Click **Save**.

Reading Messages

The message icon on the Home Screen will indicate when a new message is received.

1. Press the Power/Navigation button from the Home Screen to scroll to the Message Screen.
2. The highlighted message will automatically scroll left to right to display the entire contents of the message.
3. Press the Power/Navigation to switch to the next message.
4. You can delete saved messages in the online WebUI Manager.

Note: When there are no unread messages, the Message Screen will not appear on the hotspot.

WPS Button

Connect securely without having to manually input the Wi-Fi password (key).

1. Open the Wi-Fi network manager on your computer, smartphone, tablet, or Wi-Fi-enabled device.
2. Find your mobile hotspot’s Wi-Fi network (SSID) named “**hotspot_XXXX**” for the 2.4GHz Wi-Fi network or “**hotspot_XXXX_5GHz**” for the 5GHz Wi-Fi network.
3. Activate the WPS connection on your device.
4. Press the WPS button on the hotspot and wait a moment until your device is connected to the network.
5. **WPS Success**” will be displayed on the hotspot to confirm the connection.

DOC20200701

SPECIFICATION

Model	AT T CT2MHS01 Turbo Hotspot 2
Display	LCD Screen
Connectivity	Wi-Fi (2.4GHz and 5GHz)
Wi-Fi Network Name (SSID)	hotspot_XXXX (2.4GHz) and hotspot_XXXX_5GHz (5GHz)
Wi-Fi Network Password (Key)	Displayed on the mobile hotspot's LCD screen
WebUI Manager	http://192.168.1.1 or http://hotspot.webui
Admin Password	Last 8-digits of the IMEI code (printed on device label and listed on Device Details screen)
Parental Control	Limit website access and connection times for certain devices
Blocking Devices	Block unwanted devices from connecting to the mobile hotspot
Website Filter/Configuration	Block device from connecting to unwanted websites
Message Screen	Displays unread messages
WPS Button	Connect securely without manually inputting Wi-Fi password

FAQS

Q: How do I connect securely without having to manually input the Wi-Fi password (key) on my Turbo Hotspot 2?

A: To connect securely without having to manually input the Wi-Fi password (key), open the Wi-Fi network manager on your computer, smartphone, tablet, or Wi-Fi-enabled device. Find your mobile hotspot's Wi-Fi network (SSID) named "hotspot_XXXX" for the 2.4GHz Wi-Fi network or "hotspot_XXXX_5GHz" for the 5GHz Wi-Fi network. Activate the WPS connection on your device. Press the WPS button on the hotspot and wait a moment until your device is connected to the network. "WPS Success" will be displayed on the hotspot to confirm the connection.

Q: How do I read messages on my Turbo Hotspot 2?

A: To read messages on your mobile hotspot, press the Power/Navigation button from the Home Screen to scroll to the Message Screen. The highlighted message will automatically scroll left to right to display the entire contents of the message. Press the Power/Navigation to switch to the next message. You can delete saved messages in the online WebUI Manager.

Q: How do I block my device from connecting to unwanted websites while connected to my Turbo Hotspot 2?

A: To block your device from connecting to unwanted websites while connected to your mobile hotspot, log in to online WebUI Manager, select Security > Website filter, select blacklist or whitelist mode, click "then input a Website Filter to add a new whitelist or blacklist rule, click Save.

Q: How do I block unwanted devices from connecting to my Turbo Hotspot 2?

A: To block unwanted devices from connecting to your mobile hotspot, log in to online WebUI Manager, select Security > MAC Filter, select blacklist or whitelist mode, click "Add New Rule" then input a MAC address to add a new whitelist or blacklist rule, click Save.

Q: How do I enable parental control on my Turbo Hotspot 2?

A: To enable parental control, log in to online WebUI Manager, select Security > Parent Control, click the Add New Rule button to enable Parent Control, enter the content as required, click Save.

Q: How do I change the Wi-Fi network name (SSID) and password (key) on my Turbo Hotspot 2?

A: To change the Wi-Fi network name (SSID) and password (key), log in to the online WebUI manager, select Wi-Fi > Wi-Fi Basic Settings, select 2.4GHz only, 5GHz only, or Dual-Band 2.4GHz & 5GHz, click Save.

Q: How do I access the online WebUI manager to manage my Turbo Hotspot 2's settings?

A: To access the online WebUI manager, open a web browser on a computer or Wi-Fi-enabled device that is connected to the mobile hotspot's Wi-Fi network. Make sure your device is already connected to the mobile hotspot's Wi-Fi network. Enter <http://192.168.1.1> (or <http://hotspot.webui>) in the address bar of the browser. Enter WebUI password and select Login. The admin password for the online WebUI is the last 8-digits of the IMEI code, which is printed on the device label (underneath the battery). IMEI code is also listed on the Device Details screen of your device.

Q: How do I change the Wi-Fi network name (SSID) and password (key) on my Turbo Hotspot 2?

A: To connect to the internet, turn on your mobile hotspot by pressing and holding the Power/Navigation button for 3 seconds. Open the Wi-Fi network manager on your computer, smartphone, tablet, or Wi-Fi-enabled device. Find and select your mobile hotspot's Wi-Fi network (SSID) named "hotspot_XXXX" for the 2.4GHz Wi-Fi network or "hotspot_XXXX_5GHz" for the 5GHz Wi-Fi network. Connect by entering the password (key) shown on your mobile hotspot's display. Open a web browser and visit your favorite website to confirm your connection.

Q: How do I connect to the internet using my Turbo Hotspot 2?

A: To access the online WebUI manager, open a web browser on a computer or Wi-Fi-enabled device that is connected to the mobile hotspot's Wi-Fi network. Make sure your device is already connected to the mobile hotspot's Wi-Fi network. Enter <http://192.168.1.1> (or <http://hotspot.webui>) in the address bar of the browser. Enter WebUI password and select Login. The admin password for the online WebUI is the last 8-digits of the IMEI code, which is printed on the device label (underneath the battery). IMEI code is also listed on the Device Details screen of your device.

How do I set up my Turbo Hotspot 2?

A: To set up your mobile hotspot, remove the back cover and battery, remove the SIM card from the outer card, locate the SIM card slot, hold the SIM so that the cut corner is at the top and gold contacts are facing downward, insert SIM by pressing down on the clip and sliding into the SIM slot, insert the battery, install the back cover, charge mobile hotspot fully.

How do I perform a factory reset on the Turbo Hotspot 2?

To perform a factory reset, insert a narrow object, such as a paperclip, into the factory reset hole (on the bottom of the device), then push in and hold for 6 seconds. When you turn on the device, it will be restored to the default factory settings.

Documents / Resources

	<p>AT T CT2MHS01 Turbo Hotspot 2 [pdf] User Guide CT2MHS01, Turbo Hotspot 2</p>
-------------------------------------------------------------------------------------	-----------------------------------------------------------------------------------------------------