

Asus tek Computer EXP21 Smartphone User Manual

[Home](#) » [Asustek Computer](#) » **Asus tek Computer EXP21 Smartphone User Manual** 



Contents

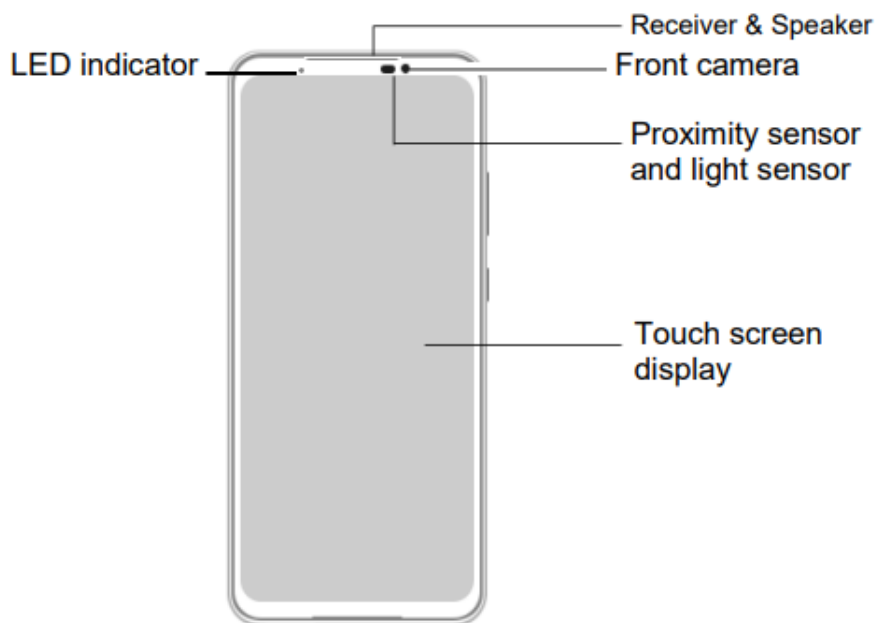
- [1 Asus tek Computer EXP21 Smartphone](#)
- [2 Front features](#)
- [3 Side and rear features](#)
- [4 Charging your Smartphone](#)
- [5 Installing a Nano SIM card](#)
- [6 Using NFC](#)
- [7 Federal Communications Commission Statement](#)
- [8 FCC Statement \(HAC\)](#)
- [9 Prevention of Hearing Loss](#)
- [10 Using GPS \(Global Positioning System\) on your Smartphone](#)
- [11 Safety information](#)
- [12 Smartphone care](#)
- [13 The charger](#)
- [14 Recycling/Takeback Services](#)
- [15 Proper disposal](#)
- [16 FCC COMPLIANCE INFORMATION](#)
- [17 Documents / Resources](#)
- [18 Related Posts](#)

Asus tek Computer EXP21 Smartphone

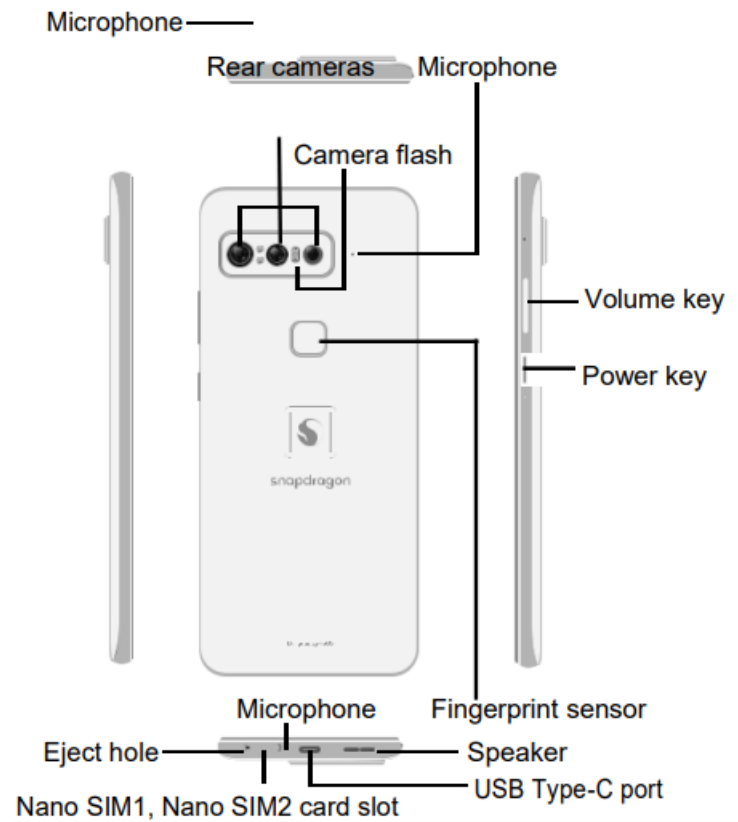


First Edition / January 2021 Model: ASUS_I007D Before you start, ensure that you have read all the safety information and operating instructions in this User Guide to prevent injury or damage to your device.

Front features



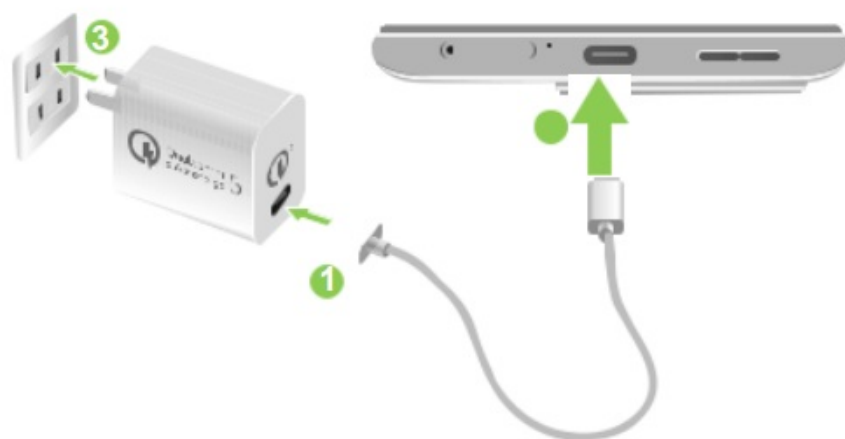
Side and rear features



Charging your Smartphone

To charge your Smartphone:

1. Connect the USB connector into the power adapter's USB port.
2. Connect the other end of the USB cable to your Smartphone.
3. Plug the power adapter into a wall socket.



IMPORTANT:

- When using your Smartphone while it is plugged to a power outlet, the grounded power outlet must be near to the unit and easily accessible.
- When charging your Smartphone through your computer, ensure that you plug the USB cable to your

computer's USB port.

- Avoid charging your Smartphone in an environment with ambient temperature of above 35°C (95°F).

NOTES:

- For safety purposes, use ONLY the bundled power adapter and cable to avoid damaging your device and prevent the risk of injury.
- Only the USB Type-C port on the bottom side of your phone has DisplayPort functionality.
- For safety purposes, use ONLY the bundled power adapter and cable to charge your Smartphone.
- The input voltage range between the wall outlet and this adapter is AC 100V – 240V. The output voltage of the AC power adapter for this device is +5V-20V

Installing a Nano SIM card

To install a Nano SIM card:

1. Push the bundled eject pin into the hole on the card slot to eject the tray out.
2. Insert the Nano SIM card(s) into the card slot(s).



3. Push the tray to close it.



NOTES:

- Both Nano SIM card slots support GSM/GPRS/EDGE, WCDMA/HSPA+/ DC-HSPA+, FDD-LTE, TD-LTE, and 5G NR Sub-6 & mmWave network bands. Both Nano SIM cards can connect to VoLTE (4G Calling) service. But only one can connect to 5G NR Sub-6 & mmWave data service at a time.
- Actual network and frequency band usage depends on network deployment in your area. Contact your telecom carrier if 5G NR Sub-6 & mmWave support and VoLTE (4G Calling) service are available in your area.

CAUTION!

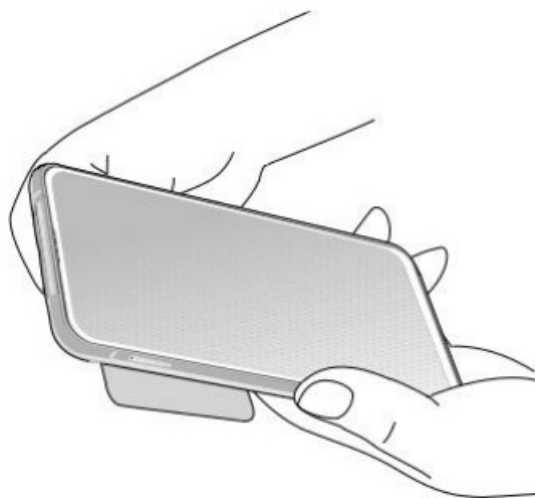
- Do not use sharp tools or solvent on your device to avoid scratches on it.
- Use only a standard Nano SIM card on your Smartphone.

Using NFC

NOTE: NFC is only available in selected regions/countries.

You can use NFC in the following two scenarios:

Reader mode: Your phone reads information from a contactless card, NFC tag, or other NFC devices. Place the NFC area of your phone on the contactless card, NFC tag, or NFC device.



Card Emulation mode: Your phone can be used like a contactless card. Place the NFC area of your phone on the NFC area of the NFC reader.



Federal Communications Commission Statement

This device complies with part 15 of the FCC Rules. Operation is subject to the following two conditions: (1) This device may not cause harmful interference, and (2) this device must accept any interference received, including interference that may cause undesired operation.

Changes or modifications not expressly approved by the party responsible for compliance could void the user's authority to operate the equipment.

This equipment has been tested and found to comply with the limits for a Class B digital device, pursuant to part 15 of the FCC Rules. These limits are designed to provide reasonable protection against harmful interference in a residential installation. This equipment generates, uses and can radiate radio frequency energy and, if not installed and used in accordance with the instructions, may cause harmful interference to radio communications. However, there is no guarantee that interference will not occur in a particular installation. If this equipment does cause harmful interference to radio or television reception, which can be determined by turning the equipment off and on, the user is encouraged to try to correct the interference by one or more of the following measures:

- Reorient or relocate the receiving antenna.
- Increase the separation between the equipment and receiver.
- Connect the equipment into an outlet on a circuit different from that to which the receiver is connected.
- Consult the dealer or an experienced radio/TV technician for help. The antenna(s) used for this transmitter must not be co-located or operated in conjunction with any other antenna or transmitter.

The country code selection is for non-US models only and is not available to all US models. Per FCC regulation, all WiFi products that are marketed in US must be fixed to US-operated channels only. Prohibited for control of or communications with unmanned aircraft systems, including drones The responsible party within the USA per 47 CFR Part 2.1077(a)(3): ASUS COMPUTER INTERNATIONAL (America) Address: 48720 Kato Rd., Fremont, CA 94538, USA Telephone: +1-510-739-3777

RF Exposure Information (SAR)

This device has been tested and meets applicable limits for Radio Frequency (RF) exposure. Specific Absorption Rate (SAR) refers to the rate at which the body absorbs RF energy. SAR limits are 1.6 Watts per kilogram (over a volume containing a mass of 1 gram of tissue) in countries that follow the United States FCC limit and 2.0 W/kg

(averaged over 10 grams of tissue) in countries that follow the Council of the European Union limit. Tests for SAR are conducted using standard operating positions with the device transmitting at its highest certified power level in all tested frequency bands. To reduce exposure to RF energy, use a hands-free accessory or other similar option to keep this device away from your head and body. Carry this device at least 15 mm away from your body to ensure exposure levels remain at or below the as-tested levels. Choose the belt clips, holsters, or other similar body-worn accessories which do not contain metallic components to support operation in this manner. Cases with metal parts may change the RF performance of the device, including its compliance with RF exposure guidelines, in a manner that has not been tested or certified, and use such accessories should be avoided.

The highest FCC SAR values for the device (ASUS_I007D) are as follows:

- 1.19 W/Kg @1g(Head)
- 0.68 W/Kg @1g(Body)

The FCC has granted an Equipment Authorization for this device with all reported SAR levels evaluated as in compliance with the FCC RF exposure guidelines. SAR information on this device is on file with the FCC and can be found under the Display Grant section of www.fcc.gov/oet/ea/fccid after searching on FCC ID: MSQI007D.

FCC Statement (HAC)

This phone has been tested and rated for use with hearing aids for some of the wireless technologies that it uses. However, there may be some newer wireless technologies used in this phone that have not been tested yet for use with hearing aids. It is important to try the different features of this phone thoroughly and in different locations, using your hearing aid or cochlear implant, to determine if you hear any interfering noise. Consult your service provider or the manufacturer of this phone for information on hearing aid compatibility. If you have questions about return or exchange policies, consult your service provider or phone retailer. The Federal Communications Commission has implemented rules and a rating system designed to enable people who wear hearing aids to more effectively use these wireless telecommunications devices. The standard for compatibility of digital wireless phones with hearing aids is set forth in American National Standard Institute (ANSI) standard C63.19-2011. There are two sets of ANSI standards with ratings from one to four (four being the best rating): an “M” rating for reduced interference making it easier to hear conversations on the phone when using the hearing aid microphone, and a “T” rating that enables the phone to be used with hearing aids operating in the telecoil mode thus reducing unwanted background noise.

The Hearing Aid Compatibility rating is displayed on the wireless phone box. A phone is considered Hearing Aid Compatible for acoustic coupling (microphone mode) if it has an “M3” or “M4” rating. A digital wireless phone is considered Hearing Aid Compatible for inductive coupling (telecoil mode) if it has a “T3” or “T4” rating. The tested M-Rating and T-Rating for this device (ASUS_I007D) are M3 and T3. You’ll want to try a number of wireless phones so that you can decide which works the best with your hearing aids. You may also want to talk with your hearing aid professional about the extent to which your hearing aids are immune to interference, if they have wireless phone shielding, and whether your hearing aid has a HAC rating. Device 6 GHz operation is intended for indoor use only.

FCC regulations restrict the operation of this device to indoor use only. Operation prohibited on oil platforms, cars, trains, boats, and aircraft, except that operation of this device is permitted in large aircraft while flying above 10,000 feet.

Canada, Industry Canada (IC) Notices

This device complies with Industry Canada’s licence-exempt RSS standard(s). Operation is subject to the following two conditions:

- This device may not cause interference; and
- This device must accept any interference, including interference that may cause undesired operation of the device.

This device for operation in the band 5150-5250 MHz is only for indoor use to reduce the potential for harmful interference to co-channel mobile satellite systems. This equipment should be installed and operated with minimum distance 15 mm between the radiator and your body. Informations concernant l’exposition aux fréquences radio (RF) contacts humains lors d’un fonctionnement normal.

CAN ICES-003(B)/NMB-003(B) This Class B digital apparatus complies with Canadian ICES-003. This device and its antenna(s) must not be co-located or operated in conjunction with any other antenna or transmitter, except tested built-in The County Code Selection feature is disabled for products that are marketed in the US/ Canada.

Prevention of Hearing Loss

To prevent possible hearing damage, do not listen at high volume levels for long periods.



For France, headphones/earphones for this device are compliant with the sound pressure level requirement laid down in the applicable EN 50332-1:2013 and/or EN50332-2:2013 standard required by French Article L.5232-1.

Using GPS (Global Positioning System) on your Smartphone

To use the GPS positioning feature on your Smartphone:

- Ensure that your device is connected to the Internet before using Google Map or any GPS-enabled apps.
- For first-time use of a GPS-enabled app on your device, ensure that you are outdoors to get the best positioning data.
- When using a GPS-enabled app on your device inside a vehicle, the metallic component of the car window and other electronic devices might affect the GPS performance.

Safety information

CAUTION: Use of controls or adjustments or performance of procedures other than those specified herein may result in hazardous radiation exposure.

Smartphone care

- Use your Smartphone in an environment with ambient temperatures between 0 °C (32 °F) and 35 °C (95 °F).

WARNING: Disassembling the battery by yourself will void its warranty and may cause serious harm.

Your Smartphone is equipped with a high-performance non-detachable Li-polymer battery. Observe the maintenance guidelines for a longer battery life.

- Do not remove the non-detachable li-polymer battery as this will void the warranty.
- Avoid charging in extremely high or low temperature. The battery performs optimally in an ambient temperature of +5 °C to +35 °C.
- Do not remove and replace the battery with a non-approved battery.

- Use only Smartphone battery. Using a different battery may cause physical harm/injury and may damage your device.
- Do not remove and soak the battery in water or any other liquid.
- Never try to open the battery as it contains substances that might be harmful if swallowed or allowed to come into contact with unprotected skin.
- Do not remove and short-circuit the battery, as it may overheat and cause a fire. Keep it away from jewelry or metal objects.
- Do not remove and dispose of the battery in fire. It could explode and release harmful substances into the environment.
- Do not remove and dispose of the battery with your regular household waste. Take it to a hazardous material collection point.
- Do not touch the battery terminals.
- To avoid fire or burns, do not disassemble, bend, crush, or puncture the battery.

NOTES:

- Risk of explosion if battery is replaced by an incorrect type.
- Dispose of used battery according to the instructions.

The charger

- Use only the charger supplied with your Smartphone.
- Never pull the charger cord to disconnect it from the power socket. Pull the charger itself.

Caution: Your Smartphone is a high quality piece of equipment. Before operating, read all instructions and cautionary markings on the AC Adapter.

- Do not use the Smartphone in an extreme environment where high temperature or high humidity exists. The Smartphone performs optimally in an ambient temperature between 0 °C (32°F) and 35 °C (95 °F).
- Do not disassemble the Smartphone or its accessories. If service or repair is required, return the unit to an authorized service center. If the unit is disassembled, a risk of electric shock or fire may result.
- Do not short-circuit the battery terminals with metal items.

India E-waste (Management) Rules 2016

This product complies with the “India E-Waste (Management) Rules, 2016” and prohibits use of lead, mercury, hexavalent chromium, polybrominated biphenyls (PBBs) and polybrominated diphenyl ethers (PBDEs) in concentrations exceeding 0.1% by weight in homogenous materials and 0.01 % by weight in homogenous materials for cadmium, except for the exemptions listed in Schedule II of the Rule.

India BIS – IS 16333 Notice

Language Input : Hindi, English, Tamil Readability: Assamese, Bangla, Bodo(Boro), Dogri, Gujarati, Hindi, Kannada, Kashmiri, Konkani, Maithili, Malayalam, Manipuri(Bangla), Manipuri(Meetei Mayek), Marathi, Nepali, Oriya, Panjabi, Santhali, Sanskrit, Sindhi (Devanagari) ,Tamil, Telugu, Urdu and English

Operator access with a tool

If a TOOL is necessary to gain access to an OPERATOR ACCESS AREA, either all other compartments within

that area containing a hazard shall be inaccessible to the OPERATOR by the use of the same TOOL, or such compartments shall be marked to discourage OPERATOR access.

Recycling/Takeback Services

Recycling and takeback programs come from our commitment to the highest standards for protecting our environment. We believe in providing solutions for you to be able to responsibly recycle our products, batteries, other components as well as the packaging materials. Please go to <http://csr.asus.com/english/Takeback.htm> for detailed recycling information in different regions.

Proper disposal

- Risk of explosion if battery is replaced by an incorrect type. Dispose of used batteries according to the instructions.
- DO NOT throw the battery in municipal waste. The symbol of the crossed out wheeled bin indicates that the battery should not be placed in municipal waste.
- DO NOT throw this product in municipal waste. This product has been designed to enable proper reuse of parts and recycling. The symbol of the crossed out wheeled bin indicates that the product (electrical, electronic equipment and mercury-containing button cell battery) should not be placed in municipal waste. Check local regulations for disposal of electronic products.
- DO NOT throw this product in fire. DO NOT short circuit the contacts. DO NOT disassemble this product.\

NOTE: For more legal and e-labelling information, check on your device from Settings > System > Regulatory labels.

FCC COMPLIANCE INFORMATION

Responsible Party: Asus Computer International

Address: 48720 Kato Rd, Fremont, CA 94538.

Phone/Fax No: (510)739-3777/(510)608-4555

compliance statement:

This device complies with part 15 of the FCC Rules. Operation is subject to the following two conditions: (1) This device may not cause harmful interference, and (2) this device must accept any interference received, including interference that may cause undesired operation.

We declare that the IMEI codes for this product, Smartphone, are unique to each unit and only assigned to this model. The IMEI of each unit is factory set and cannot be altered by the user and that it complies with the relevant IMEI integrity-related requirements expressed in the GSM standards. Should you have any questions or comments regarding this matter, please contact us. Sincerely yours, ASUSTeK COMPUTER INC. Tel: 886228943447 Fax: 886228907698

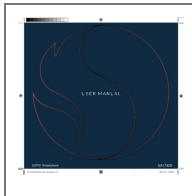
Support: <https://www.asus.com/support/>

Copyright © 2021 ASUSTeK COMPUTER INC. All Rights Reserved. You acknowledge that all rights of this Manual remain with ASUS. Any and all rights, including without limitation, in the Manual or website, and shall remain the exclusive property of ASUS and/or its licensors. Nothing in this Manual intends to transfer any such rights, or to vest any such rights to you.

ASUS PROVIDES THIS MANUAL "AS IS" WITHOUT WARRANTY OF ANY KIND. SPECIFICATIONS AND INFORMATION CONTAINED IN THIS MANUAL ARE FURNISHED FOR INFORMATIONAL USE ONLY, AND ARE SUBJECT TO CHANGE AT ANY TIME WITHOUT NOTICE, AND SHOULD NOT BE CONSTRUED AS A COMMITMENT BY ASUS. [SnapdragonInsiders.com](https://www.snapdragoninsiders.com)



Documents / Resources



[Asustek Computer EXP21 Smartphone](#) [pdf] User Manual
I007D, MSQI007D, EXP21 Smartphone, Smartphone

[Manuals+.](#)