

ASUS ROG Strix Flare II Animate Keyboard User Guide

[Home](#) » [Asus](#) » ASUS ROG Strix Flare II Animate Keyboard User Guide 

Contents

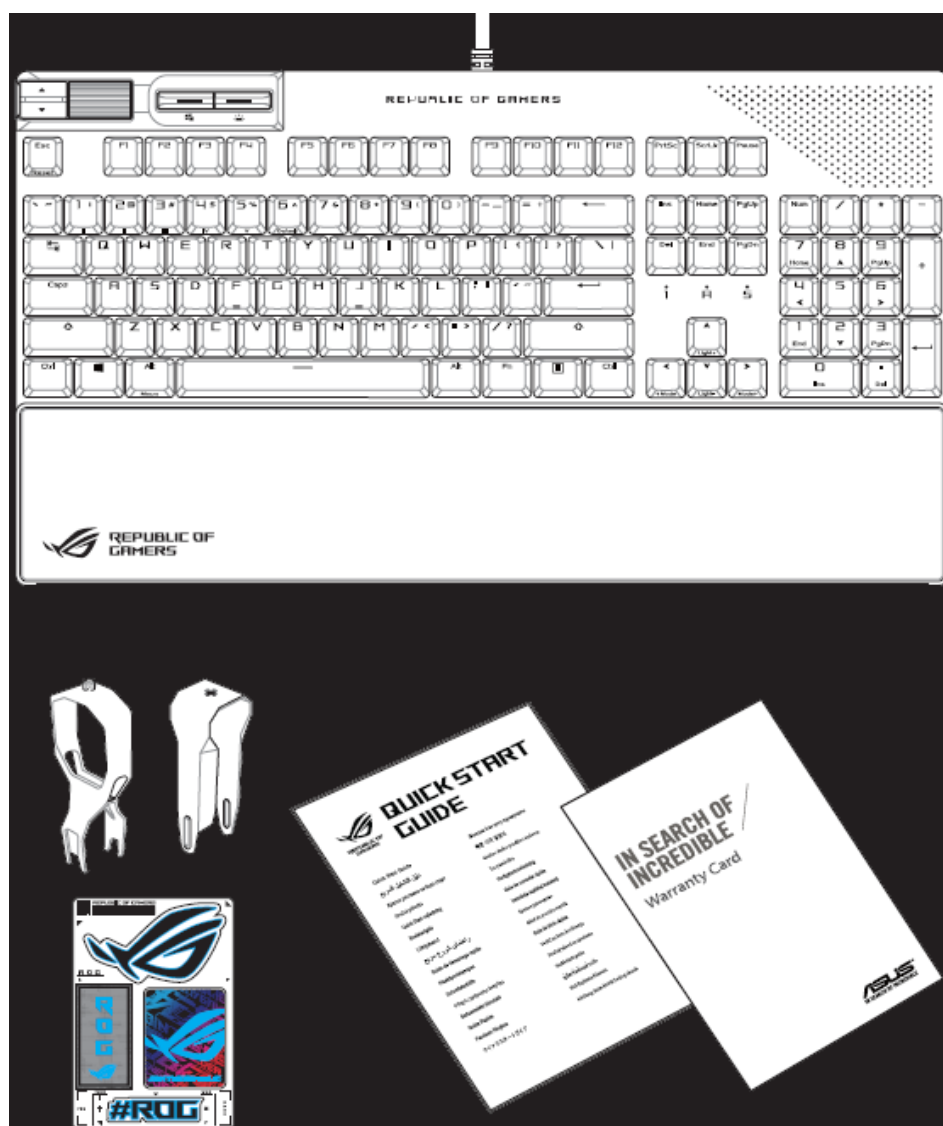
- [1 ASUS ROG Strix Flare II Animate Keyboard](#)
- [2 Package Contents](#)
- [3 Features](#)
- [4 Attaching the wrist rest](#)
- [5 Using the switch puller](#)
- [6 Key combinations](#)
- [7 Profile color and lighting effect mapping list](#)
- [8 Federal Communications Commission Statement](#)
- [9 Compliance Statement of Innovation, Science and Economic](#)
- [10 Documents / Resources](#)
 - [10.1 References](#)
- [11 Related Posts](#)



ASUS ROG Strix Flare II Animate Keyboard



Package Contents



Features

- **A Media control:**
Next/Previous song

- **B Volume control:**

- Up/Down to adjust volume
- Press to mute

- **C Windows Lock:**

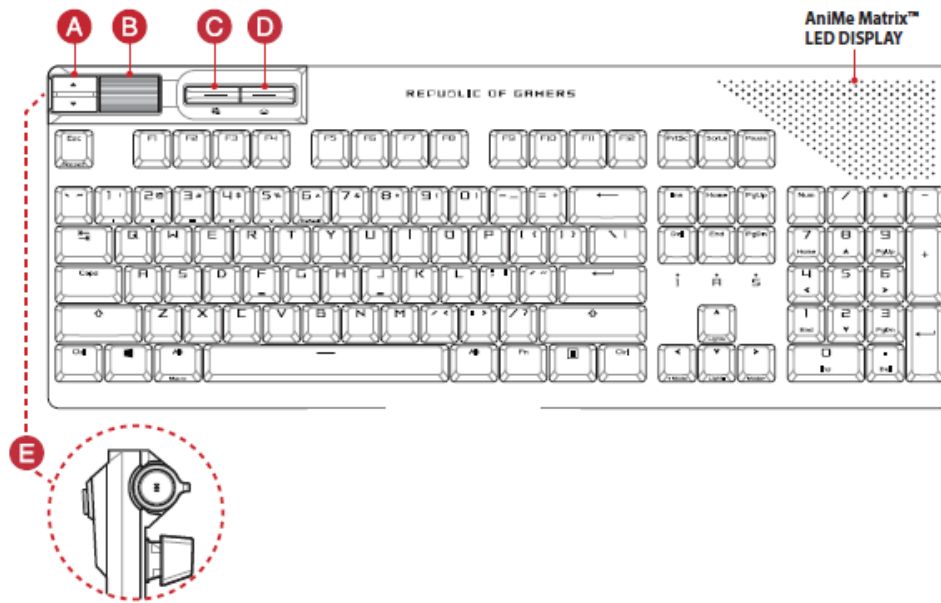
Toggle to enable/disable WIN key

- **D Keyboard LED brightness:**

5 different keyboard LED brightness levels (excluding AniMe Matrix™ LED DISPLAY)

- **E Play/Pause:**

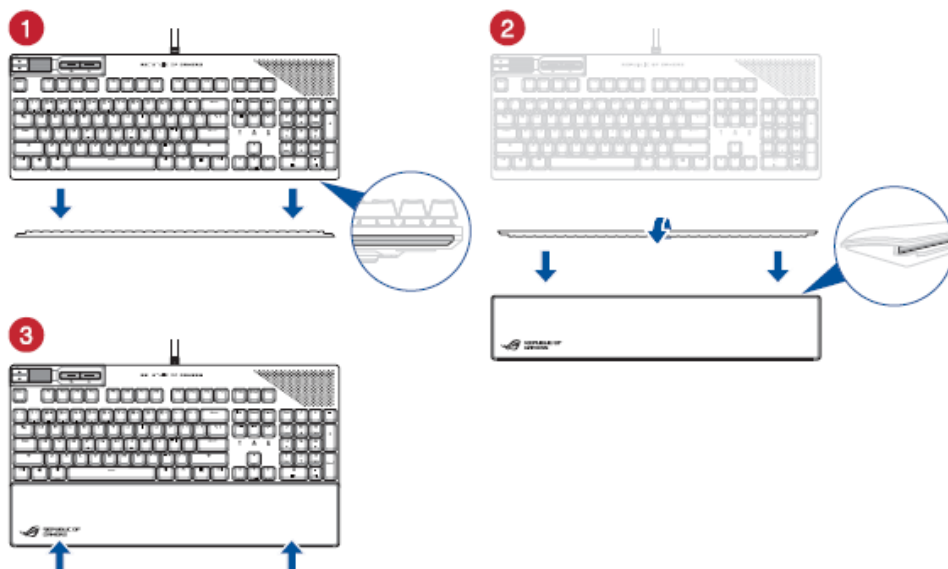
Press to Play/Pause



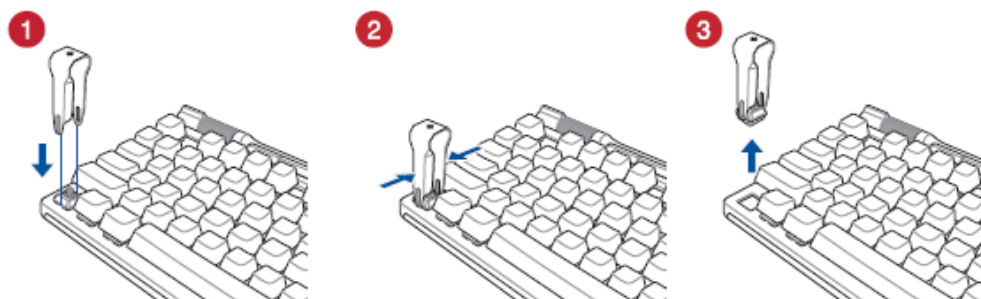
Updating the firmware and customization

1. Connect your keyboard to the PC.
2. Download and install the Armoury Crate software from <https://rog.asus.com>.
3. Follow the software instructions to update your gaming keyboard firmware.
4. Customize your gaming keyboard using Armoury Crate.

Attaching the wrist rest



Using the switch puller



CAUTION! Be careful when removing or replacing the switch; damages to the switch and/or the keyboard due to removing or replacing the switch is not covered by the warranty.

Key combinations

On-the-fly Macro Recording	
Step 1:	Fn + Left-ALT to start recording
Step 2:	Enter the keys to be recorded as a macro
Step 2:	Fn + Left-ALT to end recording
Step 3:	Assign Macro Key
	NOTE: Keys without lighting cannot be assigned as Macro Key, keys in red are already assigned.
Profile Switch	
Fn + 1 / 2 / 3 / 4 / 5 / 6* 6 is default	
Light Effect Switch	
Fn + Right or Fn + Left	
Brightness Level for AniMe Matrix™ LED DISPLAY	
Fn + Up: Brightness up Fn + Down: Brightness down	
Factory Default	
Fn + Esc: Hold these two buttons until the LEDs blink green.	

NOTE: When running AURA SYNC, the hot key related with the lighting effect will be disabled, for example: Profile switch, Lighting effects switch, Brightness level.

Profile color and lighting effect mapping list

Effects and the color	Profile 1 (Red)	Profile 2 (Purple)	Profile 3 (Blue)	Profile 4 (Green)	Profile 5 (Yellow)	Default Profile
Static	Red	Purple	Blue	Green	Yellow	White
Breathing	Red	Purple	Blue	Green	Yellow	White
Color Cycle	Multi-color	Multi-color	Multi-color	Multi-color	Multi-color	Multi-color
Rainbow	Multi-color	Multi-color	Multi-color	Multi-color	Multi-color	Multi-color
Ripple	Red	Purple	Blue	Green	Yellow	Random color
Reactive	Red	Purple	Blue	Green	Yellow	Random color
Starry Night	Red	Purple	Blue	Green	Yellow	Random color
Quicksand	Red	Purple	Blue	Green	Yellow	Random color
Current	Red	Purple	Blue	Green	Yellow	Random color
Rain Drop	Red	Purple	Blue	Green	Yellow	Random color

Federal Communications Commission Statement

This device complies with Part 15 of the FCC Rules. Operation is subject to the following two conditions:

1. This device may not cause harmful interference.
2. This device must accept any interference received including interference that may cause undesired operation.

This equipment has been tested and found to comply with the limits for a Class B digital device, pursuant to Part 15 of the FCC Rules. These limits are designed to provide reasonable protection against harmful interference in a residential installation.

This equipment generates, uses and can radiate radio frequency energy and, if not installed and used in accordance with manufacturer's instructions, may cause harmful interference to radio communications. However, there is no guarantee that interference will not occur in a particular installation. If this equipment does cause harmful interference to radio or television reception, which can be determined by turning the equipment off and on, the user is encouraged to try to correct the interference by one or more of the following measures:

- Reorient or relocate the receiving antenna.
- Increase the separation between the equipment and receiver.
- Connect the equipment to an outlet on a circuit different from that to which the receiver is connected.
- Consult the dealer or an experienced radio/TV technician for help.

CAUTION! The use of shielded cables for connection of the monitor to the graphics card is required to assure compliance with FCC regulations. Changes or modifications to this unit not expressly approved by the party responsible for compliance could void the user's authority to operate this equipment.

Compliance Statement of Innovation, Science and Economic


Development Canada (ISED)

This device complies with Innovation, Science, and Economic Development Canada licence exempt RSS standard(s).

Operation is subject to the following two conditions:

1. this device may not cause interference, and
2. this device must accept any interference, including interference that may cause undesired operation of the device.

Documents / Resources

	ASUS ROG Strix Flare II Animate Keyboard [pdf] User Guide ROG Strix Flare II Animate Keyboard, Flare II Animate Keyboard, ROG Strix Animate Keyboard , Animate Keyboard, Keyboard
---	--

References

- [Official Support | ASUS Global](#)
- [ASUS ESG website, ASUS ESG goal](#)
- [Global Take Back Service | Resource Regeneration | Circular Economy | ASUS ESG website, ASUS ESG goal](#)
- [ASUS ROG Strix Flare II Animate Keyboard \[pdf\] User Guide](#)

- [🔗 Official Support | ASUS Global](#)
- [🌐 ASUS Đ² Đ;ĐĐ“](#)
- [🔥 ROG - Republic of Gamers Global | For Those Who Dare](#)
- [🔥 ROG - Republic of Gamers Global | For Those Who Dare](#)
- [🔗 Official Support | ASUS Global](#)

Manuals+.