



ASUS G Series External Graphics Extender User Guide

[Home](#) » [Asus](#) » ASUS G Series External Graphics Extender User Guide 

Contents

- [1 ASUS G Series External Graphics Extender](#)
- [2 Product Information](#)
- [3 Product Usage Instructions](#)
- [4 Safety Notices](#)
- [5 Overview](#)
- [6 Getting started](#)
- [7 Safety notices for your ROG XG Mobile](#)
- [8 Copyright Information](#)
- [9 Limitation of Liability](#)
- [10 Coating Notice](#)
- [11 Simplified EU Declaration of Conformity](#)
- [12 FCC](#)
- [13 Documents / Resources](#)
 - [13.1 References](#)
- [14 Related Posts](#)



ASUS G Series External Graphics Extender



Product Information

The ROG XG Mobile is an external graphics card dock that allows you to enhance the graphics performance of your Notebook PC. It comes with a power connector, LAN port, HDMI output port, DisplayPort, memory card reader, air vents, and a status indicator.

The dock supports devices that have ROG XG Mobile interface.

Product Usage Instructions

Connecting the ROG XG Mobile

1. Plug the bundled AC power cord into the power connector of your ROG XG Mobile.
2. Plug your ROG XG Mobile into a 100V~240V power source.
3. Plug the ROG XG Mobile connector into your Notebook PC's ROG XG Mobile interface.
4. Once you see the status indicator on the ROG XG Mobile connector turns white, push the unlock switch to lock the connector.
5. In the pop-up Settings window, activate the ROG XG Mobile. The status indicator turns red when the activation is complete.

Removing the ROG XG Mobile

1. Left or right-click in the notification area (the right end of the taskbar) and deactivate the ROG XG Mobile in the Settings window.
2. When the status indicator on the ROG XG Mobile connector turns white, push the unlock switch to unlock the connector.
3. Press the release clips on both sides of the ROG XG Mobile connector to remove your ROG XG Mobile from

your Notebook PC.

Safety Notices

The input voltage of the ROG XG Mobile is 100-240Vac, the input frequency is 50-60Hz, the rating output current is 6.5A (130W), and the rating output voltage is 20V. The device has a coating applied to insulate the device except on the areas where the I/O ports are located.

ASUS provides this manual “as is” without warranty of any kind. Specifications and information contained in this manual are furnished for informational use only, and are subject to change at any time without notice, and should not be construed as a commitment by ASUS.

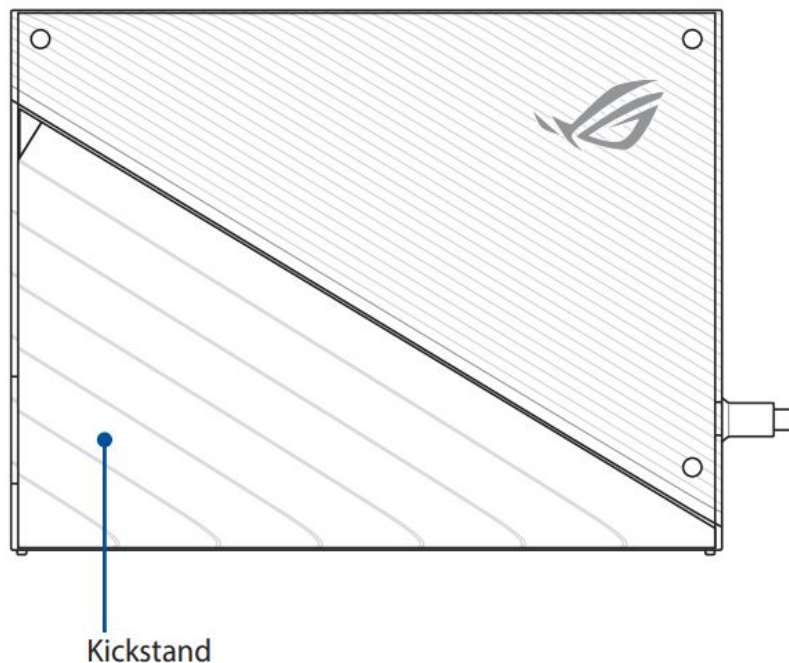
Under no circumstances is ASUS liable for any third-party claims against you for damages, loss of, or damage to your records or data, or special, incidental, or indirect damages or for any economic consequential damages (including lost profits or savings), even if ASUS, its suppliers or your reseller is informed of their possibility.

Overview

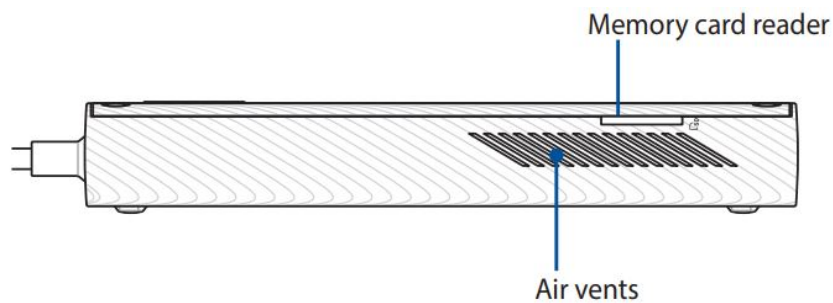
Front View



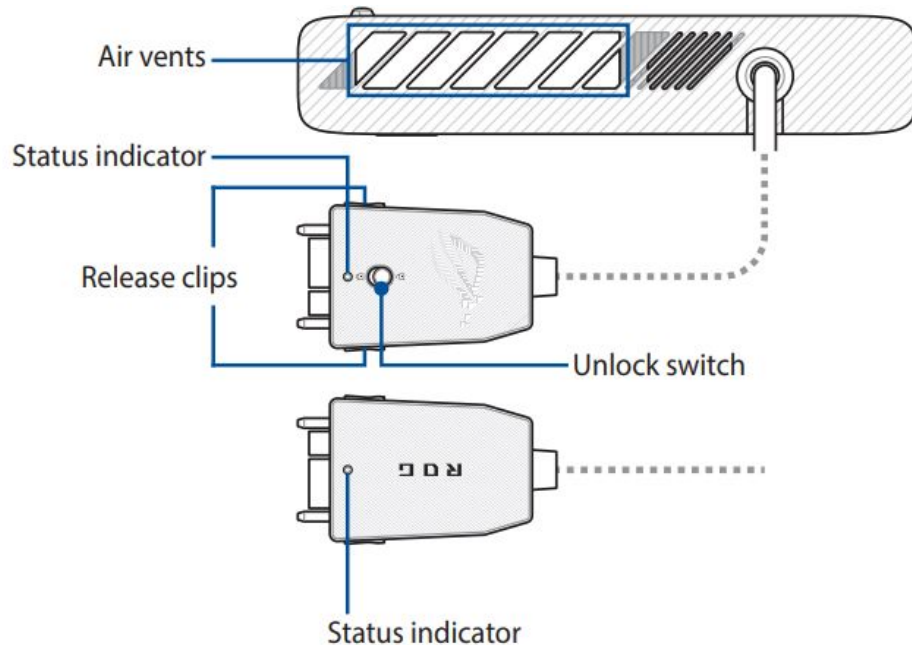
Rear View



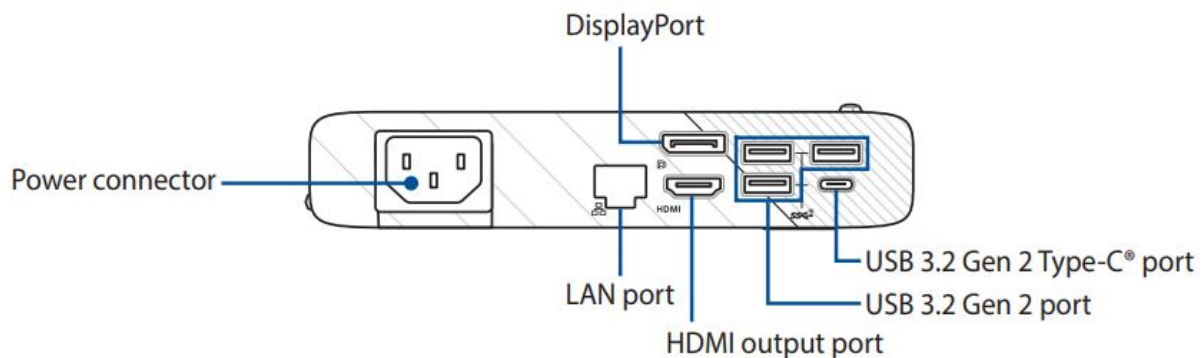
Top View



Left View (with ROG XG Mobile connector)



Right View




Getting started

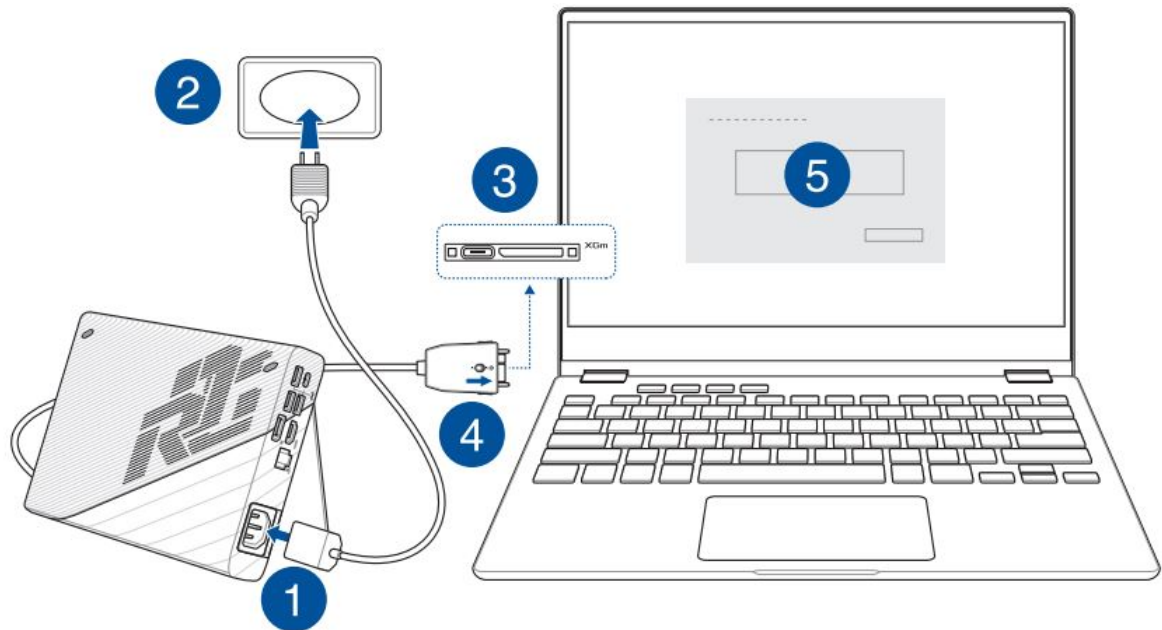
IMPORTANT! Follow the instructions and ensure to save all data and stop applications that are using the current GPU before switching the GPUs.

NOTE: For more information on devices supporting the ROG XG Mobile, please visit the ROG official website.



Connect your ROG XG Mobile

1. Plug the bundled AC power cord into the power connector of your ROG XG Mobile.
2. Plug your ROG XG Mobile into a 100V~240V power source.
3. Plug the ROG XG Mobile connector into your Notebook PC's ROG XG Mobile interface and USB Type-C® combo port.

4. Once you see the status indicator on the ROG XG Mobile connector turns white, push the unlock switch to  to lock the connector.
5. In the pop-up Settings window, activate the ROG XG Mobile. The status indicator turns red when the activation is complete.



Remove your ROG XG Mobile

1. Left or right-click  in the notification area (the right end of the taskbar) and deactivate the ROG XG Mobile in the Settings window.
2. When the status indicator on the ROG XG Mobile connector turns white, push the unlock switch to  to unlock the connector.
3. Press the release clips on both sides of the ROG XG Mobile connector to remove your ROG XG Mobile from your Notebook PC.

Safety notices for your ROG XG Mobile

WARNING!

- This device is not suitable for use in locations where children are likely to be present.
- This device is not a toy. Keep out of reach of children.
- For your safety, connect this device to a properly grounded electrical outlet only.

IMPORTANT!

- Never attempt to disassemble and reassemble the product.
- This product should only be used in environments with ambient temperatures between 5°C (41°F) and 35°C (95°F).
- Power supply specifications:

- **Input voltage:** 100-240Vac
- **Input frequency:** 50-60Hz
- **Rating output current:** 6.5A (130W)
- **Rating output voltage:** 20V

Copyright Information

You acknowledge that all rights of this Manual remain with ASUS. Any and all rights, including without limitation, in the Manual or website, are and shall remain the exclusive property of ASUS and/or its licensors. Nothing in this Manual intends to transfer any such rights, or to vest any such rights to you.

ASUS PROVIDES THIS MANUAL "AS IS" WITHOUT WARRANTY OF ANY KIND. SPECIFICATIONS AND INFORMATION CONTAINED IN THIS MANUAL ARE FURNISHED FOR INFORMATIONAL USE ONLY, AND ARE SUBJECT TO CHANGE AT ANY TIME WITHOUT NOTICE, AND SHOULD NOT BE CONSTRUED AS A COMMITMENT BY ASUS.

Copyright © 2023 ASUSTeK COMPUTER INC. All Rights Reserved.

Limitation of Liability

Circumstances may arise where because of a default on ASUS' part or other liability, you are entitled to recover damages from ASUS. In each such instance, regardless of the basis on which you are entitled to claim damages from ASUS, ASUS is liable for no more than damages for bodily injury (including death) and damage to real property and tangible personal property; or any other actual and direct damages resulted from omission or failure of performing legal duties under this Warranty Statement, up to the listed contract price of each product. ASUS will only be responsible for or indemnify you for loss, damages or claims based in contract, tort or infringement under this Warranty Statement.

This limit also applies to ASUS' suppliers and its reseller. It is the maximum for which ASUS, its suppliers, and your reseller are collectively responsible.

UNDER NO CIRCUMSTANCES IS ASUS LIABLE FOR ANY OF THE FOLLOWING: (1) THIRD-PARTY CLAIMS AGAINST YOU FOR DAMAGES; (2) LOSS OF, OR DAMAGE TO, YOUR RECORDS OR DATA; OR (3) SPECIAL, INCIDENTAL, OR INDIRECT DAMAGES OR FOR ANY ECONOMIC CONSEQUENTIAL DAMAGES (INCLUDING LOST PROFITS OR SAVINGS), EVEN IF ASUS, ITS SUPPLIERS OR YOUR RESELLER IS INFORMED OF THEIR POSSIBILITY.

UL Safety Notices

- DO NOT use the External Graphics Extender near water, for example, near a bath tub, wash bowl, kitchen sink or laundry tub, in a wet basement or near a swimming pool.
- DO NOT use the External Graphics Extender during an electrical storm. There may be a remote risk of electric shock from lightning.
- DO NOT use the External Graphics Extender in the vicinity of a gas leak.

Coating Notice

IMPORTANT! To provide electrical insulation and maintain electrical safety, a coating is applied to insulate the device except on the areas where the I/O ports are located.

Vietnam RoHS

ASUS products sold in Vietnam, on or after September 23, 2011, meet the requirements of the Vietnam Circular 30/2011/TT-BCT.

Các sản phẩm ASUS bán tại Việt Nam, vào ngày 23 tháng 9 năm 2011 trở về sau, đều phải đáp ứng các yêu cầu của Thông tư 30/2011/TT-BCT của Việt Nam.

India RoHS

This product complies with the “India E-Waste (Management) Rules, 2016” and prohibits use of lead, mercury, hexavalent chromium, polybrominated biphenyls (PBBs) and polybrominated diphenyl ethers (PBDEs) in concentrations exceeding 0.1% by weight in homogenous materials and 0.01% by weight in homogenous materials for cadmium, except for the exemptions listed in Schedule II of the Rule.

Simplified EU Declaration of Conformity

ASUSTek Computer Inc. hereby declares that this device is in compliance with the essential requirements and other relevant provisions of Directive 2014/53/EU. Full text of EU declaration of conformity is available at <https://www.asus.com/support/>.

Simplified UKCA Declaration of Conformity

ASUSTek Computer Inc. hereby declares that this device is in compliance with the essential requirements and other relevant provisions of The Radio Equipment Regulations 2017 (S.I. 2017/1206). Full text of UKCA declaration of conformity is available at <https://www.asus.com/support/>.

FCC

This equipment has been tested and found to comply with the limits for a Class B digital device, pursuant to part 15 of the FCC Rules. These limits are designed to provide reasonable protection against harmful interference in a residential installation. This equipment generates, uses and can radiate radio frequency energy and, if not installed and used in accordance with the instructions, may cause harmful interference to radio communications. However, there is no guarantee that interference will not occur in a particular installation. If this equipment does cause harmful interference to radio or television reception, which can be determined by turning the equipment off and on, the user is encouraged to try to correct the interference by one or more of the following measures:

- Reorient or relocate the receiving antenna.
- Increase the separation between the equipment and receiver.
- Connect the equipment into an outlet on a circuit different from that to which the receiver is connected.
- Consult the dealer or an experienced radio/TV technician for help.

FCC COMPLIANCE INFORMATION

Per FCC Part 2 Section 2.1077

Responsible Party: Asus Computer International

Address: 48720 Kato Rd., Fremont, CA 94538

Phone/Fax No: (510)739-3777/(510)608-4555

hereby declares that the product

Product Name : External Graphics Extender

Model Number : GC33 (GC33Y, GC33Z)

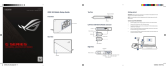
compliance statement:

This device complies with part 15 of the FCC Rules. Operation is subject to the following two conditions: (1) This device may not cause harmful interference, and (2) this device must accept any interference received, including interference that may cause undesired operation.

More info:



Documents / Resources

	ASUS G Series External Graphics Extender [pdf] User Guide G Series External Graphics Extender, G Series, External Graphics Extender, Graphics Extender, Extender
---	---

References

- [Official Support | ASUS Global](#)