



astro Minima Round LED Downlight Textured Installation Guide

[Home](#) » [Astro](#) » astro Minima Round LED Downlight Textured Installation Guide 

astro Minima Round LED Downlight Textured



Contents

- [1 Important Informations](#)
- [2 Safety Precautions](#)
- [3 Tools](#)
- [4 Assembly Instructions](#)
- [5 Documents / Resources](#)
 - [5.1 References](#)

Important Informations

Prx:lucts with electronic ballasts/ drivers must not be installed on the some electrical circuits as prx:lucts with inductive loads, for example magnetic fluorescent luminaires, motors or ventilators. Inductive loads con generate excessive voltage surges which con damage electronic ballasts.

This prx:luct contains a light source of energy efficiency doss Oto Regulation (EU) No 2019/2015 (01/09/2021). The light source of this luminaire is not replaceable; when the light source reaches its end of life the whole luminaire shall be replaced.

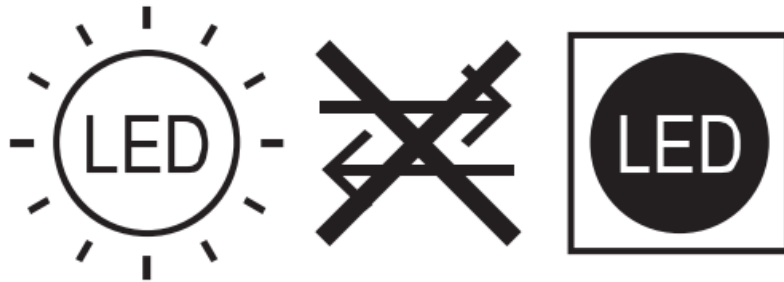
Please read the instructions carefully before commencing assembly

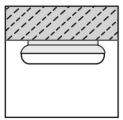
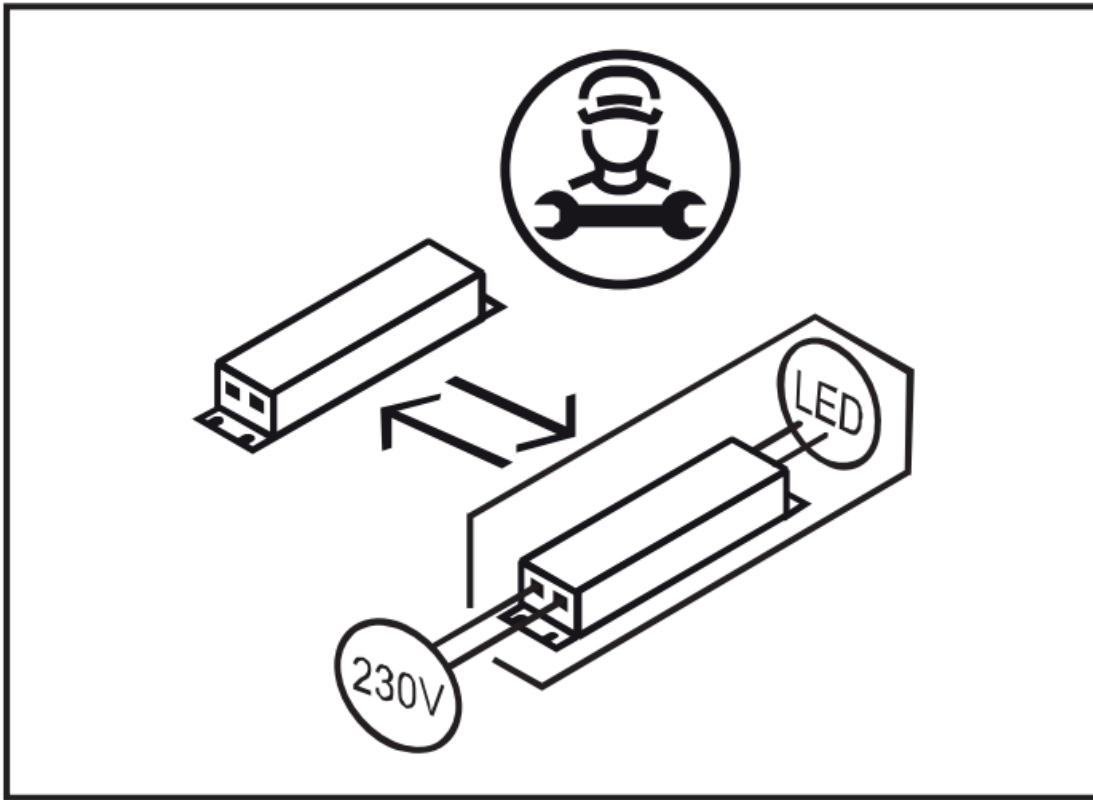
Live: Normally Brown/ Red

Neutral: Normally Blue/ Block

Earth: Normally Green /Yellow

Safety Precautions



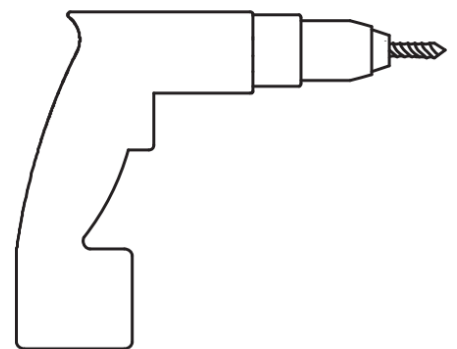
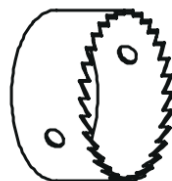
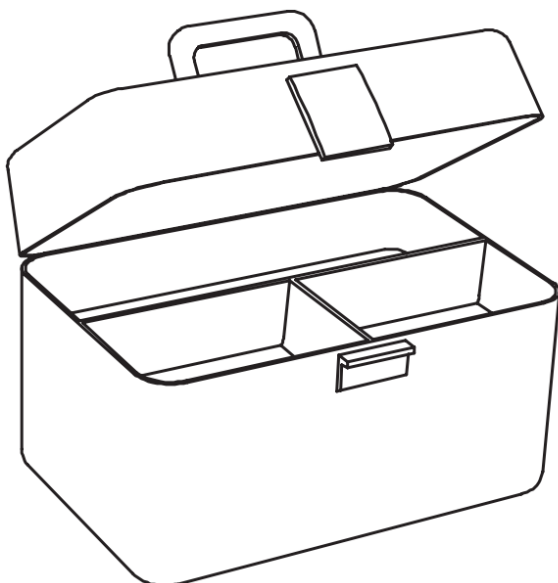


For Ceiling Use Only



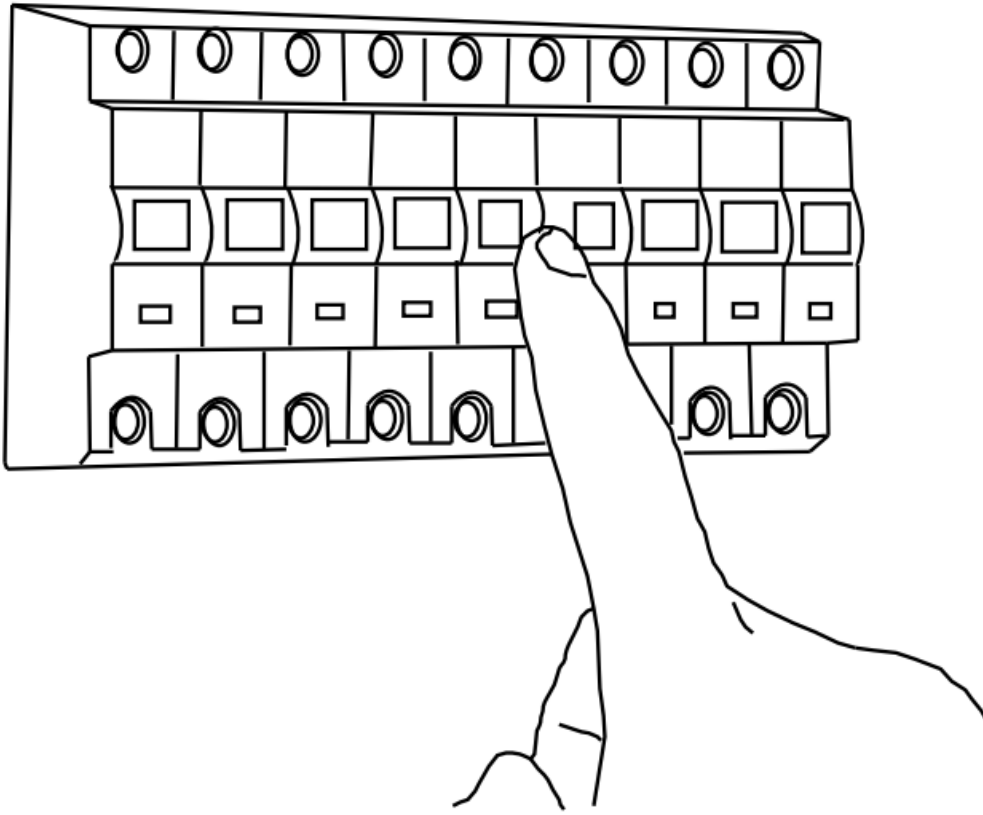
Please refer to the “**LED Drivers**” guide.

Tools



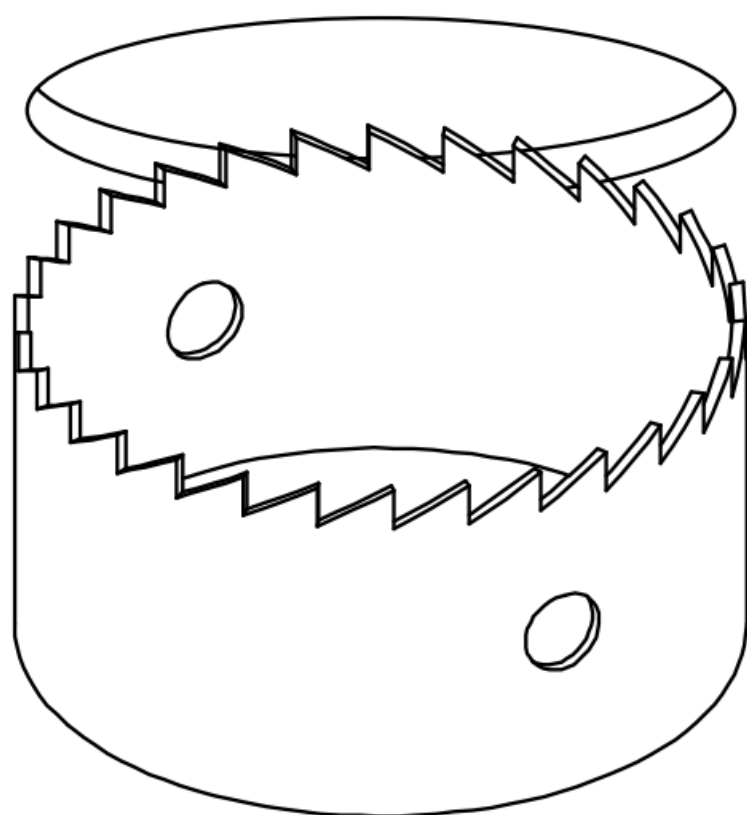
Assembly Instructions

1



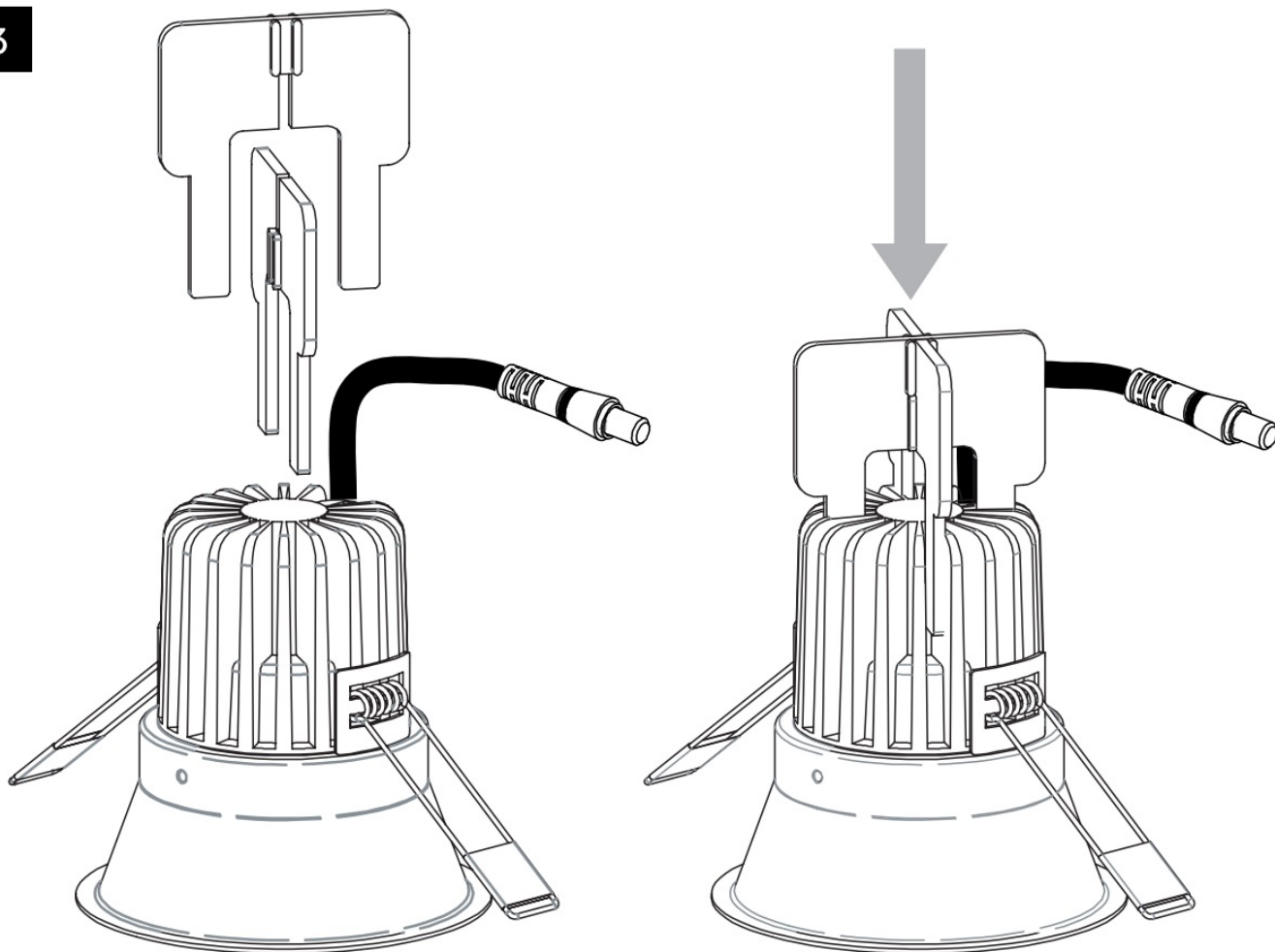
Turn Off Power

2

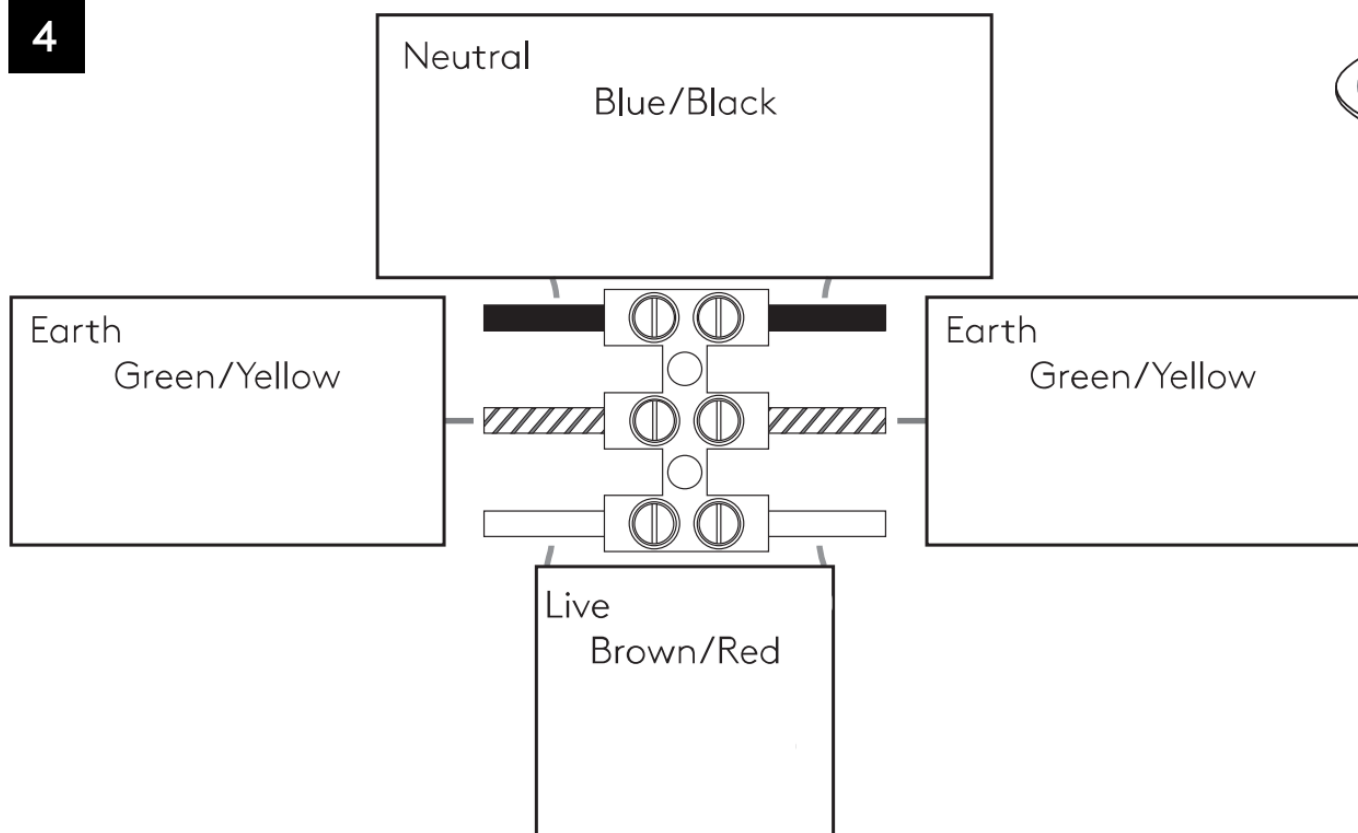


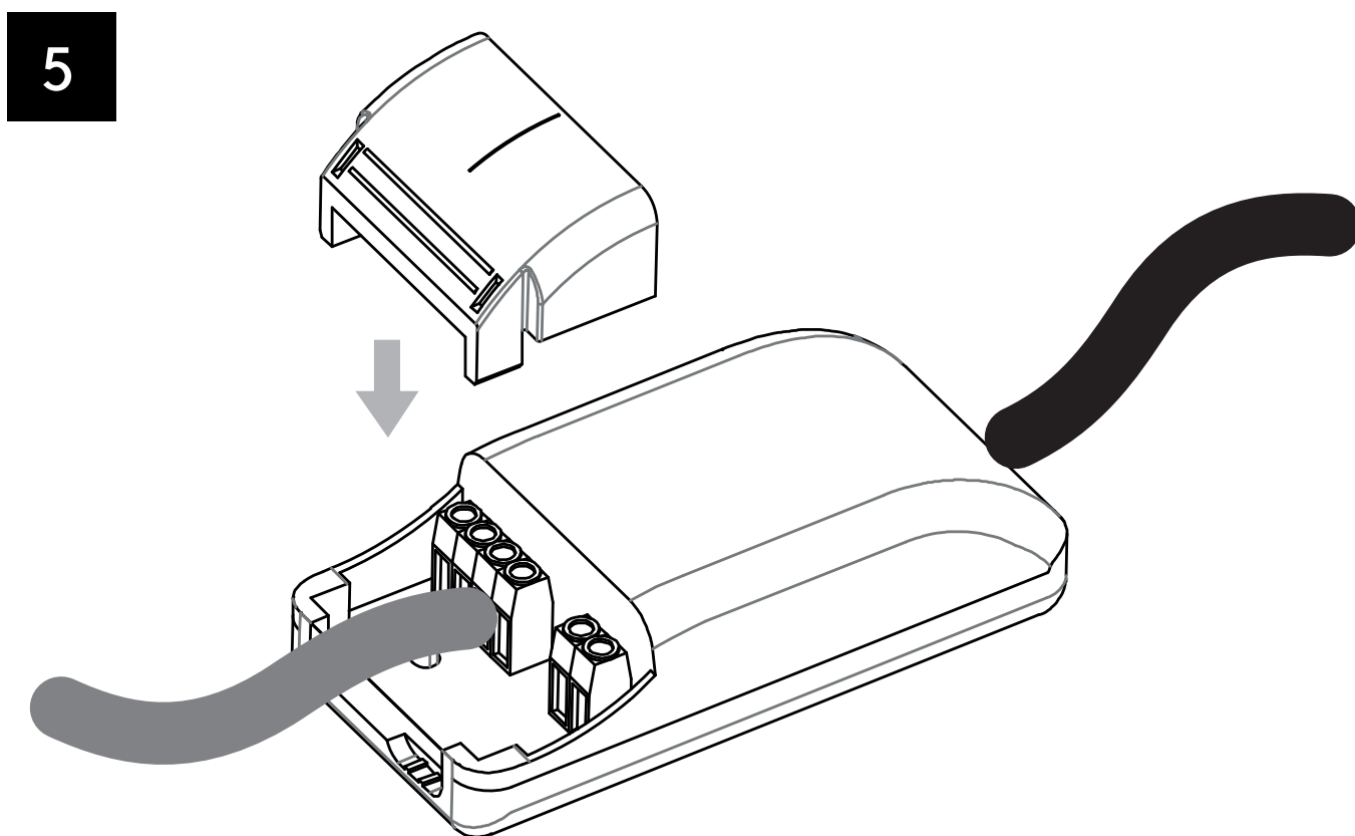
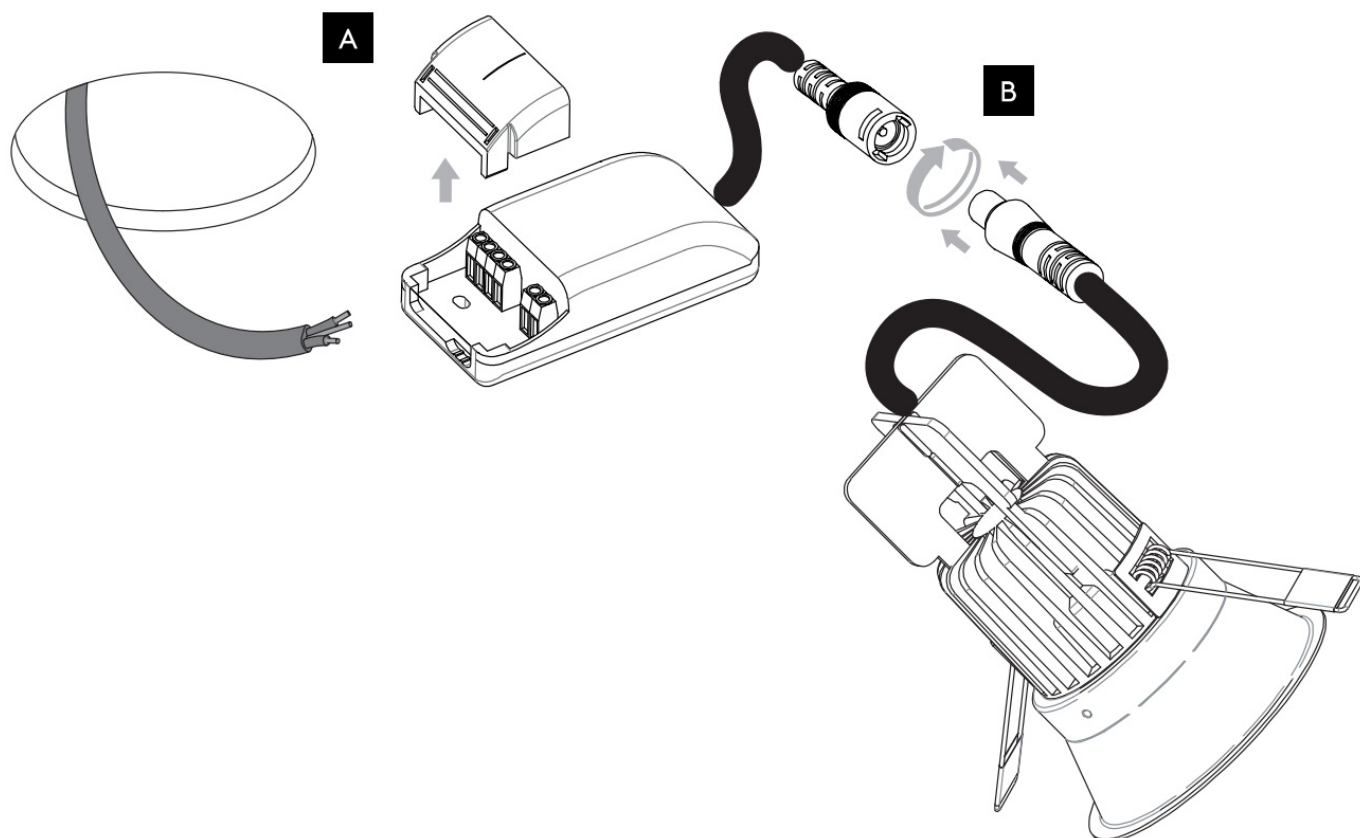
Ø 86mm / 3-3/8in

3

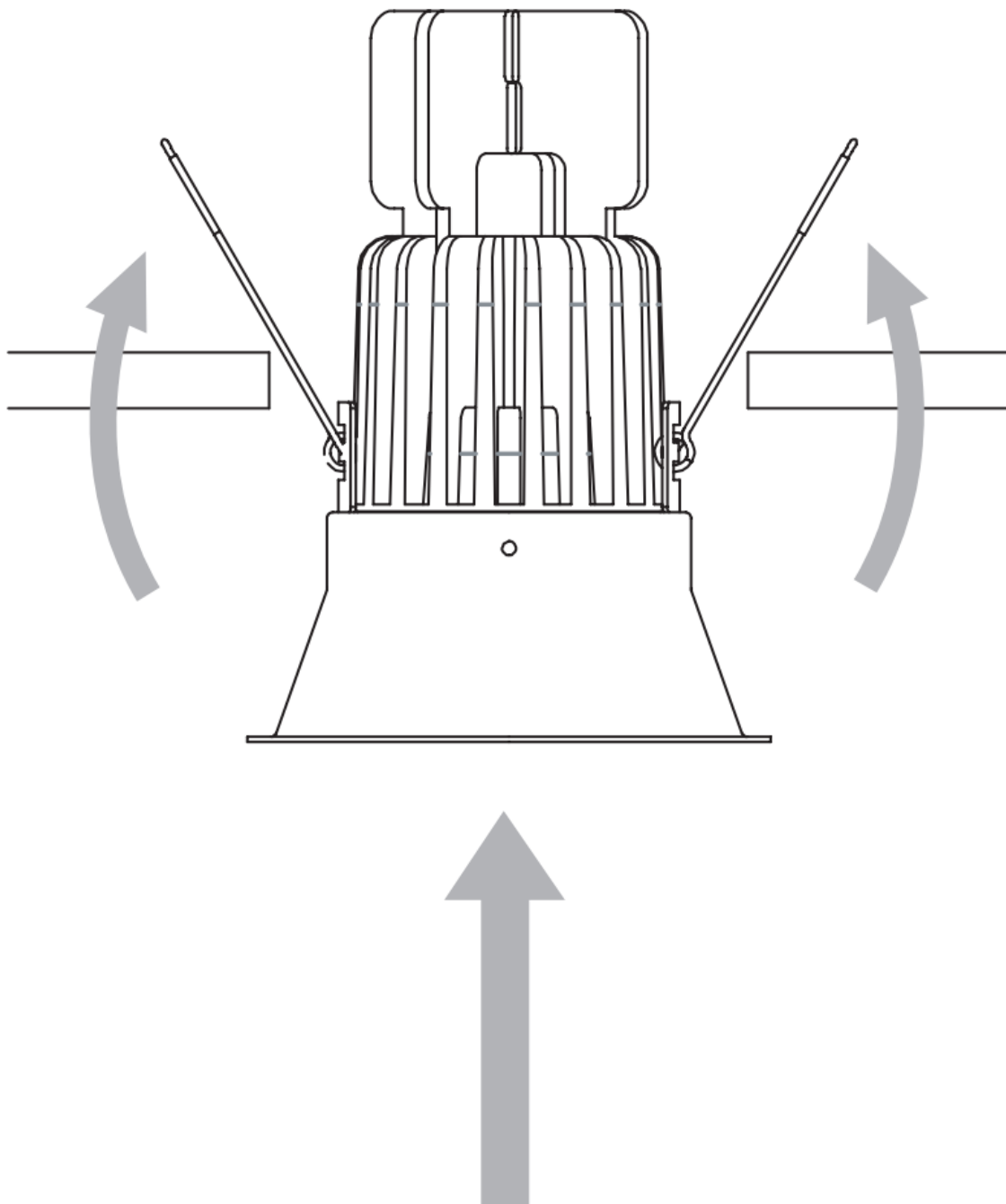


4

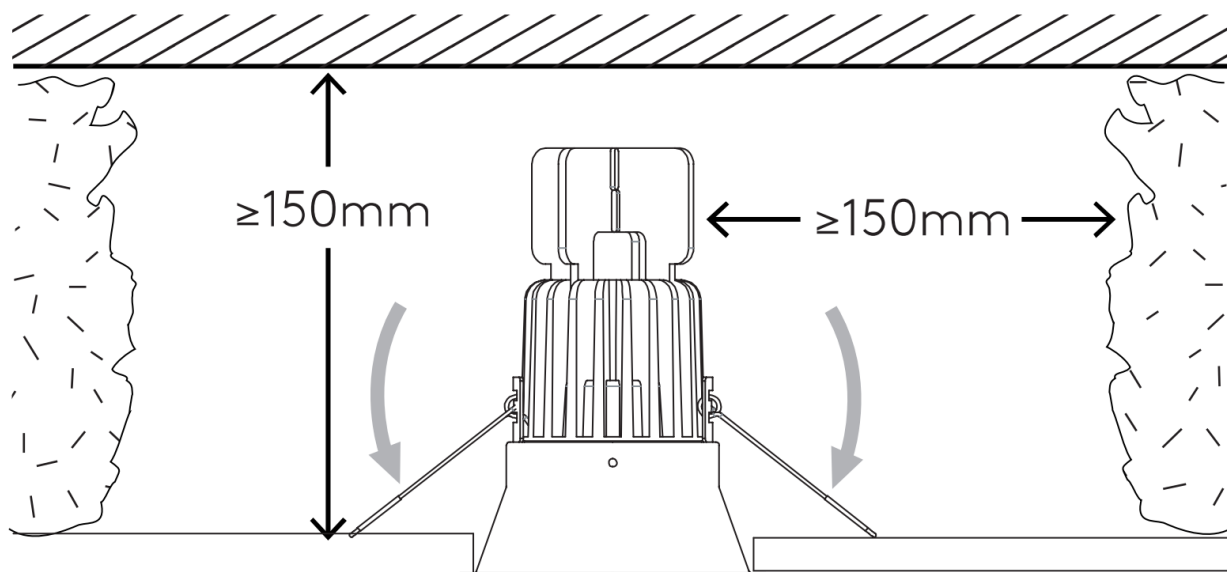




6




7



astro

Documents / Resources

	<p>astro Minima Round LED Downlight Textured [pdf] Installation Guide Minima Round LED Downlight Textured, Minima, Round LED Downlight Textured, LED Downlight Textured, Downlight Textured</p>
---	---

References

- [User Manual](#)

[Manuals+](#), [Privacy Policy](#)

This website is an independent publication and is neither affiliated with nor endorsed by any of the trademark owners. The "Bluetooth®" word mark and logos are registered trademarks owned by Bluetooth SIG, Inc. The "Wi-Fi®" word mark and logos are registered trademarks owned by the Wi-Fi Alliance. Any use of these marks on this website does not imply any affiliation with or endorsement.