

Contents [[hide](#)]

[1 ASTRAL CS15X18 Siphon Box](#)

[2 INSTALLATION](#)

[3 CLEANING](#)

[4 FAQ](#)

[5 Documents / Resources](#)

[5.1 References](#)

ASTRAL

ASTRAL CS15X18 Siphon Box



Product Specifications

- Product Name: Catch Basin

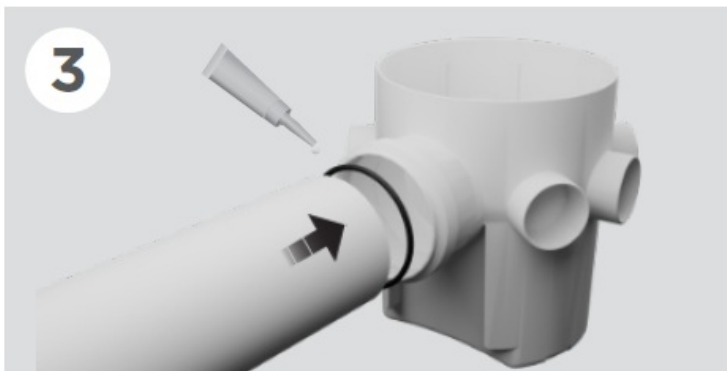
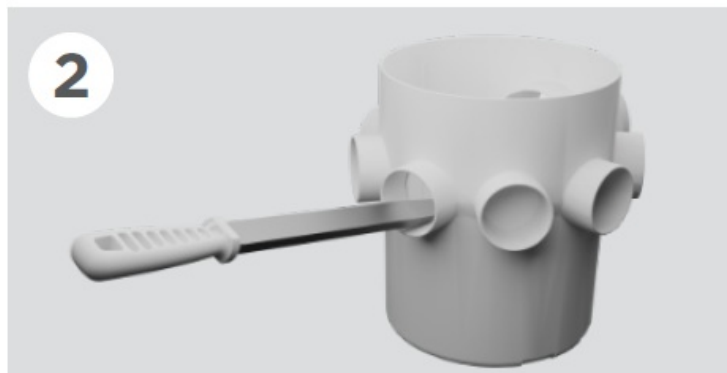
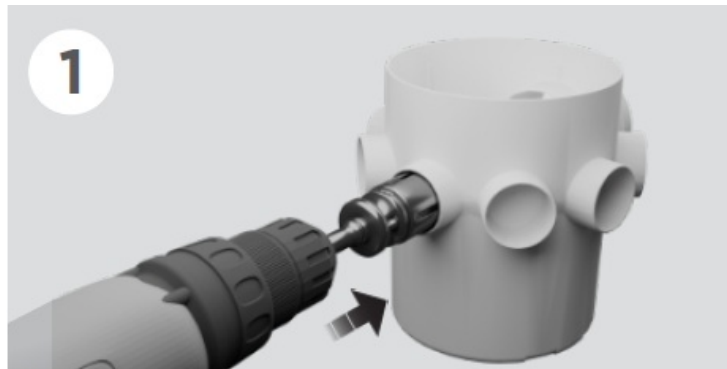
- Material: PVC
- Color: White
- Dimensions: Varies
- Additional Component: Sealing Ring (sold separately)

INSTALLATION

1. Cut the sealed inlets of the box using a hole saw or an appropriate tool.
2. Remove burrs with a file or fine sandpaper.
3. On the inlet, apply PVC glue to the ends of the pipes and insert them firmly.

On the outlet, use a sealing ring* or glue.

To ease installation, apply lu-bricant oil or petroleum jelly to the ring before fitting.



Sold separately

EXTENDER

To increase the height of Ø 15 cm siphon boxes, use a 150 mm (6-inch) sewer pipe cut to the desired height.

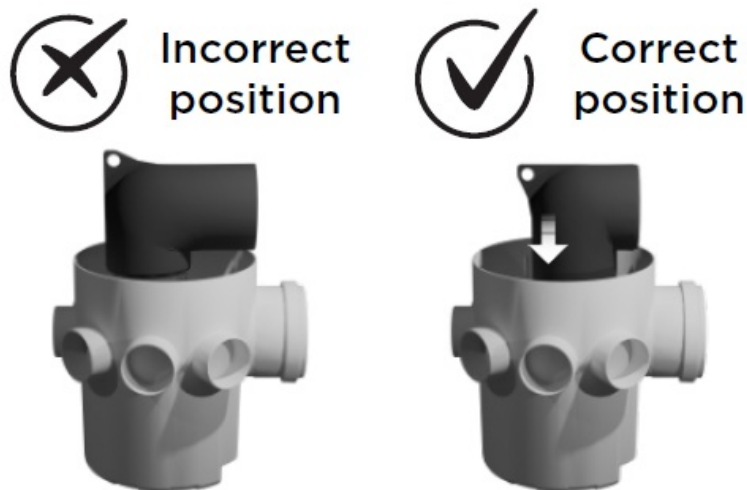
CLEANING

To clean and inspect the drainage system, remove the water trap by pulling it back for easier cleaning.



ATTENTION:

The use of the catch basin does not eliminate the need for a water trap in the installation.




FAQ

- **Q: Can I use the catch basin without a water trap?**
 - A: No, the catch basin does not eliminate the need for a water trap in the installation. It is essential to have a water trap for proper drainage system functioning.
- **Q: Do I need to purchase the sealing ring separately?**

- A: Yes, the sealing ring is sold separately and is necessary for securing the outlet of the catch basin. Ensure you have it before installation.

Documents / Resources



CAIXA SIFONADA

INSTALAÇÃO

1. Corte as pontas da rede de esgoto de acordo com o comprimento necessário.
2. Encaixe a caixa CS15X18 com uma fôrca de madeira.
3. Se a rede não estiver alinhada com a caixa, use o suporte de madeira para alinhá-la.
4. Se a rede estiver alinhada com a caixa, use o suporte de madeira para alinhá-la.

PROLONGADOR

Se a rede não estiver alinhada com a caixa, use o prolongador para alinhá-la.

LIMPEZA

Se a caixa não estiver alinhada com a rede, use a limpeza para alinhá-la.

ATENÇÃO:

Se a rede não estiver alinhada com a caixa, use o prolongador para alinhá-la.

ASTRAL CS15X18 Siphon Box [pdf] Installation Guide

CS15X18, CS15X18 COMEX, CS15X18 Siphon Box, CS15X18, Siphon Box, Box

References

- User Manual

◆ ASTRAL, box, CS15X18, CS15X18 COMEX, CS15X18 Siphon Box, Siphon

ASTRAL Box

Leave a comment

Your email address will not be published. Required fields are marked *

Comment *

Name

Email

Website

☐ Save my name, email, and website in this browser for the next time I comment.

Post Comment

Search:

e.g. whirlpool wrf535swhz

Search

[Manuals+](#) | [Upload](#) | [Deep Search](#) | [Privacy Policy](#) | [@manuals.plus](#) | [YouTube](#)

This website is an independent publication and is neither affiliated with nor endorsed by any of the trademark owners. The "Bluetooth®" word mark and logos are registered trademarks owned by Bluetooth SIG, Inc. The "Wi-Fi®" word mark and logos are registered trademarks owned by the Wi-Fi Alliance. Any use of these marks on this website does not imply any affiliation with or endorsement.