



ASTRA AXI238001 Lcxu Dig Conversion Kit Instruction Manual

[Home](#) » [ASTRA](#) » ASTRA AXI238001 Lcxu Dig Conversion Kit Instruction Manual 

Contents

- [1 ASTRA AXI238001 Lcxu Dig Conversion Kit](#)
- [2 Product Information](#)
- [3 Product Usage Instructions](#)
- [4 MEANING OF SPECIAL LANGUAGE](#)
- [5 SAFETY PRECAUTIONS AND WARNINGS](#)
- [6 TOOLS REQUIRED](#)
- [7 ASSEMBLY](#)
- [8 Rear Driveshaft ReassemblyDRIVESHAFT CONFIGURATIONS](#)
- [9 PARTS](#)
- [10 LIMITED WARRANTY](#)
- [11 Inspection or Services](#)
- [12 WARRANTY AND SERVICE CONTACT INFORMATION](#)
- [13 Documents / Resources](#)
 - [13.1 References](#)



ASTRA AXI238001 Lcxu Dig Conversion Kit



Product Information

- **Product Name:** LCXU DIG CONVERSION KIT
- **Model Number:** AXI238001
- **Manufacturer:** Horizon Hobby, LLC
- **Age Recommendation:** Not for children under 14 years. This is not a toy.

Product Usage Instructions

1. Ensure you are operating the product in a manner that does not endanger yourself, or others, or result in damage to the product or property of others.
2. Keep a safe distance in all directions around the model to avoid collisions or injury due to momentary loss of control caused by interference from external sources.
3. Scan the QR code and visit the product page on horizonhobby.com or towerhobbies.com for the most up-to-date manual information.
4. Follow the assembly steps below:
 1. Remove the spur gear cover and motor.
 2. Remove the transmission cover and output gear assembly.
 3. Assemble the output shaft and transmission cover.
 4. Assemble the dig servo.

Please refer to the user manual for detailed instructions, diagrams, and part numbers for each assembly step.

NOTICE: All instructions, warranties and other collateral documents are subject to change at the sole discretion of Horizon Hobby, LLC. For up-to-date product literature, visit horizonhobby.com or towerhobbies.com and click on the support or resources tab for this product.

MEANING OF SPECIAL LANGUAGE

The following terms are used throughout the product literature to indicate various levels of potential harm when

operating this product:

- **WARNING:** Procedures, which if not properly followed, create the probability of property damage, collateral damage, and serious injury OR create a high probability of superficial injury.
- **CAUTION:** Procedures, which if not properly followed, create the probability of physical property damage AND a possibility of serious injury.
- **NOTICE:** Procedures, which if not properly followed, create a possibility of physical property damage AND a little or no possibility of injury.
- **WARNING:** Read the ENTIRE instruction manual to become familiar with the features of the product before operating. Failure to operate the product correctly can result in damage to the product, personal property and cause serious injury. This is a sophisticated hobby product. It must be operated with caution and common sense and requires some basic mechanical ability. Failure to operate this Product in a safe and responsible manner could result in injury or damage to the product or other property. This product is not intended for use by children without direct adult supervision. Do not use with incompatible components or alter this product in any way outside of the instructions provided by Horizon Hobby, LLC. This manual contains instructions for safety, operation and maintenance. It is essential to read and follow all the instructions and warnings in the manual, prior to assembly, setup or use, in order to operate correctly and avoid damage or serious injury.

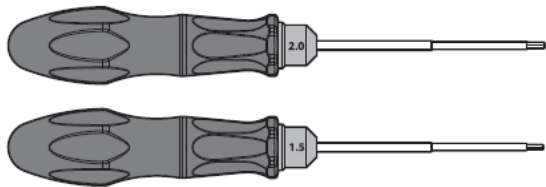
Age Recommendation: Not for children under 14 years. This is not a toy.

SAFETY PRECAUTIONS AND WARNINGS

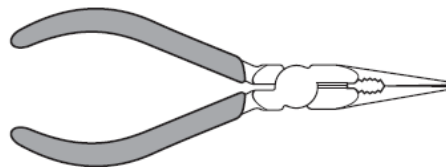
As the user of this product, you are solely responsible for operating in a manner that does not endanger yourself and others or result in damage to the product or property of others. This model is controlled by a radio signal subject to interference from many sources outside your control. This interference can cause momentary loss of control, so it is advisable to always keep a safe distance in all directions around your model as this margin will help avoid collisions or injury.

- Never operate your model with low transmitter batteries.
- Always operate your model in open spaces away from full-size vehicles, traffic and people.
- Never operate the model in the street or in populated areas for any reason.
- Carefully follow the directions and warnings for this and any optional support equipment (chargers, rechargeable battery packs, etc.) you use.
- Keep all chemicals, small parts and anything electrical out of the reach of children.
- Never lick or place any portion of the model in your mouth as it could cause serious injury or even death.
- Exercise caution when using tools and sharp instruments.
- Take care during maintenance as some parts may have sharp edges.
- Immediately after using your model, do NOT touch equipment such as the motor, electronic speed control and battery, because they generate high temperatures. You may burn yourself seriously touching them.
- Do not put fingers or any objects inside rotating and moving parts, as this may cause damage or serious injury.
- Always turn on your transmitter before you turn on the receiver in the car. Always turn off the receiver before turning your transmitter off.
- Keep the wheels of the model off the ground when checking the operation of the radio equipment.

TOOLS REQUIRED



• 1.5mm, 2.0mm Hex Drivers

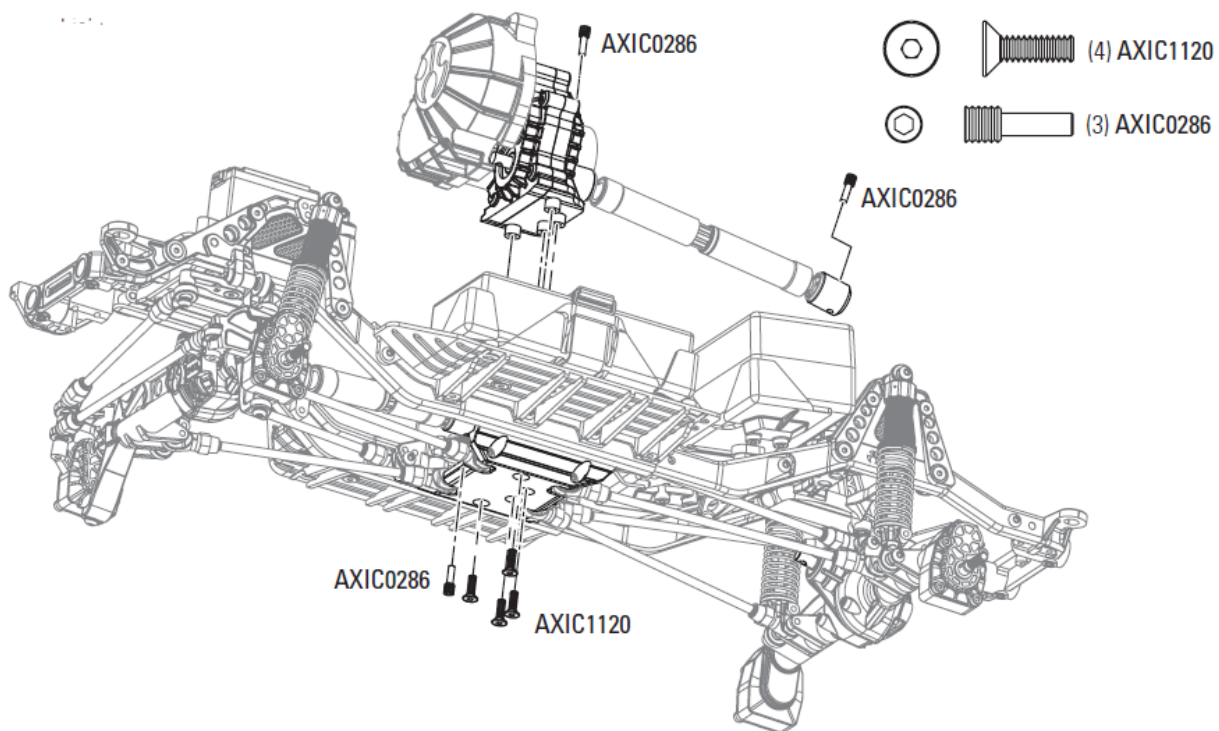


• Pliers

ASSEMBLY

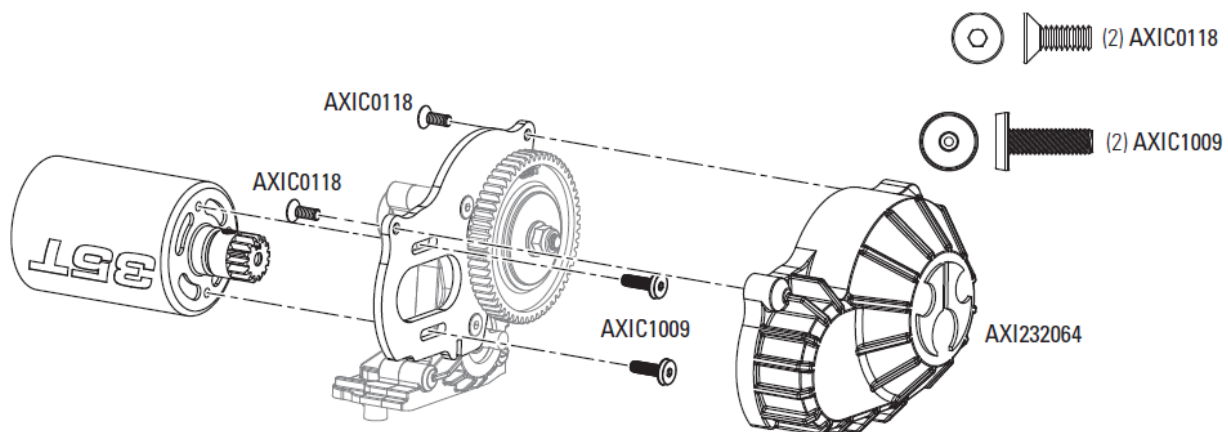
Remove the motor

IMPORTANT: These screws will be re-used in a later assembly step.

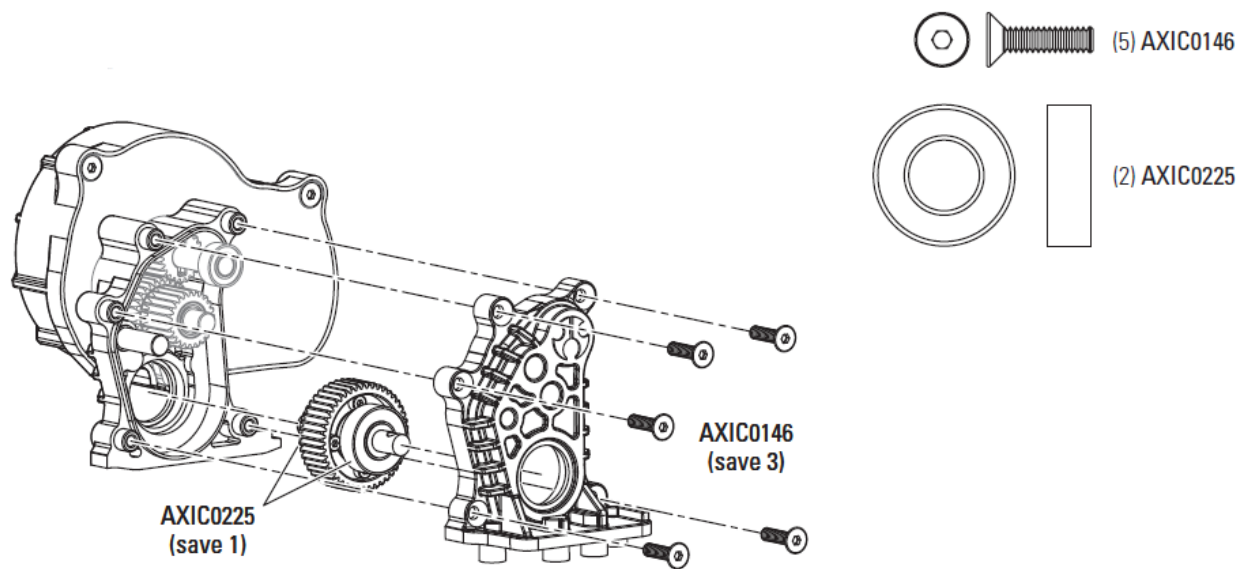


Remove the spur gear cover and motor.

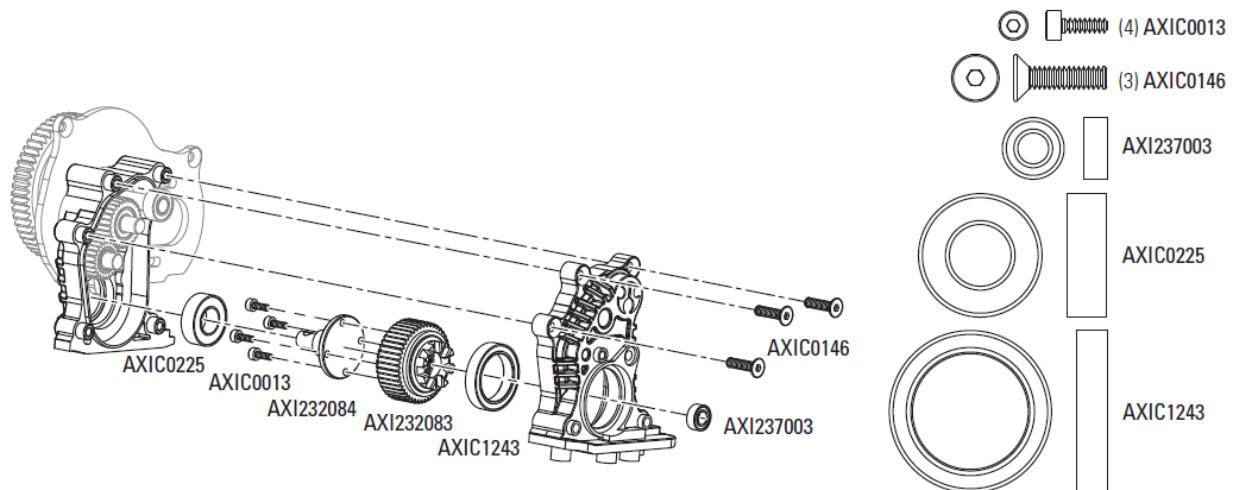
IMPORTANT: These screws will be re-used in a later assembly step.



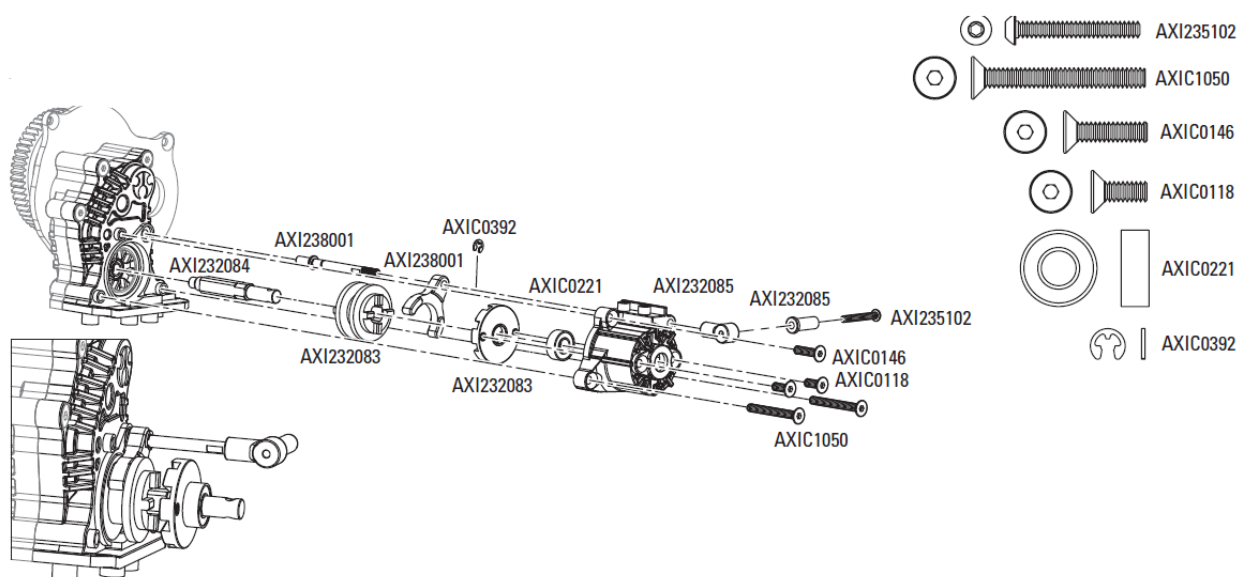
Remove the transmission cover and output gear assembly.



Assemble the output shaft and transmission cover.



Assemble the dig mechanism.



Assemble the dig servo.

© (2) AXIC3066



AXI235169



AXIC0118

Optional: Replaces the retainer cap and spring, locking the servo saver.

Servo saver adapter for 20T SX108 servo

AXIC0118 

Gear Mesh Example



AXIC0005

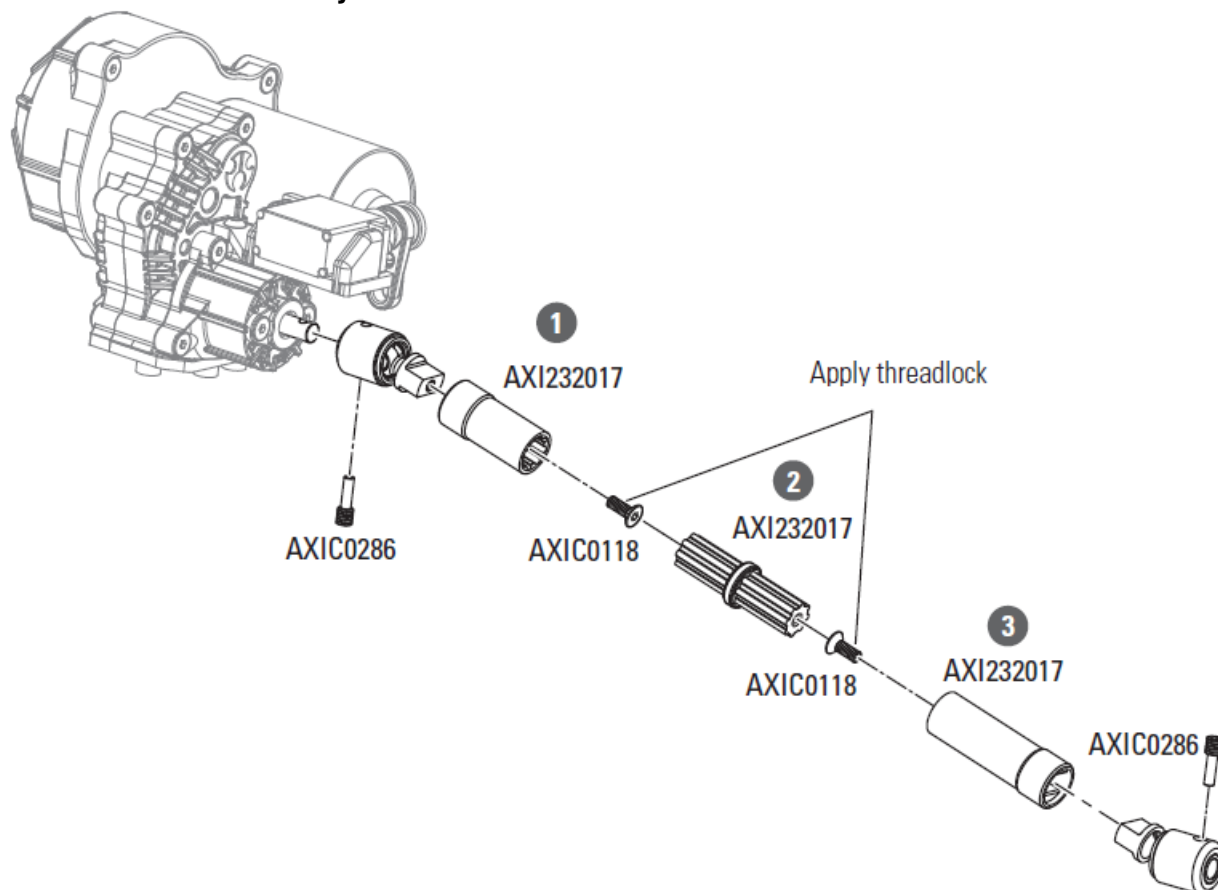


AXIC0118



1. Install the motor and set the gear mesh.
2. Install the dig servo and servo mount.
3. Install the gear cover.

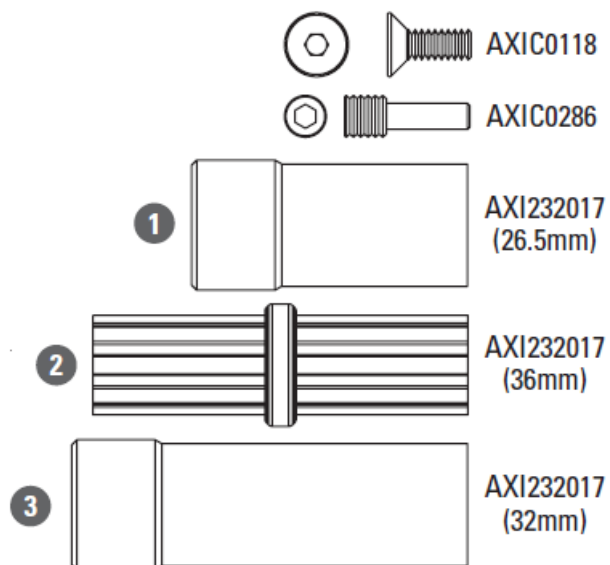
Rear Driveshaft Reassembly



DRIVESHAFT CONFIGURATIONS

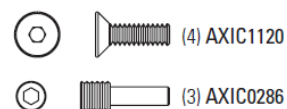
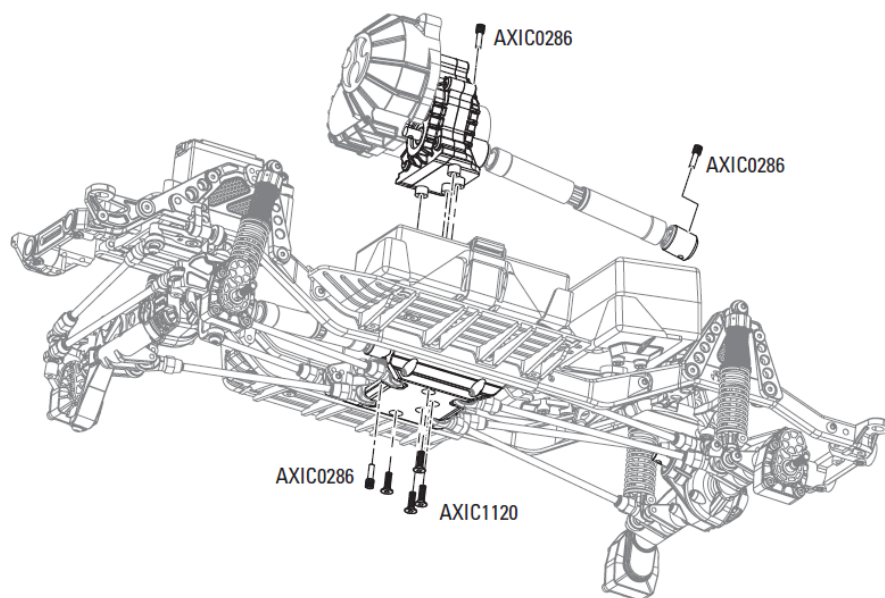
Rear Driveshaft

- 26.5mm
- 36mm
- 38mm



- Use the universals from the original rear driveshaft.
- Use the new plastic driveshaft parts as described in the table above.

Install the Assembly In the Vehicle



IMPORTANT: Set the transmitter travel adjustment of the dig servo channel to get the appropriate travel of the dig function mechanism, but not bind or over travel at either end.

PARTS

Part #	Description
AXIC3066	Cap Head M2x8mm Black (10)
AXIC0013	Cap Head M2x6mm Black Oxide (10)
AXIC0005	Hex Socket Button Head Black M3x6mm (10)
AXIC0221	Bearing 5x11x4mm (2)
AXIC1243	Bearing 15x21x4mm (2)
AXIC0392	E-Clip E2 (10)
AXIC0118	Hex Flat Head M3X8mm Black (10)
AXIC0146	Hex Socket Flat Head M3x12mm Black (10)
AXIC1050	Hex Socket Flat Head M3x25mm Black (10)
AXI232017	Wild Boar Driveshaft Set: Capra 1.9 UTB
AXI232083	Dig Cog & Plate: LCXU
AXI232084	Dig Outputs: LCXU
AXI232085	Dig Housing and Servo Adapters: LCXU
AXI235102	M2.5 x 18mm Button Head Screw (10)
AXI235169	M2.5 x 12mm Flat Head Screw (10)
AXI237003	4mm x 8mm x 3mm Ball Bearing (2)
AXI238001	LCXU Dig Conversion Kit
TLR5959	Flathead Screws M2.5 x 16mm (10)

LIMITED WARRANTY

What this Warranty Covers

Horizon Hobby, LLC, (Horizon) warrants to the original purchaser that the product purchased (the "Product") will be free from defects in materials and workmanship for a period of 2 years from the date of purchase.

What is Not Covered

This warranty is not transferable and does not cover (i) cosmetic damage, (ii) damage due to acts of God, accident, misuse, abuse, negligence, commercial use, or due to improper use, installation, operation or maintenance, (iii) modification of or to any part of the Product, (iv) attempted service by anyone other than a Horizon Hobby authorized service center, (v) Product not purchased from an authorized Horizon dealer, or (vi) Product not compliant with applicable technical regulations or (vii) use that violates any applicable laws, rules, or regulations. OTHER THAN THE EXPRESS WARRANTY ABOVE, HORIZON MAKES NO OTHER WARRANTY OR REPRESENTATION AND HEREBY DISCLAIMS ANY AND ALL IMPLIED WARRANTIES, INCLUDING, WITHOUT LIMITATION, THE IMPLIED WARRANTIES OF NON-INFRINGEMENT, MERCHANTABILITY AND FITNESS FOR A PARTICULAR PURPOSE. THE PURCHASER ACKNOWLEDGES THAT THEY ALONE HAVE DETERMINED THAT THE PRODUCT WILL SUITABLY MEET THE REQUIREMENTS OF THE PURCHASER'S INTENDED USE.

Purchaser's Remedy

Horizon's sole obligation and purchaser's sole and exclusive remedy shall be that Horizon will, at its option, either (i) service, or (ii) replace, any Product determined by Horizon to be defective. Horizon reserves the right to inspect any and all Product(s) involved in a warranty claim. Service or replacement decisions are at the sole discretion of Horizon. Proof of purchase is required for all warranty claims. SERVICE OR REPLACEMENT AS PROVIDED UNDER THIS WARRANTY IS THE PURCHASER'S SOLE AND EXCLUSIVE REMEDY.

Limitation of Liability

HORIZON SHALL NOT BE LIABLE FOR SPECIAL, INDIRECT, INCIDENTAL OR CONSEQUENTIAL DAMAGES, LOSS OF PROFITS OR PRODUCTION OR COMMERCIAL LOSS IN ANY WAY, REGARDLESS OF WHETHER SUCH CLAIM IS BASED IN CONTRACT, WARRANTY, TORT, NEGLIGENCE, STRICT LIABILITY OR ANY OTHER THEORY OF LIABILITY, EVEN IF HORIZON HAS BEEN ADVISED OF THE POSSIBILITY OF SUCH DAMAGES. Further, in no event shall the liability of Horizon exceed the individual price of the Product on which liability is asserted. As Horizon has no control over use, setup, final assembly, modification or misuse, no liability shall be assumed nor accepted for any resulting damage or injury. By the act of use, setup or assembly, the user accepts all resulting liability. If you as the purchaser or user are not prepared to accept the liability associated with the use of the Product, purchaser is advised to return the Product immediately in new and unused condition to the place of purchase.

Law

These terms are governed by Illinois law (without regard to conflict of law principals). This warranty gives you specific legal rights, and you may also have other rights which vary from state to state. Horizon reserves the right to change or modify this warranty at any time without notice.

WARRANTY SERVICES Questions, Assistance, and Services

Your local hobby store and/or place of purchase cannot provide warranty support or service. Once assembly, setup or use of the Product has been started, you must contact your local distributor or Horizon directly. This will enable Horizon to better answer your questions and service you in the event that you may need any assistance. For questions or assistance, please visit our website at www.horizonhobby.com, submit a Product Support Inquiry, or call the toll-free telephone number referenced in the Warranty and Service Contact Information section to speak with a Product Support representative.

Inspection or Services

If this Product needs to be inspected or serviced and is compliant in the country you live and use the Product in, please use the Horizon Online Service Request submission process found on our website or call Horizon to obtain a Return Merchandise Authorization (RMA) number. Pack the Product securely using a shipping carton. Please note that original boxes may be included, but are not designed to withstand the rigors of shipping without additional protection. Ship via a carrier that provides tracking and insurance for lost or damaged parcels, as Horizon is not responsible for merchandise until it arrives and is accepted at our facility. An Online Service Request is available at http://www.horizonhobby.com/content/service-center_render-service-center. If you do not have internet access, please contact Horizon Product Support to obtain an RMA number along with instructions for submitting your product for service. When calling Horizon, you will be asked to provide your complete name, street address, email address, and phone number where you can be reached during business hours. When sending the product to Horizon, please include your RMA number, a list of the included items, and a brief summary of the problem. A copy of your original sales receipt must be included for warranty consideration.

Be sure your name, address, and RMA number are clearly written on the outside of the shipping carton.

NOTICE: Do not ship Li-Po batteries to Horizon. If you have any issues with a Li-Po battery, please contact the appropriate Horizon Product Support office.

Warranty Requirements

For Warranty consideration, you must include your original sales receipt verifying the proof-of-purchase date. Provided warranty conditions have been met, your Product will be serviced or replaced free of charge. Service or replacement decisions are at the sole discretion of Horizon.

Non-Warranty Service

Should your service not be covered by warranty, service will be completed and payment will be required without notification or estimate of the expense unless the expense exceeds 50% of the retail purchase cost. By submitting the item for service you are agreeing to payment of the service without notification. Service estimates are available upon request. You must include this request with your item submitted for service. Non-warranty service estimates will be billed a minimum of 1/2 hour of labor. In addition, you will be billed for return freight. Horizon accepts money orders and cashier's checks, as well as Visa, MasterCard, American Express, and Discover cards. By submitting any item to Horizon for service, you are agreeing to Horizon's Terms and Conditions found on our website http://www.horizonhobby.com/content/service-center_render-service-center.

ATTENTION: Horizon service is limited to Product compliance in the country of use and ownership. If received, a non-compliant Product will not be serviced. Further, the sender will be responsible for arranging return shipment of the un-serviced Product, through a carrier of the sender's choice and at the sender's expense. Horizon will hold non-compliant Products for a period of 60 days from notification, after which they will be discarded.

WARRANTY AND SERVICE CONTACT INFORMATION

COUNTRY OF PURCHASE	HORIZON HOBBY	CONTACT INFORMATION	ADDRESS
United States of America	Horizon Service Center (Repairs and Repair Requests)	servicecenter.horizonhobby.com/RequestForm/	2904 Research Rd Champaign, IL 61822
	Horizon Product Support (Product Technical Assistance)	productsupport@horizonhobby.com	
		877-504-0233	
	Sales	websales@horizonhobby.com	
		800-338-4639	
European Union	Horizon Technischer Service	service@horizonhobby.eu	Hanskampring 9
	Sales: Horizon Hobby GmbH	+49 (0) 4121 2655 100	D 22885 Barsbüttel , Germany

COMPLIANCE INFORMATION FOR THE EUROPEAN UNION

EU Manufacturer of Record:

- Horizon Hobby, LLC
- 2904 Research Road
- Champaign, IL 61822 USA

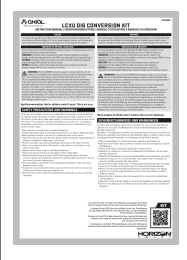
EU Importer of Record:

- Horizon Hobby, GmbH

- Hanskampring 9
- 22885 Barsbüttel Germany

WEEE NOTICE: This appliance is labeled in accordance with European Directive 2012/19/EU concerning waste of electrical and electronic equipment (WEEE). This label indicates that this product should not be disposed of with household waste. It should be deposited at an appropriate facility to enable recovery and recycling. ©2023 Horizon Hobby, LLC. Axial, the Axial logo, and the Horizon Hobby logo are trademarks or registered trademarks of Horizon Hobby, LLC. All other trademarks, service marks and logos are property of their respective owners.
Created 02/23 AXI238001

Documents / Resources

	<p>ASTRA AXI238001 Lcxu Dig Conversion Kit [pdf] Instruction Manual AXI238001 Lcxu Dig Conversion Kit, AXI238001, Lcxu Dig Conversion Kit, Conversion Kit, Kit</p>
---	---

References

- [RC Airplanes and Helicopters, RC Cars and Trucks, RC Boats, RC Radios | Horizon Hobby](#)
- [Ferngesteuerte Flugmodelle, Autos, Trucks, Hubschrauber, Boote und Fernsteuerungen | Horizon Hobby](#)
- [Horizon Hobby Service Center](#)
- [RC Cars, RC Trucks, RC Airplanes, Model Trains, and Slot Cars at Tower Hobbies](#)
- [RC Airplanes and Helicopters, RC Cars and Trucks, RC Boats, RC Radios | Horizon Hobby](#)
- [RC Airplanes and Helicopters, RC Cars and Trucks, RC Boats, RC Radios | Horizon Hobby](#)
- [RC Cars, RC Trucks, RC Airplanes, Model Trains, and Slot Cars at Tower Hobbies](#)