



User Install Guide
Wireless Access Point
—Installation Manual
Asterfusion Data Technologies Co., Ltd.

Contents [[hide](#)]

- [1 AP6030 Wireless Access Point](#)
- [2 Install Wireless Access Point](#)
- [3 Bringing the Controller Online](#)
- [4 Documents / Resources](#)
 - [4.1 References](#)

AP6030 Wireless Access Point

Warning:

This device complies with Part 15 of the FCC Rules. Operation is subject to the following two conditions: (1) this device may not cause harmful interference, and (2) this device must accept any interference received, including interference that may cause undesired operation.

Changes or modifications not expressly approved by the party responsible for compliance could void the user's authority to operate the equipment.

NOTE: This equipment has been tested and found to comply with the limits for a Class B digital device, pursuant to Part 15 of the FCC Rules. These limits are designed to provide reasonable protection against harmful interference in a residential installation. This equipment generates, uses and can radiate radio frequency energy and, if not installed and used in accordance with the instructions, may cause harmful interference to radio communications. However, there is no guarantee that interference will not occur in a particular installation. If this equipment does cause harmful interference to radio or television reception which can be determined by turning the equipment off and on, the user is encouraged to try to correct the interference by one or more of the following measures:

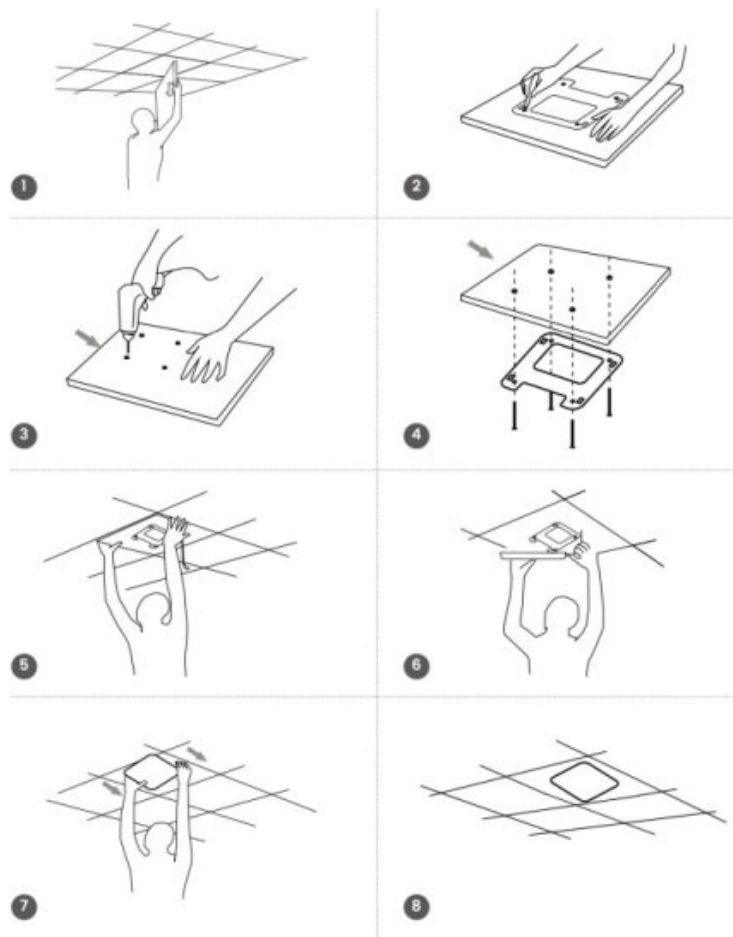
- Reorient or relocate the receiving antenna.
- Increase the separation between the equipment and receiver
- Connect the equipment into an outlet on a circuit different from that to which the receiver is connected.
- Consult the dealer or an experienced radio/TV technician for help

RF Exposure Statement

To maintain compliance with FCC's RF Exposure guidelines, this equipment should be installed and operated with minimum distance of 20cm the radiator your body. This device and its antenna(s) must not be co-located or operation in conjunction with any other antenna or transmitter.

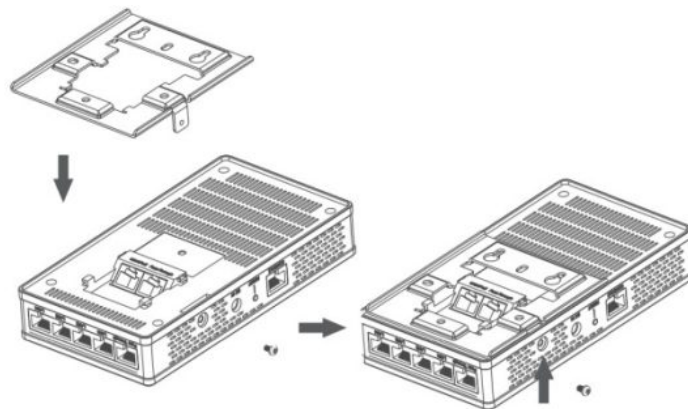
Install Wireless Access Point

1.1 Ceiling-mounted AP Installation Steps

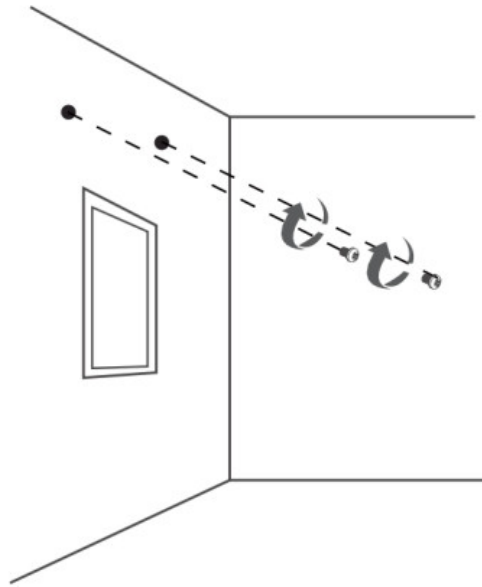


1.2 Panel-mounted AP Installation Steps

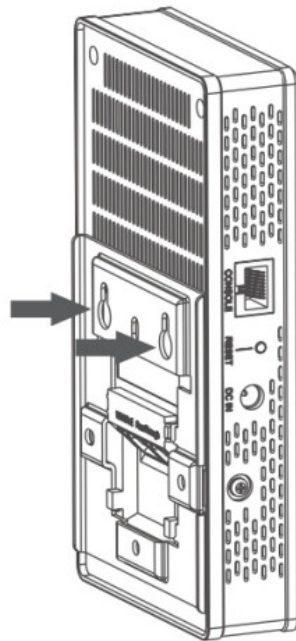
1.2.1 First, attach the wall mount to the product and secure it with screws.



1.2.2 Next, drill holes in the wall and install the screws.



1.2.2.1 Finally, hang the product on the wall.



1.3 Outdoor AP Installation Steps

1.3.1 Product Installation

- a. Ensure the device is powered off.
- b. As shown in Figure 1, insert the mounting clamp into the mounting holes on the back of the enclosure.
- c. Use the clamp to secure the device to the mounting pole (the pole diameter range is 40-60mm). Once the desired angle and direction are confirmed, use a flathead screwdriver to tighten the clamp and secure it in place (the enclosure antenna comes in various optional specifications).

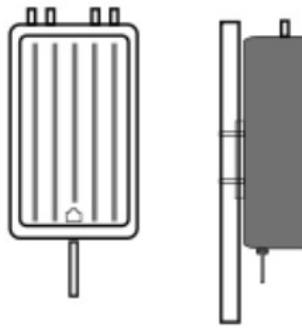


Figure 1

1.3.2 Hardware Connection

- Connect the outdoor AP device to the PoE port of the PoE power adapter using an Ethernet cable. (For non-standard Ethernet cables, ensure that the impedance of each wire in the cable does not exceed 6 ohms for the required length.)
- Connect the PC to the LAN port of the PoE power adapter using an Ethernet cable.
- Once the PoE power adapter is powered on, the Power indicator on the outdoor AP will remain solid, indicating that the device is powered and operational.
- Check the network connection status on the PC to verify that the network connection between the PC and the outdoor AP is functioning properly, as shown in Figure 2.

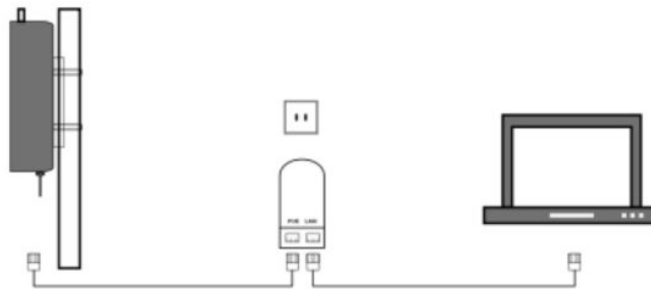


Figure 2

1.3.3 Installation Range

- The straight-line distance should be within the AP's signal coverage range.
- Route the Ethernet cable from the interior to the exterior, extending it to the designated location for the outdoor AP installation. Ensure that the RJ45 connectors at both ends of the cable are properly wired, with all eight wire cores correctly positioned and making good contact. Use the 568B wiring standard for the cable. After the cable is assembled, use a cable tester to check for any issues.
- The height of the mounting pole should be at least 1.5 meters above the roof. The outdoor AP's flat panel should be aligned with the base station AP to ensure optimal signal strength.



Figure 3

Bringing the Controller Online

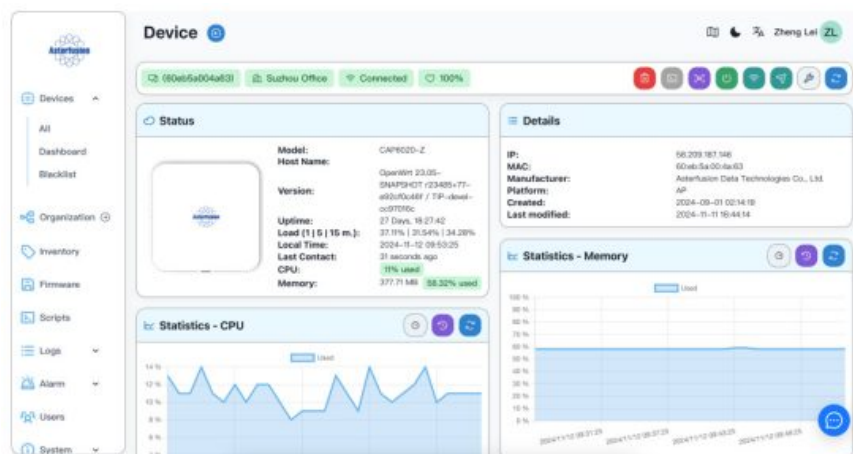
2.1 DHCP Server Configuration

The DHCP server configuration with the option 138 field is a prerequisite, indicating the IP address or domain name of the controller, as shown below:

```
# Test environment demonstration network AP management network subnet
192.168.21.0 netmask 255.255.255.0
{range 192.168.21.0 192.168.21.250;
option domain-name-servers 223.5.5.5, 180.76.76.76, 114.114.114.114;
option capwap-ac-v4 192.168.15.124; # The option 138 field followed by the IP address
of the controller
option routers 192.168.21.254;
option broadcast-address 192.168.21.255;
default-lease-time 7200;
max-lease-time 7200;}
```

2.2 Viewing the Controller

Access the controller's IP using a web browser, for example: <https://192.168.18.72>, Enter the username and password to log in to the controller's web interface, as shown in the image below:

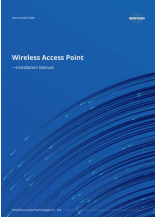




Copyright ©2024 Asterfusion.

All rights reserved.

Documents / Resources

	<p>Asterfusion AP6030 Wireless Access Point [pdf] Installation Guide</p> <p>AP6030, 2BMIU-AP6030, 2BMIUAP6030, AP6030 Wireless Access Point, AP6030, Wireless Access Point, Access Point, Point</p>
---	---

References

- [User Manual](#)

■ Asterfusion

◆ 2BMIU-AP6030, 2BMIUAP6030, Access Point, AP6030, AP6030 Wireless Access Point, Asterfusion, Point, Wireless Access Point

Leave a comment

Your email address will not be published. Required fields are marked *

Comment *

Name

Email

Website

☐ Save my name, email, and website in this browser for the next time I comment.

Post Comment

Search:

e.g. whirlpool wrf535swhz

Search

[Manuals+](#) | [Upload](#) | [Deep Search](#) | [Privacy Policy](#) | [@manuals.plus](#) | [YouTube](#)

This website is an independent publication and is neither affiliated with nor endorsed by any of the trademark owners. The "Bluetooth®" word mark and logos are registered trademarks owned by Bluetooth SIG, Inc. The "Wi-Fi®" word mark and logos are registered trademarks owned by the Wi-Fi Alliance. Any use of these marks on this website does not imply any affiliation with or endorsement.