



ASTERA AX2-50 PixelBar Wireless Linear Wash Fixture User Manual

[Home](#) » [ASTERA](#) » ASTERA AX2-50 PixelBar Wireless Linear Wash Fixture User Manual 

Contents

- [1 ASTERA AX2-50 PixelBar Wireless Linear Wash Fixture](#)
- [2 SAFETY INFORMATION](#)
- [3 INTRODUCTION/INTENDED USE](#)
- [4 CLEANING AND MAINTAINING](#)
- [5 Hanging](#)
- [6 TROUBLESHOOTING](#)
- [7 Documents / Resources](#)
 - [7.1 References](#)
- [8 Related Posts](#)



ASTERA AX2-50 PixelBar Wireless Linear Wash Fixture



SAFETY INFORMATION

Before you operate this unit read the manual carefully. Always make sure to include the manual if you pass/ rent/ sell the unit to another user. Keep in mind that this manual cannot address all possible dangers and environments. Please use your own caution when operating.

This product is for professional use only. It is not for household use.

- Do not operate the unit in areas of high temperature conditions or under direct sunlight. It will cause abnormal function or damage the product.
- Always use a suitable safety wire when mounting the light overhead.
- Connect the safety wire only to the intended safety mount.
- Always follow local safety requirements.
- Only authorized personnel may service the battery.
- Do not place in fire or heat.
- Do not use or charge the light if it is damaged.
- Avoid bumping or plunging, it may cause fire or explosion.
- Never store the battery when fully drained. Always recharge immediately when empty.
- Make sure to fully charge all units before storing them.
- Partially charged batteries will lose capacity.
- Fully recharge every 6 months if not used.
- The battery may only be replaced with an original spare part from Astera.
- Always charge with the flight case open.
- It is recommended to charge at a temperature between 15°C and 35°C

Warning: In extreme cases, abuse or misuse of standard/rechargeable batteries can lead to:

- Explosion
- Fire development
- Heat generation or Smoke and gas development.

Do not directly look into the light.

- It can cause harm to your eyes.
- Do not look at the LEDs with a magnifying glass or any other optical instrument that may concentrate the light output.
- Use only Astera approved accessories to diffuse or modify the light beam.

The exterior surfaces of the light can become hot during normal operation.

- Ensure that accidental physical contact with the device is impossible.
- Install only in ventilated locations.
- Do not cover the light.
- Allow all lights to cool before touching.
- Keep 0.3m (12in) from objects to be illuminated.



TRANSPORTATION AND STORAGE

The AX2-50/-100 PixelBar contains a Lithium-Ion battery and can be carried around. A transportation case is recommended to keep the product safe.

- Do not place in fire or heat.
- Never store the battery when fully drained.
- Make sure to fully charge all units before storing them.

SECONDARY PROTECTION

- The AX2-50/-100 PixelBar must always be secured by a safety wire when used in a hanging position. If the primary suspension fails, the device must not fall more than 20cm.

- Use Safety rigging point. Please check the safety regulations in your region.

INTRODUCTION/INTENDED USE

- The AX2-50 / AX2-100 from ASTERA is a LED wallwasher for professional use in the event and film business. The AX2 is designed for direct or indirect illumination of objects. Due to its built-in battery it can be quickly set up and at places where traditional lights cannot be mounted easily. Like the ASTERA Tubes, the AX2 has the Titan LED Engine and offers excellent color and light values. The AX2 generates white or colored light and the color temperature can be adjusted in many ways. Both AX2 models can be controlled with the AsteraApp or with wired DMX or wireless CRMX. The device can also be controlled by the integrated display or by infrared remote control.
- The AX2 can be used standing or hanging. For this purpose, the device is equipped with airline tracks to attach the appropriate mounting accessories. Furthermore, several AX2 can be easily connected with the integrated Bar Connect+.
- The AX2 can be used indoors and outdoors and has an IP65 rating.
- Do not shake the device. Avoid brute force when installing or operating the device.
- When choosing the installation-spot, please make sure that the device is not exposed to extreme heat or dust. Avoid direct sunlight for a longer period of time.
- There should not be any cables lying around. You endanger your own and the safety of others! The ambient temperature must be set. Keep away from direct insulation (particularly in cars) and heaters.
- Never use the device during thunderstorms connected to the power mains. Over voltage could destroy the device. Always disconnect the device during thunderstorms.
- Make sure that the area below the installation place is blocked when rigging, derigging or servicing the fixture.
- Always fix the fixture with an appropriate safety wire.
- Operate the device only after having become familiarized with its functions.
- Please consider that unauthorized modifications on the device are forbidden due to safety reasons! If this device will be operated in any way different to the one described in this manual, the product may suffer damages and the
- guarantee becomes void. Furthermore, any other operation may lead to dangers like shortcircuit, burns, electric shock, crash etc. This device is not for household use and is not suitable for permanent installation.

CONTENT

#1 AX2-50 or AX2-100 PixelBar #2 Feet (2x) #3 PowerCON TRUE1 Cable #4 Manual



CLEANING AND MAINTAINING

Caution: Liquids entering the housing of the device can cause a short circuit and damage the electronics. Do not use any cleaning agents or solvents.

PRODUCT OVERVIEW

USING THE AX2 PIXELBAR

- Control options – integrated control panel
- Use the menu buttons (menu, +, – ,enter) to navigate through the main menu.
- Settings for color adjustment and brightness / runti-me are directly accessible by two symbol buttons.

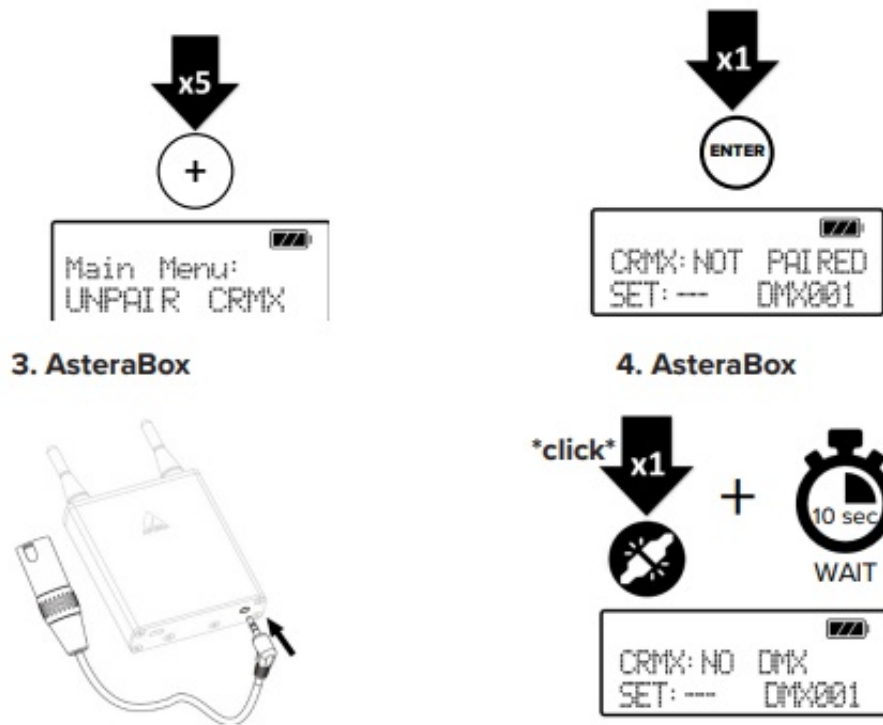
More control options

- On/Off, Static Colors,
- Preprogrammed Effects Settings,
- Complex effects, Talkback
- Control from DMX consoles via CRMX or W-DMX
- Control from DMX consoles via DMX cable

Switching ON or OFF

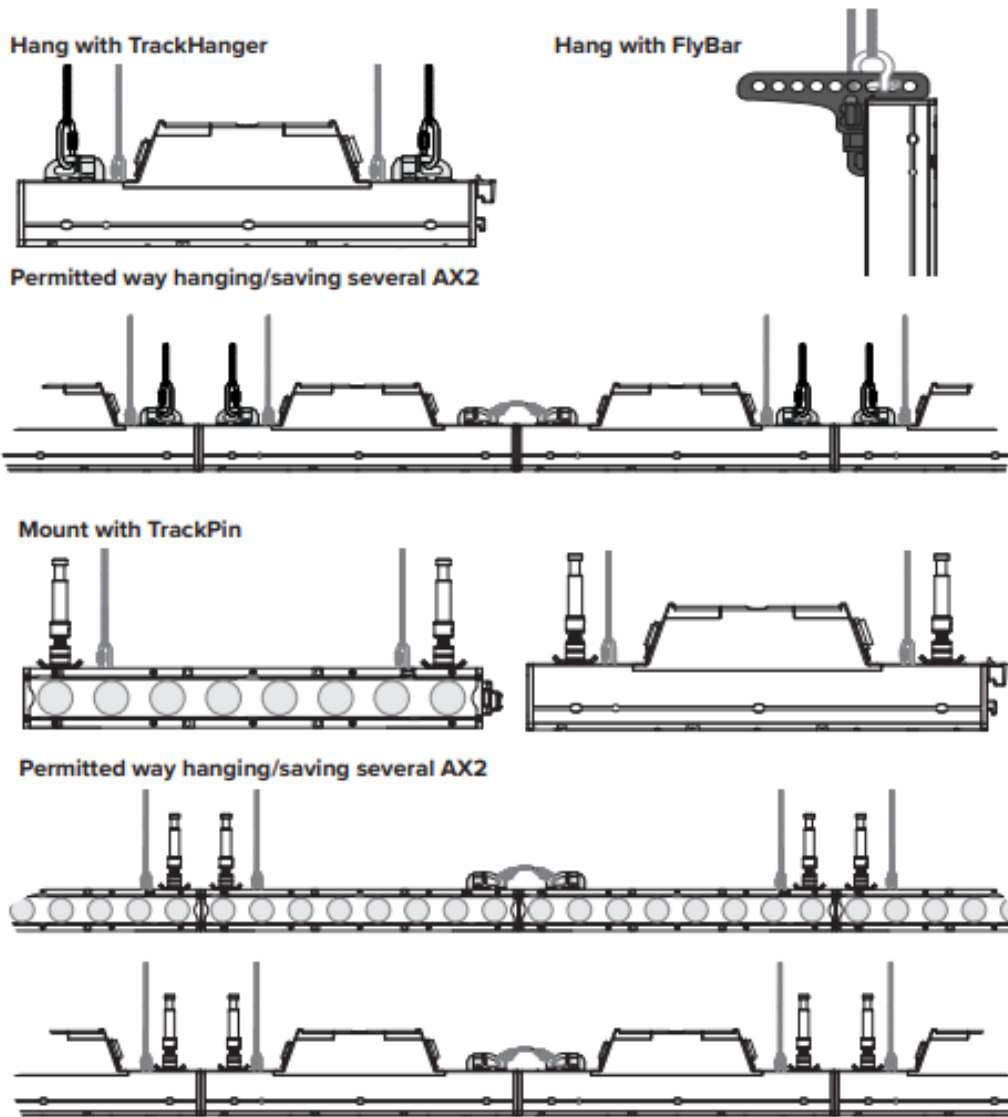


- Please note: a new AX2-50/-100 needs a few seconds of charge to disable its shipping mode.
- Pairing with the AsteraApp
- Turn the AX2-50/-100 into „blue mode“ by holding down the power button for 3 seconds.
- Linking to a CRMX transmitter AX2 PixelBar



Hanging

The Airline tracks at back and bottom of the AX2-50/-100 housing are used to attach optionally available mounting fittings. The AX2-50/-100 can be mounted using TrackPins (AX-TP) and Superclamps/GripHeads or hung up using the TrackHangers (AX-TH) or FlyBar (AX2-FB) for vertical position. When hanging, secure with a safety wire. This should be attached to the safety hooks at the back of the AX2-50/-100 housing. Make sure the light cannot drop more than 20cm if primary mounting fails. BarConnect+ (Integrated fasteners and counterparts) at both ends of the housing click into place and make a form-fitting locked connection when arranging multiple units in a line. When hanging vertical, it is permitted to join a maximum amount of 4 units of AX2-50 or 4 units of AX2-100 together in a line (Notice: fasten at least at every 2nd connection point)



Connecting several AX2 with BarConnect+

Quickly merge several PixelBars while maintaining the pixel pitch. Aim connected units together to maintain consistent lighting or hang them. The integrated IR modules enable auto-addressing for AsteraApp and DMX control.

1. 2. 3.


TROUBLESHOOTING

Problem	Possible cause	Solution
The fixture does not turn on	The battery may be empty	Connect it to the AC and try again
The fixture turns on and the display is on, but the LEDs do not emit light	The fixture could be set to BLACKOUT mode	Set to display black color or is operating in DMX mode and doesn't receive a valid signal. It is good practice to do a RESET SETTINGS
The fixture is not working correctly – it does not display the color or effect chosen	The fixture may still be operating under a previous setting	It is good practice to do a RESET SETTINGS between setups
The power cable is connected but the fixture is not charging	The battery may be fully charged	The fixture will only commence charging when its battery has a temperature of 45° C or less. Turn the fixture off and let it cool down; once cold enough, it will start charging

SPECIFICATIONS – TECHNICAL DATA

Item Code	AX2-50 / -100	Input Voltage	110 – 240V, 50/60 Hz	
Colors	RGBMintAmber	Input Current	0.7A/115VAC ~ 1.0A/230VAC	
Total LED Power	80W / 160W	Range	300 m / 330 yds	
Power Draw	40W / 80W	Wired DMX	Yes	
Light output – 2700k, 3200k,5500k (50)*	1800lm, 2230lm, 2265lm	CRMX Receiver	Built in	
Light output – 2700k, 3200k,5500k (100)*	3600lm, 4460lm, 4530lm	Wireless Frequencies	CRMX 2.4GHz, UHF	
CRI(RA)/TLCI 3200-6500k*	≥96	Housing	Aluminium	
Beam Angle	21°	IP Rating	IP65	
Strobe	0 – 25Hz	Operating Temperature	0° – 40° C / 32° – 104° F	
Pixels	8 / 16	Weight	4.5kg/9.9lbs / 7.9 kg/17.5 lbs	
Battery Lifetime	70 % after 300 cycles	Dimensions with hook (mm/inches)	520 x 165 x 65 / 20.5 x 6,5 x 2,6	
Battery Runtime	up to 20 hours		1020 x 165 x 65 / 40.1 x 6,5 x 2,6	
Charging Time (nominal)	5 hrs	Dimensions without hook (mm/inches)	500 x 165 x 65 / 19.7 x 6.5 x 2.6	
			1000 x 165 x 65 / 39.4 x 6.5 x 2.6	

Documents / Resources

   <small> ASTERA Lighting Inc. 10000 14th Avenue, Suite 100, Richmond, BC V6V 2G9, Canada Tel: 604.273.8888 Fax: 604.273.8889 Email: info@astera-lighting.com © 2018 ASTERA Lighting Inc. All rights reserved. </small>	ASTERA AX2-50 PixelBar Wireless Linear Wash Fixture [pdf] User Manual AX2, X55AX2, AX2-100 PixelBar, AX2-50 PixelBar Wireless Linear Wash Fixture, AX2-50 PixelBar Wireless Linear Wash Fixture
---	--

References

-  [Commercial Lighting and Lighting Controls | Current - GLI Brands](#)
-  [Wireless LED Lighting Film & Event by Astera](#)

Manuals+.