

ASSURE Add On Griddle, Broiler Instruction Manual

[Home](#) » [ASSURE](#) » ASSURE Add On Griddle, Broiler Instruction Manual



Contents [[hide](#)]

- [1 Add On Griddle, Broiler](#)
- [2 CONTENTS:](#)
- [3 Documents / Resources](#)
- [4 Related Posts](#)

Add On Griddle, Broiler

- USE CAUTION AS EQUIPMENT MAY BE HOT
- TWO-PERSON LIFT RECOMMENDED

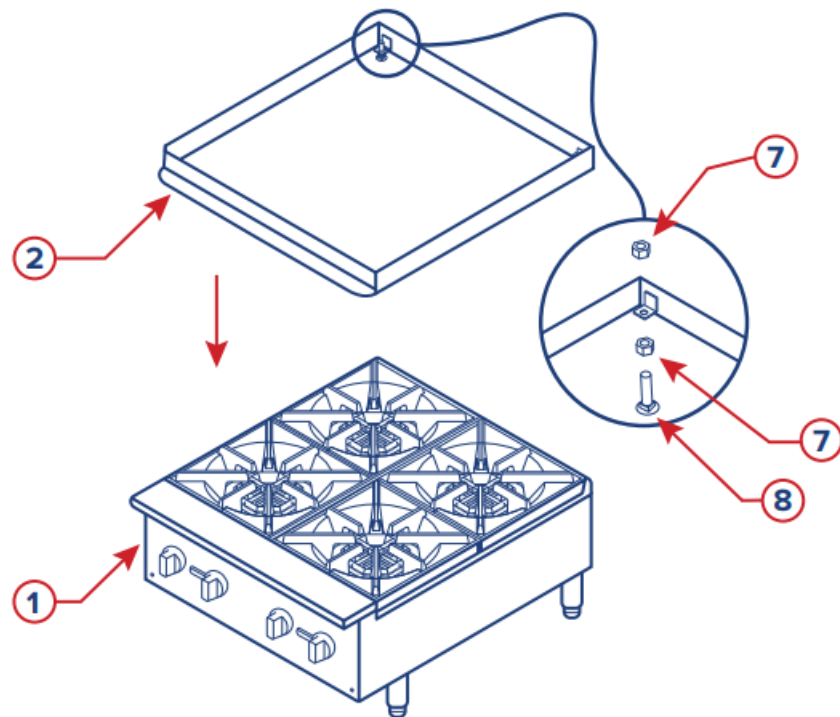
CONTENTS:

1. Cooking Equipment (Not Included) – 1
2. Frame – 1
3. Broiler – 1
4. Panel – 1
5. Griddle – 1
6. Grease Tray – 1
7. M10 Nut – 4

- 8. M10 Carriage Bolts – 2
- 9. Handle (Not Pictured) – 1

STEP 1.

Install bolt and 2 nuts to both brackets on back of frame with bolt head facing down.



STEP 2.

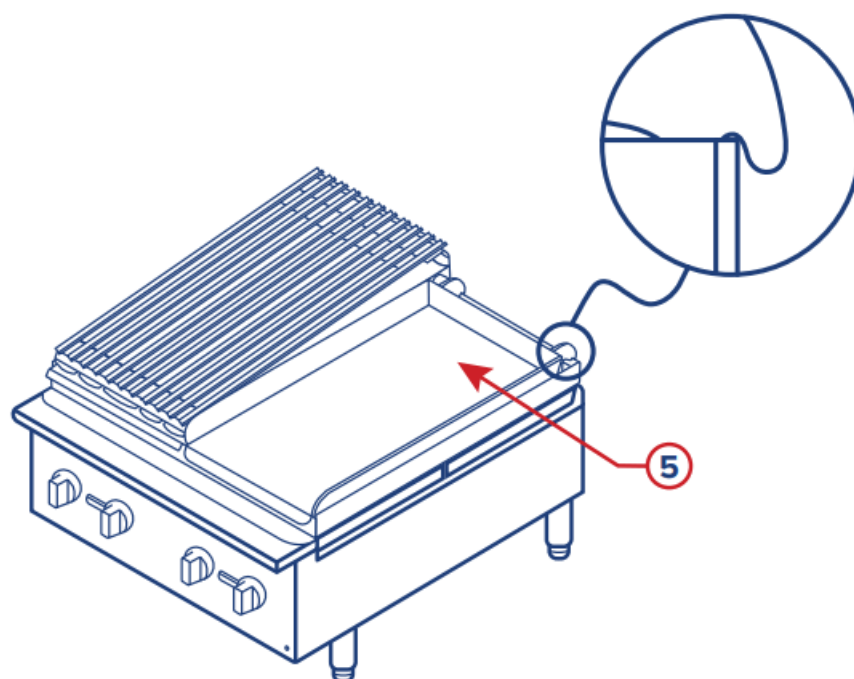
Set frame on range and use bolts in rear to level the frame. Tighten nuts to secure in place.

NOTE – For griddle, use step 3A only.

For charbroiler, use step 3B only. For a combination, use steps 3A & 3B.

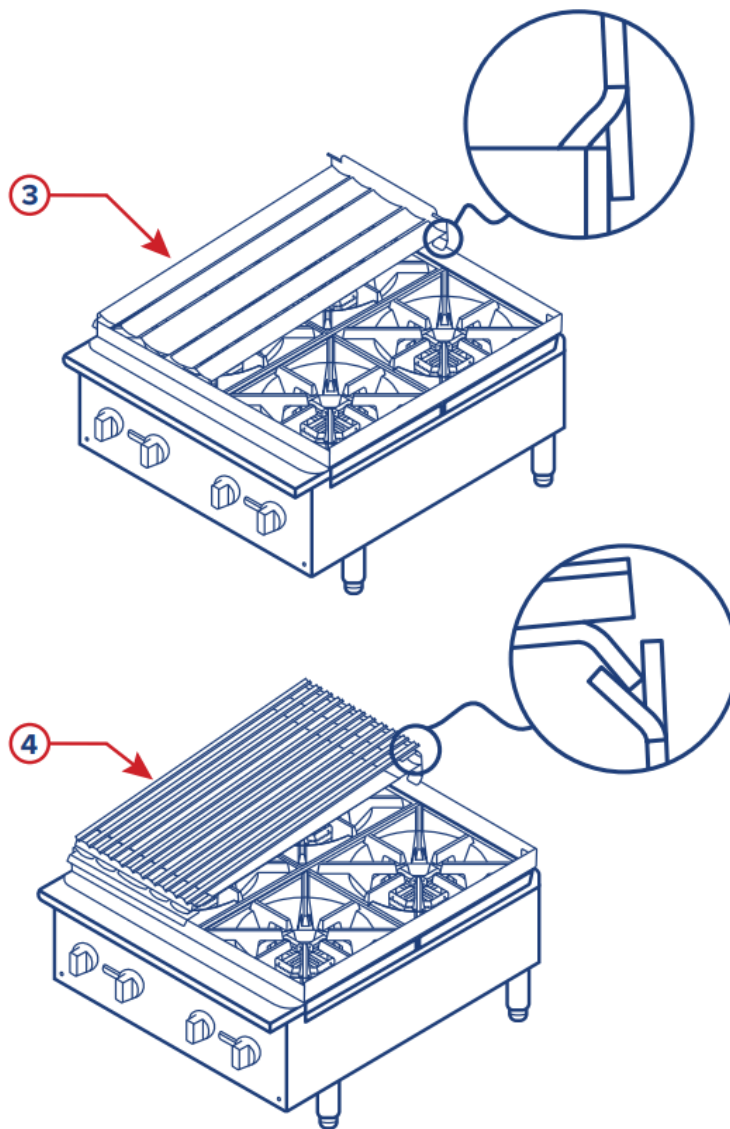
STEP 3A.

Set the griddle onto frame using the 2 hooks in the rear.



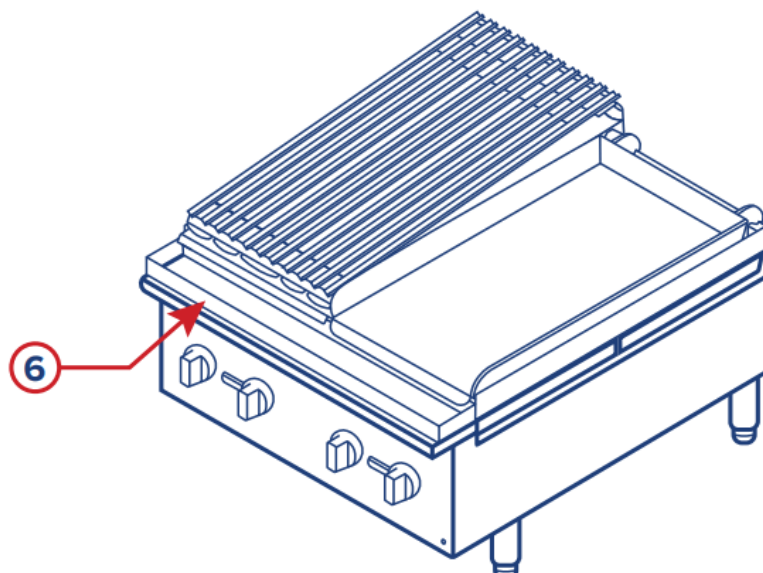
STEP 3B.

Set the broiler onto frame using the 2 hooks in the rear.
Set broiler grates onto the broiler using the 2 hooks in the rear.



STEP 4.

Rotate drip tray under front lip of griddle/broiler.
To remove drip tray when griddle/broiler is hot, use included handle.



Documents / Resources

