



## ASSET ISKU Number Lock Instructions

[Home](#) » [ASSET](#) » ASSET ISKU Number Lock Instructions 

# ASSET ISKU

### Contents

- [1 ASSET ISKU Number Lock](#)
- [2 operating instructions](#)
- [3 Emergency opening without code reset](#)
- [4 Emergency opening with code reset](#)
- [5 QR](#)
- [6 Documents / Resources](#)
- [7 Related Posts](#)

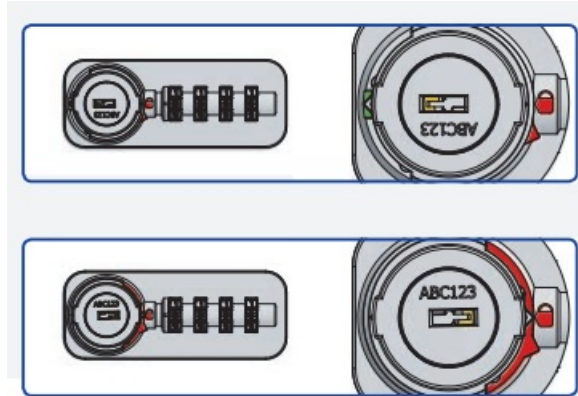
### ASSET ISKU Number Lock



## operating instructions

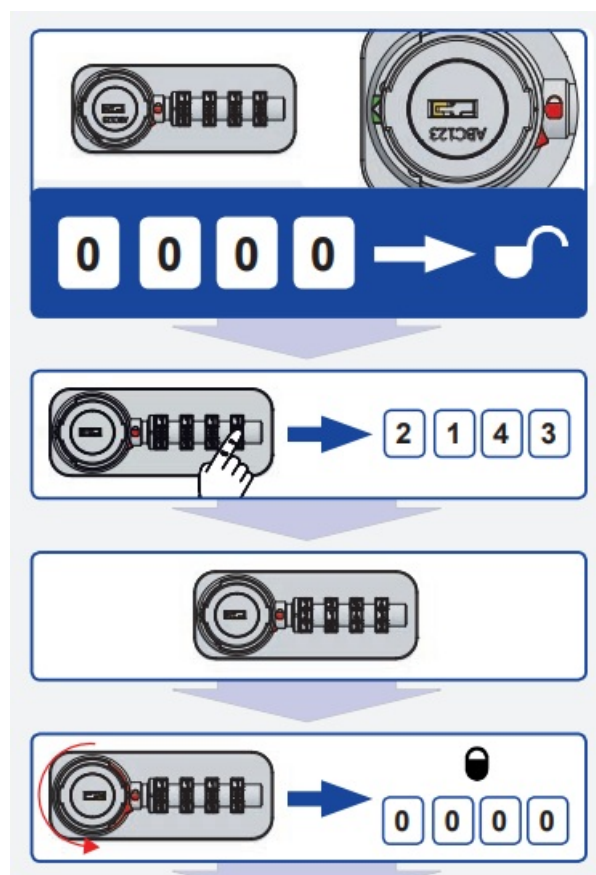
### Unlocked position.

- When setting a code, always start with lock in an unlocked position.
- Locked position.



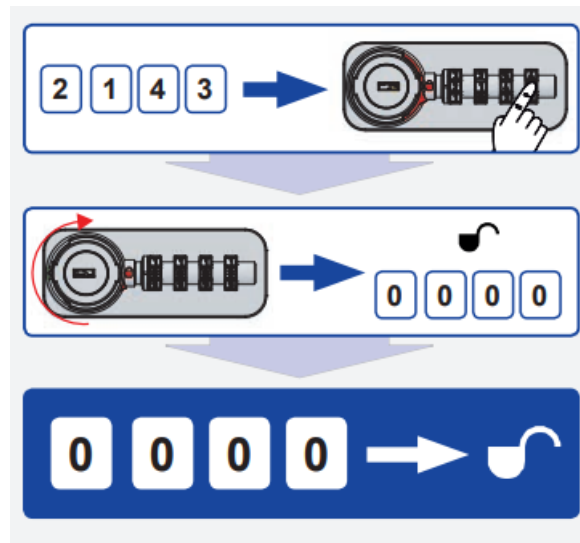
### Locking the door

- All digits set to “0”, the lock is unlocked.
- Set your personal code.
- Close the lock by turning it 180° to the left.
- Code is automatically scrambled.



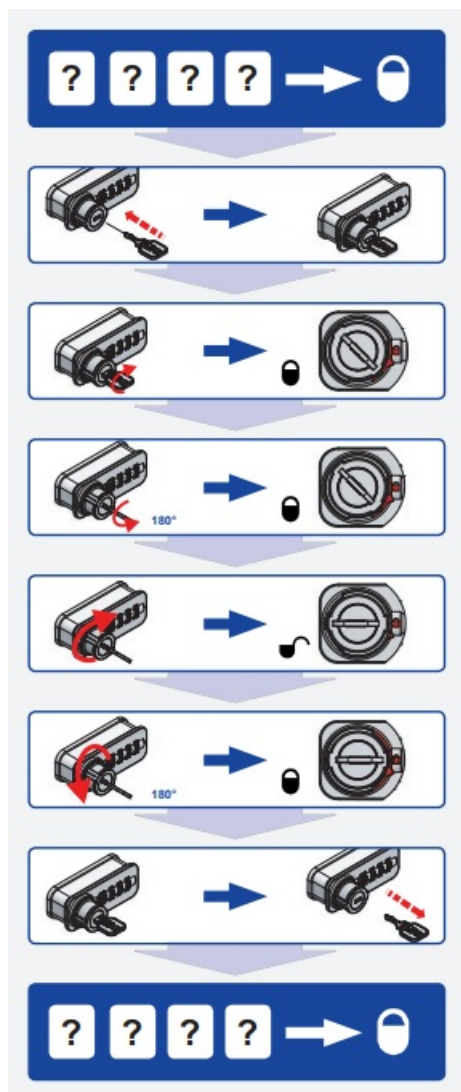
### Opening the door

- Set your personal code.
- Open the lock by turning it 180° to the right.
- Code is automatically scrambled.
- A new code can be set by the next user.



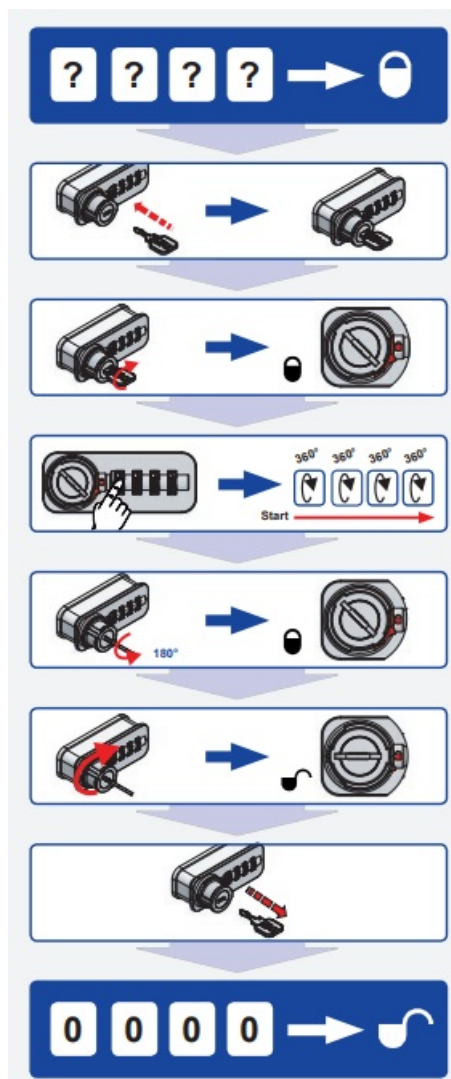
### Emergency opening without code reset

- All digits set to "0", the lock is locked.
- Insert the emergency key available from the building management.
- Turn the key to the right until you hear a "click". The lock is still locked.
- Turn the key 180° to the left. The lock is still locked.
- Turn the knob to the right as far as it will go. The lock is now unlocked.
- Turn the knob 180° to the left. The lock is locked again.
- Remove the emergency key.
- All digits set to "0", the lock is locked.



### Emergency opening with code reset

- All digits set to “0”, the lock is locked.
- Insert the emergency key available from the building management.
- Turn the key to the right until you hear a “click”. Lock is still locked.
- Turn the dials 1 – 4 one after the other 360° starting from the knob.
- Turn the key 180° to the left. Lock is still locked.
- Turn the knob to the right as far as it will go. The lock is now unlocked.
- Remove the emergency key.
- Access code is now erased and the lock can be programmed again.



QR



Scan the QR for  
further instructions

## Documents / Resources

	<p><a href="#">ASSET ISKU Number Lock</a> [pdf] Instructions</p> <p>ISKU Number Lock</p>
--	--

