

ASSA ABLOY  
ASSA ABLOY  
NTT622-ACC  
nexTouch Keypad  
Access Exit Trim  
Lock



# ASSA ABLOY NTT622-ACC nexTouch Keypad Access Exit Trim Lock User Manual

[Home](#) » [ASSA ABLOY](#) » ASSA ABLOY NTT622-ACC nexTouch Keypad Access Exit Trim Lock User Manual 

## Contents

- 1 [ASSA ABLOY NTT622-ACC nexTouch Keypad Access Exit Trim Lock](#)
- 2 [Product Usage Instructions](#)
- 3 [Before YOU Begin](#)
- 4 [Tools Needed](#)
- 5 [Door Position Switch Option](#)
- 6 [Change Hand of Trim \(if necessary\)](#)
- 7 [Install Outside Trim Assembly](#)
- 8 [Install Strike and Optional DPS](#)
- 9 [FCC:](#)
- 10 [FAQ](#)
- 11 [Documents / Resources](#)
  - 11.1 [References](#)
- 12 [Related Posts](#)

# ASSA ABLOY

**ASSA ABLOY NTT622-ACC nexTouch Keypad Access Exit Trim Lock**



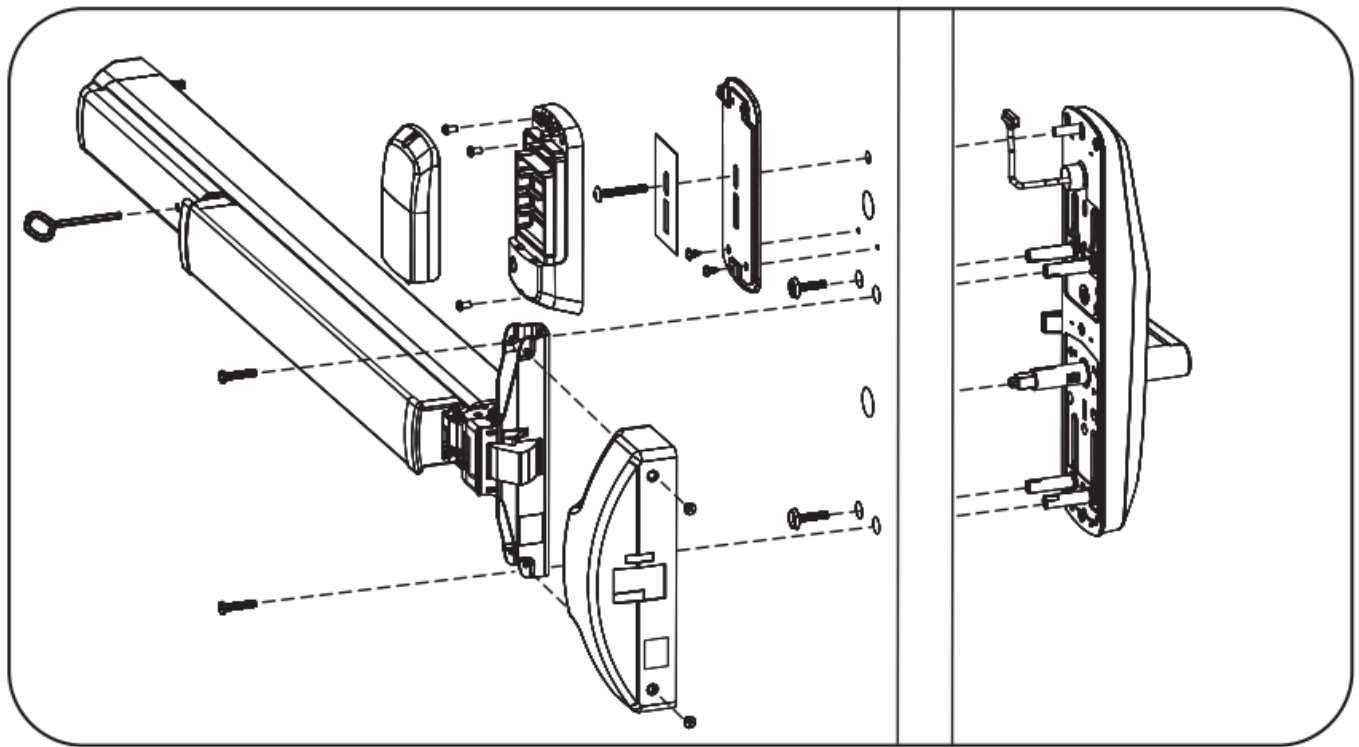
### **Specifications**

- Model: NTT622-ACC
- Manufacturer: ASSA ABLOY
- Date: 08/2018

### **Product Usage Instructions**

#### **WARNING**

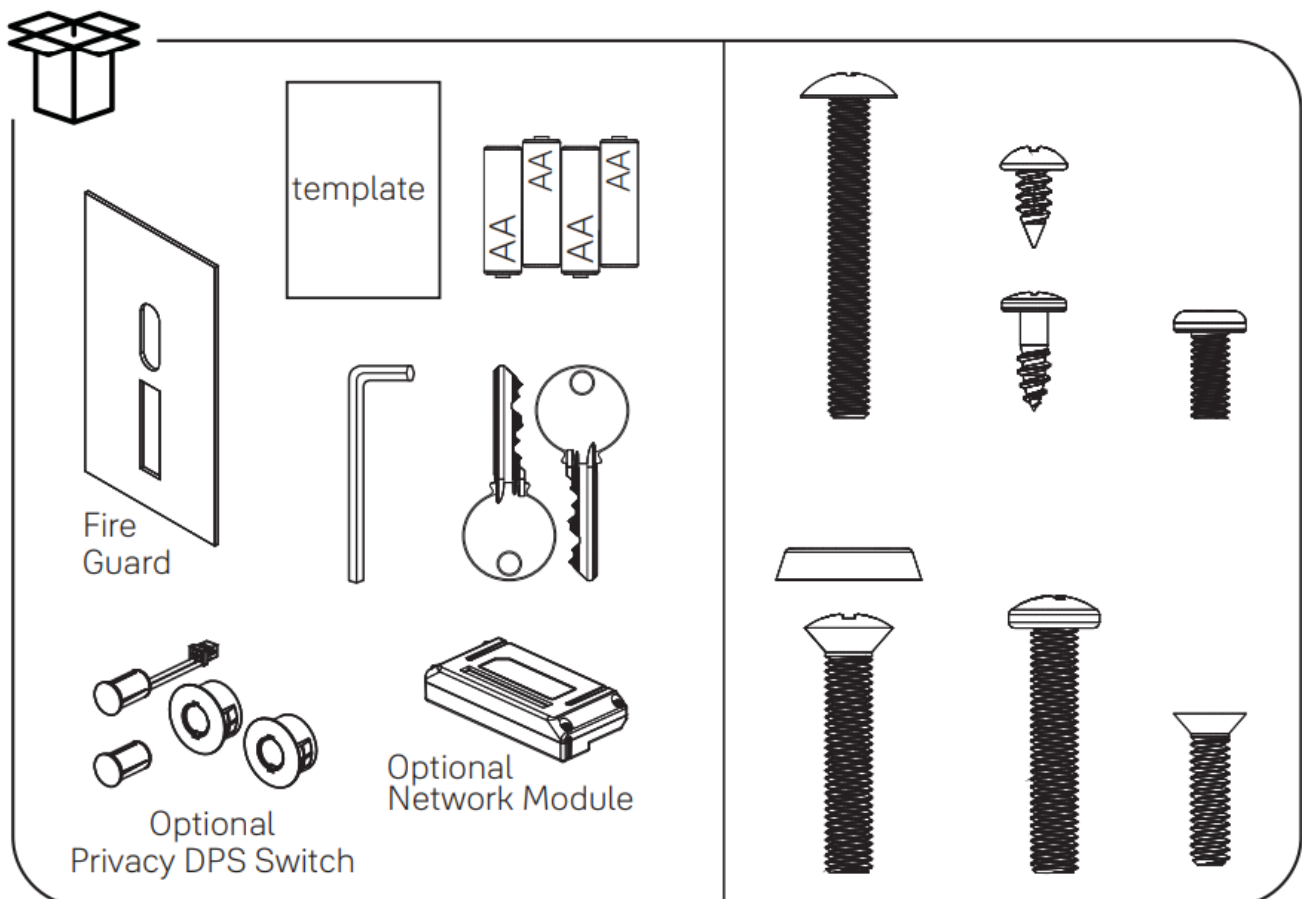
This product can expose you to lead which is known to the state of California to cause cancer and birth defects or other reproductive harm. For more information go to [www.P65warnings.ca.gov](http://www.P65warnings.ca.gov).



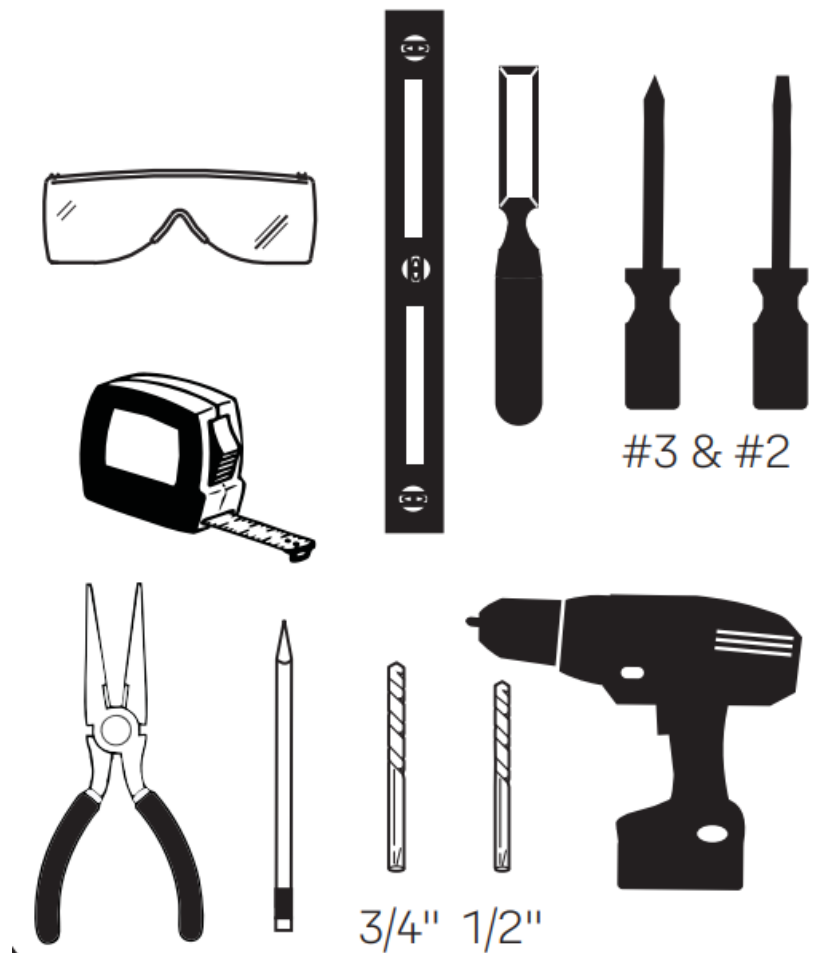
Basic Model:NTT622-ACC

Retrofitting or modifying this product may impact fire rating, safety features and warranty. Consult with code specifications to ensure compliance with all codes and ratings.

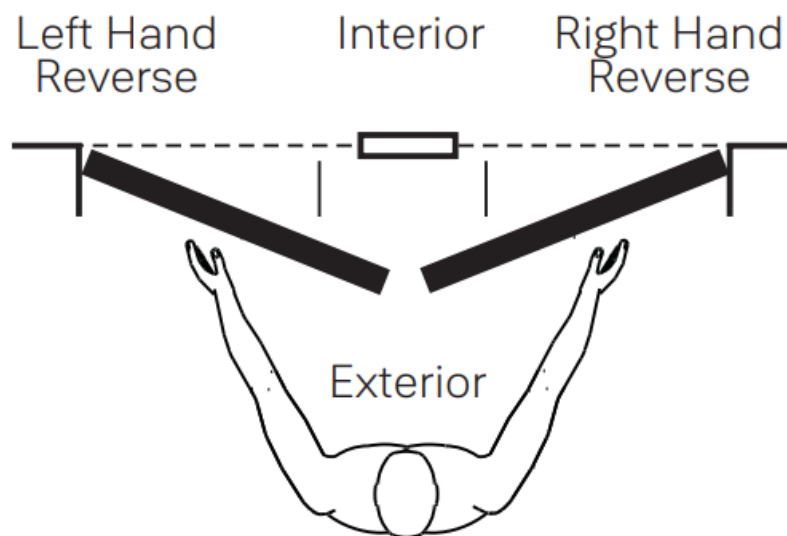
### Before YOU Begin



## Tools Needed



## Outswinging Door

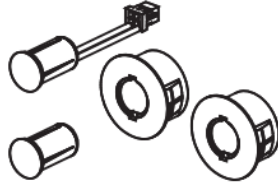


- Face a door swinging open toward you .
- If it swings open to the right, it is a right hand reverse door. If it swings opens to the left, it is a left hand reverse door.

## Door Position Switch Option

## Privacy DPS Switch

With Door Position Switch installed and door closed, all keypad functions can be disabled by Privacy Button.



### Prepare Door

#### DPS Option for Privacy Function

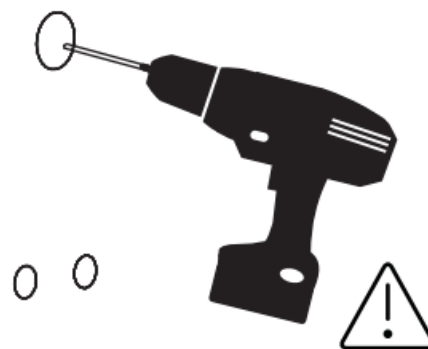
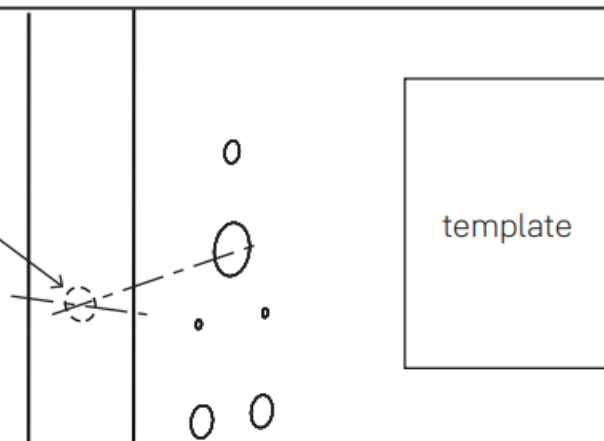
Wood Door:  
3/8" Dia. Thru to  
Hole in Door Face

\*Metal Door:  
3/4" Dia. Thru to  
Hole in Door Face



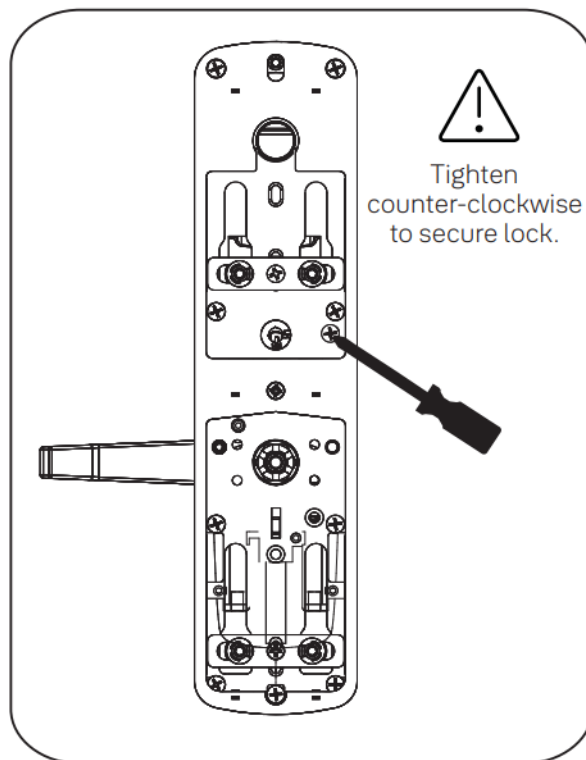
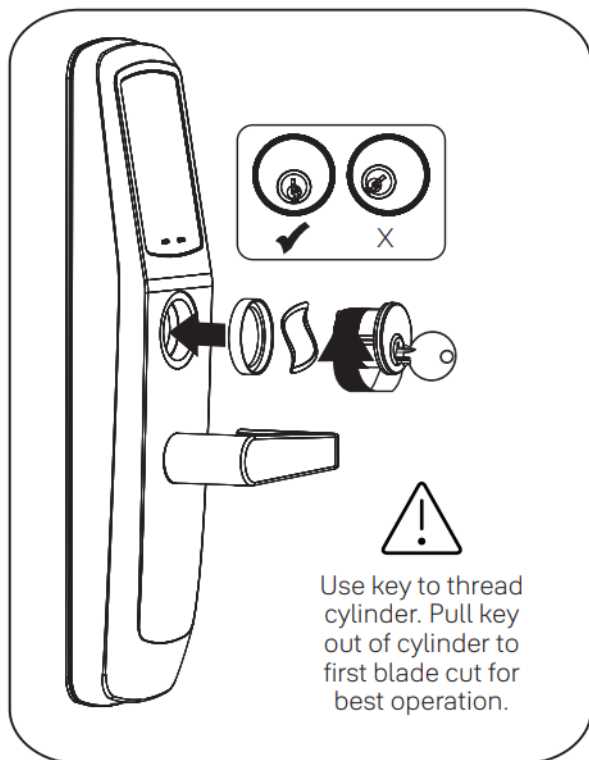
#### **\*Metal Door Installations**

Supplied plastic collar  
MUST be installed for DPS  
to function properly.



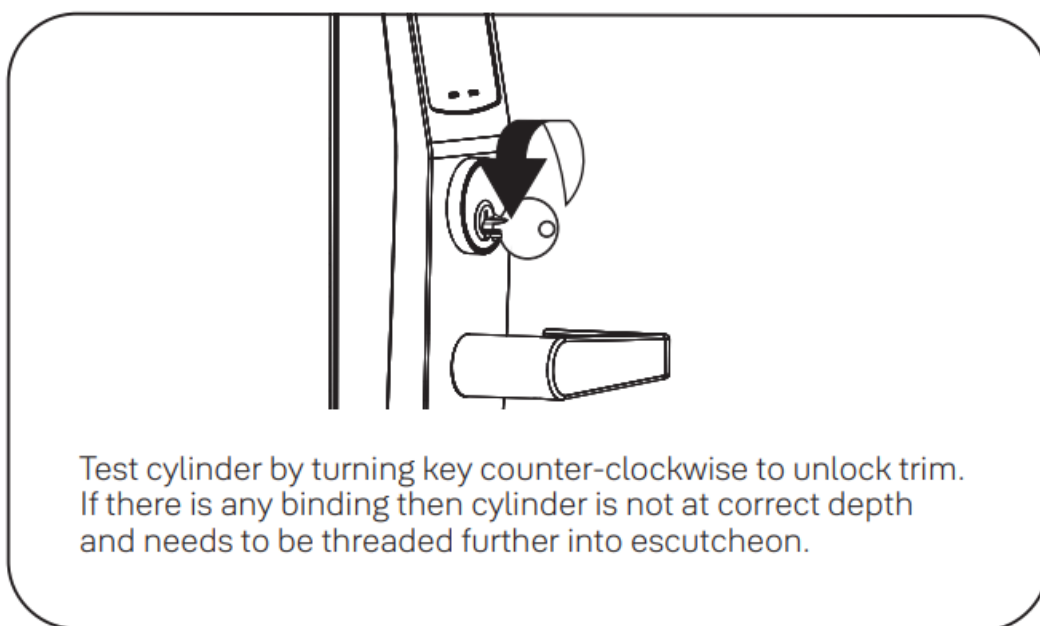
Drill holes 1/2 way thru  
door then complete  
from other side to  
prevent splitting.

### Install Cylinder



If using cylinder other than 1-1/8", a new collar must be used that is sized appropriately for cylinder length.

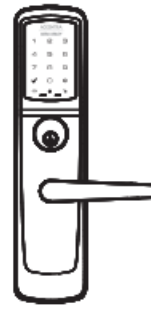
### Test Cylinder



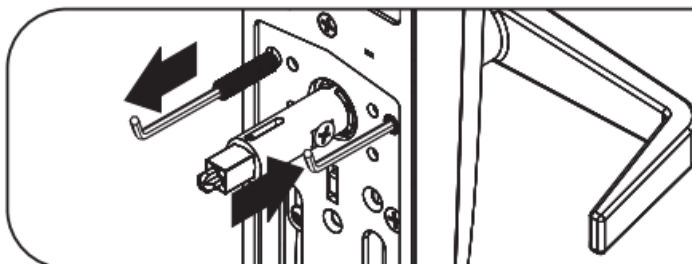
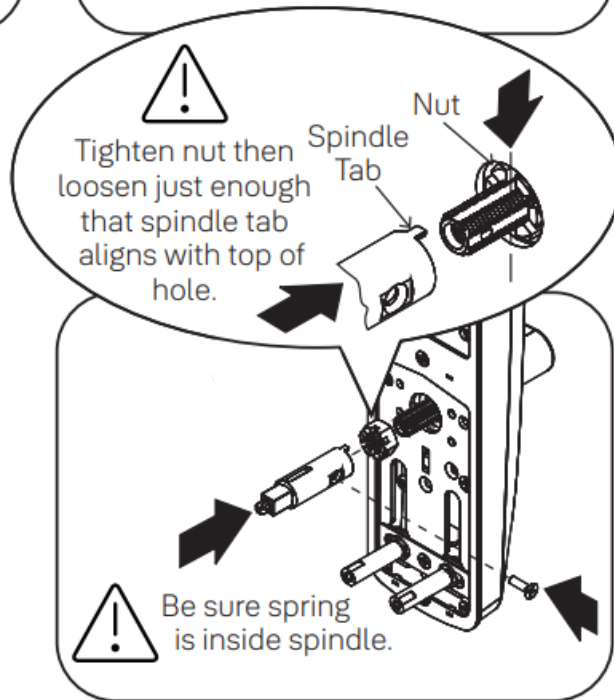
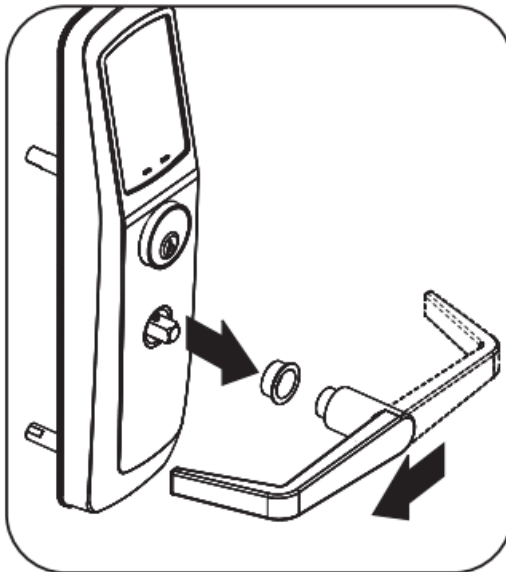
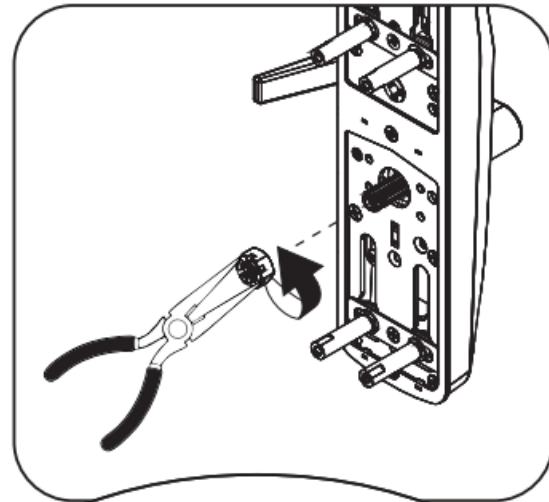
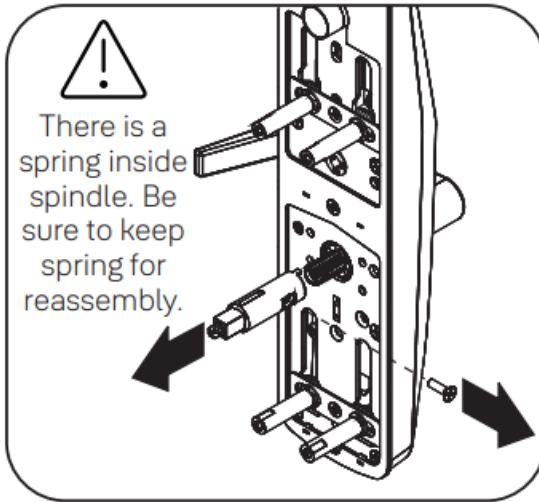
### Change Hand of Trim (if necessary)



Left Hand Reverse



Right Hand Reverse



Set screw should be located on same side as lever arm.

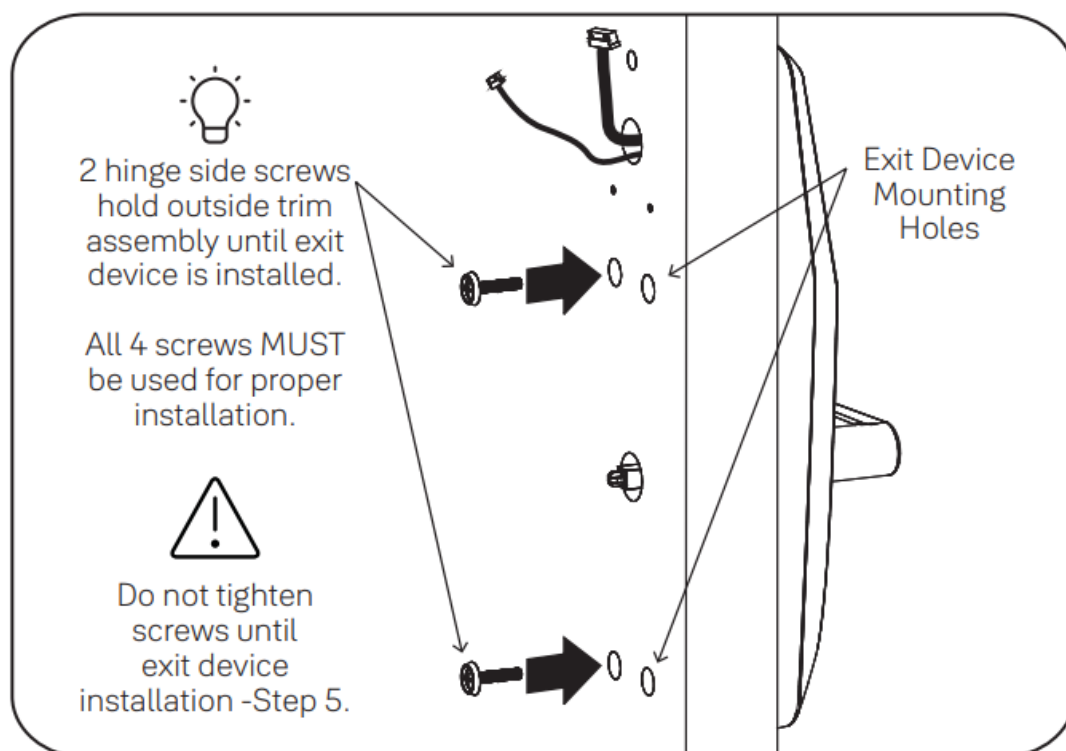
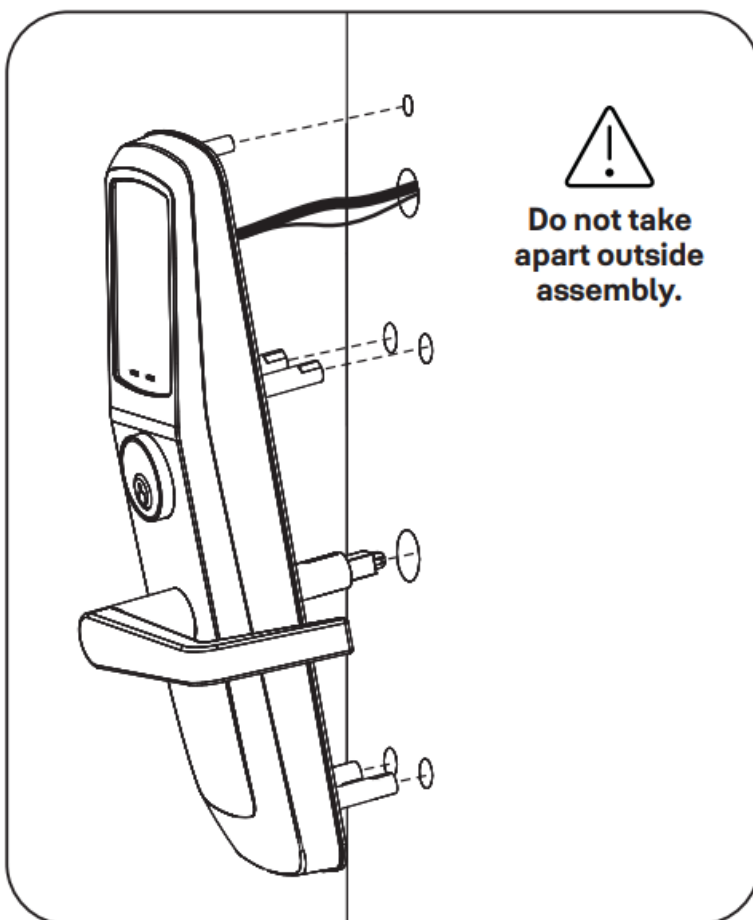
## Install Outside Trim Assembly



#10-32 x 1" OHPMS



x2

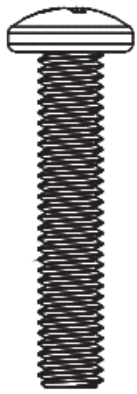


## Install Exit Device

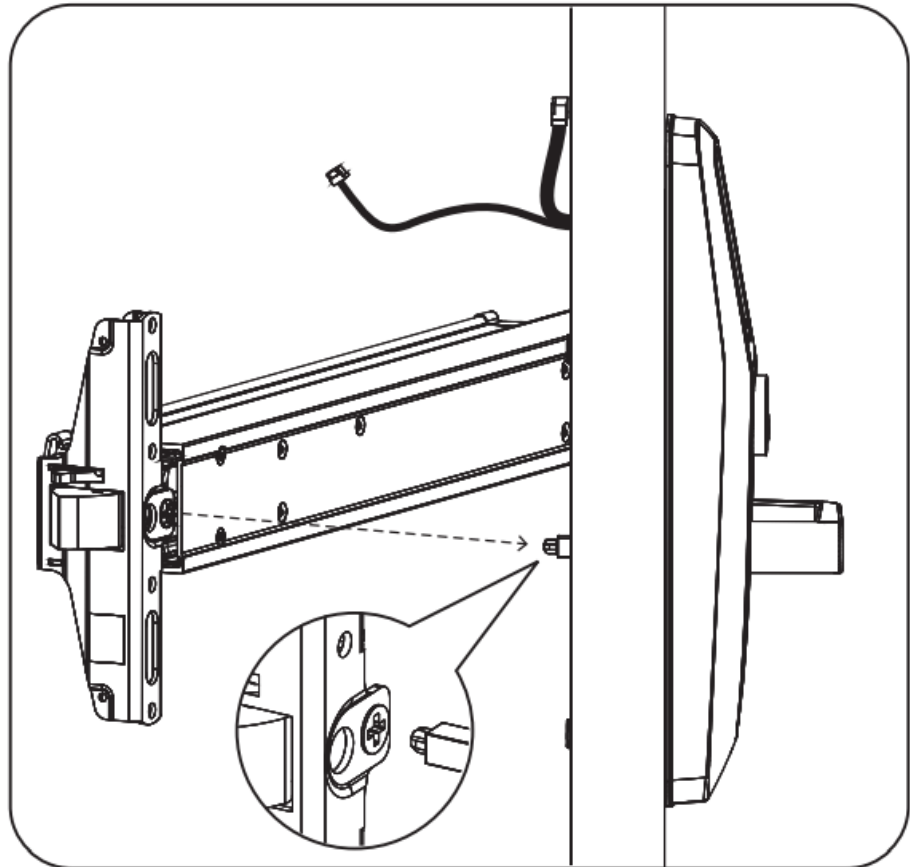




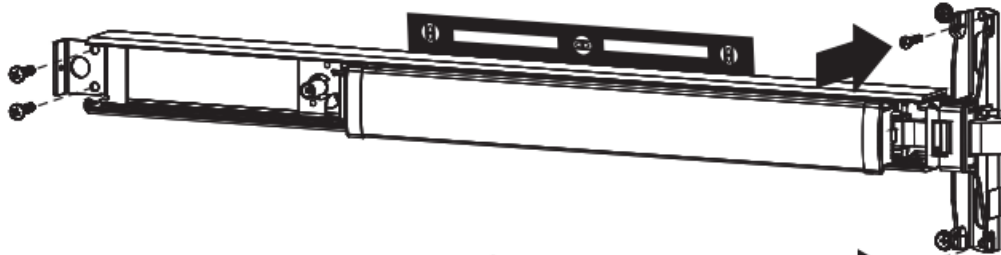
#10-32 x 1" PHMS



x2



Refer to exit device installation instructions for details of device installation.



Tighten all screws.



Test Mechanical Lock Function by Key, Lever and Keypad

**Install Strike and Optional DPS**



#10-24 PFHMS



x3

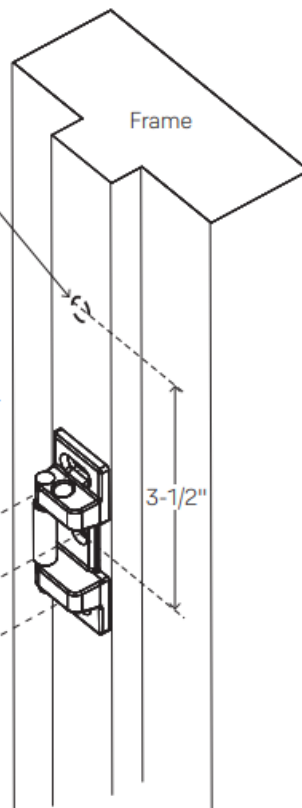
DPS Option  
for Privacy Function

\*Metal Frame:  
3/4" Dia. x 1"

See Instructions with DPS Kit



\*Supplied plastic collar **MUST**  
be installed for DPS to  
function properly.

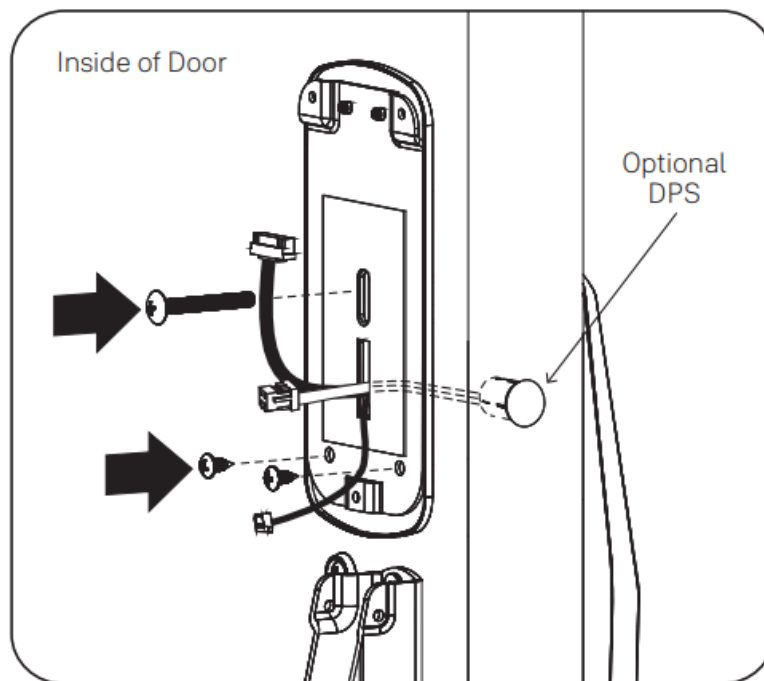
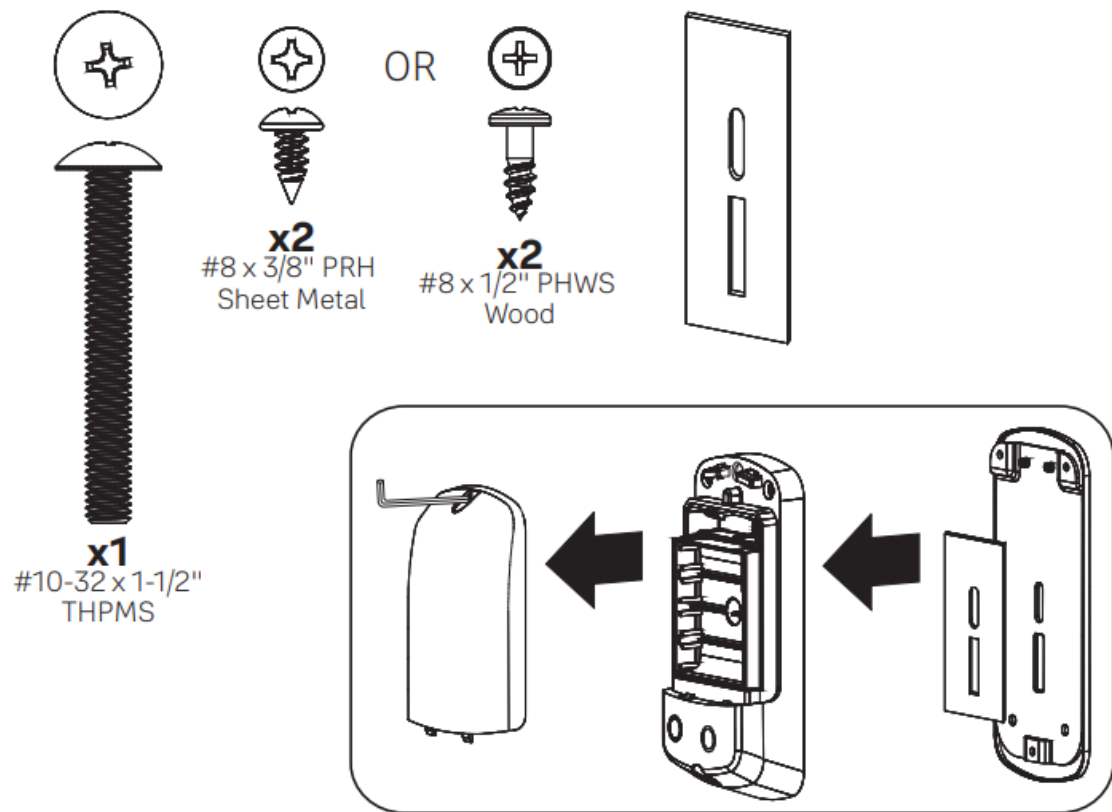


Strike must be centered with exit device bolt. For  
proper engagement, door should remain latched  
and not rattle when pushed, pulled or shaken in/out.

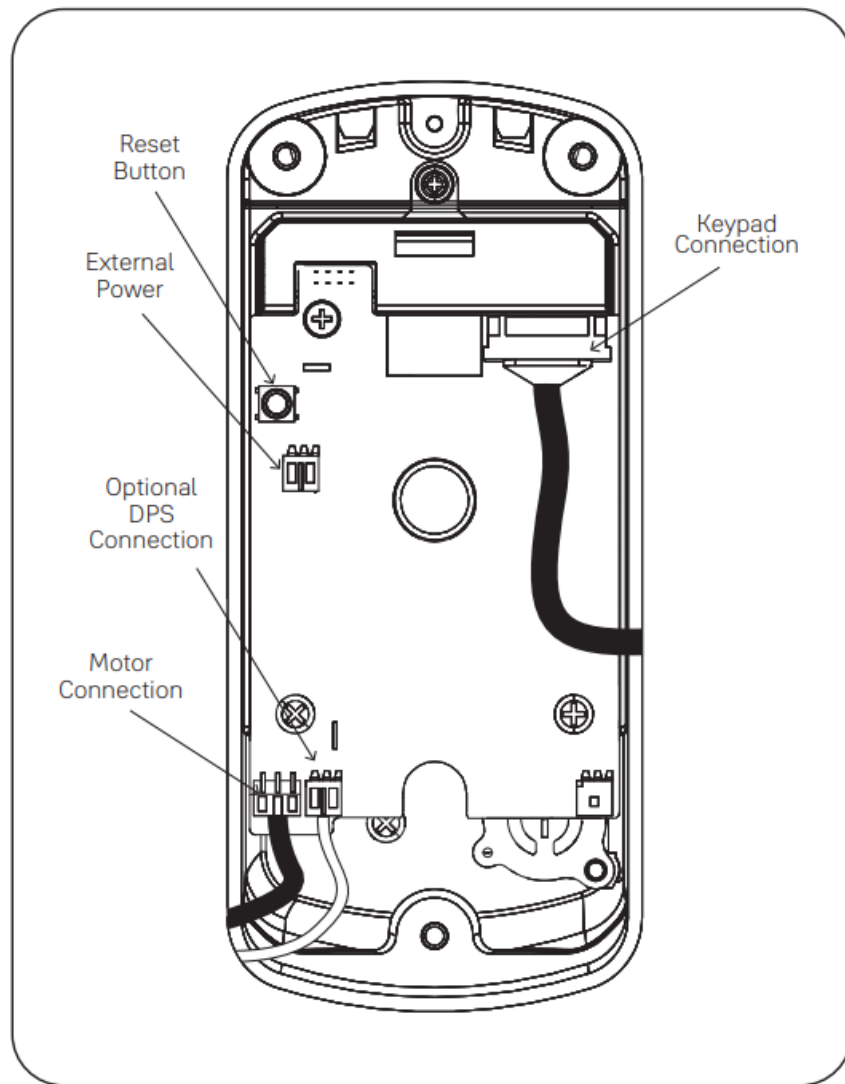


Refer to exit device installation instructions  
for details of strike installation.

## Install Inside Mounting Plate



**Attach Cables to Inside Lock**



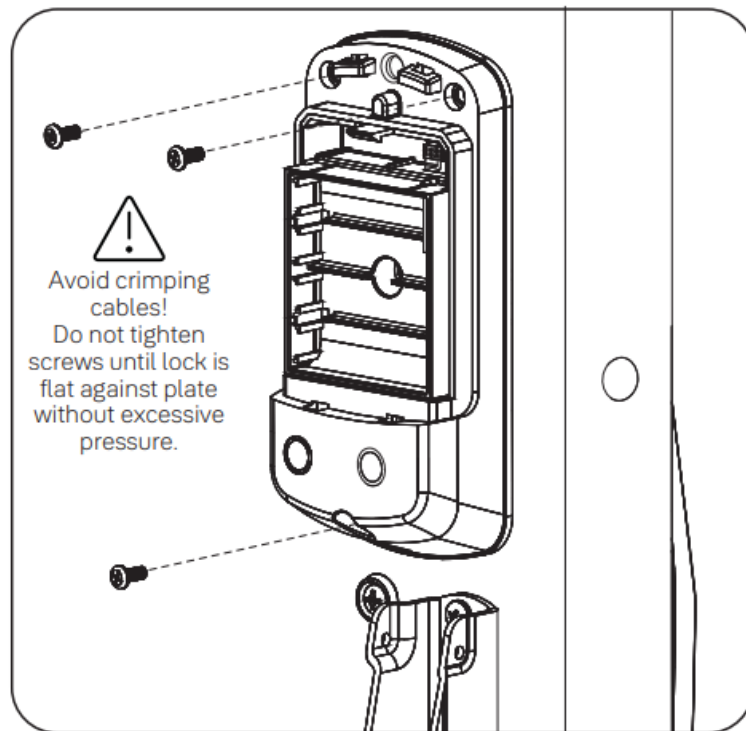
## Install Inside Lock



#8-32 x 5/16" PHMS



x3



## FCC:

This device complies with part 15 of the FCC Rules. Operation is subject to the following two conditions:

1. This device may not cause harmful interference, and
  2. This device must accept any interference received, including interference that may cause undesired operation.
- Any changes or modifications (including the antennas) to this device that are not expressly approved by the manufacturer may void the user's authority to operate the equipment.

**Note :** This equipment has been tested and found to comply with the limits for a Class B digital device, pursuant to part 15 of the FCC Rules. These limits are designed to provide reasonable protection against harmful interference in a residential installation. This equipment generates, uses and can radiate radio frequency energy and, if not installed and used in accordance with the instructions, may cause harmful interference to radio communications. However, there is no guarantee that interference will not occur in a particular installation. If this equipment does cause harmful interference to radio or television reception, which can be determined by turning the equipment off and on, the user is encouraged to try to correct the interference by one or more of the following measures:

- Reorient or relocate the receiving antenna.
- Increase the separation between the equipment and receiver.
- Connect the equipment into an outlet on a circuit different from that to which the receiver is connected.
- Consult the dealer or an experienced radio/TV technician for help.

Modifications not expressly approved by the manufacturer could void your authority to operate the equipment under FCC rules.

## Industry Canada:

This device contains licence-exempt transmitter(s)/receiver(s) that comply with Innovation, Science and Economic Development Canada's licence-exempt RSS(s). Operation is subject to the following two conditions:

## FCC and IC RF Radiation Exposure Statement:

This equipment complies with FCC and IC RF Radiation exposure limits set forth for an uncontrolled environment. This device and its antenna must not be collocated or operating in conjunction with any other antenna or transmitter.

## Support Contacts:

- 24/7 Support Email:
- [support.aehg@assaabloy.com](mailto:support.aehg@assaabloy.com)
- Technical Support Phone:
- 1-800-810-WIRE (9473)
- Monday – Thursday 8:00 AM to 6:00pm Friday 9:00 AM to 5:00 PM
- Website: <https://www.accentra-assaabloy.com>
- Email for orders: [Orders.Accentra@assaabloy.com](mailto:Orders.Accentra@assaabloy.com)

ASSA ABLOY ACCENTRA™ provides a comprehensive range of high-performance door hardware and streamlined digital access control solutions for commercial, institutional, and multi-resident facilities.

THE ASSA ABLOY GROUP is the world's leading manufacturer and supplier of locking solutions, dedicated to satisfying end-user needs for security, safety and convenience.

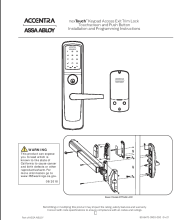
ASSA ABLOY ACCENTRA is a business associated with ASSA ABLOY Access and Egress Hardware Group, Inc., an ASSA ABLOY Group company. Copyright © 2024, ASSA ABLOY Access and Egress Hardware Group, Inc. All rights reserved. Reproduction in whole or in part without the express written permission of ASSA ABLOY Access and Egress Hardware Group, Inc. is prohibited.

## FAQ

### Q: What should I do if there is binding when testing the cylinder?

A: If there is binding when testing the cylinder, it indicates that the cylinder is not at the correct depth. In such a case, thread the cylinder further into the escutcheon until there is no binding.

## Documents / Resources

|                                                                                     |                                                                                                                                                                                                                                                                                           |
|-------------------------------------------------------------------------------------|-------------------------------------------------------------------------------------------------------------------------------------------------------------------------------------------------------------------------------------------------------------------------------------------|
|  | <p><a href="#">ASSA ABLOY NTT622-ACC nexTouch Keypad Access Exit Trim Lock</a> [pdf] User Manual<br/>NTT622-ACC, NTT600TSACC, NTT622-ACC nexTouch Keypad Access Exit Trim Lock, nexTouch Keypad Access Exit Trim Lock, Keypad Access Exit Trim Lock, Access Exit Trim Lock, Trim Lock</p> |
|-------------------------------------------------------------------------------------|-------------------------------------------------------------------------------------------------------------------------------------------------------------------------------------------------------------------------------------------------------------------------------------------|

## References

-  [P65warnings.ca.gov](https://www.p65warnings.ca.gov)
-  [Home | ASSA ABLOY ACCENTRA™, formerly Yale Commercial Locks | ASSA ABLOY ACCENTRA™](#)

[formerly Yale Commercial](#)

- [User Manual](#)

[Manuals+](#), [Privacy Policy](#)

This website is an independent publication and is neither affiliated with nor endorsed by any of the trademark owners. The "Bluetooth®" word mark and logos are registered trademarks owned by Bluetooth SIG, Inc. The "Wi-Fi®" word mark and logos are registered trademarks owned by the Wi-Fi Alliance. Any use of these marks on this website does not imply any affiliation with or endorsement.