

ASSA ABLOY
ASSA ABLOY
NTT612-ACC
Accentra
nexTouch Keypad
Access Exit Trim
Lock



ASSA ABLOY NTT612-ACC Accentra nexTouch Keypad Access Exit Trim Lock Installation Guide

[Home](#) » [ASSA ABLOY](#) » ASSA ABLOY NTT612-ACC Accentra nexTouch Keypad Access Exit Trim Lock Installation Guide 

Contents

- 1 ASSA ABLOY NTT612-ACC Accentra nexTouch Keypad Access Exit Trim Lock
- 2 Before YOU Begin
- 3 Tools Needed
- 4 Door Position Switch Option
- 5 Install Cylinder
- 6 Install Outside Trim Assembly
- 7 Install Exit Device
- 8 FCC:
- 9 Frequently Asked Questions (FAQ):
- 10 Documents / Resources
 - 10.1 References
- 11 Related Posts

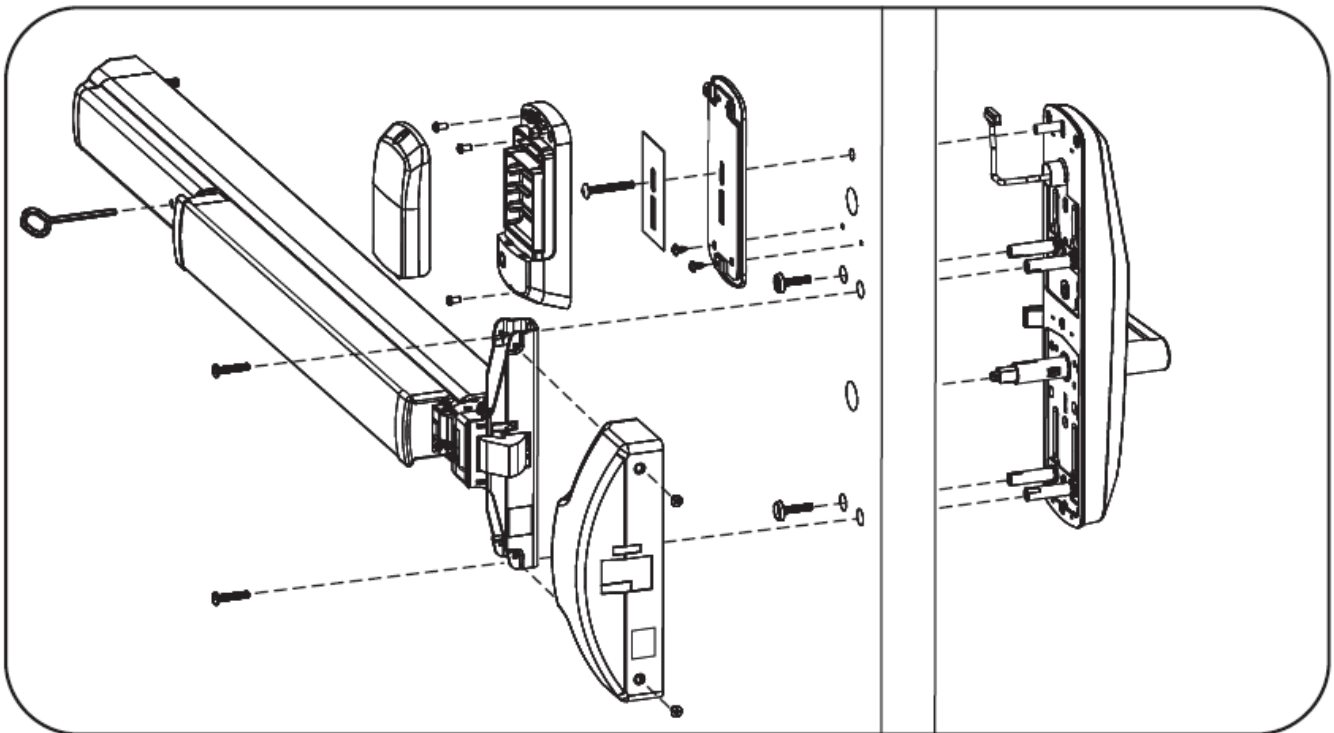
ASSA ABLOY

ASSA ABLOY NTT612-ACC Accentra nexTouch Keypad Access Exit Trim Lock

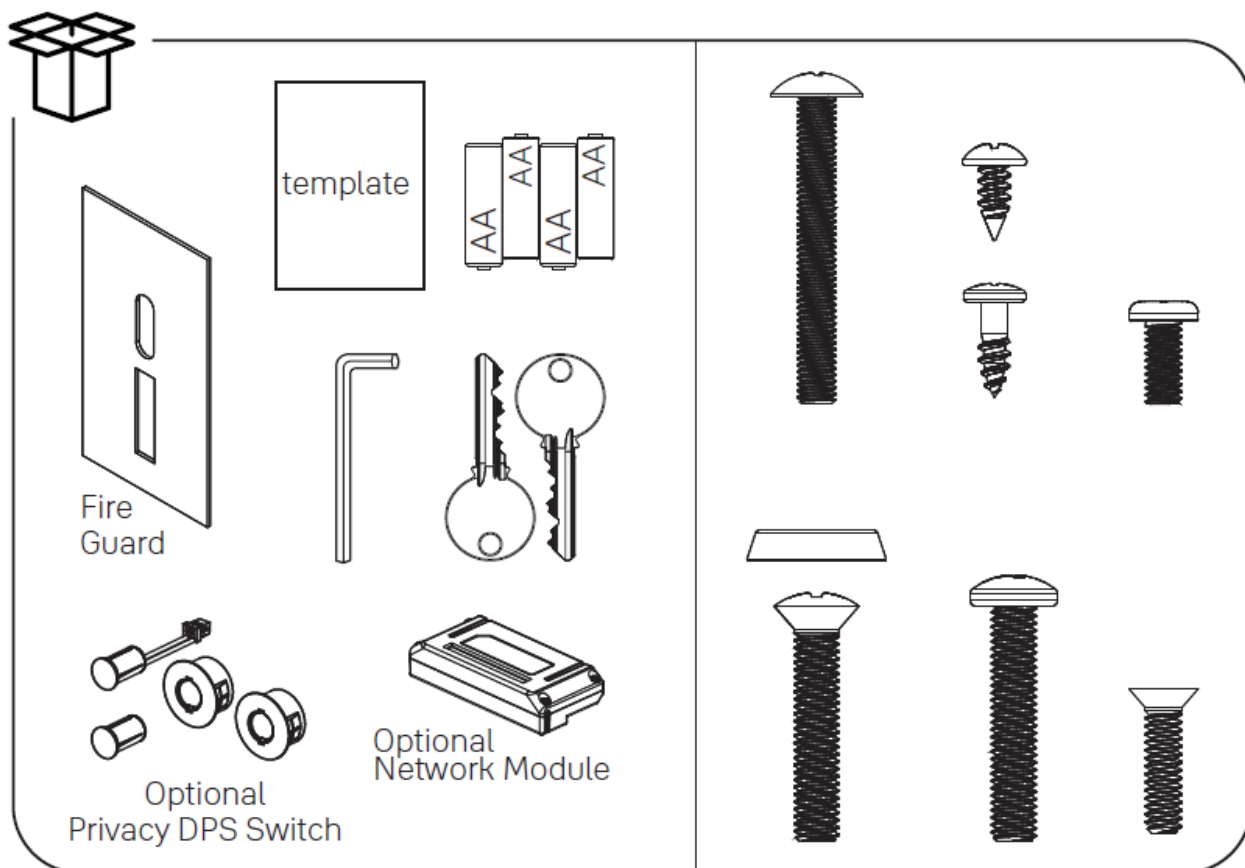


WARNING

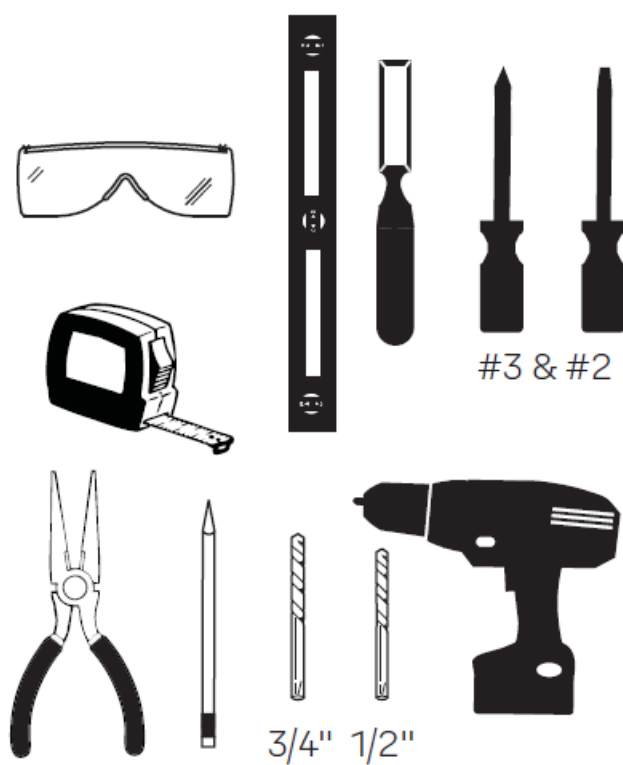
This product can expose you to lead which is known to the state of California to cause cancer and birth defects or other reproductive harm. For more information go to www.P65warnings.ca.gov.



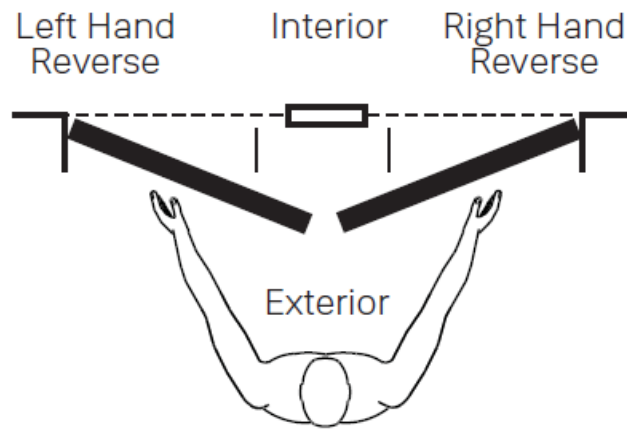
Before YOU Begin



Tools Needed



Outswinging Door

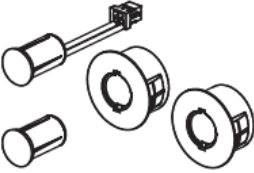


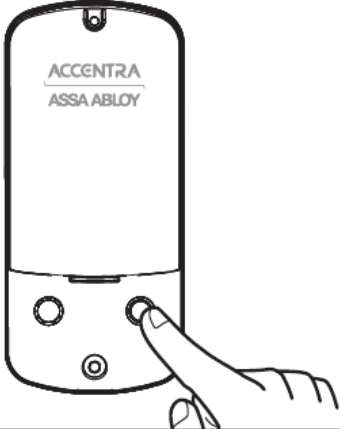
Face a door swinging open toward you .If it swings open to the right, it is a right hand reverse door. If it swings opens to the left, it is a left hand reverse door.

Door Position Switch Option

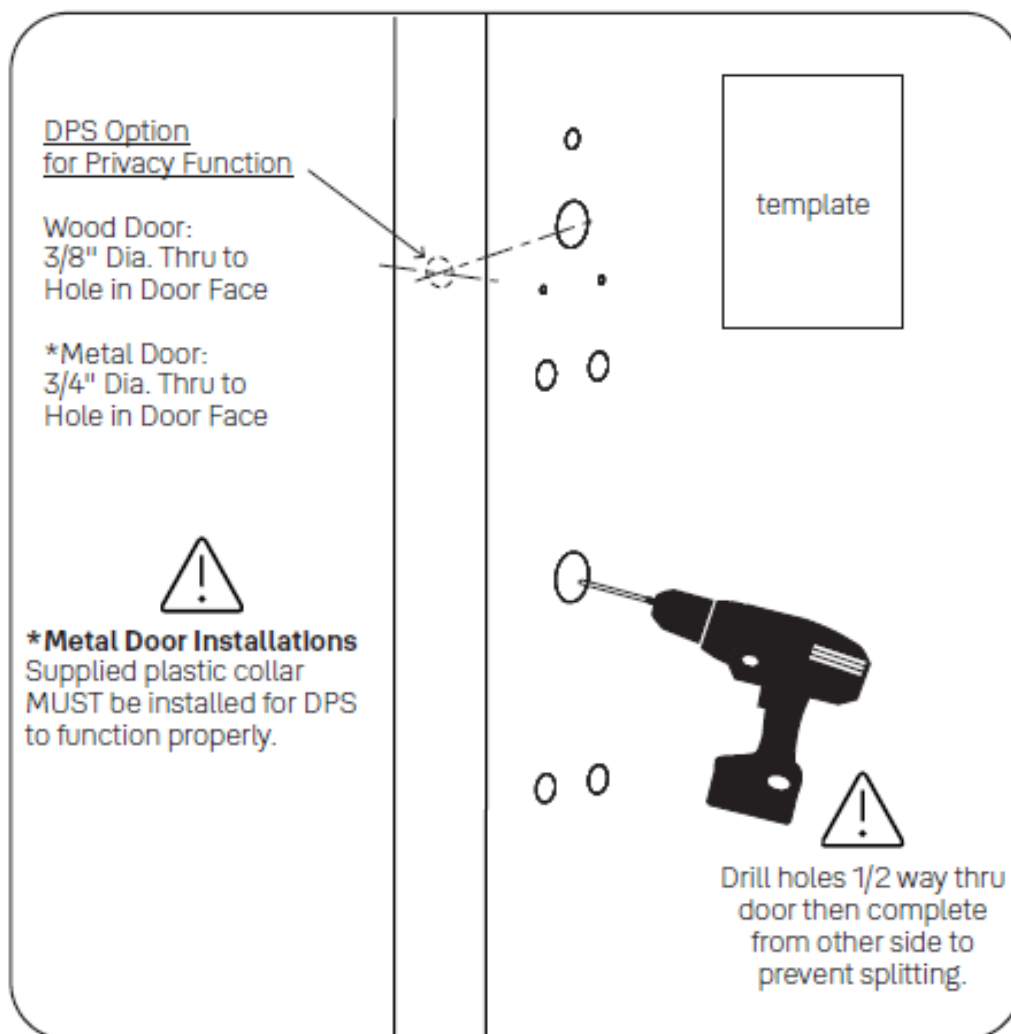
Privacy DPS Switch

With Door Position Switch installed and door closed, all keypad functions can be disabled by Privacy Button.



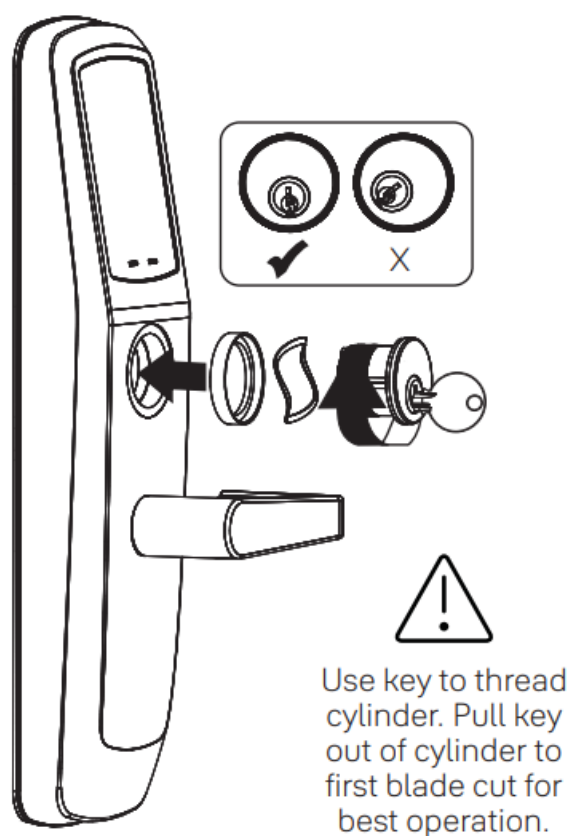


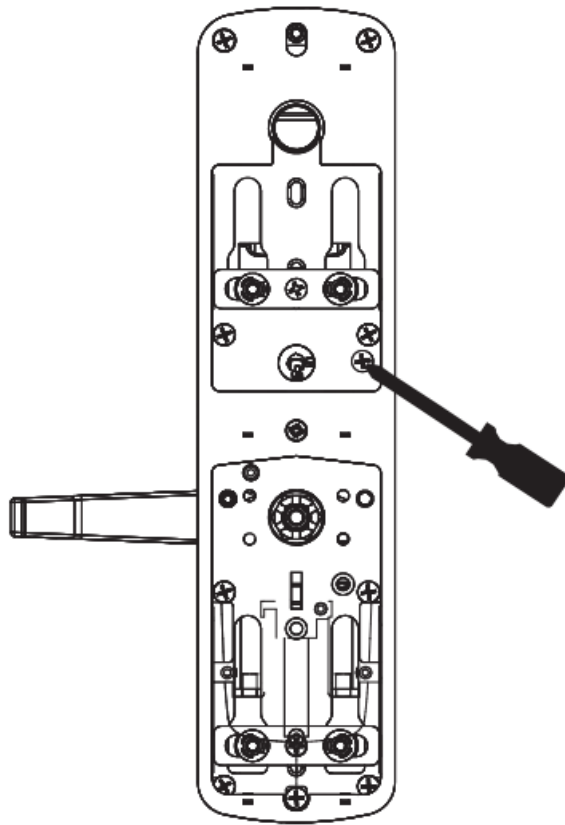
Prepare Door



Install Cylinder

•

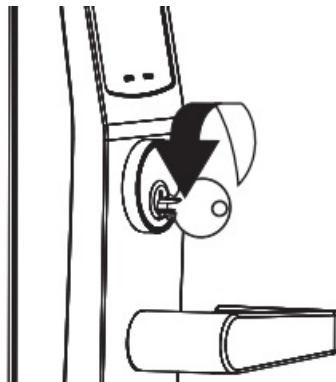




Tighten counter-clockwise to secure lock.

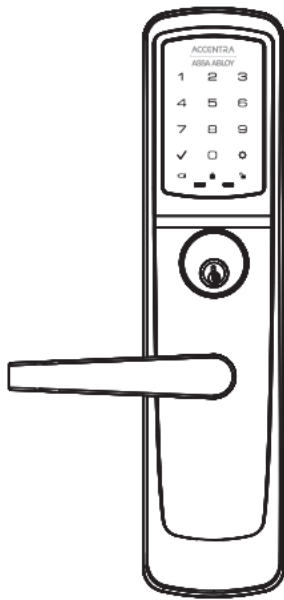
- If using cylinder other than 1-1/8", a new collar must be used that is sized appropriately for cylinder length.

Test Cylinder

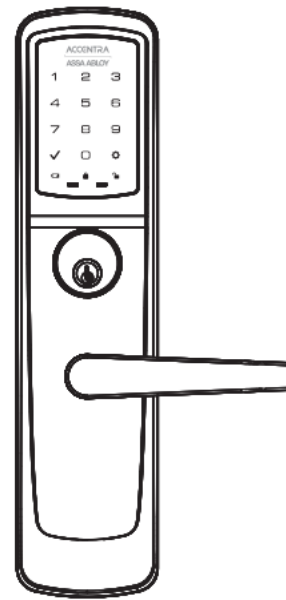


Test cylinder by turning key counter-clockwise to unlock trim. If there is any binding then cylinder is not at correct depth and needs to be threaded further into escutcheon.

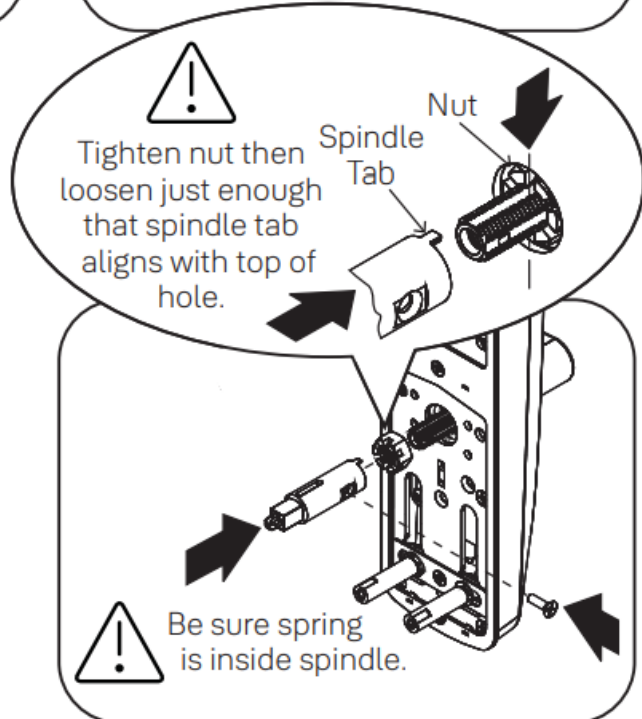
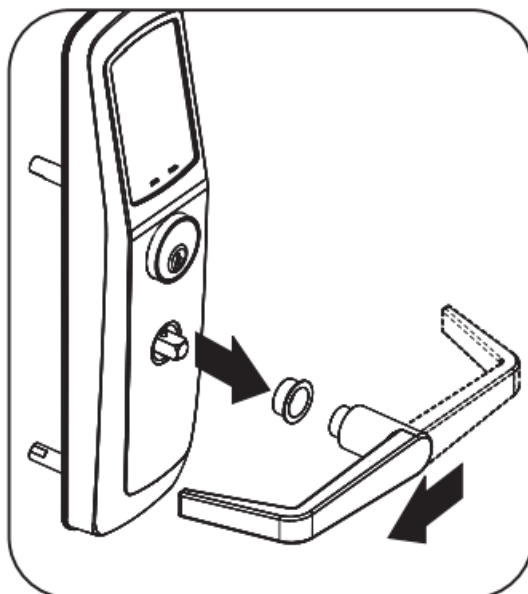
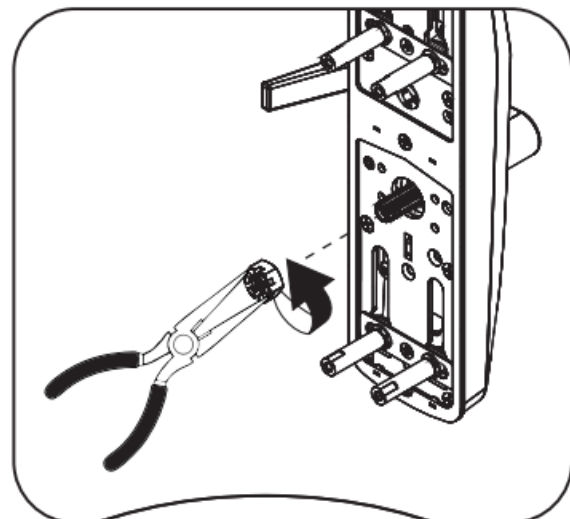
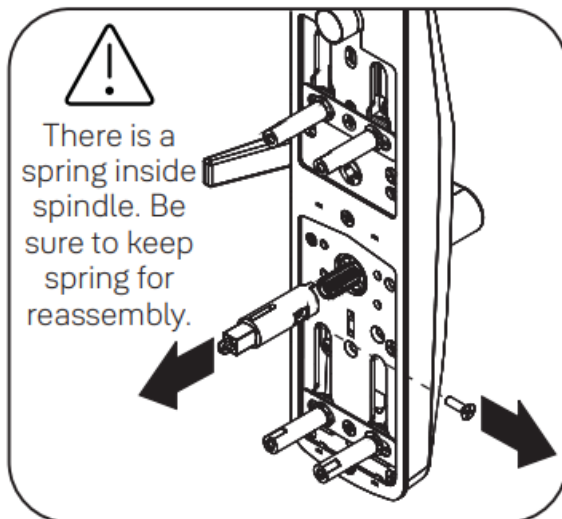
Change Hand of Trim (if necessary)

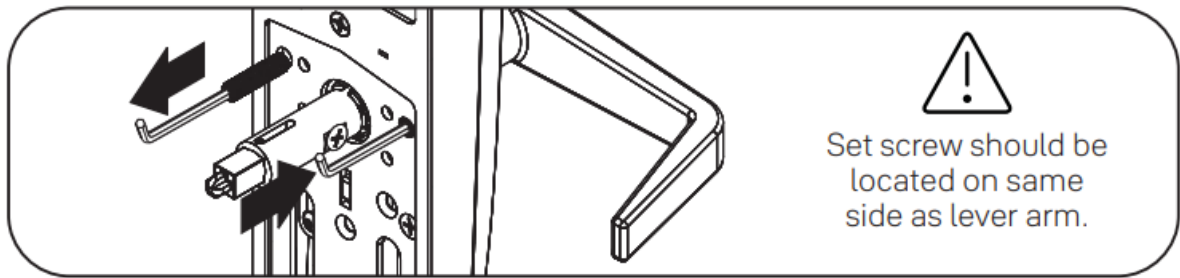


Left Hand Reverse



Right Hand Reverse





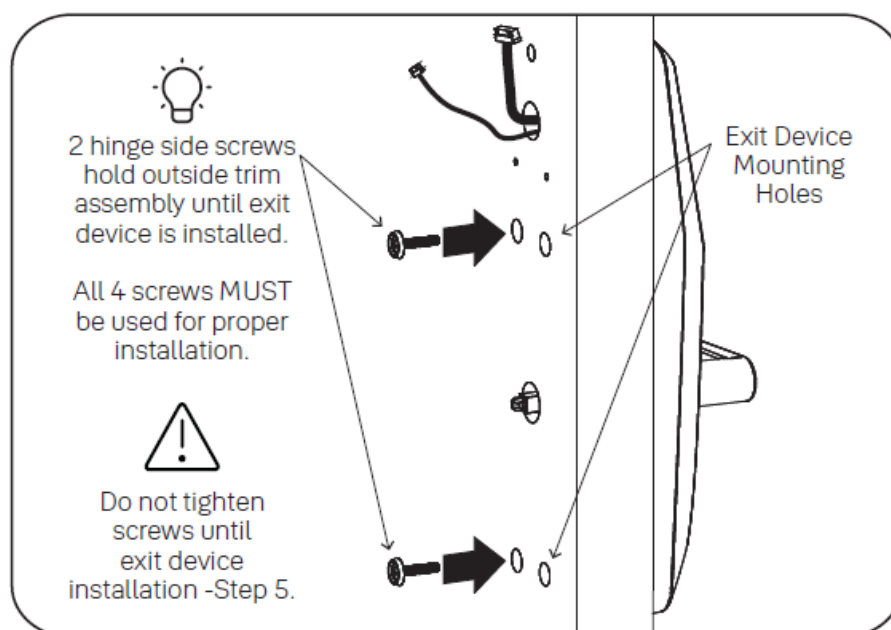
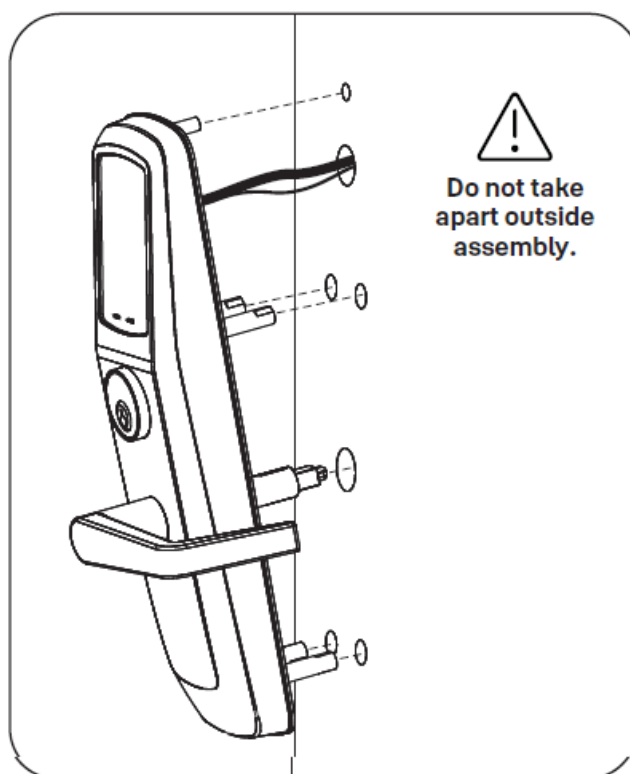
Install Outside Trim Assembly



#10-32 x 1" OHPMS



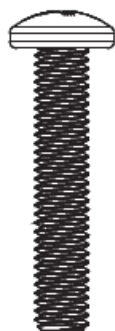
x2



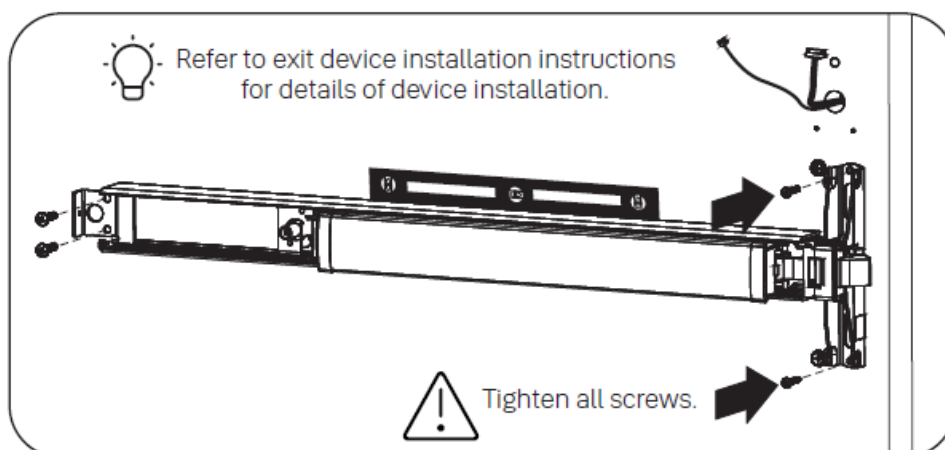
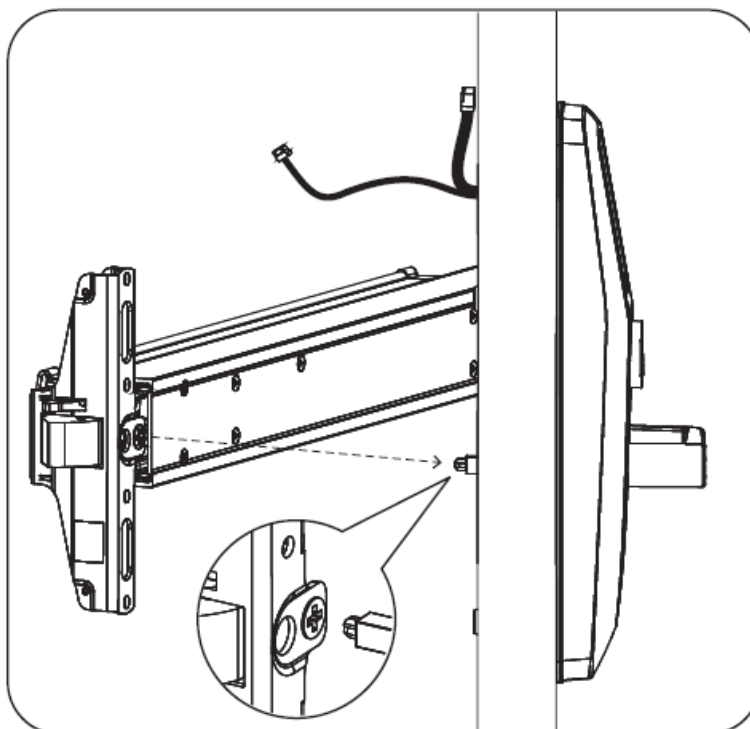
Install Exit Device



#10-32 x 1" PHMS

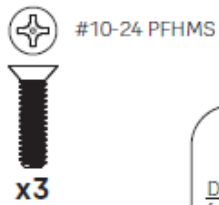


x2



Test Mechanical Lock Function by Key, Lever and Keypad

Install Strike and Optional DPS



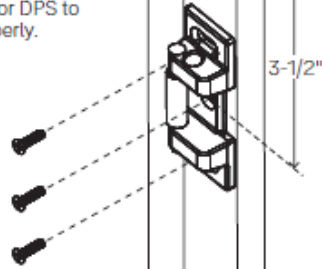
DPS Option
for Privacy Function

*Metal Frame:
3/4" Dia. x 1"

See Instructions with DPS Kit



*Supplied plastic collar **MUST**
be installed for DPS to
function properly.

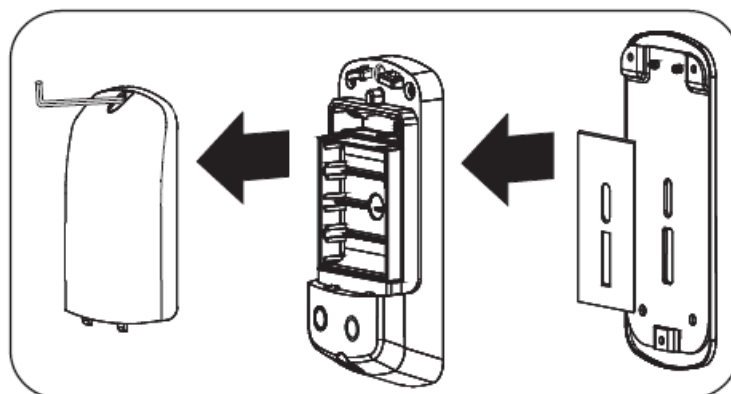
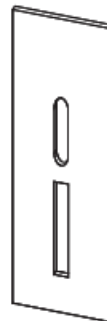
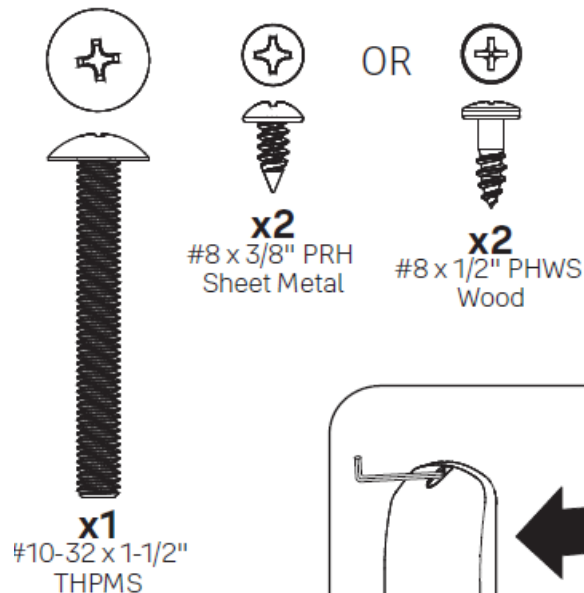


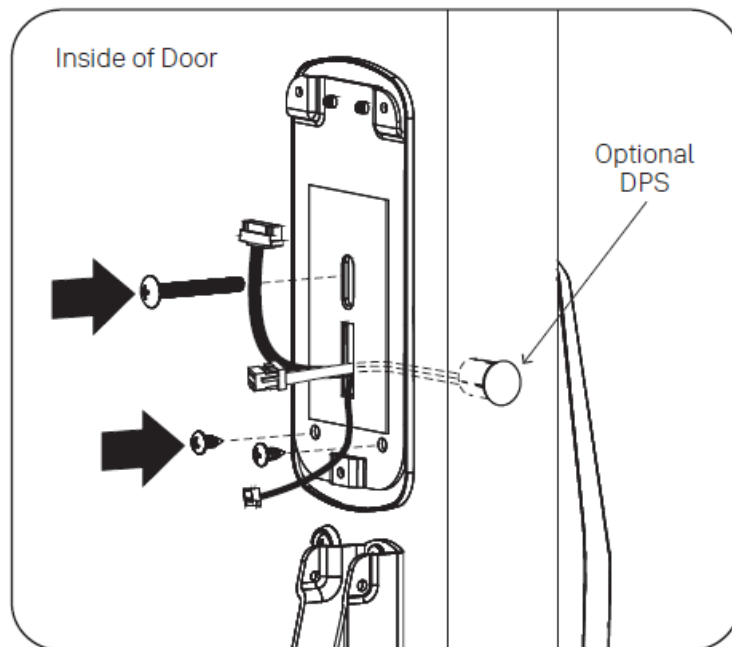
Strike must be centered with exit device bolt. For
proper engagement, door should remain latched
and not rattle when pushed, pulled or shaken in/out.



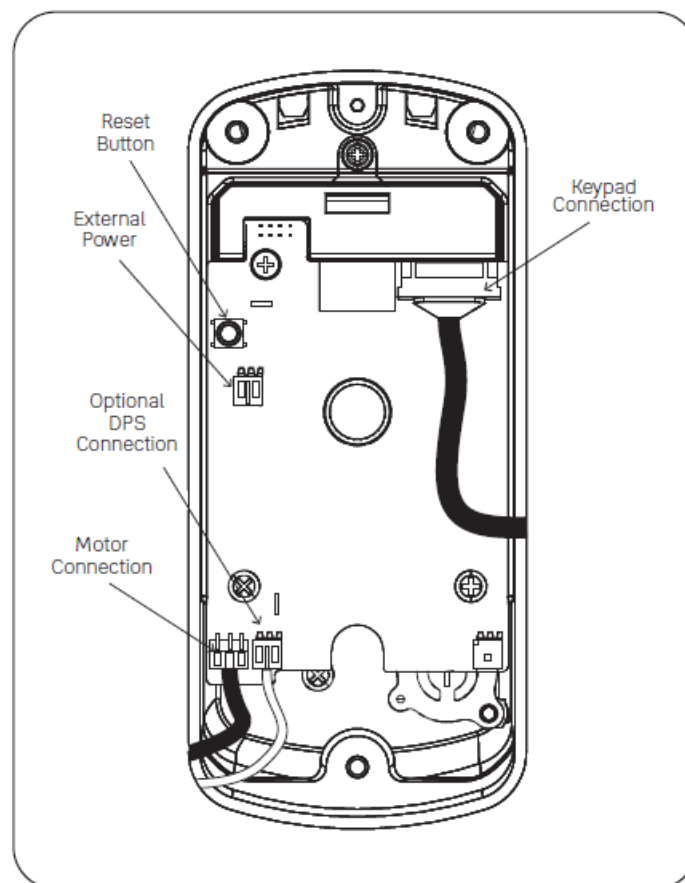
Refer to exit device installation instructions
for details of strike installation.

Install Inside Mounting Plate





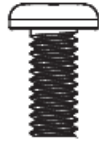
Attach Cables to Inside Lock



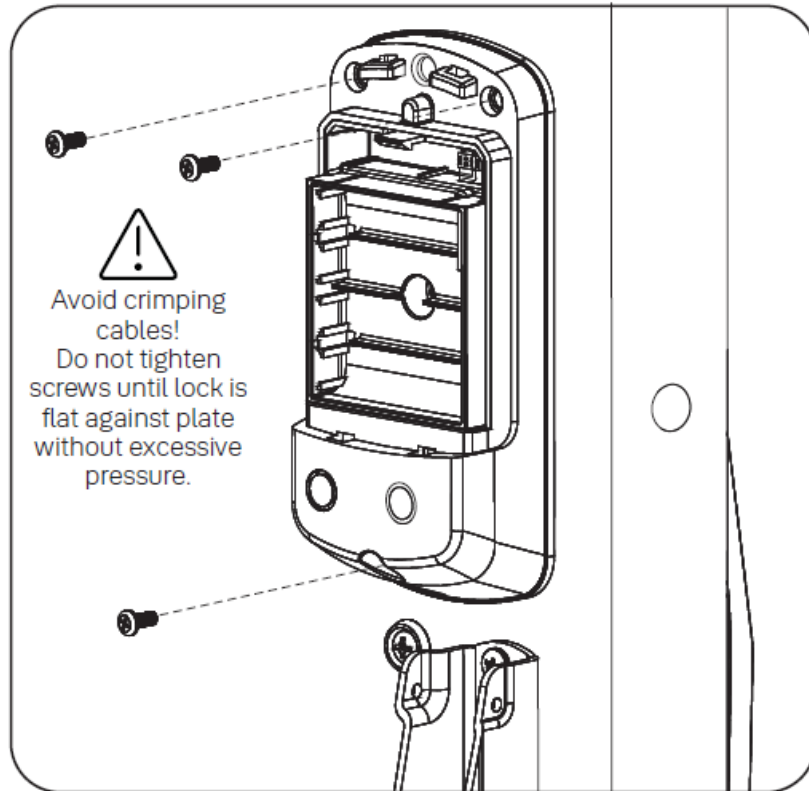
Install Inside Lock



#8-32 x 5/16" PHMS



x3



FCC:

This device complies with part 15 of the FCC Rules. Operation is subject to the following two conditions:

1. This device may not cause harmful interference, and
2. This device must accept any interference received, including interference that may cause undesired operation.

Any changes or modifications (including the antennas) to this device that are not expressly approved by the manufacturer may void the user's authority to operate the equipment.

Note : This equipment has been tested and found to comply with the limits for a Class B digital device, pursuant to part 15 of the FCC Rules. These limits are designed to provide reasonable protection against harmful interference in a residential installation. This equipment generates, uses and can radiate radio frequency energy and, if not installed and used in accordance with the instructions, may cause harmful interference to radio communications. However, there is no guarantee that interference will not occur in a particular installation. If this equipment does cause harmful interference to radio or television reception, which can be determined by turning the equipment off and on, the user is encouraged to try to correct the interference by one or more of the following measures:

- Reorient or relocate the receiving antenna.
- Increase the separation between the equipment and receiver.
- Connect the equipment into an outlet on a circuit different from that to which the receiver is connected.

- Consult the dealer or an experienced radio/TV technician for help.

Modifications not expressly approved by the manufacturer could void your authority to operate the equipment under FCC rules.

Industry Canada:

This device contains licence-exempt transmitter(s)/receiver(s) that comply with Innovation, Science and Economic Development Canada's licence-exempt RSS(s). Operation is subject to the following two conditions:

FCC and IC RF Radiation Exposure Statement:

This equipment complies with FCC and IC RF Radiation exposure limits set forth for an uncontrolled environment. This device and its antenna must not be collocated or operating in conjunction with any other antenna or transmitter.

Support Contacts:

- 24/7 Support Email:
- support.aehg@assaabloy.com
- Technical Support Phone:
- 1-800-810-WIRE (9473)
- Monday – Thursday 8:00 AM to 6:00pm Friday 9:00 AM to 5:00 PM
- Website: <https://www.accentra-assaabloy.com>
- Email for orders: Orders.Accentra@assaabloy.com

ASSA ABLOY ACCENTRA™ provides a comprehensive range of high-performance door hardware and streamlined digital access control solutions for commercial, institutional, and multi-resident facilities.

THE ASSA ABLOY GROUP is the world's leading manufacturer and supplier of locking solutions, dedicated to satisfying end-user needs for security, safety and convenience.

ASSA ABLOY ACCENTRA is a business associated with ASSA ABLOY Access and Egress Hardware Group, Inc., an ASSA ABLOY Group company. Copyright © 2024, ASSA ABLOY Access and Egress Hardware Group, Inc. All rights reserved. Reproduction in whole or in part without the express written permission of ASSA ABLOY Access and Egress Hardware Group, Inc. is prohibited.

Frequently Asked Questions (FAQ):

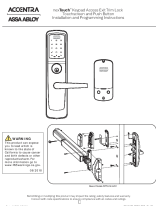
- **Q: Can this product be used on both wood and metal doors?**

A: Yes, the product is designed for both wood and metal door installations. Specific instructions are provided for each type of door.

- **Q: How can I disable all keypad functions using the Privacy DPS Switch?**

A: With the Door Position Switch installed and the door closed, all keypad functions can be disabled by pressing the Privacy Button.

Documents / Resources

	<p>ASSA ABLOY NTT612-ACC Accentra nexTouch Keypad Access Exit Trim Lock [pdf] Installation Guide</p> <p>NTT600PBACC, NTT612-ACC, NTT612-ACC Accentra nexTouch Keypad Access Exit Trim Lock, Accentra nexTouch Keypad Access Exit Trim Lock, nexTouch Keypad Access Exit Trim Lock, Keypad Access Exit Trim Lock, Access Exit Trim Lock, Trim Lock</p>
--	---

References

- [P65warnings.ca.gov](https://www.p65warnings.ca.gov)
- [Home | ASSA ABLOY ACCENTRA™, formerly Yale Commercial Locks | ASSA ABLOY ACCENTRA™, formerly Yale Commercial](#)
- [User Manual](#)

[Manuals+](#), [Privacy Policy](#)

This website is an independent publication and is neither affiliated with nor endorsed by any of the trademark owners. The "Bluetooth®" word mark and logos are registered trademarks owned by Bluetooth SIG, Inc. The "Wi-Fi®" word mark and logos are registered trademarks owned by the Wi-Fi Alliance. Any use of these marks on this website does not imply any affiliation with or endorsement.