

**ASSA ABLOY**  
Integral Wireless  
Access Control



## ASSA ABLOY Integral Wireless Access Control Instructions

[Home](#) » [ASSA ABLOY](#) » ASSA ABLOY Integral Wireless Access Control Instructions 

### Contents

- [1 ASSA ABLOY Integral Wireless Access Control](#)
- [2 Product Information](#)
- [3 Features / Overview](#)
- [4 Integral Wireless Access Control](#)
  - [4.1 Integral RFID Proximity Identification Technology](#)
- [5 Integral Access Management Components](#)
- [6 Door Access Controller Wall Reader](#)
- [7 Portable Programmer](#)
- [8 Integral Access Control Management System](#)
- [9 Integral Product Reference Codes Functions](#)
- [10 Warranty](#)
- [11 Documents / Resources](#)
  - [11.1 References](#)
- [12 Related Posts](#)

# ASSA ABLOY

**ASSA ABLOY Integral Wireless Access Control**



## Product Information

- Access Control
- Common access points, and emergency exits



- RFID Technology
- User-friendly Software



## Features and Flexibility

ASSA ABLOY's Integral Wireless Access Control locking solution provides you with all the features you will need to manage your security requirements and provide peace of mind to all users. Our locking solutions offer total flexibility, adapting our solutions to your specific needs.

- Cards supplied in Plain White with custom printing available.

## Features / Overview

- A cost-effective, simple to use, simple to set up, offline, Data-on-Card, Access Control System designed for commercial & accommodation facilities.
- A wire-free system – no wiring required, saving considerable installation time and money, making it ideal for both new and existing applications.
- Uses RFID cards/fobs for access, that can be easily programmed to allow or restrict access to certain areas or rooms – eliminates the risks and associated costs with managing, losing, or having keys stolen.
- Data collected provides an audit trail of who & when each lock is used
- Simple to retrofit and install – the escutcheon uses the current Australian mortice lock footprint (3772NOHDSS)
- Easily expand the system as required – up to 9999 doors & unlimited users
- Available in two simple-to-use management options:
  - "Accommodation" allows you to manage the users and doors much the same as a typical Hotel system where the doors are predefined, and users are given access according to the length of their stay.
  - "Commercial" management software operates much the same but allows scheduling and calendar events, suited to a typical commercial building application.
- Simple solution requiring no IP networking knowledge.



## **Integral Wireless Access Control**

### **Integral RFID Proximity Identification Technology**

#### **Product Features**

- Stand-alone Electronic Wireless Access Control lockset with RFID Proximity reader
- Powered by 4xAA batteries that provide up to 60,000 operations
- 992 event audit trail
- Stainless Steel Escutcheon
- Uses an Australian Mortice lock (3772NOHDSS). 530 tubular latch option is also available
- Panic release function – the latch is automatically retracted by the inside handle for easy egress in emergencies
- 3-point steel latch construction with an antifriction mechanism
- High-quality card reader that reads with optimal accuracy
- Door Opening Time – Open the door after pressing the handle, automatically locks within 5 seconds
- Electronic Privacy – Denies access when privacy is required
- Passage mode – Gives the ability to leave the door in the unlocked state
- Available with or without key override
- The lever is certified by AS1428.1-2009 Design for Access and mobility
- Fire Rated

#### **Under Voltage Indication:**

An early warning was given for low batteries – units will continue to operate for approximately 50 times until such time the batteries can be changed.



## Specifications

- **Anti-Static Interference** >15000V
- **Working Humidity** 20%-98%
- **Working Temperature** -20°C – +70°
- **RFID Card Type** ISO 14443A MIFARE®
- **Frequency** 13.56MHz
- **Induction Distance** Approx. 30mm
- **Power** 4 x AA Alkaline Batteries

## Integral Access Management Components

### Access Cards

- **User Cards:** Opens locks (when granted applicable access rights) within the “Access Control System” within a specific period. The access rights for each user are programmed by the software and encoder User cards will not open doors that have the internal ‘Privacy mode’ set.
- **Floor Card:** Unlocks all rooms of a specific floor in a valid period, except if the room is locked from within (Privacy).
- **Zone Card:** Unlocks all rooms of a specific zone (building) in a valid period, except if the room is locked from within (Privacy).
- **Global Access Card:** Unlocks all doors in a valid period, except if the room is locked from within (Privacy).
- **Security Card:** Unlocks all doors in a valid period, including doors that have been locked from within (Privacy).
- **One-time User Card:** Unlocks selected door during a valid period but expires after use.

## Access Management Setting Cards

- **Locks Identification Card**: Set the Address ID of the door lock
- **Lock Real-Time Card**: Set the door lock “real-time”
- **Recorder Card**: Reads the Audit Trail Information from the locking devices
- **Cancel Staff Card**: Cancels lost staff cards (Floor, Zone, Global, Security) Software Management Cards
- **SWA (Software Activation Card)**: Activates the card issuing system (Management Software) & Initialises the Locks.
- **ICCARD**: Additional SWA Card if SWA card is lost or more than one is required on the same site.



\* Cards supplied in Plain White with custom printing available.

## Encoder

- Programs all Cards Types except for the Special IC card, which is used to activate the software management system
- Plug-in-and-Play USB Card Encoder
- Easily learn and use: it easily assigns new users and cards, it modifies them or invalidates lost or stolen cards
- Reads the audit trail of locks when cards are presented
- Windows® based



## Specifications

- Colour Black
- Material Flame Retardant ABS

- Power Supply By USB
- Operating Current 100mA
- RF Frequency 13.56MHz
- Size 31mm x 98mm 125mm

### **Door Access Controller Wall Reader**

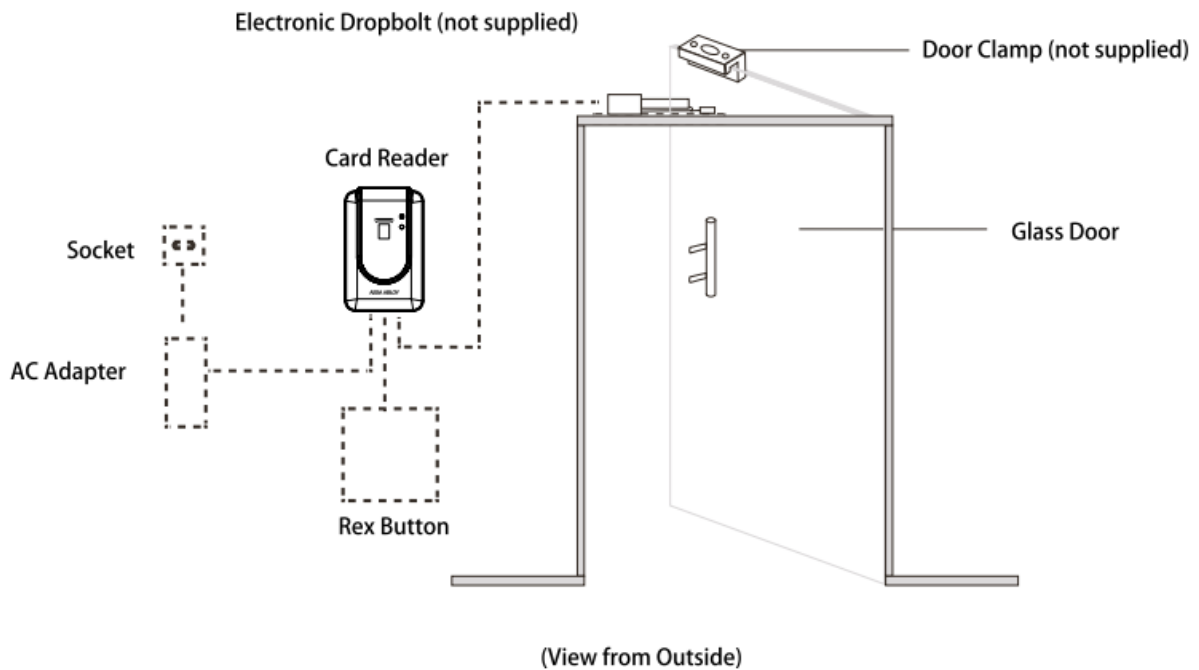
- For doors where Integral escutcheon are not fitted
- RFID Door Access Controller Wall Reader can be used on an entry door as part of the complete wireless access control system. It can also be used on any other common area doors in the building
- The RFID Door Access Controller Wall Reader can be used with a number of different electronic lock types. Compatible with electronic magnets, drop bolts, motorised locks and electric strikes



### **Energy Saving Device**

- For minimizing energy consumption in a room when unoccupied.
- The intelligent energy saver controls and manages the electrical installation of the room. It allows the electricity in the room to be switched on after inserting a valid card and during the time that the card is in the energy saver.
- It only works with Integral user cards and it incorporates RFID proximity ISO 14443A MIFARE® technology.





## Specifications

- Colour Black
- Power Supply 12VDC
- Current Consumption 100mA
- Card Type Mifare Card (MACS) (Only operates with ASSA ABLOY Integral System Cards)
- Read Card Distance 20 ~ 50mm
- Audit Trail 2000 Events
- Input Rex button signal
- Output Dry node 1 group (NO/NC/COM)

## Working Environment

- **Working Temperature:** -10 ~ 70°C
- **Storage Temperature:** -25 ~ 125°C
- **Working Humidity:** 5% ~ 95%

## Portable Programmer

### NFC Data Collection/Configuration

- For configuring and collecting data from each lock
- Synchronise lock data with the Integral software
- Connects to PC using USB cable
- Extract entry data (audit trail) from the locks (total of 2000 events in memory)
- Can extract multiple locks without uploading
- Upload all records to the Integral software



- Easily set the time of the locks
- Checks card recorded information
- Check lock configuration



## Specifications

- Colour Black
- Communications USB/NFC
- Material Flame retardant ABS
- Working Voltage 3.0V (2pcs AA batteries)
- Quiescent Current <10uA
- Working Current <100mA
- Size 177.6mm x 85mm x 30mm

## Working Environment

- **Working temperature:** 0~70°C
- **Storage temperature:** -25~125°C
- **Working humidity:** 5%~95%

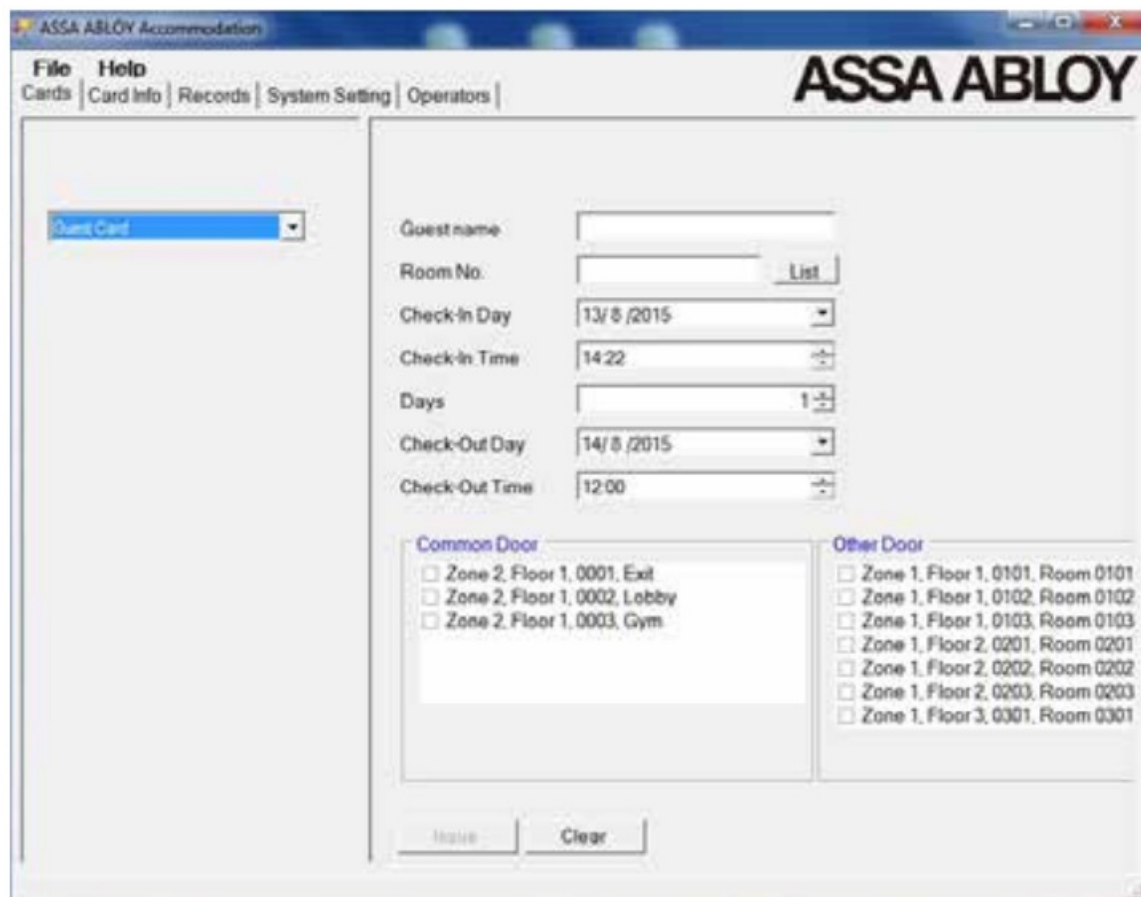
## Integral Access Control Management System

### Software

A simple to use software system that makes it easy to manage and maintain your access control

- Software available in commercial or accommodation versions
- Basic door management software system that is simple to add and delete doors/users as necessary

- Flexible user access rights
- Creates Software Management Cards for activating the card issuing system and initializing the door locks
- Creates Access Management Setting Cards for setting the Wireless Access Control Lock ID and “real-time” clock.
- Audits: Show and report on;
  - Lists of individual doors
  - Identification of users
  - Doors by floor, building, block, zone, etc.
  - A report of every opening/closing registered by all locks/readers
  - All events relating to the operation of the software (Logins etc.)
- Different levels for operators (Administrators)
- Intuitive Windows® software connected to a USB card encoder to program/issue cards



## Computer Requirements

	ASSA ABLOY Server / Client	ASSA ABLOY Desktop Client
Supported Operating Systems:	Windows 11	Windows 11
	Windows 10	Windows 10
	Windows 7, Windows Server 2003,	Windows 7, Windows Server 2003,
	Windows Server 2008, Windows Server 2008 R2	Windows Server 2008, Windows Server 2008 R2
System Memory	Minimum 4 GB	Minimum 2 GB
Hard Disk	4 GB of Disk Space	1 GB of Disk Space

## Processors

ASSA ABLOY Desktop Client & ASSA ABLOY Server / Client:

- **X86:** Pentium III-compatible processor or faster (Processor Speed – 1.0 GHz or faster)
- **X64:** Minimum: AMD Opteron, AMD Athlon 64, Intel Xeon with Intel EM64T support, Intel Pentium IV with EM64T support (Processor Speed – 1.0 GHz or faster)

## Integral Product Reference Codes Functions

- ASSA ABLOY's Integral Wireless Access Control Solution Product.

## Encoder

- **ITGL910-ENCODER** Card encoder

## Locksets/Escutcheon

- ITGL-AUT1I1SS ASSA ABLOY Integral Escutcheon – AU Version (35mm – 55mm Door)
- ITGL-AUT1I1KOSS ASSA ABLOY Integral Escutcheon with Key Override (35mm – 55mm Door)
- ITGL-AUT1I1SS-B ASSA ABLOY Integral Escutcheon – AU Version (35mm – 55mm Door) with 3772 Mortice Lock
- ITGL-AUT1I1KOSS-B ASSA ABLOY Integral Escutcheon with Key Override (35mm – 55mm Door) with 3772 Mortice Lock
- ITGL-AUT1I1SS-BL1 ASSA ABLOY Integral Escutcheon (35mm – 55mm DOOR) with 530 Latch 60mm
- ITGL-AUT1I1SS-BL2 ASSA ABLOY Integral Escutcheon (35mm – 55mm DOOR) with 530 Latch 70mm
- ITGL-AUT1I1SS-BL3 ASSA ABLOY Integral Escutcheon (35mm – 55mm DOOR) with 530 Latch 127mm

## Cards

- ITGL920-ICCard Additional System Activation Card: Activates the card issuing system
- ITGL910-SWA System Activation Card: Activates the card issuing system
- ITGL920-USERCARD User Cards: Writable cards
- All writable cards can program the following cards
  - Setting card
  - Guard card
  - Single card
  - Time card
  - Zone card
  - Global card
  - User card
  - Floor card
  - Record card
- ITGL920-USERFOB User Fob – Writable

- ITGL-920-WBB-30/75 User Wrist Band 30-75mm – Writable

## **Product Accessories**

- ITGL930-ENERGY Intelligent energy-saving device
- ITGL930-WALL Wall-mounted RFID door access controller
- ITGL930-LIFT Lift controller 2 – 27 floors (Includes) & 8 Floors lift card reader
- ITGL930-HDD Hand Held NFC Programming Device
- ITGL-SCAR-001 Integral Escutcheon Scar Plate (Pair)

## **System Capacity**

- SYSTEM COMPONENT LIMITATION
- Integral Server 1
- Integral Client\* 15
- Door Locks / Readers 9999
- Elevator Floors 27
- Users / Cards Unlimited

**Note:** Each Client must have an encoder.

## **Warranty**

### **The ASSA ABLOY Warranty**

Our belief that we manufacture the finest premium products available in today's marketplace is backed by the ASSA ABLOY Warranty, ensuring that ASSA ABLOY continues to keep Australians safe by delivering security and peace of mind. For warranty terms and conditions, please visit [assaabloy.com.au](https://assaabloy.com.au) or call 1300WARRANTY

### **Head Office**

ASSA ABLOY Australia Pty Limited 235 Huntingdale Road Oakleigh Victoria 3166 Australia +61 (3) 8574 3888  
[info.au@assaabloyasiapacific.com](mailto:info.au@assaabloyasiapacific.com) [aperiotechnology.com](https://aperiotechnology.com)

### **Disclaimer**

Whilst every effort has been made to ensure that the information (including product images and drawings) contained in this brochure is accurate at the time of publication, ASSA ABLOY Australia Pty Limited ("ASSA ABLOY") recommends that you consult ASSA ABLOY or its agents prior to placing an order to ascertain current information on specific products, as ASSA ABLOY reserves the right to make changes without notice. ASSA ABLOY will not be liable for any injury, loss or damage whatsoever, arising from any errors or omissions in the information contained in the brochure or arising from the use or application of the information contained herein. © 2018 copyright by ASSA ABLOY All rights reserved. ASSA ABLOY Australia Pty Limited ABN 90 086 451 907 ©2018

## **Documents / Resources**



### [ASSA ABLOY Integral Wireless Access Control](#) [pdf] Instructions

Integral Wireless Access Control, Integral Wireless Access Control, Wireless Access Control, Access Control, Control

## References

- [A Creating access with ASSA ABLOY | ASSA ABLOY](#)
- [A Creating access with ASSA ABLOY | ASSA ABLOY](#)
- [User Manual](#)

[Manuals+](#), [Privacy Policy](#)

This website is an independent publication and is neither affiliated with nor endorsed by any of the trademark owners. The "Bluetooth®" word mark and logos are registered trademarks owned by Bluetooth SIG, Inc. The "Wi-Fi®" word mark and logos are registered trademarks owned by the Wi-Fi Alliance. Any use of these marks on this website does not imply any affiliation with or endorsement.