



## ASSA ABLOY Door Lock Code Handle Instructions

[Home](#) » [ASSA ABLOY](#) » ASSA ABLOY Door Lock Code Handle Instructions

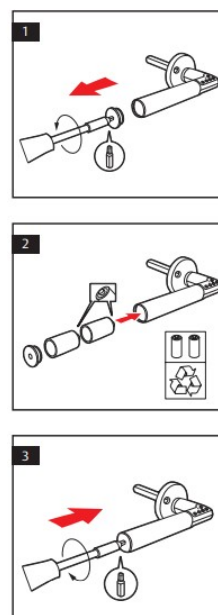
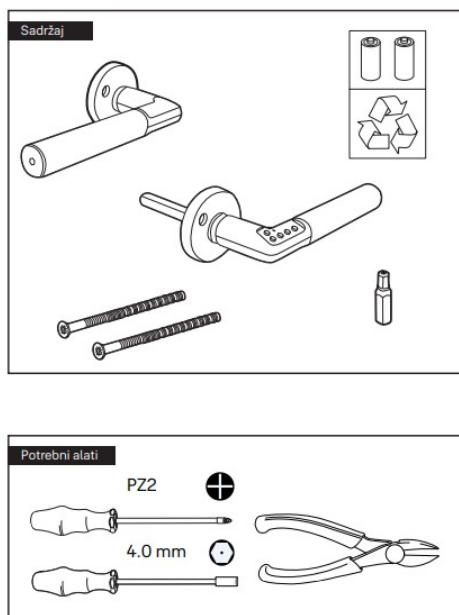


**ABLOY Door Lock Code Handle  
Instructions**

### Contents [ [hide](#) ]

- [1 Door Lock Code Handle](#)
- [2 THIS IS NOT A HIGH SECURITY PRODUCT](#)
- [3 Operating Instructions Code Handle®](#)
- [4 Documents / Resources](#)
- [5 Related Posts](#)

### Door Lock Code Handle



## THIS IS NOT A HIGH SECURITY PRODUCT

**IMPORTANT:** Read “Safety and Regulatory Guide” and this manual thoroughly before registering codes or other settings. It is important that you understand the procedure before you start the process, since you only have a limited time to perform the procedure.

### Fitting Instructions Code Handle®

The handle is designed for doors that are 35 to 80 mm thick, 1 " to 3 ". Check that your door fulfils these requirements before you start installation. For door thickness below 35 mm (1 ") distance ring 8820 can be used. Preparation: Check that all parts are included and make sure you have the necessary tools, see page 2. Fit the batteries according to the instructions on page 3. Also read about batteries in section “Operating Instructions Code Handle®”. When fitting, use the illustrations provided on the fold-out at the rear of the manual.

1. Register an administrator's code The code handle must be initiated by deciding an administrator's code prior to fitting the handle. The code handle does not have an administrator's code when delivered. a Hold the handle horizontally with the pin/square shaft downwards, fig. 1a.

b Hold buttons 1 and 4 pressed at the same time. The LED flashes red, fig. 1b. Release the buttons. The LED lights green constantly.

c Enter an administrator's code, 6 digits, fig. 1c. The LED flashes green rapidly. The entered administrator's code is now activated.

Note that all user codes are erased if the administrator's code is changed. It is important that you write down your administrator's code on page 24 and store it safely.

To change the administrator's code again, repeat the procedure above.

2. Cut the screws

Place the inside handle (non coded) on the door according to fig. 2 and fit the enclosed screws through the handle rose and the lock case/door. Cut the screws with a cutting tool at the closest unthreaded “waist” so that the screw is either at level with the door face or sticks out up to 6 mm (1/4 "). If the screw still too long, cut away slightly more.

3. Turn the square shaft

Turn the square shaft so that one of the flat parts indicating “UP” is at the top, fig. 3. Hold it in this position when fitting, as in fig. 4b.

4. Positioning the handle

A 22 mm (minimum) hole through the door is required to accommodate for the cam around the spindle.

a The handle fits door thicknesses between 35-80 mm with a B-measurement (see fig. 4a) of at least 21 mm.

For B-measurement between 14-21 mm, use distance ring 8820.

b Position the outer handle (with pushbuttons) on the outside of the door, fig. 4b. Make sure the handle is kept horizontal throughout fitting.

c Screw the inner and outer handles together, fig. 4c. Make sure that fitting is performed correctly, so that both handles can move freely and are spring-loaded upwards.

## 5. Unlock

Enter at least one user code, see section "Enter new or change existing user code" under "Operating Instructions Code Handle".

Unlock the handle by entering a correct code on the pushbuttons 1 to 4, fig. 5. A correct code causes the LED to flash green, if the sound is on, it is also acknowledged by three short beeps. An incorrect code causes the LED to flash red. The handle will remain unlocked once a correct code has been entered, as long as automatic locking has not been requested, see section "Automatic locking" under "Operating Instructions Code Handle".

## 6. Lock

Lock the handle by pressing the padlock button, fig. 6. The LED flashes red. If the sound is on, locking is also confirmed by a beep.

# Operating Instructions Code Handle®

## Batteries

The ASSA ABLOY Code Handle® is delivered with two CR2 batteries.



**BATTERY WARNING!** The working life of the batteries is usually at least a couple of years, depending on the number of code handle operations and the performance of the batteries. If the LED flashes red when you press the pushbuttons, it's time to change the batteries. In addition, to accentuate the need to replace batteries, there is a

slight delay in opening at the same time as the LED flashes red. The code handle will remember all codes during battery replacement.

It is important to choose good quality batteries for replacement. Choose a well-known make of CR2 battery. For battery replacement, follow the instructions on page 3 and be aware of the safety aspects by:

- Installing the batteries the right way round, fig. 2, page 3.
- Don't mix new and old batteries, or different makes.
- Replace both batteries at the same time.
- Don't expose batteries to fire.
- Handle discharged batteries responsibly and dispose of them according to environmental guidelines.
- Batteries should be kept out of the reach of children.
- Batteries should be fitted individually.

## Security

If an incorrect code is entered five times consecutively the code handle will be disabled for 3 minutes and cannot be opened. The disable can be overridden by entering a correct code twice consecutively.

## User codes

ASSA ABLOY Code Handle can have 9 different user codes that can be programmed from the selected administrator's code.

## Enter new or change existing user code

1. Enter programming mode by holding the lock button pressed until the LED lights red constantly.
2. Enter the administrator's code within 5 seconds. The LED lights green.
3. To register a code, select one of the 9 memory positions by pressing pushbutton 1 the same number of times as the memory position; i.e. one depression for memory 1, two for memory 2, etc.
4. Wait until the LED lights green constantly.
5. Enter the new user code, which can comprise 4, 5 or 6 digits.
6. Wait until the green LED goes out. Your new code is acknowledged by three short beeps.
7. Other codes can be stored in the remaining memory positions. Follow the steps 1 – 6 above.
8. To exit programming mode, and confirm your new codes, press lock button.

**NOTE!** You can write down your user codes on page 26.

**Remove existing user code:**

1. Enter programming mode by holding the lock button pressed until the LED lights red constantly.
2. Enter the administrator's code within 5 seconds, the LED lights green.
3. Select which one of the 9 codes to be erased by pressing pushbutton 1 the same number of times as the memory position. I.e. one depression for memory 1, two for memory 2, etc.
4. Wait until the LED lights green constantly.
5. Press the lock button to erase the selected position and to exit the programming mode. The LED flashes red and the selected memory position is erased.
6. To erase additional memory positions, repeat the steps above, and indicate the position to be erased by a corresponding number of depressions (step 3).

**Audio signals**

The code handle is delivered with the audio signal enabled, and it can be turned off as follows:

1. Enter programming mode by holding the lock button pressed until the LED lights red constantly.
2. Enter the administrator's code within 5 seconds, the LED lights green.
3. Press pushbutton 2 once to turn the audio signal off/on. A low tone indicates that the signal has been turned off and a high double-tone indicates that the audio signal has been turned on.
4. Confirm the change and exit programming mode by pressing the lock button, or wait until the green LED turns off.

**Automatic locking**

Auto locking requires that the handle returns to the horizontal position within 9 seconds of opening. The code handle is delivered in manual mode.



**WARNING!** In automatic locking mode, the code handle will repeatedly attempt to re-lock within 9 seconds from opening. If the handle is not returned to its horizontal position within this time frame, the handle will remain unlocked. The effect is similar to the temporary disabling of auto-locking as described below. Auto locking can be selected as long as the handle returns to the horizontal position within 9 seconds of a correct code being entered. To change the mode, follow the instructions below:

1. Enter programming mode by holding the lock button pressed until the LED lights red constantly.
2. Enter the administrator's code within 5 seconds, the LED lights green.
3. Press pushbutton 3 once to change the mode to/from automatic locking. The change is confirmed by three

short beeps (On) or a low pitch tone (Off).

4. Confirm the change and exit programming mode by pressing the lock button, or wait until the green LED turns off.

### Temporary disabling of automatic locking

Enter a correct user code and wait until the LED stops flashing. Immediately press pushbuttons 1 and 4 at the same time. The door is now unlocked until the next time the lock button is pressed or a user code is entered, after which the handle returns to automatic locking mode.

### Resetting the code memory

The code handle can be reset to factory settings by changing the administrator's code, see steps 1-6 "Register an administrator's code" under "Fitting instructions Code Handle". The settings will then be:

- Empty user codes
- Audio signal on
- Auto locking off

**IMPORTANT:** If the product does not work, remove the batteries according to the instructions on page 3 and then re-insert them. If the product still does not work, try fitting new batteries of an approved make. If neither of these solutions work, take the product and associated codes to your dealer.

### Handle® Distancer 8820

