

ASSA ABLOY

ASSA ABLOY 673F Exit
Device Mortise Trim



ASSA ABLOY 673F Exit Device Mortise Trim Installation Guide

[Home](#) » [ASSA ABLOY](#) » ASSA ABLOY 673F Exit Device Mortise Trim Installation Guide 

Contents

- [1 ASSA ABLOY 673F Exit Device Mortise Trim](#)
- [2 Parts](#)
- [3 Installation](#)
- [4 Documents / Resources](#)
 - [4.1 References](#)
- [5 Related Posts](#)

ASSA ABLOY

ASSA ABLOY 673F Exit Device Mortise Trim



Specifications

- **Model:** 673F & 675F Exit Device Mortise Trim
- **Trim Dimensions:**
 - **673F Trim:** 2-3/4 (70)
 - **675F Trim:** 2-3/4 (70) x 15-1/4 (337)
- **Functions:**
 - **F05 Function:** Key locks/unlocks thumbpiece
 - **Passage Function:** Thumbpiece always active

- **Warning:** This product may contain lead which can cause cancer and birth defects. For more information, visit www.P65warnings.ca.gov.

Installation Instructions

1. Check box for components.
2. Mark door inside face for device location.
3. Carry Vertical Reference Centerline from inside door face.
4. Transfer Horizontal Reference Centerline from inside to outside door face.
5. Align trim template and tape to outside door face.
6. Spot holes and prepare door for trim.
7. Mount trim to door through holes A with (2) mounting screws.
8. Use the remaining (3) oval headed screws and finish washers to secure the trim to the door surface through location B.
9. Thread cylinder into mortise lock until seated within escutcheon recess with keyway positioned vertically.
10. Continue as shown in device instructions.

FAQ

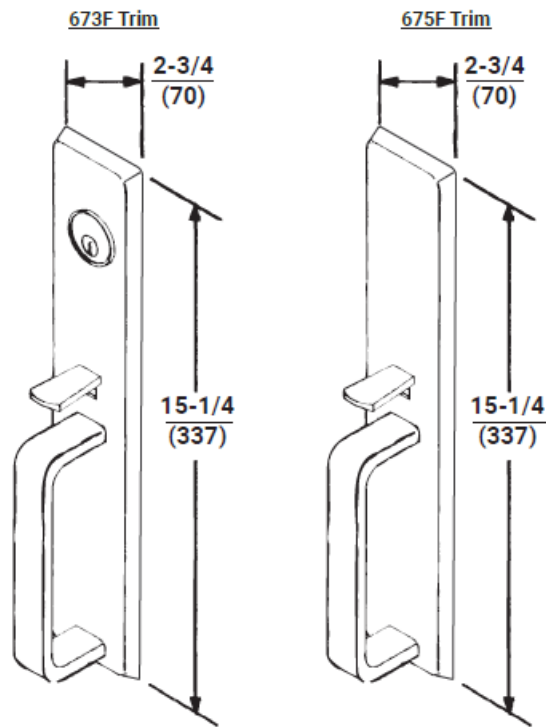
- **Q: Can this trim be used on both metal and wood doors?**
 - A: Yes, the trim can be used on both metal and wood doors. Refer to the provided template for hole dimensions based on the door material.
- **Q: What is the difference between the F05 and Passage functions?**
 - A: The F05 function allows key locking and unlocking of the thumbpiece, while the Passage function keeps the thumbpiece always active without the need for a key.

This product is now proudly being offered under the ASSA ABLOY ACCENTRA™ brand, effective June 20, 2023. Visit YaleCommercial.com/en/Today for support and information.

673F & 675F
Exit Device Mortise Trim

Installation Instructions

- **F05 Function:** Key locks/unlocks thumbpiece.
- **Passage Function:** Thumbpiece always active.



WARNING

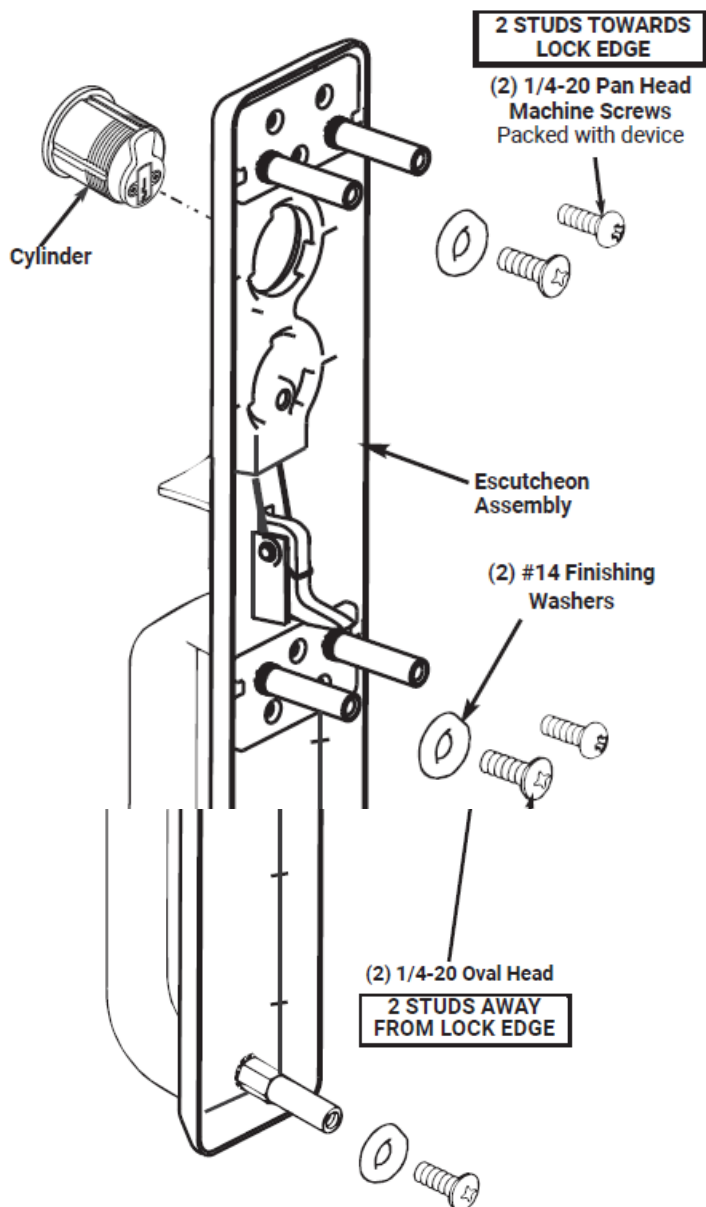
This product can expose you to lead which is known to the state of California to cause cancer and birth defects or other reproductive harm. For more information go to www.P65warnings.ca.gov.

WARNING

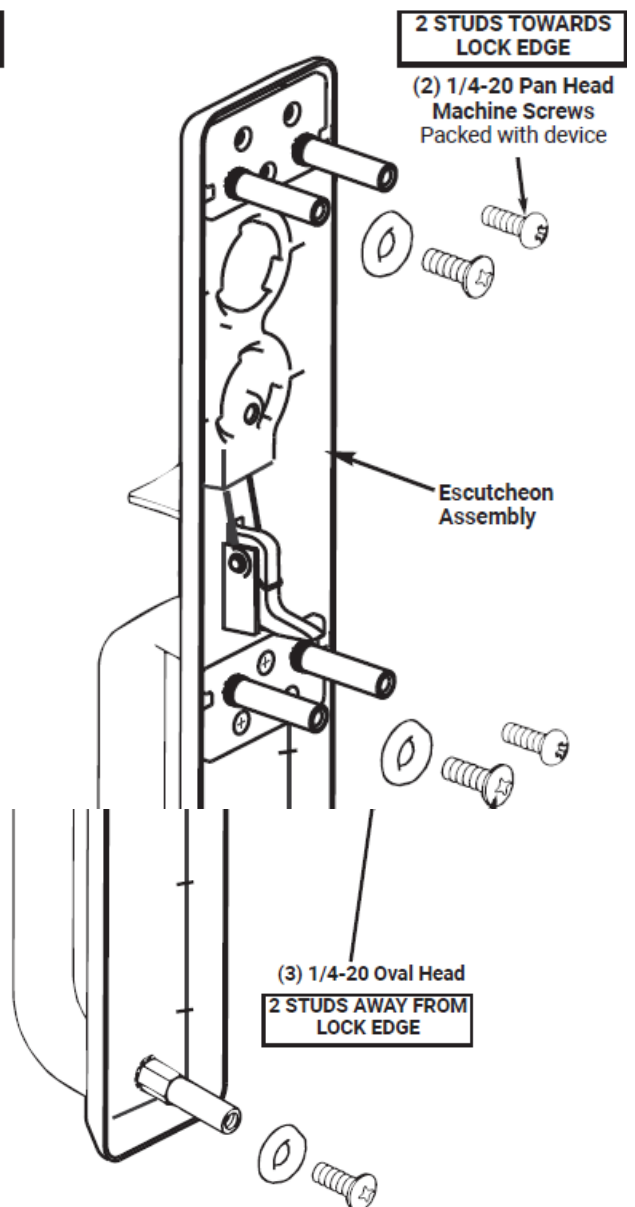
Attention Installer: Any retrofit or other field modification to a fire rated opening can potentially impact the fire rating of the opening, and ASSA ABLOY makes no representations or warranties concerning what such impact may be in any specific situation. When retrofitting any portion of an existing fire-rated opening, or specifying and installing a new fire-rated opening, please consult with a code specialist or local code official (Authority Having Jurisdiction) to ensure compliance with all applicable codes and ratings

Parts

673F Trim

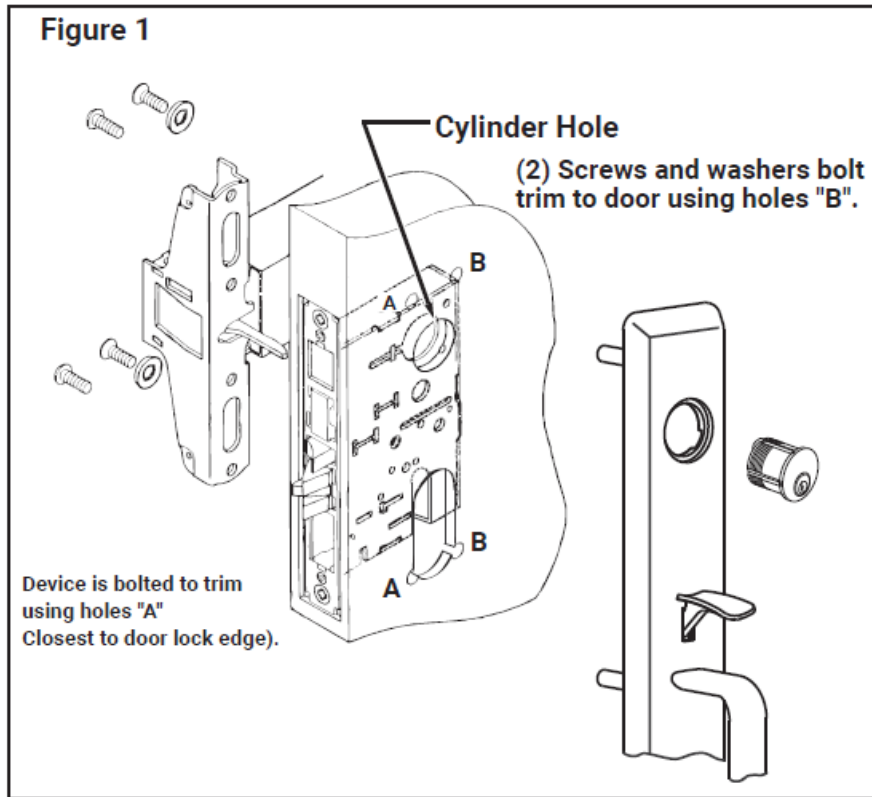
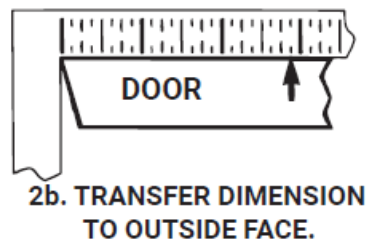
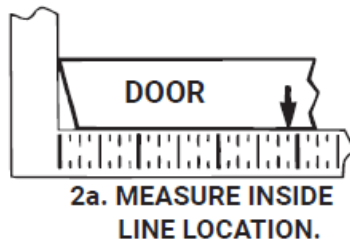


675F Trim



Installation

1. Check box for components.
2. After marking door inside face for device location (Device Instructions), carry "Vertical Reference Centerline" from inside door face. Follow steps 2a. and 2b., shown below.
3. Transfer Horizontal Reference Centerline from inside to outside door face.
4. Align trim template and tape to outside door face.
5. Spot holes and prepare door for trim
6. Mount trim to door thru holes "A" with (2) mounting screws as shown in Fig. 1. Use the remaining (3) oval headed screws and finish washers to secure the trim to the door surface thru location "B" as shown in Fig. 1, the third screw and washer attaches to the hole located at the bottom of the trim.
7. Thread cylinder into mortise lock until seated within escutcheon recess with keyway positioned vertically and with plug in lower cylinder as shown in Figure 1.
8. Continue as shown in device instructions.



HOLES MARKED "A" & "X"

METAL DOORS

- **Inside Face** 5/16" (8) Dia.
- **Outside Face** 1/2" (13) Dia.
- **WOOD DOORS:** 1/2" (13) Dia. Thru

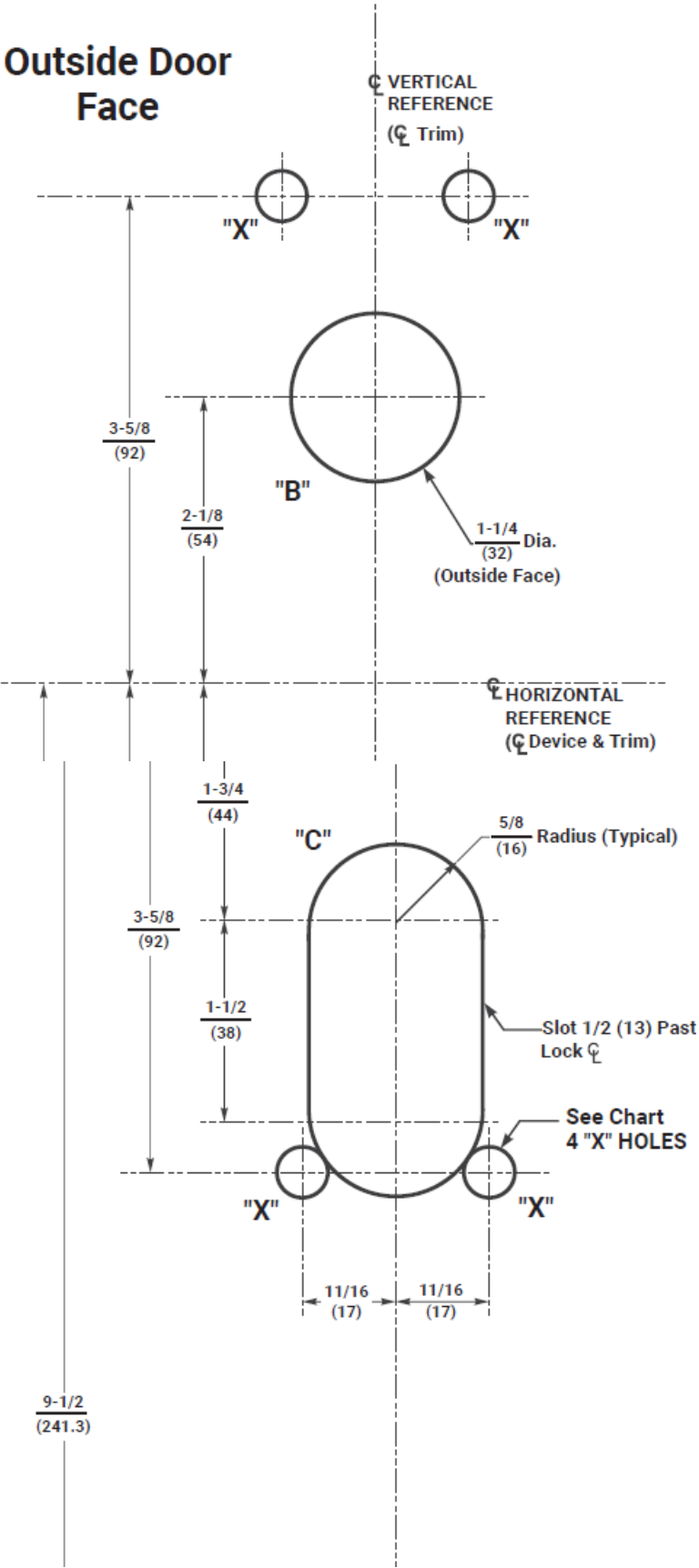
Dimensions given in $\frac{\text{Inches}}{(\text{mm})}$

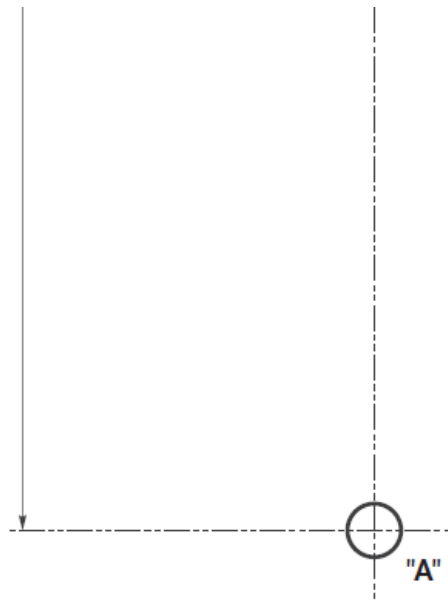
673F & 675F Trim Template

TRIM	HOLES
673F	A, B, C, & X
675F	A, C, & X

CAUTION: Office copiers and facsimile machines may change the size of a drawing and make the template

inaccurate to use as a door marker. If this is not the original template packed with the trim, use only the holes on the door (do not use template as a door marker).

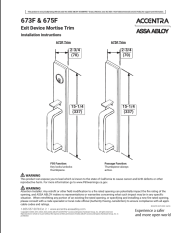




- 1-[855-577-5078](tel:855-577-5078) Ext. 2
- www.accentra-assaabloy.com

Copyright © 2005, 2013, 2023, 2024, ASSA ABLOY ACCENTRA™ Access and Egress Hardware Group, Inc. All rights reserved. Reproduction in whole or in part without the express written permission of ASSA ABLOY Access and Egress Hardware Group, Inc. is prohibited.

Documents / Resources

	ASSA ABLOY 673F Exit Device Mortise Trim [pdf] Installation Guide 673F, 675F, 673F Exit Device Mortise Trim, 673F, Exit Device Mortise Trim, Device Mortise Trim, Mortise Trim
---	---

References

- [Home | ASSA ABLOY ACCENTRA™, formerly Yale Commercial Locks | ASSA ABLOY ACCENTRA™, formerly Yale Commercial](#)
- [P65warnings.ca.gov](https://www.p65warnings.ca.gov)
- [User Manual](#)

[Manuals+](#), [Privacy Policy](#)

This website is an independent publication and is neither affiliated with nor endorsed by any of the trademark owners. The "Bluetooth®" word mark and logos are registered trademarks owned by Bluetooth SIG, Inc. The "Wi-Fi®" word mark and logos are registered trademarks owned by the Wi-Fi Alliance. Any use of these marks on this website does not imply any affiliation with or endorsement.