

[Manuals.plus](#) /

> [Garvee](#) /

> Garvee Twin Loft Bed with Desk and Stairs Instruction Manual (Model PHK_37HTMP03-pxyTjIwg0p)

Garvee PHK_37HTMP03-pxyTjIwg0p

Garvee Twin Loft Bed with Desk and Stairs Instruction Manual

Model: PHK_37HTMP03-pxyTjIwg0p | Brand: Garvee

INTRODUCTION

This manual provides comprehensive instructions for the assembly, operation, and maintenance of your Garvee Twin Loft Bed with Desk and Stairs. This multifunctional loft bed is designed to optimize space, featuring an integrated desk, RGB LED lighting, a convenient charging station, and ample storage solutions including fabric drawers and open shelves. Please read this manual thoroughly before assembly and use to ensure safe and proper operation.

SAFETY INFORMATION

Your safety is paramount. Please adhere to the following guidelines:

- **Adult Assembly Required:** This product must be assembled by adults.
- **Regular Checks:** Periodically inspect all bolts, screws, and connections to ensure they remain tight and secure.
- **Weight Capacity:** The loft bed is designed to support a maximum weight of 450 lbs. Do not exceed this limit.
- **Mattress Thickness:** Use a mattress with a recommended thickness of 4-6 inches. Ensure the top of the mattress maintains a minimum of 5 inches (127mm) clearance from the top of the guardrail for safety.
- **Guardrail Use:** Always use the guardrails provided. Do not remove them.
- **Anti-Tipping Mechanism:** Ensure the anti-tipping mechanism is correctly installed and secured to prevent accidental tipping.
- **Ladder Safety:** Utilize the sturdy handrails and anti-slip widened stairs for safe access to the bed. Always face the ladder when climbing up or down.
- **No Jumping:** Do not jump on the bed.

**Recommended Mattress Thickness:
4-6 Inches**



SAFETY-FIRST DESIGN: GUARDRAIL CLEARANCE

The top of your mattress should maintain a minimum distance of 5 inches (127mm) from the guardrail edge, providing added protection and peace of mind during sleep.

Image: Guardrail clearance and recommended mattress thickness for safe use.



WIDEN LADDER PADDING

Extra-Wide Wooden Ladder Steps provide a secure and stable climb, far safer than traditional metal pole ladders.



Image: Widened ladder steps for secure and stable climbing.

SETUP AND ASSEMBLY INSTRUCTIONS

Assembly of your Garvee Twin Loft Bed is designed to be straightforward. Please ensure you have all parts and tools before beginning. Clear instructions and labeled parts are provided to simplify the process.

Key Assembly Features:

- **Robust and Durable Construction:** The bed features a heavy-duty metal frame and closely spaced metal slats, providing unwavering support.
- **No Box Spring Needed:** The sturdy slat system eliminates the need for a box spring.
- **Innovative Buckle Design:** Secure buckle fastenings tightly hold the slats in place, ensuring silent stability.
- **Anti-Tipping Mechanism:** Install this device as instructed to enhance stability and prevent tipping.



Image: Heavy-duty metal frame and safety features overview.

ENHANCED SAFETY FEATURES

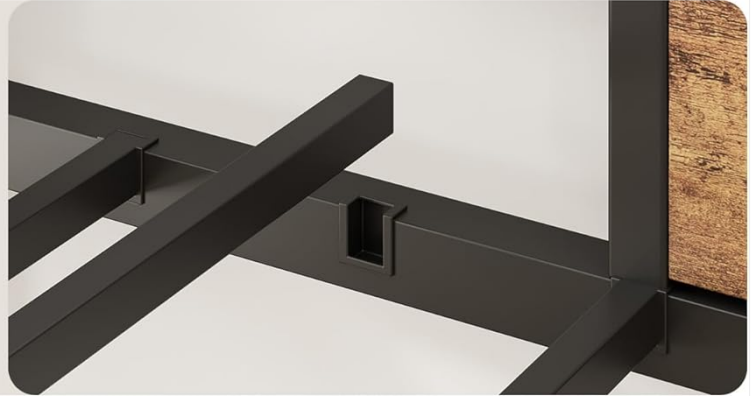


ROBUST AND DURABLE CONSTRUCTION

Featuring closely spaced metal slats that offer unwavering support, eliminating the need for a box spring entirely.

INNOVATIVE BUCKLE DESIGN FOR SILENT STABILITY

Simplified installation process with secure buckle fastenings that tightly hold the slats in place, ensuring a noise-free sleeping experience.



ANTI-TIPPING MECHANISM

Built to last with reinforced structure for maximum stability and long-term use.

Image: Detailed view of robust construction, buckle design, and anti-tipping mechanism.

OPERATING INSTRUCTIONS

RGB LED Lights:

The integrated RGB LED lights offer customizable ambiance for your space. Control the lights using the included line controller.

- **Line Controller:** Use the inline remote to power on/off, change colors, and select modes.
- **Color Options:** Choose from over 60,000 colors to match your mood or decor.
- **Modes:** Explore various modes including Mic Mode (lights react to sound), Music Mode (lights sync with music), Timing Function (set schedules for lights), Brightness Adjustable, and Custom Style options.

LOFT BED WITH RGB LED LIGHTS

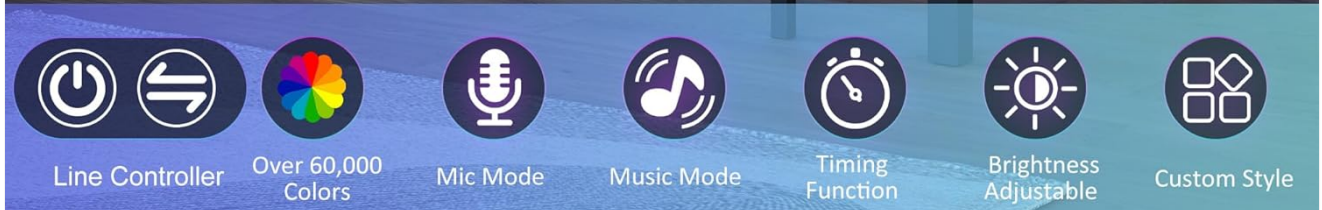


Image: RGB LED lights in operation with controller functions.

Charging Station:

The built-in charging station provides convenient power access for your electronic devices.

- **Power Outlets:** Features 2 standard AC outlets (125V / 12A).
- **USB Ports:** Includes 2 USB ports (5V / 2.1A) for charging phones, tablets, and other USB-powered devices.
- **Power Cord:** Equipped with a 5-foot power cord for flexible placement.

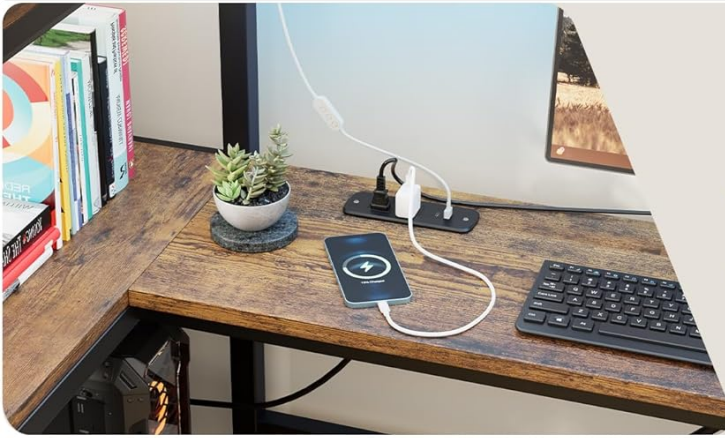


Image: Integrated charging station with AC outlets and USB ports.

Desk and Storage Features:

The loft bed incorporates various storage solutions to keep your space organized.

- **L-Shaped Desk:** A spacious desktop surface is ideal for studying, working, or creative activities.
- **Open Shelves:** Dual-tier open shelves provide additional space for books, decor, or supplies.
- **Fabric Storage Drawers:** Three fabric drawers offer concealed storage for personal items.
- **Pegboard Panels:** Utilize the pegboard panels for hanging accessories and further customization.



SPACIOUS DESKTOP SURFACE

Generous workspace ideal for studying and professional tasks

3 FABRIC DRAWERS INCLUDED

Offering ample storage to keep your essentials neatly organized



DUAL-TIER STORAGE SHELF

Additional space for organizing items, maintaining a clutter-free environment

Image: L-shaped desk with fabric drawers and open shelves.

MAINTENANCE

To ensure the longevity and safety of your Garvee Twin Loft Bed, follow these maintenance recommendations:

- **Regular Inspection:** Every 3-6 months, check all bolts, screws, and connections to ensure they are tight. Re-tighten if necessary.
- **Cleaning:** Wipe surfaces with a soft, damp cloth. Avoid using abrasive cleaners, harsh chemicals, or solvents, as these can damage the finish.
- **LED Lights:** Ensure the LED light strip and controller are kept dry and free from dust.
- **Charging Station:** Keep the charging station free from spills and debris. Do not overload the outlets.

TROUBLESHOOTING

If you encounter any issues with your loft bed, refer to the following common troubleshooting steps:

- **Bed Feels Unstable/Wobbly:**

- Ensure all assembly bolts and screws are fully tightened.
- Verify the anti-tipping mechanism is correctly installed and secured to a wall stud.
- Check that the bed is placed on a flat, level surface.

- **RGB LED Lights Not Working:**

- Confirm the power cord for the LED lights is securely plugged into a working outlet.
- Check the connection between the LED strip and the line controller.
- Ensure the line controller is not damaged.

- **Charging Station Not Providing Power:**

- Verify the charging station's power cord is securely plugged into a working wall outlet.
- Test the outlet with another device to confirm it has power.
- Ensure your device's charging cable is fully inserted into the USB port or AC outlet.
- Avoid overloading the charging station with too many high-power devices simultaneously.

SPECIFICATIONS

Model Number	PHK_37HTMP03-pxyTjIwg0p
Brand	Garvee
Size	Twin LED Loft Bed
Material	Iron, Engineered Wood
Product Dimensions (L x W x H)	77.2" x 42.5" x 77.2"
Weight Capacity	450 lbs
Recommended Mattress Thickness	4-6 inches
Color	Matte Black
Special Features	RGB LED Lighting, Integrated Charging Station (2 AC, 2 USB), L-Shaped Desk, Storage Shelves, 3 Fabric Drawers, Pegboard Panels
UPC	881011588608

Twin Size: 77.2*42.5*70.9

4-6" Mattress Recommend

Weight Capacity: 450LBS



Image: Product dimensions and weight capacity overview.

WARRANTY AND SUPPORT

For warranty information or technical support, please refer to the documentation included with your purchase or contact Garvee customer service directly. Keep your purchase receipt for warranty claims.