

KIMO 26816

KIMO 2-IN-1 Electric Pole Saw Instruction Manual

Model: 26816

[Safety Information](#)

[Package Contents](#)

[Setup](#)

[Operation](#)

[Maintenance](#)

[Troubleshooting](#)

[Specifications](#)

[Warranty & Support](#)

INTRODUCTION

This manual provides essential instructions for the safe and efficient operation, maintenance, and troubleshooting of your KIMO 2-IN-1 Electric Pole Saw. This versatile tool functions as both a cordless pole saw for high-reach trimming and a handheld mini chainsaw for ground-level cutting. Please read this manual thoroughly before initial use and retain it for future reference.



Image: The KIMO 2-IN-1 Electric Pole Saw shown in both its pole saw configuration for high branches and its handheld mini chainsaw configuration for ground-level tasks.

SAFETY INFORMATION

WARNING: Read all safety warnings, instructions, illustrations, and specifications provided with this power tool. Failure to follow all instructions listed below may result in electric shock, fire, and/or serious injury.

General Power Tool Safety Warnings:

- **Work Area Safety:** Keep work area clean and well lit. Do not operate power tools in explosive atmospheres, such as in the presence of flammable liquids, gases, or dust.
- **Electrical Safety:** Avoid body contact with earthed or grounded surfaces. Do not expose power tools to rain or wet conditions.
- **Personal Safety:** Always wear eye protection, hearing protection, and appropriate clothing. Do not overreach. Maintain proper footing and balance at all times.
- **Power Tool Use and Care:** Do not force the power tool. Use the correct power tool for your application. Disconnect the battery pack from the power tool before making any adjustments, changing accessories, or storing power tools.

- **Battery Tool Use and Care:** Recharge only with the charger specified by the manufacturer. Use power tools only with specifically designated battery packs.
- **Service:** Have your power tool serviced by a qualified repair person using only identical replacement parts.

Specific Chainsaw Safety Warnings:

- Keep all parts of the body away from the saw chain when the chainsaw is operating.
- Always hold the chainsaw with both hands when the motor is running.
- Wear appropriate personal protective equipment (PPE) including gloves, non-slip footwear, and head protection.
- Do not operate a chainsaw in a tree unless you have been specifically trained to do so.
- Be aware of kickback. Kickback may occur when the nose or tip of the guide bar touches an object, or when the wood closes in and pinches the saw chain in the cut.
- Never allow children to operate the chainsaw.

PACKAGE CONTENTS

Carefully unpack all items and ensure you have received the following:

- 1 x 8-Inch Mini Chainsaw Unit
- 1 x Telescopic Extension Pole
- 2 x 20V 4.0Ah Lithium-Ion Batteries
- 1 x Fast Charger
- 2 x Saw Chains
- 1 x Guide Bar
- 1 x Guide Bar Cover
- 1 x User Manual (this document)



Image: All components of the KIMO 2-IN-1 Electric Pole Saw kit, including the chainsaw unit, extension pole, batteries, charger, and accessories.

SETUP

1. Battery Charging

Before first use, fully charge both 20V 4.0Ah Lithium-Ion batteries using the provided fast charger.

1. Connect the fast charger to a standard power outlet.
2. Slide a battery pack onto the charger until it clicks into place.
3. The charger indicator light will show the charging status. A full charge typically takes 1 hour.
4. Once fully charged, remove the battery from the charger.



Image: A KIMO 20V 4.0Ah Lithium-Ion battery being charged on the fast charger, with an indicator showing charging progress.

2. Chain and Guide Bar Installation (Handheld Chainsaw)

Ensure the battery is removed before performing any assembly or maintenance.

1. Unscrew the chain replacement knob and lift the cover.
2. Place the guide bar onto the chainsaw unit.
3. Carefully fit the saw chain around the guide bar and the drive sprocket, ensuring the cutting edges face the correct direction.
4. Snap the cover back on and tighten the chain replacement knob.
5. Adjust chain tension: Turn the knob clockwise to tighten the chain. The chain should be snug but still able to be pulled freely by hand.



Image: Step-by-step visual guide for tool-free chain replacement and tensioning on the KIMO mini chainsaw.

3. Automatic Oiling System

The chainsaw features an automatic oiling system. Fill the oil tank before each use.

1. Locate the oil cap on the chainsaw unit.
2. Unscrew the cap and pour appropriate chainsaw bar and chain oil into the 32ml tank.
3. Securely replace the oil cap.



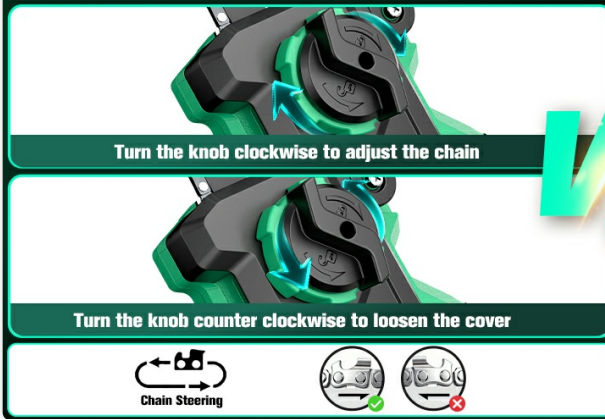
Image: Illustration of the automatic oiling system, showing oil being poured into the designated tank on the chainsaw unit.

4. Assembling the Pole Saw

To convert the handheld chainsaw into a pole saw:

1. Ensure the battery is removed from the chainsaw unit.
2. Align the bottom of the chainsaw unit with the top of the telescopic extension pole.
3. Connect them together and use the hook to lock the main body and extension rod securely.
4. Insert the power plug from the pole into the main chainsaw body.
5. Install a charged battery at the bottom of the extension rod.

Tool-Free Chain Tensioning



Adjust Tension With Tool



Image: A sequence of images demonstrating how to connect the mini chainsaw unit to the telescopic pole and install the battery for pole saw operation.

OPERATION

1. Starting and Stopping

The tool features a dual-trigger switch for safety.

- **To Start:** Press and hold the safety lock button, then squeeze the trigger switch.
- **To Stop:** Release the trigger switch.

2. Using as a Handheld Chainsaw

For cutting branches and logs at ground level or within easy reach.

- Ensure a firm grip with both hands on the non-slip handle.
- Position the chainsaw firmly against the material to be cut before starting.
- Allow the chain to reach full speed before beginning the cut.
- Apply steady, even pressure. Do not force the saw.



Image: A person using the KIMO 8-inch mini chainsaw to cut a log, demonstrating its handheld operation.

3. Using as a Pole Saw

For trimming high branches up to 16 feet overhead.

- **Adjusting Pole Length:** Loosen the locking mechanism on the telescopic pole, extend or retract to the desired length (4.6 to 10 feet), and securely tighten the mechanism. This allows for a maximum reach of 16 feet.
- **Adjusting Cutting Angle:** The multi-angle cutting head can be adjusted from 0° to 60°. Loosen the adjustment knob, set the desired angle, and tighten the knob firmly.
- Maintain a safe distance from the cutting area. Do not stand directly under the branch being cut.
- Use smooth, controlled movements. Avoid sudden jerks.



Image: A person using the KIMO pole saw to trim high branches, highlighting the adjustable pole length and multi-angle cutting head.

4. Cutting Techniques

- Always make sure the chain is sharp and properly tensioned.
- For larger branches, make an undercut first to prevent bark stripping.
- Avoid cutting near power lines or other obstructions.
- Be aware of falling debris and clear the work area before cutting.

Your browser does not support the video tag.

Video: Official KIMO video demonstrating the assembly and operation of the 2-IN-1 Electric Pole Saw for various trimming tasks.

MAINTENANCE

Regular maintenance ensures the longevity and safe operation of your KIMO Electric Pole Saw.

1. Chain Lubrication

- Check the oil level before each use and refill as necessary.

- The automatic oiling system will lubricate the chain during operation. Ensure the oil tank is never empty.

2. Chain Tension and Sharpening

- Check chain tension frequently, especially during initial use. Adjust using the tool-free knob.
- A dull chain can cause kickback and inefficient cutting. Sharpen the chain regularly or replace it when necessary. Refer to the chain installation section for replacement instructions.

3. Cleaning and Storage

- After each use, remove the battery and clean the chainsaw unit and guide bar.
- Use a brush to remove sawdust, chips, and debris from the chain, guide bar, and motor vents.
- Wipe down all surfaces with a damp cloth. Do not use harsh chemicals.
- Store the tool in a dry, secure place, out of reach of children. Always use the guide bar cover when storing.

TROUBLESHOOTING

If you encounter issues, refer to the table below for common problems and solutions.

Problem	Possible Cause	Solution
Saw does not start.	Battery not charged or improperly installed. Safety lock not engaged.	Ensure battery is fully charged and correctly inserted. Press safety lock button before squeezing trigger.
Chain does not move or moves slowly.	Chain tension too tight. Chain dull or damaged. Obstruction in guide bar.	Adjust chain tension. Sharpen or replace chain. Clear any debris from guide bar.
Excessive vibration during operation.	Loose chain. Damaged chain or guide bar.	Check and adjust chain tension. Inspect chain and guide bar for damage and replace if necessary.
Saw chain not oiling.	Oil tank empty. Oil port clogged.	Refill oil tank. Clean oil port and guide bar groove.

SPECIFICATIONS

Feature	Detail
Brand	KIMO
Model Number	26816
Power Source	Battery Powered (20V Lithium-Ion)
Motor	800W Brushless Motor
Chain Speed	34 ft/s

Feature	Detail
Guide Bar Length	8 inches
Max Cutting Diameter	7.5 inches
Telescopic Pole Length	Adjustable from 4.6 to 10 feet
Max Reach (with user)	Up to 16 feet
Cutting Head Adjustment	0° to 60° Multi-Angle
Battery Capacity	2 x 4.0Ah (4000mAh)
Charging Time	Approx. 1 hour per battery
Oil Tank Capacity	32ml
Noise Level	<60 dB
Product Dimensions (Handheld)	7.5"L x 8.3"W x 18.7"H

WARRANTY AND SUPPORT

Warranty Information:

The KIMO 2-IN-1 Electric Pole Saw comes with a **1-year manufacturer's warranty** from the date of purchase. This warranty covers defects in materials and workmanship under normal use. It does not cover damage resulting from misuse, abuse, neglect, unauthorized repair, or normal wear and tear. Please retain your proof of purchase for warranty claims.

Customer Support:

For any questions, technical assistance, or warranty claims, please contact KIMO Customer Support. KIMO provides **24x7 friendly customer support** to assist you. Contact information can typically be found on the KIMO official website or on your product packaging.