

Midea MAP12DV1XWT-A

Midea 14,000 BTU Dual Hose Portable Air Conditioner User Manual

Model: MAP12DV1XWT-A

1. INTRODUCTION AND SAFETY INFORMATION

This manual provides essential instructions for the safe operation, installation, maintenance, and troubleshooting of your Midea 14,000 BTU Dual Hose Portable Air Conditioner. Please read this manual thoroughly before using the appliance and retain it for future reference.

Important Safety Instructions:

- Always ensure the unit is placed on a flat, stable surface.
- Do not operate the unit with a damaged power cord or plug.
- Keep the air intake and exhaust vents clear of obstructions.
- Do not insert objects into the air vents.
- Unplug the unit before cleaning or performing any maintenance.
- This appliance is not intended for use by persons (including children) with reduced physical, sensory or mental capabilities, or lack of experience and knowledge, unless they have been given supervision or instruction concerning use of the appliance by a person responsible for their safety.

2. PRODUCT OVERVIEW

The Midea 14,000 BTU Dual Hose Portable Air Conditioner is designed to provide efficient cooling for spaces up to 550 sq ft. Featuring inverter technology for energy savings and quiet operation, along with smart Wi-Fi connectivity for remote control.

Key Features:

- **Dual Hose Design:** Delivers faster and more balanced cooling by using separate intake and exhaust hoses.
- **Inverter Technology:** Provides up to 44% energy savings, quiet operation (47 dB), and consistent

temperature control.

- **Smart Control:** Wi-Fi enabled, compatible with SmartHome app, Alexa, and Google Assistant for convenient remote operation.
- **Flexible Airflow:** Dynamic 102-degree cool swing for wide air projection up to 26 feet.
- **Self-Evaporating System:** Eliminates most moisture, reducing the need for manual drainage.

Components:

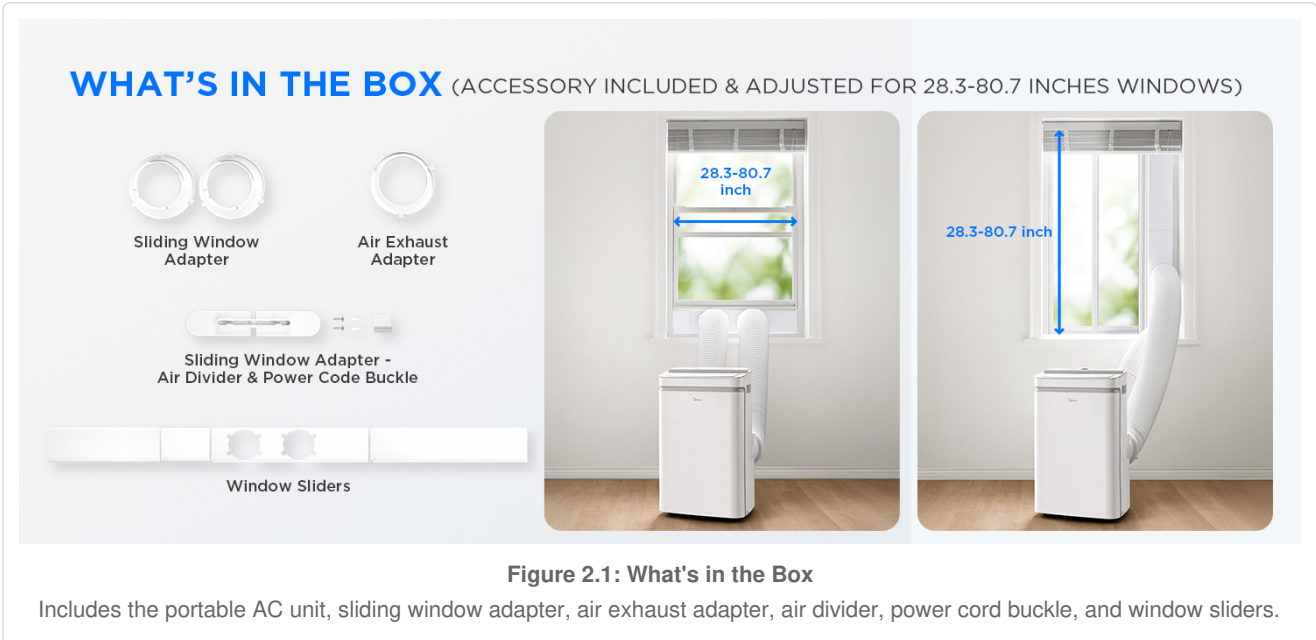




Figure 2.2: Front View of AC Unit

The main portable air conditioner unit with its control panel and air outlet.

3. SETUP AND INSTALLATION

Proper installation is crucial for the optimal performance of your portable air conditioner. Follow these steps carefully.

Window Kit Installation:

1. **Assemble the Window Kit:** Connect the sliding window adapter pieces to fit your window opening (adjustable for 28.3 to 80.7 inches). Secure the air exhaust adapter and air divider to the window panel.
2. **Install in Window:** Place the assembled window kit into the window frame. Close the window securely against the kit to create a seal.
3. **Connect Hoses to AC Unit:** Attach the intake and exhaust hoses to their respective ports on the back of the AC unit. Ensure they are securely fastened.
4. **Connect Hoses to Window Kit:** Extend the dual hoses and connect them to the air exhaust adapter on the window kit. Ensure a tight seal to prevent air leakage.

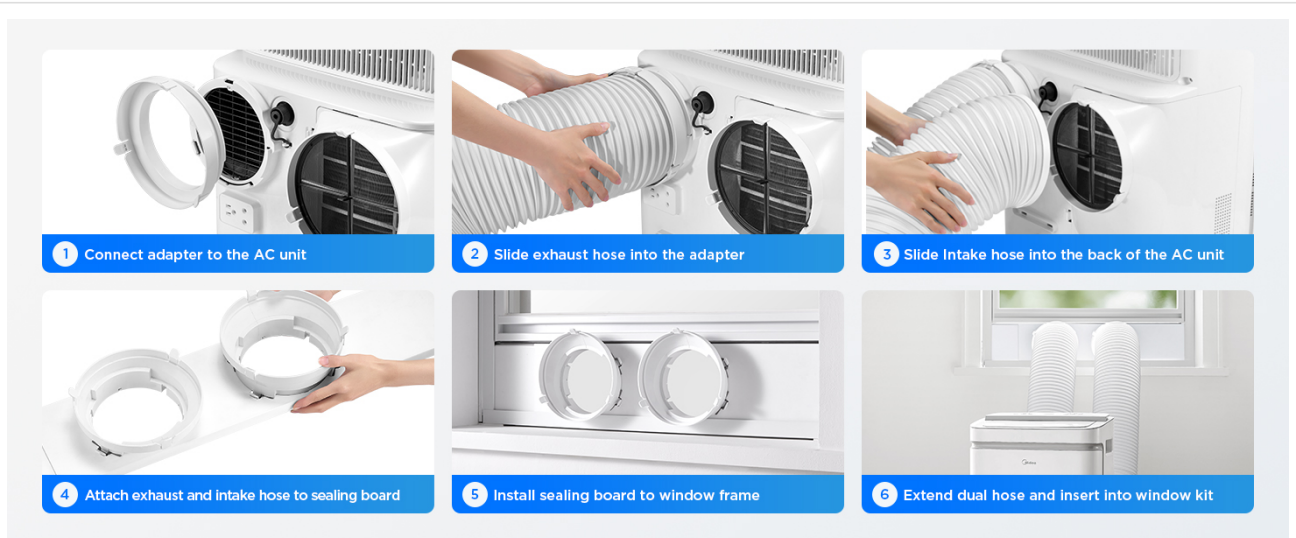


Figure 3.1: Window Kit Assembly and Hose Connection

Visual guide for connecting hoses to the AC unit and installing the window kit.



Figure 3.2: Window Kit Dimensions and Orientation

The window kit is adjustable for various window sizes and can be installed horizontally or vertically.

Installation Videos:

Midea Duo Smart Portable Air Conditioner Installation Video

This video provides a detailed guide on installing the Midea Duo Smart Portable Air Conditioner, including window kit setup and hose connections.

Midea Dual Hose Portable AC Quick Start Guide

4. OPERATING INSTRUCTIONS

Your Midea portable AC offers various modes and control options for personalized comfort.

Control Panel and Remote:

The unit features an intuitive control panel on top and comes with a remote control for convenient adjustments.

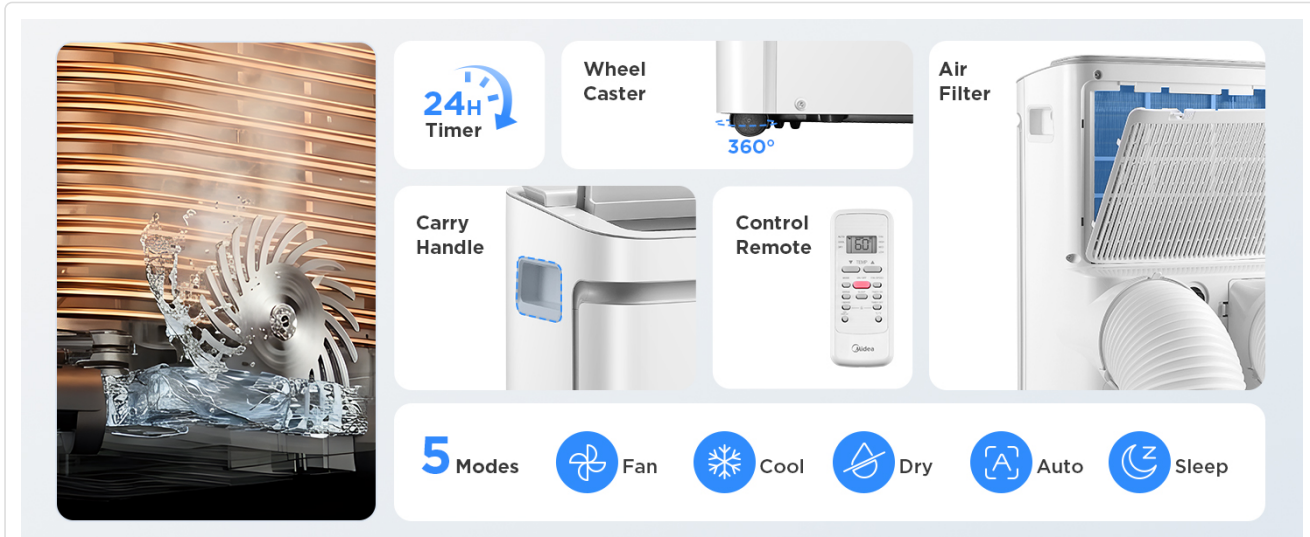


Figure 4.1: Control Panel

Use the control panel to select modes, adjust temperature, and set the timer.

POWERFUL COOLING PERFECTLY BALANCED

Evenly and Efficiently Circulates Air
Throughout the Entire Room

Midea Dual Hose Portable AC



Other Single Hose Portable AC



Figure 4.2: Remote Control

The included remote allows for convenient operation from a distance.

Operating Modes:

- **Cool Mode:** Provides powerful cooling to lower room temperature.
- **Fan Mode:** Circulates air without cooling, ideal for ventilation.
- **Dry Mode:** Dehumidifies the room, removing excess moisture.
- **Auto Mode:** Automatically selects the operating mode based on the ambient temperature.

- **Sleep Mode:** Adjusts temperature and fan speed for comfortable sleep while conserving energy.

Smart Control Features:

Connect your Midea portable AC to your home Wi-Fi network to enable smart control via the SmartHome app, Amazon Alexa, or Google Assistant.

- **SmartHome App:** Download the SmartHome app to control your AC from your smartphone or smartwatch. Adjust temperature, change modes, set schedules, and monitor status remotely.
- **Voice Control:** Integrate with Alexa or Google Assistant for hands-free operation. Use voice commands to turn the unit on/off, adjust temperature, or change settings.



Figure 4.3: SmartHome App Control

Control your AC remotely using the dedicated SmartHome application on your mobile device.

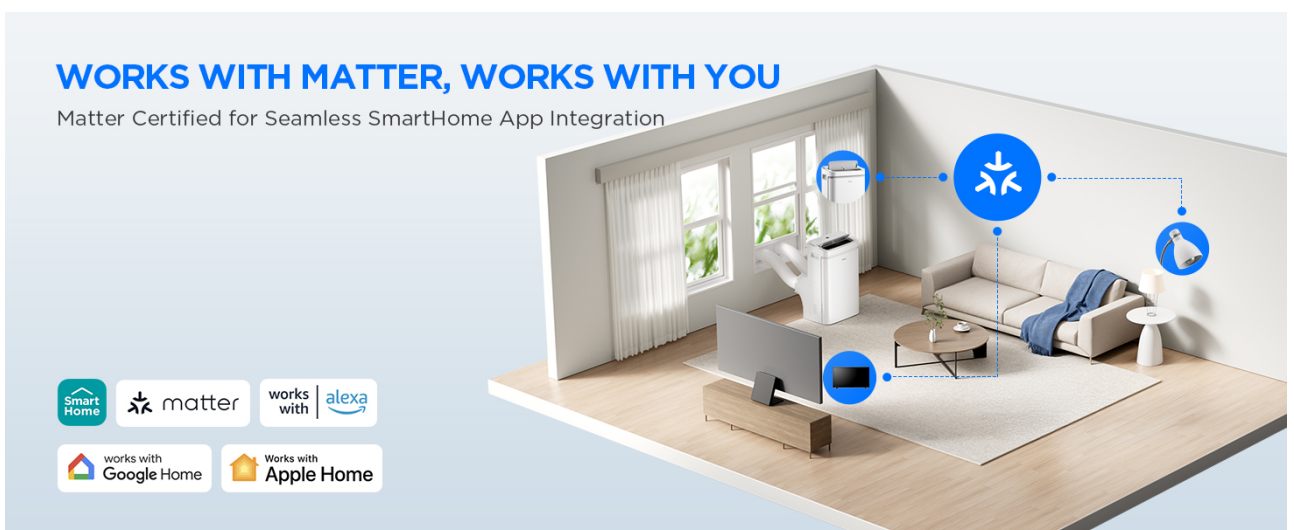


Figure 4.4: Voice Assistant Integration

Seamlessly control your AC using voice commands with Amazon Alexa or Google Assistant.

5. MAINTENANCE

Regular maintenance ensures the longevity and efficient operation of your Midea portable air conditioner.

Cleaning the Air Filter:

The unit is equipped with an Air Fresh Filter to capture dust and particles. A dirty filter can reduce cooling efficiency and airflow. Clean the filter regularly, typically every two weeks, or more often depending on usage and air quality.

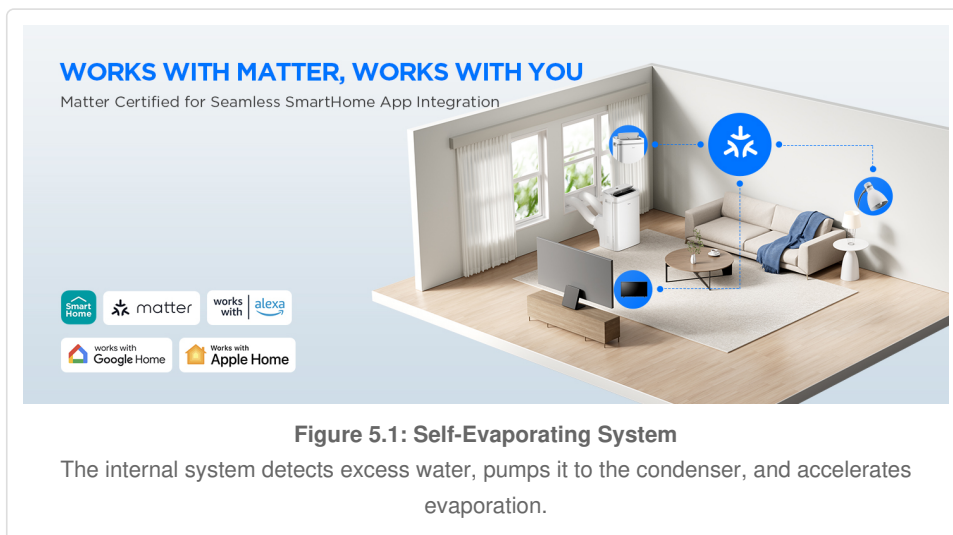
1. **Turn Off and Unplug:** Always turn off the unit and unplug it from the power outlet before cleaning.
2. **Remove Filter:** Locate the air filter access panel (usually at the back or side of the unit) and carefully remove the filter.
3. **Clean Filter:** Wash the filter with warm, soapy water. Rinse thoroughly and allow it to air dry completely before reinserting. Do not use harsh chemicals or abrasive cleaners.
4. **Reinstall Filter:** Once dry, carefully slide the filter back into its slot and close the access panel.

Unit Exterior Cleaning:

Wipe the exterior of the unit with a soft, damp cloth. Do not use abrasive cleaners or solvents that could damage the surface.

Drainage:

The Midea portable AC features a self-evaporating condensation system, which typically eliminates the need for manual drainage. However, in very humid conditions, the internal water tank may fill up. If this occurs, the unit will stop operating and display an error code. Refer to the troubleshooting section for instructions on how to drain the unit.



6. TROUBLESHOOTING

Before contacting customer support, please refer to the following common issues and solutions.

Problem	Possible Cause	Solution
Unit does not turn on	No power, tripped circuit breaker, power cord not fully plugged in.	Check power supply, reset circuit breaker, ensure plug is fully inserted.
Insufficient cooling	Dirty air filter, blocked air intake/exhaust, room too large, windows/doors open, temperature setting too high.	Clean air filter, clear obstructions, ensure proper room size (up to 550 sq ft), close windows/doors, lower temperature setting.

Problem	Possible Cause	Solution
Unit is noisy	Unit not on a level surface, fan speed too high, internal components vibrating.	Place unit on a level surface, reduce fan speed, ensure no loose parts. Inverter technology minimizes noise, but some operational sound is normal.
Water leakage	Unit not level, drain plug not properly sealed, excessive humidity causing internal tank overflow.	Ensure unit is level. Check drain plug. If internal tank is full, drain water manually (refer to manual for specific drainage port location).
Remote control not working	Dead batteries, obstruction between remote and unit, remote out of range.	Replace batteries, remove obstructions, operate remote within specified range.

7. SPECIFICATIONS

Detailed technical specifications for the Midea 14,000 BTU Dual Hose Portable Air Conditioner.

Feature	Detail
Model Number	MAP12DV1XWT-A
Cooling Power (ASHRAE)	14,000 BTU
Cooling Power (SACC)	12,000 BTU
Coverage Area	Up to 550 Sq Ft
Noise Level	47 Decibels
Dimensions (D x W x H)	15.63"D x 17.36"W x 28.62"H
Item Weight	55.3 Pounds
Voltage	115 Volts
Wattage	1250 watts
Refrigerant	R-32
Filter Type	Air Fresh Filter
Control Method	App, Remote, Voice (Alexa, Google Assistant)
Window Opening Max Width	63.86 Inches
Window Opening Min Height	28.3 Inches
Window Opening Min Width	19.05 Inches

8. WARRANTY AND SUPPORT

Warranty Information:

Midea offers a one-year limited warranty on parts and labor from the original purchase date for this product. Please retain your proof of purchase for warranty claims.

Customer Support:

For further assistance, technical support, or warranty inquiries, please visit the official Midea website or contact their customer service department. You can also find more information on the [Midea Store on Amazon](#).