

[Manuals.plus](#) /

› [Baseus](#) /

› Baseus Bowie MC2 Open Ear Clip-On Earbuds User Manual

Baseus Bowie MC2

Baseus Bowie MC2 Open Ear Clip-On Earbuds User Manual

Model: Bowie MC2 (A0102F)

1. INTRODUCTION

The Baseus Bowie MC2 Open Ear Clip-On Earbuds are designed for comfortable, all-day listening while maintaining environmental awareness. Featuring CloudComfort 2.0 design, LDAC Hi-Res Audio, Bluetooth 6.0, and IP67 waterproofing, these earbuds are suitable for various activities.



Image: Baseus Bowie MC2 Earbuds and their charging case.

Your browser does not support the video tag.

Video: Overview of Baseus Bowie MC2 Clip-On Comfortable Earbuds. This video demonstrates the design and comfort features of the earbuds.

2. PACKAGE CONTENTS

Verify that all items are present in your package:

- Baseus Bowie MC2 Earbuds
- M/L/XL Ear Cushions
- USB-C Cable



What's in the Box

- Bowie MC2
- M/L/XL Ear Cushions
- USB-C Cable

Image: Contents of the Baseus Bowie MC2 package.

3. SETUP GUIDE

3.1 Charging the Earbuds and Case

Before first use, fully charge the earbuds and charging case. Connect the provided USB-C cable to the charging port on the case and a power source. The indicator light on the case will show charging status.



CloudComfort 2.0

Wrap-Around Cushioning

Multiple sizes to tailor your fit. A gentle, secure grip for all-day comfort. Feels like a cloud embracing your ears.



SGS-Certified
Wearing Comfort



TÜV Rheinland-Certified
Comfortable Fit

Image: Baseus Bowie MC2 earbuds in their charging case.

3.2 Ear Cushion Installation

The Bowie MC2 earbuds come with M, L, and XL ear cushions. Choose the size that provides a secure and comfortable fit. To install or replace:

1. Select the appropriate cushion size.
2. Gently remove the existing cushion if present.
3. Align the opening of the new cushion with the sound unit and stretch it over the earbud. Lightly rotate to ensure it is properly seated.



Image: Step-by-step guide for installing ear cushions.

Your browser does not support the video tag.

Video: Instructions on how to replace ear cushions.

3.3 Wearing the Earbuds

Place the left and right earbuds in the correct ears. Position the speaker outlet toward your ear canal and ensure the button faces upward. The ergonomic C-ring design provides a stable fit.

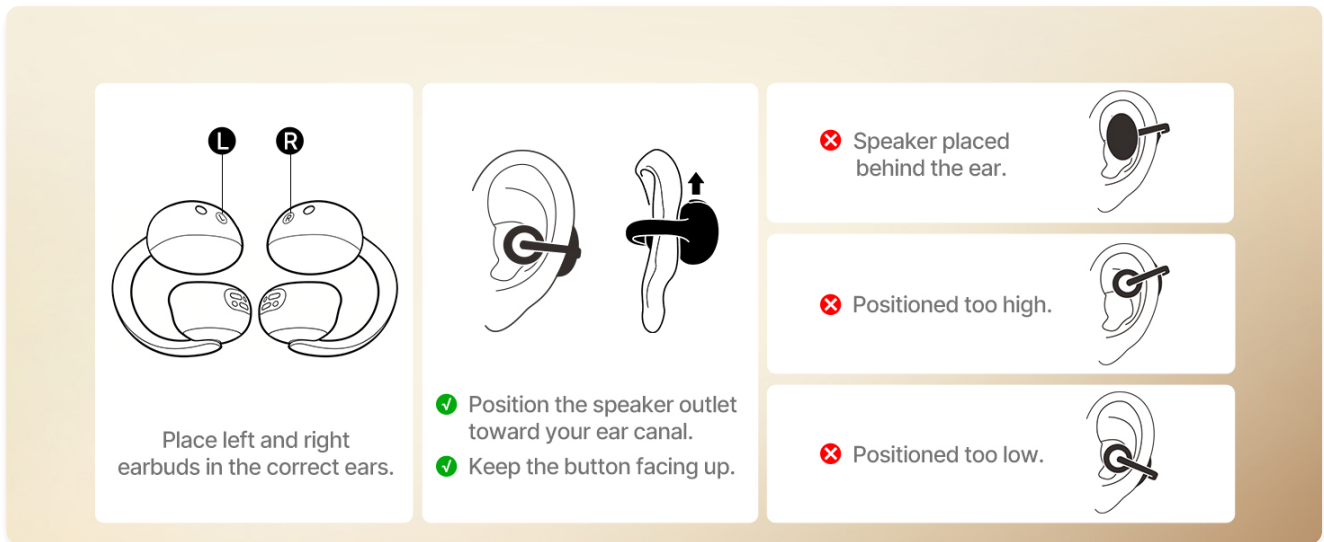
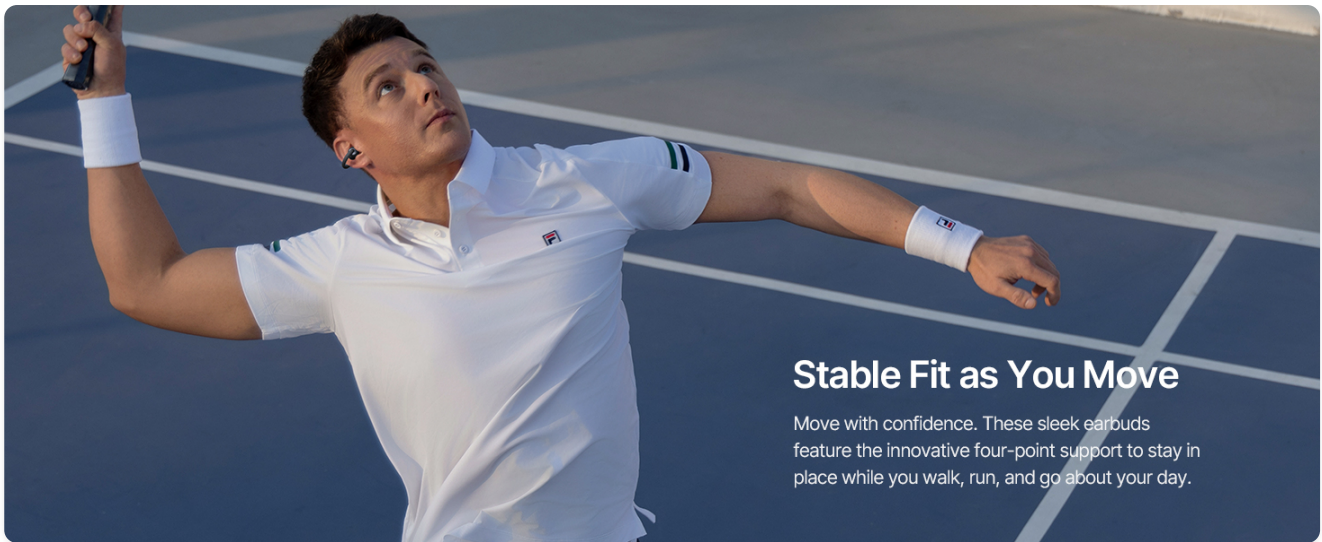


Image: Proper wearing instructions for the earbuds.



Stable Fit as You Move

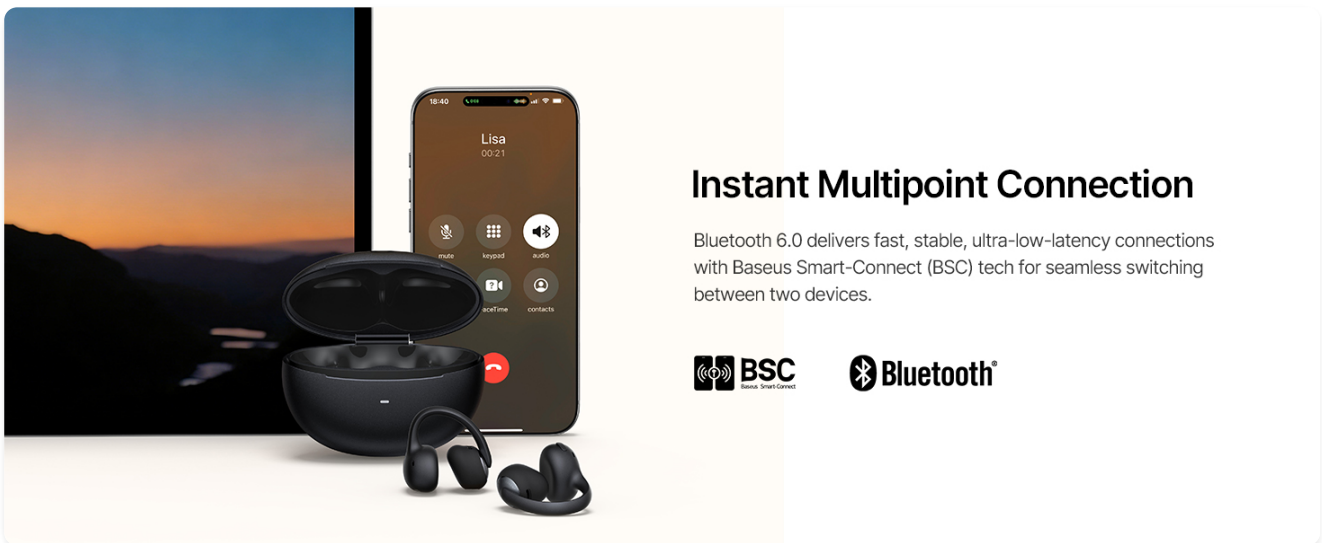
Move with confidence. These sleek earbuds feature the innovative four-point support to stay in place while you walk, run, and go about your day.

Image: Earbuds providing a stable fit during movement.

3.4 Bluetooth Pairing

To pair your earbuds with a device:

1. Open the charging case. The earbuds will enter pairing mode.
2. On your device (smartphone, tablet, etc.), enable Bluetooth.
3. Search for "Baseus Bowie MC2" in the list of available devices and select it to connect.



Instant Multipoint Connection

Bluetooth 6.0 delivers fast, stable, ultra-low-latency connections with Baseus Smart-Connect (BSC) tech for seamless switching between two devices.



Image: Bluetooth 6.0 connectivity for quick pairing.

3.5 Baseus App Installation

Download the free Baseus App (available for iOS & Android) to unlock additional features and customization options. The app allows for EQ adjustments, firmware updates, and more.

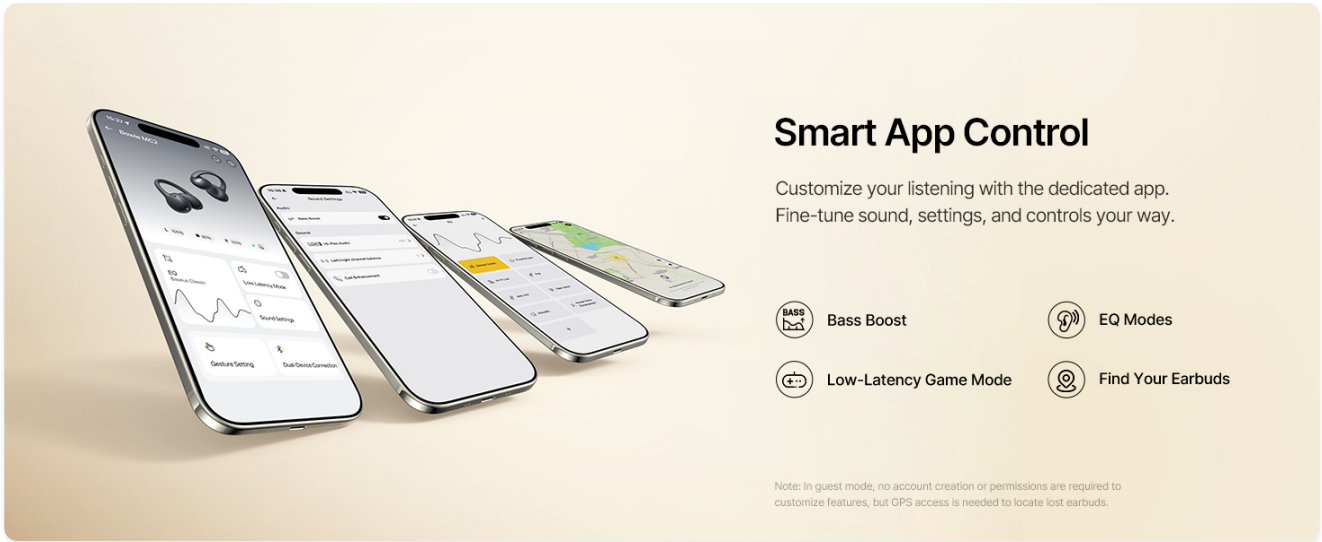


Image: Smart App Control interface for customizing settings.

4. OPERATING INSTRUCTIONS

4.1 Button Controls

The earbuds feature physical buttons for precise control:

| Function | Action |
|----------------------|-------------------------|
| Play/Pause | Single Press |
| Next Track | Double Press |
| Previous Track | Triple Press |
| Volume Up | Press and Hold for 1.5s |
| Volume Down | Press and Hold for 1.5s |
| Answer or End a Call | Single Press |
| Reject a Call | Press and Hold for 1.5s |



Image: Detailed button control functions.

4.2 Audio Features

The Bowie MC2 earbuds support LDAC Hi-Res Audio, delivering up to three times the audio detail compared to the SBC codec. Custom-sized 11mm tri-magnet dynamic drivers provide rich sound. SuperBass 3.0 enhances bass, and BISA spatial audio creates a multi-layered soundstage.

Feel Every Beat in Hi-Res

A powerful chip drives SuperBass 3.0, delivering rich, clear sound with up to 3× more detail, certified by Hi-Res Audio and LDAC.

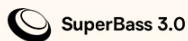


Image: High-resolution audio support with LDAC.

Deep Bass, Pristine Detail

Engineered acoustic design delivers natural, detail-rich sound with layered, low-distortion clarity—without sacrificing comfort.

Four-Layer Metallic Diaphragm
PU+PU+TPE with nano-microcrystal coating

11 mm Tri-Magnet
Dynamic Driver System

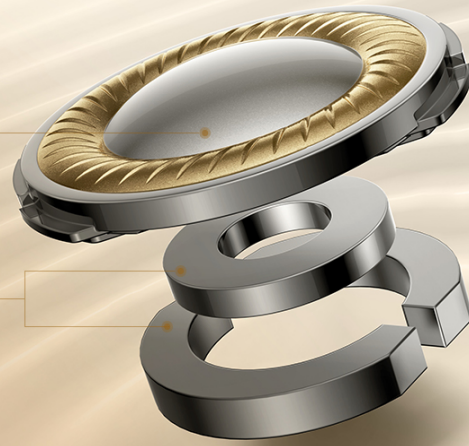


Image: Internal components of the earbud driver for deep bass and pristine detail.

Sound That Feels Alive

BISA separates bass, vocals, and highs in each ear, simulating multiple sound sources in 3D space. Enjoy multi-layer depth, natural reverbs, and lifelike soundstage.

10X Processing power⁴ **10X** Wider soundstage⁴



Note: To enable BISA Spatial Audio, update your earbuds to the latest version via the Basesus App.

Image: BISA spatial audio for an immersive listening experience.

Your browser does not support the video tag.

Video: Grammy Winner Recommended Audio, highlighting the sound quality.

4.3 Call Features

The earbuds are equipped with four directional beamforming microphones and AI-enhanced technology to focus on your voice and reduce background noise, ensuring clear calls even in noisy environments.

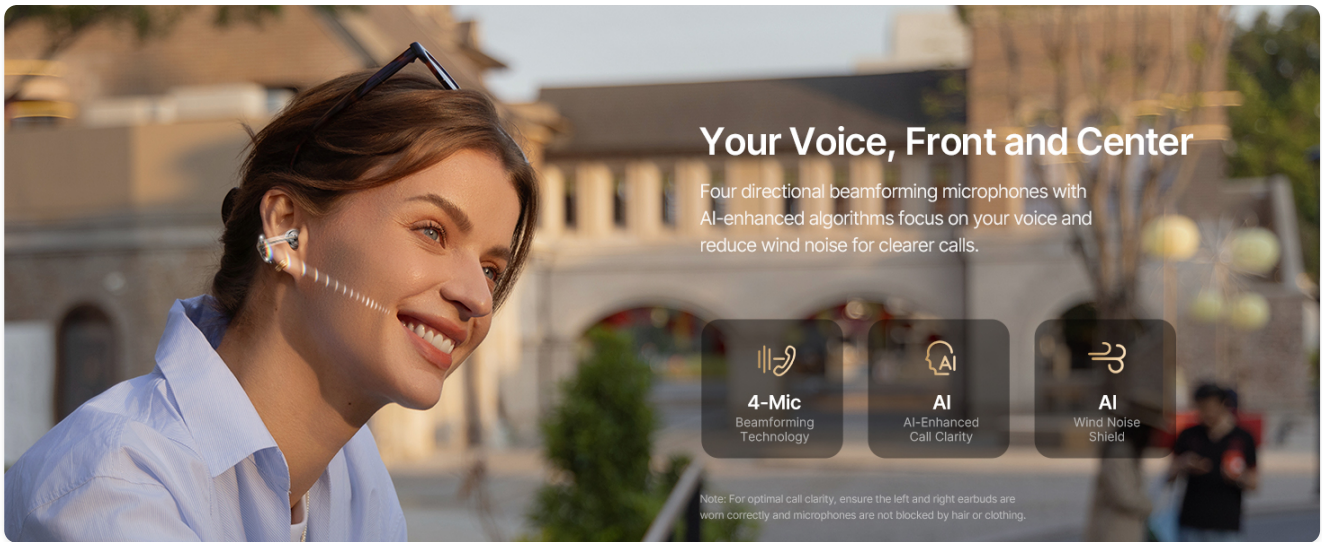
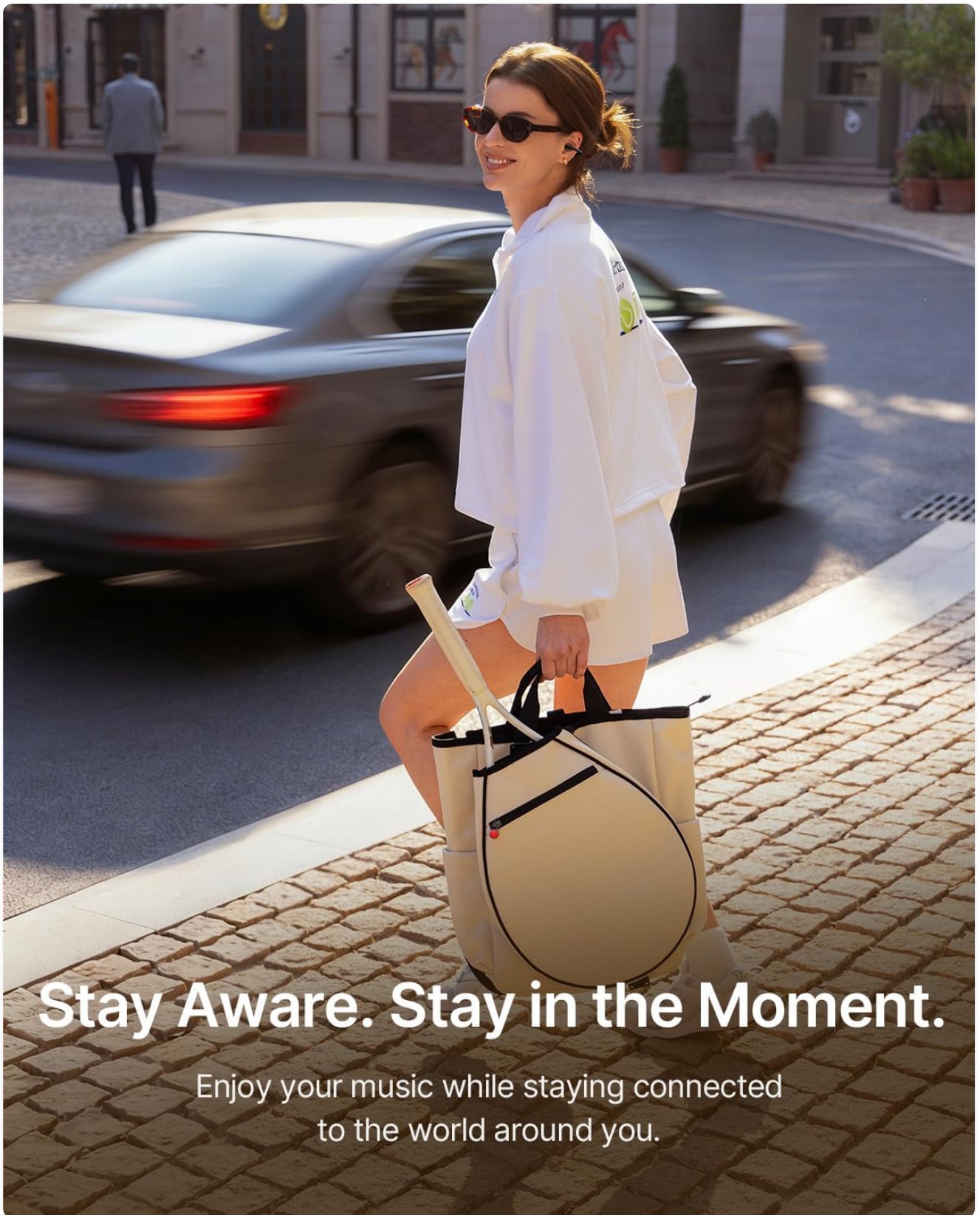


Image: 4-Mic AI Clear Call technology for enhanced voice clarity.

4.4 Open-Ear Awareness

The open-ear design allows you to enjoy your audio while remaining aware of your surroundings. This feature is ideal for commuting, outdoor activities, and situations where situational awareness is important.



Stay Aware. Stay in the Moment.

Enjoy your music while staying connected
to the world around you.

Image: User maintaining awareness of surroundings while listening to audio.

4.5 Multi-point Connection

Bluetooth 6.0 with Baseus Smart-Connect (BSC) technology enables seamless switching between two connected devices, such as a smartphone and a laptop.

Cloud-Light Comfort, Chosen by Grammy Winners

Baseus Bowie MC2 Open-Ear Earbuds



CloudComfort 2.0



Detachable Air Cushions



Detail-Rich Natural Sound



SuperBass 3.0



55-Hour Battery Life



IP67 Waterproof

Note:

1. LDAC supports high-quality audio transmission at up to 990 kbps, delivering up to 3* the audio detail compared to the SBC codec (328 kbps). Enable LDAC mode in the Baseus app. LDAC is compatible with Android devices only.
2. Battery life is based on continuous audio playback tests conducted by the Baseus Lab at 50% volume.
3. The IP67-rated protection applies to earbuds only, while the charging case features standard protection.
4. All the data is sourced from the Baseus Lab; results may vary from actual use.
5. CNET is a trademark of Ziff Davis, LLC. Used under license. Reprinted with permission. © 2025 Ziff Davis, LLC. All Rights Reserved.

Image: Instant Multipoint Connection for seamless device switching.

4.6 Find Your Earbuds Feature

If your earbuds are misplaced, use the Baseus App to locate them. This feature provides peace of mind by helping you find your earbuds quickly.

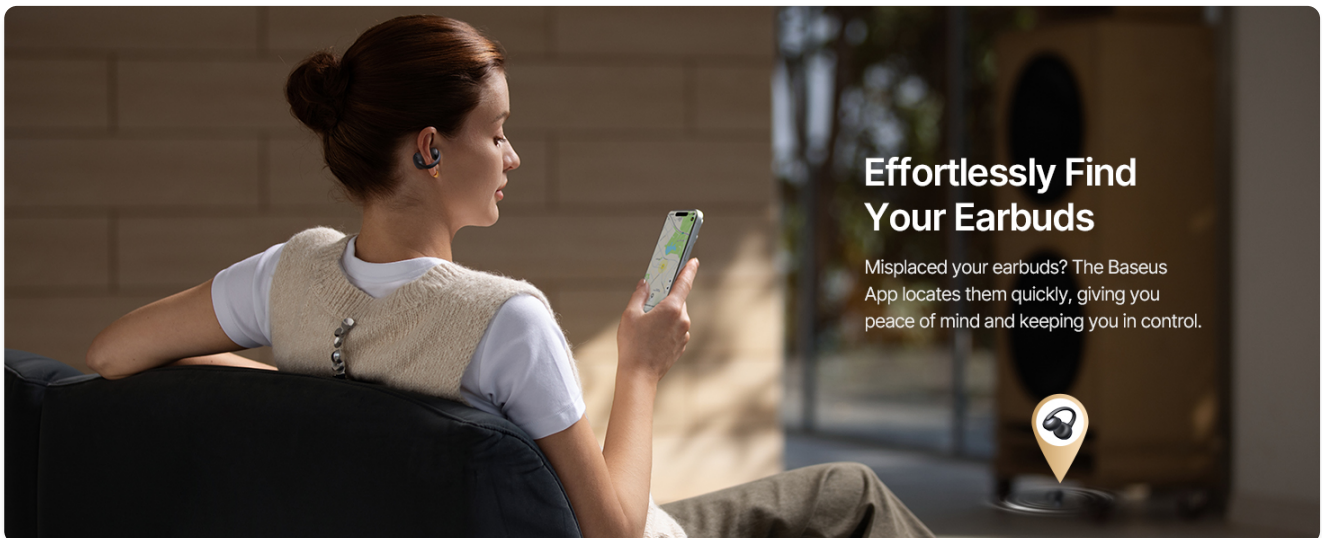


Image: The 'Find Your Earbuds' feature in the Baseus App.

5. BATTERY LIFE AND CHARGING

The earbuds offer up to 11.5 hours of playtime per charge and up to 55 hours with the charging case (with SuperBass 3.0 on). A 10-minute quick charge provides approximately 3 hours of playtime.



Image: Battery life details for the earbuds and charging case.

6. MAINTENANCE

6.1 Water Resistance

The earbuds are IP67 waterproof, making them resistant to sweat, rain, dust, and splashes. This ensures reliable performance during workouts and everyday use.

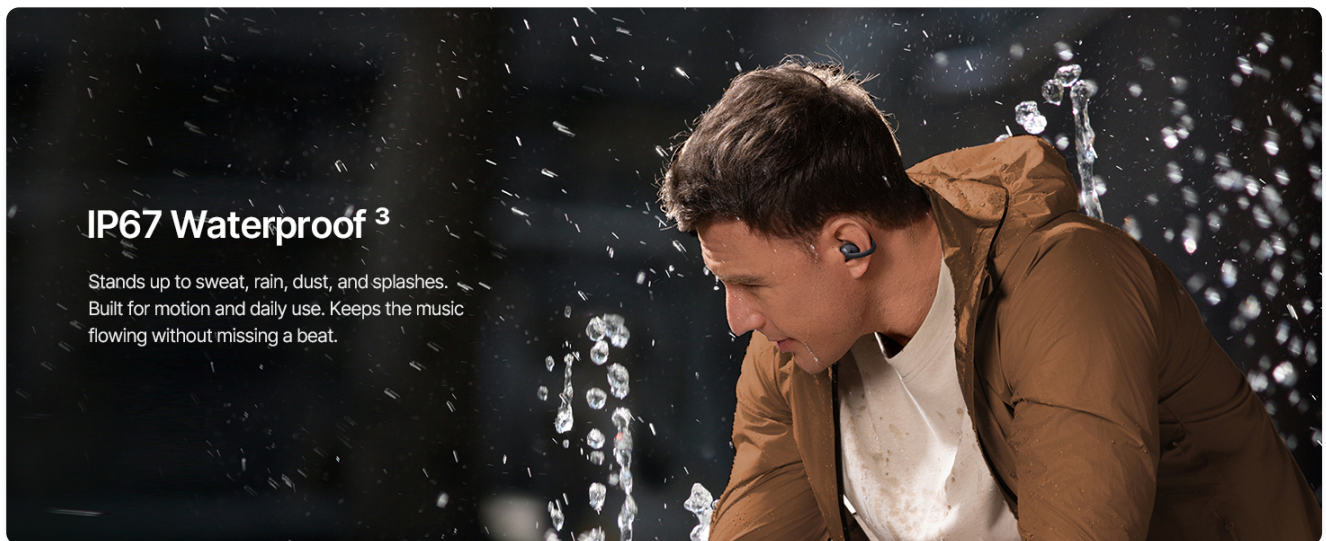


Image: IP67 waterproof rating for durability.

6.2 Cleaning

Regularly clean your earbuds and charging case with a soft, dry cloth. For the ear cushions, you may gently wipe them with a damp cloth and mild soap, ensuring they are completely dry before reattaching. Avoid using harsh chemicals or abrasive materials.

7. TROUBLESHOOTING

Here are answers to common questions:

Q: How to ensure clear calls on my Baseus Bowie MC2?

A: Wear earbuds on the correct L/R sides with buttons always facing upward. Keep mic ports clean and free of debris.

For clearest call quality, use in quieter environments. Call clarity may also vary slightly depending on your connected device. Enabling the Call Enhancement function in the Baseus App is also recommended.

Q: How can I increase the volume on my Baseus Bowie MC2?

A: For iPhone: Disable Reduce Loud Audio in Settings > Sounds & Haptics > Headphone Safety. For Samsung: Disable Media Volume Limit in Settings > Sounds & Vibration > Volume > More. For Android: In Bluetooth Settings, enable Absolute Volume. Alternatively, enable the app's Powerful Bass EQ Mode. Ensure earbuds are worn correctly as instructed in the manual: place left and right earbuds with buttons upward, sound outlets aligned with ear canal openings, and fit them closely to your ears.

Q: How to upgrade OTA/software?

A: Simply download the free Baseus App (iOS & Android), connect your earbuds, then go to App Homepage > Settings (top right) > Version to check and install the latest firmware update. The app can be used normally without registering or logging into an account.

Q: How to ensure clear calls on my Baseus Bowie MC2?

A: Wear earbuds on the correct L/R sides with buttons always facing upward. Keep mic ports clean and free of debris. For clearest call quality, use in quieter environments. Call clarity may also vary slightly depending on your connected device. Enable Call Enhancement function in Baseus APP is also a good way.

Q: How can I increase the volume on my Baseus Bowie MC2?

A: iPhone: Disable Reduce Loud Audio: Settings>Sounds & Haptics>Headphone Safety.
Samsung: Disable Media Volume Limit: Settings>Sounds & Vibration>Volume>More.
Android: Bluetooth Settings>Enable Absolute Volume. Or enable the App's Powerful Bass EQ Mode.
Wear the earbuds correctly as instructed in the manual can effectively achieve normal volume: place left and right earbuds with buttons upward, sound outlets aligned with ear canal openings, and fit them closely to your ears.

Q: How to upgrade OTA/software?

A: Simply download the free Baseus App (iOS & Android), connect your earbuds, then go to App Homepage → Settings (top right) → Version to check and install the latest firmware update. (The app can be used normally without registering or logging into an account.)

Image: Frequently Asked Questions for troubleshooting.

8. SPECIFICATIONS

| Feature | Detail |
|-------------------------|----------------------|
| Brand | Baseus |
| Model Name | Baseus Bowie MC2 |
| Model Number | A0102F |
| Ear Placement | Open Ear |
| Form Factor | True Wireless |
| Connectivity Technology | Wireless (Bluetooth) |
| Bluetooth Version | 6.0 |
| Bluetooth Range | 10 Meters |
| Control Type | Button Control |

| Feature | Detail |
|------------------------|--|
| Battery Average Life | 55 Hours (with charging case) |
| Battery Charge Time | 2 Hours |
| Water Resistance Level | IP67 Waterproof |
| Audio Driver Type | Dynamic Driver |
| Audio Driver Size | 11 Millimeters |
| Audio Latency | 38 Milliseconds |
| Impedance | 16 Ohms |
| Frequency Response | 20 KHz |
| Item Weight | 105 Grams |
| Carrying Case Weight | 43 Grams |
| Material | Acrylonitrile Butadiene Styrene (ABS), Polycarbonate (PC) |
| Additional Features | 4-Mic AI Clear Calls, Hi-Res Wireless & LDAC, Super Bass 3.0, Wrap-Around CloudComfort 2.0 |

9. WARRANTY & SUPPORT

9.1 Warranty Information

The Baseus Bowie MC2 Open Ear Clip-On Earbuds come with a 2-Year Manufacturer Warranty. Please retain your proof of purchase for warranty claims.

9.2 Customer Support

For further assistance, technical support, or to access additional resources, please refer to the Baseus App or visit the official Baseus website. The app provides access to firmware updates and personalized settings.