

## FTVOGUE FTVOGUEvbtuizsymc

# FTVOGUE Level Controller Switch Module User Manual

Model: FTVOGUEvbtuizsymc

## INTRODUCTION

---

This manual provides detailed instructions for the installation, operation, and maintenance of the FTVOGUE Level Controller Switch Module. This module is designed for automatic water level management in applications such as water towers and pools, ensuring efficient and reliable control of water pumps. Please read this manual thoroughly before installation and operation.

## SAFETY INFORMATION

---

**WARNING:** Electrical shock hazard. Always disconnect power before installation or maintenance. Installation should be performed by a qualified individual or under professional supervision. Ensure all wiring complies with local electrical codes and safety standards.

- Do not expose the module to moisture, rain, or extreme temperatures beyond its specified operating range.
- Verify the input voltage (9-12VDC) before connecting to power. Incorrect voltage can damage the module.
- Ensure all connections are secure and insulated to prevent short circuits.
- Keep out of reach of children.

## PRODUCT FEATURES

---

- **Automatic Water Level Control:** Efficiently manages water levels, activating pumps as needed to maintain desired levels.
- **Compact Design:** Space-saving and lightweight, allowing for straightforward installation in various environments.
- **High Energy Efficiency:** Operates with low power consumption while providing a high switching capacity for connected devices.
- **Easy Probe Replacement:** Designed to use standard household wire as water level probes, eliminating the need for specialized or additional purchases.
- **Reliable Performance:** Engineered for stability and consistent operation under various conditions, suitable for water tower and pool applications.

## PACKAGE CONTENTS

---

- 1 x FTVOGUE Level Controller Switch Module

*Note: Connection cables and water level probes are not included. Standard household wire can be used for probes.*

## SETUP AND INSTALLATION

---

The FTVOGUE Level Controller Switch Module is designed for straightforward installation. Follow these steps carefully to ensure proper function and safety.

### 1. Preparing Water Level Probes

The module utilizes simple wires as water level probes. Take standard household wire and strip approximately 1 cm (0.4 inches) of insulation from the end of each wire. These stripped ends will act as the water level sensors. You will typically need three probes: a common ground probe, a low-level probe (to activate the pump), and a high-level probe (to deactivate the pump).

### 2. Wiring the Module

The module has clearly marked terminals for power input, probe connections, and relay output for controlling the pump. Refer to the image below for visual guidance.

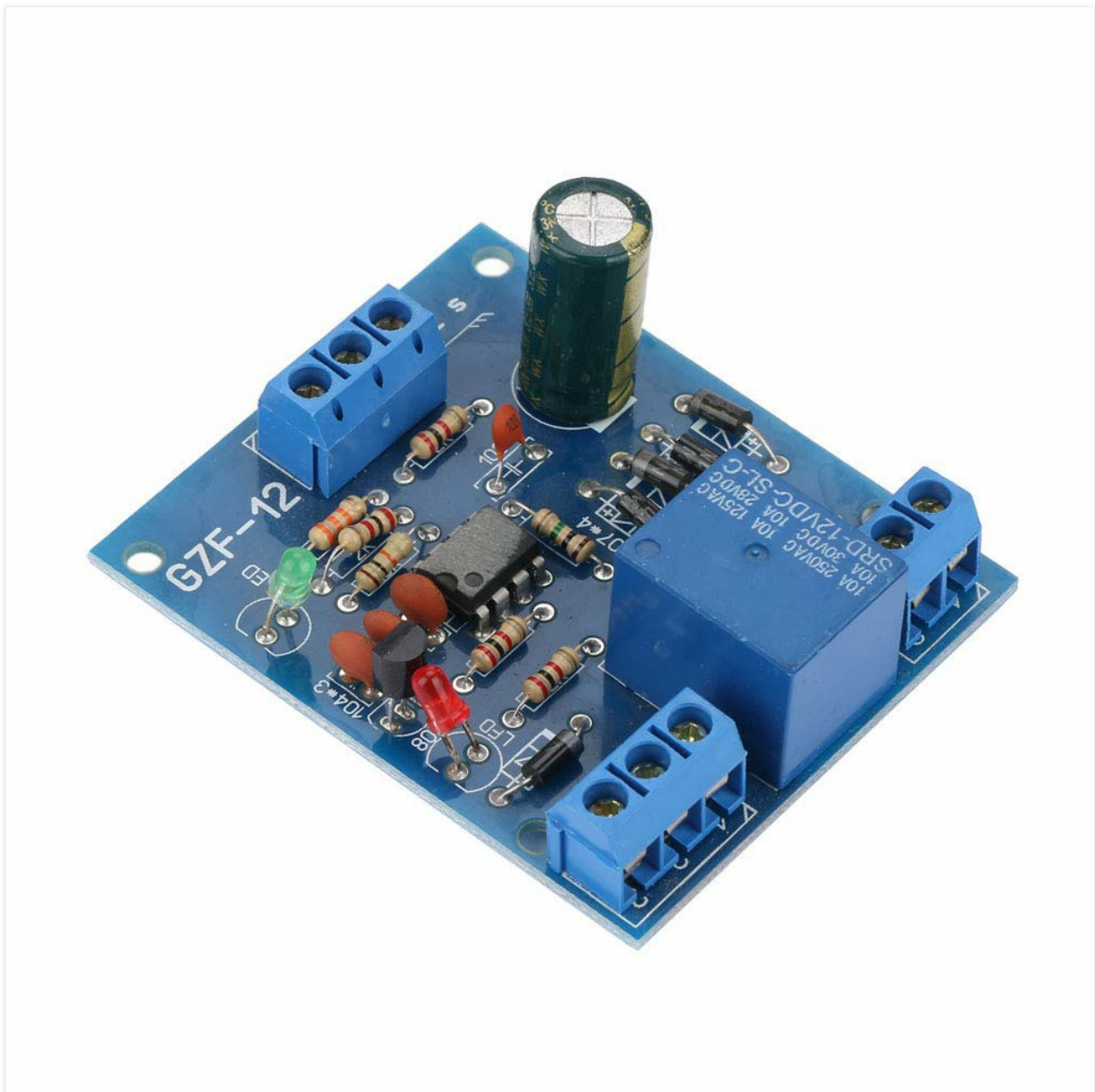


Image: Top-down view of the FTVOGUE Level Controller Switch Module, showing the input/output terminals, relay, and various electronic components.

- **Power Input (9-12VDC):** Connect a stable 9-12VDC power supply to the designated input terminals. Ensure correct polarity (positive to +, negative to -).
- **Probe Connections:** Connect your prepared water level probes to the module's probe terminals. These are typically labeled 'S' (Common), 'E' (Low Level), and 'F' (High Level).
- **Relay Output:** Connect the pump's control circuit to the relay output terminals. The relay acts as a switch to turn the pump on or off. Consult your pump's wiring diagram for proper connection to the relay's normally open (NO) or normally closed (NC) contacts, depending on your application.



Image: Close-up view of the FTVOGUE Level Controller Switch Module, highlighting the screw terminal blocks for electrical connections.

### 3. Probe Placement

Position the probes within your water tank or pool according to your desired water levels:

- **Common Probe (S):** Place this at the lowest point in the water container, ensuring it is always submerged. This acts as the reference point.
- **Low-Level Probe (E):** Position this at the minimum desired water level. When the water drops below this probe, the module will detect a low level and activate the pump.
- **High-Level Probe (F):** Position this at the maximum desired water level. When the water rises and makes contact with this probe, the module will detect a full level and deactivate the pump.

### 4. Testing

After all connections are secure and probes are positioned, apply power to the module. Test the system by

manually adjusting water levels or simulating them to ensure the pump activates when the water is low and deactivates when the water is full, as expected.

## OPERATING INSTRUCTIONS

---

Once properly installed and powered, the FTVOGUE Level Controller Switch Module operates automatically to maintain the desired water levels.

- When the water level drops below the **Low-Level Probe (E)**, the module's internal relay will activate, turning on the connected pump to begin filling the container.
- The pump will continue to run until the water level rises and makes contact with the **High-Level Probe (F)**. At this point, the module's relay will deactivate, turning off the pump.
- The module features LED indicators (typically one for power and one for relay status) to provide visual feedback on its operational state.

## MAINTENANCE

---

To ensure long-term reliable operation of your FTVOGUE Level Controller Switch Module, consider the following maintenance tips:

- **Probe Inspection:** Periodically inspect the water level probes for corrosion, mineral buildup, or damage, especially in hard water environments. Clean probes as necessary using a non-abrasive material to ensure accurate electrical contact.
- **Connection Check:** Regularly check all electrical connections to the module and pump for tightness and signs of wear or corrosion.
- **Environmental Conditions:** Ensure the module is kept dry and free from excessive dust or debris. Protect it from direct sunlight and extreme temperature fluctuations.
- **No User Serviceable Parts:** The module contains no user-serviceable parts. Do not attempt to open, modify, or repair the module yourself, as this will void any warranty and may pose a safety risk.

## TROUBLESHOOTING

---

If you encounter issues with your FTVOGUE Level Controller Switch Module, refer to the following troubleshooting guide:

### Problem: Pump Does Not Activate When Water Level is Low

- **No Power to Module:** Check the 9-12VDC power supply to the module. Ensure it is connected correctly, providing the specified voltage, and that the power source is active.
- **Incorrect Probe Connections:** Verify that the common (S) and low-level (E) probes are correctly wired to the module and are properly submerged or exposed as required.
- **Corroded Probes:** Inspect the probes for heavy corrosion or mineral buildup that might prevent electrical contact. Clean them if necessary.
- **Pump Connection:** Check the pump's power supply and its connection to the module's relay output. Ensure the pump itself is functional.

### Problem: Pump Does Not Deactivate When Water Level is High

- **Incorrect High-Level Probe Connection:** Verify that the high-level (F) probe is correctly wired and positioned to make contact with the water at the desired maximum level.
- **Corroded Probes:** Inspect the high-level probe for corrosion or buildup that might prevent electrical contact.
- **Common Probe Issue:** Ensure the common (S) probe is continuously submerged and making good

contact.

## Problem: Module LEDs Are Not Illuminating

- **No Power:** Double-check the 9-12VDC power input. Look for loose connections, a faulty power supply, or incorrect polarity.

## SPECIFICATIONS

---

<b>Product Name</b>	Level control switch module
<b>Voltage Input</b>	9-12VDC
<b>Weight</b>	Approx. 32g (1.1oz)
<b>Brand</b>	FTVOGUE
<b>Model Number</b>	FTVOGUEvbtuizsymc
<b>Manufacturer</b>	FTVOGUE
<b>Country of Origin</b>	China
<b>Included Components</b>	1 x Level Controller Switch Module (cables/probes not included)

## WARRANTY AND SUPPORT

---

For warranty information, technical support, or assistance with your FTVOGUE Level Controller Switch Module, please contact your retailer or the manufacturer, FTVOGUE, directly. Refer to your purchase documentation or the seller's information for specific contact details and warranty terms.