

## 1Mii B06T3

# 1Mii B06T3 Bluetooth 6.0 Receiver Instruction Manual

Model: B06T3 | Brand: 1Mii

## INTRODUCTION

---

The 1Mii B06T3 Bluetooth 6.0 Receiver is designed to transform your traditional wired home stereo systems, wired speakers, or audio systems into wireless Bluetooth-enabled devices. This allows you to stream high-quality audio from any Bluetooth-enabled device, such as a smartphone or tablet, without needing to replace your existing audio equipment.

### Key Features:

- **Bluetooth 6.0 Connectivity:** Provides a stable and reliable wireless connection for uninterrupted audio streaming.
- **Intuitive Rotary Knob Control:** Easily adjust volume, play/pause music, and skip tracks directly on the receiver.
- **Extended Wireless Range:** Enjoy streaming up to 98 feet (30 meters) for greater freedom of movement.
- **Dual Link Functionality:** Connects to two Bluetooth devices simultaneously, allowing seamless switching between audio sources.
- **Universal Compatibility:** Equipped with both RCA and 3.5mm AUX outputs for broad compatibility with various audio systems.
- **Non-Battery Design:** Operates via a wired power connection for continuous use and long-term durability.

## WHAT'S IN THE BOX

---

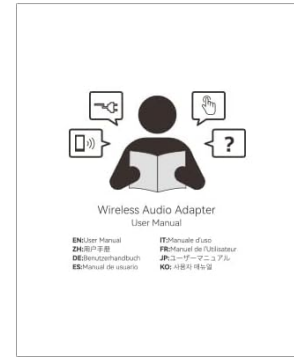
Please check the package contents to ensure all items are present:

- 1Mii Bluetooth Receiver (B06T3)
- USB Power Cable
- Power Adapter
- 3.5mm to RCA Audio Cable

- User Manual



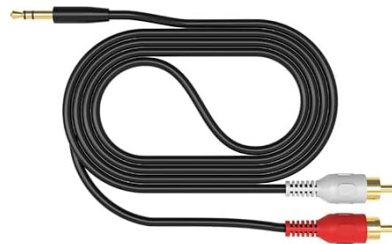
**1** 1Mii Bluetooth Receiver



**5** User Manual



**2** USB Power Cable



**3** 3.5mm to RCA Audio Cable



**4** Power Adapter

Image: The 1Mii B06T3 Bluetooth Receiver and its included accessories.

Video: A demonstration of the contents included in the 1Mii B06T3 package.

## SETUP INSTRUCTIONS

### 1. Connect the Receiver to Your Audio System

- Power On:** Plug the included USB power cable into the 1Mii B06T3 receiver and connect the other end to the power adapter. Plug the power adapter into a wall outlet. The receiver will power on automatically.
- Audio Connection:** Use the provided 3.5mm to RCA audio cable to connect the 1Mii B06T3 receiver to your home stereo system or wired speakers.
  - For RCA input: Connect the red and white RCA plugs from the cable to the corresponding red and white audio input jacks on your stereo/speakers. Connect the 3.5mm end to the AUX OUT port on the B06T3.
  - For 3.5mm AUX input: Connect a 3.5mm audio cable (not included, if not using RCA) from the AUX OUT port on the B06T3 to the 3.5mm AUX IN port on your speakers or stereo.

# Easy to Use

## Plug

Plug in the power, then connect your wired headphones (3.5mm) or speaker (RCA) to the receiver.



## Pair

Turn on Bluetooth on your phone and connect to the receiver



## Play

Play music from your phone and use the button to pause and play



Image: Visual guide for connecting the 1Mii B06T3 to an audio system.

Video: Instructions on how to connect two wired speakers using the B06T3 receiver.

## 2. First-Time Bluetooth Pairing

1. When powered on for the first time (no pairing history), the B06T3 will automatically enter pairing mode. The LED indicator will flash red and blue alternately.
2. On your Bluetooth-enabled device (e.g., smartphone, tablet), go to the Bluetooth settings.
3. Search for available devices and select "B06T3" from the list.
4. Once successfully connected, the LED indicator on the B06T3 will remain solid blue.

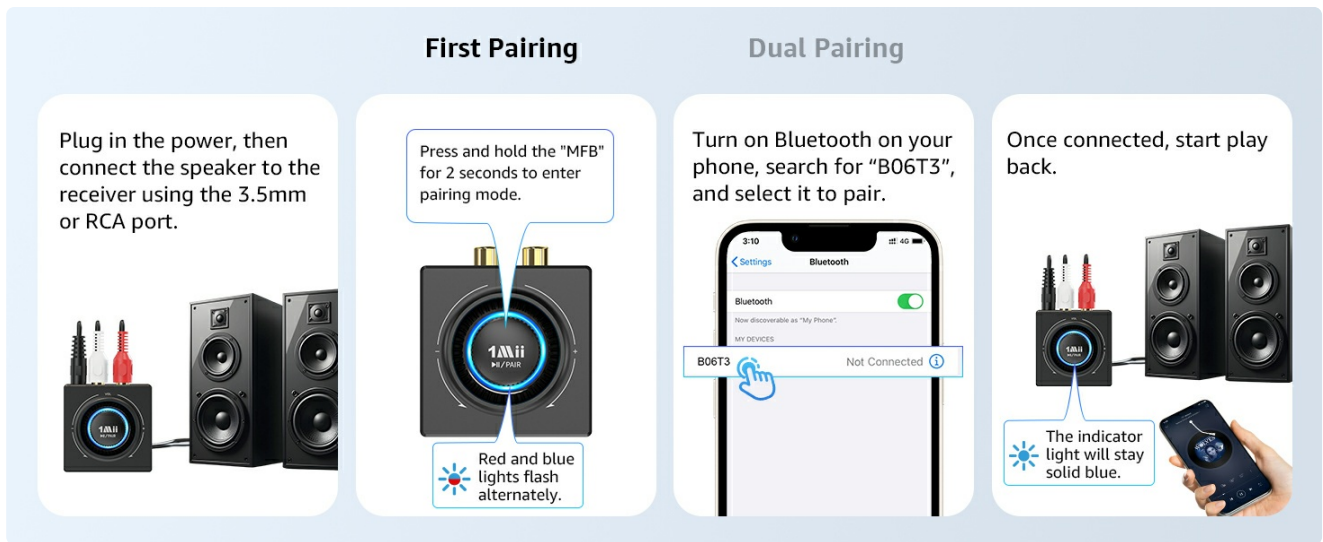


Image: Visual steps for pairing a Bluetooth device with the 1Mii B06T3.

Video: A guide on how to use the B06T3 Bluetooth receiver, including initial setup.

## OPERATING INSTRUCTIONS

### Basic Controls

The 1Mii B06T3 features an intuitive multi-function knob for easy control:

- **Volume Adjustment:** Rotate the multi-function knob clockwise to increase volume, counter-clockwise to decrease volume.
- **Play/Pause:** Press the multi-function button once while music is playing to pause, and press again to resume playback.
- **Next Track:** Double-press the multi-function button to skip to the next track.
- **Previous Track:** Triple-press the multi-function button to go back to the previous track.

# Precise Knob Control

Rotate to control volume, press to play or pause instantly.



Image: Detailed view of the precise knob control for the 1Mii B06T3.

## Dual Device Connection

The B06T3 can connect to two Bluetooth devices simultaneously, allowing for seamless switching between audio sources.

1. Connect the first device as described in the "First-Time Bluetooth Pairing" section. The LED will be solid blue.
2. To pair a second device, press and hold the multi-function button for 2 seconds to enter pairing mode again. The LED will flash red and blue alternately.
3. On your second Bluetooth-enabled device, search for "B06T3" and select it to pair.
4. Once the second device is successfully paired, the first device will disconnect automatically. The LED will flash purple.
5. To reconnect the first device, go to its Bluetooth settings and tap "B06T3". The LED will then remain solid purple, indicating two devices are paired.
6. To switch audio output, ensure playback is paused on the currently connected device before starting playback on the other.

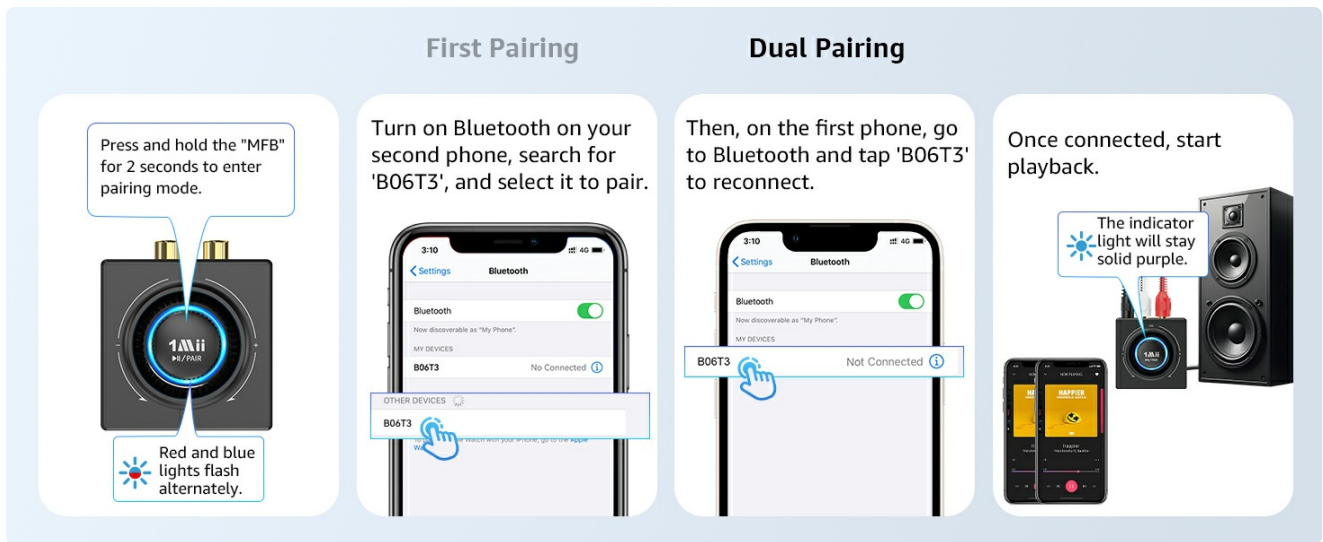


Image: Steps for dual pairing with the 1Mii B06T3.

Video: A demonstration of how to connect two phones to the B06T3 simultaneously.

## Auto Reconnect

If there is a connection history, the device will automatically reconnect to the last paired device approximately 7 seconds after power on. If the previously connected device is not powered on, press the multi-function button to enter pairing mode.

## Factory Reset

To clear all pairing records and perform a factory reset, press and hold the multi-function button for 8 seconds. The LED will flash purple 3 times, then red and blue alternately.

## MAINTENANCE

To ensure the longevity and optimal performance of your 1Mii B06T3 Bluetooth Receiver, follow these maintenance guidelines:

- **Cleaning:** Use a soft, dry cloth to clean the device. Avoid using abrasive cleaners, solvents, or strong chemicals, as these can damage the surface or internal components.
- **Storage:** Store the device in a cool, dry place away from direct sunlight, extreme temperatures, and high humidity.
- **Handling:** Handle the device with care. Avoid dropping it or subjecting it to strong impacts, which can cause internal damage.
- **Power:** Always use the provided power adapter and cable. Using incompatible power sources may damage the device.
- **Ventilation:** Ensure the device is placed in an area with adequate ventilation to prevent overheating.

## TROUBLESHOOTING

If you encounter issues with your 1Mii B06T3, please refer to the following common problems and solutions:

Problem	Possible Cause	Solution
---------	----------------	----------

Problem	Possible Cause	Solution
No power/LED indicator off	Power cable not connected properly or power adapter faulty.	Ensure the power cable is securely connected to both the receiver and the power adapter, and the adapter is plugged into a working outlet. Try a different outlet.
Cannot pair with Bluetooth device	Receiver not in pairing mode; Bluetooth on source device is off or already connected to another device; too many devices in range.	Press and hold the multi-function button for 2 seconds until the LED flashes red and blue alternately. Ensure Bluetooth is enabled on your source device and disconnect it from other devices. Move closer to the receiver.
No sound after successful pairing	Incorrect audio cable connection; volume too low on receiver or source device; incorrect input selected on stereo/speakers.	Verify audio cables are correctly connected to the AUX OUT of the B06T3 and the correct input on your stereo/speakers. Increase volume on both the B06T3 and your source device. Select the correct input source on your stereo/speakers.
Audio cutting out or poor quality	Distance from source device is too far; interference from other wireless devices; physical obstructions.	Move the source device closer to the B06T3. Reduce interference by moving other wireless devices away. Ensure there are no major obstructions between the devices.
Cannot connect a second device	First device not disconnected; pairing mode not re-entered.	Ensure the first device is paused or disconnected. Press and hold the multi-function button for 2 seconds to re-enter pairing mode for the second device.

## SPECIFICATIONS

Feature	Detail
Brand	1Mii
Model Number	B06T3
Connectivity Technology	Auxiliary, Bluetooth, RCA
Controller Type	Mechanical knob
Special Features	Bluetooth 6.0, Dual Link, Volume Control
Compatible Devices	Amplifier, Headphone, Smartphone, Speaker, Tablet
Connector Type	3.5mm Jack, RCA
Audio Output Mode	Stereo
Color	Black
Product Dimensions (D x W x H)	2.28" x 2.09" x 1.26" (5.8cm x 5.3cm x 3.2cm)

Feature	Detail
Audio Output Type	AUX, RCA
Wireless Technology	Bluetooth

## WARRANTY INFORMATION

---

The 1Mii B06T3 Bluetooth Receiver comes with a **12-month warranty** from the date of purchase. This warranty covers manufacturing defects and issues arising from normal use. Please retain your proof of purchase for warranty claims.

The warranty does not cover damage caused by misuse, accidents, unauthorized modifications, or failure to follow the instructions in this manual.

## CUSTOMER SUPPORT

---

If you have any questions, require technical assistance, or need to make a warranty claim, please contact 1Mii customer support through the following channels:

- **Manufacturer:** 1Mii
- **Seller:** ANKBIT INTERNATIONAL
- Refer to the contact information provided on the product packaging or the official 1Mii website for the most up-to-date support details.