

CRAFTZONE CZ6011A

CRAFTZONE CZ6011A Aluminum Dent Puller Kit User Manual

Model: CZ6011A | Brand: CRAFTZONE

1. INTRODUCTION AND PRODUCT OVERVIEW

The CRAFTZONE CZ6011A Aluminum Dent Puller Kit is designed for effective and non-marring removal of dents from various smooth surfaces. This comprehensive kit includes multiple pullers and accessories to address a range of dent sizes and applications.

Key Features:

- **Durable Construction:** Features a high-strength aluminum body for enhanced durability and resistance to bending compared to plastic models.
- **Strong Suction:** Equipped with a reinforced natural rubber suction cup and a metal-core handle for reliable pulling power.
- **Versatile Application:** Suitable for use on car bodies, glass panels, furniture, smooth tiles, and metal surfaces.
- **Comprehensive Kit:** Includes a large dent puller, two smaller pullers, a microfiber washing glove, a nano-scratch repair cloth, and nitrile gloves.

NOTE



- **EASY TO REPAIR**
- **DIFFICULT TO REPAIR**
- **IRREVERSIBLE**

**Paint Zones & Vehicle Frame Areas
& Front Grille Zones & Thick Plate Sections**

Image: Key components and material benefits of the CRAFTZONE dent puller.

2. PACKAGE CONTENTS

Verify that all items listed below are present in your CRAFTZONE CZ6011A Dent Puller Kit:

- 1 x Large Aluminum Dent Puller
- 2 x Small Dent Pullers (Orange)
- 1 x Microfiber Washing Glove
- 1 x Nano-Scratch Repair Cloth
- 1 x Pair of Nitrile Gloves
- 1 x Sponge Applicator



Image: All items included in the CRAFTZONE Dent Puller Kit.

3. SAFETY INFORMATION

- Always wear the provided nitrile gloves to protect your hands during operation.
- Ensure the surface is clean and dry before applying the suction cup to prevent slippage and damage.
- Do not use excessive force that could damage the surface or the tool.
- Keep out of reach of children.
- This tool is designed for smooth, non-porous surfaces. Do not use on rough, textured, or porous materials.

4. SETUP

The CRAFTZONE dent pullers require no assembly. They are ready for use directly out of the package. Ensure the suction cup and the target surface are clean and free of debris before beginning.

5. OPERATING INSTRUCTIONS

Follow these steps for effective dent removal:

1. **Prepare the Surface:** Clean the dented area thoroughly to ensure it is smooth and dust-free. Dry the surface completely.
2. **Soften the Material:** Pour hot water over the dented area. This helps to soften the material, making the dent easier to pull out.
3. **Position the Puller:** Adjust the handle of the dent puller to the open position. Place the suction cup firmly onto the center of the dent, ensuring it is on a level plane.
4. **Create Suction:** Press the suction cup down firmly against the surface to expel all air from underneath. Ensure the suction cup creates a strong, airtight seal. The dent must be larger than the suction cup base for proper adhesion.
5. **Pull the Dent:** Quickly pull the handle upward or horizontally, depending on the dent's location and shape. You should hear a pop as the dent is pulled out.
6. **Repeat if Necessary:** For deeper or more complex dents, repeat the process, changing the angle of the puller as needed. Multiple attempts may be required.
7. **Clean Up:** After dent removal, use the provided microfiber washing glove and nano-scratch repair cloth to clean and polish the treated area.



EASY TO USE



STEP 1 Pour hot water into the recess to ensure its surface is smooth and dust-free



STEP 2 Adjust the handle while quickly positioning the dent remover, making sure it is on a level plane



STEP 3 Vent the air (ensure the diameter is greater than that of the suction cup base)



STEP 4 Pull up on the handle. Note that uneven surfaces cannot be corrected and multiple attempts may be required

Image: Visual comparison of dented surfaces before and after using the tool.

6. VERSATILITY AND APPLICATIONS

The CRAFTZONE dent puller kit is designed for multi-surface use, making it a versatile tool for various household and automotive tasks:

- **Automotive:** Ideal for removing dents from cars, SUVs, and trucks.
- **Glass:** Can be used to handle glass panels or remove objects from glass surfaces.
- **Furniture:** Useful for moving or adjusting furniture with smooth, non-porous surfaces.
- **Tiles:** Assists in handling smooth tiles during installation or repair.
- **Screens:** Can be used for safely handling screens or other delicate flat objects.

WHY CHOOSE US



OURS

VS



OTHER

CRAFTZONE Aluminum Dent Puller Has Longer Service Life Than Plastic Models

Plastic has a strong plastic feel, is not sturdy, and is prone to damage



Image: Demonstrating the versatile applications of the dent puller kit.

7. IMPORTANT CONSIDERATIONS AND LIMITATIONS

For optimal results and to prevent damage, observe the following:

- Only use this dent puller on clean, smooth, and completely dry surfaces.
- Always pour hot water over the dent first to soften the material.
- Ensure the suction cup creates a strong seal. If the seal is weak, reposition and reapply.
- The dent must be larger than the suction cup itself for proper adhesion and effective pulling.
- This tool is most effective on minor to medium dents. It may not be suitable for severe damage or dents in structural areas.
- Uneven surfaces or areas with significant creases may not be correctable with this tool.

COMPARISON OF USAGE EFFECTS

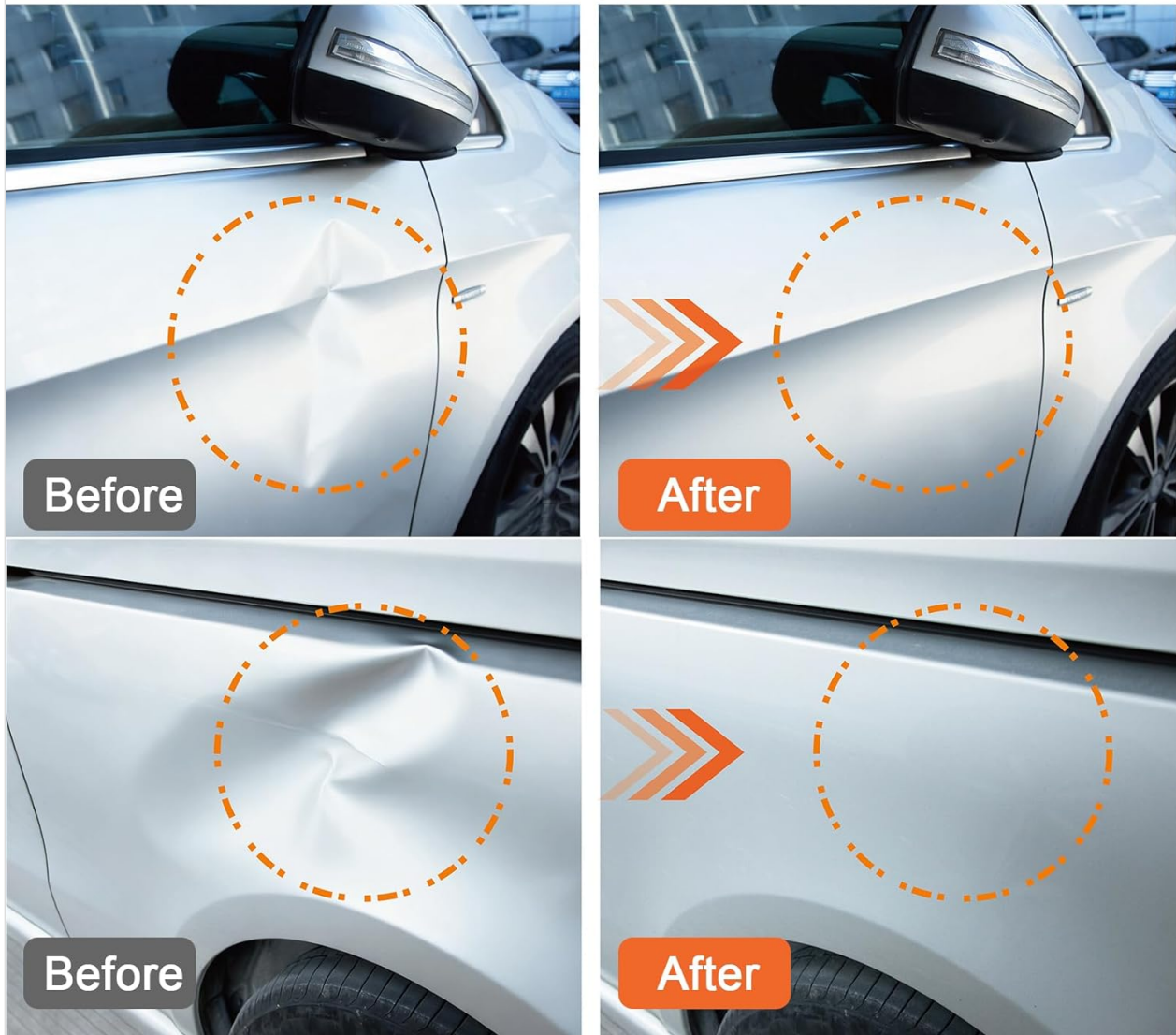


Image: Guide to repair zones on a vehicle, indicating areas that are easy, difficult, or irreversible for dent repair.

8. MAINTENANCE

- After each use, clean the suction cups with a damp cloth to remove any residue.
- Store the dent pullers in a clean, dry place away from direct sunlight and extreme temperatures.
- Inspect the rubber suction cups periodically for cracks or damage. Replace if necessary to maintain effective suction.

9. TROUBLESHOOTING

- **Weak Suction:** Ensure the surface is perfectly clean, dry, and smooth. Re-press the suction cup firmly to expel all air. Check for any debris under the cup.
- **Dent Not Coming Out:** Ensure the material was adequately softened with hot water. Try pulling from different angles. For very deep dents, multiple applications may be needed. Confirm the dent is larger than the suction cup.
- **Tool Slips:** The surface might be wet, oily, or textured. Clean and dry the surface thoroughly. Ensure the

suction cup is fully engaged.

10. SPECIFICATIONS

Attribute	Specification
Brand	CRAFTZONE
Model	CZ6011A
Material	Aluminum (main puller)
Item Weight	739 g
Package Dimensions	15.6 x 14.91 x 14.71 cm
Manufacturer	Uni-Hosen

11. WARRANTY AND SUPPORT

CRAFTZONE products are manufactured to high-quality standards. For information regarding warranty coverage or technical support, please refer to the product packaging or contact your retailer. Keep your purchase receipt as proof of purchase.

12. OFFICIAL PRODUCT VIDEOS

No official product videos from the seller were found for this item.