

SWOFY SF-D08-W

SWOFY D08 160GB MP3 Player User Manual

Model: SF-D08-W

1. PRODUCT OVERVIEW

The SWOFY D08 is a versatile 160GB MP3/MP4 player designed for a comprehensive audio and video experience. Featuring Android 13 OS, a 4-inch HD touchscreen, and extensive connectivity options, it serves as a portable entertainment hub.



Image: The SWOFY D08 MP3 Player showcasing its Android 13 operating system interface.

2. WHAT'S IN THE BOX

Upon unboxing your SWOFY D08 MP3 Player, ensure all the following components are present:

- 1x SWOFY D08 160GB MP3 Player
- 1x Wired Earbuds
- 1x USB Type-C Cable
- 1x User Manual
- 1x 128GB MicroSD Card (pre-installed or separate)

What you will get

- 1x MP3 player
- 1x 128GB TF card
- 1x Type-c charging cable
- 1x Wired Earphones
- 1x Protective Case
- 1x User Manual



Image: All items included in the SWOFY D08 MP3 Player package.

Unboxing and Initial Setup Video

Your browser does not support the video tag.

Video: A detailed unboxing and initial setup guide for the MP3 player, demonstrating how to power on the device, connect to Wi-Fi, and navigate initial Google services setup. It also shows how to connect the device to a laptop for charging and accessing YouTube, and how to use the included wired headphones.

3. DEVICE LAYOUT

Familiarize yourself with the physical components and controls of your SWOFY D08 MP3 Player.

Front View

Powerful Performance Massive Storage



Android 13.0 OS



3GB RAM



32GB ROM



128GB SD card



up to
1TB SD slot

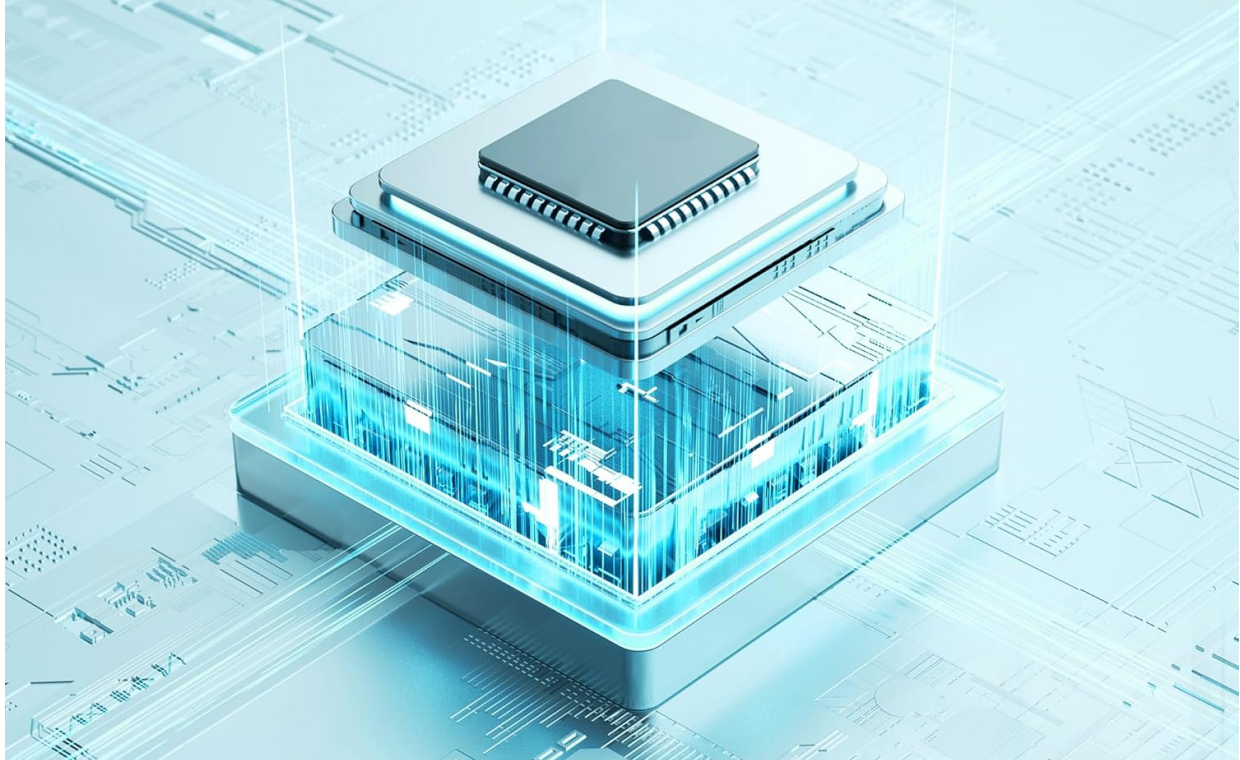


Image: The front of the SWOFY D08 MP3 Player, highlighting the touchscreen display.

Side View (Controls)

2000mAh Long Battery Life



Image: The MP3 player connected to a USB-C charging cable.

4.3 Wi-Fi Connection

To access online features and app downloads, connect your device to a Wi-Fi network:

1. Go to Settings.
2. Select 'Network & Internet'.
3. Tap 'Wi-Fi' and turn it on.
4. Select your desired network and enter the password if prompted.

4.4 Installing the MicroSD Card

The device comes with a 128GB MicroSD card for expanded storage. Locate the MicroSD card slot on the side of the player and gently insert the card until it clicks into place.

5. OPERATING INSTRUCTIONS

5.1 Navigating the Interface

The SWOFY D08 runs on Android 13, offering a familiar and intuitive touchscreen interface. Swipe to navigate between screens, tap icons to open applications, and use the navigation bar at the bottom for Home, Back, and Recent Apps functions.

HiFi Lossless Sound Quality

Support Multiple Formats:

MP3

WAV

FLAC

AAC

WMA

APE



Image: The main application screen of the MP3 player.

5.2 Music Playback

The dedicated music app allows you to manage and play your audio files. You can create playlists, sort songs by artist, album, or genre, and set sleep timers.

- Supported formats: MP3, FLAC, WAV, AAC, APE.
- Offline playback is supported for downloaded content.

Enhanced **Bluetooth** wider, stabler compatibility

Built-in **2.4G/5G** dual-band WiFi for stable connection. Bluetooth pairs quickly with headphones, speakers and car stereos.



Image: Music playback interface on the SWOFY D08.

5.3 Video Playback

Enjoy 1080p HD video playback on the 4-inch touchscreen. The device supports various video formats.

- Supported formats: MKV, MP4, and more.



Image: Video playback on the SWOFY D08.

5.4 Bluetooth Connectivity

Pair your MP3 player with Bluetooth 5.0 compatible devices for wireless audio.

1. Go to Settings.
2. Select 'Connected devices'.
3. Tap 'Bluetooth' and turn it on.
4. Select 'Pair new device' and choose your desired device from the list.



Image: Bluetooth 5.0 connectivity options for the SWOFY D08.

5.5 Parental Control Function

The device includes parental control features, allowing you to manage app access and usage time for children.

Parental Control Function

MP3 player is equipped with parental control feature, allowing children to download apps only with parental authorization.

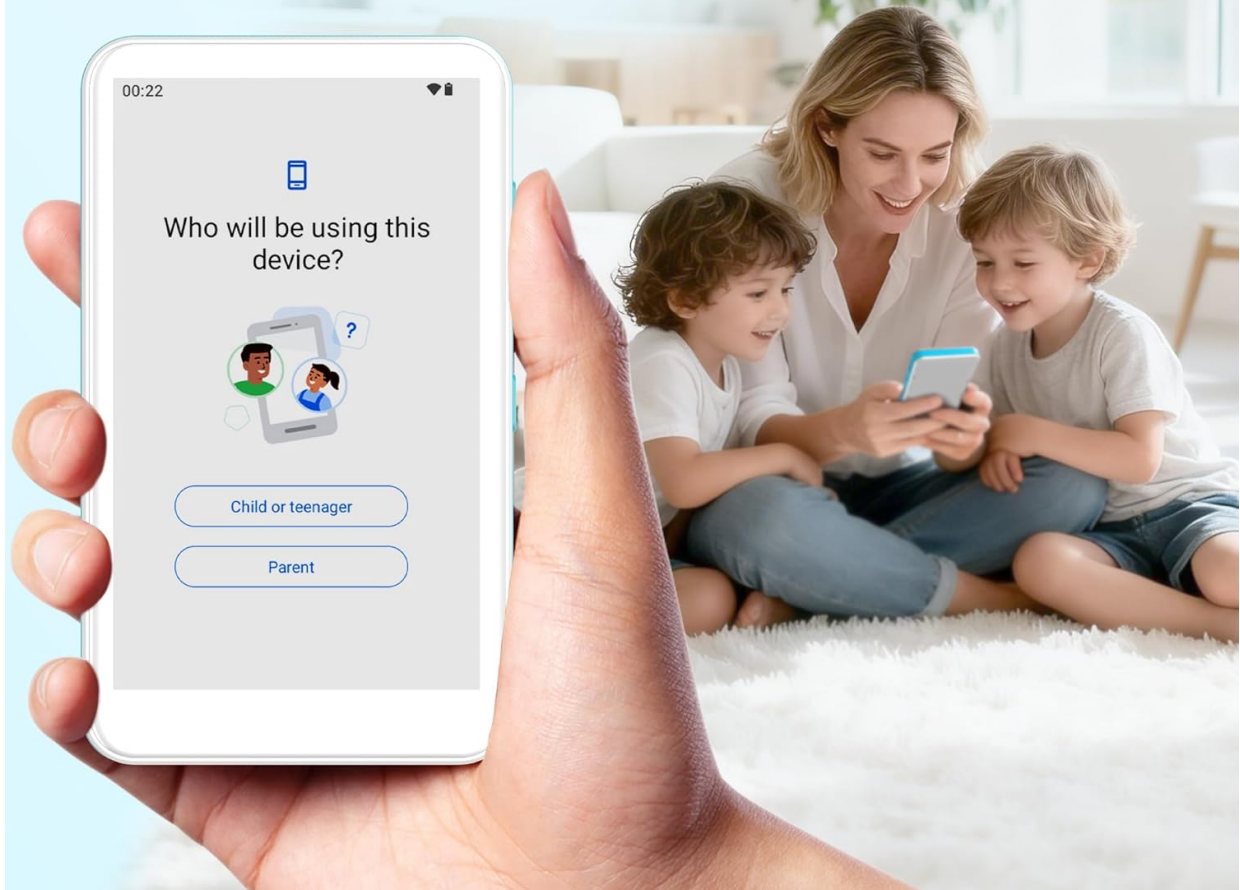


Image: Parental control setup screen on the SWOFY D08.

6. MAINTENANCE

- Keep the device dry and away from extreme temperatures.
- Clean the screen with a soft, lint-free cloth. Avoid abrasive materials.
- Avoid dropping the device or subjecting it to strong impacts.
- Regularly back up important data to prevent loss.

7. TROUBLESHOOTING

7.1 Device Not Turning On

- Ensure the device is sufficiently charged. Connect it to a power source for at least 30 minutes.
- Try performing a soft reset by holding the power button for 10-15 seconds.

7.2 Unable to Connect to Wi-Fi

- Verify that your Wi-Fi router is working correctly and within range.
- Double-check the Wi-Fi password.

- Restart both the MP3 player and your Wi-Fi router.

7.3 Audio Playback Issues

- Check the volume settings on the device and any connected headphones/speakers.
- Ensure the audio file format is supported (MP3, FLAC, WAV, AAC, APE).
- If using wired headphones, ensure they are fully plugged into the 3.5mm audio jack.
- If using Bluetooth, ensure the device is correctly paired and within range of the Bluetooth accessory.

8. SPECIFICATIONS

Feature	Description
Brand	SWOFY
Model Name	SF-D08-W
Operating System	Android 13
Processor	8-core 2.0GHz
RAM	3GB
Internal Storage	32GB
Expandable Storage	128GB MicroSD card included, supports up to 1TB external MicroSD cards
Connectivity	Bluetooth 5.0, Dual-Band Wi-Fi, USB 2.0 (Type-C)
Screen Size	4 Inches
Display Technology	LCD, 1080p HD Playback Support
Audio Formats	MP3, FLAC, WAV, AAC, APE
Video Formats	MKV, MP4, and more
Battery Capacity	2000mAh
Battery Life (Music)	Up to 35 hours
Battery Life (Video)	Up to 10 hours (1080p)
Special Features	Built-In Speaker, Equalizer, FM Radio, Touch Screen, Video Playback, Voice Recorder, E-book Reader, Parental Control

9. WARRANTY AND SUPPORT

9.1 Warranty Information

The SWOFY D08 MP3 Player comes with a 1-Year Warranty from the date of purchase. This warranty covers manufacturing defects and malfunctions under normal use. Please retain your proof of purchase for warranty claims.

9.2 Customer Support

For technical assistance, troubleshooting, or warranty inquiries, please refer to the contact information provided in your included User Manual or visit the official SWOFY support website.