



[Manuals.plus](#) /

› [Blue Wave](#) /

› Blue Wave San Pedro NB7029 24-ft Round 52-in Deep Hard Sided Steel Wall Above Ground Pool Instruction Manual

Blue Wave NB7029

Blue Wave San Pedro NB7029 24-ft Round 52-in Deep Hard Sided Steel Wall Above Ground Pool Instruction Manual

Model: NB7029

1. INTRODUCTION

This manual provides essential instructions for the safe and proper installation, operation, and maintenance of your Blue Wave San Pedro 24-ft Round 52-in Deep Hard Sided Steel Wall Above Ground Pool. Please read all instructions carefully before beginning assembly and retain this manual for future reference. Proper installation and maintenance are crucial for the longevity and safe use of your pool.



Image 1.1: The Blue Wave San Pedro 24-ft Round Above Ground Pool, showcasing its design and size in a backyard setting. This pool is designed for family recreation.

2. SAFETY INFORMATION

WARNING: Failure to follow these safety instructions can result in serious injury or death.

- **Adult Supervision:** Always provide active adult supervision to prevent drowning, especially for children.
- **No Diving or Jumping:** This is an above-ground pool. Its depth is not suitable for diving or jumping. Serious injury, paralysis, or death can occur.
- **Fencing and Barriers:** Install appropriate fencing or barriers around the pool to prevent unsupervised access by children and pets. Check local regulations for specific requirements.
- **Electrical Safety:** Ensure all electrical equipment (pumps, filters, lighting) is installed by a qualified electrician and complies with local codes. Use Ground Fault Circuit Interrupters (GFCIs).
- **Chemical Handling:** Handle pool chemicals according to manufacturer instructions. Store chemicals in a secure, dry place away from children and pets. Never mix different chemicals.
- **Emergency Equipment:** Keep rescue equipment (e.g., life ring, shepherd's hook) readily accessible near the pool.

- **First Aid:** Have a first aid kit available and know how to perform CPR.
- **Clear Deck Area:** Keep the pool deck and surrounding area clear of toys, furniture, and other obstructions to prevent tripping hazards.

3. PACKAGE CONTENTS

The Blue Wave San Pedro pool package includes the following components:

- Steel Pool Structure Components (walls, uprights, top seats, resin top caps)
- Standard-Gauge Blue Overlap Vinyl Liner
- Widemouth Leaf Skimmer
- Instruction Manual

Note: Additional accessories such as the pool pump, sand filter system, and ladder are **sold separately** and are required for full operation.

YOUR PARTNER IN BACKYARD RECREATION

For over 33 years, Blue Wave® has been dedicated to engineering high-quality, durable pools that bring families together.
Trust our expertise to build your lasting backyard retreat



Over **33 Years**
of Expertise



Commitment to
Structural Excellence



Transforming Backyards
into Family Retreats



Image 3.1: Visual representation of components included in the pool kit (widemouth skimmer, overlap liner) and items typically sold separately (pump, sand filter, A-frame ladder).

4. SITE PREPARATION

Proper site preparation is critical for the stability, safety, and longevity of your above-ground pool.

- **Level Ground:** The pool must be installed on a perfectly level, firm, and properly prepared ground surface. Uneven ground can cause structural stress, liner damage, and potential collapse.
- **Clear Area:** Choose a location free from overhead power lines, underground pipes, and tree roots. Ensure adequate clearance around the pool for maintenance and safety.
- **Drainage:** Select a site with good drainage to prevent water accumulation around the pool base.
- **Sunlight:** Consider sunlight exposure for water warming and reduced chemical use.
- **Foundation:** Prepare a solid foundation. This may involve removing sod, leveling the soil, and adding a layer of sand or crushed stone for cushioning and stability.

5. ASSEMBLY AND SETUP INSTRUCTIONS

Assembly of the Blue Wave San Pedro pool typically takes one to two days with two to three helpers. Professional installation is recommended.

1. **Unpack and Organize:** Carefully unpack all components and verify against the package contents list. Organize parts for easy access.
2. **Bottom Track Assembly:** Assemble the bottom track system on your prepared, level site according to the detailed diagrams in the full assembly guide.
3. **Wall Installation:** Erect the galvanized steel wall into the bottom track. The wall features a triple-layer rust resistance system: a hot-dip galvanized steel core, a zinc-aluminum coating, and a protective enamel top coat for multi-season durability. Secure the wall ends as instructed.

ENGINEERED FOR LASTING STRENGTH

Reinforced **6-inch top seats** and **heavy-duty 5-inch steel uprights** help maintain frame alignment and provide reliable stability for **years of backyard enjoyment.**



Image 5.1: Cross-section diagram detailing the three layers of rust and corrosion defense in the pool's steel wall construction.

- Upright and Top Seat Installation:** Install the 5-inch steel verticals and 6-inch steel top seats. These components are engineered for lasting strength and help maintain frame alignment and provide reliable stability. Secure the resin top caps over the structural joints.

YOUR BACKYARD FAMILY OASIS AWAITS

With a massive **12,600-gallon capacity**, the **24-ft round design** provides ample space for family fun, summer parties, and years of memories.



Image 5.2: Detail showing the reinforced 6-inch top seats and 5-inch steel verticals, crucial for the pool's structural integrity.

5. **Liner Installation:** Carefully install the standard-gauge blue overlap vinyl liner. Ensure it is centered and smooth, with no wrinkles. Begin filling the pool slowly, smoothing out any remaining wrinkles as the water level rises.
6. **Skimmer Installation:** Install the widemouth leaf skimmer according to the instructions provided with the skimmer unit.
7. **Connect Filtration System:** Once the pool is filled to the appropriate level, connect your separately purchased pump and filter system. Follow the manufacturer's instructions for these components.
8. **Install Ladder:** Securely install your pool ladder according to its manufacturer's instructions.

6. OPERATING INSTRUCTIONS

- **Initial Fill:** Fill the pool to the recommended water level, typically halfway up the skimmer opening.
- **Water Chemistry:** Test the water chemistry daily or as needed. Maintain proper pH, alkalinity, and sanitizer levels (e.g., chlorine) to ensure safe and clean swimming conditions. Consult a pool chemical guide for specific ranges.
- **Filtration:** Operate your pump and filter system for at least 8-12 hours daily to ensure proper water circulation and filtration.

- **Skimming:** Use the widemouth skimmer to remove leaves and debris from the water surface regularly.

7. MAINTENANCE

- **Regular Cleaning:** Vacuum the pool floor and brush the walls weekly to prevent algae growth and remove debris.
- **Filter Maintenance:** Backwash or clean your filter according to its manufacturer's instructions to maintain optimal filtration performance.
- **Liner Inspection:** Periodically inspect the vinyl liner for any tears, punctures, or signs of wear. Address minor repairs promptly to prevent larger issues. The overlap liner design allows for easy replacement when needed.
- **Structure Inspection:** Annually inspect the steel wall, uprights, and top seats for any signs of rust, corrosion, or damage.
- **Winterization (Cold Climates):** In cold climates, proper winterization is essential. This typically involves lowering the water level, draining equipment, adding winterizing chemicals, and installing a winter cover. Consult a local pool professional for specific winterization procedures for your region.

8. TROUBLESHOOTING

This section addresses common issues you might encounter with your above-ground pool.

Problem	Possible Cause	Solution
Cloudy Water	Poor filtration, improper chemical balance, high organic load	Check filter, adjust water chemistry (pH, sanitizer), shock treat the pool, run filter longer.
Algae Growth	Low sanitizer levels, poor circulation	Brush walls, shock treat with algaecide, ensure proper filtration.
Water Level Drop	Evaporation, leak in liner or plumbing	Monitor evaporation; if excessive, inspect liner and plumbing for leaks. Contact a professional if a leak is suspected.
Pump Not Priming	Air leak, low water level, clogged skimmer/strainer	Check water level, inspect for air leaks in plumbing, clean skimmer basket and pump strainer.

9. SPECIFICATIONS

- **Model Number:** NB7029
- **Shape:** Round
- **Dimensions:** 24-ft Diameter (288 inches L x 288 inches W), 52-inch Wall Height
- **Capacity:** Approximately 12,600 Gallons
- **Material:** Galvanized Steel (wall), Vinyl (liner)
- **Wall Construction:** Hard-sided steel wall with triple-layer rust and corrosion defense (Hot-Dip Galvanized Steel Core, Zinc Aluminum Coating, Protective Enamel Top Coat)
- **Top Seats:** 6-inch Steel

- **Verticals:** 5-inch Steel
- **Included Components:** Pool structure, vinyl liner, widemouth skimmer
- **Required Assembly:** Yes
- **Indoor/Outdoor Usage:** Outdoor

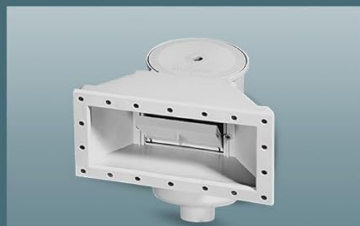
10. WARRANTY AND SUPPORT

Your Blue Wave San Pedro Above Ground Pool structure is backed by a **15-year limited warranty**. This warranty covers defects in materials and workmanship of the pool structure under normal use and service, when properly installed and maintained.

PLAN YOUR PERFECT POOL SETUP

This package includes the complete pool structure and blue overlap liner. **Choose your own pump, filter, and accessories to customize your system.**

Included In This Kit



Widemouth Skimmer



Overlap Liner

Sold Separately



A-Frame Ladder



1.0 HP Pump and Sand Filter

Professional Installation Recommended

Image 10.1: Visual representation of the 15-year limited warranty, highlighting Blue Wave's industry experience and commitment to quality.

For warranty claims, technical support, or to purchase replacement parts, please contact Blue Wave customer service. Refer to the contact information provided on the Blue Wave website or your purchase documentation. **Blue Wave Products** has over 33 years of experience in the pool industry, ensuring dependable support for your product.

