

Manuals+

[Q & A](#) | [Deep Search](#) | [Upload](#)

Manuals.plus /

> [AECOJOY](#) /

> AECOJOY Outdoor Storage Shed Model SS162350318 Instruction Manual

AECOJOY SS162350318

AECOJOY Outdoor Storage Shed Instruction Manual

MODEL: SS162350318

1. Introduction

This manual provides detailed instructions for the assembly, operation, and maintenance of your AECOJOY Outdoor Storage Shed, Model SS162350318. This versatile unit is designed for outdoor storage of items such as trash cans, bicycles, and garden equipment, offering protection from weather elements. Please read all instructions carefully before proceeding with assembly or use.



Figure 1: AECOJOY Outdoor Storage Shed (Closed)

2. Safety Information

- Read and understand all instructions before assembly and use.
- Wear appropriate personal protective equipment, such as gloves and eye protection, during assembly.
- Ensure the shed is assembled on a level, stable, and firm surface to prevent tipping or structural instability.
- Do not overload the shed beyond its intended capacity.
- Keep children and pets away from the assembly area to prevent injury.
- Periodically check all fasteners for tightness and re-tighten as necessary.

3. Package Contents

Before beginning assembly, carefully unpack all components and compare them against the packing list provided with your product. If any parts are missing or damaged, do not proceed with assembly. Contact AECOJOY customer support immediately for assistance.

Typical components include:

- Metal panels (walls, roof, doors)
- Frame components (base, supports)
- Hardware (screws, nuts, washers, bolts)
- Hydraulic pistons for lid operation
- Lid hooks for trash cans
- Door handles and latches

4. Setup and Assembly

The AECOJOY Outdoor Storage Shed is designed for straightforward assembly. Follow the included step-by-step guide for proper construction. It is recommended to have at least two people for assembly.

1. **Site Preparation:** Choose a level and stable location for the shed. Clear any debris or obstacles. A concrete slab or treated wood foundation is recommended.
2. **Base Assembly:** Assemble the base frame according to the diagrams in your separate assembly guide. Ensure all connections are secure and square.
3. **Wall Panel Installation:** Attach the side and back panels to the base frame. Ensure panels are correctly oriented and all fasteners are tightened.
4. **Door Assembly:** Install the double doors onto the front frame. Ensure they swing freely and align correctly. Attach the lockable latches and handles.
5. **Roof Assembly:** Install the roof panels. Attach the hydraulic pistons and lid hooks for the upward-opening lid mechanism. Ensure the lid operates correctly and smoothly.
6. **Final Checks:** Verify all screws and bolts are tightened. Test all moving parts, including the lid and doors, for smooth operation.

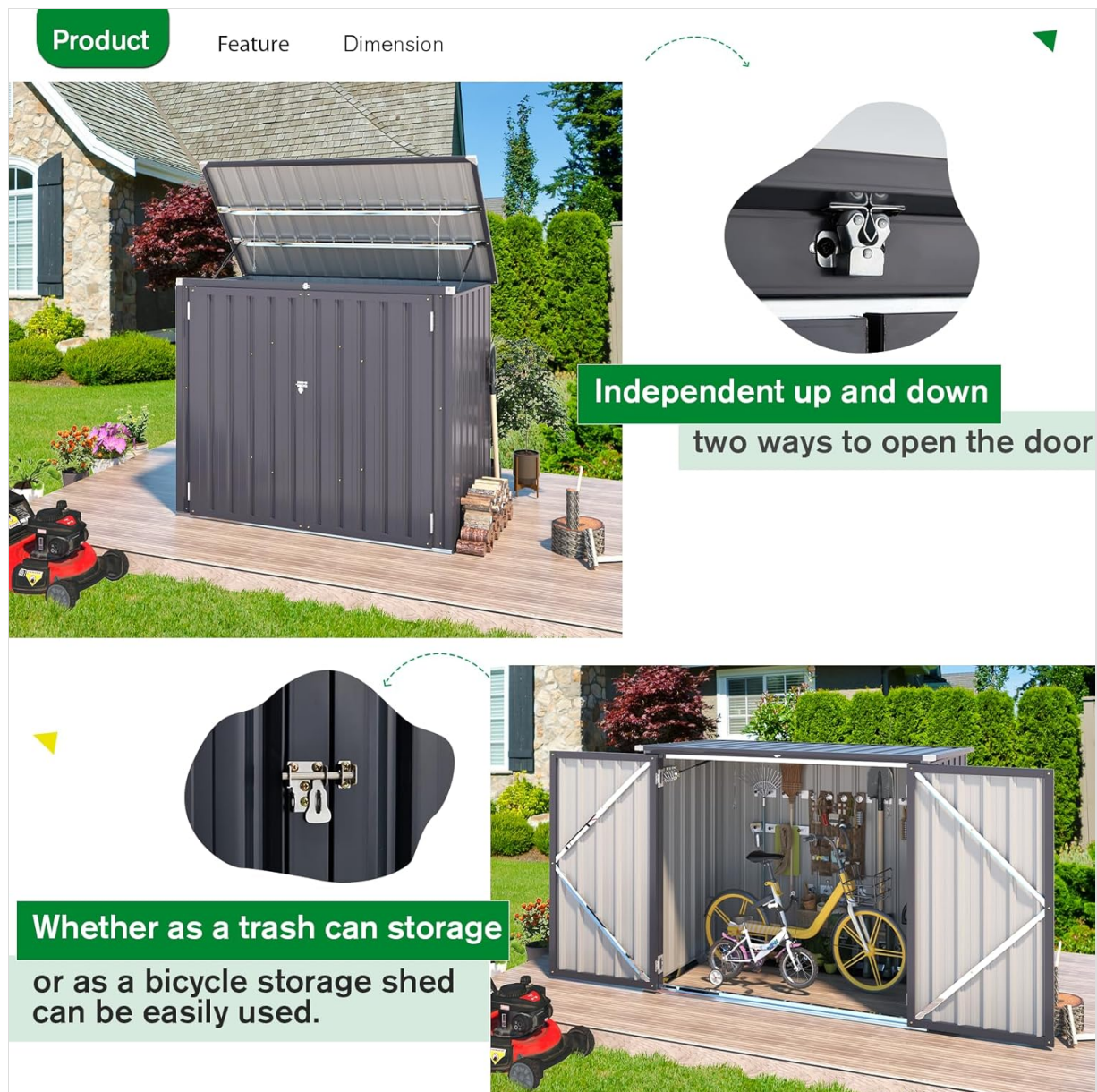


Figure 2: Shed door mechanism and interior capacity

5. Operating Instructions

The AECOJOY Outdoor Storage Shed offers two primary methods for access: the top-opening lid and the front double doors.

- **Opening the Lid:** Gently lift the lid from the front. The hydraulic pistons will assist in opening and holding the lid in the open position. To close, gently pull the lid down until it latches securely.
- **Using Lid Hooks (for Trash Cans):** For trash can storage, attach the independent lid hooks from the shed's lid to the handles or lids of your trash cans. This allows the trash can lids to open simultaneously with the shed's lid for convenient disposal.

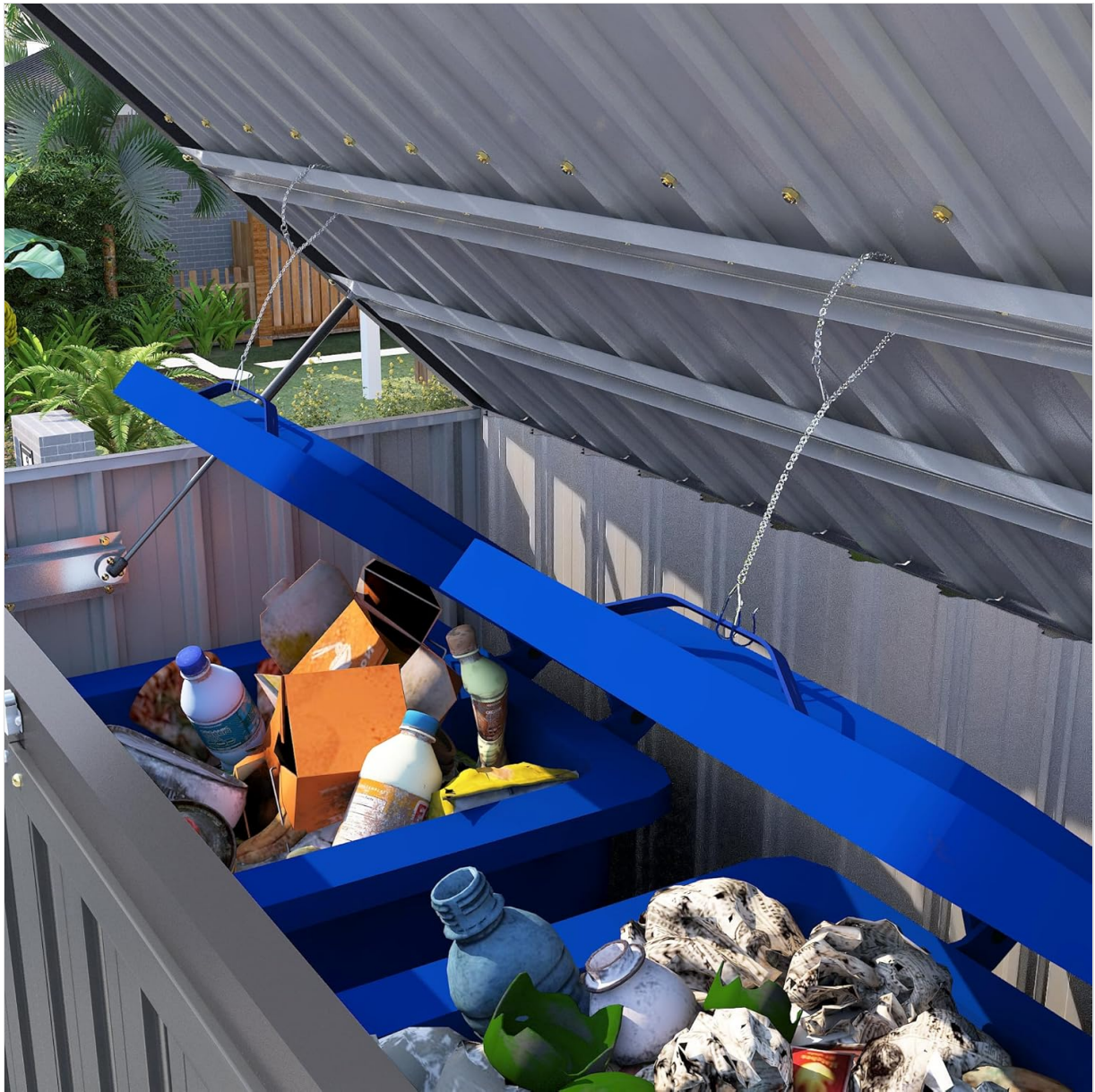


Figure 3: Shed interior with trash cans and lid hooks

- **Opening the Double Doors:** Unlock the front latches and pull the doors open. The doors can open wide to accommodate larger items like bicycles or for easy access to the interior. Ensure doors are securely latched when closed to protect contents from weather and unauthorized access.



Multi-Scene Use :

Can also be used as a bicycle, tool storage shed

Figure 4: Shed interior used for bicycle and tool storage

6. Maintenance

To ensure the longevity and optimal performance of your AECOJOY Outdoor Storage Shed, regular maintenance is recommended.

- **Cleaning:** Clean the exterior surfaces periodically with a mild soap and water solution. Rinse thoroughly with clean water and dry to prevent water spots and mineral buildup. Avoid abrasive cleaners, harsh chemicals, or steel wool, as these can damage the finish.
- **Hardware Check:** Annually inspect all screws, bolts, and latches for tightness. Re-tighten any loose fasteners to maintain structural integrity and security.
- **Rust Prevention:** The shed features rust-resistant metal panels. However, in coastal or high-humidity environments, occasional inspection for signs of rust and application of a rust-inhibiting spray may be beneficial to prolong the life of the shed.
- **Hydraulic Pistons:** Ensure the hydraulic pistons operate smoothly. If they become stiff or noisy, clean them and apply a silicone-based lubricant to the piston rod.

7. Troubleshooting

This section addresses common issues you might encounter with your AECOJOY Outdoor Storage Shed.

- **Issue: Doors do not close or latch properly.**

Solution: Check if the shed is on a level surface. Uneven ground can cause misalignment. Adjust the shed's position or shim the base as needed. Inspect hinges and latches for obstructions or damage.

- **Issue: Lid is difficult to open or close.**

Solution: Verify that the hydraulic pistons are installed correctly and are free of debris. Clean and lubricate the pistons if necessary. Ensure nothing is obstructing the lid's movement.

- **Issue: Water leakage inside the shed.**

Solution: Check the roof panels and seams for proper installation and sealing. Ensure the sloping roof design is clear of debris that could impede water runoff. Verify all panels are securely fastened.

- **Issue: Shed feels unstable.**

Solution: Re-check all assembly fasteners for tightness. Ensure the shed is placed on a firm, level foundation. Consider anchoring the shed to the ground for added stability, especially in windy conditions (anchoring hardware not included).

8. Specifications

The following are the technical specifications for the AECOJOY Outdoor Storage Shed, Model SS162350318.

Specification	Detail
Brand	AECOJOY
Model Number	SS162350318
Material	Metal (Rust-resistant)
Product Dimensions (D x W x H)	31.5" x 59.3" x 42.9"
Item Weight	154 Pounds
Storage Capacity	46 Cubic Feet (16 Square Feet footprint)
Color	Gray

Product

Feature

Dimension

Product Dimension

Rainproof, Windproof, Strong and Reliable
Custom-made for **2 x 64-gallon** Trash Cans

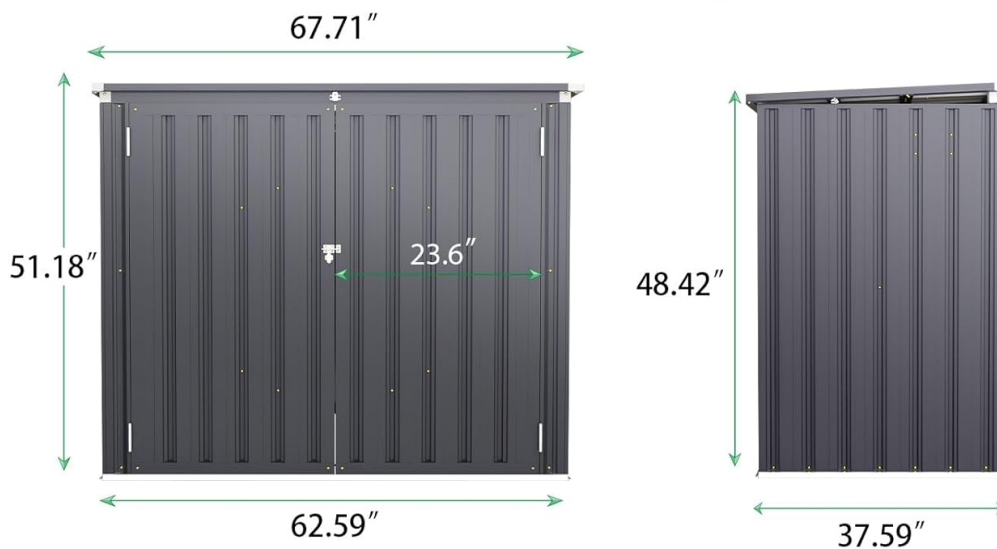


Figure 5: Product Dimensions

9. Warranty and Support

Warranty Information: This AECOJOY Outdoor Storage Shed is covered by a 1-year limited warranty from the date of purchase. This warranty covers manufacturing defects and material flaws under normal use. Please retain your proof of purchase for warranty claims.

Customer Support: For any questions, assistance with assembly, troubleshooting, or warranty claims, please contact our customer service team. We offer lifetime 24/7 customer-oriented service to ensure your satisfaction.

Contact Information: Refer to your purchase documentation or the AECOJOY official website for the most current contact details and support options.