

[Manuals.plus](#) /

> [Jasion](#) /

> Jasion EB5 Electric Bike Instruction Manual

Jasion EB5

Jasion EB5 Electric Bike User Manual

Model: EB5

INTRODUCTION

Thank you for choosing the Jasion EB5 Electric Bike. This manual provides essential information for the safe assembly, operation, and maintenance of your new e-bike. Please read it thoroughly before your first ride and keep it for future reference. Proper use and maintenance will ensure optimal performance and longevity of your Jasion EB5.



Image: The Jasion EB5 Electric Bike, showcasing its sleek black frame, 26-inch wheels, and integrated battery.

SAFETY INFORMATION

Always wear a helmet and appropriate safety gear when riding. Ensure all components are securely fastened before each ride. Familiarize yourself with local traffic laws and regulations for electric bikes. Do not ride under the influence of alcohol or drugs. Regular maintenance is crucial for safe operation.

Safety Comes First

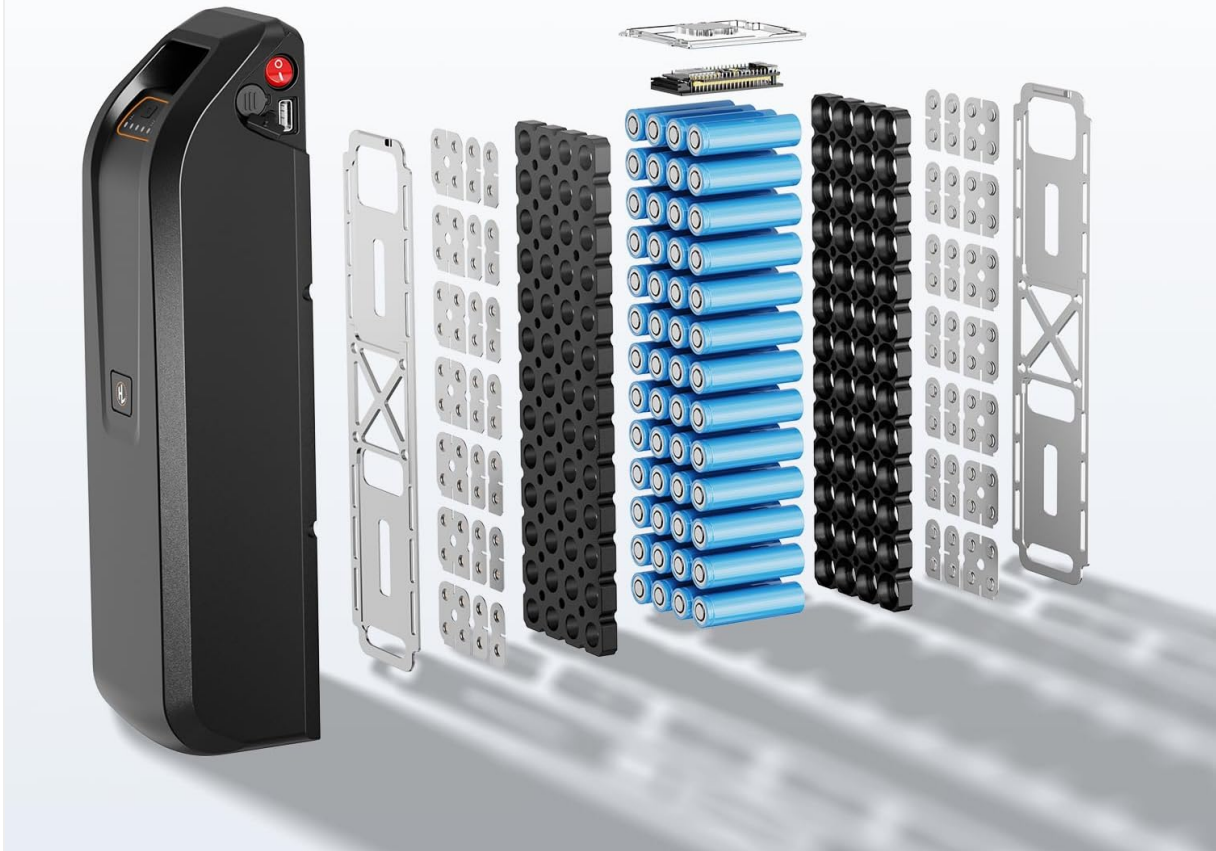


Image: An exploded view of the Jasion EB5 battery, highlighting its USB charge port, BMS protection, UL certificate, and up to 40 miles max range, emphasizing safety features.

SETUP

Unboxing and Initial Assembly

Your Jasion EB5 Electric Bike comes partially assembled. Carefully remove all packaging materials and inspect the bike for any damage. The main components requiring assembly are typically the front wheel, handlebars, pedals, and seat post.



Image: The Jasion EB5 Electric Bike packaged in its shipping box, indicating it is ready for unboxing and assembly.

Battery Installation and Charging

The Jasion EB5 features a removable 360Wh battery. To install, slide the battery into its designated slot on the frame until it clicks securely. Use the provided key to lock it in place. For charging, connect the charger to the battery port and then to a power outlet. The battery indicator lights will show the charging status. A full charge typically takes 5-6 hours.

Your browser does not support the video tag.

Video: This video demonstrates the process of installing and removing the battery from the Jasion EB5 Electric Bike, as well as connecting it to the charger. It shows the battery indicator lights and how to secure the battery with a key.

OPERATING INSTRUCTIONS

Power On/Off and Display Functions

To power on the bike, press and hold the power button on the LCD display. The display will illuminate, showing your speed, battery level, PAS mode, and mileage. Use the '+' and '-' buttons to adjust the Pedal Assist System (PAS) level. To power off, press and hold the power button again.

Upgraded Ergonomic Design

20 MPH



IPX4



4" Display



3+1
working modes



Antislip

Image: The Jasion EB5's upgraded ergonomic LCD display, showing speed (20.8 MPH), PAS level (3), and battery status. It also highlights IPX4 water resistance, 3+1 working modes, and anti-slip features.

Riding Modes

The Jasion EB5 offers four working modes:

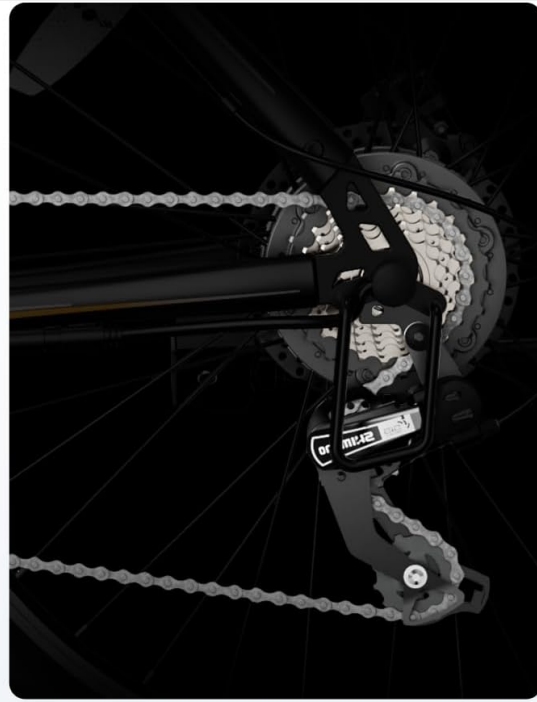
- **PAS Mode:** Provides a moderate amount of power as you pedal. Adjustable from 1-3 levels to suit your needs.
- **Pure Electric Mode:** Twist the throttle for power without pedaling.
- **Pedal Mode:** Ride as an ordinary bicycle without electric assistance.
- **Booster Mode:** Assists in pushing the bike uphill at 4.5-7.5 km/h, reducing effort.



Image: An illustration of the Jasion EB5's 1000W peak brushless motor, emphasizing its power, 1-second power-up, and ability to handle 15-degree inclines.

Gear Shifting and Braking

The bike is equipped with 7-speed gears. Use the twist grip shifter on the handlebars to change gears according to terrain and desired speed. The Jasion EB5 features front and rear mechanical disc brakes for reliable stopping power. Squeeze both brake levers simultaneously for effective braking.



Power up your Trip



44T Chainring
Flat Road Faster



14-28T Gear
Better climbing Ability



AI Sensor
Pedaling Effortless

Image: Close-up of the Jasion EB5's 44T chainring and 14-28T gear system, highlighting the AI sensor for effortless pedaling and better climbing ability.

MAINTENANCE

Battery Care

To prolong battery life, avoid fully discharging it regularly. Charge the battery after each ride, or at least once a month if not in use. Store the battery in a cool, dry place away from direct sunlight and extreme temperatures.

Tire Pressure

Regularly check tire pressure to ensure it matches the recommended PSI indicated on the tire sidewall. Proper tire pressure improves ride comfort, efficiency, and reduces the risk of punctures.

Brake Adjustment

Periodically inspect brake pads for wear and ensure brake levers provide firm and responsive stopping. If brakes feel loose or unresponsive, they may need adjustment or pad replacement. Consult a professional bike mechanic if unsure.

General Cleaning

Clean your e-bike regularly with a damp cloth and mild soap. Avoid using high-pressure washers directly on electrical components. Lubricate the chain periodically to ensure smooth operation.



Conquer Bumps & Dark

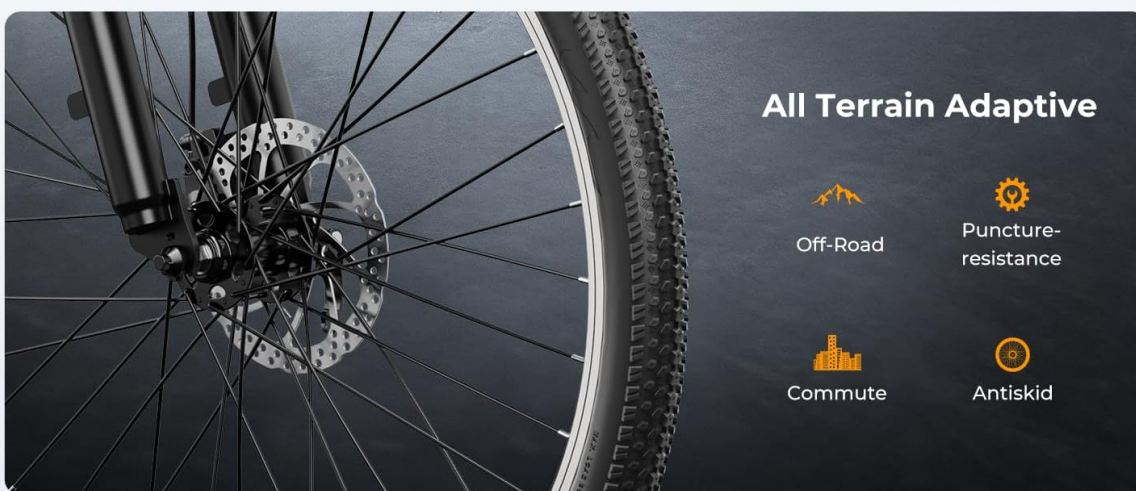


Image: Close-up of the Jasion EB5's front fork suspension with 100mm travel and a 3W built-in headlight, designed to conquer bumps and provide visibility in the dark.

TROUBLESHOOTING

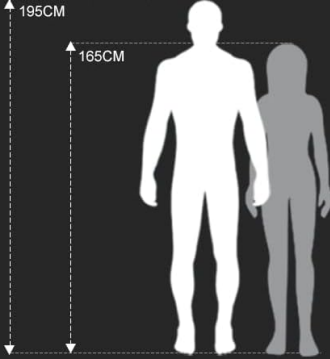
Common Issues




- **Bike not powering on:** Check if the battery is fully charged and properly installed. Ensure the power button on the display is pressed correctly.
- **Motor not assisting:** Verify the PAS level is not set to 0. Check for any error codes on the display. Ensure all electrical connections are secure.
- **Brakes squeaking or ineffective:** Inspect brake pads for wear. Adjust brake cable tension if necessary. Clean brake rotors if dirty.
- **Unusual noises:** Check for loose components, especially around the wheels, chain, and motor. Lubricate the chain if it sounds dry.

For persistent issues not covered here, please refer to the detailed troubleshooting section in the full manual or contact customer support.

SPECIFICATIONS

Feature	Detail
Bike Type	Electric Bike
Motor	1000W Peak Brushless Motor (350W rated)
Battery	360Wh Removable Lithium Battery
Max Speed	20 MPH
Range per Charge	25-40 Miles
Charging Time	5-6 Hours
Wheel Size	26 Inches
Gears	7-Speed
Brakes	Front and Rear Mechanical Disc Brakes
Suspension	Front Fork Suspension (100mm travel)
Frame Material	Carbon Steel
Item Weight	49.6 Pounds
Max Load Capacity	264 Pounds
Minimum User Height	5 Feet

	5'4"-6'4" Recommended height
	49.6LBS Bicycle weight
	MAX 264LBS Load capacity

A. Total length	68"
B. Handlebar height	42.5"
C. wheelbase	42"
D. Minimum seat height	30"
E. Maximum seat height	39"
F. Chain stay length	18"
G. Stand height	30"
H. Top tube length	23"
I. Wheel diameter	25"
J. Head tube length	7"
K. Handlebar length	25"
L. Minimum Seat to Floor	33.5"

Image: Detailed diagram of the Jasion EB5 Electric Bike with key dimensions and specifications, including bicycle weight (49.6 lbs), load capacity (Max 264 lbs), and recommended height (5'4"-6'4").

WARRANTY AND SUPPORT

Warranty Information

The Jasion EB5 Electric Bike comes with a 1-year limited warranty. Please retain your proof of purchase for any warranty claims. The warranty covers manufacturing defects but typically excludes wear and tear, misuse, or accidental damage.

Customer Support

For technical assistance, troubleshooting, or warranty inquiries, please contact Jasion Ebike customer support. Refer to your purchase documentation for specific contact details or visit the official Jasion website.