


EUQQ Q16S

EUQQ Q16S Open Ear Headphones User Manual

Model: Q16S

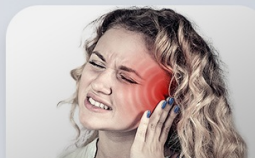
1. INTRODUCTION AND OVERVIEW

Thank you for choosing the EUQQ Q16S Open Ear Headphones. These wireless earbuds feature Bluetooth 5.4 connectivity, an ENC microphone for clear calls, IPX7 sweat resistance, and a lightweight, comfortable open-ear design with adjustable ear hooks. This manual provides detailed instructions for setup, operation, maintenance, and troubleshooting to ensure optimal performance.




In-Ear Headphones

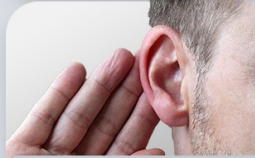
Enjoy Listening in Comfort
All-Day Comfort & Ear Refreshing




Pain



Ear infection



Hearing Loss



Discomfort

The open-ear design prioritizes comfort and situational awareness, reducing ear strain often associated with traditional in-ear models.

50Hrs Play Time With Dual LED Display

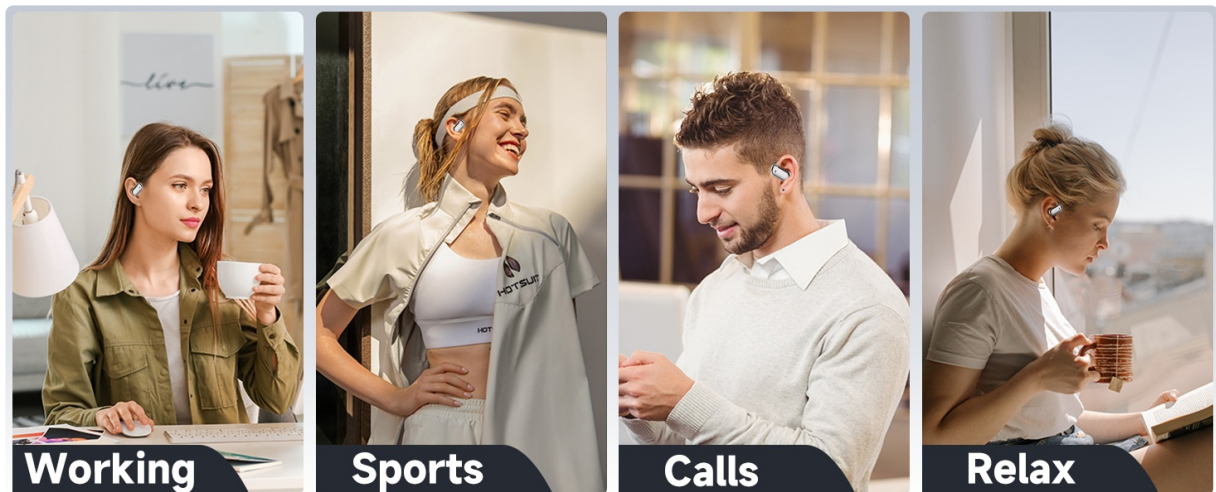


The upgraded hook open-ear design is compact, comfortable, and minimizes the risk of hearing damage by reducing air pressure in the ear canal.

2. PACKAGE CONTENTS

The EUQQ Q16S Open Ear Headphones package includes:

- EUQQ Q16S Open Ear Headphones (Left and Right earbuds)
- Charging Case
- USB Type-C Charging Cable
- User Manual



The package includes the earbuds, charging case, and a Type-C charging cable.

3. CHARGING THE HEADPHONES

Before first use, fully charge the headphones and charging case.

Charging the Earbuds:

- Place the earbuds into the charging case. Ensure they are correctly seated.
- The LED display on the charging case will show the charging status of each earbud.

Charging the Case:

- Connect the USB Type-C charging cable to the charging port on the case and to a power source.
- The LED display on the case will indicate the battery level during charging.
- A full charge for the case takes approximately 1 hour.

The earbuds provide up to 10 hours of playtime on a single charge, and the charging case extends total playtime to approximately 50 hours.

Ultra-Light Design with Skin-Friendly Material

Each earhook is only 7.5g and crafted from premium soft silicone material is surface for complete comfort



The charging case features a dual LED display to show the battery percentage of the case and the charging status of each earbud.

4. WEARING INSTRUCTIONS

Follow these steps for a secure and comfortable fit:

1. Take out the earphones from the charging case.
2. Hang the end of the earphones over your ear bone.
3. Turn the earphones and slide them behind your ear.
4. Adjust the ear hook to ensure a secure and comfortable fit around your ear.



Ergonomically Designed Earhooks

The open bluetooth earphones has a unique shape, without being plugged into the ear canal, conforms to the natural shape of any ear no longer pain your ear because of long time wearing.

Visual guide for wearing the EUQQ Q16S headphones.

Open Air Conduction Headphones Design

Wireless earbuds deliver clear highs and powerful bass to put you right in the action. The open design protects the ear canal from any discomfort and reduces ear fatigue.



The ergonomically designed earhooks conform to the natural shape of the ear for extended comfort.

5. PAIRING WITH A DEVICE

The EUQQ Q16S headphones are designed for easy pairing:

1. Open the charging case. The earbuds will automatically enter pairing mode.
2. On your device (smartphone, tablet, etc.), enable Bluetooth.
3. Search for available Bluetooth devices and select "EUQQ Q16S" from the list.
4. Once connected, you will hear a confirmation prompt, and the earbuds will be ready for use.

The headphones utilize Bluetooth 5.4 technology for a stable and fast connection.

6. OPERATING INSTRUCTIONS (TOUCH CONTROLS)

The EUQQ Q16S headphones feature intuitive touch controls on each earbud. The following table outlines the functions:

Open Air Conduction Headphones Design

Wireless earbuds deliver clear highs and powerful bass to put you right in the action. The open design protects the ear canal from any discomfort and reduces ear fatigue.



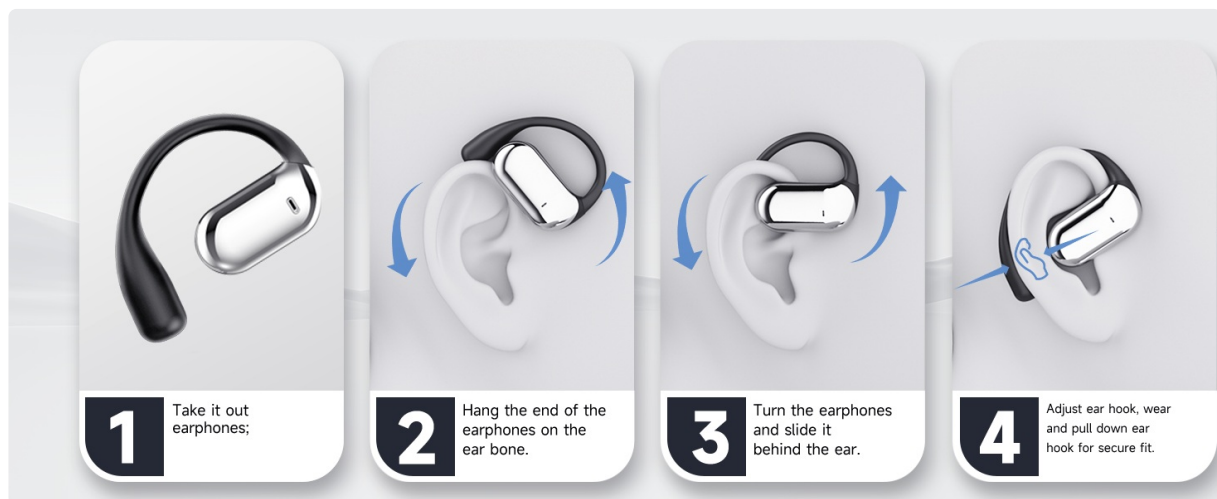
Detailed guide for touch controls on the EUQQ Q16S headphones.

Action	Left Earbud (L)	Right Earbud (R)
Volume +	Double Tap (x2)	
Volume -		Double Tap (x2)

Action	Left Earbud (L)	Right Earbud (R)
Play/Pause	Single Tap (x1)	Single Tap (x1)
Answer Call	Single Tap (x1)	Single Tap (x1)
Previous Song	Long Press (1s)	
Next Song		Long Press (1s)
Reject Call / Hang Up	Triple Tap (x3)	Triple Tap (x3)
Activate Voice Assistant (Siri/Google Assistant)	Triple Tap (x3)	Triple Tap (x3)
Reset Earbuds	Press both earbuds 5 times quickly while disconnected from phone.	

Audio Quality:

The 14.2mm dynamic drivers deliver clear highs and powerful bass, providing an immersive audio experience. The open-ear design allows you to enjoy your music while remaining aware of your surroundings.



The 14.2mm dynamic drivers provide 360-degree HiFi stereo sound with super bass.

7. MAINTENANCE AND CARE

To ensure the longevity and optimal performance of your EUQQ Q16S headphones, follow these care instructions:

- **Cleaning:** Wipe the earbuds and charging case with a soft, dry, lint-free cloth. Do not use abrasive cleaners, solvents, or spray directly onto the product.
- **Water Resistance:** The headphones are IPX7 sweat-resistant, meaning they can withstand sweat and light splashes. Do not submerge them in water or expose them to heavy rain. Ensure the charging port is dry before charging.
- **Storage:** When not in use, store the headphones in their charging case to protect them from dust and damage. Store in a cool, dry place away from extreme temperatures.
- **Battery Care:** To preserve battery life, avoid fully discharging the battery frequently. Charge the headphones regularly, even if not in constant use.

8. TROUBLESHOOTING

If you encounter issues with your EUQQ Q16S headphones, try the following solutions:

No Sound or Intermittent Connection:

- Ensure the earbuds are charged.
- Check that Bluetooth is enabled on your device and the earbuds are paired.
- Move the earbuds closer to your device and away from potential interference sources (e.g., Wi-Fi routers, other Bluetooth devices).
- Try resetting the earbuds (see 'Reset Earbuds' in the touch controls section).

Earbuds Not Charging:

- Ensure the charging cable is securely connected to both the case and the power source.
- Verify that the earbuds are correctly seated in the charging case.
- Clean the charging contacts on both the earbuds and the case with a dry cotton swab.
- Try a different charging cable or power adapter.

One Earbud Not Working:

- Place both earbuds back into the charging case, close the lid, and then take them out again.
- Ensure both earbuds are charged.
- Perform a factory reset of the earbuds.

9. SPECIFICATIONS

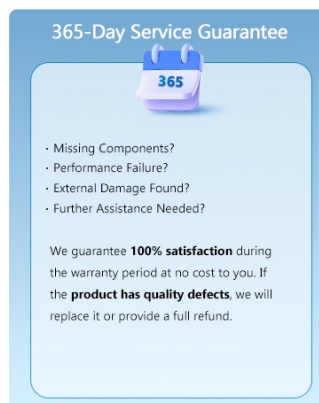
Feature	Detail
Brand	EUQQ
Model Number	Q16S
Color	Grey Black
Ear Placement	Open Ear
Bluetooth Version	5.4
Earbud Playtime	Up to 10 hours (single charge)
Total Playtime (with case)	Up to 50 hours
Charging Time	Approximately 1 hour (for case)
Audio Driver Type	14.2mm Dynamic Driver
Microphone	ENC Noise Canceling Mic
Water Resistance	IPX7 (Sweat Resistant)
Earbud Weight	7.5g (each)

Feature	Detail
Connectivity	Wireless (Bluetooth)

10. WARRANTY INFORMATION

EUQQ provides a 365-day service guarantee for the Q16S Open Ear Headphones. We are committed to 100% satisfaction during the warranty period.

- If the product has quality defects, we will replace it or provide a full refund at no cost to you.
- This warranty covers manufacturing defects and performance failures.
- Please retain your proof of purchase for warranty claims.



EUQQ offers a 365-day service guarantee for quality defects.

11. CUSTOMER SUPPORT

For any questions, concerns, or assistance with your EUQQ Q16S Open Ear Headphones, please contact our dedicated Customer Service Team directly. We are available to help with:

- Product not delivered on time
- Product dissatisfaction
- Problems during use
- Return inquiries
- Issues unresolved by Amazon Customer Service

We strive to provide 24-hour online customer service to address your needs promptly.



Contact EUQQ Customer Service for prompt assistance.

