

[Manuals.plus](#) /

> [FTVOGUE](#) /

> FTVOGUE 12V Liquid Water Level Controller Module Instruction Manual

FTVOGUE FTVOGUEcs8m2u9eo3

FTVOGUE 12V Liquid Water Level Controller Module Instruction Manual

Model: FTVOGUEcs8m2u9eo3

1. INTRODUCTION

This manual provides detailed instructions for the installation, operation, and maintenance of the FTVOGUE 12V Liquid Water Level Controller Module. This module is a PCB board detection sensor designed for automatic pump water level control, suitable for various applications including agricultural irrigation and home usage.

The FTVOGUE 12V Liquid Water Level Controller Module automates water level control for pumps, ensuring efficient management in agricultural and home environments. It utilizes advanced PCB technology for accurate liquid level sensing, minimizing overflow risks and maximizing resource efficiency. Its compact design allows for easy installation in various locations, accommodating both small and large water tanks.

2. SAFETY INFORMATION

Please read and understand all safety instructions before installing or operating this device. Failure to follow these instructions may result in electric shock, fire, or serious injury.

- Ensure the power supply is disconnected before making any electrical connections.
- This module operates on 12V DC. Do not connect it to higher voltage AC power supplies directly.
- All wiring should be performed by a qualified individual or under the supervision of one.
- Keep the module away from moisture, extreme temperatures, and corrosive environments.
- Do not attempt to modify or repair the module. Contact support if issues arise.

3. PRODUCT COMPONENTS

The package includes the following item:

- 1 x FTVOGUE 12V Liquid Water Level Controller Module



Figure 3.1: Top-down view of the FTVOGUE 12V Liquid Water Level Controller Module, showing the relay, capacitor, resistors, LEDs, and terminal blocks.

4. SPECIFICATIONS

Feature	Specification
Brand	FTVOGUE
Model Number	FTVOGUEcs8m2u9eo3
Operating Voltage	12V DC
Relay Contact Current	10A (AC 250V, DC 30V)
Dimensions (L x W x H)	Approx. 60 x 50 x 22 mm (2.4 x 2.0 x 0.9 in)
Material	PCB Board Electronic Component
Country of Origin	China

5. SETUP INSTRUCTIONS

Follow these steps to properly install and connect your water level controller module.

- 1. Identify Terminals:** Locate the power input terminals (9-12V), sensor input terminals (X, Z, S), and relay output terminals on the PCB. Refer to the image below for guidance.

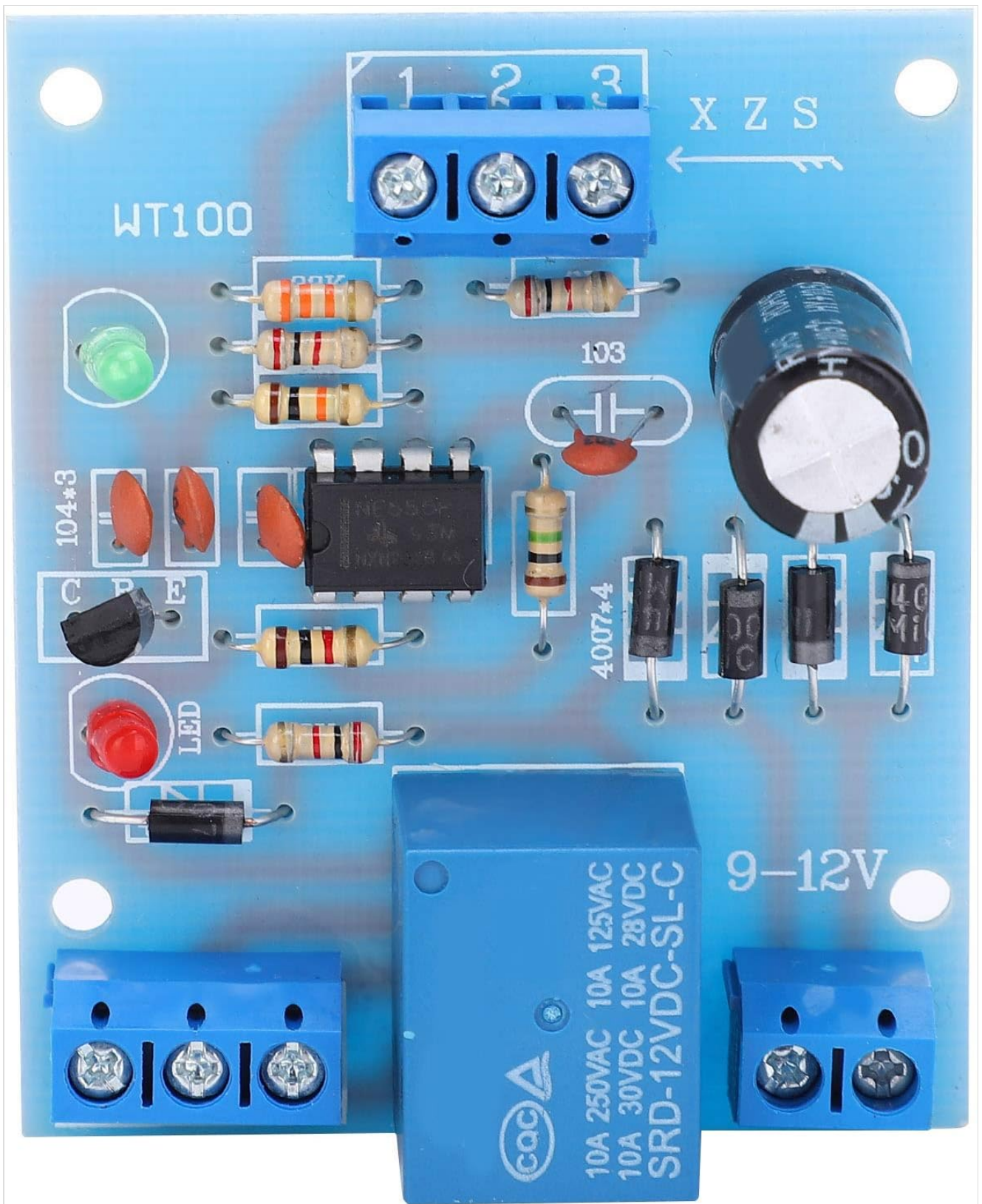


Figure 5.1: FTVOGUE 12V Liquid Water Level Controller Module showing the power input (9-12V), sensor input (X, Z, S), and relay output terminals.

2. **Power Connection:** Connect a stable 12V DC power supply to the terminals labeled "9-12V". Ensure correct polarity (+ and -).
3. **Sensor Connection:**
 - Connect the common probe (ground) to the 'S' terminal.
 - Connect the low-level probe (to activate pump) to the 'Z' terminal.
 - Connect the high-level probe (to deactivate pump) to the 'X' terminal.
 - Position the probes in your water tank or reservoir at the desired low and high water levels.

4. **Pump/Load Connection:** Connect your pump or other load to the relay output terminals. The relay acts as a switch. Ensure the pump's power requirements do not exceed the relay's maximum contact current (10A).
5. **Testing:** After all connections are secure, apply power to the module and test its functionality by manually simulating water level changes at the sensor probes.

6. OPERATING INSTRUCTIONS

The FTVOGUE Water Level Controller Module operates automatically based on the water levels detected by the connected probes.

- When the water level drops below the 'Z' (low-level) probe, the module will activate the relay, turning on the connected pump to fill the tank.
- When the water level rises and reaches the 'X' (high-level) probe, the module will deactivate the relay, turning off the pump to prevent overflow.
- The 'S' (common) probe should always be submerged in the water to provide a reference point for the other probes.



Figure 6.1: Angled view of the FTVOGUE 12V Liquid Water Level Controller Module, highlighting the electronic components and relay.

7. MAINTENANCE

To ensure optimal performance and longevity of your water level controller module, follow these maintenance guidelines:

- **Regular Inspection:** Periodically inspect all electrical connections for tightness and signs of corrosion.
- **Cleanliness:** Keep the module clean and free from dust, dirt, and moisture. Use a soft, dry cloth for cleaning.
- **Probe Condition:** Check the water level probes for mineral buildup or damage. Clean or replace probes as necessary to ensure accurate detection.
- **Environmental Conditions:** Ensure the module is operating within its specified environmental conditions (temperature,

humidity).

8. TROUBLESHOOTING

If you encounter issues with your FTVOGUE Water Level Controller Module, refer to the following troubleshooting guide:

Problem	Possible Cause	Solution
Module does not power on.	No power supply or incorrect voltage/polarity.	Verify 12V DC power supply is connected correctly with proper polarity. Check power source.
Pump does not turn on when water level is low.	<ul style="list-style-type: none">Incorrect sensor connection.Faulty low-level probe ('Z').Pump not connected correctly or is faulty.Relay malfunction.	<ul style="list-style-type: none">Check wiring of 'Z' and 'S' probes.Inspect low-level probe for damage or buildup.Verify pump operation by connecting it directly to power. Check relay output connections.
Pump does not turn off when water level is high.	<ul style="list-style-type: none">Incorrect sensor connection.Faulty high-level probe ('X').Relay malfunction.	<ul style="list-style-type: none">Check wiring of 'X' and 'S' probes.Inspect high-level probe for damage or buildup.Contact support if relay is suspected to be faulty.
Inaccurate water level detection.	<ul style="list-style-type: none">Dirty or corroded probes.Probes incorrectly positioned.	<ul style="list-style-type: none">Clean probes thoroughly.Adjust probe positions to ensure proper contact with water at desired levels.

9. WARRANTY INFORMATION

This FTVOGUE product comes with a manufacturer warranty for 90 days from the date of purchase. This warranty covers defects in materials and workmanship under normal use. It does not cover damage resulting from misuse, accident, modification, or unauthorized repair.

Please retain your proof of purchase for warranty claims.

10. SUPPORT

For technical assistance, troubleshooting beyond this manual, or warranty inquiries, please contact FTVOGUE customer support through the retailer where the product was purchased or refer to the manufacturer's official website for contact information.

For more information, you may visit the [FTVOGUE Store](#).

