



[Manuals.plus](#) /

> [Gyroor](#) /

> Gyroor G13 All-Terrain Self-Balancing Scooter Instruction Manual

Gyroor G13

Gyroor G13 All-Terrain Self-Balancing Scooter Instruction Manual

Model: G13

1. IMPORTANT SAFETY INFORMATION

Before operating your Gyroor G13 Self-Balancing Scooter, please read this manual thoroughly. Failure to follow instructions can result in serious injury or property damage. This product is UL2272 safety certified, ensuring compliance with U.S. safety regulations.

General Safety Precautions:

- Always wear a helmet, knee pads, elbow pads, and wrist guards when riding.
- Ensure the scooter is fully charged before each use.
- Do not ride under the influence of alcohol or drugs.
- Observe all local traffic laws and regulations.
- Avoid riding on wet, icy, or uneven surfaces.
- Do not perform stunts or sudden maneuvers.
- The maximum weight capacity is 176 pounds (80 kg).
- Recommended for ages 6 and up. Adult supervision is advised for younger riders.
- Keep fingers and other body parts away from moving parts.

RIDE SAFELY WITH G13

– SMOOTH RIDING ON ALL TERRAINS.



Figure 1.1: The Gyroor G13 is UL2272 certified for safety, ensuring a smooth ride on various terrains.

2. PRODUCT OVERVIEW

The Gyroor G13 is an all-terrain self-balancing scooter designed for various surfaces. It features powerful dual motors, integrated LED lighting, and a Bluetooth speaker for an enhanced riding experience.

Key Components:

- **Foot Pads:** Pressure-sensitive pads for control.
- **Wheels:** 6.5-inch non-slip rugged rubber tires for off-road capability.
- **LED Lights:** Integrated lights on wheels and front for visibility and aesthetics.
- **Charging Port:** For connecting the power adapter.

- **Power Button:** To turn the scooter on/off.
- **Bluetooth Speaker:** Built-in for audio playback.
- **Battery Indicator:** Displays current battery level.



Figure 2.1: Gyroor G13 Self-Balancing Scooter (Black model shown).

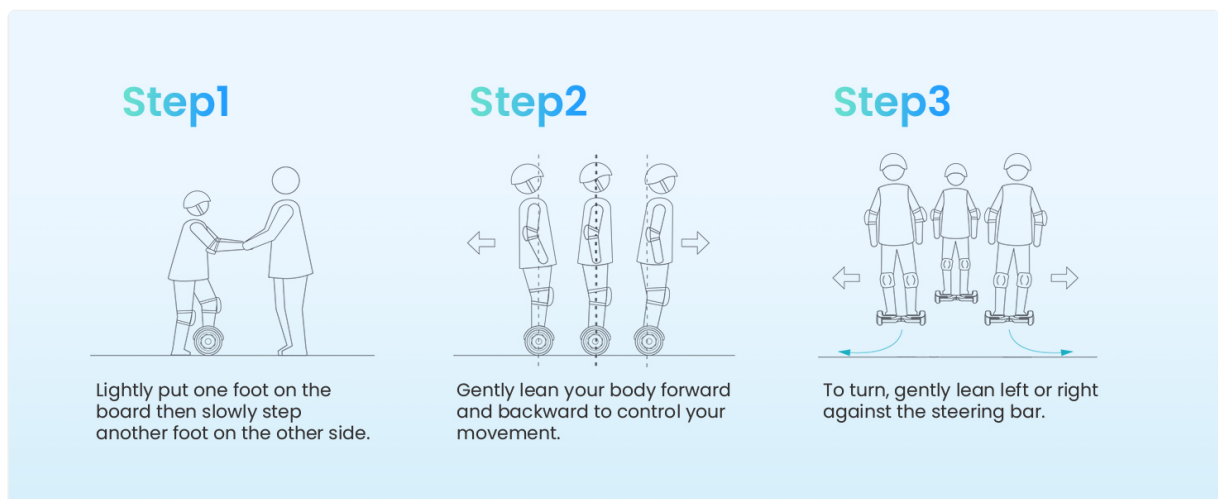


Figure 2.2: Internal view highlighting the dual 250W motors and battery compartment.

72WH BATTERY UP 7.75MILES



Max Distance



Max Speed



Charging Time

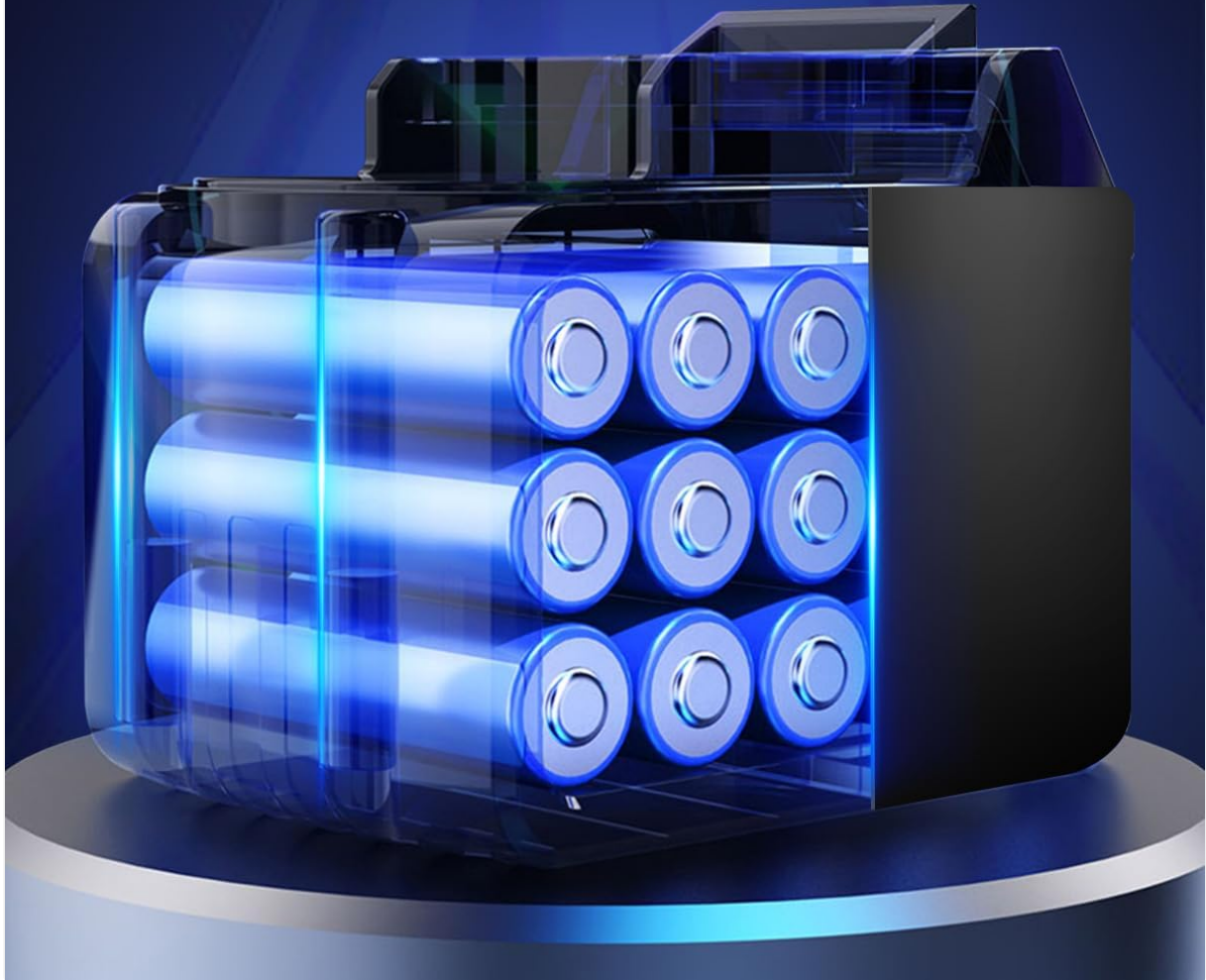


Figure 2.3: Detailed view of the 37V/2Ah lithium-ion battery, providing up to 8 miles of range.

STEREO BLUETOOTH SPEAKER



Figure 2.4: The integrated high-quality Bluetooth speaker allows for music playback during rides.

3. SETUP

3.1 Charging the Scooter:

- Locate the charging port on the side of the scooter.
- Connect the charger to the port, then plug the charger into a power outlet.
- The indicator light on the charger will change (e.g., red to green) when fully charged.
- Charging typically takes 2-3 hours. Do not overcharge.

3.2 Initial Calibration:

If the scooter does not balance correctly or drifts, it may need calibration:

1. Ensure the scooter is powered off.
2. Place the scooter on a flat, level surface.
3. Press and hold the power button for 5-10 seconds until the indicator lights flash.
4. Release the button and wait for the lights to stop flashing, indicating successful calibration.
5. Power off and then power on the scooter to reset.

Your browser does not support the video tag.

Video 3.1: Official Gyroor G13 Self-Balancing Scooter overview, demonstrating features and basic operation. This video is provided by the seller, Gyroor.

4. OPERATING INSTRUCTIONS

4.1 First Ride:

It is recommended to have assistance for your first few rides. Practice in an open, safe area.

1. Place the scooter on a flat surface and turn it on.
2. Step onto one foot pad with one foot, ensuring the scooter is stable.
3. Quickly and confidently step onto the other foot pad with your second foot.
4. Maintain a relaxed posture and keep your body centered.
5. To move forward, gently lean your body forward. To move backward, gently lean back.
6. To turn, apply slight pressure with your left foot to turn right, and with your right foot to turn left.
7. To dismount, step off one foot at a time, preferably backward.



Figure 4.1: Visual guide for mounting and controlling the self-balancing scooter.

4.2 Bluetooth Speaker Usage:

- Turn on the scooter. It will automatically enter Bluetooth pairing mode.
- On your smartphone or device, search for Bluetooth devices and select "Gyroor" (or similar name).
- Once paired, you can play music through the scooter's built-in speakers.

5. MAINTENANCE

5.1 Cleaning:

- Always power off the scooter before cleaning.
- Use a soft, damp cloth to wipe down the exterior.
- Do not use harsh chemicals or abrasive cleaners.
- Avoid getting water into electrical components.

5.2 Storage:

- Store the scooter in a cool, dry place away from direct sunlight.
- If storing for an extended period, charge the battery to about 50% every 3 months to prolong battery life.
- Keep away from extreme temperatures.

6. TROUBLESHOOTING

Common Issues and Solutions:

- **Scooter not turning on:** Ensure the battery is charged. Check the power button for damage.
- **Scooter not balancing/driftng:** Perform a calibration as described in Section 3.2.
- **Lights not working:** Check for loose connections or consult customer support.
- **Bluetooth not connecting:** Ensure Bluetooth is enabled on your device and the scooter is in pairing mode. Try restarting both devices.
- **Reduced range/power:** The battery may be low or nearing the end of its lifespan. Ensure proper charging and storage.

7. SPECIFICATIONS

Feature	Specification
Brand	Gyroor
Model Name	G13
Color	Black (as per current product variant)
Age Range (Description)	Big Kid
Special Features	Built-In Bluetooth speaker, LED Light, Long Battery Life, Non-Slip Deck, Rechargeable
Maximum Speed	7.75 Miles per Hour
Battery Description	Lithium-Ion (37V/2Ah)
Wheel Size	6.5 Inches
Maximum Range	Up to 8 miles
Brake Style	Regenerative braking
Item Weight	6.15 Kilograms
Item Dimensions (L x W x H)	24.8"L x 9.25"W x 8.86"H
Material	Rubber (for wheels and frame)
Recommended Uses	Outdoor
Included Components	Balancing Scooter, charger, user manual
Maximum Weight Recommendation	176 Pounds

8. WARRANTY AND SUPPORT

Warranty Information:

The Gyroor G13 Self-Balancing Scooter comes with a **6-month warranty for the battery** and a **1-year warranty for the controller** from the date of purchase. Please retain your proof of purchase for warranty claims.

Customer Support:

For any questions, technical assistance, or warranty claims, please contact Gyroor customer support. Refer to the contact information provided on the product packaging or the official Gyroor website.