

[Manuals.plus](#) /

> [Alpicool](#) /

> Alpicool MG9 Portable Refrigerator User Manual

Alpicool MG9

Alpicool MG9 Portable Refrigerator User Manual

Model: MG9 | Brand: Alpicool

1. INTRODUCTION

Thank you for choosing the Alpicool MG9 Portable Refrigerator. This compact and efficient appliance is designed to keep your food and beverages perfectly chilled or frozen, whether you're on the road, camping, or simply need extra cooling at home. Featuring a powerful variable speed DC compressor, it offers rapid cooling from -20°C to 20°C with precise 1°C temperature control. Its robust design ensures reliable performance even in challenging conditions, while its quiet operation makes it suitable for any environment. Please read this manual thoroughly before use to ensure safe and optimal operation.

2. SAFETY INFORMATION

To prevent injury to yourself and others, or damage to the appliance, please observe the following safety precautions:

- Ensure the power supply voltage matches the specifications of the refrigerator (AC100V, DC12V/24V).
- Do not operate the refrigerator if the power cord is damaged or if the appliance shows signs of malfunction.
- Place the refrigerator on a stable, level surface to ensure proper ventilation and prevent tipping.
- Allow adequate space around the unit for heat dissipation. Do not block ventilation openings.
- Avoid exposing the refrigerator to direct sunlight or heat sources.
- Do not immerse the refrigerator in water or expose it to heavy rain.
- Keep children away from the appliance, especially during operation.
- Unplug the refrigerator before cleaning or performing any maintenance.

3. PRODUCT OVERVIEW

The Alpicool MG9 portable refrigerator is designed for convenience and efficiency. It features a compact body with a spacious 9-liter interior, a user-friendly control panel, and robust construction.



Figure 3.1: Internal layout and capacity of the MG9. It can hold approximately 9 cans (355ml) or 3 bottles (500ml).

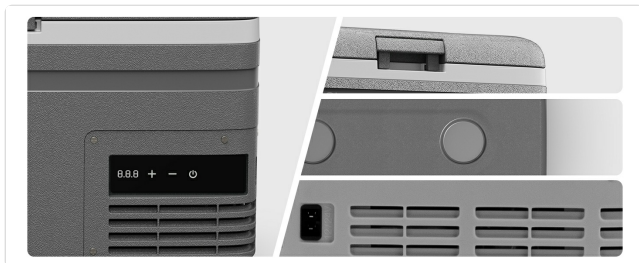


Figure 3.2: The intuitive touch control panel with LED display for temperature adjustment and mode selection.

Components:

- **Refrigerator Unit:** The main cooling appliance.
- **Lid:** Insulated lid with secure latches.
- **Control Panel:** Digital display and touch buttons for operation.
- **Power Ports:** AC and DC power input ports.
- **AC Adapter:** For connecting to a standard wall outlet (100V).
- **DC Cable:** For connecting to a car's 12V/24V power outlet.

4. SETUP

Follow these steps to set up your Alpicool MG9 portable refrigerator:

1. **Unpack:** Carefully remove the refrigerator from its packaging. Retain all packaging materials for future transport or storage.
2. **Placement:** Place the unit on a firm, level surface. Ensure there is at least 10 cm (4 inches) of space around all sides for proper ventilation. Avoid placing it near heat sources or in direct sunlight.
3. **Power Connection:**
 - **AC Power (Home Use):** Connect the AC adapter to the refrigerator's AC input port, then plug the AC cable into a standard 100V wall outlet.
 - **DC Power (Vehicle Use):** Connect the DC cable to the refrigerator's DC input port, then plug the other end into your vehicle's 12V or 24V cigarette lighter socket.
4. **Initial Start-up:** After connecting power, press the power button on the control panel to turn on the unit. The LED display will show the current internal temperature.

5. OPERATING INSTRUCTIONS

The Alpicool MG9 features a user-friendly touch control panel for easy operation.

Control Panel Functions:

- **Power Button ():** Press to turn the unit ON or OFF.

- **Temperature Up Button (+):** Press to increase the target temperature.
- **Temperature Down Button (-):** Press to decrease the target temperature.
- **Mode Button (▼):** Press to cycle through operating modes (e.g., Max/ECO).

Setting Temperature:

With the unit powered on, use the + and - buttons to set your desired temperature. The temperature can be adjusted in 1°C increments within the range of -20°C to 20°C. The display will flash while setting and then show the current internal temperature once set.

Memory Function:

The refrigerator features a memory function that retains your last temperature setting even after the power is turned off. This eliminates the need to reset the temperature each time you restart the unit.

Internal Light:


An internal light is provided for convenience, allowing you to easily view contents in low-light conditions.

6. TEMPERATURE SETTINGS & MODES

The Alpicool MG9 offers flexible temperature control and operating modes to suit your needs.

Temperature Range:

The unit can cool or freeze contents from **-20°C to 20°C**. It can reach 0°C in approximately 23 minutes and -20°C in about 56 minutes (based on an ambient temperature of 25°C and an empty box).



仕様

製品型式:	MG9
容量:	8.7L/9QT
冷却温度範囲:	-4°F~68°F(-20°C~20°C)
電源:	12/24V DC 100~240V AC
外形寸法:	16.22*9.84*11.10 inches 41.2*25*28.2 cm
本体質量:	6.3kg/13.9 lbs

Figure 6.1: Rapid cooling performance from 25°C to -20°C.

Operating Modes:

Press the **Mode Button (▼)** to switch between modes:

- **MAX Mode (Rapid Cooling):** Provides maximum cooling power for quick temperature reduction.
- **ECO Mode (Energy Saving):** Optimizes power consumption for extended operation, ideal when battery life is a concern.

Recommended Food Temperatures:

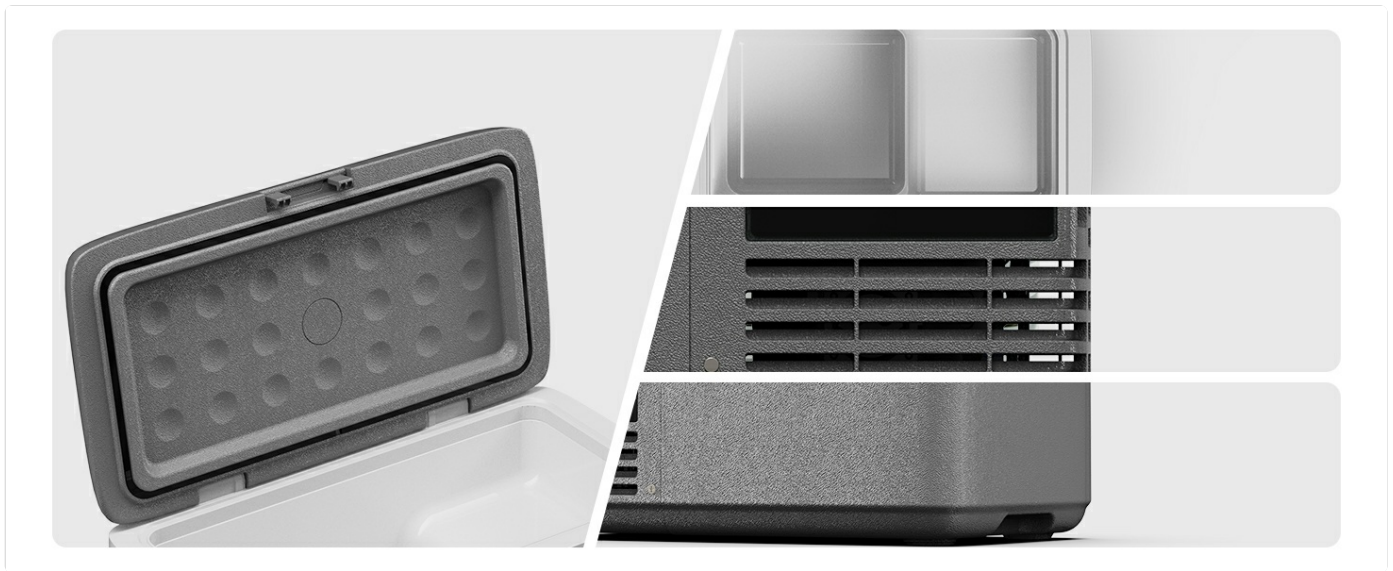


Figure 6.2: General recommended temperatures for different food types.

7. MAINTENANCE

Regular maintenance ensures the longevity and efficient operation of your Alpicool MG9 refrigerator.

Cleaning:

- Always unplug the unit before cleaning.
- Wipe the interior and exterior surfaces with a soft cloth dampened with mild detergent and water.
- Do not use abrasive cleaners, harsh chemicals, or sharp objects, as these can damage the surfaces.
- Ensure all surfaces are completely dry before plugging the unit back in.

Defrosting:

The Alpicool MG9 features an automatic defrost system. However, if a significant layer of ice builds up, manually defrost the unit:

1. Turn off the refrigerator and unplug it.
2. Remove all contents.
3. Leave the lid open to allow the ice to melt naturally.
4. Wipe away any melted water with a clean cloth.
5. Do not use sharp objects to remove ice, as this can damage the cooling elements.

Storage:

When storing the refrigerator for an extended period, ensure it is clean, dry, and the lid is slightly ajar to prevent odors and mold growth.

8. TROUBLESHOOTING

If you encounter issues with your Alpicool MG9, refer to the following common problems and solutions:

Problem	Possible Cause	Solution
Refrigerator does not turn on.	No power supply; damaged power cord; faulty power outlet.	Check power connections; try a different outlet; inspect power cord for damage.

Problem	Possible Cause	Solution
Refrigerator is not cooling effectively.	Temperature setting too high; poor ventilation; excessive contents; lid not sealed properly.	Lower temperature setting; ensure proper ventilation; reduce contents; check lid seal.
Unusual noise during operation.	Unit not level; fan obstruction; normal compressor noise.	Ensure unit is on a level surface; check for obstructions around fan; note that compressor noise below 45dB is normal.
Error code displayed.	Internal sensor issue; voltage fluctuation.	Turn off and restart the unit; if the error persists, contact customer support.

If the problem persists after attempting these solutions, please contact Alpicool customer support for assistance.

9. SPECIFICATIONS

Detailed technical specifications for the Alpicool MG9 Portable Refrigerator:

Feature	Specification
Model	MG9
Capacity	9 Liters
Cooling Temperature Range	-20°C to 20°C (-4°F to 68°F)
Power Input	AC 100V, DC 12V/24V
Rated Power	45W
Product Dimensions (D x W x H)	25 cm x 41 cm x 28 cm (9.84 in x 16.22 in x 11.05 in)
Net Weight	6.2 kg (13.67 lbs)
Noise Level	<45 dB
Cooling Method	Compressor Type
Defrost System	Automatic
Included Components	AC Adapter, AC Cable, DC Cable
Country of Origin	China



Figure 9.1: Noise level comparison, highlighting the MG9's quiet operation.

10. WARRANTY AND SUPPORT

Alpicool stands behind the quality of its products.

Warranty:

This product comes with a **1-year free repair service** from the date of purchase. This warranty covers manufacturing defects and malfunctions under normal use. Please retain your proof of purchase for warranty claims.

Customer Support:

For any questions, technical assistance, or warranty claims, please contact Alpicool customer support. Our support team is available 24 hours a day to provide prompt assistance.

Contact information can typically be found on the Alpicool official website or on your product packaging.