

[Manuals.plus](#) /

> [LG](#) /

> LG 55-Inch Class OLED evo AI 4K C6 Series Smart TV User Manual (Model OLED55C6PUA)

LG OLED55C6PUA

LG 55-Inch Class OLED evo AI 4K C6 Series Smart TV User Manual

Model: OLED55C6PUA

INTRODUCTION

This manual provides essential information for the setup, operation, maintenance, and troubleshooting of your LG 55-Inch Class OLED evo AI 4K C6 Series Smart TV. Please read this manual thoroughly before using your television to ensure proper and safe operation.

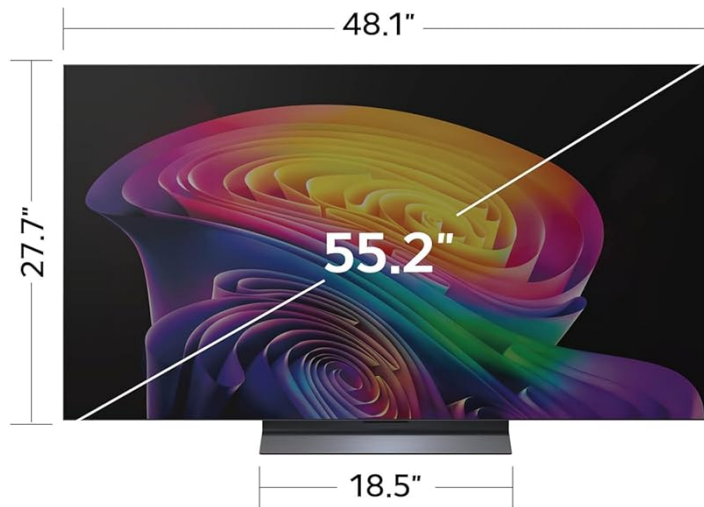
WHAT'S IN THE BOX

Verify that all components are present in the packaging:

- LG 55-Inch Class OLED evo AI 4K C6 Series Smart TV
- Stand
- Power Cable
- Remote Control
- Remote Control Battery (2 AAA batteries)
- User Manual (this document)

LG OLED_{evo} AI

55"

 Class (55.2" Diag)
OLED55C6PUA

Dimensions

(Inches W x H x D)

- 48.1 x 27.7 x 1.8 (without stand)
- 48.1 x 29.8 x 9.1 (with stand)
- 18.5 (stand footprint)



What's in the box

- Magic Remote
- Remote Control Batteries
- Power Cable
- Stand
- Quick Start Guide

Image: Overview of TV dimensions and included accessories.

SETUP

Unpacking and Placement

Carefully remove the TV from its packaging. Place the TV on a stable, level surface or mount it on a wall using a compatible VESA 400 x 400 mm mount. Ensure adequate ventilation around the TV.

- **Product Dimensions (W x H x D):** 48.1" x 29.8" x 9.1" (with stand)
- **Product Dimensions (W x H x D):** 48.1" x 27.7" x 1.8" (without stand)
- **Stand Footprint:** 18.5"



Image: Front view of the LG OLED TV with its stand.

Stand Installation

If using the included stand, attach it securely to the TV following the instructions provided in the quick start guide. Ensure all screws are tightened to prevent instability.

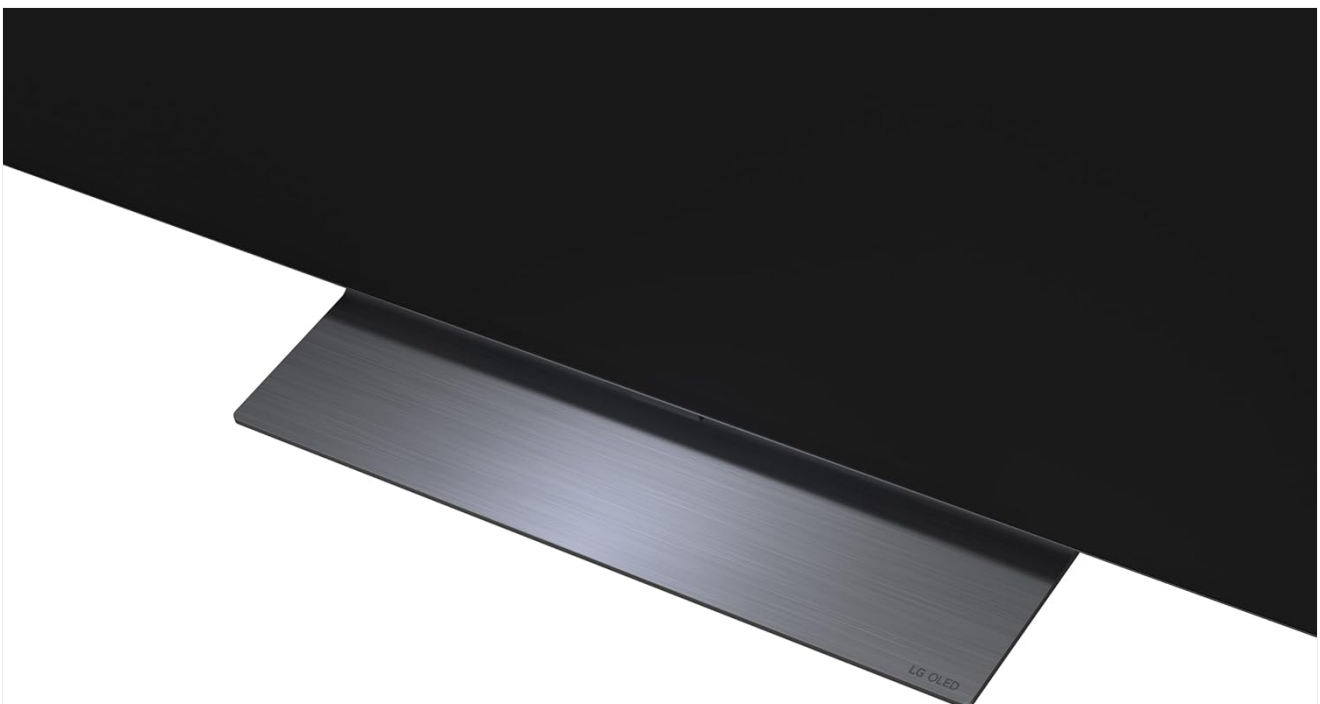


Image: Detail of the TV stand.

Connecting Peripherals

Connect your external devices such as gaming consoles, soundbars, or media players to the TV's ports. The TV features multiple connectivity options:

- **HDMI:** 4 ports for high-definition audio and video.
- **USB:** 2 USB 2.0 ports, 1 USB 3.0 port for media playback or connecting accessories.
- **Ethernet (LAN):** For wired internet connection.
- **Optical Audio Output:** For connecting to external audio systems.
- **Wi-Fi & Bluetooth:** For wireless connectivity.



Image: Rear view of the TV showing connectivity ports.



Image: Close-up of the TV's HDMI and USB ports.

Power Connection

Connect the power cable to the TV and then to a wall outlet. Ensure the power outlet is easily accessible.

Remote Control Setup

Insert the two AAA batteries into the Magic Remote control, observing the correct polarity. The remote is designed for intuitive navigation and voice control.

Initial Power On and Setup Wizard

Press the power button on the remote or TV. Follow the on-screen instructions to complete the initial setup, including language selection, network connection, and channel tuning.

OPERATING YOUR TV

Basic Controls

Use the Magic Remote to navigate menus, adjust volume, change channels, and select input sources. The pointer function allows for quick selection of on-screen elements.

webOS Smart TV Platform

Your LG TV runs on the webOS 2026 platform, providing access to a wide range of streaming services and applications. Explore LG Channels for over 400 free channels and thousands of on-demand movies and shows.

webOS



TECHNOLOGY
& ENGINEERING
EMMYS®

The heart of home entertainment

LG'S EMMY® AWARD-WINNING webOS SMART TV PLATFORM

Get access to apps & view over 400 free LG Channels and 10,000+ movies & shows (on-demand).



Watch 400+ FREE live channels

and stream thousands of on demand movies and series.



Endless content at your fingertips

Binge all you want with full libraries of content from your favorite apps.



Play 500+ FREE single + multiplayer games

and access popular game titles through cloud gaming apps.



Software that stays good as new

Our webOS Re: New program automatically equips you with new software updates and version upgrades.*



EMMY, EMMYS, and the Emmy Statuette are registered trademarks and/or copyrights OF ATAS and NATAS.
*Supported menus and apps may vary by country and be different upon release.
Separate subscriptions required. Terms Apply.



Image: LG webOS Smart TV platform interface.

AI Features (Alpha 11 AI Processor Gen3)

The Alpha 11 AI Processor Gen3 enhances picture and sound quality through deep learning. It analyzes content to optimize settings for a personalized viewing experience, including AI Picture and AI Sound features.

Our most powerful & fastest next gen processor with Dual AI Engine

Find and choose what to watch fast and without lag. See movies in perfected tone with AI Director Processing.

Up to **5.6X**
NPU
Faster AI
Neural Processing

50%
CPU
Faster Processing

70%
GPU
More Powerful Graphics

Dual AI Engine

*Performance results based on LG internal testing of the LG α11 Processor Gen3 vs. the LG α9 AI Processor Gen8.

Image: Alpha 11 AI Processor Gen3 with Dual AI Engine.

Picture and Sound Enhancements

- **Brightness Booster:** Delivers brighter visuals and vivid detail.
- **Perfect Black and Perfect Color:** Over 8.3 million self-lit pixels provide infinite contrast and accurate colors, even in bright rooms.
- **Dolby Vision & HDR10:** Supports advanced HDR formats for extraordinary color, contrast, and brightness.
- **Dolby Atmos:** Provides immersive, multi-dimensional sound.
- **Filmmaker Mode:** Preserves the director's original vision by disabling motion smoothing and other post-processing effects.

Perfect Black and Perfect Color in any light

LG's flagship OLED technology delivers stellar picture quality with Perfect Black & Perfect Color technology with over 8.3 million self-lit pixels, even in bright rooms.



Verified by UL Solutions for Perfect Black technology delivering black levels $\leq 0.24\text{nit}$ up to 500lux and Perfect Color technology delivers color consistency levels $>99\%$ up to 500lux. LG OLED is certified by Intertek for Reflection Free measured to IDMS 11.2.2 sampling sphere implementation. to 83/77/65-inch G6 only has Reflection Free Premium Certification.

Image: Demonstration of Perfect Black and Perfect Color technology.

Gaming Features

The C6 Series TV is optimized for gaming with features designed for a smooth and responsive experience:

- **165Hz Refresh Rate:** For ultra-smooth motion.
- **0.1ms Response Time:** Minimizes input lag.
- **NVIDIA G-Sync & AMD FreeSync Premium:** Reduces screen tearing and stuttering.
- **Four HDMI 2.1 Inputs:** Supports advanced gaming features.

Game in 4K with the power of LG OLED

Experience crisp, smooth imagery from a 0.1ms response time and up to 165Hz refresh rate* to let you game at blinding speed without any blurring or tearing to keep up with the fastest games.



*PC with 165Hz graphic card required.

Image: Gaming features highlighting 165Hz, G-Sync, and FreeSync Premium.

AI Hub and Voice Control

The AI Hub provides a personalized AI experience with features like Multi AI Search (powered by Google Gemini and Microsoft Copilot), AI Concierge, AI Voice ID, AI Picture Wizard, and AI Sound Wizard. Simply press the AI button on your remote to access these functions.

AI Hub for personalization

With one press of the AI button, AI Hub unlocks a smart, personalized AI experience.



Image: AI Hub features accessible via the Magic Remote.

Multi AI search with Google Gemini and Microsoft Copilot

Simply say what you are searching for, select the AI model that suits you best, and multiple AIs deliver broader, more relevant results.



**Honoree for
Artificial Intelligence**

Multi-AI architecture (webOS26)

Internet connection and LG account required to access our network-based smart services.

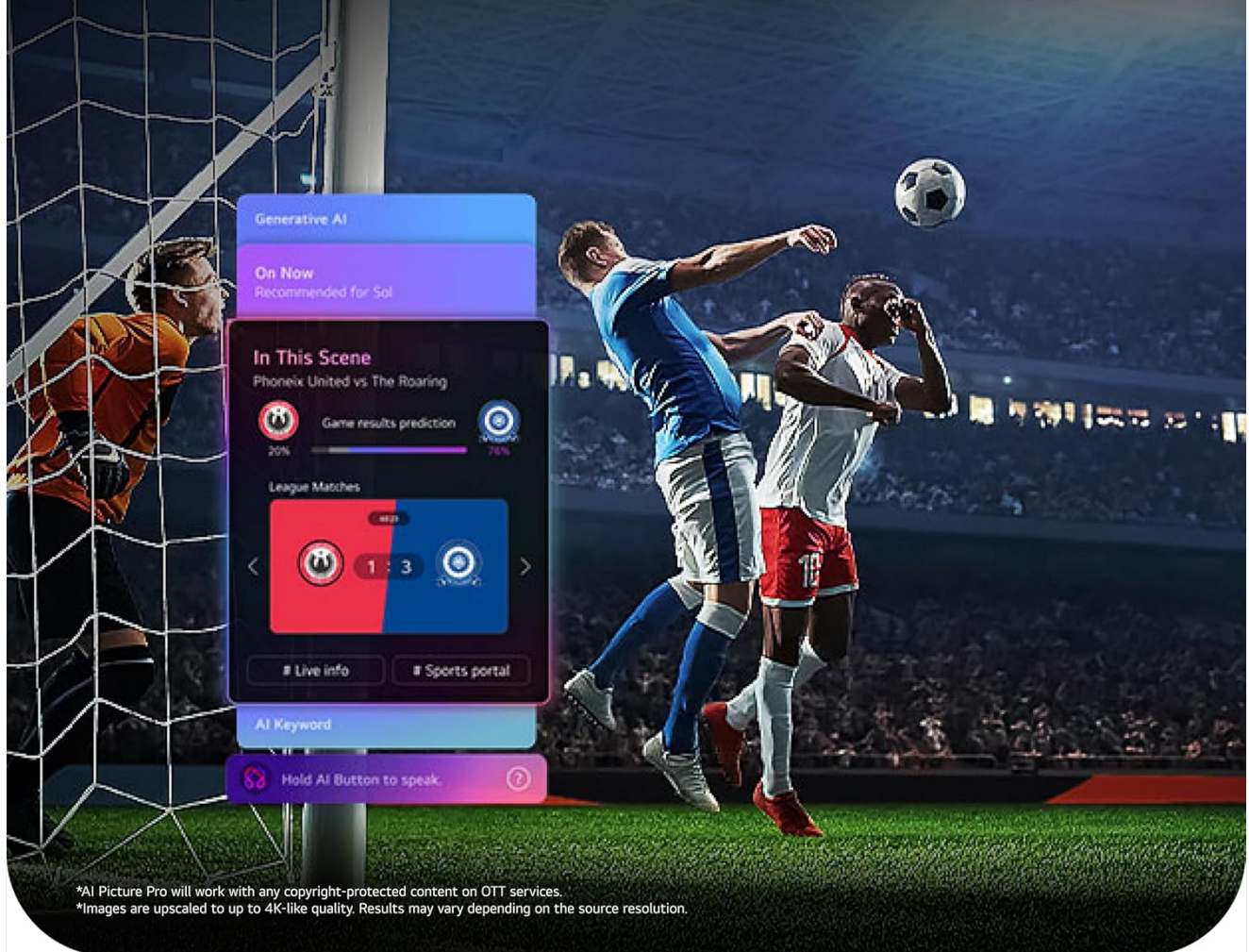
Image: Multi AI search with Google Gemini and Microsoft Copilot integration.

Dynamic Sports

Dynamic Sports is an exclusive feature built into webOS Smart TVs, offering a tailored sports experience. It provides real-time updates, scores, and highlights, ensuring you don't miss any action.

Your ultimate Sports Hub

Dynamic Sports is an exclusive sports experience built into LG's webOS Smart TVs. It's designed for fans who don't want to miss a single play, score, or highlight.



*AI Picture Pro will work with any copyright-protected content on OTT services.
*Images are upscaled to up to 4K-like quality. Results may vary depending on the source resolution.

Image: Dynamic Sports Hub interface during a soccer match.

MAINTENANCE

OLED Care

Your LG OLED TV includes OLED Care features to help protect the display and maintain picture quality over time. These features manage pixel refresh cycles and screen shift to prevent image retention.



Image: OLED Care feature for display protection.

General Cleaning

To clean the screen, gently wipe it with a soft, dry, lint-free cloth. For stubborn marks, slightly dampen the cloth with water or a specialized screen cleaner. Avoid using harsh chemicals or abrasive materials. Clean the TV's exterior with a soft, dry cloth.

Software Updates

The TV's software will automatically download updates for up to 5 years. Ensure your TV is connected to the internet to receive the latest features and security enhancements. If auto-update is disabled, you will receive notifications to accept or deny updates.

TROUBLESHOOTING

If you encounter issues with your TV, refer to the following common solutions:

- **No Power:** Check the power cable connection and the wall outlet. Try plugging another device into the outlet to confirm it is working.
- **No Picture/Sound:** Verify the correct input source is selected. Check cable connections to external devices. Restart the TV and connected devices.
- **Remote Control Not Working:** Ensure batteries are correctly inserted and not depleted. Point the remote directly at the TV.
- **Network Connectivity Issues:** Check your Wi-Fi router or Ethernet cable connection. Restart your router and TV.

LG Shield

LG Shield provides real-time scanning and automatic updates to protect your TV against malware, viruses, and other cyber threats, ensuring your digital security.

LG Shield

Your digital guardian

The LG Shield helps provide privacy protection against malware, viruses, and other cyber threats with real-time scanning and automatic updates.*



LG Shield



*LG account required to access our network-based smart services.

Image: LG Shield security features.

SPECIFICATIONS

Feature	Detail
Brand	LG
Model Name	C6
Model Number	OLED55C6PUA
Screen Size	55 Inches
Display Technology	OLED
Resolution	4K
Refresh Rate	120 Hz (Native), up to 165Hz for PC gaming
Processor	Alpha 11 AI Processor Gen3

Feature	Detail
HDR Format Supported	Dolby Vision, HDR10, HLG
Audio	Dolby Atmos (2.2 Channels)
Operating System	webOS 2026
Connectivity Technology	Bluetooth, Ethernet, HDMI (4 ports), USB (2x 2.0, 1x 3.0), Wi-Fi
Special Features	AMD FreeSync, Built-In Speaker, Chromecast, Intelligent Voice Recognition, NVIDIA G-Sync
Mounting Type	Wall Mount (VESA 400 x 400 mm)
Product Dimensions (with stand)	9.1"D x 48.1"W x 29.8"H
Item Weight	35.1 Pounds
UPC	195174137123, 195174137130

WARRANTY INFORMATION

Your LG 55-Inch Class OLED evo AI 4K C6 Series Smart TV comes with a **1 Year Parts and Labor Limited Warranty**. Please retain your proof of purchase for warranty claims. For full terms and conditions, refer to the warranty card included with your product or visit the official LG website.

CUSTOMER SUPPORT

For further assistance, technical support, or service inquiries, please visit the official LG website or contact LG customer service. You can find contact details and additional resources on the LG support page for your region.