

[Manuals.plus](#) /

> [LG](#) /

> LG 77-Inch Class OLED evo AI 4K C6 Series Smart TV (OLED77C6HUP) User Manual

LG OLED77C6HUP

LG 77-Inch Class OLED evo AI 4K C6 Series Smart TV User Manual

Model: OLED77C6HUP

1. SETUP GUIDE

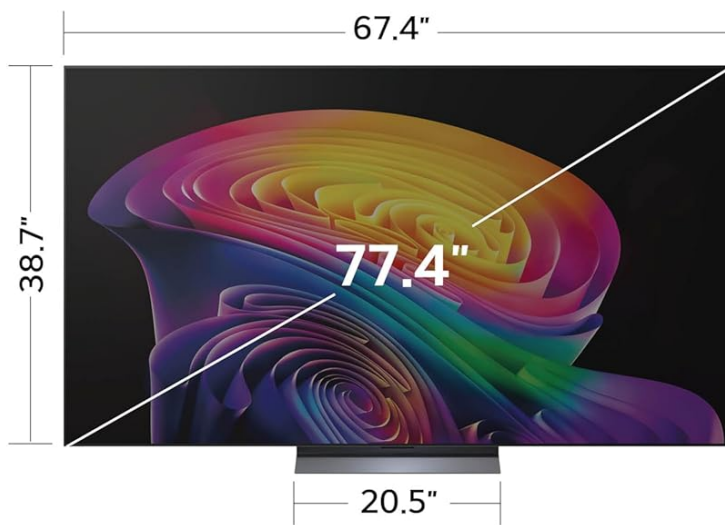
1.1 Unboxing and Package Contents

Carefully unpack your LG OLED77C6HUP TV. Ensure all components listed below are present. Retain the packaging materials for future transport or service needs.

- LG 77-Inch Class OLED evo AI 4K C6 Series Smart TV
- Magic Remote
- Remote Control Batteries (2 AAA)
- Power Cable
- Stand Components
- User Manual (this document)
- Quick Start Guide

LG OLED evo AI

77" Class (77.4" Diag)
OLED77C6HUP



Dimensions

(Inches W x H x D)

- 67.4 X 38.7 X 1.9
(without stand)
- 67.4 X 40.7 X 10.5
(with stand)
- 20.5
(stand footprint)



What's in the box

- Magic Remote
- Remote Control Batteries
- Power Cable
- Stand
- Quick Start Guide

Image: LG OLED evo AI TV showing overall dimensions and included accessories.

1.2 Stand Installation

If you are not wall-mounting the TV, attach the included stand. Follow the instructions provided in the Quick Start Guide for secure assembly. The stand footprint is 20.5 inches wide.



Image: Detailed view of the TV stand base.

1.3 Wall Mounting

For wall mounting, use a VESA compatible mount with a standard of 300 x 200 mm. Consult a professional for installation to ensure safety and proper mounting.



Image: Side profile of the LG OLED TV, illustrating its thin design suitable for wall mounting.

1.4 Connecting Peripherals

Connect your external devices to the TV's ports. The TV features 4 HDMI ports, 2 USB 2.0 ports, 1 USB 3.0 port, an Ethernet port, and an antenna input.

- **HDMI:** For Blu-ray players, gaming consoles, and set-top boxes.
- **USB:** For external storage devices or compatible accessories.
- **Ethernet (LAN):** For a wired internet connection.
- **Antenna/Cable:** For over-the-air broadcasts or cable TV.

Multi AI search with Google Gemini and Microsoft Copilot

Simply say what you are searching for, select the AI model that suits you best, and multiple AIs deliver broader, more relevant results.



Honoree for
Artificial Intelligence

Multi-AI architecture (webOS26)

Internet connection and LG account required to access our network-based smart services.

Image: Rear view of the LG OLED TV highlighting the connectivity ports.

1.5 Remote Control Battery Installation

Open the battery compartment on the back of the Magic Remote. Insert two AAA batteries, ensuring correct polarity (+/-). Close the compartment securely.

1.6 Initial Power On and webOS Setup

Connect the power cable to the TV and a wall outlet. Press the power button on the remote or TV. Follow the on-screen instructions to complete the initial setup of webOS, including network connection, channel scanning, and basic settings.

2. OPERATING YOUR TV

2.1 Basic Functions

- **Power:** Press the power button on the remote to turn the TV on or off.

- **Volume:** Use the volume up/down buttons to adjust the sound level.
- **Channel:** Use the channel up/down buttons to change channels or navigate lists.
- **Input:** Press the input button to select connected devices (HDMI, USB, etc.).

2.2 Smart TV Features (webOS)

Your TV runs on the webOS operating system, providing access to various streaming services and smart features. Use the Magic Remote to navigate the intuitive interface.






The heart of home entertainment

LG'S EMMY® AWARD-WINNING webOS SMART TV PLATFORM

Get access to apps & view over 400 free LG Channels and 10,000+ movies & shows (on-demand).



Watch 400+ FREE live channels
and stream thousands of on demand movies and series.



Endless content at your fingertips
Binge all you want with full libraries of content from your favorite apps.



Play 500+ FREE single + multiplayer games
and access popular game titles through cloud gaming apps.



Software that stays good as new
Our webOS Re: New program automatically equips you with new software updates and version upgrades.*



EMMY, EMMYS, and the Emmy Statuette are registered trademarks and/or copyrights OF ATAS and NATAS.
*Supported menus and apps may vary by country and be different upon release.
Separate subscriptions required. Terms Apply.



Image: The webOS smart TV platform interface, showcasing available applications and content.

AI Hub for Personalization

The AI Hub, accessible via the AI button on your remote, offers personalized AI experiences including Multi AI Search, AI Concierge, AI Picture Wizard, AI Sound Wizard, AI Voice ID, and AI Chatbot.

AI Hub for personalization

With one press of the AI button, AI Hub unlocks a smart, personalized AI experience.



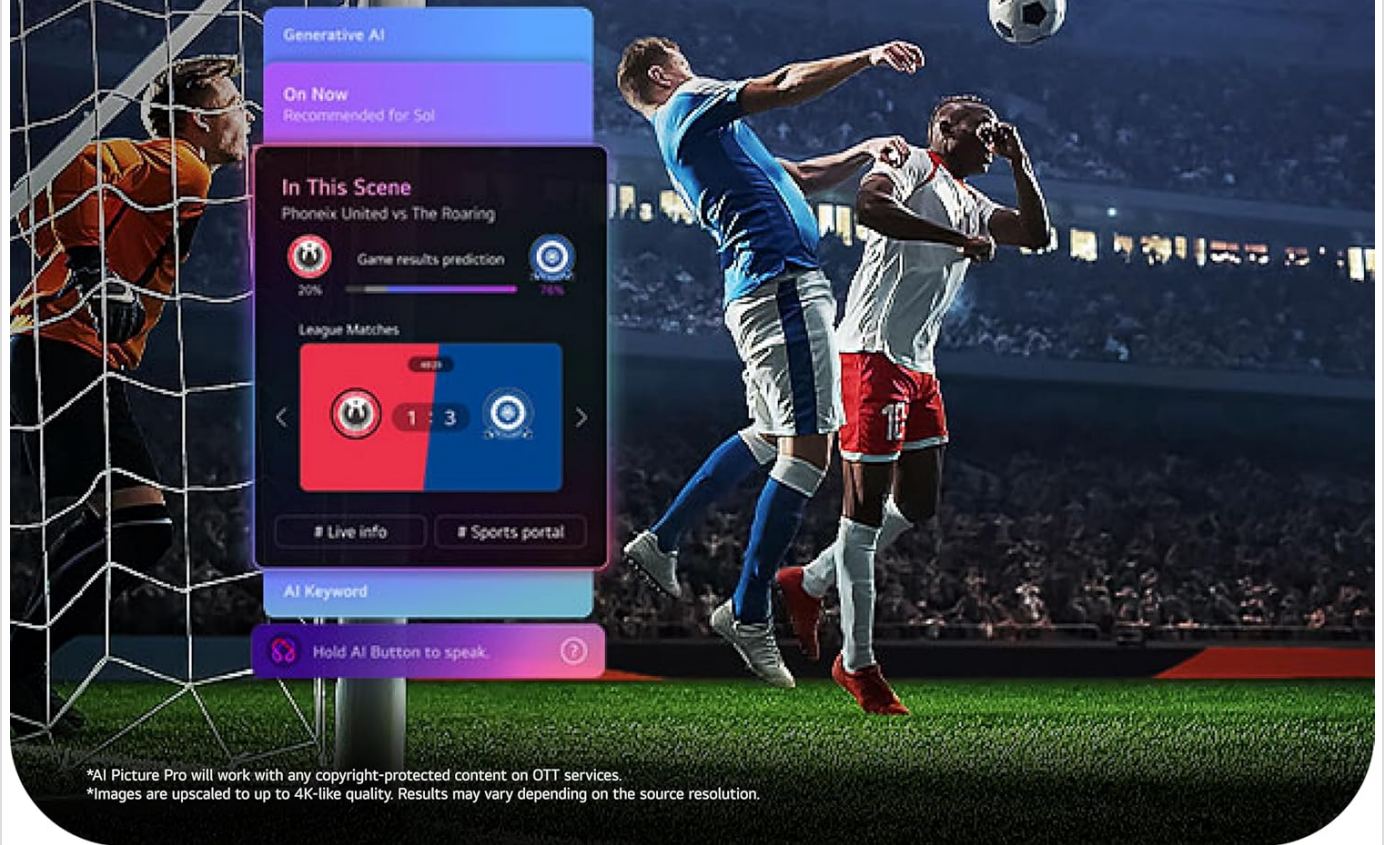
Image: Magic Remote highlighting the AI button and various AI Hub features.

Multi AI Search with Google Gemini and Microsoft Copilot

Utilize the Multi AI search function to find content and information across multiple AI models, including Google Gemini and Microsoft Copilot, for broader and more relevant results.

Your ultimate Sports Hub

Dynamic Sports is an exclusive sports experience built into LG's webOS Smart TVs. It's designed for fans who don't want to miss a single play, score, or highlight.



*AI Picture Pro will work with any copyright-protected content on OTT services.
*Images are upscaled to up to 4K-like quality. Results may vary depending on the source resolution.

Image: Multi AI search interface displaying integration with Google Gemini and Microsoft Copilot.

2.3 Picture Settings

Your LG OLED TV offers advanced picture technologies for optimal viewing.

- **Brightness Booster Pro:** Magnifies each pixel to shine up to 3.2 times brighter for enhanced luminosity.
- **Perfect Black and Perfect Color:** Over 8.3 million self-lit pixels deliver perfect black levels and accurate colors in any lighting condition.
- **Dolby Vision, HDR10, HLG:** Supports multiple HDR formats for extraordinary color, contrast, and brightness.
- **Filmmaker Mode:** Preserves the director's original vision by disabling post-processing effects.
- **AI Picture:** The a11 AI Processor Gen3 optimizes picture quality in real-time.

Brightness Booster Pro

The LG OLED evo shines up to 3.2x brighter* with Brightness Booster Pro technology which magnifies each individual pixel.



3.2X Brighter

*Performance results based on LG internal testing of the LG α11 Processor Gen3 vs. the LG α8 Processor Gen3. LG α8 Processor Gen3 available on the OLED B6 Series.

Image: Visual representation of Brightness Booster Pro technology, illustrating increased brightness.

Perfect Black and Perfect Color in any light

LG's flagship OLED technology delivers stellar picture quality with Perfect Black & Perfect Color technology with over 8.3 million self-lit pixels, even in bright rooms.



Verified by UL Solutions for Perfect Black technology delivering black levels $\leq 0.24\text{nit}$ up to 500lux and Perfect Color technology delivers color consistency levels $>99\%$ up to 500lux. LG OLED is certified by Intertek for Reflection Free measured to IDMS 11.2.2 sampling sphere implementation, to 83/77/65-inch G6 only has Reflection Free Premium Certification.

Image: Display demonstrating Perfect Black and Perfect Color capabilities in various light conditions.

2.4 Sound Settings

Experience immersive audio with your TV's sound features.

- **Dolby Atmos:** Provides multi-dimensional sound that moves around you.
- **Wow Orchestra:** Integrates the TV's speakers with a compatible LG soundbar for an enhanced audio experience.

2.5 Gaming Features

The TV is equipped with features for an optimal gaming experience.

- **165Hz Refresh Rate:** Supports high frame rates for smooth gameplay.
- **0.1ms Response Time:** Minimizes input lag for quick reactions.
- **NVIDIA G-Sync & AMD FreeSync Premium:** Reduces screen tearing and stuttering for fluid visuals.

Game in 4K with the power of LG OLED

Experience crisp, smooth imagery from a 0.1ms response time and up to 165Hz refresh rate* to let you game at blinding speed without any blurring or tearing to keep up with the fastest games.



*PC with 165Hz graphic card required.

Image: Dynamic gaming visual highlighting the 165Hz refresh rate and G-Sync/FreeSync compatibility.

2.6 Sports Hub

The Dynamic Sports Hub provides an exclusive sports experience, ensuring you don't miss any key moments, scores, or highlights.



Image: Screenshot of the Dynamic Sports Hub interface during a live soccer game.

3. MAINTENANCE AND CARE

3.1 OLED Care

To maintain the best picture quality and longevity of your OLED display, utilize the built-in OLED Care features. These features help protect the display from potential issues over time.

3.2 Cleaning Instructions

- **Screen:** Gently wipe the screen with a soft, dry, microfiber cloth. For stubborn marks, lightly dampen the cloth with distilled water. Avoid harsh chemicals or abrasive materials.
- **TV Body:** Use a soft, dry cloth to clean the frame and stand.
- **Remote Control:** Wipe with a soft, dry cloth.

3.3 Software Updates

Ensure your TV's software is up-to-date for optimal performance and new features. webOS 26 automatically downloads updates for up to 5 years. If auto-update is disabled, you will receive a notification to accept or deny updates. An LG account is required to access network-based smart services.

3.4 LG Shield Security

LG Shield provides digital protection against malware, viruses, and other cyber threats through real-time scanning and

automatic updates. An LG account is required to access network-based smart services.

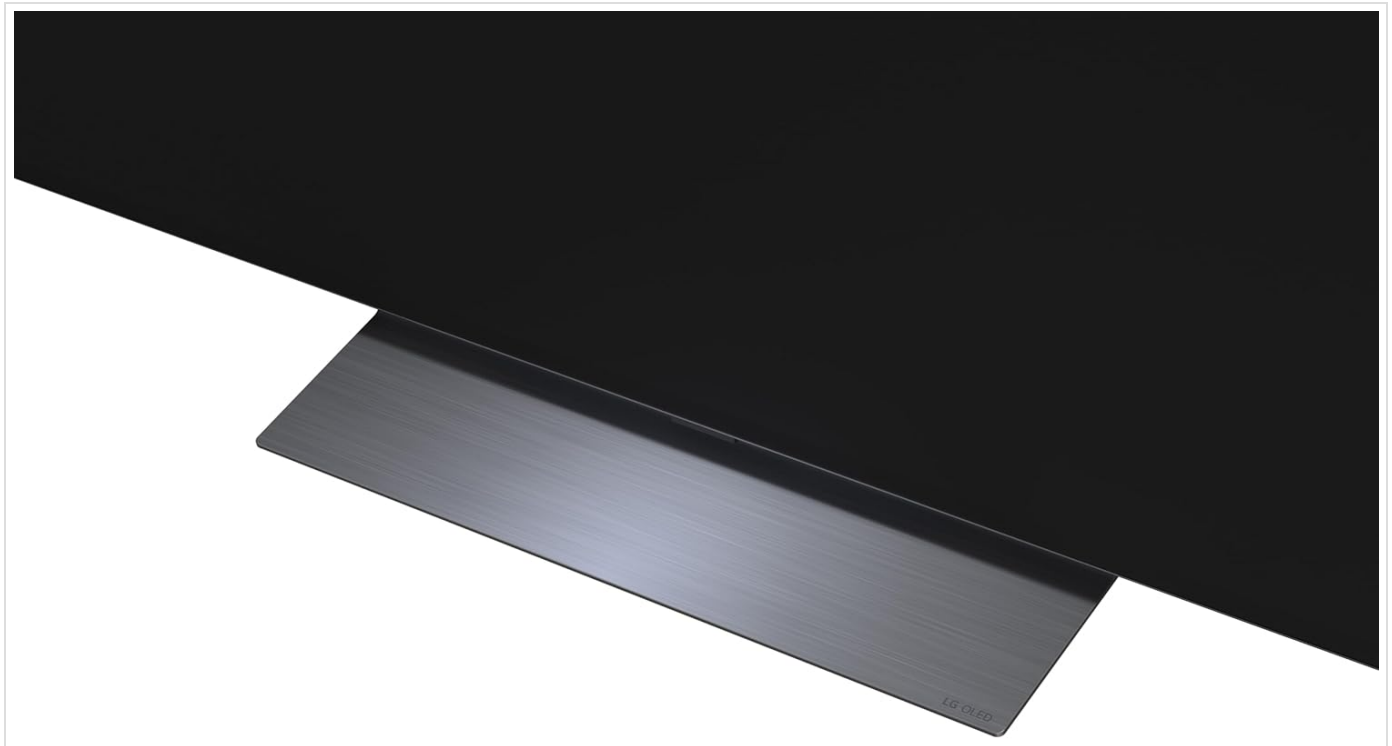


Image: LG Shield security feature, represented by shield and lock icons, indicating digital protection.

4. TROUBLESHOOTING COMMON ISSUES

This section addresses common problems you might encounter with your TV. If the issue persists, contact customer support.

Problem	Possible Solution
No Power	Ensure the power cable is securely connected to both the TV and a working electrical outlet. Test the outlet with another device.
No Picture / Black Screen	Check if the TV is turned on. Verify the correct input source is selected. Ensure all HDMI cables are securely connected. Try restarting the TV by unplugging it for 30 seconds and plugging it back in.
No Sound	Check the volume level and ensure the TV is not muted. Verify external audio devices (soundbar, receiver) are properly connected and powered on. Check audio output settings in the TV menu.
Remote Control Not Responding	Replace the batteries in the Magic Remote. Ensure there are no obstructions between the remote and the TV. Re-pair the remote if necessary (refer to the Quick Start Guide).
Network Connectivity Issues (Wi-Fi/Ethernet)	Check your router and modem to ensure they are working correctly. Restart your network equipment. Re-enter Wi-Fi password or check Ethernet cable connection.
Picture Quality Issues (e.g., motion blur, color smearing)	Adjust picture settings (e.g., sharpness, color, motion interpolation). Ensure Filmmaker Mode is off if you prefer motion smoothing. Check the source content quality.

5. TECHNICAL SPECIFICATIONS

Below are the key technical specifications for the LG OLED77C6HUP TV.

Feature	Specification
Model Number	OLED77C6HUP
Screen Size	77 Inches
Display Technology	OLED (Self-Luminous Pixels)
Resolution	4K (3840 x 2160)
Refresh Rate	120 Hz (Native), up to 165 Hz (PC Gaming)
Processor	a11 AI Processor 4K Gen3
HDR Support	Dolby Vision, HDR10, HLG
Response Time	0.1 Milliseconds
Operating System	webOS
Audio Output	2.2 Channel, Dolby Atmos
HDMI Ports	4
USB Ports	2 (USB 2.0), 1 (USB 3.0)
Connectivity	Wi-Fi, Bluetooth 5.3, Ethernet
Screen Mirroring	AirPlay, Google Cast
VESA Mount Standard	300 x 200 mm
Product Dimensions (with stand)	67.4"W x 40.7"H x 10.5"D
Product Dimensions (without stand)	67.4"W x 38.7"H x 1.9"D
Item Weight (with stand)	59.5 Pounds
Item Weight (without stand)	51.8 Pounds

6. WARRANTY INFORMATION

Your LG OLED77C6HUP TV comes with a **1 Year Parts and Labor** limited warranty. Please retain your proof of purchase for warranty claims. For detailed terms and conditions, refer to the warranty card included with your product or visit the official LG website.

7. CUSTOMER SUPPORT

For further assistance, technical support, or service inquiries, please visit the official LG support website or contact their customer service. You can also refer to the comprehensive User Manual (PDF) available for download on the LG support page.

LG Support Website: <https://www.lg.com/us/support>

User Manual (PDF): [Download PDF](#)

