



[Manuals.plus](#) /

› [Garvee](#) /

› [Garvee 20x20 ft Metal Carport Kit Instruction Manual](#)

Garvee 20x20VR

Garvee 20x20 ft Metal Carport Kit Instruction Manual

Model: 20x20VR | Brand: Garvee

[Installation](#) [Operation](#) [Maintenance](#) [Overview](#) [Safety Information](#) [Troubleshooting](#) [Setup & Specifications](#) [Warranty & Support](#)

1. PRODUCT OVERVIEW

The Garvee 20x20 ft Metal Carport Kit provides a robust and high-clearance shelter solution for vehicles such as RVs, tractors, and two standard cars. Its design features a 120° steep-pitch vertical roof for efficient snow shedding and a reinforced frame for structural stability.

This carport offers a massive 109-inch entry clearance and a 173-inch peak height, making it suitable for high-profile equipment. The vertical panel layout and steep roof angle are engineered to prevent snow and rain accumulation.

SNOW SHEDDING

The combination of a vertical panel layout and a steep roof maximizes gravity-assisted snow shedding. This ensures moderate snow slides off preventing the dangerous accumulation and "ice damming" common on lower-pitched roofs, making it a "low-maintenance" choice for regions with seasonal winter weather.

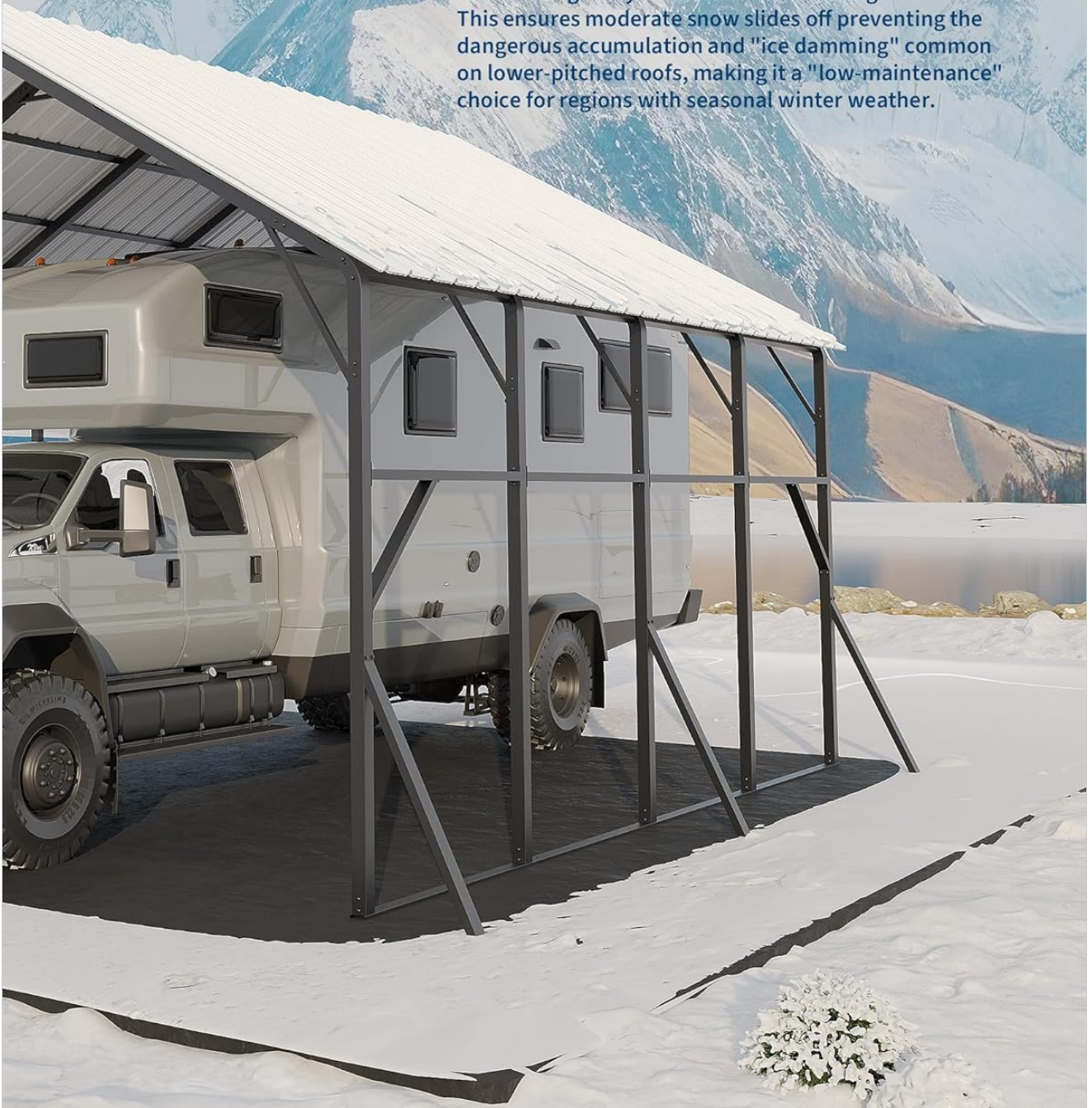


Image 1.1: The Garvee 20x20 ft Metal Carport featuring its high-arch design, providing ample clearance for large vehicles like RVs.

2. SAFETY INFORMATION

To ensure the maximum lifespan and safety of your Garvee metal carport, strictly adhere to the following operational guidelines. Proper installation and maintenance are the responsibility of the owner.

2.1. Snow Management & Load Limits

- While the 120° steep-pitch vertical roof is designed for rapid snow shedding, manual clearing is required once

accumulation reaches 6 inches.

- Allowing snow to exceed this depth creates excessive static load that may compromise structural integrity.
- The manufacturer is not liable for structural damage caused by snow loads exceeding 6 inches.

Double Interlock-drainage system

Sayonara to annoying sealant installation.

This system creates a wall by interlocking two ribs preventing rainwater from seeping laterally. It also forms a step, letting gravity guide the rainwater to drain naturally.



Image 2.1: The carport's steep roof design facilitates snow shedding, but manual clearing is necessary for accumulations over 6 inches.

2.2. Foundation & Anchoring Requirements

- A level and stable foundation is critical for performance.
- **Concrete Surfaces:** Use the included expansion bolts to secure the base rails directly to the concrete.

- **Soil, Grass, or Sand:** Ensure the ground is perfectly level before installation. We strongly recommend using landscape timbers as a perimeter base, pouring pre-cast concrete footings, or utilizing heavy-duty U-stakes (not included) to ensure the structure remains anchored and level.

2.3. Wind Resistance & Ballast Protocol

- The rated 120 MPH wind resistance is a laboratory metric based on specific conditions:
 - Installation on a level concrete base.
 - Secured with 12-inch expansion bolts.
 - Application of additional ballast (sandbags) on the base rails totaling 3x the product's weight.
- In high-wind areas, customers must provide additional downward force (such as sandbags or earth anchors) to prevent wind uplift.
- Failure to meet these installation conditions voids the wind-rating guarantee, and the manufacturer is not responsible for losses caused by high-wind events under improper installation.

2.4. General Safety

- Do not attempt installation during high winds or inclement weather.
- Regularly inspect all bolts and connection points to ensure they remain tight and secure over time.

3. SETUP & INSTALLATION

The Garvee 20x20 ft Metal Carport Kit arrives in 8 cartons, which may arrive separately. It is recommended to have at least 2-3 people for assembly, with 4 or more recommended for larger sections like the roof structure.

3.1. Pre-Installation Checklist

- Verify all 8 cartons have been received.
- Unpack all components and verify against the parts list provided in the detailed user manual (PDF).
- Ensure the installation site is level and prepared according to the foundation requirements in Section 2.2.
- Gather necessary tools: ladders, drills, hammers, and a 10mm socket.

3.2. Assembly Steps

1. **Review User Manual:** Refer to the official [User Manual \(PDF\)](#) for detailed, step-by-step instructions, diagrams, and part identification.
2. **Frame Assembly:** Assemble the columns, rafters, peak beams, and eave purlins. The frame components are 2x2-inch 19 Ga. steel.
3. **Roof Structure:** Construct the roof skeleton, which includes 10 roof purlins for superior weight distribution and structural rigidity.
4. **Roof Panel Installation:** Attach the 27 Ga. metal roof sheets. The double interlock-drainage system prevents rainwater from seeping laterally.
5. **Anchoring:** Secure the carport to the prepared foundation using the appropriate anchoring methods as described in Section 2.2.

Truss Reinforcement

Adds structural stability



10-Purlin System

For superior weight distribution

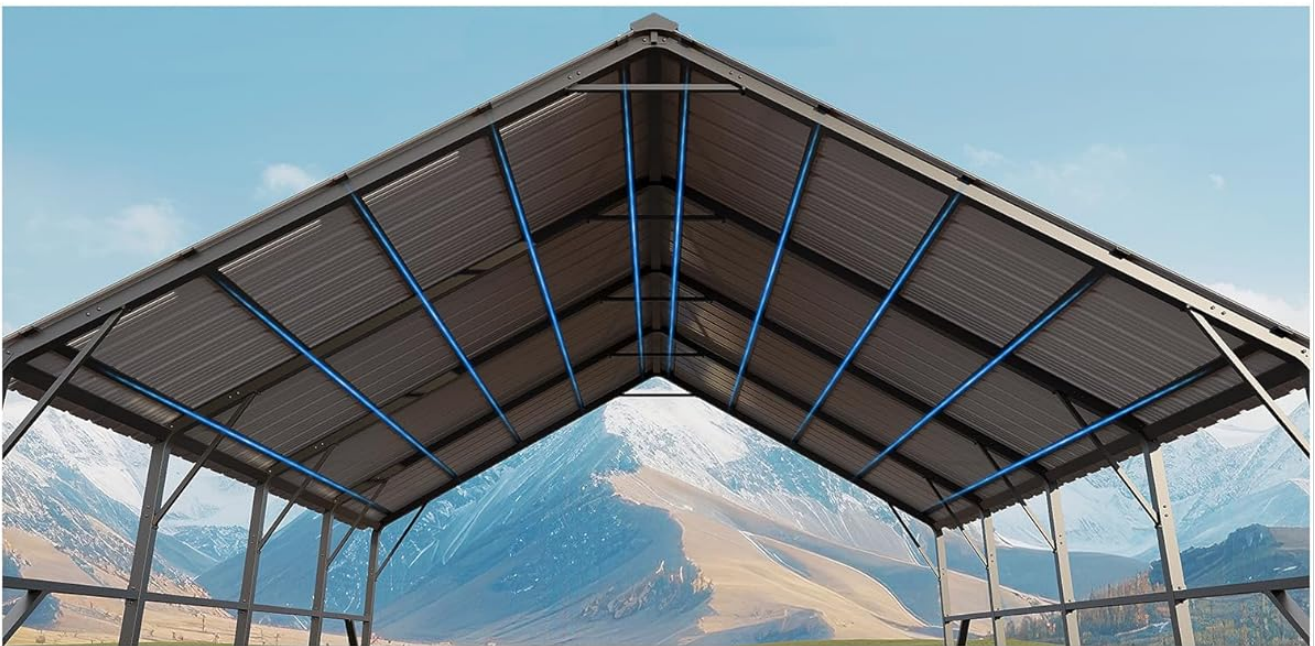


Image 3.1: Illustration of the carport's frame structure, including truss reinforcement for stability.

4. OPERATION

The Garvee 20x20 ft Metal Carport is designed for versatile use, providing shelter for various vehicles and equipment.

4.1. Vehicle and Equipment Storage

- The 20x20 ft footprint (239" W x 234" D) comfortably houses two full-size pickup trucks side-by-side.

- The 173-inch peak height and 109-inch entry clearance accommodate high-profile equipment such as tractors with cabs, Class A RVs, and tall agricultural machinery.

4.2. Weather Protection

- The 120° steep-pitch vertical roof and vertical panel layout are optimized for rapid snow shedding and efficient rain drainage, reducing accumulation.
- The structure provides protection against ultraviolet light and is water repellent.

5. MAINTENANCE

Regular maintenance ensures the longevity and safety of your Garvee metal carport.

5.1. Routine Checks

- **Fastener Inspection:** Regularly inspect all bolts and connection points to ensure they remain tight and secure. Loose fasteners can compromise structural integrity.
- **Foundation Stability:** Periodically check the foundation and anchoring points for any signs of shifting, erosion, or damage. Re-secure anchors if necessary.

5.2. Seasonal Maintenance

- **Snow Removal:** Manually clear snow accumulation from the roof once it reaches 6 inches to prevent excessive static load.
- **Debris Clearing:** Remove any leaves, branches, or other debris that may accumulate on the roof or within the frame to ensure proper drainage and prevent damage.

6. TROUBLESHOOTING

This section addresses common issues that may arise during the assembly or use of your carport.

6.1. Missing or Damaged Parts

- If you receive cartons with missing or damaged parts, immediately contact Garvee customer support.
- It is recommended to take and keep photos of the outer boxes upon delivery, especially if there is visible damage.
- Provide specific details of the missing or damaged components, referencing the parts list from the user manual.

6.2. Assembly Difficulties

- Ensure all holes are properly aligned before tightening bolts. Minor adjustments may be needed.
- Refer to the detailed [User Manual \(PDF\)](#) for visual guides and specific assembly sequences.
- If you encounter persistent issues, contact Garvee customer support for assembly guidance.

6.3. Structural Instability

- Verify that the carport is installed on a level and stable foundation.
- Confirm that all anchoring points are correctly installed and secured according to the instructions in Section 2.2.
- Check all bolts and connections for tightness.
- Ensure adequate ballast is applied in high-wind areas as per Section 2.3.

7. PRODUCT SPECIFICATIONS

Brand	Garvee
Model Number	20x20VR
Product Dimensions (L x W x H)	239"L x 234"W x 173"H
Floor Area	400 Square Feet
Entry Clearance	109 inches
Roof Pitch	120° Steep-Pitch Vertical Roof
Frame Material	Alloy Steel (Galvanized steel, 2x2-inch 19 Ga.)
Roof Material	27 Ga. Metal Sheets
Item Weight	106 Pounds
Water Resistance Level	Water Repellent
UV Protection	Yes
Max Anti-Wind Level	120 MPH (achieved only when anchored to a reinforced concrete base as per instructions)
Required Assembly	Yes
Recommended Snow Management	Manual clearing required at 6"
UPC	840547487298

BIG & TALL

Carport Dimensions

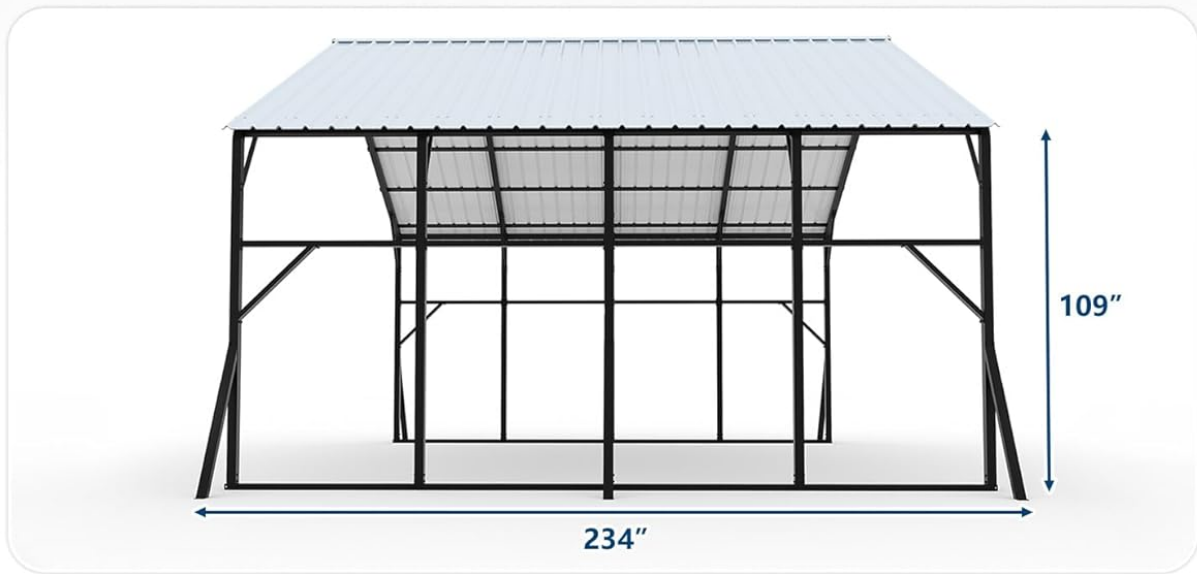
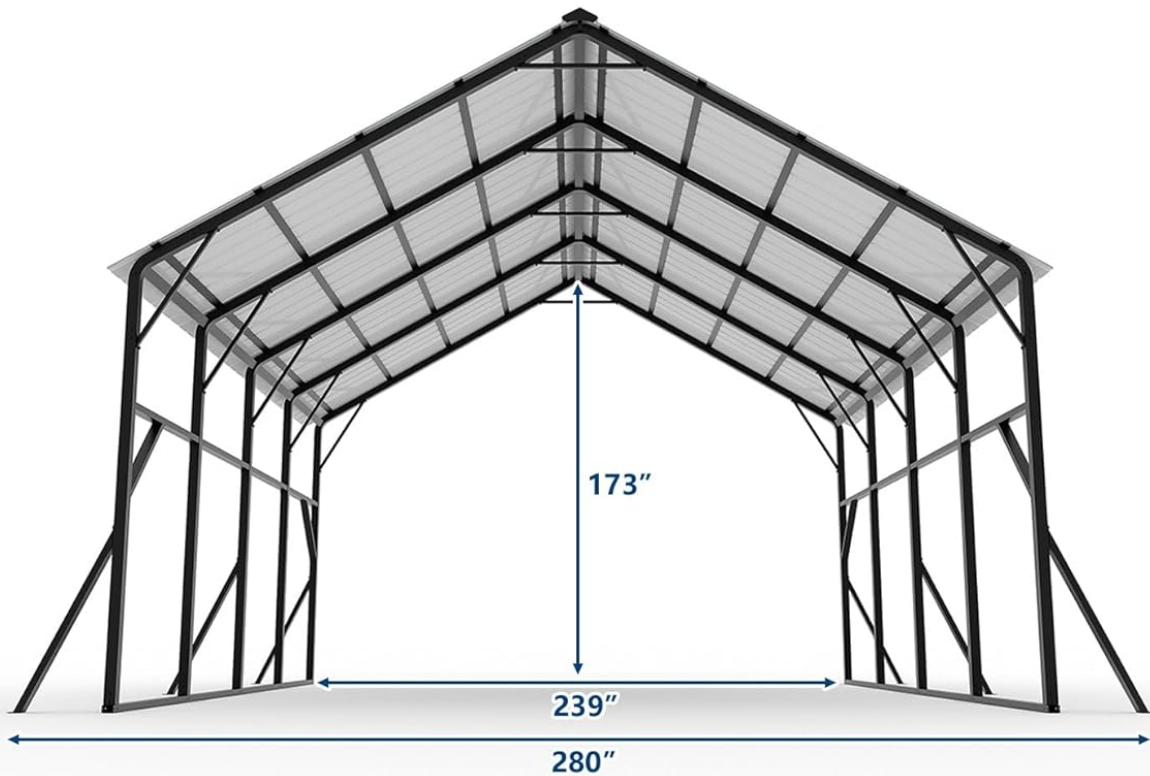


Image 7.1: Detailed dimensions of the Garvee 20x20 ft Metal Carport.

8. WARRANTY & SUPPORT

8.1. Manufacturer Warranty

The Garvee 20x20 ft Metal Carport Kit comes with a **1-year manufacturer warranty**. For full details regarding coverage and terms, please refer to the official [Warranty Document \(PDF\)](#).

8.2. Customer Support

Garvee provides dedicated support for shipping damages, missing parts, and assembly guidance. For the fastest assistance, please take and keep photos of the outer boxes upon delivery and have your model number (20x20VR)

and purchase information ready.

Contact information for support can typically be found on the Garvee official website or through your retailer's customer service portal.