



[Manuals.plus](#) /

› [MELLCOM](#) /

› MELLCOM 10x20 Louvered Pergola Instruction Manual

MELLCOM 10x20

MELLCOM 10x20 Louvered Pergola Instruction Manual

Model: 10x20

1. INTRODUCTION

This manual provides comprehensive instructions for the assembly, operation, and maintenance of your MELLCOM 10x20 Louvered Pergola. Designed for outdoor use, this metal hardtop pergola features an adjustable louvered roof for customizable sun and rain protection, along with an integrated drainage system. Please read all instructions carefully before beginning assembly and retain this manual for future reference.



Image: The MELLCOM 10x20 Louvered Pergola, showcasing its modern design and spacious coverage for an outdoor area.

2. SAFETY INFORMATION

General Safety:

- Ensure all components are securely fastened before use.
- Do not climb on the pergola structure.
- Regularly inspect the pergola for any loose parts or damage.
- In extreme weather conditions (heavy winds, snow), it is recommended to open the louvers to reduce wind resistance and prevent snow accumulation.
- Always use appropriate safety gear during assembly, such as gloves and eye protection.
- Assembly typically requires two to four people. Do not attempt to assemble alone.

3. PACKAGE CONTENTS

Before beginning assembly, carefully unpack all boxes and verify that all parts are present and undamaged. Refer to the

included parts list in your physical manual for a detailed inventory. If any parts are missing or damaged, contact MELLCOM customer support.

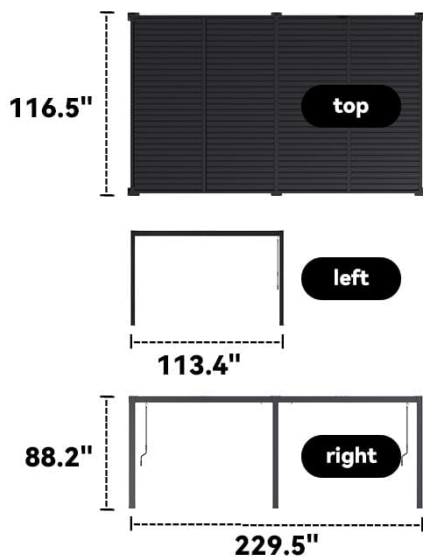
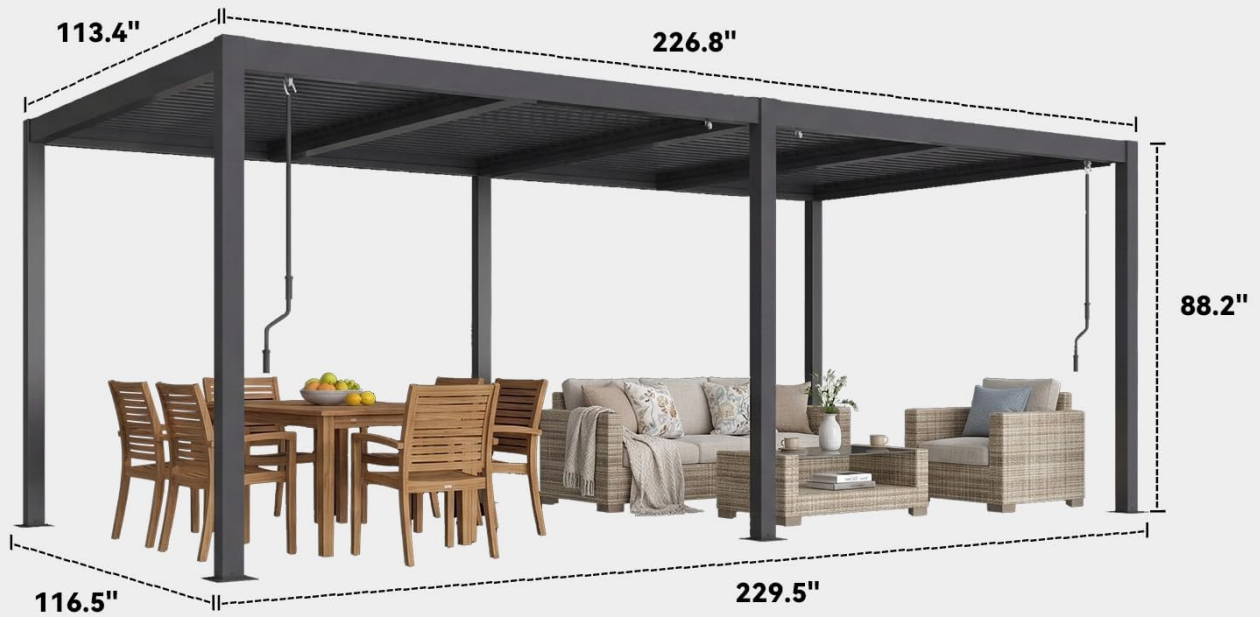


Image: Detailed dimensions of the pergola and a view of the reinforced base stand, highlighting the pre-drilled holes for secure anchoring.

4. SETUP AND ASSEMBLY

The MELLCOM Louvered Pergola is designed for straightforward assembly. Follow the steps below and refer to the official installation video for visual guidance. Tools required typically include a power drill, tape measure, hammer, screwdriver, and a ladder.

4.1. Installation Video Guide

Your browser does not support the video tag.

Video: Official MELLCOM 10x20 Louvered Pergola Installation Video. This video provides a step-by-step visual guide for the complete assembly process, from unpacking to final adjustments.

4.2. Step-by-Step Assembly

1. **Pre-installation Parts Check:** Unpack all boxes and lay out components. Verify all parts against the packing list.
2. **Install the Base Posts:** Attach the base plates to the bottom of each post using the provided screws. Ensure a secure connection.
3. **Assemble the Beams:** Connect the beam sections together, ensuring proper alignment. Secure them with screws as indicated in the instructions.
4. **Connect Posts and Beams:** With assistance, carefully lift and connect the assembled beams to the top of the posts. Secure all corner connections.
5. **Apply Waterproof Tape:** Apply waterproof tape to cross beam grooves, avoiding screw holes, to prevent leaks. Also, apply waterproof tape at beam connector joints.
6. **Install the Louver Drive System:** Assemble the louver drive rods and mechanisms. Secure these components within the pergola frame.
7. **Install Louver Support Brackets:** Attach the support brackets for the louvers to the frame.
8. **Install Adjustable Louvers:** Carefully place and secure the adjustable louver panels into their designated positions.
9. **Install Fixed Louvers:** Install any fixed louver panels as per the design.
10. **Install Anchor Stakes:** Securely anchor the pergola to the ground using the provided expansion bolts through the pre-drilled base plates.
11. **Insert Hooks into Curtain Track:** If using curtains or netting, insert the hooks into the designated track along the perimeter of the pergola. Insert end caps to prevent hooks from sliding out.
12. **Install Curtains and Mosquito Netting:** The mesh and curtain panels come pre-matched. Unzip one side and hang each panel on the track in order.

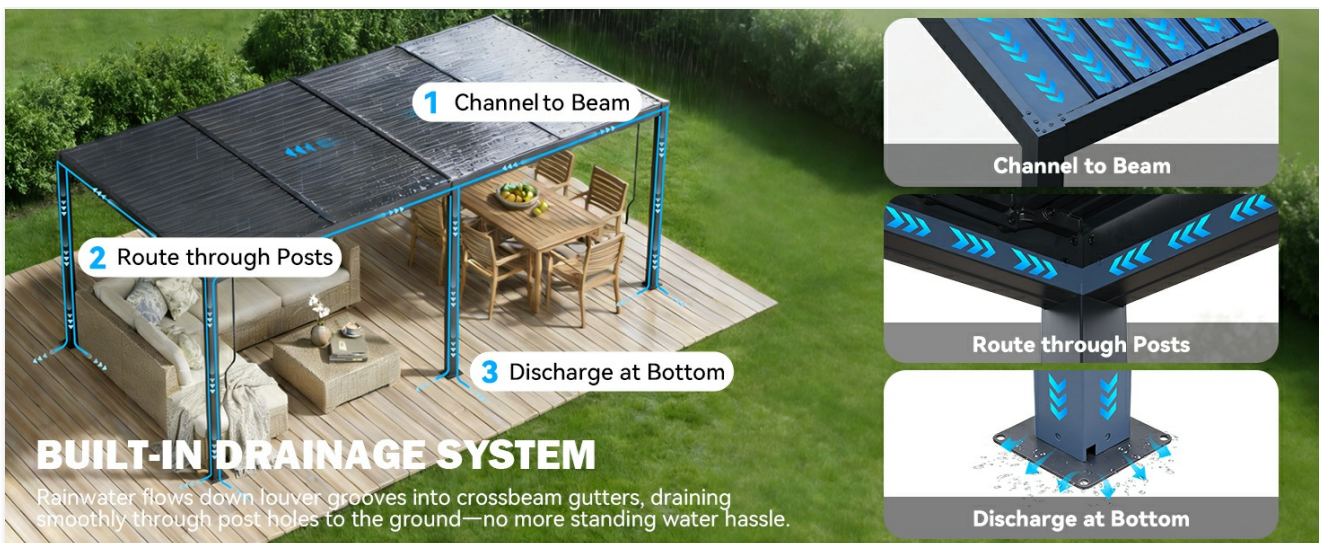


Image: Reinforced base stand with expansion bolts for secure ground anchoring.

5. OPERATING INSTRUCTIONS

5.1. Adjustable Louvered Roof

Your pergola features an adjustable louvered roof system. Use the provided crank handle to independently adjust the four louvered roof sections from 0 to 90 degrees. This allows you to control the amount of sunlight and airflow, or close them completely for rain and snow protection.

ADJUSTABLE LOUVERED ROOF

Turn the handle to independently adjust **4** louvered roofs from **0-90°**, effortlessly balancing shade and openness in each space.



OPEN:Sunbathe



CLOSE:Rainproof



CLOSE:Snow-proof

Image: Illustration of the adjustable louvers in various positions: open for sunbathing, closed for rain protection, and closed for snow protection, operated by a crank handle.

CONCEALED HARDWARE SHIELD UPGRADE

Our fully concealed winding mechanisms and hardware deliver superior corrosion resistance, allowing you to enjoy outdoor use with confidence throughout the year.

OURS		VS	OTHERS	
⌚ Longer Lifespan	✓			✗
👍 Sleeker Looks	✓			✗
🛡️ Prevent Rust	✓			✗

A close-up photograph of the concealed hardware shield upgrade on the roof structure. It shows a metal bracket with a ring and bolts, designed to protect the winding mechanism from corrosion.

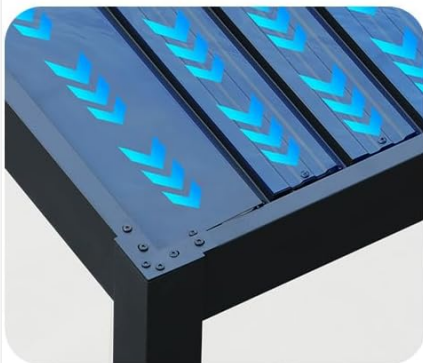
Image: A removable handle used to manually adjust the roof louver angles.

5.2. Integrated Drainage System

The pergola features a built-in drainage system. When the louvers are closed, rainwater flows into hidden gutter channels, then down through the interior of the posts, and finally discharges at the base. This design prevents water pooling and keeps the area underneath dry.

BUILT-IN DRAINAGE SYSTEM

No need to stress over weather changes—close the louvered roof for an instant weather-resistant outdoor haven.



Channel to Beams



Route through Posts



Discharge at Base

Image: Visual representation of the built-in drainage system, detailing the path of rainwater from the louvers to the ground.

Image: A detailed diagram showing the three stages of the built-in drainage system: channel to beam, route through posts, and discharge at the bottom.

6. MAINTENANCE

To ensure the longevity and optimal performance of your MELLCOM Louvered Pergola, regular maintenance is recommended:

- **Cleaning:** Clean the frame and louvers periodically with mild soap and water. Avoid abrasive cleaners or harsh chemicals that could damage the finish.
- **Drainage System:** Ensure the drainage channels and post interiors are free from debris (leaves, dirt) to prevent blockages and ensure proper water flow.
- **Hardware Inspection:** Periodically check all screws and bolts to ensure they remain tight. Re-tighten if necessary.

- **Louver Mechanism:** Keep the louver adjustment mechanism clean and free of obstructions. Lubricate moving parts if they become stiff.
- **Winterization:** In areas with heavy snowfall, it is advisable to keep the louvers open to prevent excessive snow accumulation on the roof, which could cause structural stress.

SLEEK CONCEALED HARDWARE PROTECTION

To extend lifespan and reduce component wear, we've fully built-in winding mechanisms and screws to block sun and rain.



**Long-Lasting
Durability**



**Streamlined
Sleek Design**



**Rust & Corrosion
Resistant**



**Exposed
Screws**



**Ordinary
Iron**

Image: The pergola features sleek, concealed hardware for enhanced durability and corrosion resistance, reducing maintenance needs compared to exposed hardware.

7. TROUBLESHOOTING

If you encounter any issues with your pergola, refer to the following common troubleshooting tips:

- **Water Leakage:** Check all beam connections and ensure waterproof tape was applied correctly during assembly. Inspect drainage channels for blockages.
- **Stiff Louver Operation:** Ensure the louver drive system is clean and free of debris. Lubricate moving parts if necessary. Check for any bent or obstructed louvers.
- **Pergola Instability:** Verify that all posts are securely anchored to the ground using the expansion bolts. Ensure all frame connections are tight.
- **Missing or Damaged Parts:** If you discover any missing or damaged parts during or after assembly, contact MELLCOM customer support for assistance.

8. SPECIFICATIONS

Feature	Detail
Brand	MELLCOM
Model	10x20 Louvered Pergola
Material	Metal
Style	Modern
Product Dimensions (L x W x H)	229.5"L x 116.5"W x 88.2"H
Item Weight	567.5 Pounds
Frame Material	Metal
Water Resistance Level	Waterproof
Shape	Rectangular
Ultraviolet Light Protection	100%
Assembly Required	Yes

9. WARRANTY AND SUPPORT

Return Policy: This product is eligible for a refund or replacement within 30 days of purchase. Please refer to the retailer's specific return policy for detailed terms and conditions.

For further assistance, technical support, or to inquire about replacement parts, please contact MELLCOM customer service through the retailer's platform or the official MELLCOM website.